

Planning and Development

# Raleigh's Black Heritage and Historic Places: 1945-1975

*The history and heritage behind  
Raleigh's black architects,  
builders, and buildings.*



Raleigh





# Raleigh's Black Heritage and Historic Places: 1945-1975

## Welcoming Remarks

Patrick Young, Director  
Planning and Development





# Raleigh's Black Heritage and Historic Places: 1945-1975

## Housekeeping and Agenda Overview

Tania Tully, Senior Preservation Planner

### Agenda

- We Heard You
- Project Update
- Next Steps

**Raleigh's Black Heritage and Historic Places: 1945-1975 Project**

AGENDA AND INFORMATION SESSION

- Welcome (Pat Young, Planning and Development Director)
- Housekeeping and Agenda Overview (Tania Tully, Senior Historic Preservation Planner)
- We Heard You
  - Meeting location
  - FAQ handout
  - Oral histories: This project
  - Oral histories: Future projects (Tiesha Hixon, Community Engagement Manager)
- Project Update (Mary Rutlin Hanbury, Project Consultant)
  - Review project scope and approach
  - Topic updates
  - Request for more data and interview prospects
- Next steps
- Helpful Project FYIs
  - Questions from the Community

**How to Reach the Team:**  
Email [historicpreservation@raleighnc.gov](mailto:historicpreservation@raleighnc.gov) or call 919-832-7298

[raleighnc.gov](http://raleighnc.gov)  
Search Term: Black History





# We Heard You

## Meeting Location



Moved to the Chavis Park  
Community Center to address  
technology and HVAC concerns



# We Heard You

## FAQ Handout



Answers to questions heard at the May 2022 kick-off and later are included



# We Heard You

## Oral Histories: This Project



- Two (2) people verbally confirmed
- Contacted eleven (11) total people. None yet scheduled.
- More volunteers sought.



# We Heard You

## Oral Histories: This Project



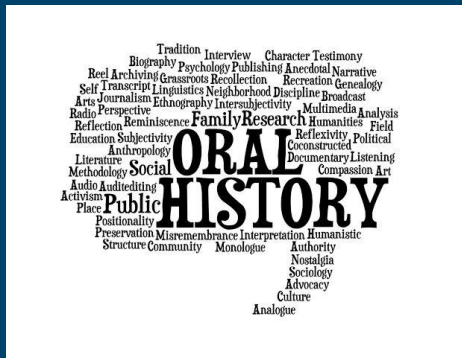
- Grant contract ends in December
- An independent oral historian will be hired if we are unable to get 10 scheduled and transcribed by November



Raleigh

# We Heard You

## Oral Histories: Future Project



Tiesha Hinton

Community Engagement Manger

City of Raleigh

Office of Community Engagement





# Raleigh's Black Heritage and Historic Places: 1945-1975

## Project Update

Hanbury Preservation Consulting

Mary Ruffin Hanbury

Take the  
online survey  
now until  
9/20



# Project Update

Mary Ruffin Hanbury



**Raleigh's Black Heritage  
and Historic Places: 1945-1975**

**Tuesday, September 13 | 6-8 p.m.**  
Chavis Community Center

# Raleigh's Black Heritage and Historic Places Study

---

## Project Scope

An architectural survey update of *historic buildings, sites, and neighborhoods important to African American history and heritage.*

# Raleigh's Black Heritage and Historic Places Study

---

## Project Scope

**This project will identify and document properties that have **not** been surveyed previously.**

# Raleigh's Black Heritage and Historic Places Study

---

## Project Scope



Special emphasis will be placed on documenting **churches** and **entertainment venues** constructed **between 1945 and 1975**, properties associated with the **Civil Rights Movement**, and properties designed/constructed by **African American architects and building professionals**.

# Raleigh's Black Heritage and Historic Places Study

---

## Project Scope



The **Biltmore Hills** neighborhood also will be documented during this project.

# Raleigh's Black Heritage and Historic Places Study

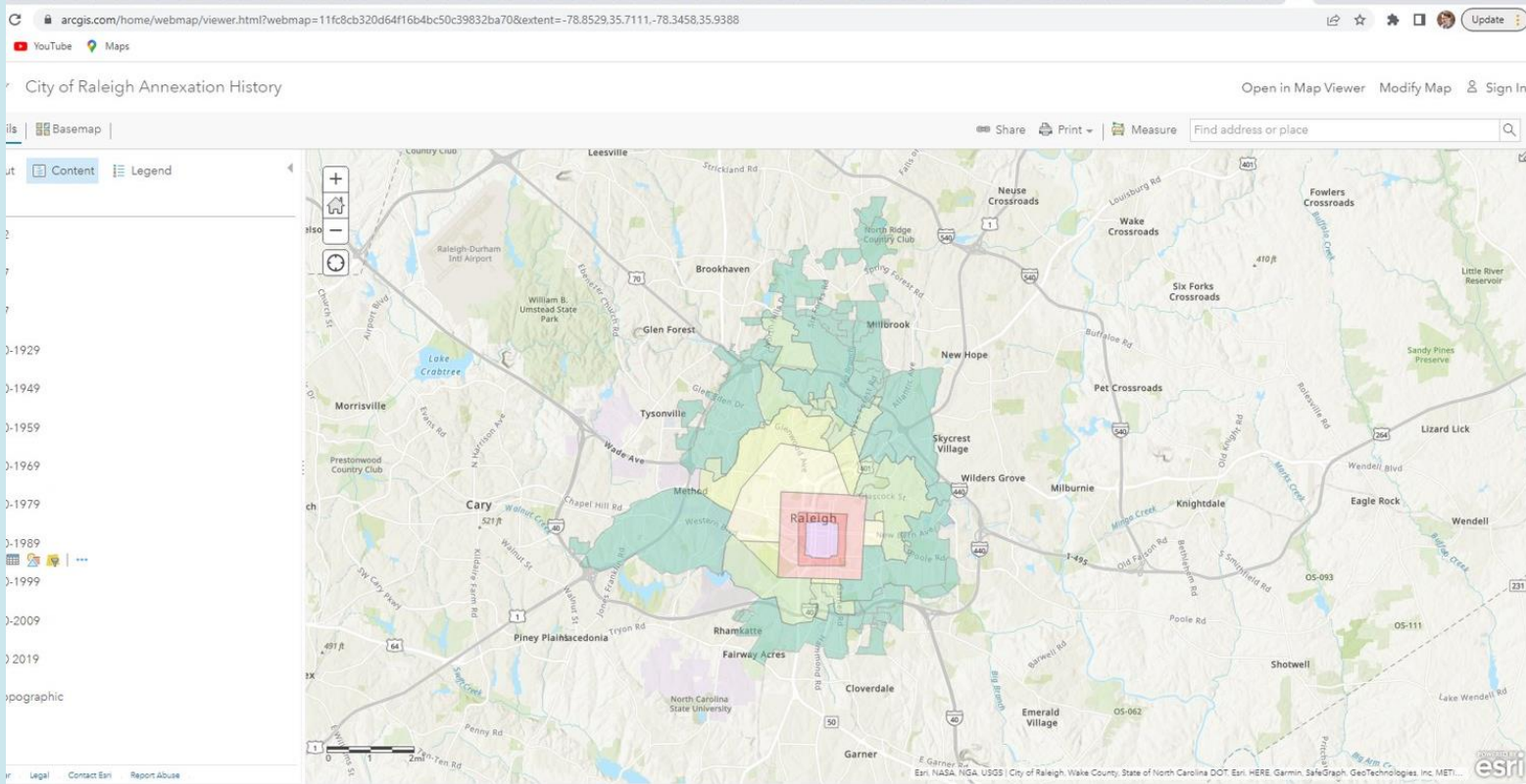
---

## Study Area

Raleigh's **1975 municipal limits** define the Study Area, which comprises roughly **33,000 acres**.

# Raleigh's Black Heritage and Historic Places Study

## Study Area





# **Raleigh's Black Heritage and Historic Places Study**

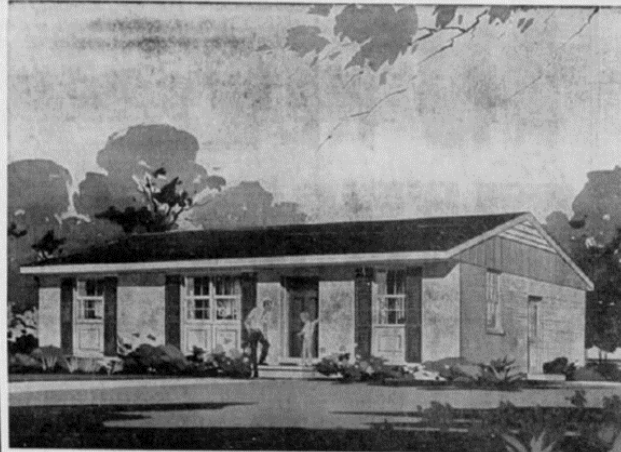
---

## **Survey Documentation**

- **What exists?**
- **Where is it? (mapping)**
- **What does it look like? (photos)**
- **What are the basic facts? (address, age, type of construction, type of resource)**

# Raleigh's Black Heritage and Historic Places Study

## Survey Documentation



### MODEL HOME NOW OPEN FOR INSPECTION

AT LAST! Here is a modern subdivision for colored families in Raleigh. The new Biltmore Hills is a carefully planned community of attractive 3-bedroom homes on beautifully landscaped lots. ALL CITY CONVENIENCES because Biltmore Hills is INSIDE THE CITY LIMITS!

Come out today and see how easy it is to own a home of your own in the new Biltmore Hills — Raleigh's newest exclusive colored subdivision.

#### GENEROUS FINANCING

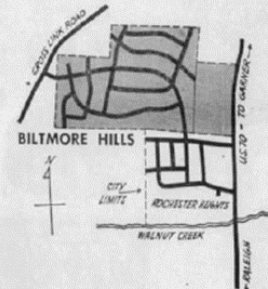
If you can qualify for an "FHA 221" 40-year loan, NO DOWN PAYMENT is required! Closing costs are just \$250.00. Monthly payments are LESS THAN \$60.00!

### FREE BUS SERVICE

Today a special **FREE** bus will run from the Post Office Cor., Fayetteville & Martin St. to Biltmore Hills. You can board this bus at any of the regular stops on the BRAGG ST. ROUTE.

**BUS SCHEDULE:** Leave downtown: Noon, 12:40, 1:20, 2:00, 2:40, 3:20, 4:00, 4:40, 5:20, 6:00.  
Leave Biltmore Hills: 12:20, 1:00, 1:40, 2:20, 3:00, 3:40, 4:20, 5:00, 5:40, 6:20.

**DRIVING?** Biltmore Hills is just minutes from downtown. Just turn left off Old Garner Road at the big Biltmore Hills sign.



## MANY FREE GIFTS AND PRIZES

### REGISTER FOR BIG PRIZES

#### GRAND PRIZE — A NEW PORTABLE TELEVISION SET

Prizes for runner-up winners include many of the most wanted small

**SPECIAL BONUS PRIZE** — If the family winning the Grand Prize has a deposit on a Biltmore Hills home (prior to 5:30 P. M. November 8, 1939) they will also receive **A FREE DELUXE "CALORIC" GAS RANGE, FREE**

**GIFTS GALORE** — everyone visiting the Biltmore Hills Model Home today will receive **FREE Balloons • FREE Buttons • FREE Pepsi-Cola • FREE Kiddy Rides.**

**FREE GIFTS GALORE** — everyone visiting the Biltmore Hills Model Home today will receive **FREE GIFTS!**

- ★ FREE BALLOONS
- ★ FREE BUTTONS
- ★ FREE PEPSI COLA
- ★ FREE KIDDIE RIDES



**Biltmore Hills**

Built by the South's leading Residential developer  
SALES REPRESENTATIVE: John W. Withers & Co., 507 E. Martin St.,  
Phone TE 3-5251

# Raleigh's Black Heritage and Historic Places Study

## Homes





# Raleigh's Black Heritage and Historic Places Study

## Homes



# Raleigh's Black Heritage and Historic Places Study

## Homes





# Raleigh's Black Heritage and Historic Places Study

## Churches



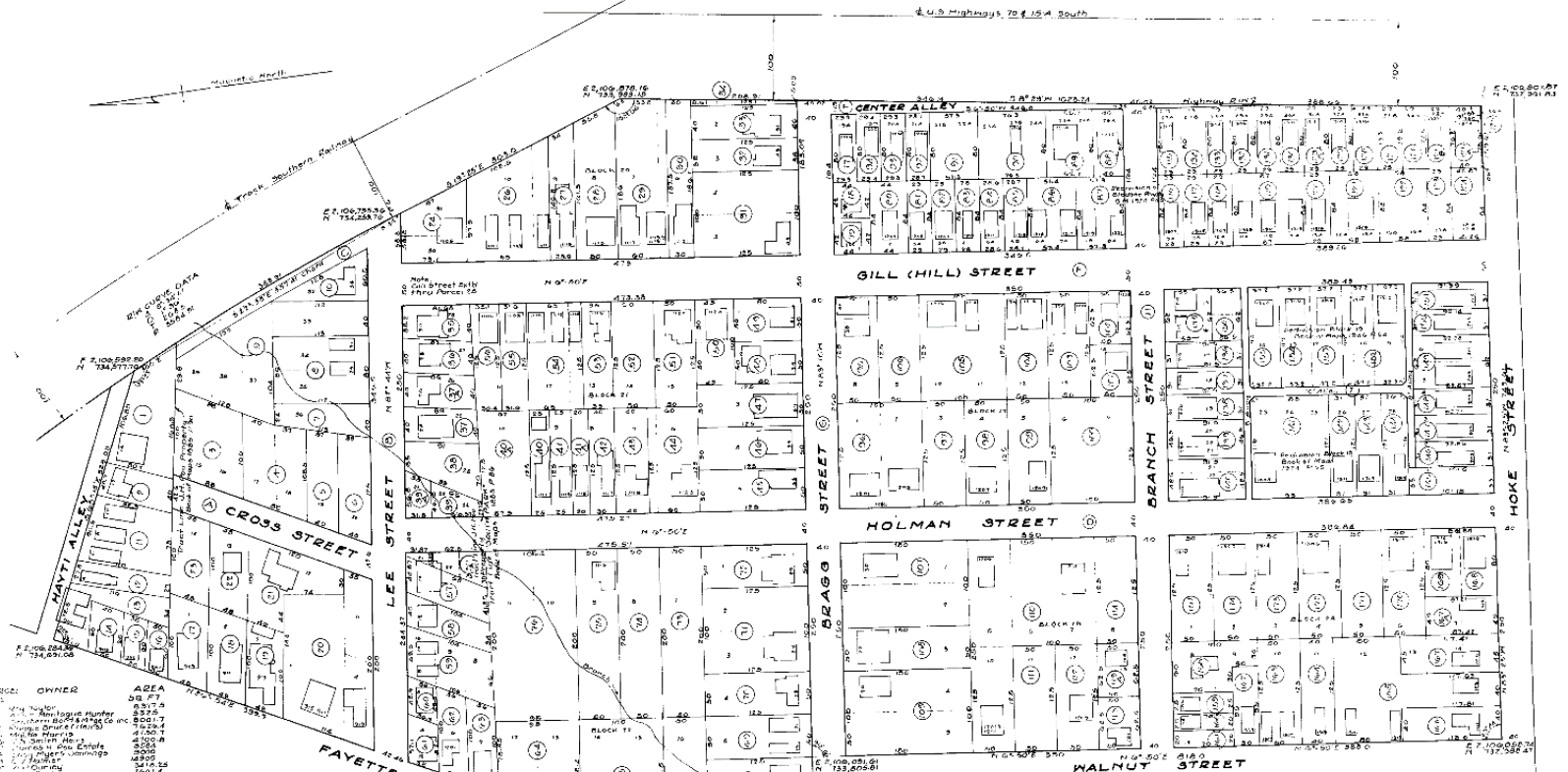
Churches  
**BAPTIST**  
Baptist Mission 302 W Johnson  
Calvary 700 Fayetteville  
Caraleigh 212 Green  
Dawson Street (c) 311 W Lenoir  
Fayetteville Street (c) 751 Fayetteville  
First N Salisbury sw Edenton  
First (c) 101 S Wilmington  
Free Will (c) 322 S East  
Hayes-Barton 1800 Glenwood av  
Ironside Primitive 1101 New Bern av  
Lily of the Valley Free Will (c) 1109 S Bloodworth  
Martin Street 1001 E Martin  
Morning Star (c) 628 S Tarboro  
Mt Zion (c) 1116 S Blount  
North Street 618 W North  
Oberlin (c) 804 Oberlin rd  
Pilot 1106 N Blount  
Pullen Memorial 1801 Hillsboro  
Tabernacle 221 E Hargett  
Tupper Memorial (c) 501 S Blount  
Union (c) 600 Saunders

**CATHOLIC**  
**SACRED HEART CATHEDRAL**, Hillsboro nw cor McDowell, Dial 6030  
(For further information see page 27 Buyers' Guide)  
StMonica 11 N Tarboro

**CHRISTIAN**  
Hillyer Memorial 720 Hillsboro  
Manly Street (c) 814 Manly  
Maple Temple (c) 725 E Martin  
Raleigh Christian Alliance 503 E Lane

**CONGREGATIONAL**  
First (c) W South sw cor Manly  
United The 228 Hillsboro

**EPISCOPAL**  
Christ N Wilmington se cor Edenton  
Church of the Good Shepherd Hillsboro cor McDowell  
Episcopal Diocese of North Carolina 600 W...



PARCEL NO.	OWNER	AREA SQ. FT.
1	Wm. H. Taylor	8527.9
2	Wm. H. Taylor	8527.9
3	Wm. H. Taylor	8527.9
4	Wm. H. Taylor	8527.9
5	Wm. H. Taylor	8527.9
6	Wm. H. Taylor	8527.9
7	Wm. H. Taylor	8527.9
8	Wm. H. Taylor	8527.9
9	Wm. H. Taylor	8527.9
10	Wm. H. Taylor	8527.9
11	Wm. H. Taylor	8527.9
12	Wm. H. Taylor	8527.9
13	Wm. H. Taylor	8527.9
14	Wm. H. Taylor	8527.9
15	Wm. H. Taylor	8527.9
16	Wm. H. Taylor	8527.9
17	Wm. H. Taylor	8527.9
18	Wm. H. Taylor	8527.9
19	Wm. H. Taylor	8527.9
20	Wm. H. Taylor	8527.9
21	Wm. H. Taylor	8527.9
22	Wm. H. Taylor	8527.9
23	Wm. H. Taylor	8527.9
24	Wm. H. Taylor	8527.9
25	Wm. H. Taylor	8527.9
26	Wm. H. Taylor	8527.9
27	Wm. H. Taylor	8527.9
28	Wm. H. Taylor	8527.9
29	Wm. H. Taylor	8527.9
30	Wm. H. Taylor	8527.9
31	Wm. H. Taylor	8527.9
32	Wm. H. Taylor	8527.9
33	Wm. H. Taylor	8527.9
34	Wm. H. Taylor	8527.9
35	Wm. H. Taylor	8527.9
36	Wm. H. Taylor	8527.9
37	Wm. H. Taylor	8527.9
38	Wm. H. Taylor	8527.9
39	Wm. H. Taylor	8527.9
40	Wm. H. Taylor	8527.9
41	Wm. H. Taylor	8527.9
42	Wm. H. Taylor	8527.9
43	Wm. H. Taylor	8527.9
44	Wm. H. Taylor	8527.9
45	Wm. H. Taylor	8527.9
46	Wm. H. Taylor	8527.9
47	Wm. H. Taylor	8527.9
48	Wm. H. Taylor	8527.9
49	Wm. H. Taylor	8527.9
50	Wm. H. Taylor	8527.9
51	Wm. H. Taylor	8527.9
52	Wm. H. Taylor	8527.9
53	Wm. H. Taylor	8527.9
54	Wm. H. Taylor	8527.9
55	Wm. H. Taylor	8527.9
56	Wm. H. Taylor	8527.9
57	Wm. H. Taylor	8527.9
58	Wm. H. Taylor	8527.9
59	Wm. H. Taylor	8527.9
60	Wm. H. Taylor	8527.9
61	Wm. H. Taylor	8527.9
62	Wm. H. Taylor	8527.9
63	Wm. H. Taylor	8527.9
64	Wm. H. Taylor	8527.9
65	Wm. H. Taylor	8527.9
66	Wm. H. Taylor	8527.9
67	Wm. H. Taylor	8527.9
68	Wm. H. Taylor	8527.9
69	Wm. H. Taylor	8527.9
70	Wm. H. Taylor	8527.9
71	Wm. H. Taylor	8527.9
72	Wm. H. Taylor	8527.9
73	Wm. H. Taylor	8527.9
74	Wm. H. Taylor	8527.9
75	Wm. H. Taylor	8527.9
76	Wm. H. Taylor	8527.9
77	Wm. H. Taylor	8527.9
78	Wm. H. Taylor	8527.9
79	Wm. H. Taylor	8527.9
80	Wm. H. Taylor	8527.9
81	Wm. H. Taylor	8527.9
82	Wm. H. Taylor	8527.9
83	Wm. H. Taylor	8527.9
84	Wm. H. Taylor	8527.9
85	Wm. H. Taylor	8527.9
86	Wm. H. Taylor	8527.9
87	Wm. H. Taylor	8527.9
88	Wm. H. Taylor	8527.9
89	Wm. H. Taylor	8527.9
90	Wm. H. Taylor	8527.9
91	Wm. H. Taylor	8527.9
92	Wm. H. Taylor	8527.9
93	Wm. H. Taylor	8527.9
94	Wm. H. Taylor	8527.9
95	Wm. H. Taylor	8527.9
96	Wm. H. Taylor	8527.9
97	Wm. H. Taylor	8527.9
98	Wm. H. Taylor	8527.9
99	Wm. H. Taylor	8527.9
100	Wm. H. Taylor	8527.9

47	Wm. H. Taylor	8527.9
48	Wm. H. Taylor	8527.9
49	Wm. H. Taylor	8527.9
50	Wm. H. Taylor	8527.9
51	Wm. H. Taylor	8527.9
52	Wm. H. Taylor	8527.9
53	Wm. H. Taylor	8527.9
54	Wm. H. Taylor	8527.9
55	Wm. H. Taylor	8527.9
56	Wm. H. Taylor	8527.9
57	Wm. H. Taylor	8527.9
58	Wm. H. Taylor	8527.9
59	Wm. H. Taylor	8527.9
60	Wm. H. Taylor	8527.9
61	Wm. H. Taylor	8527.9
62	Wm. H. Taylor	8527.9
63	Wm. H. Taylor	8527.9
64	Wm. H. Taylor	8527.9
65	Wm. H. Taylor	8527.9
66	Wm. H. Taylor	8527.9
67	Wm. H. Taylor	8527.9
68	Wm. H. Taylor	8527.9
69	Wm. H. Taylor	8527.9
70	Wm. H. Taylor	8527.9
71	Wm. H. Taylor	8527.9
72	Wm. H. Taylor	8527.9
73	Wm. H. Taylor	8527.9
74	Wm. H. Taylor	8527.9
75	Wm. H. Taylor	8527.9
76	Wm. H. Taylor	8527.9
77	Wm. H. Taylor	8527.9
78	Wm. H. Taylor	8527.9
79	Wm. H. Taylor	8527.9
80	Wm. H. Taylor	8527.9
81	Wm. H. Taylor	8527.9
82	Wm. H. Taylor	8527.9
83	Wm. H. Taylor	8527.9
84	Wm. H. Taylor	8527.9
85	Wm. H. Taylor	8527.9
86	Wm. H. Taylor	8527.9
87	Wm. H. Taylor	8527.9
88	Wm. H. Taylor	8527.9
89	Wm. H. Taylor	8527.9
90	Wm. H. Taylor	8527.9
91	Wm. H. Taylor	8527.9
92	Wm. H. Taylor	8527.9
93	Wm. H. Taylor	8527.9
94	Wm. H. Taylor	8527.9
95	Wm. H. Taylor	8527.9
96	Wm. H. Taylor	8527.9
97	Wm. H. Taylor	8527.9
98	Wm. H. Taylor	8527.9
99	Wm. H. Taylor	8527.9
100	Wm. H. Taylor	8527.9

101	Wm. H. Taylor	8527.9
102	Wm. H. Taylor	8527.9
103	Wm. H. Taylor	8527.9
104	Wm. H. Taylor	8527.9
105	Wm. H. Taylor	8527.9
106	Wm. H. Taylor	8527.9
107	Wm. H. Taylor	8527.9
108	Wm. H. Taylor	8527.9
109	Wm. H. Taylor	8527.9
110	Wm. H. Taylor	8527.9
111	Wm. H. Taylor	8527.9
112	Wm. H. Taylor	8527.9
113	Wm. H. Taylor	8527.9
114	Wm. H. Taylor	8527.9
115	Wm. H. Taylor	8527.9
116	Wm. H. Taylor	8527.9
117	Wm. H. Taylor	8527.9
118	Wm. H. Taylor	8527.9
119	Wm. H. Taylor	8527.9
120	Wm. H. Taylor	8527.9
121	Wm. H. Taylor	8527.9
122	Wm. H. Taylor	8527.9
123	Wm. H. Taylor	8527.9
124	Wm. H. Taylor	8527.9
125	Wm. H. Taylor	8527.9
126	Wm. H. Taylor	8527.9
127	Wm. H. Taylor	8527.9
128	Wm. H. Taylor	8527.9
129	Wm. H. Taylor	8527.9
130	Wm. H. Taylor	8527.9
131	Wm. H. Taylor	8527.9
132	Wm. H. Taylor	8527.9
133	Wm. H. Taylor	8527.9
134	Wm. H. Taylor	8527.9
135	Wm. H. Taylor	8527.9
136	Wm. H. Taylor	8527.9
137	Wm. H. Taylor	8527.9
138	Wm. H. Taylor	8527.9
139	Wm. H. Taylor	8527.9
140	Wm. H. Taylor	8527.9
141	Wm. H. Taylor	8527.9
142	Wm. H. Taylor	8527.9
143	Wm. H. Taylor	8527.9
144	Wm. H. Taylor	8527.9
145	Wm. H. Taylor	8527.9
146	Wm. H. Taylor	8527.9
147	Wm. H. Taylor	8527.9
148	Wm. H. Taylor	8527.9
149	Wm. H. Taylor	8527.9
150	Wm. H. Taylor	8527.9

151	Wm. H. Taylor	8527.9
152	Wm. H. Taylor	8527.9
153	Wm. H. Taylor	8527.9
154	Wm. H. Taylor	8527.9
155	Wm. H. Taylor	8527.9
156	Wm. H. Taylor	8527.9
157	Wm. H. Taylor	8527.9
158	Wm. H. Taylor	8527.9
159	Wm. H. Taylor	8527.9
160	Wm. H. Taylor	8527.9
161	Wm. H. Taylor	8527.9
162	Wm. H. Taylor	8527.9
163	Wm. H. Taylor	8527.9
164	Wm. H. Taylor	8527.9
165	Wm. H. Taylor	8527.9
166	Wm. H. Taylor	8527.9
167	Wm. H. Taylor	8527.9
168	Wm. H. Taylor	8527.9
169	Wm. H. Taylor	8527.9
170	Wm. H. Taylor	8527.9
171	Wm. H. Taylor	8527.9
172	Wm. H. Taylor	8527.9
173	Wm. H. Taylor	8527.9
174	Wm. H. Taylor	8527.9
175	Wm. H. Taylor	8527.9
176	Wm. H. Taylor	8527.9
177	Wm. H. Taylor	8527.9
178	Wm. H. Taylor	8527.9
179	Wm. H. Taylor	8527.9
180	Wm. H. Taylor	8527.9
181	Wm. H. Taylor	8527.9
182	Wm. H. Taylor	8527.9
183	Wm. H. Taylor	8527.9
184	Wm. H. Taylor	8527.9
185	Wm. H. Taylor	8527.9
186	Wm. H. Taylor	8527.9
187	Wm. H. Taylor	8527.9
188	Wm. H. Taylor	8527.9
189	Wm. H. Taylor	8527.9
190	Wm. H. Taylor	8527.9
191	Wm. H. Taylor	8527.9
192	Wm. H. Taylor	8527.9
193	Wm. H. Taylor	8527.9
194	Wm. H. Taylor	8527.9
195	Wm. H. Taylor	8527.9
196	Wm. H. Taylor	8527.9
197	Wm. H. Taylor	8527.9
198	Wm. H. Taylor	8527.9
199	Wm. H. Taylor	8527.9
200	Wm. H. Taylor	8527.9

I hereby certify that this map was prepared in accordance with the laws of the State of North Carolina and is a correct copy.  
 Fred W. Habel, Registered Professional Engineer  
 Registered Professional Engineer

PROPERTY MAP  
 WALNUT TERRACE  
 HOUSING AUTHORITY OF  
 THE CITY OF RALEIGH  
 RALEIGH, WAKE COUNTY, N.C.  
 FRED W. HABEL, REG. ENGR.  
 SCALE 1"=50'  
 DEC. 1956 PROJECT NO. NC. 25  
 PLANS NO. X-1

# Raleigh's Black Heritage and Historic Places Study

---

## Entertainment Venues

- **Community Centers -  
Worthdale, Method, Chavis**
- **Safety Club**





# Raleigh's Black Heritage and Historic Places Study

## Civil Rights – Sit-in Sites





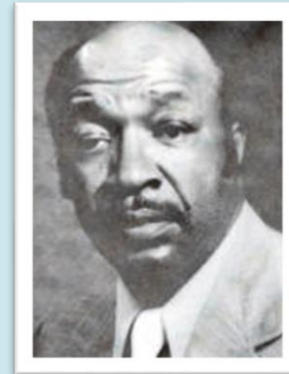


# Raleigh's Black Heritage and Historic Places Study

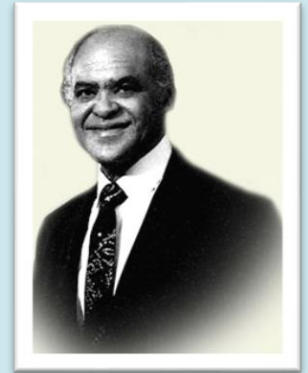
## Architects & Builders

**Between 1945-1975 -- (excludes Clarence Lightner, Henry Beard Delany, Gaston Alonzo Edwards, J. W. Holmes)**

- **Willie Edward Jenkins**
- **Millard R. Peebles masonry contractor**
- **John W. Winters**



Willie Edward Jenkins, Architect



John W. Winters, Architect



**Architects  
&  
Builders:  
  
John W.  
Winters & Co.**

**OPEN HOUSE!**



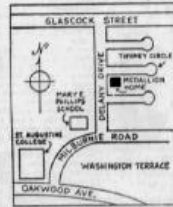
featuring Flameless Electric Heat



**Visit Madonna Acres' TOTAL ELECTRIC  
MEDALLION HOME**

*Raleigh's Newest Subdivision - Homes Designed and Built  
By John W. Winters & Co.*

open to the public:  
**TODAY, SEPT. 10th. through  
Sunday, Sept. 17th**  
**HOURS: Weekdays 5 to 8 p.m.  
Sat. & Sunday 1 to 8 p.m.**



**CAROLINA POWER & LIGHT COMPANY**  
*An investor-owned, taxpayer, public utility company*

**Look For These Medallion Features**



**Flameless Electric Heat—**  
Safe, flameless, electric ceiling heat provides individual temperature control in each room. You heat by wire instead of fire — automatically.



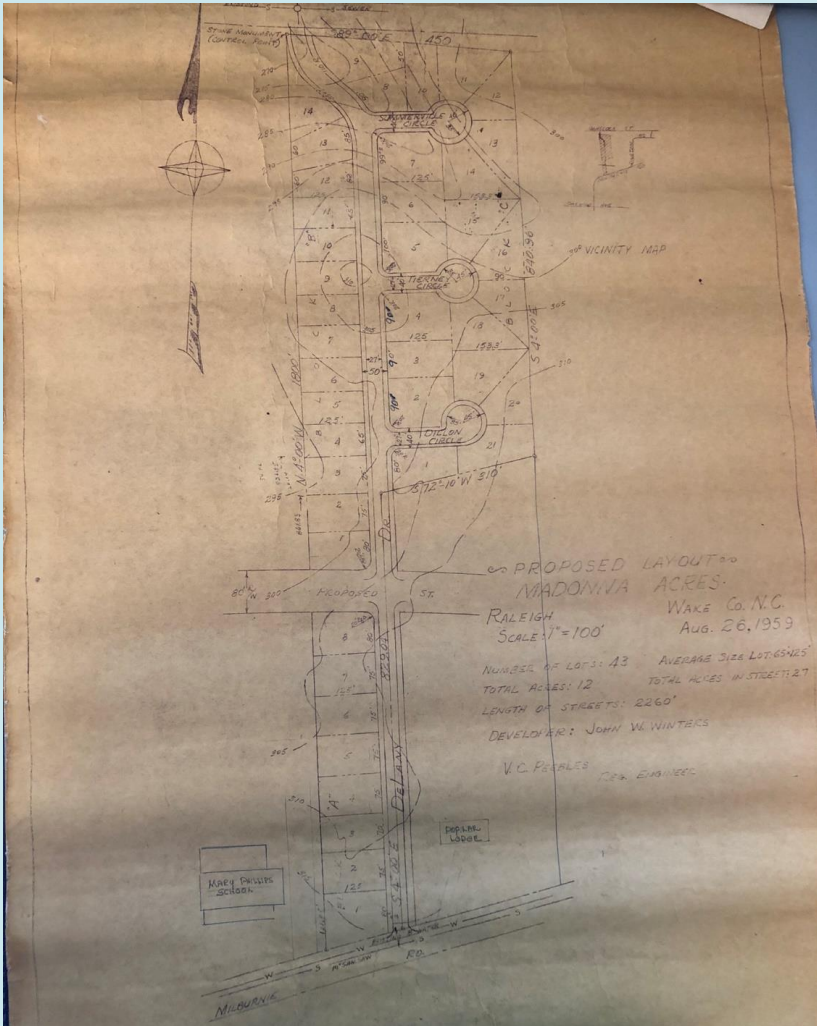
**Full HOUSEPOWER—**  
Here is insurance that your electrical way of life gets all the power it needs through up-to-date, complete home wiring.



**Modern Electric Appliances—**  
Take time to browse around the all-electric kitchen and see the host of other electric servants designed to save you time, steps and effort.



**Light Conditioning—**  
You'll delight in the light for living schemes made possible by planned and placed lighting combinations... a perfect blending of decorative beauty and visual comfort.

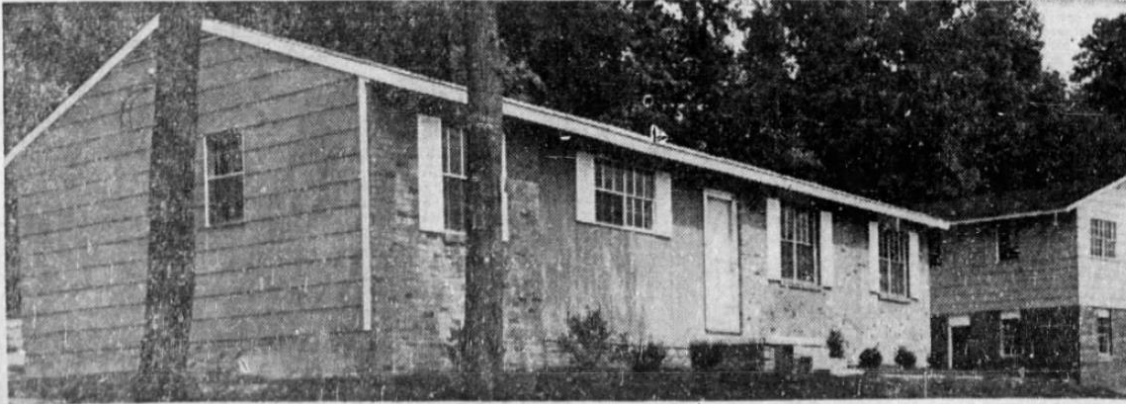


# Raleigh's Black Heritage and Historic Places Study

Architects & Builders: John W. Winters & Co.

## OPEN HOUSE

Saturday  
& Sunday



2 'til 6 p.m.

PINEHAVEN  
HOMES

3 and 4 bedroom homes, fully carpeted, range and refrigerator. Payments as low as \$75 per month with \$200 down for qualified families. **DIRECTIONS:** Go out Rock Quarry Road, turn left at Quik Pik Store.

JOHN W. WINTERS & CO.  
Real Estate Brokers & Builders  
507 E. Martin St., Raleigh, N. C.  
PHONE 828-5786

- Heritage Heights
- Cedarwoods Country Estates
- Quarry Hills
- Hunter Park
- Willow End

# Raleigh's Black Heritage and Historic Places Study

---

## What are the products?

- Fieldwork and Survey
- Conduct up to 10 oral history interviews
- Prepare narratives that incorporate property-specific history gathered from field work, archival research, previous surveys, reports, or other historical documentation completed in the area
- Identify themes or locations related to African American history and heritage where there are gaps in knowledge
- Identify properties for placement on the State's Study List

# Thank You





# Helpful Project FYIs

## How to Reach Us

- Project page on [raleighnc.gov](http://raleighnc.gov) (Search: Building History)
- Online survey open until 9/20
- Summary and recording of tonight's meeting
- [historicpreservation@raleighnc.gov](mailto:historicpreservation@raleighnc.gov) or 919-832-7238

Housing & Neighborhoods flyer: [rehab@raleighnc.gov](mailto:rehab@raleighnc.gov) or 919-996-4330



# Questions?

