

Planning & Development
Transportation

Chavis-Dix Strollway

Overview

September 9, 2024



Raleigh



Overview

- Project Background
- Route Planning Evolution
- Design Opportunities
- Next Steps



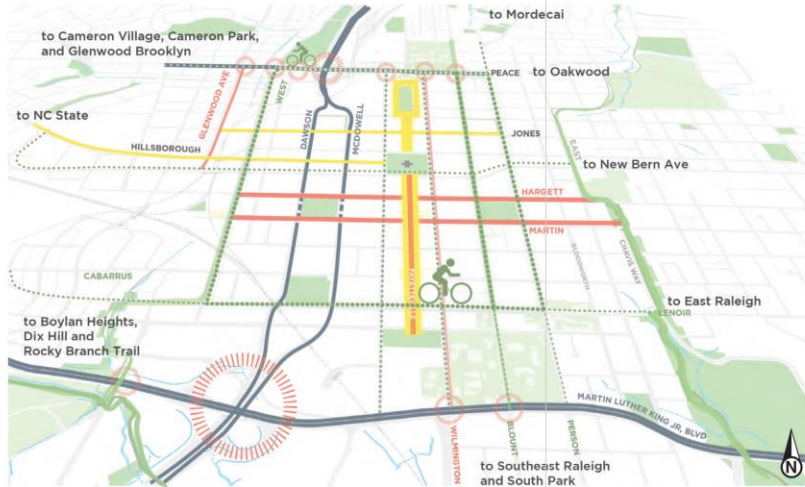


*“A Cultural Trail
Connecting
Chavis Park to
Dix Park”*

Inspired by the Indianapolis Cultural Trail

Project Background

2015: Downtown Plan



2020: Dix Park Master Plan

*“The City of Raleigh is making significant investments in the historic Chavis Memorial Park and the new Dorothea Dix Park. These are both important landscapes and demonstrate commitment to creating equitable public spaces for all to enjoy. **The city is excited to launch planning efforts focused on the implementation of a Strollway that would connect these two historic parks.**”*

The Strollway Concept

Introduced by Charles A. Flink, a local landscape architect.

An urban cultural trail along South Street corridor connecting Chavis Park to Dix Park.

Touches key places of historic and cultural significance: Chavis Park, Shaw University, Performing Arts Center, Heritage Park, Dix Park.

South Street is a low volume street that can host a “sidepath” style urban trail development project inspired by the design of the Indianapolis Cultural Trail.



Image source: Indianapolis Cultural Trail

Project Background

2022: Funding Allocation

South Park Heritage Walk and the Chavis-Dix Strollway received Community Project Funding in the federal FY23 budget from Rep. Deborah Ross.

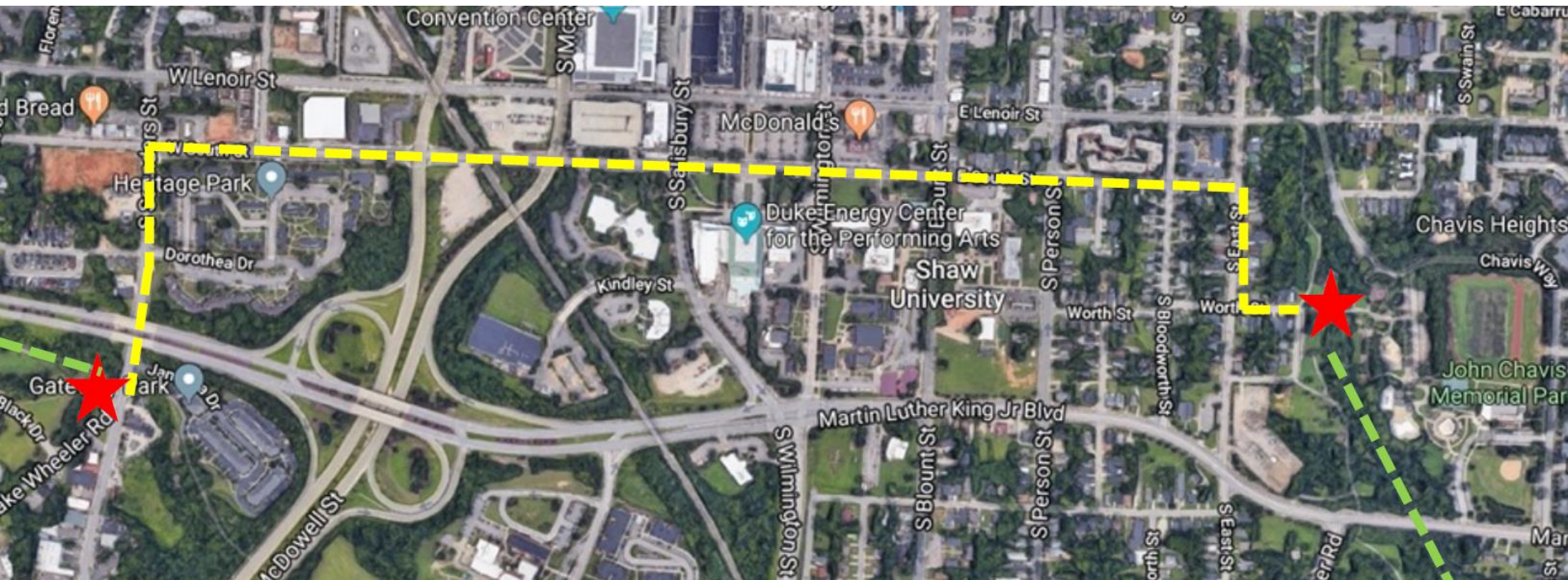
Raleigh engaged citizens to understand the community's priorities for the project.



Route Planning Evolution



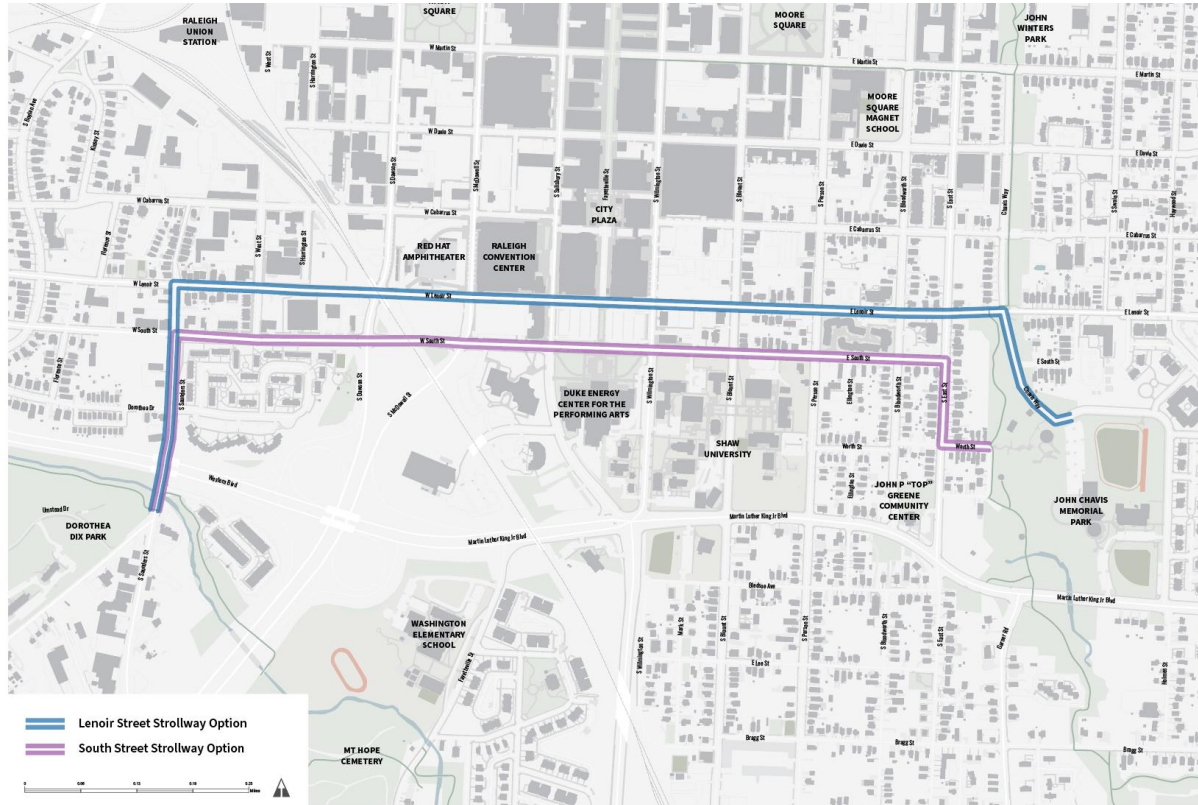
2021: Concept Envisioned along South St.



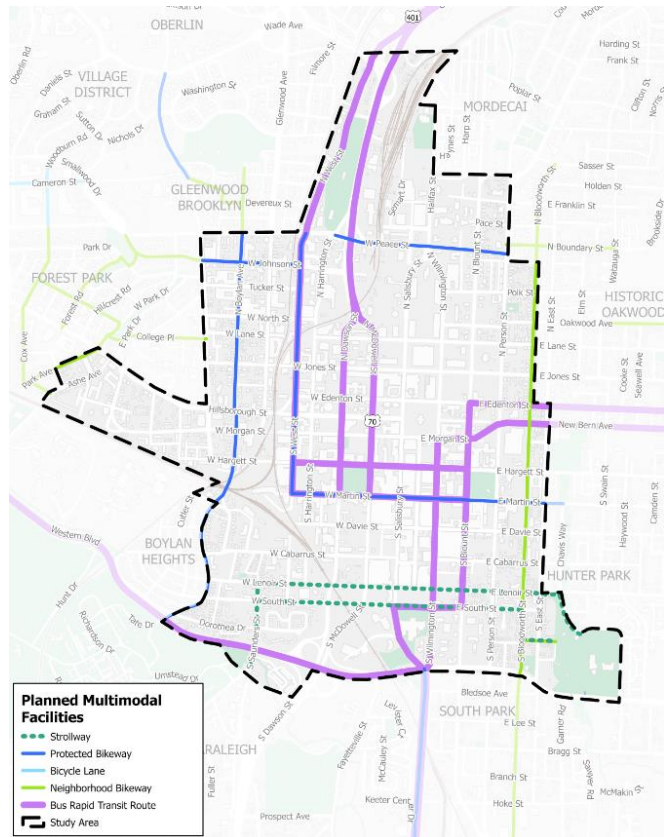
October 2021: Stroll the Street along Lenoir St.



September 2022: Route Options Engagement



May 2024: Downtown Mobility Open House

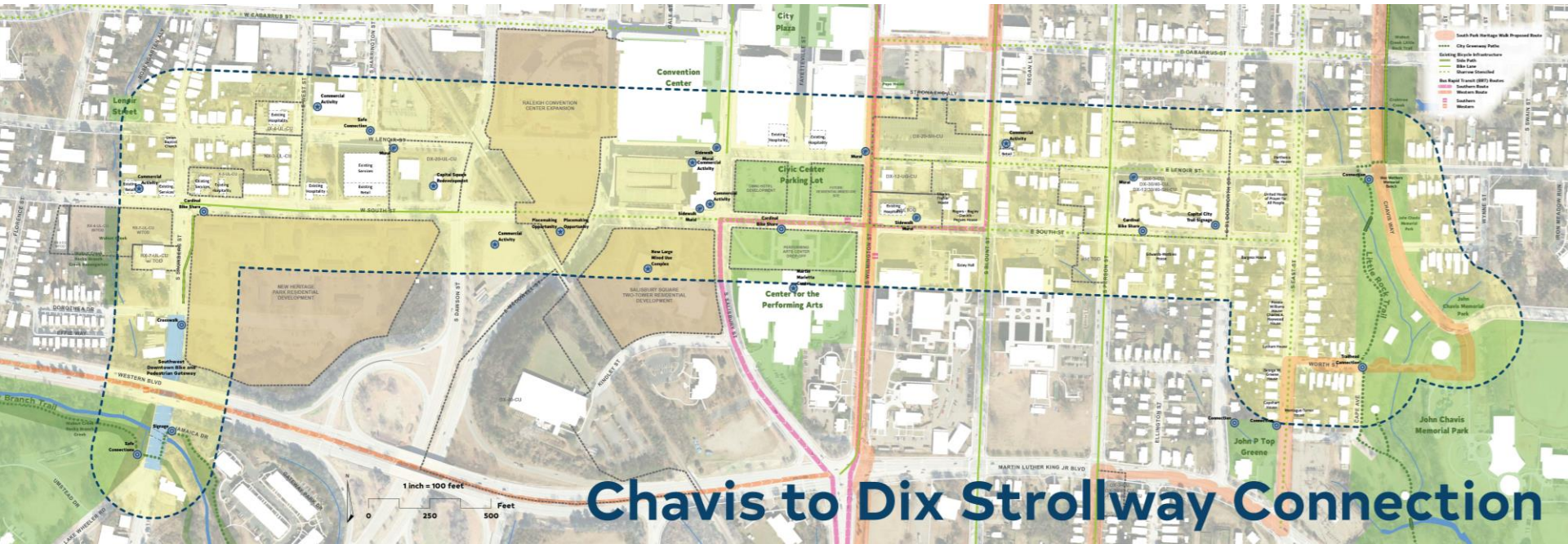


Design Opportunities along the Cultural Strollway Route



Key Highlights of the Cultural Strollway

- Connects key places of historic and cultural significance highlighted by community.
- Several key redevelopments underway along South Street.
- Offers opportunities for placemaking within public and private realm – connections for mobility, commercial activation and public art.





Local Businesses



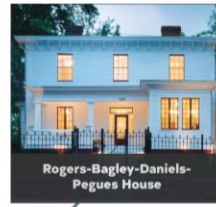
Red Hat Amphitheater



Convention Center



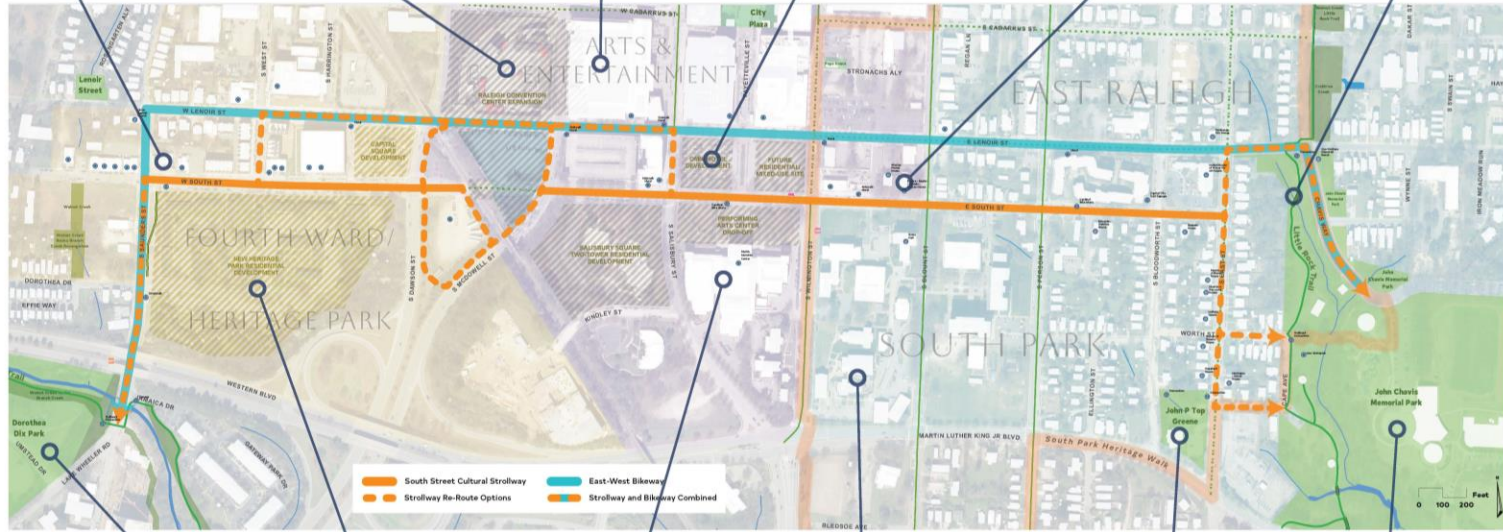
Future Omni Hotel



Rogers-Bagley-Daniels-Pegues House



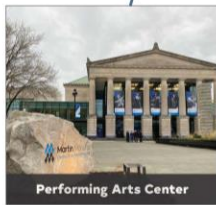
Little Rock Trail Greenway



Dorthea Dix Park



Heritage Park



Performing Arts Center



Shaw University



John P. "Top" Greene



John Chavis Memorial Park

Key Landmarks along the Strollway



Cultural Interpretation



Painted Intersections



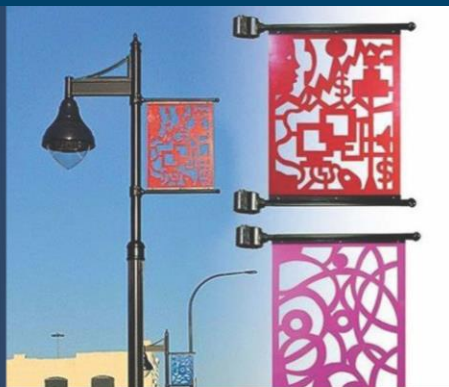
Artistic Experience



Stormwater Capture



Small Park/Parklet



Unique Banners



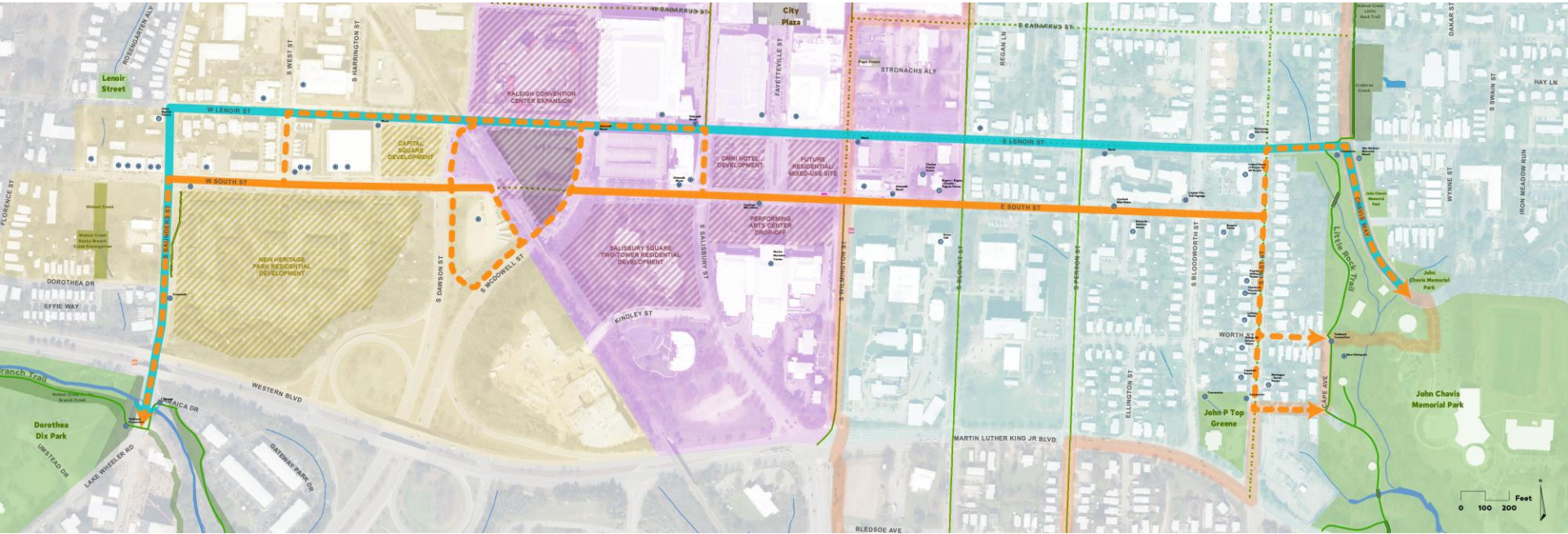
Innovative Bike Racks



Lighting

Possible Features along the South Street Cultural Strollway

Proposed South Street Cultural Strollway



- 
South Street Cultural Strollway
- 
Strollway Re-Route Options
- 
South Park Heritage Walk
- 
East-West Bikeway
- 
Strollway and Bikeway Combined
- 
Fourth Ward/Heritage Park
- 
Arts & Entertainment District
- 
East Raleigh/South Park

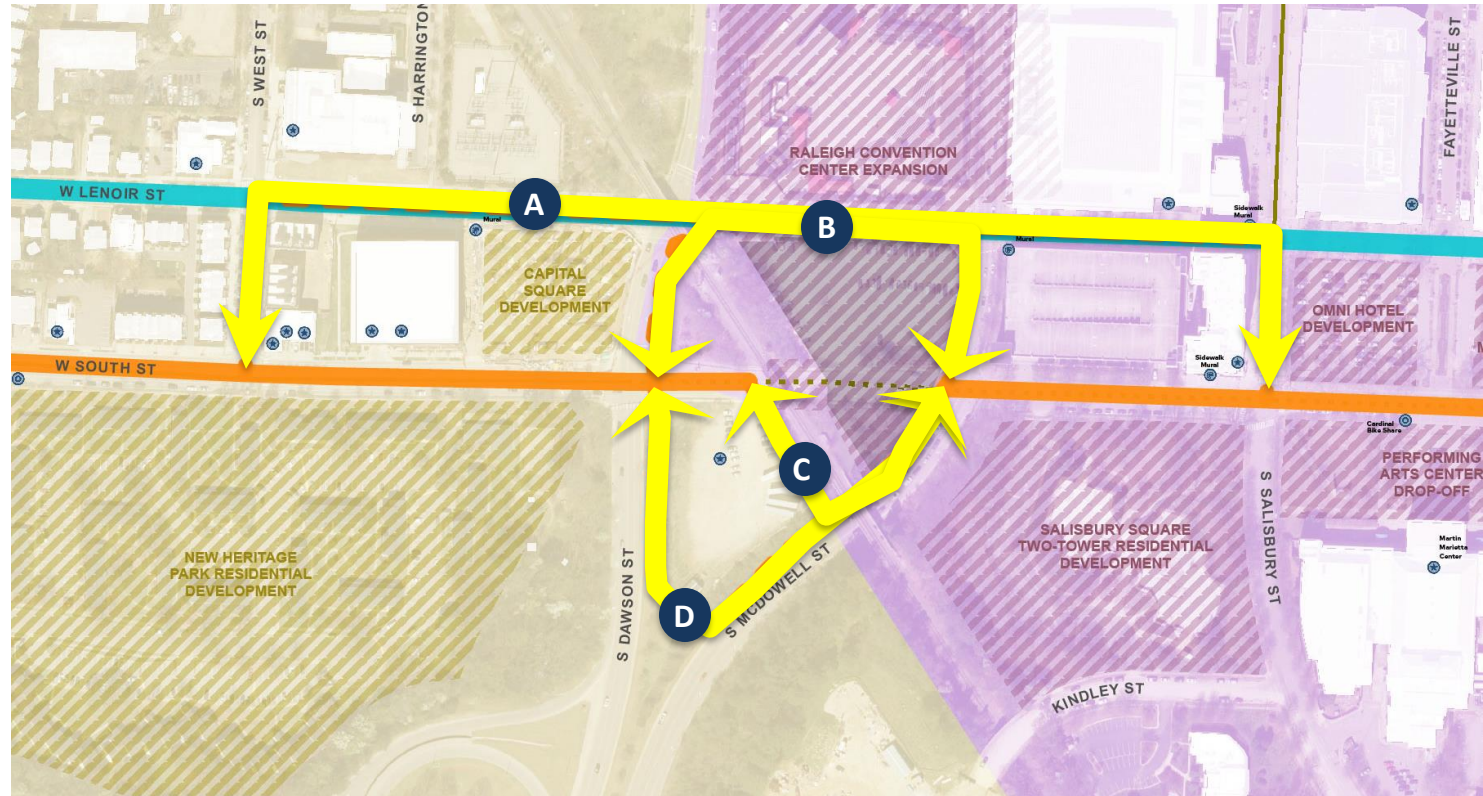
Design Options for Route Considerations: Arts/Entertainment and Fourth Ward/ RHA Districts



Possible Re-Routes around RCC Expansion

Options

- A** West-Salisbury Reroute
- B** Dawson-McDowell Reroute
- C** Path Along Railroad
- D** Dawson-McDowell Connector



Design Options for Route Considerations: East Raleigh/ South Park District

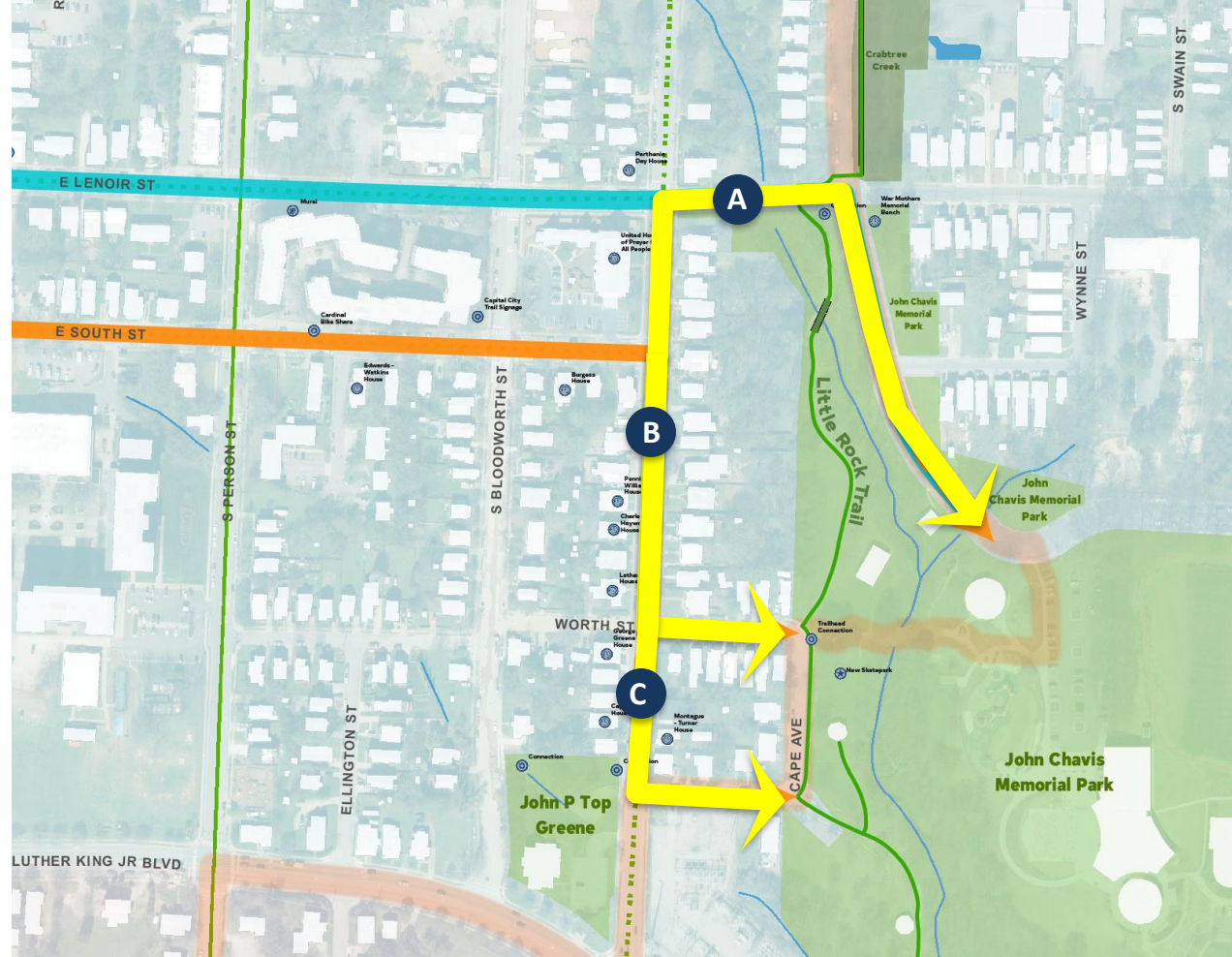


Optional Entries into Chavis Park

Options

- A** Head North on East to Lenoir, heading east to Chavis Way
- B** Head South on East, then east along Worth Street
- C** Head South on East, then east along Cape Avenue

-  South Street Cultural Strollway
-  Strollway Re-Route Options
-  East-West Bikeway
-  Strollway and Bikeway Combined



Next Steps



Goals for Today

- Learn about the key landmark places of importance along the Strollway
- Review the design options
- Let us know your preferred design options for the South Street Cultural Strollway sections in various districts
- Review placemaking element options
- Let us know your top 3 design elements



Future Engagement Opportunities

- Follow-up engagement opportunity upcoming in Fall (Downtown Mobility study)
- Coordination with South Park Heritage Walk (SPHW) Trail design concept underway
 - Next SPHW Community event October 21st at Chavis Community Center



Questions?

