

IN THIS ISSUE

Mine Creek Greenway Trail Improvement Project
City-Owned Parking Decks - Equipment Replacement Update
West Neuse Sewer Interceptor Project – Wetland Concerns
Wake Bus Rapid Transit: Southern Corridor Update
Weekly Digest of Special Events

Council Follow Up Items

NCDOT Clean-Up Efforts Along Interstates
Public Comment - Follow-up with Nicole Williams and Kara Sanders (Mayor Pro Tem Branch)

Budget Work Session - Monday - 4:00 P.M.

Reminder that Council will meet **Monday** in a scheduled budget work session at **4:00 P.M.**
The agenda for the work session was posted to the electronic agenda management system Thursday.
Reminder that Council will also convene in monthly scheduled budget work sessions as follows:

Upcoming Budget Work Session Schedule

- Monday, April 10 4:00 P.M.

Work Session - Tuesday, March 14 - 4:00 P.M.

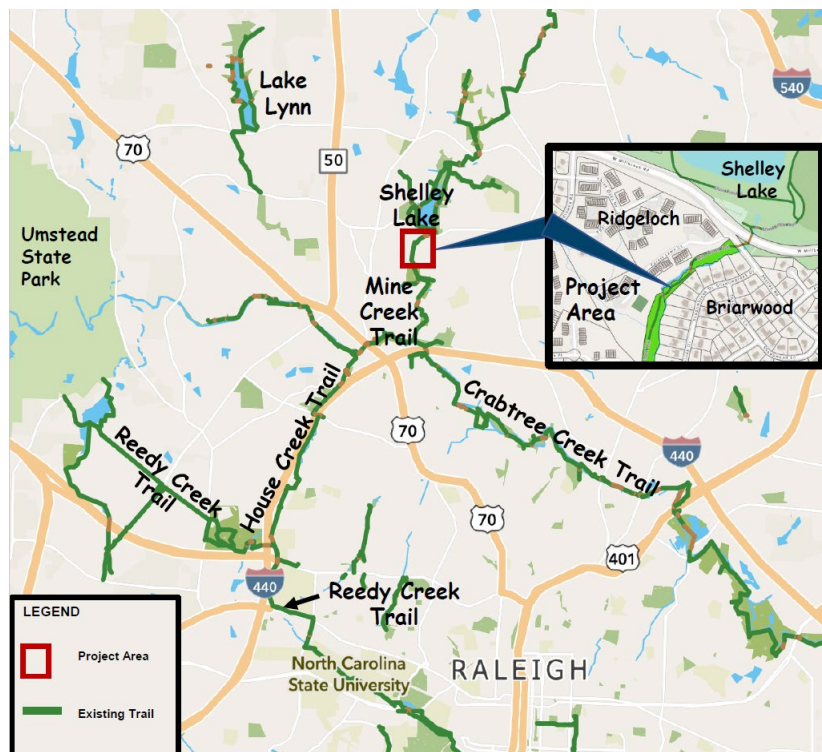
Reminder that Council will meet next **Tuesday** in a scheduled work session at **4:00 P.M.**
The agenda for the work session is also posted to the electronic agenda management system.

INFORMATION:

Mine Creek Greenway Trail Improvement Project

Staff Resource: Lisa Schiffbauer, Raleigh Parks, 996-4785, lisa.schiffbauer@raleighnc.gov

The Mine Creek Trail is located in north Raleigh and parallels Mine Creek between Sawmill Road and the Crabtree Creek Trail just north of I-440. The trail is approximately four miles in length and is an important north-south connection within the Capital Area Greenway System. Staff is currently coordinating [improvements to a section of the Mine Creek Trail](#) just [south of W. Millbrook Road](#), particularly to address two aged pedestrian structures. The need to replace these structures was identified due to the high use of this trail section, the overall aged condition of the structures and they are not at the size and standards currently used on the greenway system. Both structures are constructed of timber and are 8-foot in width, however, the new standard greenway standard includes a minimum of 10-foot width and concrete decking. The asphalt trail section between the two structures has had limited repairs due to limitations of access across the bridges.



Two project alignment options were considered to address necessary improvements in this location. Option 1 includes the replacement of the existing two structures with new structures and new asphalt. Option 2 includes realigning the trail to the west side of Mine Creek, along an existing sewer easement clearing. Staff is recommending Option 2 to be selected as the preferred alignment to the Parks, Recreation and Greenway Advisory Board (PRGAB) at the board's next scheduled meeting (March 16, 6 PM). Option 2 does require the acquisition of a greenway easement from the adjacent community which is the Ridgeloach Homeowners Association (HOA). The Ridgeloach community has expressed concerns and opposition regarding moving the trail closer to their community, however, the project team will continue to work with the community on addressing these concerns through the final design process. The preferred alignment, Option 2, provides the

most resiliency for the greenway system, the safest alignment for greenway users, lower cost, and minimal environmental impacts, as compared to Option 1.

It is anticipated that the PRGAB will provide a recommendation during the April 18 City Council meeting. For more detailed information on this project please visit the [project website](#).

(No attachment)

City-Owned Parking Decks - Equipment Replacement Update

Staff Resource: Matthew Currier, Transportation-Parking, 996-4041, matthew.currier@raleighnc.gov

In December 2020, a contract for consulting and project management services was executed with Kimley-Horn to assist the City in replacing aged and discontinued parking deck equipment. As a part of that process, staff held several stakeholder meetings with the Downtown Raleigh Alliance (DRA), downtown hoteliers, large office building owners, and internal City departments to discuss the current equipment, the limitations and desire for new parking deck equipment. These meetings along with the national expertise that Kimley-Horn brought to the project resulted in a thorough and forward-looking set of requirements that were included in a *Request for Proposals* (RFP) procurement process released in June 2021.

Six highly competitive responses from major parking deck equipment manufacturers were submitted in response to the RFP. After a review of the responses by a cross-departmental team, SkiData, Inc was selected as the winning proposal. Council authorized staff to contract with SkiData at the November 16, 2021 City Council meeting.

Installation of the new equipment is scheduled to begin at the Raleigh Municipal Building Parking Deck at the end of March with an anticipated go live date of early May. Remaining parking decks will have equipment installed over the next 12 months. Included with the *Update* materials is a staff memorandum which provides detail on the current parking deck equipment, the new equipment and functionality, installation schedule and related signage projects.

(Attachment)

West Neuse Sewer Interceptor Project – Wetland Concerns

Staff Contact: Janeen Goodwin, Raleigh Water, 996-3494, janeen.goodwin@raleighnc.gov

Staff with Raleigh Water began construction of an important sewer interceptor replacement (West Neuse Sewer Interceptor (WNI)) project along the Neuse River from Anderson Point Park to Alvis Farm Park (see project map attached) in November 2022. The project is replacing approximately 26,000 linear feet of 48- and 54-inch sanitary sewer pipe with 60- and 66-inch pipe primarily along the west side of the Neuse River. As part of the asset management program, condition assessment of this critical infrastructure identified the pipe to be in poor condition and replacement is necessary to prevent system failure.

On January 16 the Wake Audubon Society emailed a letter of concern regarding the ephemeral wetland pools in Anderson Point Park to Council and City staff in relation to the WNI project construction. In response to the concerns, staff with Raleigh Parks (PRCR) and Raleigh Water made a site visit on January 19 to investigate and review the site conditions. PRCR issued a summary of the site visit including recommendations. Raleigh Water engaged our environmental subconsultant for the project, Carolina

Ecosystems, who reviewed the site visit summary, visited the site on February 6, and provided a summary of the permitting and agency review process for the WNI project as well as site visit observations. PRCR and Raleigh Water provided a presentation to a subcommittee of the Parks, Recreation, and Greenway Advisory Board on March 1 to discuss the project, highlight site visit findings, review permitting and agency review process for the project, and address concerns raised by the Wake Audubon Society. Raleigh Water also issued a response letter to the Wake Audubon Society that summarizes findings from the site visits and the permitting and agency review process (see attached letter for reference).

Raleigh Water seeks to mitigate environmental impacts as much as possible during construction and is complying with the environmental permitting for this project. This project required extensive permitting with State and Federal Agencies, including US Army Corps of Engineers (USACE) & NC Division of Water Resources (NC DWR). The wetlands permitting process for this project required the USACE to conclude that the project has the least wetland impact practicable considering project constraints. In this location, the avoidance of temporary wetland impacts was not possible due to the presence of the existing sewer line and depth of the proposed interceptor (22 to 25 feet deep). Since this is a temporary construction impact, this area will be returned to pre-construction grades and allowed to naturally revegetate into a forested wetland again following completion of construction activities. In addition, Raleigh Water has a full-time on-site engineering inspector assigned to the project who provides daily oversight to the construction contractor's work and ensures that permit requirements are being met throughout the project construction.

The project is scheduled to be complete in December 2024. Additional general information regarding the project may be found on the [project website](#) as well as in the information provided with the *Update* materials.

(Attachments)

Wake Bus Rapid Transit: Southern Corridor Update

Staff Resources: Het Patel, Transportation-Transit, 996-5120, het.patel@raleighnc.gov

David Eatman, Transportation-Transit, 996-4040, david.eatman@raleighnc.gov

On March 9 U.S. Transportation Secretary Pete Buttigieg announced funding for 18 large transit projects located in 11 states across the nation in the amount of \$4.45 billion for construction. These large rail and bus rapid transit (BRT) projects were recommended to receive federal support in President Biden's Fiscal Year (FY) 2024 Budget Request to Congress. Nine of those projects would receive funding recommendations for the first time. Others on the list are already under construction or far along in the planning process. In addition to recommendations for FY 2024 funding, the Federal Transit Administration (FTA) has allocated \$1.1 billion in FY 2022 and 2023 funding to 31 transit projects nationwide. This funding will help improve transit access to the millions of Americans who depend on it every day, help reduce emissions, and create good-paying construction jobs across the country.

The FTA Capital Investment Grant (CIG) Program provides funding for major transit infrastructure capital investments nationwide. Projects accepted into the program must go through a multi-year, multi-step process according to requirements in law to be eligible for consideration to receive program funds.

The Wake Bus Rapid Transit (BRT): Southern Corridor was one of the nine projects recommended to receive funding allocation within President Biden's FY24 Budget Request. The Wake BRT Southern Corridor is

allocated \$85.91 million in funding from the FTA. A total of \$8.13 million is funded from FY23 and prior allocations; \$77.78 million is recommended through FY24 Presidential Budget Proposal.

These allocations represent a key step in the process of bringing BRT to the community. The City will continue advancing design for the Wake BRT Southern Corridor project including coordination with the FTA to demonstrate readiness to receive a construction grant agreement under the CIG Program. The Southern Corridor is anticipated to progress to 30 percent design completion sometime in the Summer of 2023.

Additionally, the FTA released its Annual Report on Funding Recommendations for Fiscal Year 2024 for CIG Program. This included releasing the CIG Project Evaluation and Ratings, which marks a crucial step in project implementation for the Wake BRT: Southern Corridor project. The project received an overall "Medium-High" rating which makes it eligible for federal funding under the CIG Program.

The City of Raleigh submitted the Wake BRT: Southern Corridor project to be rated in the FTA Small Smarts program in August 2022. GoRaleigh proposes to implement BRT along South Wilmington Street connecting the Raleigh central business district with the town of Garner and the North South Station at Garner Station Boulevard, totaling approximately 5.1 miles. The project includes construction of about 3.8 miles of new, dedicated transit infrastructure improvements between the GoRaleigh station in downtown Raleigh and North South Station at Garner Station Boulevard, as well as approximately 1.3-miles of service in general traffic lanes between Garner Station Boulevard and the Walmart Supercenter at Rupert Road. The project also includes traffic signal priority at intersections throughout the 5.1-mile corridor and nine (9) weather-protected BRT stations. All BRT stations will be designed to include specific branding, level boarding platforms, real-time bus arrival information, schedule and route information and universal ADA accessibility.

(No attachment)

Weekly Digest of Special Events

Staff Resource: Sarah Heinsohn, Office of Special Events, 996-2200, sarah.heinsohn@raleighnc.gov

Included with the *Update* materials is the special events digest for the upcoming week.

(Attachment)

Council Member Follow Up Items

Follow Up from the February 21 City Council Meeting

NCDOT Clean-Up Efforts Along Interstates

Staff Resource: Steve Halsey, Transportation, 996-6446, steven.halsey@raleighnc.gov

During the meeting Council requested staff follow up with NCDOT on clean-up efforts along local interstates. Beginning in April, a new contractor working for NCDOT will perform litter removal on all local interstates monthly throughout the year. In addition to this contract, NCDOT has a "Sponsor a Highway" program

where litter removal on sections of the interstates can be sponsored by a local business. All sponsored sections are picked up monthly as well.

Additional information on NCDOT litter management can be found at:

<https://www.ncdot.gov/initiatives-policies/environmental/litter-management/Pages/default.aspx>

Questions or concerns about litter on local NCDOT roads can be submitted to <https://www.ncdot.gov/contact/Pages/default.aspx> or by phone at 919.317.4700.

(No attachment)

Public Comment - Follow-up with Nicole Williams and Kara Sanders (Mayor Pro Tem Branch)

Staff Resource: B. Lamont Taylor, Housing & Neighborhoods, 996-4278, lamont.taylor@raleighnc.gov

During the meeting Council requested that staff follow-up with the public speakers that expressed needs related to securing stable, affordable housing. As requested by Council, staff has reached out to both speakers to follow-up with their concerns.

(No attachment)

To	Marchell Adams-David, City Manager
Thru	Michael Moore, Assistant City Manager
From	Matthew Currier, Parking Manager
Department	Transportation
Date	March 10, 2023
Subject	City Owned Parking Deck Equipment Replacement

Current Parking Deck Equipment

The parking deck equipment currently installed in all City-Owned parking decks, except for the Performing Arts Deck, is from a manufacturer named Federal APD. This equipment was installed between 1986 and 2009 and only received limited upgrades and new functionality during that time. In 2012, 3M purchased Federal APD and two years later in 2014 discontinued the product line and closed the parking division. This left the city with parking deck equipment that was no longer supported by the manufacturer and a dwindling supply of replacement parts to keep the equipment properly functioning. It was after this announcement that staff started the initial process to replace the equipment with a modern system suited to meet the demands of tomorrow.

The current parking deck equipment relies on cashier booths and attendants as the primary means of egress from the deck. This process is often slow and introduces human error into the cashiering function. Pay-on-foot prepayment is offered at the Convention Center parking deck, but it is limited in function. The system also only offers limited functionality and products to meet customer needs. Due to these limitations, staff are unable to offer flexible parking options to customers. Only a single user can be attached to a parking account, which limits the ability for customers to share accounts and operate carpooling programs. Staff are also provided very limited information about parking deck occupancy and customer tendencies which results in underutilization of the parking decks and few insights on what new products customers may be interested in or how they are utilizing the decks.



(Current pay on foot station and lane equipment in Convention Center Parking Deck)

The limited functionality of the parking deck equipment has also resulted in often confusing and restrictive operating procedures for hotel guests in both the Marriott and Residence Inn.

The current system allows for customers to use credit cards, cash and coins to pay for their parking sessions, but no mobile pay option outside of limited nested areas in the Performing Arts and Cabarrus Street decks. Finally, the equipment is only able to provide limited instructions in English.

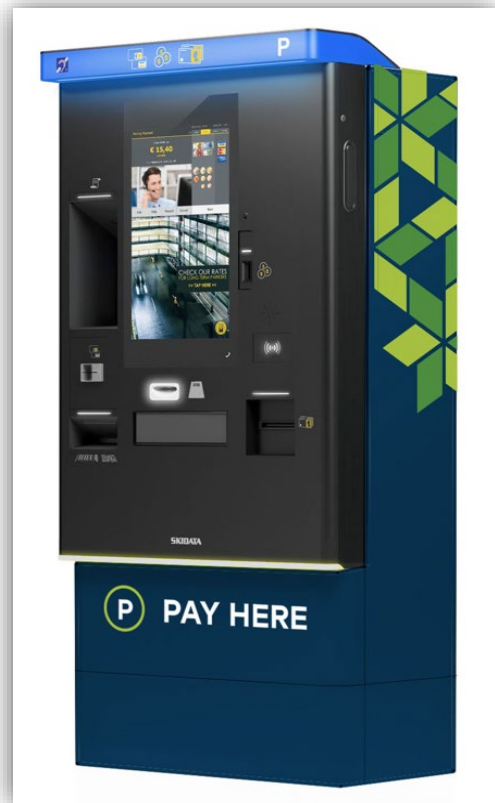
New Parking Deck Equipment

After an extensive cross-departmental review process, staff chose SkiData, Inc as the winning bidder to provide the new Parking Access and Revenue Control System in the City Parking Decks.

SkiData, Inc is a global leader in parking deck equipment and has more than 1,000 systems installed in North America and over 10,000 world-wide. SkiData is also very familiar with the Raleigh market. They provide systems and support at RDU International Airport as well as several prominent downtown parking decks like Smokey Hollow, The Dillon Building and Block 83 developments. Staff believes customers are already familiar with this equipment and discussions with owners and operators in

Raleigh provided staff with a high level of confidence in this decision. Furthermore, having a high concentration of equipment from the vendor in the area guarantees fast and responsive maintenance service.

The new parking deck equipment will transition the city-owned parking decks into a modern and connected operation that is poised to provide a high level of customer service in the post-pandemic environment of hybrid workplaces and employee flexibility. The new system will be fully automated and include park on call services for customers to instantly reach a live support person if they have any questions. The cashiers currently in the booths will be transitioned to parking deck ambassadors who will provide fast in person service to customers with questions or needs like jumping car batteries. This combination of 24/7 support and in-person parking ambassador services will result in a higher level of service for customers. All the parking decks in downtown except for the Wake County deck have adopted this same modern approach.



(Images of new parking deck lane equipment and pay on foot station)

The transition to an automated system comes with new pay-on-foot stations and in lane systems with large color screens that are ADA compliant with clear instructions in multiple languages. The cash and card pay-on-foot station includes a 21.5in touch screen with access to real-time live support if customers have questions. These large terminals allow staff to incorporate multiple payment types like Google Pay and Apple Wallet in addition to traditional payment options with cash and credit cards. Staff will

be able to include access to parking maps and additional information and videos into the kiosks as well providing a high level of customer service. Staff are incorporating a mobile payment option for customers to bypass the pay-in-lane or pay-on-foot options and use their smartphone to pay for their parking session quickly and conveniently. These options will increase the speed at which customers are able to leave the deck and reduce frustration for customers waiting in line to exit. Coins will not be accepted at the pay-on-foot or pay-in-lane kiosks.

The new system will also incorporate License Plate Reading (LPR) technology into the system to provide further services, safety and frictionless access. LPR integration will allow monthly customers to drive into and out of the decks quickly without having to interact with the equipment. Customers who pay via mobile or pay-on-foot stations will also be able to leave the parking decks without having to interact with the equipment. In both cases, the system will link the license plate to the entrance and payment allowing quick frictionless egress. The system will also allow staff to search and find lost vehicles, assist law enforcement in finding stolen vehicles and limit long-term storage of vehicles in the decks.

The backend software provides staff with data rich business intelligence software that is open architecture and fully compatible with the City's business intelligence. This will allow staff to have quick and easy access to understand customer behavior and parking deck occupancy and then push that data out to the City's website to show a live count of available parking spaces in each parking deck.

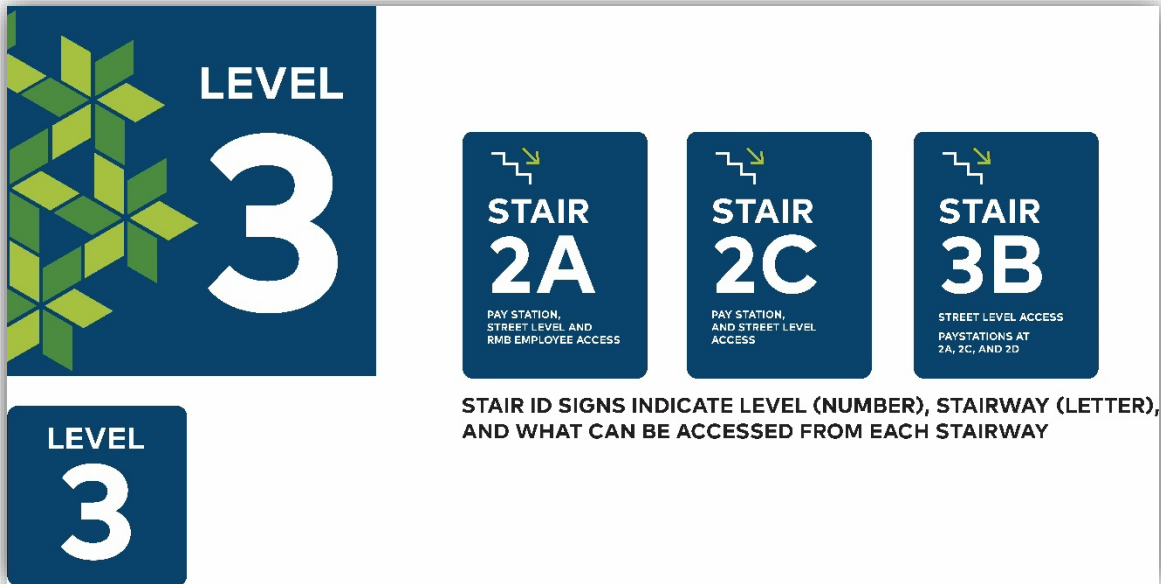
Finally, the new equipment will allow staff to offer new, more flexible, parking options like pay as you go accounts for frequent users who may not need to be downtown often enough to purchase a monthly account but would like the flexibility to be billed monthly and access the decks in similar ways to a monthly user. Staff will also be able to attach multiple license plates to user accounts to allow them to share parking credentials with coworkers or carpool users and be billed a pre-determined share.

Parking Deck Signage & Aesthetics

As a part of the transition from a parking booth and cashier system to an automated system with pay-on-foot systems, staff will be implementing an updated and branded signage package.

This signage package will be focused on directing customers to the pay-on-foot stations, making them aware of the mobile pay options and connecting the city branding to the decks.

Below are some renderings of the signage package.



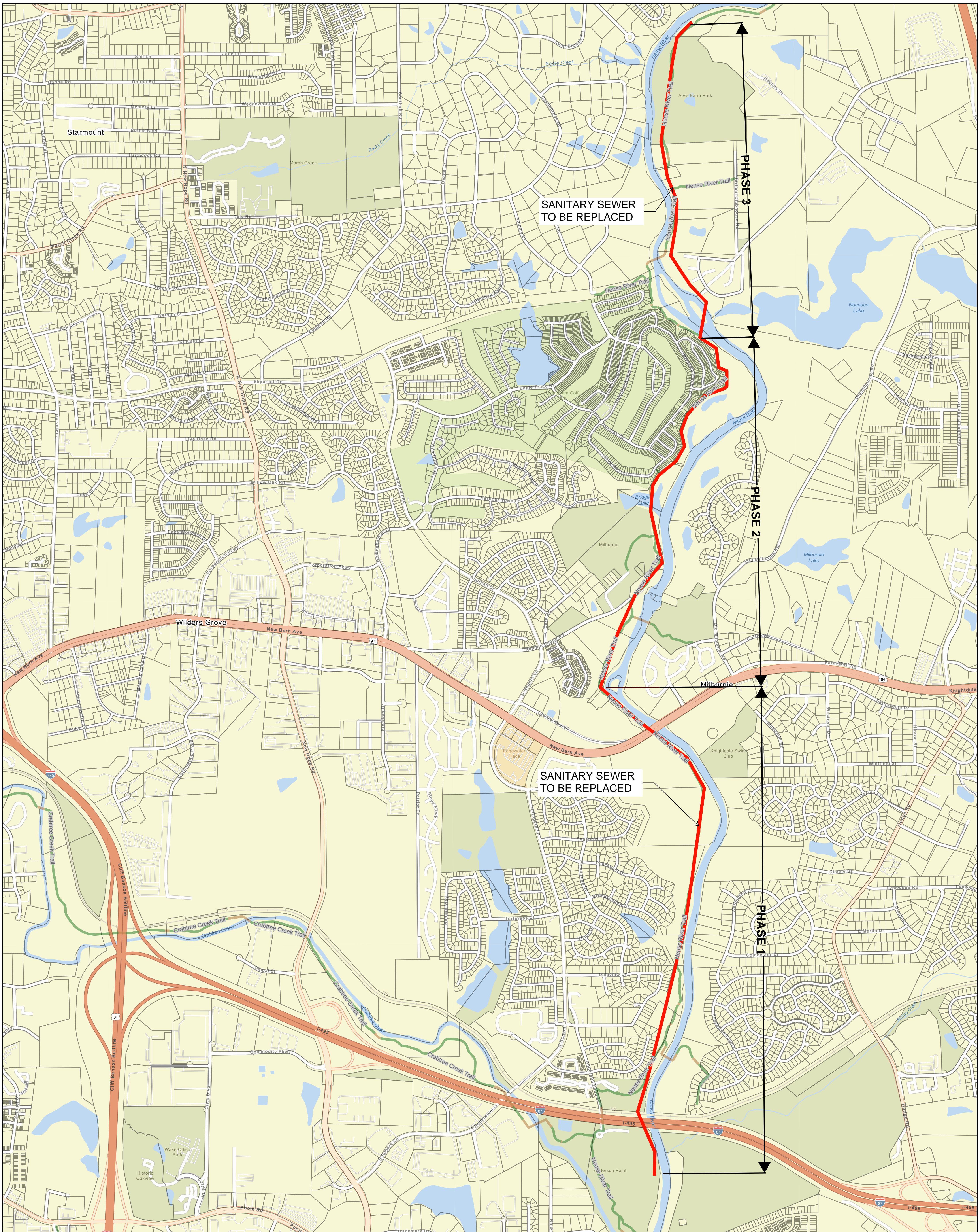
Installation Schedule and Impacts

Installation of the new equipment will take place in phases and is scheduled to be fully completed over the next 12 months starting in late March 2023 at the Raleigh Municipal Building. Modernizing the parking decks includes some minor demolition to remove the parking deck booths and minor flat work to reconstruct the concrete islands that contain the parking deck equipment. In some cases, the islands need to be extended to work appropriately with the LPR system.

The practice of phasing the implementation will reduce the impact on customers and allows all the parking decks to be operational throughout installation. Staff will be in constant communication with monthly parking customers to ensure they are aware of the coming changes, any impacts to ingress or egress and the benefits of the new system.

Once installation is completed at a given parking deck, there will then be parking ambassadors dispatched to the parking deck to help customers and answer questions for 30 days post installation. Staff believes this high touch approach will lead to fewer concerns and a softer transition to a modernized parking deck experience.

You will begin to see construction and installation of the new parking deck equipment at the Raleigh Municipal building in late March 2023. Staff will be communicating the changes to the parking decks to monthly customers and the general public prior to the start of the installation to inform them of the upcoming changes and help make the transition as smooth as possible.



West Neuse Interceptor - Overall Map



0 800 200 3200 ft

1 inch equals 800 feet

Disclaimer
 iMaps makes every effort to produce and publish the most current and accurate information possible. However, the maps are produced for information purposes, and are **NOT** surveys. No warranties, expressed or implied, are provided for the data therein, its use, or its interpretation.

January 15, 2023

From: Wake Audubon Society, P.O. Box 12452, Raleigh, NC 27605

To: City of Raleigh, 222 W. Hargett Street, Raleigh, NC 27601

Subject: Neuse River Sewer Realignment Affecting Wetland at Anderson Point Park

On a recent visit to Anderson Point Park, one of our members, John Connors, reported that clearing of vegetation for the realignment of the city's sewer line along the Neuse has damaged the ephemeral pools with small petrochemical spills and woodchip infill (see enclosed photo). Petrochemical pollutants leaking into this wetland system will kill it. The wood chips themselves may alter the water chemistry as they decay. This is not acceptable environmental stewardship. We have contacted Department of Parks, Recreation, and Cultural Resources Land Stewardship personnel and they are trying to address the situation with Public Utilities. We are grateful for their efforts. Please address these conditions before additional damage is done to the ecosystem.

We do not want to impede the progress of upfitting Raleigh's sewer system; however, the Public Utilities Department should review this leg of the project before it moves forward. We recommend that Raleigh's Public Utilities and Parks, Recreation, and Cultural Resources departments work together to ensure that we protect our natural resources, especially those in our park settings. Perhaps using organic wheat straw or silt fencing with a finer mesh to reduce the migration of pollutants into the wetland pools or scheduling installation of pipes in this section to the drier months of the year (June-October) when the wetland pools shrink or dry completely will resolve the problem. We are happy to lend our expertise.

The ephemeral wetland pools found just west of the sewer line easement along the Neuse River are one of the most important ecological features found at Anderson Point Park. These pools are the breeding site for a rich diversity of amphibians including: Marbled Salamander, Spotted Salamander, Red-spotted Newt, American Toad, Fowler's Toad, Eastern Narrow-mouthed Toad, Upland Chorus Frog, Spring Peeper, Southern Leopard Frog, Green Frog and Cope's Gray Tree Frog; along with numerous dragonflies and other aquatic insects. Outside of Horseshoe Farm Nature Preserve, we know of no other city park (excluding the greenway corridor itself) that boasts ephemeral pools that serve as a breeding site for so many amphibian species. Which is why we are concerned.

The Wake Audubon Society has a long history at Anderson Point Park pre-dating the City of Raleigh's ownership of the park. We have been counting birds there since the 1970s, and once the land was transferred to the city parks, our chapter quickly adopted the park. We have worked with and advocated for protection of its natural resources earning the Fred Fletcher Award for our stewardship. We know well the many rare plants and wide variety of birds, reptiles and amphibians that find refuge there and stir the interest of chapter members, neighbors, and visitors.

We would be happy to meet at your convenience with representatives from Public Utilities, Raleigh Parks, City Administration, and City Council so that we can agree on a strategy to protect these important wetlands as the sewer line project moves forward. You may contact me at audubonwake@gmail.com or 315-777-7123.



Respectfully,
Mary Abrams
President, Wake Audubon Society

Enclosure to Wake Audubon Society Correspondence Dated January 15, 2023
Subject: Neuse River Sewer Realignment Affecting Wetland at Anderson Point Park





March 8, 2023

Wake Audubon Society
P.O. Box 12452
Raleigh, NC 27601

Re: West Neuse Interceptor (WNI) Project – Anderson Point Park Wetland Impacts

Ms. Abrams,

Thank you for your letter dated January 15, 2023 regarding the referenced Raleigh Water (RW) project and Wake Audubon Society's concerns for the ephemeral wetland pools at Anderson Point Park. Raleigh Water seeks to ensure the protection of natural resources as much as possible during the construction of our projects, including this critical infrastructure replacement project. As you recommended, we have collaborated with Department of Parks, Recreation, and Cultural Resources (PRCR) personnel and made site visits to investigate the noted concerns (see attached summary from PRCR). Additionally, PRCR and RW have provided a presentation to the Parks, Recreation, and Greenways Advisory Board Subcommittee on Sustainability, Wildlife, and Urban Trees at the March 1st meeting to further inform and address Wake Audubon concerns.

For background, the WNI project was driven by a condition assessment in 2018 indicating there were serious structural issues which could lead to pipe failure. Raleigh Water began design and permitting to proactively protect against any environmental impacts from pipe failure. The project went through an intensive permitting process with multiple agencies including US Army Corps of Engineers and NC Division of Water Resources (see attached letters from Carolina Ecosystems, our environmental consultant and Black & Veatch, our project design engineer, for additional details). Approvals were issued for Water Quality Certification, Neuse River Basin Riparian Authorization, Nationwide Permit 58, and erosion control permits.

Specifically, the floodplain wetland of interest was identified during the permit process and avoidance was not possible due to the presence of the existing sewer line and depth of the proposed interceptor. As permitted and as this is a temporary construction impact, the area will be returned to pre-construction grades and allowed to naturally revegetate into a forested

*Raleigh Water: Serving the people of Garner, Knightdale, Raleigh, Rolesville,
Wake Forest, Wendell, and Zebulon areas.*

One Exchange Plaza Building | 1 Exchange Plaza | Suite 600 | Raleigh, North Carolina 27601
City of Raleigh (mailing address) | Post Office Box 590 | Raleigh, North Carolina 27602-0590



wetland again. We will make efforts to work with our contractor and avoid pipe installation during the winter breeding season, if possible.

Raleigh Water will continue to work in an environmentally responsible manner meeting all permit requirements and collaborating with PRCR. Towards that effort, RW has a full-time on-site inspector assigned to this project who is overseeing the contractor's work and ensuring all permit requirements are met.

Thank you again for reaching out and providing the opportunity to collaborate on these important issues.

Sincerely,

Janeen Goodwin, P.E.
Engineering Manager
City of Raleigh
Raleigh Water/Public Utilities
Capital Improvements Division

*Raleigh Water: Serving the people of Garner, Knightdale, Raleigh, Rolesville,
Wake Forest, Wendell, and Zebulon areas.*

One Exchange Plaza Building | 1 Exchange Plaza | Suite 600 | Raleigh, North Carolina 27601
City of Raleigh (mailing address) | Post Office Box 590 | Raleigh, North Carolina 27602-0590

**Summary & Notes from Anderson Point Park/West Neuse Interceptor (WNI) Sewer Line Site Visit
(issued 2/1/2023)**

Date: January 19th, 2023

Weather: Partly Cloudy, mild and calm, temperature ~ 70°F

Staff Present: Sean Gough, Raleigh PRCR - Natural Resources Section
Janeen Goodwin, Raleigh Public Utilities – Capital Improvements Division
Edwin Huff, Raleigh Public Utilities – Engineering Support/Inspection

Objective: To evaluate potential ecological impacts resulting from WNI project to the wetland pools located at Anderson Point Park.

Background:

As part of the ongoing WNI project, the existing sewer line easement located along the eastern edge of Anderson Point Park was expanded. The trees/shrubs growing within the expansion area along the western side of the previously existing easement were removed using a forestry mulcher or a similar type of equipment. Jurisdictional wetlands and floodplain pools lie within the permitted expansion area as well, and the mulching of the trees/shrubs have created large deposits of woodchips in and around the edge of the wetland pools. The City was contacted by a group of concerned citizens representing the Wake Audubon Society and asked to evaluate any potentially negative impacts to the wetland pools that may result from the deposition of wood chips, as well as to evaluate potential impacts from other elements related to the WNI project. Wetland pools such as those found at Anderson Point represent a unique habitat type with high ecological value, primarily due to the diversity of reptiles, amphibians, and insects that use these pools for breeding and reproduction. Members of Wake Audubon voiced concern over potential impacts to these wildlife taxa and have emphasized the need to preserve wetland pool habitats in the Raleigh area where similar habitats are becoming increasingly scarce.

On January 13th, 2023, Sean Gough from the Raleigh PRCR Natural Resources Section made an initial site visit to evaluate the information provided by the Wake Audubon members. During the visit, large deposits of wood chips were observed on the ground along the entire stretch of the easement and near the edge of the pools. A silt fence had been installed along the edge of the sewer line easement, between the easement and the wetland pools. The majority of the wood chips were located outside of the pools and on the opposite side of the fence. However, there appeared to be wood chips that had been pushed into the standing water of the pools during the installation of the fence, creating a small emergent berm of wood chips that extends the length of the pools adjacent to the easement (**Photos 1 – 3 below**). Additionally, three small puddles (< 4" diameter) were observed during the visit that appeared to have an oil-like sheen on the surface, possibly resulting from petrochemicals such as gas or hydraulic fluid (**Photos 4 – 6 below**). However, the source material that created the sheen could not be identified and may be the result of natural processes associated with the deposition of wood chips (i.e., leaching of oils contained within the wood, bacterial decomposition processes, etc.). Assuming that the

sheen was created by petrochemicals, then these appeared to be small "incidental spills" possibly resulting from residual fluid found on the equipment used to install the silt fence. The puddles were located outside of the wetland pools and on the opposite side of the silt fence and do not appear to represent a significant ecological threat given the small quantities of fluid observed and the uncertainty surrounding the source material responsible for creating the sheen.

Members of Wake Audubon who contacted the City were specifically concerned about the wood chips lying in the pools and the potential for petrochemical contamination of the pools. While the chemical contamination risk is currently very low, it is unclear how this deposition of wood chips into the pools might impact the diverse group of wildlife that utilize the pools as a resource, thus further research on the topic is recommended.

Notes from Site Visit on January 19th, 2023:

- Members of Raleigh Public Utilities and Raleigh PRCR met at Anderson Point Park to evaluate the potential impacts outlined in the letter from Wake Audubon and to discuss how best to address environmental concerns.
- Staff present from Raleigh Public Utilities explained that all of the impacts related to the WNI project have been properly approved and permitted, and that impacts to the wetland pools have been addressed through the permitting process as well as through wetland mitigation agreements.
- The deposition of wood chips into the pools was observed and discussed, which led to the revelation that the silt fence currently installed onsite is not aligned with the true extent of disturbance that has been permitted. The silt fence will eventually be moved to the true extent of the permitted disturbance area which encompasses most of the wetland pools. If there is standing water within the pools at the time that the fence is moved then the water will be removed using a water pump. The precise timeline for moving the silt fence and draining the pools (if necessary) is currently unclear.
- The manual draining of the pools may not be necessary if the work is completed in the warmer, drier months of the year. During the spring and summer, these ephemeral pools tend to dry up on their own and may not need to be drained. However, if the work is to be done in the winter or during other periods of the year that typically exhibit greater amounts of precipitation (i.e., hurricane season) then the pools may contain surface water that will be drained using pumps. Reptiles and amphibians utilize these pools as breeding habitat typically between the months of November to February and draining these pools during this time frame would be detrimental to those local populations.
- There may be an opportunity to reduce the size of the wood chip berm along the edge of the pools when the silt fence is relocated to the actual disturbance limit. Care must be taken not to disturb the soil/substrate layer within the pools if the removal of the wood chips is attempted.

- A single small puddle was observed during this site visit that exhibited a sheen on the surface, possibly related to residual petrochemicals such as oil or hydraulic fluid that may have dripped from a piece of equipment, but it is also possible that the sheen was produced by natural processes such as bacterial decomposition and/or natural oils leeching from the wood chips distributed across the site. The puddle was located outside of the pools and on the opposite side of the fence, posing little ecological risk considering the very small amount of fluid present and the uncertainty of the source material responsible for creating the sheen.
- Upon completion of the site visit, the Raleigh Public Utilities and Raleigh PRCR staff present concluded that the observed impacts from the WNI project are within the permitted extent of disturbance. While the small surface puddles that exhibited a surface sheen do not currently represent a significant risk of contamination, Raleigh staff will need to remain vigilant for evidence of possible petrochemical spills as the WNI project progresses. Staff from Raleigh Public Utilities and Raleigh PRCR will continue to work together as the WNI project proceeds in an effort to minimize ecological risks and ensure that the permitted level/extent of disturbance is maintained.

Recommendations from Raleigh PRCR:

- Obtain copies of the impact permits related to the WNI project from Raleigh Public Utilities so that PRCR staff are equipped with all available information in the case that another public response is required. Similarly, Raleigh PRCR requests information related to the wetland mitigation process and approvals obtained by Raleigh Public utilities.
- Raleigh PRCR will coordinate work with Raleigh Public Utilities to reduce negative impacts to the wetland pools, and requests that the draining of the pools (if necessary) in preparation for moving the silt fence should be completed outside of the November – February months when local reptiles and amphibians are utilizing these pools as breeding habitat.
- Raleigh PRCR will remain in communication with Raleigh Public utilities as the WNI project progresses to help anticipate and mitigate potentially negative impacts to the natural resources found onsite, and to offer support in the development of public messaging related to the project.

Photos from Site Visit on January 13th, 2023

Photo 1: Puddle with sheen



Photo 2: Puddle with sheen



Photo 3: Puddle with sheen



Photo 4: Woodchip berm in wetland pools



Photo 5: Woodchip berm in wetland pools



Photo 6: Woodchip berm in wetland pools





3040 NC 42 Hwy West; Clayton, NC 27520
P:919-359-1102 – F:919-585-5570

MEMORANDUM

DATE: February 10, 2023
FROM: Phil May, Carolina Ecosystems, Inc.
TO: Lee Campbell, P.E., Black & Veatch
RE: Anderson Point Park Sewer Construction
West Neuse Interceptor
City of Raleigh

As requested, I have reviewed the January 15, 2023 letter from the Wake Audobon Society and January 19, 2023 notes from the City PRCR visit to the West Neuse Interceptor construction easement within Anderson Point Park. In addition, I visited the area in question to perform a cursory review of the construction easement on February 6, 2023. The following provides a summary of the permitting and agency review process under the Clean Water Act Section and Neuse River Riparian Buffer Rules, as well as a summary of my observations on the site.

WNI Permitting Process

The WNI went through an intensive permitting process with multiple agencies including lead permitting agencies on the federal and state level, the US Army Corps of Engineers (USACE) and NC Division of Water Resources (NCDWR). The following approvals were issued:

- 6/20/21: NCDWR – Water Quality Certification: DWR# 20200845
- 6/20/21: NCDWR – Neuse River Basin Riparian Buffer Authorization DWR# 20200845
- 10/18/2021: USACE – Nationwide Permit 58: Action ID SAW-2020-00564

In addition to these approvals, coordination was performed during the Section 404 CWA permitting process by the USACE with other agencies including the National Marine Fisheries Service (NMFS), NC Natural Heritage Program (NCNHP), NC Wildlife Resources Commission (NCWRC), and US Fish and Wildlife Service (USFWS).

In order to issue a Section 404 Nationwide Permit, the USACE must ensure that they comply with Section 7 of the Endangered Species Act and that the project will not be likely to adversely affect federally protected species. This process was performed, and the USACE requested surveys for federally protected plants, Michaux’s sumac (none were found), and performed coordination with the NMFS to ensure that no effect on sturgeon would result from the project’s crossing of the Neuse River. The NWP 58 was issued after this coordination was completed. In addition, commenting agencies are given the opportunity to review all NWPs, and include the USFWS, NCNHP, and NCWRC. None of the agencies raised concerns during the process about the effects on the natural environment.

The USACE cannot issue a NWP until their review concludes that the project has the least wetland impact practicable considering project constraints. The application must document the avoidance and minimization of wetland impacts, and provide suitable compensatory mitigation for permanent loss of wetlands. All permitting processes were followed and permits issued with avoidance and minimization of impacts considered in the most practicable method.

The floodplain wetland identified within the construction corridor in Anderson Point Park (Jurisdictional Determination ID WAG, NWP ID Site W1) was approved for 0.546 acre of temporary wetland impact, which includes clearing, grubbing, removal of soil to install the interceptor, and backfilling of the trench to pre-construction contours. Avoidance of the impact was not possible due to the presence of the existing sewer line and depth of the proposed interceptor. No compensatory mitigation was required for this specific impact, as the area will be returned to pre-construction grades and allowed to naturally revegetate into a forested wetland again in the future.

Site Review

A brief site review was performed on 2/6/23 to observe the areas in question. Clearing of the construction corridor has been performed and erosion control measures put in place including silt fencing and mulching for stabilization. Some mulch piles are deeper and beyond the silt fence, but (based on submeter GPS location) seem to be within the permitted construction corridor.

Some pools of water did exhibit a sheen as mentioned in the Audobon Society letter. While detailed investigation of every pool was not conducted, several areas were examined. Some sheen exhibited characteristics of biological, rather than petrochemical, origin, as the sheen was able to be “broken” when disturbed and did not reform, while in other areas it did. Therefore, the origin of some of the sheen could be bacteriological activity or sourced from the mulched timber, rather than from construction equipment. No clear evidence of fuel or oil spills from construction equipment was observed. Water color was darker in the wetland in question compared to the adjacent wetland outside the construction corridor, which could be due to a combination of depth (undetermined during the visit) and contribution from the mulch/timbering.

Conclusions

Based on the USFWS’s Information for Planning and Consultation (IPaC) and NCNHP Element Occurrence databases, no known occurrences of federal or state listed species are present in Anderson Point Park except for general, low accuracy occurrence polygons covering much larger areas, a larger mapped polygon of Piedmont bottomland and Piedmont levee forest, and one occurrence of Veined Skullcap, a plant listed as state endangered and located south of the project area and outside the limits of construction. The amphibian species listed in the Audobon Society’s letter are not protected by current regulations and would not have been a concern for the above referenced agencies during permit review.

I understand and appreciate the concern the Society has for the floodplain wetland ecosystems and their contribution to the life cycle of amphibians, among other important functions. However, my professional experience after almost 30 years of field wetland delineation in North

Carolina is that, while these areas may be relatively rare within the public areas of City jurisdiction, they are not uncommon along the floodplain of the Neuse River or in many areas of the state. Also, due to Clean Water Act and Federal Emergency Management Act requirements, floodplain wetlands often receive more protection than many other wetland types that occur outside the floodplain and provide other important functions.

If you have any questions, or need further information please contact me at your earliest convenience at phil.may@carolinaeco.com or (919) 606-1065.



Black & Veatch International Company
175 Regency Woods Place, Suite 200, Cary, NC 27518
P +1 919 462 7423 E campbelldl@bv.com

MEMORANDUM

Raleigh Water
West Neuse Interceptor Improvements

B&V Project No.: 197950
BV File No.: 12.2100
February 16, 2023

Attention: Janeen Goodwin, PE – CIP Manager

Subject: Permitting in Anderson Point Park

Dear Ms. Goodwin:

The intent of this memorandum is to provide information on the permits issued for installation of the West Neuse Interceptor, particularly in Anderson Point Park. The portion of the project in Anderson Point Park required approvals from several regulatory agencies including the City of Raleigh, NCDEQ (Division of Land Resources and Division of Water Resources), and US Army Corps of Engineers. Our environmental subconsultant, Carolina Ecosystems, Inc., provided a summary of the permit approvals by the US Army Corps of Engineers and NCDEQ – Water Resources in a memo dated February 10, 2023 previously provided to you.

For NCDEQ – Land Resources, we applied for and received an erosion and sedimentation control permit. This approval required us to delineate the limits of disturbance and show construction measures to be installed to prevent runoff from carrying sediment to nearby surface waters. This approval includes a stormwater permit, General Permit No. NCG010000, that allows discharge of stormwater runoff to surface waters based on our proposed construction measures to minimize erosion and sedimentation. The contractor is also required to inspect measures after rainfall events and maintain the measures to ensure their integrity to operate as intended. The measures in Anderson Point Park generally consist of silt fence to keep sediment from leaving the work area, matting to stabilize slopes and drainage channels, and a clean water diversion to keep uphill runoff clean and diverted through the construction area. Visits to the site have shown the erosion control measures to be operating as intended, and this will be monitored throughout the life of the project. It should be noted that the stormwater permit requires all construction equipment to be properly operated and maintained to prevent petroleum spills to surface waters as well.

If any additional information is needed regarding the approvals issued for this work, please contact me.

Very truly yours,

Black & Veatch International Company

A handwritten signature in black ink, appearing to read 'D. Lee Campbell, Jr.'.

D. Lee Campbell, Jr., PE
Project Manager

BUILDING A WORLD OF DIFFERENCE®
//////

Weekly Events Digest

Friday, March 10 – Thursday, March 16

City of Raleigh Office of Emergency Management and Special Events
specialevents@raleighnc.gov | 919-996-2200 | raleighnc.gov/special-events-office

Permitted Special Events

[Raleigh St. Patrick's Day Parade](#)

Fayetteville Street District & State Capital District

Saturday, March 11

Event Time: 10:00am - 12:30pm

Associated Road Closures: The following roads will be closed from 8:00am until 1:00pm:

- N. Wilmington Street between Peace Street and E. Lane Street
- Polk Street between Blount Street and Wilmington Street
- E. North Street between Blount Street and Wilmington Street
- W. Morgan Street between Fayetteville Street and Salisbury Street

The following parade route will be closed from 9:50am until 12:00pm; note that all cross-streets one block in each direction will be detoured during the event:

- Start at the intersection of N. Wilmington Street and E. Lane Street
- Head south on Wilmington Street
- Right onto E. Morgan Street
- Left onto Fayetteville Street
- Right onto W. Davie Street
- Left onto S. Salisbury Street
- Finish at Lenoir Street

[Glenwood South St. Patrick's Day Festival](#)

Glenwood Avenue & North Street

Saturday, March 11

Event Time: 12:00pm - 11:00pm

Associated Road Closures: Glenwood Avenue between North Street and Lane Street will be closed from 8:00am on 3-11-23 until 2:00am on 3-12-23. North Street between Glenwood Avenue and the Blue Ridge Realty parking lot entrance will be closed from 6:00am until 11:00pm on 3-11-23.

[Skate Raleigh Pop-Up](#)

Raleigh Union Station Plaza

Thursday, March 16

Event Time: 4:00pm - 8:00pm

Associated Road Closures: No roads will be closed for the event. Union Station Plaza will be used from 3:00pm until 9:00pm.

Other Upcoming Events

[The Soul II Soul Tour with Women's Empowerment Expo](#)

Friday, March 10

PNC Arena

[Rachmaninoff Piano Concerto No. 3 – NC Symphony](#)

Friday, March 10 & Saturday, March 11

Meymandi Concert Hall

[Mozart: Symphony No. 40 – Carolina Ballet](#)

Friday, March 10 – Sunday, March 26

Fletcher Opera Theater

[Geek and Grub Market \(Fantasy Edition\)](#)

Saturday, March 11
Fred Fletcher Park

[Reptile & Amphibian Day](#)

Saturday, March 11
NC Museum of Natural Sciences

[Parks Bond Community Workshop](#)

Saturday, March 11
Method Community Park

[Vegas Golden Knights vs. Carolina Hurricanes](#)

Saturday, March 11
PNC Arena

[Tarboro Street Open House](#)

Saturday, March 11
Tarboro Road Community Center

[Women's History Trolley Tour](#)

Sunday, March 12
Mordecai Historic Park

[Greta Van Fleet](#)

Monday, March 13
PNC Arena

[Spring Break on Hillsborough Street](#)

Monday, March 13 – Wednesday, March 23
Hillsborough Street

[Annual Action Plan Public Meetings](#)

Tuesday, March 14 & Thursday, March 16
Method Road Community Center & Virtual

[Eat Smart, Move More Nutrition Demonstration](#)

Tuesday, March 14
Barwell Road Community Center

[Winnipeg Jets vs. Carolina Hurricanes](#)

Tuesday, March 14
PNC Arena

[Small Business Expo](#)

Thursday, March 16
Southeast Raleigh High School

Public Resources

[Pilot Text Alert Program](#): Sometimes spontaneous events happen downtown and in other areas that could affect local businesses. If you'd like to receive notifications when those events happen, including unpermitted ones, sign up for text alerts.

Weekly Events Digest

Friday, March 10 – Thursday, March 16

City of Raleigh Office of Emergency Management and Special Events
specialevents@raleighnc.gov | 919-996-2200 | raleighnc.gov/special-events-office

[Event Feedback Form](#): Tell us what you think about Raleigh events! We welcome citizen and participant feedback and encourage you to provide comments or concerns about any events regulated by the Office of Emergency Management and Special Events. We will use this helpful information in future planning.

[Road Closure and Road Race Map](#): A resource providing current information on street closures in Raleigh.

[Online Events Calendar](#): View all currently scheduled events that impact city streets, public plazas, and Dorothea Dix Park.