



## IN THIS ISSUE

**Update on Low-Income Household Water Assistance Program (LIHWAP)**

**Sip n' Stroll Downtown, Raleigh's Social District, Expands**

**Wake County Tree Canopy Assessment**

**Lake Wheeler Road Closure – Gipson Play Plaza Construction Project, Dix Park**

**Weekly Digest of Special Events**

## INFORMATION:

### **Update on Low-Income Household Water Assistance Program (LIHWAP)**

*Staff Resource: Gregory Jenkins II, Raleigh Water, 996-3475, [gregory.jenkins@raleighnc.gov](mailto:gregory.jenkins@raleighnc.gov)*

Low Income Household Water Assistance Program (LIHWAP) is a federally funded program that provides emergency assistance to low-income households to prevent disconnection of water services. This new program was created during COVID. Raleigh Water has been working closely with Wake County to qualify account holders and apply the assistance to avoid disconnection of water and wastewater services.

This successful program started in December 2021 and is ending. In the year 2022, we assisted approximately ~1,900 customers for a total of \$1,043,500.00. The program assisted ~3,300 customers for almost \$2,272,000.00 in fiscal year 2023.

The State has issued an additional flat rate supplemental payment of \$90.15 to each customer that received LIHWAP assistance in fiscal year 2023. This final LIHWAP assistance payments will be applied in August and September. The State sent out notices to the qualified households advising customers of this additional assistance.

*(No attachment)*



Sample signage design



Sample window clings (larger and more visible than clings that were previously issued)



**Sample sidewalk decal**

(No attachment)

**Wake County Tree Canopy Assessment**

Staff Resource: Zach Manor, Parks, 996-4868, [zach.minor@raleighnc.gov](mailto:zach.minor@raleighnc.gov)

In 2022 Wake County contracted Davey Resource Group to complete a Land Cover Analysis with Supporting Tree Canopy Assessment. The project encompasses the total 857 square miles of Wake County, including and segmenting the totality of the 12 core municipalities. In 2022 Wake County began a project to complete a Land Cover Analysis with Supporting Tree Canopy Assessment that covers all 857 square miles of Wake County, including the 12 core municipalities including Raleigh. Wake County worked closely with the municipal partners to determine the scope of this project. Each municipality receives its own report and data related to the project that was completed in August of 2023.

The objective of the project was to create a baseline to understand the extent and function of the existing tree canopy coverage, compare current tree canopy to past years (2010-2020), assess the canopy over a range of attributes and geographic boundaries and provide a resource to guide canopy initiatives with a focus on equity for vulnerable communities.

Included with the *Update* packet is a memo that contains background on the project, the expected deliverables, and some next steps timelines.

(Attachments)

**Lake Wheeler Road Closure – Gipson Play Plaza Construction Project, Dix Park**

*Staff Resources: Elizabeth Nooe, Engineering Services, 996-4635, [elizabeth.nooe@raleighnc.gov](mailto:elizabeth.nooe@raleighnc.gov)*

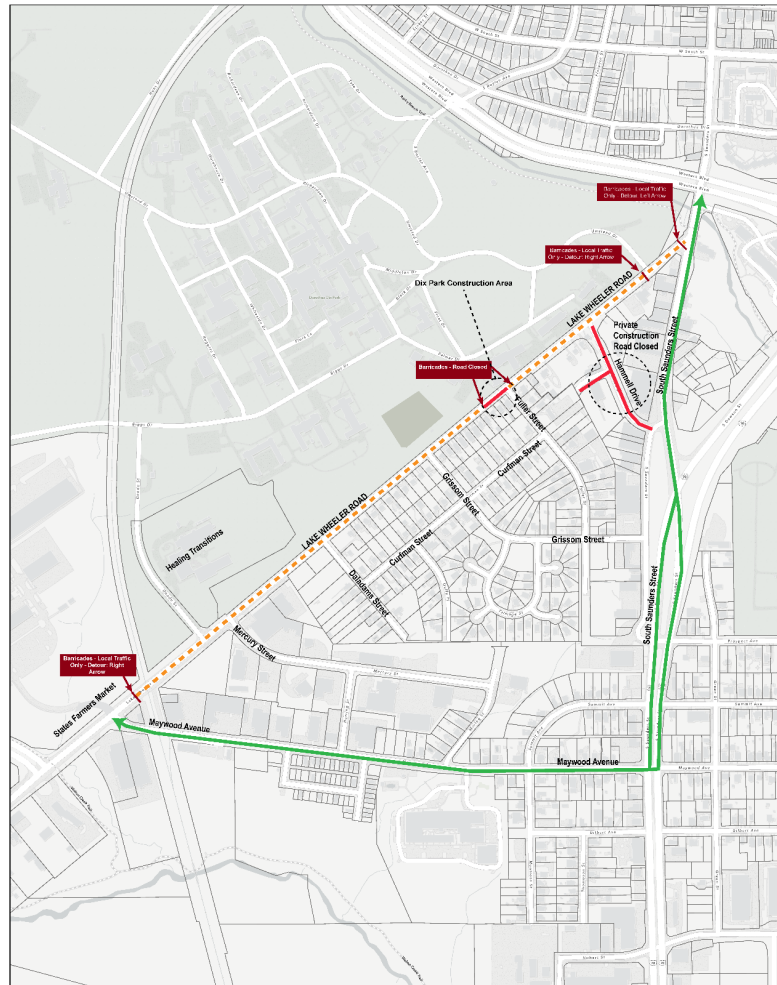
The Gipson Play Plaza continues to advance accordingly to the project schedule. Currently, the construction team is working on completing underground utilities. One of the last critical elements is the completion of underground work, which is the system tie-in for the sewer and water lines. This work will occur in the Right-of-Way (ROW) of Lake Wheeler Road. The CMAR team of Balfour Beatty/Holt Brothers Construction Joint Venture has coordinated with the City of Raleigh for a ROW permit to conduct this work during the weekend of August 25th. To minimize disruptions, the construction will be all day and overnight Friday and Saturday. It is expected that work in the ROW will be completed before the end of Sunday and the road opened for normal traffic by Monday morning. In case of inclement weather, the construction work will likely be rescheduled for the weekend of September 8-10.

The detour path approved by the City will direct traffic to use Maywood Avenue and South Saunders Street. Local traffic will be permitted beyond the barricades to access Fuller Heights neighborhood. However, the road will be completely closed around the intersection of Fuller Street and Lake Wheeler Road. Several residents will not have vehicular access to their properties. Construction Management will be coordinating with the properties that have access issues to ensure that they are accommodated.

In addition to internal notifications of road closures, mailer notifications have been sent out to businesses, property owners, and residents. News Alert has been posted to the home page of the website [LINK](#). Social media posts will be handled by Transportation Department with Parks Recreation and Cultural Resources communication team reposting social items and linking to the news alert. PRCR will also coordinate communication with attendees to Dix Park events over this weekend. The CMAR team and the City's Project Management team will coordinate with Raleigh Police Department for event management and plan to visit residents in person next week to prepare for closure next Friday.

*(No attachment)*

**Lake Wheeler Road Detour Map**  
**August 25, 2023, 7 PM until August 27, 2023, TBD**



**LAKE WHEELER ROAD CLOSURE MAP**  
 Gipson Play Plaza Construction  
 August 25, 2023 7 PM until August 27, 2023

- Closed to All Traffic
- - - Local Traffic Only
- Detour Route
- Barricades



0 200 200 800 ft  
 1 inch equals 200 feet

**Disclaimer**  
 Maps make every effort to provide and publish the most current and accurate information possible. However, the maps are produced for information purposes and are NOT surveys. No warranties, expressed or implied, are provided for the data herein, its use or its interpretation.

**Weekly Digest of Special Events**

Staff Resource: Sarah Heinsohn, Office of Special Events, 996-2200, [sarah.heinsohn@raleighnc.gov](mailto:sarah.heinsohn@raleighnc.gov)

Included with the *Update* materials is the special events digest for the upcoming week.

(Attachment)

**Council Member Follow Up Items**

No Items this Issue



To	Tansy Hayward Deputy City Manager
Thru	Stephen Bentley PRCR Director
From	Zach Manor Urban Forester
Department	Parks, Recreation and Cultural Resources Department
Date	August 8/15/2023
Subject	Wake County Tree Canopy Assessment Completion and Report Background

Wake County has experienced high population and job growth over the last decade, with significant ongoing and anticipated development occurring in the next five years. This growth has underscored the necessity of intentionally prioritizing tree canopy management and understanding the associated impacts on the environment to ensure sustainability and livability in Wake County communities.

In 2022 Wake County contracted Davey Resource Group to complete a Land Cover Analysis with Supporting Tree Canopy Assessment. The project encompasses the total 857 square miles of Wake County, including and segmenting the totality of the 12 core municipalities.

There were four objectives laid out to guide the project:

- Create a countywide baseline to understand the extent and function of the existing canopy coverage.
- Compare the current tree canopy to past years and highlight areas of loss or gain over time.
- Conduct assessments across a range of attributes, including specific geographic boundaries.
- Produce the resources needed to guide future canopy initiatives, with a focus on equity for vulnerable communities.

As a key municipality in Wake County, City of Raleigh staff have been part of the canopy assessment project from the beginning to act as subject matter experts and provide input and review throughout the process. The Raleigh team is made up of members of the Office of Sustainability, Planning and Development, Engineering Services and Parks Recreation and Cultural Resources departments as members of the Strategic Plan Growth and Natural Resources 1.1 . initiative team. Each municipality received its own specific report and was provided the Countywide data from the project as part of the deliverables in early August.

The expectation is that Wake County will be making the report available to the public on August 25<sup>th</sup> via their website. To align with this release, staff are working with City Communications on a webpage that includes the Raleigh specific report to go live on the August 25<sup>th</sup> as well. Outreach like social media and web updates will begin in early September. The City's initial webpage will include the following:

- Raleigh specific canopy assessment report.
- Link to the County report.
- Project background and scope.
- Existing City projects, initiatives or regulations related to tree preservation and planting including weblinks.
- Statement related to the City's analysis of the report and associated data and that more information is to come around putting it to use.

City staff are working on strategies for the use and sharing of the data. Additionally, staff will be looking at how this data will shape our urban tree canopy policies in the coming years. The next steps are for staff from multiple departments to develop a memorandum outlining the strategies that are currently underway, potential new initiatives and the resources needed to implement them. Staff will work with the City Manager's Office on scheduling a City Council update before the end of the calendar year.



# Weekly Events Digest

Friday, August 18 – Thursday, August 24

City of Raleigh Office of Special Events  
[specialevents@raleighnc.gov](mailto:specialevents@raleighnc.gov) | 919-996-2200 | [raleighnc.gov/special-events-office](http://raleighnc.gov/special-events-office)

---

## Permitted Special Events

### [CaribMask Caribbean Festival & Parade](#)

Fayetteville Street District

Saturday, August 19

Event Time: 12:00pm - 9:00pm

Associated Road Closures: Fayetteville Street between Martin Street and the south end of City Plaza, and Davie Street between Salisbury Street and Wilmington Street will be closed from 6:00am until 11:59pm.

The following roads will be closed from 10:00am until 2:00pm for parade staging:

- Salisbury Street between W. Edenton Street and Hillsborough Street
- Hillsborough Street between McDowell Street and Salisbury Street
- Morgan Street between McDowell Street and Salisbury Street

The following roads will be closed from 12:00pm until 2:00pm for the parade route; note that all roads one block in each direction will be detoured:

- Start at intersection of Hillsborough Street and Salisbury Street heading south
- Left onto Morgan Street
- Right onto Fayetteville Street
- Right onto W. Martin Street
- Left onto S. Salisbury Street to finish

### [Mud Day](#)

Walnut Creek Wetland Park & Peterson Street

Saturday, August 19

Event Time: 10:00am - 1:00pm

Associated Road Closures: Peterson Street between S. State Street and the entrance to Carnage Middle School will be closed from 8:00am until 3:00pm.

### [Kirby Derby](#)

Dorothea Dix Park, Richardson Drive Loop

Saturday, August 19

Event Time: 3:00pm - 9:00pm

Associated Road Closures: Richardson Drive between Tate Drive and Stancil Drive, and Tate Drive between the Richardson Drive loop will be closed from 9:00am until 10:00pm.

### [UNC Health Sprint Triathlon](#)

Wakefield

Sunday, August 20

Event Time: 7:00am - 11:30am

Associated Road Closures: Roads will be used for the bike and run routes from 7:00am until 11:30am. View [course maps](#) for more details.

### [Black Flea Market](#)

Raleigh Union Station Plaza

Sunday, August 20

Event Time: 1:00pm - 5:00pm

Associated Road Closures: No roads will be closed for the event. Union Station Plaza will be used from 12:00pm until 6:00pm every Sunday through 10-29-23.

### [ACORNS Connects Downtown District](#)

Martin Marietta Center for the Performing Arts Parking Lots

Thursday, August 24

Event Time: 9:00am - 1:00pm

Associated Road Closures: No roads will be closed for the event. The performing arts center parking lots at Fayetteville Street/Lenoir Street will be used from 7:00am until 4:00pm.

## Other Upcoming Events

### [That's My Jam!](#)

Friday, August 18

Fletcher Opera Theater

### [Food History Trolley Tour](#)

Saturday, August 19

Mordecai Historic Park

### [Back to School Jamboree at the Park](#)

Saturday, August 19

John Chavis Memorial Park

### [Pentatonix](#)

Saturday, August 19

Coastal Credit Union Music Park at Walnut Creek

### [Summer Concert Series](#)

Sunday, August 20

Pullen Park

### [Tessellate: Light & Shadow Installation](#)

Ongoing through Monday, August 28

Dorothea Dix Park, Flowers Field

## Public Resources

[Pilot Text Alert Program](#): Sometimes spontaneous events happen downtown and in other areas that could affect local businesses. If you'd like to receive notifications when those events happen, including unpermitted ones, sign up for text alerts.

[Event Feedback Form](#): Tell us what you think about Raleigh events! We welcome citizen and participant feedback and encourage you to provide comments or concerns about any events regulated by the Office of Special Events. We will use this helpful information in future planning.

[Road Closure and Road Race Map](#): A resource providing current information on street closures in Raleigh.

[Online Events Calendar](#): View all currently scheduled events that impact city streets, public plazas, and Dorothea Dix Park.