



Administrative Approval Action

Case File / Name: ASR-0089-2024

DSLCL - GoRaleigh Operations and Maintenance Facility (Poole Rd) Expansion

City of Raleigh
Development Services Department
One Exchange Plaza
Raleigh, NC 27602
(919) 996-2492
currentplanning@raleighnc.gov
www.raleighnc.gov

LOCATION: The site 22.87 acre site is located at 4104 Poole Road, PIN # 1723847317, and is zoned IX-3. The site is located on the southwest corner of Poole Road and Bus Way. The site is adjacent to Residential 6 (R-6) properties to the south.

REQUEST: Expansion of GoRaleigh's Poole Road Operations & Maintenance Facility to include an additional 11,241 sf of administrative office space and an additional 8,412 sf of maintenance space including 3 maintenance bays.

**DESIGN
ADJUSTMENT(S)/
ALTERNATES, ETC:** N/A

FINDINGS: City Administration finds that this request, with the below conditions of approval being met, conforms to the Unified Development Ordinance. This approval is based on a preliminary plan dated January 23, 2025 by City of Raleigh.

CONDITIONS OF APPROVAL and NEXT STEPS:

This document must be applied to the second sheet of all future submittals except for final plats. This is a preliminary plan and as such no permits have been issued with this approval. To obtain permits and/or completion of the project, the following steps are required:

☒ **SITE PERMITTING REVIEW** - For land disturbance of 12,000 square feet or greater, public or private infrastructure, shared stormwater devices, etc. Site Permitting Review may be submitted upon receipt of this signed approval document.

The following items are required prior to approval of Site Permitting Review plans:

Stormwater

1. A nitrogen offset payment must be made to a qualifying mitigation bank (UDO 9.2.2.B).
2. A stormwater control plan with a stormwater operations and maintenance manual and budget shall be approved (UDO 9.2).

The following are required prior to issuance of building occupancy permit:

Stormwater

1. As-built impervious survey is accepted by the Engineering Services Department (UDO 9.2).
2. As-built drawings and associated forms for all Stormwater devices are accepted by the Engineering Services Department (UDO 9.2.2.D.3).

EXPIRATION DATES: The expiration provisions of UDO Section 10.2.8 E, including the ability to request extensions in the expiration date, apply to this site plan. If significant construction has not taken place on a project after administrative site review approval, that approval may expire and be declared void, requiring re-approval before



Administrative Approval Action

Case File / Name: ASR-0089-2024

DSLC - GoRaleigh Operations and Maintenance Facility (Poole Rd) Expansion

City of Raleigh
Development Services Department
One Exchange Plaza
Raleigh, NC 27602
(919) 996-2492
currentplanning@raleighnc.gov
www.raleighnc.gov

permits may be issued. To avoid allowing this plan approval to expire the following must take place by the following dates:


3-Year Expiration Date: May 8, 2028

Obtain a valid building permit for the total area of the project, or a phase of the project.

4-Year Completion Date:

Within four years after issuance of the first building permit for the site plan, the construction of the entire site plan must be completed unless an applicant has been granted vested rights. Failure to complete construction within this specified time frame shall automatically void the approved site plan for which no building permits have been issued.

I hereby certify this administrative decision.

Signed: *Keegan McDonald*  Digitally signed by Keegan.McDonald@raleighnc.gov
Reason: I am approving this document
Date: 2025.05.08 14:27:00-04'00' Date: 05/08/2025
Development Services Dir/Designee
Staff Coordinator: Jeff Caines

2. THE CONTRACTOR SHALL CONDUCT ALL WORK IN A SAFE MANNER AND WITH A MINIMUM AMOUNT OF INCONVENIENCE TO TRAFFIC.
3. THE CONTRACTOR SHALL BE RESPONSIBLE FOR ALL TRAFFIC CONTROL, AND SHALL ADHERE TO THE PROVISIONS OF THE MUTCD (MOST CURRENT EDITION).
4. PRIOR TO START OF WORK, A PILE CONSTRUCTION MEETING MUST BE SET UP WITH THE CONTRACTOR AND THE CITY OF BALTIMORE TRAFFIC ENGINEER. THE MEETING SHALL DISCUSS CONTRACTOR PROPOSED TRAFFIC CONTROL MEASURES, 900-2420 TO SET UP THE MEETING.
5. THE CONTRACTOR SHALL OBTAIN A "RIGHT-OF-WAY" OBSTRUCTION PERMIT FOR ANY WORKS 24 HOURS TO SET UP THE TEMPORARY CLOSURE OF A STREET, TRAVEL LANE, PARKING SPACE OR SIDEWALK FROM RIGHT-OF-WAY CLOSURE FOR AT LEAST 48 HOURS IN ADVANCE.
6. A TEMPORARY STREET CLOSURE REQUEST MUST BE SUBMITTED AT LEAST A MINIMUM OF TWO WEEKS PRIOR TO THE START OF WORK. SEE "RIGHT-OF-WAY REQUEST" ON WWW.BALTIMORE.GOV. SEND THE RIGHT-OF-WAY OBSTRUCTION PERMIT REQUEST TO permits@cityofbaltimore.org.
7. THE CONTRACTOR SHALL HAVE A COMPLETE SET OF CONSTRUCTION DOCUMENTS AS WELL AS ALL PERMITS, APPROVALS AND EASEMENTS ON THE JOB SITE AT ALL TIMES.
8. THE CONTRACTOR SHALL REPAIR ALL DAMAGED DRIVEWAYS, DRIVEWAY PITS, CURB AND GUTTER, SIDEWALKS AND STREETS TO ORIGINAL CONDITION.
9. SIDEWALKS MUST APPEAR TO PERSONS WHO ARE USUALLY IMPAIRED AND PEOPLE WITH MOBILITY DISABILITIES, EXCEEDING PEDESTRIAN ROUTES AND ALTERNATE PEDESTRIAN ROUTES, DURING CONSTRUCTION, WILL BE REQUIRED TO BE COMPLIANT WITH THE AMERICAN WITH DISABILITIES ACT (ADA) (1990) AND ADA STANDARDS FOR ACCESSIBLE DESIGN AND THE MANUAL ON UNIFORM TRAFFIC CONTROL DEVICES (MUTCD).

1. ALL PAYMENT MARKINGS SHOWN IN THESE PLANS FOR CITY OF RALEIGH MAINTAINED STREETS ARE SUBJECT TO FINAL APPROVAL FROM PUBLIC WORKS TRANSPORTATION OPERATIONS DIVISION. CONTRACTOR SHALL CONTACT TRANSPORTATION OPERATIONS AT 919-906-3030 FOR COORDINATION AND FINAL APPROVAL PRIOR TO PLACEMENT OF ANY PAYMENT MARKINGS. MARKINGS WITHIN NCDOT RIGHT-OF-WAYS SHALL BE IN COMPLIANCE WITH NCDOT STANDARDS AND SPECIFICATIONS.
2. ALL SIGNS & PAYMENT MARKINGS ASSOCIATED WITH THE PUBLIC STREET SYSTEM WILL REQUIRE APPROVAL BY CITY COUNCIL TO BE ORDINANCE FOR ENFORCEMENT.
3. ALL PAYMENT MARKINGS SHALL BE PLACED PER THE NCDOT DIVISION 12 STANDARD DETAILS. BICYCLE LANE MARKINGS SHALL BE PLACED PER CITY OF RALEIGH STANDARD BICYCLE FACILITIES DETAILS.

ALL MATERIALS & CONSTRUCTION METHODS SHALL BE IN ACCORDANCE WITH CITY OF RALEIGH DESIGN STANDARDS, DETAILS & SPECIFICATIONS (PERFORMANCE: CORPUS HANDBOOK, CURRENT EDITION)

2. UTILITY SEPARATION REQUIREMENTS:

- A) A DISTANCE OF 30' MINIMUM SHALL BE MAINTAINED BETWEEN SANITARY SEWER & ANY PRIVATE OR PUBLIC WATER SUPPLY SOURCE OR CONDUIT. IF THE UTILITY IS LOCATED AT A SOURCE OF DRINKING WATER, IF APPROPRIATE, LATERAL SEPARATION SHALL BE MAINTAINED. FEROUS SANITARY SEWER PIPE SHALL BE SPECIFIED & INSTALLED TO WATERTIGHT SPECIFICATIONS. THE MINIMUM SEPARATION SHALL NOT BE LESS THAN 2' FROM A PRIVATE WELL OR OF 5' FROM A PUBLIC WELL.
- B) WHEN INSTALLING WATER, FEROUS SANITARY SEWERS, THE HORIZONTAL SEPARATION BETWEEN UTILITIES SHALL BE 10'. IF THE SEPARATION CANNOT BE MAINTAINED DUE TO EXISTING CONDITIONS, THE VARIATION ALLOWED IS THE WATER MAIN IN THE SAME TRENCH WITH THE SANITARY SEWER. THE DISTANCE FROM THE TOP OF THE SANITARY SEWER TO THE TOP OF THE WATER MAIN SHALL BE APPROVED BY THE PUBLIC UTILITIES DIRECTOR. ALL DISTANCES ARE MEASURED FROM OUTSIDE DIAMETER TO OUTSIDE DIAMETER.
- C) WHERE IT IS IMPOSSIBLE TO OBTAIN PROPER SEPARATION, OR ANYTIME A SANITARY SEWER PASSES OVER A WATERMAIN, DRAINAGE MATERIALS OR STEEL ENCASEMENT EXTENDED 10' ON EACH SIDE OF CROSSING MUST BE SPECIFIED & INSTALLED TO MEET THE FOLLOWING SPECIFICATIONS:
 - 1. MINIMUM HORIZONTAL SEPARATION IS REQUIRED BETWEEN ALL SANITARY SEWER & STORM SEWER FACILITIES, UNLESS DIAMETER IS SPECIFIED FOR SANITARY SEWER.
 - 2. MAINTAIN 18" MIN. VERTICAL SEPARATION AT ALL WATERMAIN, 8" RPT STORM DRAIN CROSSINGS, MAINTAIN 18" MIN. VERTICAL SEPARATION AT ALL SANITARY SEWER & RPT STORM DRAIN CROSSINGS, WHERE ADEQUATE SEPARATIONS CANNOT BE ACHIEVED, SPECIFY 8" OF MATERIALS & A CONCRETE CASTING HAVING 8" MIN. CLEARANCE (PER CORPUS DETAILS W-41 & 41-6).
- F) ALL OTHER UNDERGROUND UTILITIES SHALL CROSS WATER & SEWER FACILITIES WITH 18" MIN. VERTICAL SEPARATION REQUIRED.

ANY NECESSARY FIELD REVISIONS ARE SUBJECT TO REVIEW & APPROVAL OF AN AMENDED PLAN (COP/PROFILE) BY THE CITY OF RALEIGH PUBLIC UTILITIES DEPARTMENT FOR CONSTRUCTION.

4. DEVELOPER SHALL PROVIDE 30 DAYS ADVANCE WRITTEN NOTICE TO OWNER FOR ANY WORK REQUIRED INCLUDING AN EXISTING UTILITY CROSSING OR REMOVAL.

5. CONTRACTOR SHALL MAINTAIN CONTINUOUS WATER & SEWER SERVICE TO EXISTING RESIDENCES & BUSINESSES THROUGHOUT CONSTRUCTION OF PROJECT. ANY TEMPORARY SERVICE INTERRUPTIONS SHALL BE PRECEDED BY A 2-4 HOUR ADVANCE NOTICE TO THE CITY OF RALEIGH PUBLIC UTILITIES DEPARTMENT.

6. SEWER BYPASS PUMPING – A BYPASS PLAN ISSUED BY AN CP PROFESSIONAL ENGINEER SHALL BE PROVIDED TO ALIGN WATER MAIN PRIOR TO PUMPING OPERATIONS FOR APPROVAL. OF THE OPERATIONS AND EQUIPMENT SHALL COMPLY WITH THE CITY OF RALEIGH PUBLIC UTILITIES DEPARTMENT.

7. 10' MINIMUM COVER IS REQUIRED ON WATER MAINS & SEWER FORCE MAINS. 40' MINIMUM COVER IS REQUIRED ON ALL REUSE MAINS.

8. IT IS THE DEVELOPER'S RESPONSIBILITY TO ABANDON OR REMOVE EXISTING WATER & SEWER SERVICES NOT BEING REQUIRED IN REDEVELOPMENT OF A SITE UNLESS OTHERWISE DIRECTED BY THE CITY OF RALEIGH PUBLIC UTILITIES DEPARTMENT. THIS INCLUDES THE PROGRAM CLOSURE OF 14" MAJOR WATER MAINS & 18" MAJOR SEWER MAINS. THE CITY OF RALEIGH REQUIRE

9. INSTALL 18" COPPER" WATER SERVICES WITH METERS LOCATED AT ROW OR WITHIN A 2'X2' WATERLINE ENCASEMENT IMMEDIATELY ADJACENT. NOTICE: IT IS THE APPLICANT'S RESPONSIBILITY TO PROPERLY SIZE THE WATER SERVICE FOR EACH CONNECTION TO ACCORDANCE WITH THE CITY OF RALEIGH DESIGN STANDARDS.

10. INSTALL 4" PVC" SEWER SERVICES @ 10% MINIMUM GRADE WITH CLEANOUTS LOCATED AT ROW OR EASEMENT LINE. A SPACED EVERY 75' LINE FEET MAXIMUM.

11. PRESSURE DRINKING LINES ARE REQUIRED ON ALL WATER SERVICES EXCEEDING 80" PVC. BACKFLOW VALVES ARE REQUIRED ON ALL PRESSURE WATER SERVICES HAVING DRINKING GRANTS LOWER THAN 17' ABOVE THE MEET UPSTREAM MAINLINE.

12. ALL ENVIRONMENTAL PERMITS APPLICABLE TO THE PROJECT MUST BE OBTAINED FROM NCDOQ, USACE, OR FEMA FOR ANY RIPARIAN BUFFER, WETLAND A/R FLOODPLAIN IMPACTS (RESPECTIVELY) PRIOR TO CONSTRUCTION.

13. NCDOJ /RAILROAD INCORPORATION AGREEMENTS ARE REQUIRED FOR ANY UTILITY WORK (INCLUDING MAIN EXTENSIONS & SERVICE TAPS) WITHIN STATE OR RAILROAD ROW PRIOR TO CONSTRUCTION.

14. GREATEST INTERSECTION 7.06 WATER SEPARATION USING CALCULATIONS & INSTALLATION SPECIFICATIONS SHALL BE APPROVED BY THE CITY OF RALEIGH PUBLIC UTILITIES DEPARTMENT. FOR ASSISTANCE OF A U.C. AND/OR RAILROAD PROJECT, CONTACT (319) 966-8326 OR FD@RAILBAGGIE.COM FOR MORE INFORMATION.

15. CROSS CONNECTION CONTROL PROTECTION DEVICES ARE REQUIRED BASED ON THE DEGREE OF HEALTH HAZARD INVOLVED AS WELL AS THE TYPE OF CROSS CONNECTION. THE CITY OF RALEIGH PUBLIC UTILITIES DEPARTMENT SHALL BE NOTIFIED.

16. THE DEVICES SHALL MEET THE AMERICAN SOCIETY OF SANITARY ENGINEERING (ASSE) STANDARDS AND BE ON THE UNIVERSITY OF SOUTHERN CALIFORNIA APPROVAL LIST.

17. THE DEVICE AND INSTALLATION SHALL MEET THE GUIDELINES OF APPENDIX A – GUIDELINES AND REQUIREMENTS FOR THE CROSS CONNECTION PROGRAM IN RALEIGH.

18. THE DEVICES SHALL BE INSTALLED AND TESTED (BOTH INITIAL AND PERIODIC TESTING THEREAFTER) IN ACCORDANCE WITH THE MANUFACTURER'S RECOMMENDATIONS OR THE LOCAL CROSS CONNECTION CONTROL PROGRAM, WHICHEVER IS MORE STRINGENT. CROSS CONNECTION CONTROL DEVICES SHALL BE MAINTAINED AND REPAIRED AS NEEDED.

19. NOTICE FOR PROJECTS THAT INVOLVE AN OVERSIZED MAIN OR URBAN MAIN REPLACEMENT, ANY CITY-OWNERSHIP INVESTMENT GREATER THAN \$250,000 MUST INCLUDE THE PUBLIC BIDDING PROCESS.

- ALL WATER MAINS, SERVICES AND FIRE SERVICES GREATER THAN 12" DIAMETER ARE TO BE DUCTILE IRON PIP. 8" & SMALLER DOMESTIC MAINS MAY BE EITHER C-90 DUCTILE (WITHOUT FITTINGS) TO THE WATER METER, PRIVATE WATER SYSTEMS MAY BE EITHER C-90 PIP, APPROVED BACKFLOW PREVENTOR AS DEFINED IN THE LATEST EDITION OF THE PUBLIC UTILITIES HANDBOOK AND/OR UNFED DEVELOPED AGENCY (UDC).
- ALL SEWER MAINS SHALL BE EITHER PVC OR DUCTILE IRON PIPE AS SHOWN ON THE PLANS. ALL PIPE MATERIAL SHALL MEET CITY OF BALTIMORE SPECIFICATIONS.
- ALL FIRE HYDRANTS ALONG PUBLIC UG LINES SHALL HAVE A 5"WSJ OF CITY OF BALTIMORE WATERLINE EASEMENT INTO ADJACENT PROPERTY.
- ALL SANITARY SEWER INTERCEPT LINES (12" & LARGER), AS WELL AS MANHOLES AND FITTINGS ASSOCIATED WITH THE INTERCEPTOR LINE, SHALL BE INTERNALLY LINER WITH PROTECTIO 403 OR APPROVED EQUAL TO PREVENT HYDROGEN SULFIDE CORROSION. SEE THE CURRENT CITY OF BALTIMORE PUBLIC UTILITIES DEPARTMENT HANDBOOK FOR APPROVED COATINGS AND APPLICATION METHODS.
- IN ACCORDANCE WITH GENERAL SPECIFICATIONS 87-21310, ALL UNDERGROUND UTILITIES INSTALLED AFTER OCTOBER 1, 2014 SHALL BE EARTHQUAKE RESISTANT. CONTRACTOR SHALL COORDINATE DIRECTLY WITH THE CITY OF BALTIMORE PUBLIC UTILITIES DEPARTMENT FOR DETAILS AND SPECIFICATIONS FOR MEETING THESE REQUIREMENTS.
- EXISTING UTILITIES SHOWN ARE BASED ON FIELD SURVEYS AND THE BEST AVAILABLE RECORD DRAWINGS. THE CONTRACTOR SHALL EXERCISE PRECAUTIONS PRIOR TO BEGINNING CONSTRUCTION. ANY DISCREPANCIES BETWEEN ACTUAL FIELD CONDITIONS AND THE PLANS SHALL BE REPORTED TO THE ENGINEER IMMEDIATELY.
- ALL WATER AND SEWER MAINS WITHIN PUBLIC EASEMENTS OR RIGHTS-OF-WAY ARE TO BE OWNED, OPERATED, AND MAINTAINED BY THE CITY OF BALTIMORE.
- ALL WATER AND SEWER MAINS NOT WITHIN PUBLIC EASEMENTS OR RIGHTS-OF-WAY ARE TO BE PRIVATELY OWNED, OPERATED, AND MAINTAINED BY THE PROPERTY OWNER.
- ALL UTILITY SLEEVES SHALL BE SCHEDULE 40 PVC AND INSTALLED WITH 2" MINIMUM COVERS. BOTH ENDS SHALL BE CAPPED AND MARKED.
- VIDEO SURVEYING OF ALL SANITARY SEWER MAINS AND LATERALS IS REQUIRED PRIOR TO USE.

1. ALL DIMENSIONS AND GRADES SHOWN ON THE PLANS SHALL BE FIELD VERIFIED BY THE CONTRACTOR PRIOR TO CONSTRUCTION. CONTRACTOR SHALL NOTIFY THE ENGINEER IF ANY DISCREPANCIES EXIST PRIOR TO PROCEEDING WITH CONSTRUCTION, FOR THE ENGINEER TO CORRECT OR WAIVE. ANY DISCREPANCIES NOT CORRECTED OR WAIVED PRIOR TO CONSTRUCTION SHALL BE DONE TO DIMENSIONS ON GRADES SHOWN INCORRECTLY ON THESE PLANS IF SUCH INFORMATION HAS NOT BEEN GIVEN.
2. OCCUPANCIAL SAFETY AND HEALTH ADMINISTRATION (OSHA) STANDARDS FOR EXCAVATIONS: FINAL RULE 29CFR PART 1256, 1257, 1258, 1259, 1260, 1261, 1262, 1263, 1264, 1265, 1266, 1267, 1268, 1269, 1270, 1271, 1272, 1273, 1274, 1275, 1276, 1277, 1278, 1279, 1280, 1281, 1282, 1283, 1284, 1285, 1286, 1287, 1288, 1289, 1290, 1291, 1292, 1293, 1294, 1295, 1296, 1297, 1298, 1299, 1300, 1301, 1302, 1303, 1304, 1305, 1306, 1307, 1308, 1309, 1310, 1311, 1312, 1313, 1314, 1315, 1316, 1317, 1318, 1319, 1320, 1321, 1322, 1323, 1324, 1325, 1326, 1327, 1328, 1329, 1330, 1331, 1332, 1333, 1334, 1335, 1336, 1337, 1338, 1339, 1340, 1341, 1342, 1343, 1344, 1345, 1346, 1347, 1348, 1349, 1350, 1351, 1352, 1353, 1354, 1355, 1356, 1357, 1358, 1359, 1360, 1361, 1362, 1363, 1364, 1365, 1366, 1367, 1368, 1369, 1370, 1371, 1372, 1373, 1374, 1375, 1376, 1377, 1378, 1379, 1380, 1381, 1382, 1383, 1384, 1385, 1386, 1387, 1388, 1389, 1390, 1391, 1392, 1393, 1394, 1395, 1396, 1397, 1398, 1399, 1400, 1401, 1402, 1403, 1404, 1405, 1406, 1407, 1408, 1409, 1410, 1411, 1412, 1413, 1414, 1415, 1416, 1417, 1418, 1419, 1420, 1421, 1422, 1423, 1424, 1425, 1426, 1427, 1428, 1429, 1430, 1431, 1432, 1433, 1434, 1435, 1436, 1437, 1438, 1439, 1440, 1441, 1442, 1443, 1444, 1445, 1446, 1447, 1448, 1449, 1450, 1451, 1452, 1453, 1454, 1455, 1456, 1457, 1458, 1459, 1460, 1461, 1462, 1463, 1464, 1465, 1466, 1467, 1468, 1469, 1470, 1471, 1472, 1473, 1474, 1475, 1476, 1477, 1478, 1479, 1480, 1481, 1482, 1483, 1484, 1485, 1486, 1487, 1488, 1489, 1490, 1491, 1492, 1493, 1494, 1495, 1496, 1497, 1498, 1499, 1500, 1501, 1502, 1503, 1504, 1505, 1506, 1507, 1508, 1509, 1510, 1511, 1512, 1513, 1514, 1515, 1516, 1517, 1518, 1519, 1520, 1521, 1522, 1523, 1524, 1525, 1526, 1527, 1528, 1529, 1530, 1531, 1532, 1533, 1534, 1535, 1536, 1537, 1538, 1539, 1540, 1541, 1542, 1543, 1544, 1545, 1546, 1547, 1548, 1549, 1550, 1551, 1552, 1553, 1554, 1555, 1556, 1557, 1558, 1559, 1560, 1561, 1562, 1563, 1564, 1565, 1566, 1567, 1568, 1569, 1570, 1571, 1572, 1573, 1574, 1575, 1576, 1577, 1578, 1579, 1580, 1581, 1582, 1583, 1584, 1585, 1586, 1587, 1588, 1589, 1590, 1591, 1592, 1593, 1594, 1595, 1596, 1597, 1598, 1599, 1600, 1601, 1602, 1603, 1604, 1605, 1606, 1607, 1608, 1609, 1610, 1611, 1612, 1613, 1614, 1615, 1616, 1617, 1618, 1619, 1620, 1621, 1622, 1623, 1624, 1625, 1626, 1627, 1628, 1629, 1630, 1631, 1632, 1633, 1634, 1635, 1636, 1637, 1638, 1639, 1640, 1641, 1642, 1643, 1644, 1645, 1646, 1647, 1648, 1649, 1650, 1651, 1652, 1653, 1654, 1655, 1656, 1657, 1658, 1659, 1660, 1661, 1662, 1663, 1664, 1665, 1666, 1667, 1668, 1669, 1670, 1671, 1672, 1673, 1674, 1675, 1676, 1677, 1678, 1679, 1680, 1681, 1682, 1683, 1684, 1685, 1686, 1687, 1688, 1689, 1690, 1691, 1692, 1693, 1694, 1695, 1696, 1697, 1698, 1699, 1700, 1701, 1702, 1703, 1704, 1705, 1706, 1707, 1708, 1709, 1710, 1711, 1712, 1713, 1714, 1715, 1716, 1717, 1718, 1719, 1720, 1721, 1722, 1723, 1724, 1725, 1726, 1727, 1728, 1729, 1730, 1731, 1732, 1733, 1734, 1735, 1736, 1737, 1738, 1739, 1740, 1741, 1742, 1743, 1744, 1745, 1746, 1747, 1748, 1749, 1750, 1751, 1752, 1753, 1754, 1755, 1756, 1757, 1758, 1759, 1760, 1761, 1762, 1763, 1764, 1765, 1766, 1767, 1768, 1769, 1770, 1771, 1772, 1773, 1774, 1775, 1776, 1777, 1778, 1779, 1780, 1781, 1782, 1783, 1784, 1785, 1786, 1787, 1788, 1789, 1790, 1791, 1792, 1793, 1794, 1795, 1796, 1797, 1798, 1799, 1800, 1801, 1802, 1803, 1804, 1805, 1806, 1807, 1808, 1809, 1810, 1811, 1812, 1813, 1814, 1815, 1816, 1817, 1818, 1819, 1820, 1821, 1822, 1823, 1824, 1825, 1826, 1827, 1828, 1829, 1830, 1831, 1832, 1833, 1834, 1835, 1836, 1837, 1838, 1839, 1840, 1841, 1842, 1843, 1844, 1845, 1846, 1847, 1848, 1849, 1850, 1851, 1852, 1853, 1854, 1855, 1856, 1857, 1858, 1859, 1860, 1861, 1862, 1863, 1864, 1865, 1866, 1867, 1868, 1869, 1870, 1871, 1872, 1873, 1874, 1875, 1876, 1877, 1878, 1879, 1880, 1881, 1882, 1883, 1884, 1885, 1886, 1887, 1888, 1889, 1890, 1891, 1892, 1893, 1894, 1895, 1896, 1897, 1898, 1899, 1900, 1901, 1902, 1903, 1904, 1905, 1906, 1907, 1908, 1909, 1910, 1911,

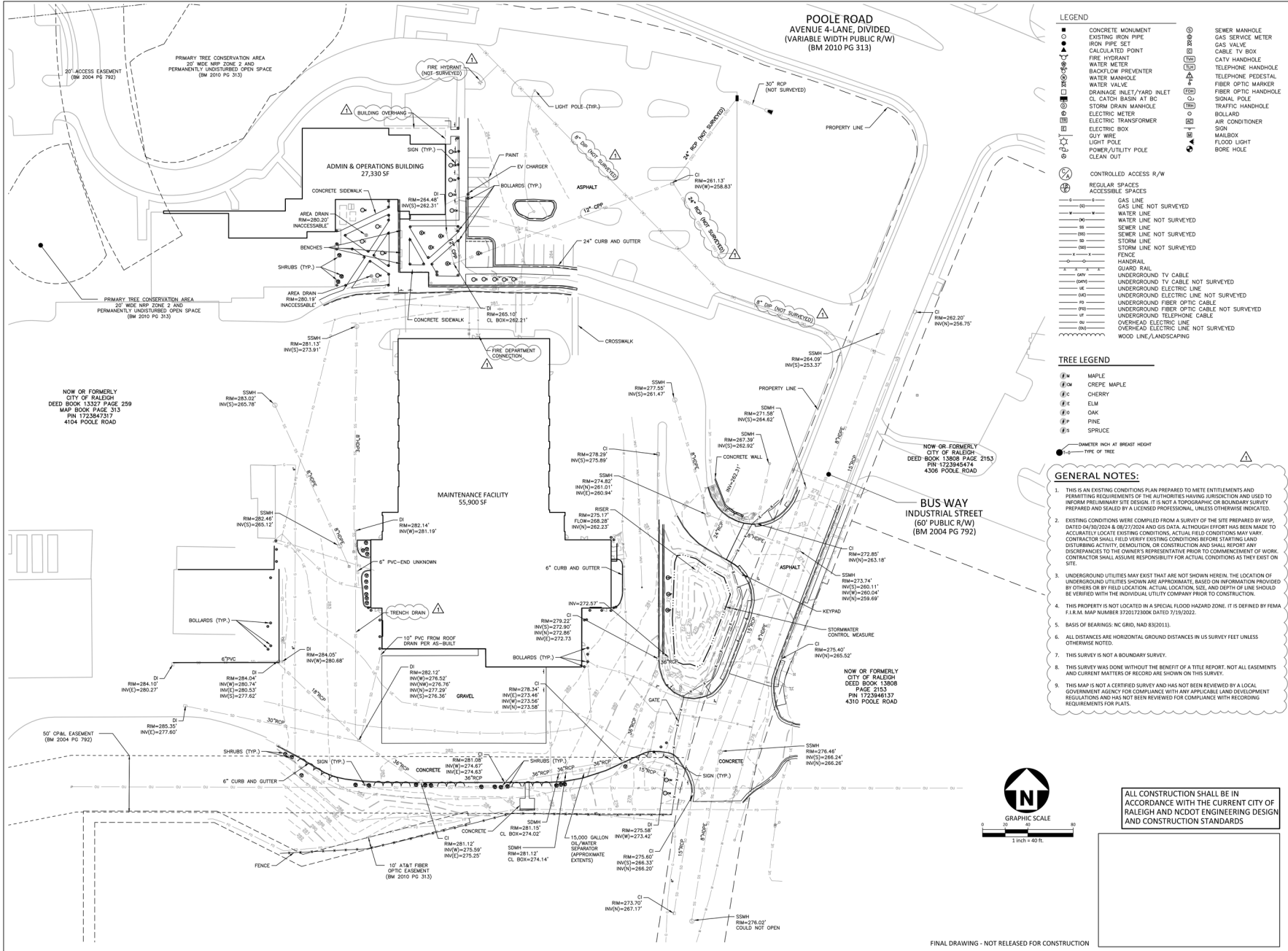
2. ALL STORM DRAINAGE PIPES SHOWN SHALL BE CLASS III REINFORCED CONCRETE (RCF) UNLESS NOTED OTHERWISE.
3. ALL STORM DRAINAGE CONSTRUCTION SHALL BE IN ACCORDANCE WITH THE CITY OF RALEIGH STANDARDS.
4. ALL CONCRETE SHALL MEET A MINIMUM 3000 PSI COMPRESSIVE STRENGTH.
5. ALL PIPE IN STORM DRAIN STRUCTURES SHALL BE STRUCK EVEN WITH INSIDE WALL.
6. ALL PIPE JOINTS SHALL BE MADE WITH PREFORMED JOINT SEALER, WHICH CONFORMS TO AASHTO SPECIFICATION M-198 FOR TYPE B FLEXIBLE PLASTIC GASKETS UNLESS OTHERWISE NOTED.
7. THE INTERIOR SURFACES OF ALL STORM DRAIN STRUCTURES SHALL BE FINISHED BY MECHANICAL MEANS AND SHALL HAVE A TENDENCY TO FLOW OR BEHAVE IN A PLASTIC MANNER UNDER THE TAMPING BLOBS OR PPOOF ROLLING.
8. ALL BACKFILL SHALL BE NON-PLASTIC IN-NATIVE, FREE FROM ROOTS, VEGETATION MATTER, WASTE, STRUCTURAL MATERIAL OR OTHER DEBRIS. BACKFILL SHALL BE PLACED AND COMPACTED IMMEDIATELY AFTER THE PIPE IS Laid. THE FILL AROUND THE PIPE SHALL HAVE NO TENDENCY TO FLOW OR BEHAVE IN A PLASTIC MANNER UNDER THE TAMPING BLOBS OR PPOOF ROLLING.
9. MATERIALS DEMAND BY THE OWNER'S REPRESENTATIVE OR GEOTECH AS UNSUITABLE FOR BACKFILL PURPOSES SHALL BE REMOVED AND REPLACED WITH SUITABLE MATERIAL.
10. BACKFILL SHALL BE PLACED AND COMPACTED IMMEDIATELY AFTER THE PIPE IS Laid. THE FILL AROUND THE PIPE SHALL BE THOROUGHLY COMPACTED TO 95 % OF THE MAXIMUM DRY DENSITY OBTAINABLE WITH THE STANDARD PROCTOR TEST. THE TOP EIGHT (8) INCHES SHALL BE COMPACTED TO 100 PERCENT UNBUILT.
11. UNDER NO CIRCUMSTANCES SHALL PIPE BE ALLOWED TO RISE IN UNBUILT TRENCHES AFTER PIPE HAS BEEN PLACED.
12. ALL CONCRETE PIPE AND PRECAST STORM STRUCTURES SHALL MEET NCDOT STANDARDS AND STAMPED ACCORDINGLY BY MANUFACTURER.
13. CONTRACTOR SHALL BE RESPONSIBLE FOR CHECKING ALL PIPE AND STRUCTURES FOR CRACKS OR BREAKS, PRIOR TO INSTALLATION. ANY DAMAGED ITEMS SHALL NOT BE INSTALLED.
14. "KNOCK OUT" HOLES OR NEW PIPE SHALL NOT BE ALLOWED WITHOUT PUBLIC RIGHT-OF-WAYS UNLESS APPROVED IN WRITING BY THE CITY OF RALEIGH STORMWATER DEPARTMENT.
15. ALL PRIVATE STORM DRAINAGE EASEMENTS AND STORMWATER MEASURES WILL BE MAINTAINED BY THE PROPERTY OWNER(S).
16. CONTRACTOR TO COORDINATE THE LOCATION OF CONDUIT WITH STORM DRAINAGE.

1. CONTRACTOR SHALL PERFORM DEMOLITION ACTIVITIES AS NOTED AND SHOWN ON THE DEMOLITION PLAN AND AS DIRECTED BY THE OWNER'S REPRESENTATIVE IN ACCORDANCE WITH CURRENT APPLICABLE LOCAL, STATE, AND FEDERAL LAWS.
2. THE CONTRACTOR SHALL FERRY AND LOCATE ALL EXISTING UTILITIES ON SITE PRIOR TO DEMOLITION.
3. CONTRACTOR SHALL OBTAIN ANY PERMITS AND PAY FEES REQUIRED FOR DEMOLITION AND Haul-Off FROM THE APPROPRIATE AUTHORITIES.
4. ALL WASTE MATERIAL GENERATED FROM DEMOLITION ACTIVITIES SHALL BE DISPOSED OF OFF-SITE IN ACCORDANCE WITH ALL APPLICABLE RULES AND REGULATIONS.
5. THE DEMOLITION PLAN IS INTENDED TO DEPICT GENERAL DEMOLITION AND UTILITY WORK. IT IS NOT INTENDED TO IDENTIFY EACH ELEMENT OF DEMOLITION OR RELOCATION. CONTRACTOR IS RESPONSIBLE FOR APPROPRIATE ACQUISITION OF UTILITY INFORMATION FROM THE RESPECTIVE UTILITY COMPANIES AND SHALL COORDINATE WITH THE OWNER'S REPRESENTATIVE AND APPROPRIATE UTILITY COMPANIES PRIOR TO WORK.
6. INSTALL EROSION AND SEDIMENT CONTROL DEVICES AND TREE PROTECTION FENCE PRIOR TO STARTING DEMOLITION WORK. SEE EROSION CONTROL NOTES AND PLANS FOR ADDITIONAL INFORMATION.
7. CONTRACTOR SHALL TAKE MEASURES TO AVOID COLLISIONS WITH EXISTING UTILITIES TO REMAIN. DAMAGE TO EXISTING UTILITIES SHALL BE REPAIRED AT THE CONTRACTOR'S EXPENSE.
8. CONTRACTOR TO COORDINATE UTILITY CUTOFF OF EXISTING STRUCTURES WITH APPROPRIATE UTILITY COMPANY.
 - a) CONTRACTOR SHALL COORDINATE REMOVAL AND RELOCATION OF UTILITY APPLIANCES AS DETERMINED NECESSARY THROUGH THEIR COORDINATION WITH UTILITY PROVIDER. UTILITY APPLIANCES TO BE REMOVED MAY INCLUDE BUT NOT BE LIMITED TO: INVERTS, MANHOLES, VALVES, AND/OR OTHER UTILITY STRUCTURES. CONTRACTOR SHALL OBTAIN AND MAINTAIN SUFFICIENT SANSITARY SEWER CLEANOUTS, AND STORM DRAIN INLETS. ALL UTILITIES AND ASSOCIATED APPLIANCES SCHEDULED FOR REMOVAL SHALL BE REMOVED TO THE STREET OR PAVED SURFACE. ANY SANSITARY OR STORM DRAIN REIMBURSEMENT ASSOCIATED WITH RETURNING SANI APPLIANCES SHALL BE REMITTED TO THE UTILITY COMPANY.
9. REMOVE AND PUMP EXISTING UTILITIES SUCH AS SANITARY SEWER, WATER, GAS, ELECTRIC, AND TELECOMMUNICATIONS AS NOTED ON PLANS.
10. CONTRACTOR SHALL CUT AND PUMP OR ARRANGE FOR THE APPROPRIATE UTILITY COMPANY TO CUT AND PUMP ALL UTILITIES LOCATED AT THE STREET OR PAVED SURFACE AS REQUIRED. ON OTHER NOTED NOTED, ALL SERVICES MAY NOT BE SHOWN ON THE PLAN. CONTRACTOR SHALL INVESTIGATE THE SITE PRIOR TO BIDDING TO DETERMINE THE EXTENT OF EXISTING PIPING TO BE REMOVED. CUT, OR PUMP/ARRANGE FOR THE APPROPRIATE UTILITY COMPANY.
11. WATER OR SEWER ANABSORPTION OR RELOCATION MAY BE REQUIRED AT THE MAIN LINE.
12. CONTRACTOR SHALL BE RESPONSIBLE FOR RESETTING OF CURB BOXES, VALVE BOXES, ETC.

CONTRACTOR SHALL NOTIFY "NC811" (811) OR (1-800-632-4949) AT
AT LEAST 3 FULL BUSINESS DAYS PRIOR TO BEGINNING CONSTRUCTION
OR EXCAVATION TO HAVE EXISTING UTILITIES LOCATED.
CONTRACTOR SHALL CONTACT ANY LOCAL UTILITIES THAT PROVIDE
THEIR OWN LOCATOR SERVICES INDEPENDENT OF "NC811".
REPORT ANY DISCREPANCIES TO THE ENGINEER IMMEDIATELY.

ALL CONSTRUCTION SHALL BE IN ACCORDANCE WITH THE CURRENT CITY OF RALEIGH AND NCDOT ENGINEERING DESIGN AND CONSTRUCTION STANDARDS

ALL PRODUCTS PROVIDED ON THIS PROJECT MUST BE MANUFACTURED IN COMPLIANCE WITH THE BUY AMERICA PROGRAM FOR FEDERALLY FUNDED TRANSPORTATION PROJECTS PER CODE OF FEDERAL REGULATIONS 49 CFR 66. THESE REQUIREMENTS ARE DISTINCT AND DIFFERENT FROM THOSE OF THE BUY AMERICAN ACT OF 1933.

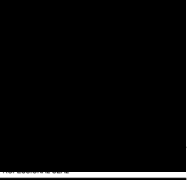


PRIME CONSULTANT: **wsp** USA
434 Fayetteville Street
Raleigh, NC 27604
Tel.: +1 919 836 4540
www.wsp.com

SUBCONSULTANT: **McADAMS**
The John R. McAdams Company, Inc.
4415 Glenwood Drive
Raleigh, NC 27605
Phone: 919.825.4300
Fax: 919.825.2288
E-mail: mcadams@mcadams.com

REV	DESCRIPTION	DATE
1	1ST ASR COMMENTS	01.23.2025

GORALEIGH OPERATIONS AND MAINTENANCE FACILITY (POOLE ROAD) EXPANSION
4104 POOLE ROAD
RALEIGH, NC 27610
CITY OF RALEIGH, NORTH CAROLINA

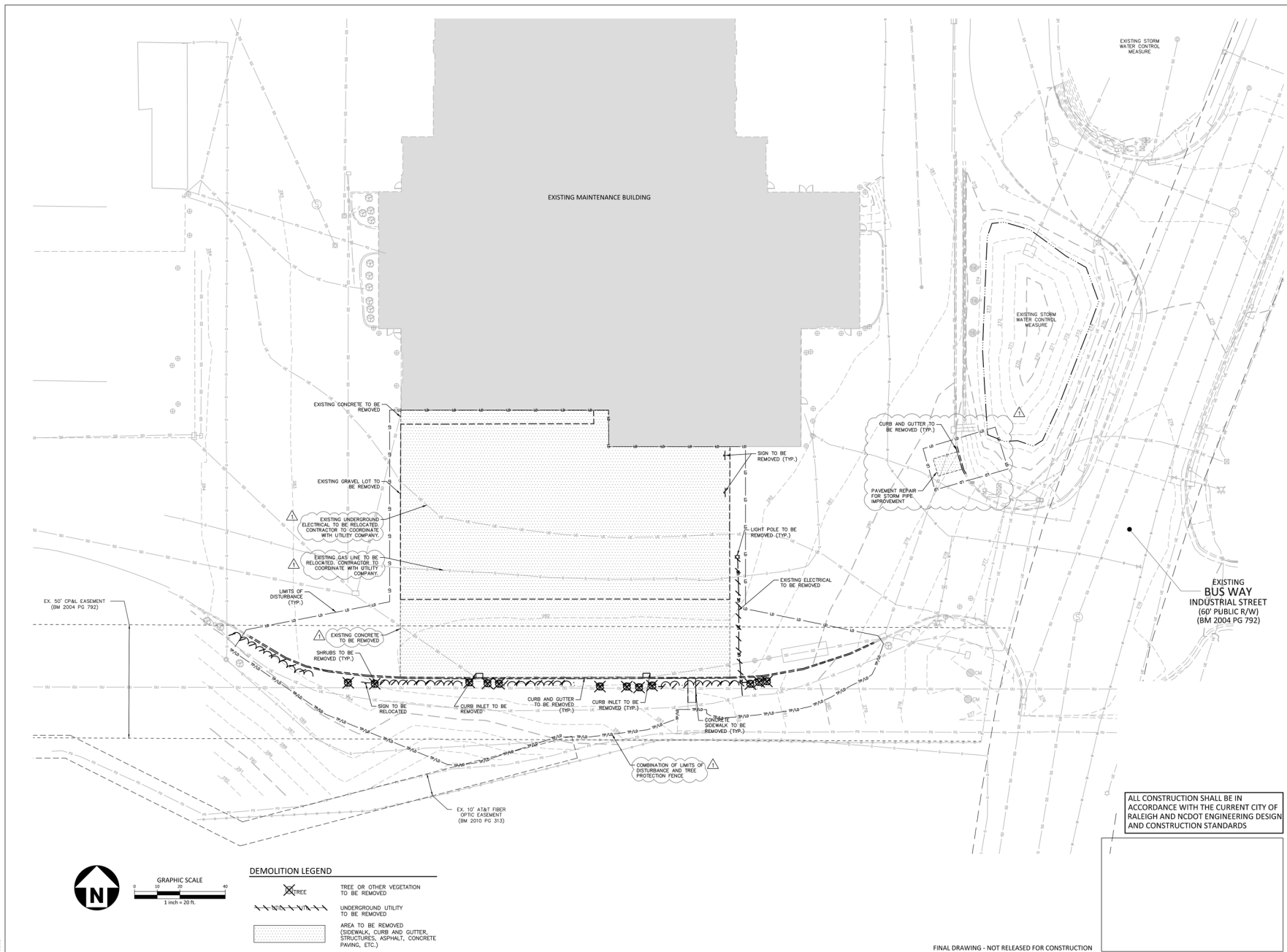


SHEET NAME:
EXISTING CONDITIONS

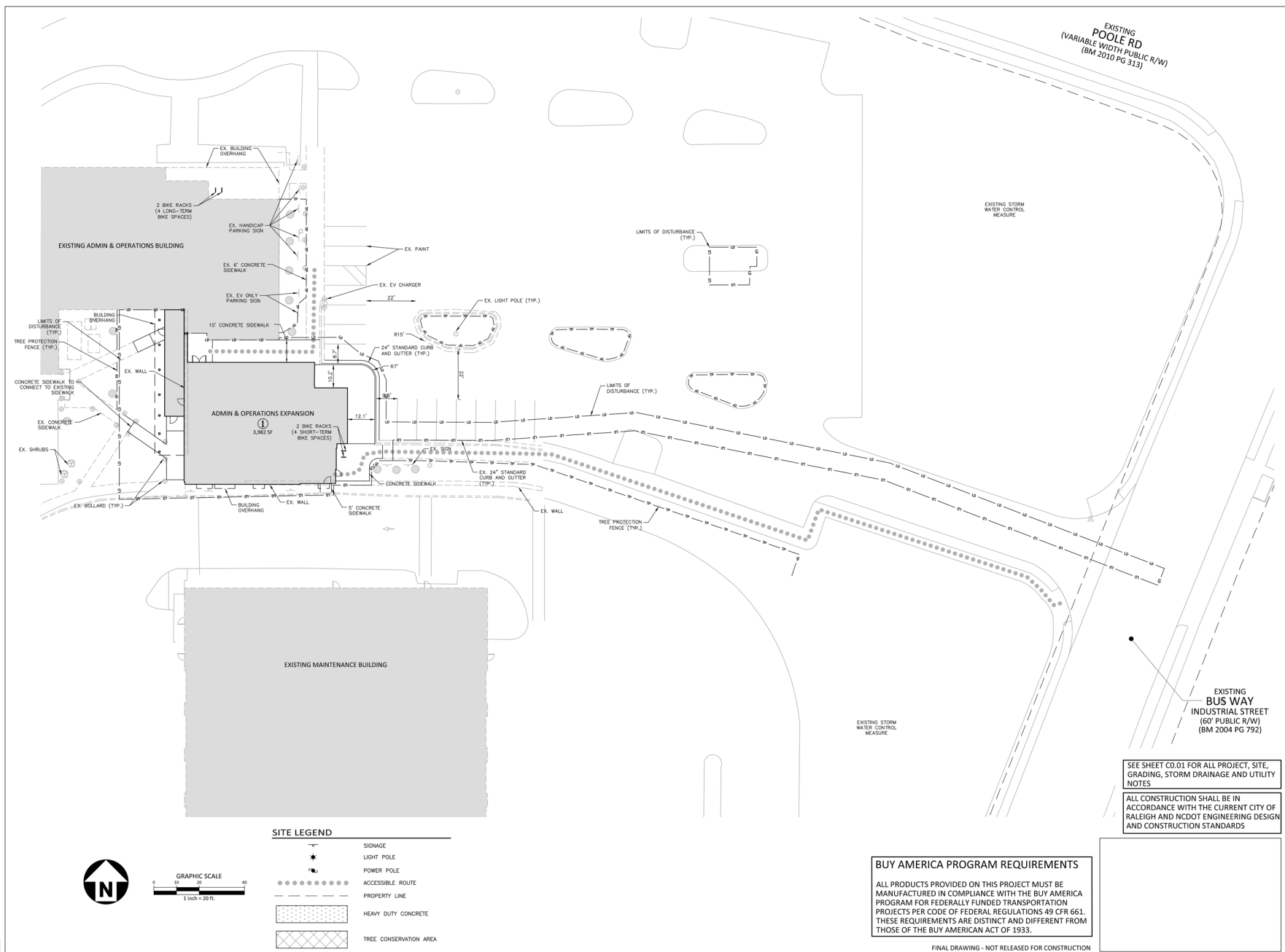
DESIGNED BY: SJC
DRAWN BY: WMH
CHECKED BY: LAW
DATE: 01.24.2025
SCALE: 1"=40'

SHEET NUMBER

C1.00

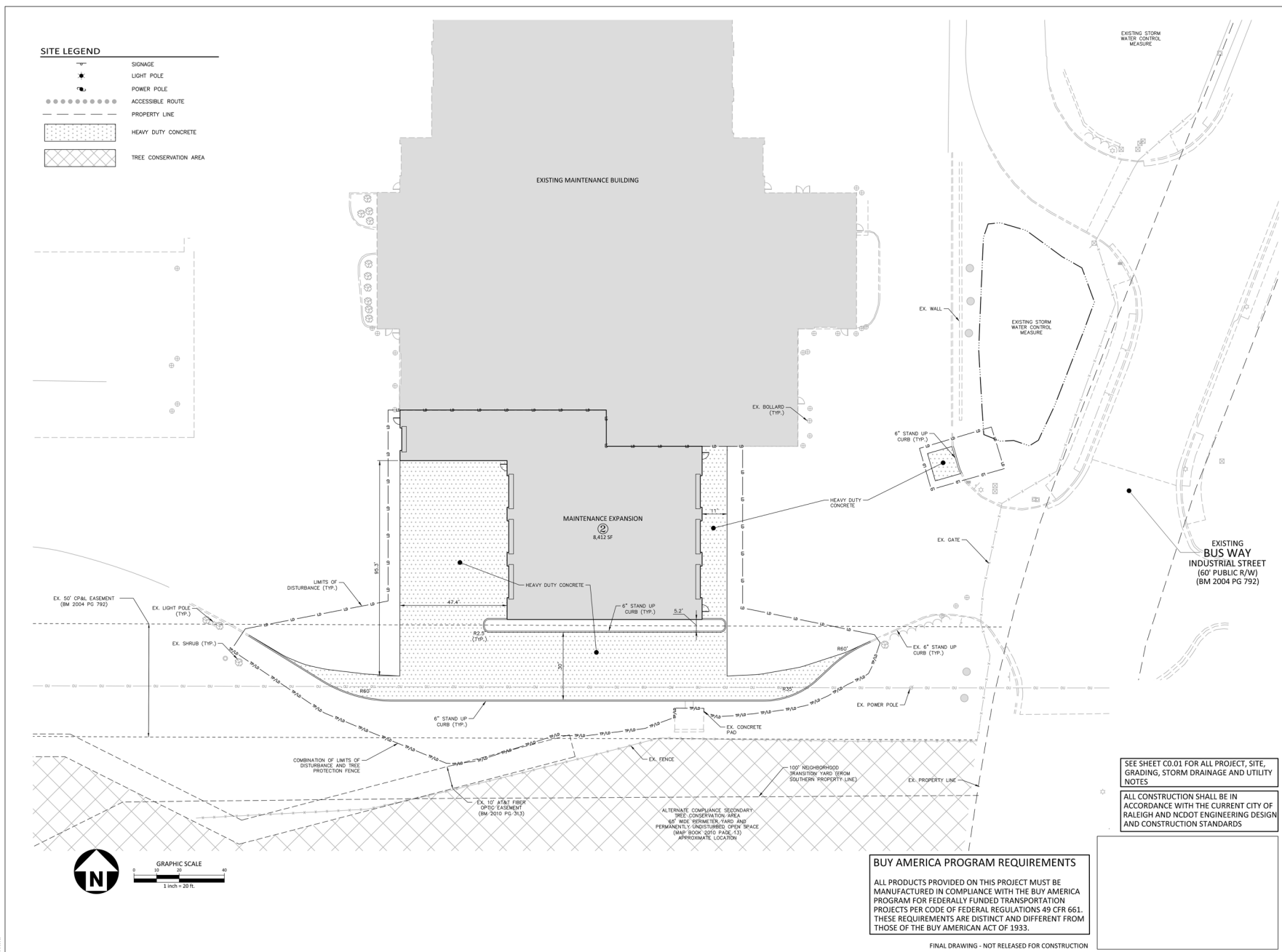


X:\Projects\WSP\WSP24001\04-Production\Engineering\Construction Drawings\Current Drawings\01-ASH SET\WSP24001-0M1.dwg, 1/23/2025 12:37:50 PM, Whitson McCusker
 X:\Projects\WSP\WSP24001\04-PRODUCTION\ENGINEERING\CONSTRUCTION DRAWINGS\CURRENT DRAWINGS\01-ASH SET\WSP24001-0M1.dwg



LAST EDITED: 11/11/2010
FILE PATH: \\

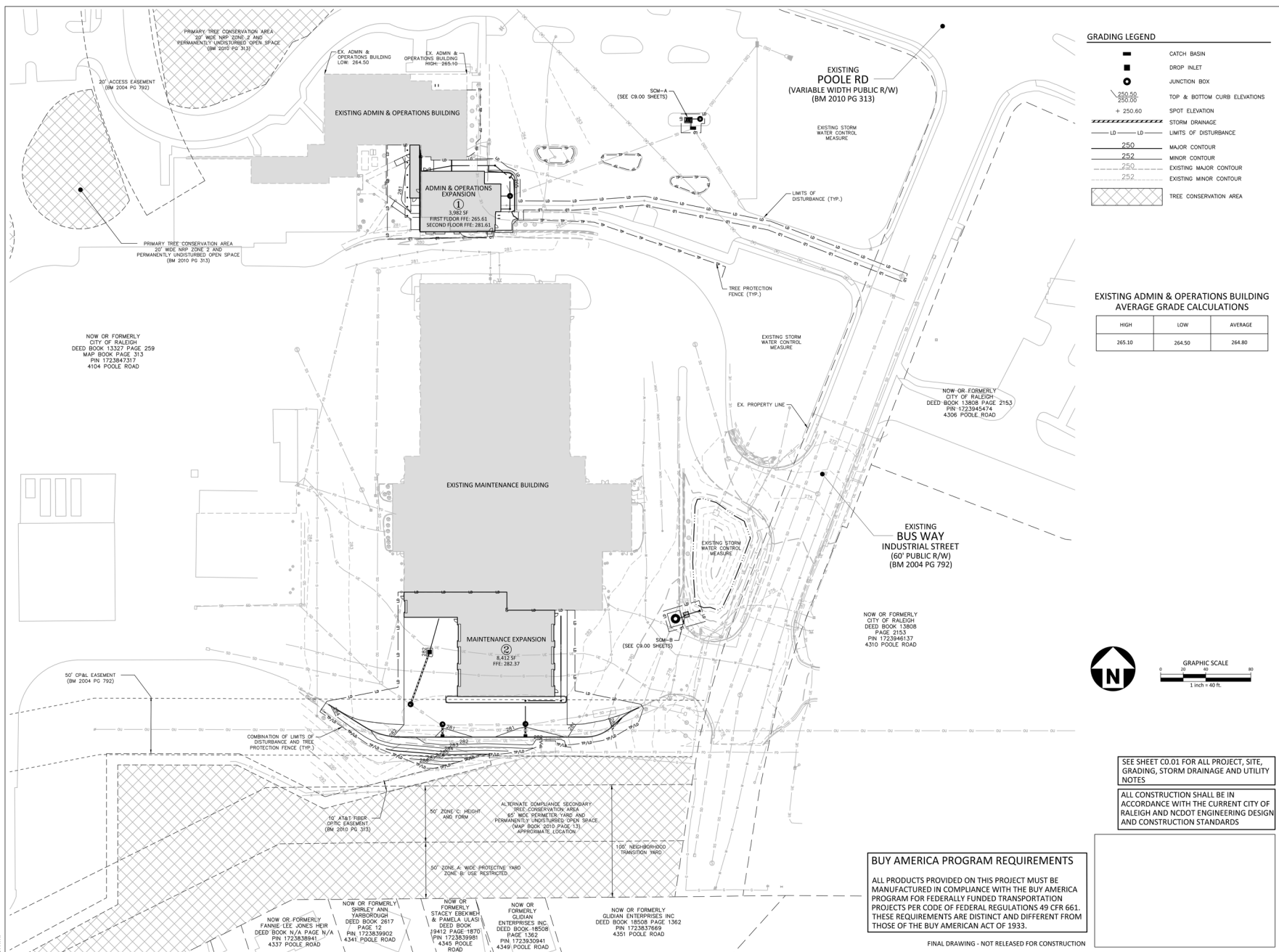




X:\Projects\WSP\WSP-24001\04-Production\Engineering\Construction Drawings\Current Drawings\01-A08 Set\2025-04-25-A08 Slip Sheets\WSP-24001-S1.dwg, 4/25/2025 3:09:03 PM, Brynley Holt
 X:\Projects\WSP\WSP-24001\04-Production\Engineering\Construction Drawings\Current Drawings\01-A08 Set\2025-04-25-A08 Slip Sheets\WSP-6001-S1.dwg
 X:\Projects\WSP\WSP-24001\04-Production\Engineering\Construction Drawings\Current Drawings\01-A08 Set\2025-04-25-A08 Slip Sheets\WSP-6001-S1.dwg
 X:\Projects\WSP\WSP-24001\04-Production\Engineering\Construction Drawings\Current Drawings\01-A08 Set\2025-04-25-A08 Slip Sheets\WSP-6001-S1.dwg

60% - NOT FOR CONSTRUCTION

BUY AMERICA PROGRAM REQUIREMENTS

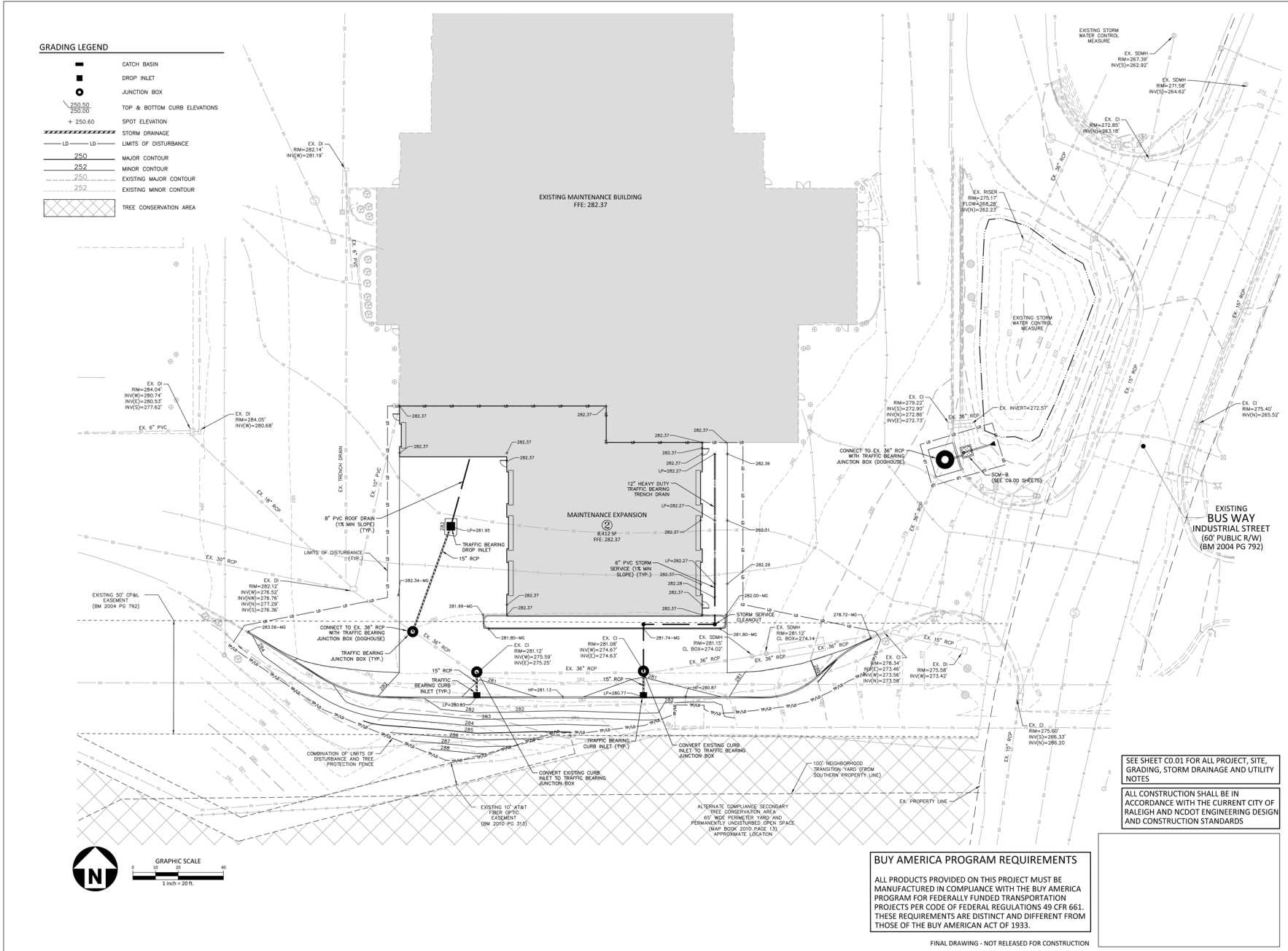


BUY AMERICA PROGRAM REQUIREMENTS

FINAL DRAWING - NOT RELEASED FOR CONSTRUCTION



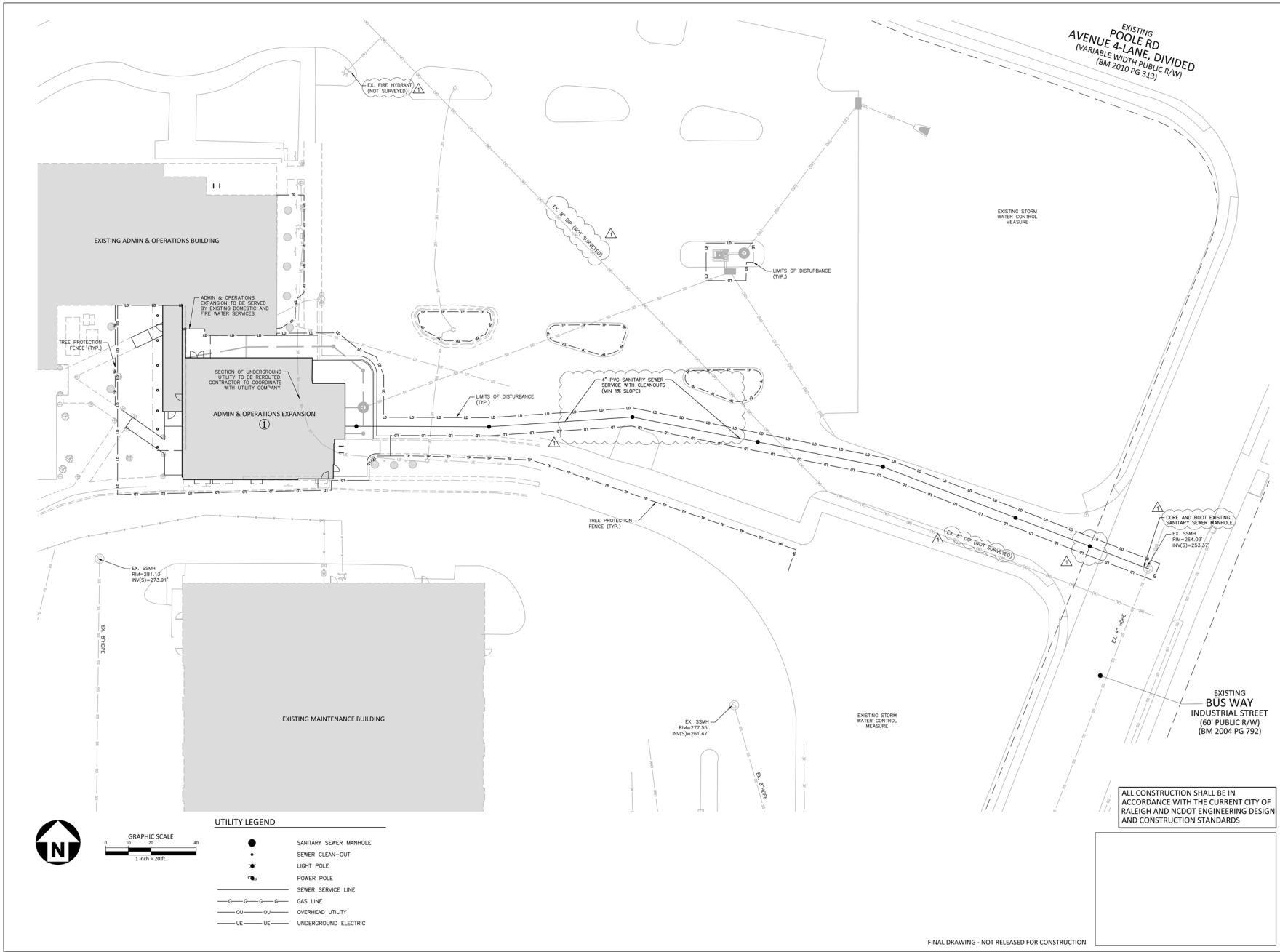
LAST EDITED: X:\Projects\WSP\WSP24003\04_Production\Engineering\Construction\Drawings\Current Drawings\01-A08_Sect\2025-04-25-A08_Slip Sheets\WSP24003_04G1.dwg, 4/25/2025, 2:59:16 PM, Brayden Holt
FILE PATH: X:\Projects\WSP\WSP24003\04_Production\Engineering\Construction\Drawings\Current Drawings\01-A08_Sect\2025-04-25-A08_Slip Sheets\WSP24003_04G1.dwg



SHEET NUMBER **C3.02**

FINAL DRAWING - NOT RELEASED FOR CONSTRUCTION

LAST EDITED: X:\Projects\WSP\404202104\Production\Engineering\Construction Drawings\Current Drawings\01-12-2021 12:38:26 PM, William McAdams
FILE PATH: X:\Projects\WSP\404202104\Production\Engineering\Construction Drawings\Current Drawings\01-12-2021 12:38:26 PM, William McAdams



PRIME CONSULTANT:
wsp WSP USA
Suite 1500
434 Fayetteville Street
Raleigh, NC 27604
Tel.: +1 919 836 4040
wsp.com

SUBCONSULTANT:
MCADAMS The John A. McAdams Company, Inc.
411 Greenleaf Way
Raleigh, NC 27605
Phone 919 823 4300
Fax 919 823 2288
Licenses: C-2203, C-187
www.mcadams.com

REV	DESCRIPTION	DATE
1	1ST ASR COMMENTS	01.23.2025

**GORALEIGH OPERATIONS AND
MAINTENANCE FACILITY
(POOLE ROAD) EXPANSION**
4104 POOLE ROAD
RALEIGH, NC 27610
CITY OF RALEIGH, NORTH CAROLINA

SHEET NAME:
UTILITY PLAN - ADMIN & OPS

DESIGNED BY:	SJC
DRAWN BY:	WHM
CHECKED BY:	LAW
DATE:	01.24.2025
SCALE:	1"=20'

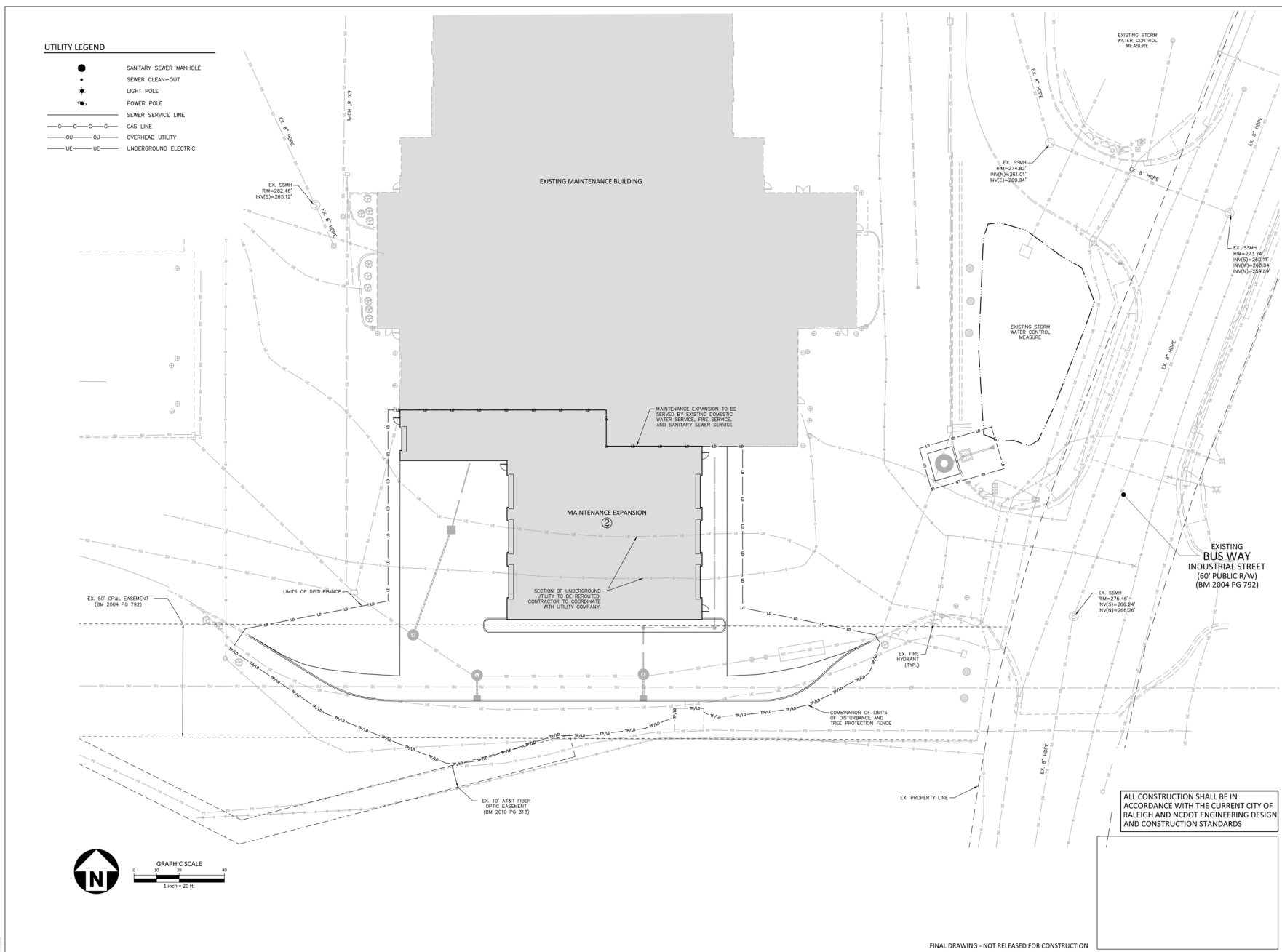
REG. SCALE SHEET 0001-400-0107-001

SHEET NUMBER

C4.00

60% - NOT FOR CONSTRUCTION

FINAL DRAWING - NOT RELEASED FOR CONSTRUCTION



FINAL DRAWING - NOT RELEASED FOR CONSTRUCTION



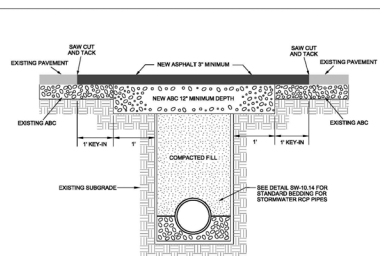
STANDARD 24" CURB AND GUTTER

24" SPILL CURB AND GUTTER

NOTES:

1. 10" MAXIMUM BETWEEN DUMMY JOINTS. 15" MAXIMUM BETWEEN DUMMY JOINTS ON MACHINE POURS.
2. 1/2" EXPANSION JOINT EVERY 50'.
3. 3000 PSI CONCRETE MINIMUM, 4" SLUMP MAXIMUM.
4. LIQUID MEMBRANE CURING COMPOUND SHALL MEET THE REQUIREMENTS OF SECTION 1026-2 OF NCDOT STANDARDS AND SPECIFICATIONS FOR ROADS AND STRUCTURES.
5. ALL CONSTRUCTION JOINTS SHALL BE FILLED WITH FILLER AND SEALER IN ACCORDANCE WITH NCDOT ROADWAY STANDARD DETAIL B46.01. THE JOINT MATERIAL SHALL CONFORM TO SECTION 1028-2 OF THE NCDOT STANDARDS AND SPECIFICATIONS FOR ROADS AND STRUCTURES.
6. REFER TO NCDOT DETAIL B46.01 FOR CURB AND GUTTER SUPERELEVATION RATES.

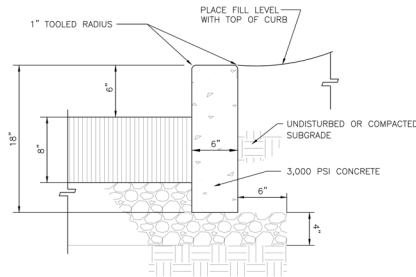
24" CURB AND GUTTER
N.T.S.



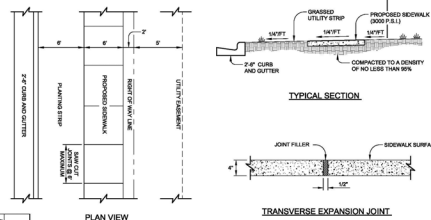
NOTES:

- NOTES:**
1. THE PAVEMENT DEPTH SHALL BE DEFINED BY A STRAIGHT EDGE FORMED BY A MACHINED SAW CUT.
 2. THE TRENCH SUBGRADE MATERIAL SHALL BE BACKFILLED WITH BULKABLE MATERIAL AND COMPACTED TO A DENSITY OF AT LEAST 95% OF THAT OBTAINED BY COMPACTING A SAMPLE OF THE MATERIAL IN ACCORDANCE WITH AASHTO T-99 AS REQUIRED BY NCOT.
 3. THE 12" (305 MM) BULK SHALL CONSIST OF ANCHOR MATERIAL COMPACTED TO A DENSITY EQUAL TO 100% OF THAT OBTAINED BY COMPACTING A SAMPLE OF THE MATERIAL IN ACCORDANCE WITH AASHTO T-99 AS MODIFIED BY NCOT. RETAINMENT BARS OR INDEK MAY BE SUBSTITUTED IF APPROVED BY TRANSPORTATION DISTRICT OR DESIGNER.
 4. THE EXISTE THICKNESS (VERTICAL EDGE OF THE CUT) SHALL BE THICKED.
 5. THE SAME DEPTH OF PAVEMENT MATERIAL, WHICH EXISTS SHALL BE REINTEGRATED, BUT NOT EXCEED THE ASPHALT BE LESS THAN 2" THICK.
 6. THE ASPHALT PAVEMENT FACTORS SHALL BE INSTALLED AND COMPACTED THROUGHOUT AND ROLLED WITH A ROLLER TO ACHIEVE A MINIMUM LEVEL PATCH.

CITY OF RALEIGH	
STANDARD DETAIL	
DATE: 08/08/05	NOT TO SCALE
ASPHALT PAVEMENT PATCH AND RCP PIPE BACKFILL	
T-10.05	

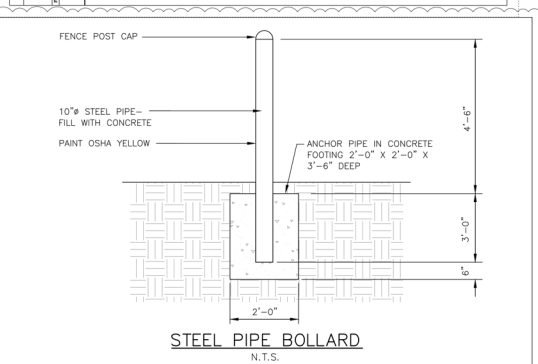


CONCRETE HEADER CURB DETAIL
N.T.S.

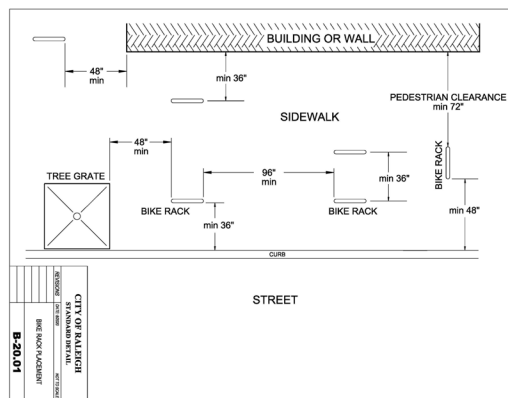


NOTES

- NOTES:
1. TRANSVERSE EXPANSION JOINTS TO BE A MAXIMUM OF 50 FEET.
 2. ALL CONCRETE TO BE 3000 PSI AND FINISHED WITH CURING COMPOUND.
 3. A 6 INCH DEPTH IS REQUIRED AT LOCATIONS OF DRIVEWAY CROSSINGS, AT STREET INTERSECTIONS (ALONG THE LENGTH OF RADIUS CURB RETURNS) AND IN THE HANDICAP RAMPS.



STEEL PIPE BOLLARD
N.T.S.



ALL CONSTRUCTION SHALL BE IN ACCORDANCE WITH THE CURRENT CITY OF RALEIGH AND NCDOT ENGINEERING DESIGN AND CONSTRUCTION STANDARDS

60% - NOT FOR CONSTRUCTION

SHEET NAME
SITE DETAILS

DESIGNED BY:	SJC
DRAWN BY:	WHM
CHECKED BY:	LAW
DATE:	01.24.2025
SCALE:	NTS

FIG. 1. SCALE SHIFT 50% AND 0.02% 3d

SHEET NUMBER

C8.00



PRIME CONSULTANT:
wsp

WSP USA
Suite 1500
434 Fayetteville Street
Raleigh, NC 27601
Tel.: +1 919 836
4040 wsp.com

SUBCONSULTANT:



The John R. Moldams Company, Inc.
621 Hillsborough St.
Suite 500
Raleigh, NC 27603
phone 919. 823. 4300
fax 919. 361. 2269
license number: C-0293, C-187

REV	DESCRIPTION	DATE
1	1ST ASR COMMENTS	01.23.2025

**GORALEIGH OPERATIONS AND
MAINTENANCE FACILITY
(POOLE ROAD) EXPANSION**
4104 POOLE ROAD
RALEIGH, NC 27610

CITY OF RALEIGH, NORTH CAROLINA

CITY OF RALEIGH, NORTH CAROLINA

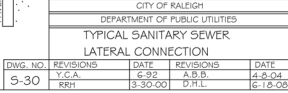
1

[illegible]**INFO**

FINAL DRAWING - NOT RELEASED FOR CONSTRUCTION

ALL CONSTRUCTION SHALL BE IN ACCORDANCE WITH THE CURRENT CITY OF RALEIGH AND NCDOT ENGINEERING DESIGN AND CONSTRUCTION STANDARDS

LAST EDITED: _____
FILE PATH: _____



--

60% - NOT FOR CONSTRUCTION

SUBCONSULTANT:



The John R. McAdams Company, Inc.
623 Hillsborough St.
Suite 500
Raleigh, NC 27603
phone 919. 823. 4300
fax 919. 362. 2269
license number: C-9293, C-187

McADAMS

www.mcadamsco.com

**GORALEIGH OPERATIONS AND
MAINTENANCE FACILITY
(POOLE ROAD) EXPANSION**

4104 POOLE ROAD
RALEIGH, NC 27610

CITY OF RALEIGH, NORTH CAROLINA

DESIGNED BY:	SJC
DRAWN BY:	WHM
CHECKED BY:	LAW
DATE:	01.24.2025
SCALE:	NTS

FULL SCALE SHEET SIZE= ANSI-D (22" x 34")

C8.03

GENERAL NOTES

- ## LANDSCAPE SPECIFICATIONS

1. THE GRADES SHOWN ON THIS PLAN ARE FINISHED GRADES. IF AFTER CONSTRUCTION/COMPACTION THE SOILS ADJACENT TO THE FILTERRA ARE NOT DETERMINED SUITABLE FOR PLANTING BY A LANDSCAPE PROFESSIONAL, THE CONTRACTOR SHALL AMEND THE SOIL AS DIRECTED BY A LANDSCAPE PROFESSIONAL.

COMPACTION OF SUBGRADE IN-SITU SOIL

3. IN ORDER TO PREVENT DAMAGE TO THE PIPE, NO COMPACTION EQUIPMENT SHALL CROSS ANY PIPE UNTIL MINIMUM COVER IS ESTABLISHED ALONG THE PIPE. CONTRACTOR SHALL COMPACT THE IN-SITU SOIL TO AT LEAST 95% OF THE STANDARD PROCTOR MAXIMUM DRY DENSITY (ASTM D-698). THE FILL SOILS SHALL BE COMPACTED AT A MOISTURE CONTENT WITHIN -1 TO +3 PERCENT OF ITS OPTIMUM MOISTURE CONTENT. COMPACTION TESTS SHALL BE PERFORMED BY THE ON-SITE GEOTECHNICAL ENGINEER DURING CONSTRUCTION TO VERIFY THAT THE PROPER COMPACTION LEVEL HAS BEEN REACHED. THE FILL SHOULD BE COMPACTED USING A SHEEPSFOOT TYPE COMPACTOR. MEDIA WITHIN THE FILTERRA SHALL NOT BE COMPACTED.

STATEMENT OF RESPONSIBILITY

SS LAYOUT PLAN

10/1/2023

101+102 INTERSECTION

EXISTING 30" RCP
INV 254.99

30" RCP
(NOT SURVEYED)
OUTLET TO EXISTING WET POND 2

EXISTING STORM WATER
CONTROL MEASURE
(BMP 2" - WET POND)

TIE TO EXISTING 24" RCP
(LOCATION APPROXIMATE
TO BE VERIFIED WITH
ADDITIONAL SURVEY)

PROPOSED SCM A

24" RCP (NOT SURVEYED)

PROPOSED JUNCTION
BOX

PROPOSED CURB
INLET

24" RCP (NOT SURVEYED)

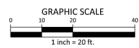
12" CPV
(NOT SURVEYED)

RM=261.11'
INV(W)=258.83'

GRAPHIC SCALE
0 10 20 40
1 inch = 20 feet

ALL CONSTRUCTION SHALL BE IN
ACCORDANCE WITH THE CURRENT CITY OF
RALEIGH AND NCDOT ENGINEERING DESIGN
AND CONSTRUCTION STANDARDS

ALL CONSTRUCTION SHALL BE IN ACCORDANCE WITH THE CURRENT CITY OF RALEIGH AND NCDOT ENGINEERING DESIGN AND CONSTRUCTION STANDARDS



FINAL DRAWING - NOT RELEASED FOR CONSTRUCTION



PRIME CONSULTANT:

WSI

WSP USA
Suite 1500
434 Fayetteville Street
Raleigh, NC 27604
Tel.: +1 919 836
4040 wsp.com

SUBCONSULTANT:



The John R. McAdams Company, Inc.
821 Hillsborough St
Suite 500
Raleigh, NC 27605
phone 919. 823. 4300
fax 919. 361. 2269
license number: C-0293, C-187

McADAMS

REV	DESCRIPTION	DATE
1	1ST ASR COMMENTS	01.23.2025

**GORALEIGH OPERATIONS AND
MAINTENANCE FACILITY
(POOLE ROAD) EXPANSION**
4104 POOLE ROAD
RALEIGH, NC 27610

CITY OF RALEIGH, NORTH CAROLINA

60% - NOT FOR CONSTRUCTION

SHEET NAME
SCM A - PLAN

DESIGNED BY:	KEB
DRAWN BY:	KEB/RMB
CHECKED BY:	
DATE:	01. 24. 2025
SCALE:	1"=20'

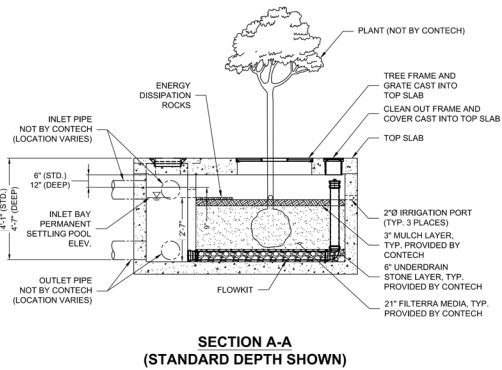
1/8" SCALE SHEET SIZE: ANSI D (22" x 34")

SHEET NUMBER

C9.00

X:\Projects\WSP\WSP-28021\04-Production\Water Resources\Stormwater Management\Stormwater Design\Current Drawings\Ch\WSP-24001-SCM-4.dwg, 1/21/2025, 12:39:27 PM, Whiston McCaslin

X:\Projects\WSP\WSP-28021\04-Production\Water Resources\Stormwater Management\Stormwater Design\Current Drawings\Ch\WSP-28001-SCM-4.dwg



NTS

*MAX. BYPASS FLOW IS INTERNAL WEIR FLOW. CAPACITIES SHOWN ARE FOR STANDARD DEPTH AND DEEP (-D), RESPECTIVELY. SITE SPECIFIC ANALYSIS IS REQUIRED TO DETERMINE CURB INLET FLOW CAPACITY.

--

60% - NOT FOR CONSTRUCTION

C9.01

STORMWATER CONTROL MEASURE 'B' CONSTRUCTION SPECIFICATIONS

GENERAL NOTES

- PRIOR TO CONSTRUCTION, ANY DISCREPANCIES IN THE PLANS AND NOTES SHALL BE BROUGHT TO THE DESIGN ENGINEER'S ATTENTION IMMEDIATELY. IF THE CONTRACTOR, IN THE COURSE OF WORK, FINDS ANY DISCREPANCIES IN THE PLANS OR NOTES GIVEN BY THE PROJECT ENGINEER, IT SHALL BE THEIR DUTY TO IMMEDIATELY INFORM THE PROJECT ENGINEER IN WRITING, ANY WORK DONE AFTER SUCH A DISCOVERY, UNLESS AUTHORIZED, WILL BE AT THE CONTRACTOR'S RISK.
- THE CONTRACTOR SHALL OBTAIN ALL NECESSARY LICENSES AND PERMITS REQUIRED TO COMPLETE THE WORK INCLUDED IN THE CONTRACT DOCUMENTS AT THE CONTRACTOR'S EXPENSE.
- IT IS THE CONTRACTOR'S RESPONSIBILITY TO VERIFY THAT THEY AND THEIR SUBCONTRACTORS HAVE THE CORRECT AND MOST UP-TO-DATE PLANS AVAILABLE.
- THE PROJECT WILL MEET ALL RELEVANT DESIGN REQUIREMENTS IN THE NCDDC MANUAL AND THE (LOCAL JURISDICTION) REGULATIONS AND STANDARDS.
- ALL OHIA REQUIREMENTS FOR EXCAVATIONS (SHORING, DEPTH, ETC.) ARE THE RESPONSIBILITY OF THE CONTRACTOR. IF REQUIRED, THE CONTRACTOR SHALL PROVIDE AN EXCAVATION PLAN TO BE SEALED BY A P.E. IT IS THE RESPONSIBILITY OF THE CONTRACTOR TO DETERMINE IF AN EXCAVATION PLAN IS REQUIRED. THE JOHN R. MCADAMS COMPANY ASSUMES NO RESPONSIBILITY FOR ANY EXCAVATION DESIGN RELATED TO SAFETY OR OHIA REQUIREMENTS.
- MANUFACTURER OR AUTHORIZED SUPPLIER TO SUBMIT SHOP DRAWINGS FOR FILTERBA SYSTEM FOR APPROVAL. DRAWINGS SHALL INCLUDE PRINCIPAL DIMENSIONS, ENGINEERED BORILTRATION MEDIA PLACEMENT, LOCATION OF PIPING AND UNIT FOUNDATION.
 - MANUFACTURER OR AUTHORIZED SUPPLIER SHALL SUBMIT INSTALLATION INSTRUCTIONS TO THE CONTRACTOR.
 - MANUFACTURER OR AUTHORIZED SUPPLIER SHALL SUBMIT OPERATIONS AND MAINTENANCE MANUAL TO THE ENGINEER.
 - BEFORE INSTALLATION OF THE FILTERBA SYSTEM, CONTRACTOR SHALL OBTAIN THE WRITTEN APPROVAL OF THE ENGINEER OF RECORD FOR THE SHOP DRAWINGS.
- THE DESIGN ENGINEER OR THEIR REPRESENTATIVE SHALL BE ON SITE FOR THE INSTALLATION OF ESSENTIAL ELEMENTS OF STORMWATER CONTROL MEASURE INCLUDING BUT NOT LIMITED TO THE FLOW SPLITTERS, UNDERDRAIN CONNECTIONS, VAULT, AND TREE PLANTINGS. THE CONTRACTOR SHALL NOTIFY THE DESIGN ENGINEER 72 HOURS PRIOR TO INSTALLATION OF THESE ITEMS TO ENSURE THAT A REPRESENTATIVE CAN BE ON SITE. PHOTOGRAPHS OF THESE ITEMS MUST BE TAKEN PRIOR TO BACKFILLING FOR USE IN THE AS-BUILT PHASE. IF THE CONTRACTOR INSTALLS THESE ITEMS WITHOUT THE ENGINEER OR ENGINEER'S REPRESENTATIVE ON SITE, THEN THE ELEMENTS SHALL BE UNCOVERED FOR INSPECTION AT THE CONTRACTOR'S EXPENSE.
- KEY MEASUREMENTS FOR EACH STORMWATER CONTROL ARE LISTED BELOW
 - FILTERBA MEDIA SURFACE AREA: 16 SF
 - VAULT SIZE: 4 FT W X 4 FT L
 - RCP INLET PIPE SIZE: 12 IN
 - RCP OUTLET PIPE SIZE: 12 IN
- ALL CONSTRUCTION ACTIVITY RELATED TO THE PROPOSED STORMWATER CONTROL MEASURE SHALL BE PER THE DETAILS AND SPECIFICATIONS SHOWN IN THESE DRAWINGS. IF ANY DEVIATIONS ARE REQUIRED, THE DESIGN ENGINEER SHALL BE NOTIFIED OF TO APPROVE ANY PROPOSED MODIFICATIONS PRIOR TO IMPLEMENTATION.
- THE CONTRACTOR SHALL NOTIFY THE DESIGN ENGINEER WHEN INSTALLATION IS COMPLETE SO A SYSTEM "ACTIVATION" INSPECTION CAN BE SCHEDULED. "ACTIVATION" OF THE FILTERBA WILL BE PROVIDED BY CONTECH ENGINEERED SOLUTIONS WHEN CONSTRUCTION IS COMPLETE AND ADJOINING PAVEMENTS AND LANDSCAPING HAVE BEEN INSTALLED.
- THE FILTERBA SYSTEM SHALL NOT BE USED AS A TEMPORARY EROSION CONTROL DEVICE DURING CONSTRUCTION.
- IT IS ANTICIPATED THAT DEWATERING MAY BE NECESSARY IN THE EXCAVATION AREAS (E.G., SUB GRADE, INTERIOR PORTIONS OF THE STORMWATER CONTROL MEASURE, ETC.). THEREFORE, THE CONTRACTOR SHALL FURNISH, INSTALL, OPERATE, AND MAINTAIN ANY PUMPING EQUIPMENT, ETC., NEEDED FOR REMOVAL OF WATER FROM VARIOUS PARTS OF THE STORMWATER CONTROL MEASURE SITE.
 - DURING PLACEMENT OF FILL WITHIN THESE AREAS, THE CONTRACTOR SHALL KEEP THE WATER LEVEL BELOW THE BOTTOM OF THE EXCAVATION / CONSTRUCTION AREAS.
 - THE MANNER IN WHICH THE WATER IS REMOVED SHALL BE SUCH THAT THE EXCAVATION BOTTOM AND SIDE SLOPES ARE STABLE, WITH NO SEDIMENT DISCHARGED FROM THE SITE (I.E., PUMPED WATER SHALL BE DIRECTED TO AN APPROVED EROSION CONTROL DEVICE PRIOR TO DISCHARGE).

LANDSCAPE SPECIFICATIONS

- THE GRADES SHOWN ON THIS PLAN ARE FINISHED GRADES. IF AFTER CONSTRUCTION/COMPACTION THE SOILS ADJACENT TO THE FILTERBA ARE NOT DETERMINED SUITABLE FOR PLANTING BY A LANDSCAPE PROFESSIONAL, THE CONTRACTOR SHALL AMEND THE SOIL AS DIRECTED BY A LANDSCAPE PROFESSIONAL.

COMPACTION OF SUBGRADE IN-SITU SOIL

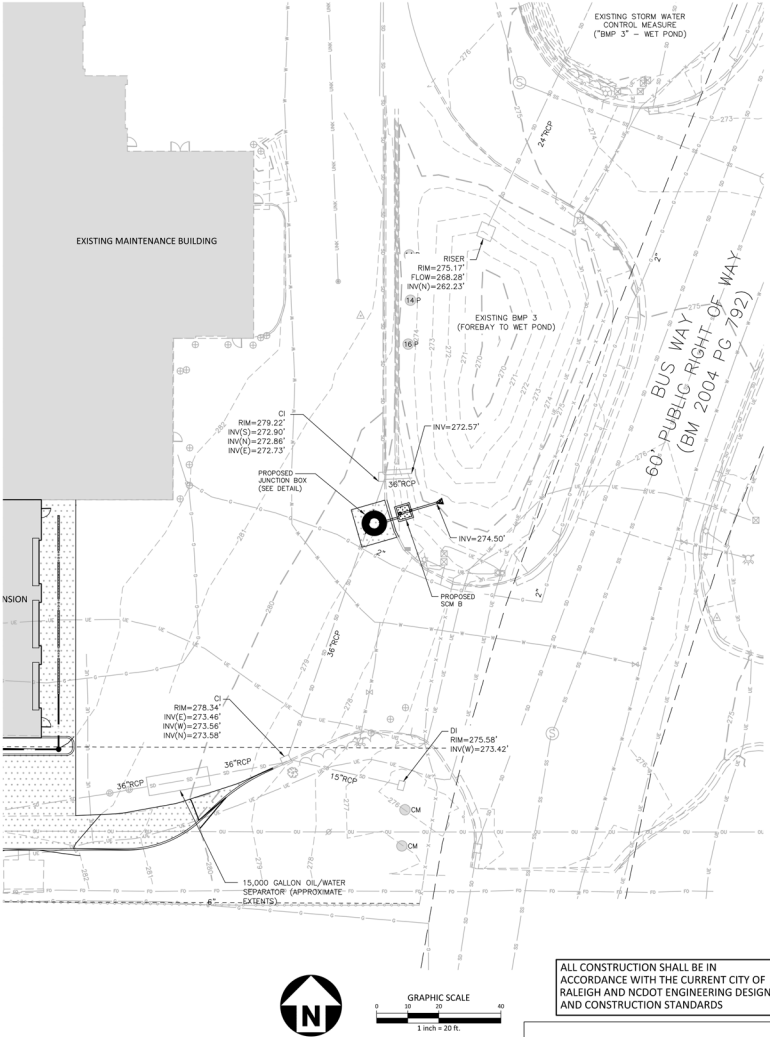
- IN ORDER TO PREVENT DAMAGE TO THE PIPE, NO COMPACTION EQUIPMENT SHALL CROSS ANY PIPE UNLESS MINIMUM COVER IS ESTABLISHED ALONG THE PIPE. CONTRACTOR SHALL COMPACT THE IN-SITU SOIL TO AT LEAST 90% OF THE STANDARD PROCTOR MAXIMUM DRY DENSITY (ASTM D-1555). THE FILL SOILS SHALL BE COMPACTED AT A MOISTURE CONTENT WITHIN ± 3 PERCENT OF ITS OPTIMUM MOISTURE CONTENT. COMPACTION TESTS SHALL BE PERFORMED BY THE ON-SITE GEOTECHNICAL ENGINEER DURING CONSTRUCTION TO VERIFY THAT THE PROPER COMPACTION LEVEL HAS BEEN REACHED. THE FILL SHOULD BE COMPACTED USING A SHEEPSFOOT TYPE COMPACTOR. MEDIA WITHIN THE FILTERBA SHALL NOT BE COMPACTED.

CONSTRUCTION SEQUENCE FOR BIORETENTION AREA

- PRIOR TO CONSTRUCTION AS APPLICABLE, THE OWNER SHALL OBTAIN A LAND DISTURBING (GRADING OR EROSION CONTROL) PERMIT AND AN "APPROVAL TO CONSTRUCT" FROM THE LOCAL JURISDICTION OR STATE (DEPENDENT) AND ALL OTHER NECESSARY PERMITS FROM APPLICABLE AGENCIES (E.G., 404/401 PERMITS).
- INSTALL ALL SEDIMENT AND EROSION CONTROL MEASURES PER THE APPROVED SEDIMENT AND EROSION CONTROL PLAN. THE CONTRACTOR SHALL MAINTAIN ALL APPROVED SEDIMENT AND EROSION CONTROL MEASURES THROUGHOUT THE ENTIRE PROJECT SITE AND DURATION, AS REQUIRED. THE CONTRACTOR SHALL RECEIVE APPROVAL FROM THE EROSION CONTROL INSPECTOR, AS REQUIRED BY GOVERNING AGENCIES, PRIOR TO ANY CLEARING.
- THE AREAS ON WHICH ANY FILL IS TO BE PLACED SHALL BE CLEARED AND STRIPPED OF TOPSOIL, TREES, ROOTS, VEGETATION, AND OTHER OBJECTIONABLE MATERIAL GREATER THAN 6-IN IN SIZE. THE AREAS ON WHICH FILL IS TO BE PLACED SHALL BE SCARIFIED AT LEAST 6 IN DEEP PRIOR TO PLACEMENT OF NEW FILL.
- FOUNDATION AREAS MAY REQUIRE UNDERCUTTING OF COMPRESSIBLE AND/OR UNSUITABLE SOILS IN ADDITION TO THAT INDICATED ON THE PLANS. ALL SUCH UNDERCUTTING SHALL BE PERFORMED AT THE DISCRETION OF THE GEOTECHNICAL ENGINEER AND SHALL BE MONITORED AND DOCUMENTED. IN NO CASE SHALL THERE BE AN ATTEMPT TO STABILIZE ANY PORTIONS OF THE FOUNDATION SOILS WITH CRUSHED STONE.
- TREATMENT OF SEEPAGE AREAS, SUBGRADE PREPARATION, FOUNDATION DENSITING AND ROCK FORMATION PREPARATION (I.E., TREATMENT WITH SLUSH GROUTING, DENTAL CONCRETE, ETC.) MAY BE REQUIRED AT THE DISCRETION OF THE GEOTECHNICAL ENGINEER. ALL SUCH ACTIVITIES SHALL BE CLOSELY MONITORED AND DOCUMENTED BY THE GEOTECHNICAL ENGINEER.
- ONCE THE UPSTREAM DRAINAGE AREA IS STABILIZED AND THE EROSION CONTROL INSPECTOR APPROVES THE REMOVAL OF EROSION CONTROL MEASURES, THE CONTRACTOR SHALL REMOVE ALL SEDIMENT, TRASH, ETC., FROM THE FILTERBA AREA, WHICH SHALL BE DISPOSED OF PROPERLY (I.E., PLACED IN A LANDFILL) AND NOT STOCKPILED IN AN AREA WHERE WATER QUALITY COULD BE ADVERSELY IMPACTED.
- THE FILTERBA INSTALLATION, AND OUTLET CONNECTIONS WILL BE CONSTRUCTED ONCE THE EROSION CONTROL PHASE IS COMPLETE.
- ONCE THE FILTERBA AREA IS CLEARED OUT, THE FINAL EXCAVATION TO THE BOTTOM OF THE OUTLET PIPE OR OTHER LOWEST ELEVATION WITHIN THE FILTERBA AREA MAY BE COMPLETED.
- PRIOR TO SCHEDULING FILTERBA "ACTIVATION", THE CONTRACTOR SHALL REQUEST AN ON-SITE MEETING WITH THE DESIGN ENGINEER'S REPRESENTATIVE AND THE EROSION CONTROL INSPECTOR TO ENSURE THE UPSTREAM DRAINAGE AREA IS COMPLETELY STABILIZED (I.E., GOOD VEGETATIVE COVER).
- CONTRACTOR SHALL REQUEST AN ON-SITE INSPECTION FOR "ACTIVATION" OF THE FILTERBA.
- CONTRACT CERTIFIED SPECIALIST SHALL ACTIVATE FILTERBA AND INSTALL VEGETATION.
- IF THE CONTRACTOR INSTALLS THE FILTERBA PRIOR TO APPROVAL FROM THE DESIGN ENGINEER AND THE EROSION CONTROL INSPECTOR, AND THE FILTERBA FAILS TO FUNCTION PROPERLY (I.E., IT WILL NOT DRAIN DUE TO SEDIMENT DISPOSITION) DUE TO AN UNSTABILIZED UPSTREAM DRAINAGE AREA, THE FILTERBA MEDIA SHALL BE REPLACED AT THE CONTRACTOR'S EXPENSE.

STATEMENT OF RESPONSIBILITY

ALL REQUIRED MAINTENANCE AND INSPECTIONS OF THIS FACILITY SHALL BE THE RESPONSIBILITY OF THE PROPERTY OWNER, PER THE EXECUTED OPERATION AND MAINTENANCE AGREEMENT FOR THIS FACILITY.



FINAL DRAWING - NOT RELEASED FOR CONSTRUCTION



PRIME CONSULTANT:
wsp WSP USA
Suite 1500
434 Fayetteville Street
Raleigh, NC 27604
Tel.: +1 919 836 4040
wsp.com

SUBCONSULTANT:
MCADAMS The John R. McAdams Company, Inc.
4410 Independence Rd.
Raleigh, NC 27605
Phone 919 823 4000
Fax 919 823 2200
www.mcadams.com

REV	DESCRIPTION	DATE
1	1ST ASR COMMENTS	01.23.2025

**GORALEIGH OPERATIONS AND
MAINTENANCE FACILITY
(POOLE ROAD) EXPANSION**
4104 POOLE ROAD
RALEIGH, NC 27610
CITY OF RALEIGH, NORTH CAROLINA

SHEET NAME:
SCM B - PLAN

DESIGNED BY: REB
DRAWN BY: KEB/RMB
CHECKED BY:
DATE: 01.24.2025
SCALE: 1"=20'

FULL SCALE SHEET SIZE: 36" X 48" (31" X 37")

SHEET NUMBER

C9.02

60% - NOT FOR CONSTRUCTION

X:\Projects\WSP\WSP24005\04_Production\Water Resources\Stormwater Management\Stormwater Design\Current Drawings\CD\WSP24001_SCA-B.dwg, 1/21/2025 12:39:40 PM, Whitson McCusick
 X:\Projects\WSP\WSP24005\04_Production\Water Resources\Stormwater Management\Stormwater Design\CURRENT DRAWINGS\CD\WSP24001_SCA-B.dwg
 X:\PROJECTS\WSP\WSP24001\04_PRODUCTION\WATER RESOURCES\STORMWATER MANAGEMENT\STORMWATER DESIGN\CURRENT DRAWINGS\CD\WSP24001_SCA-B.dwg
 FILE PATH:



NTS

[†]UTILIZES (2) CURB OPENINGS WITH MIN 1' SPACING

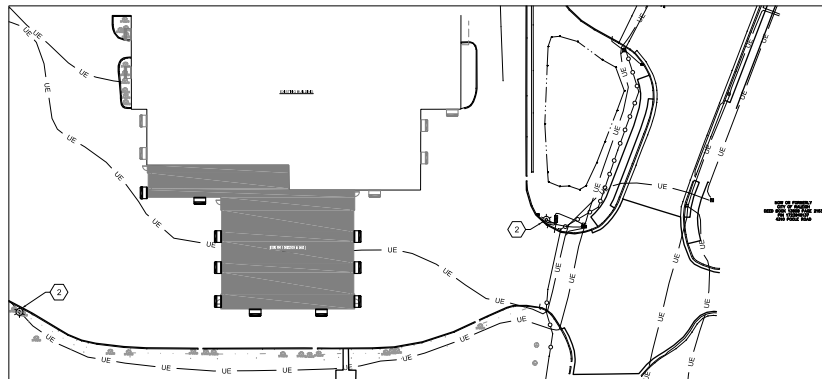
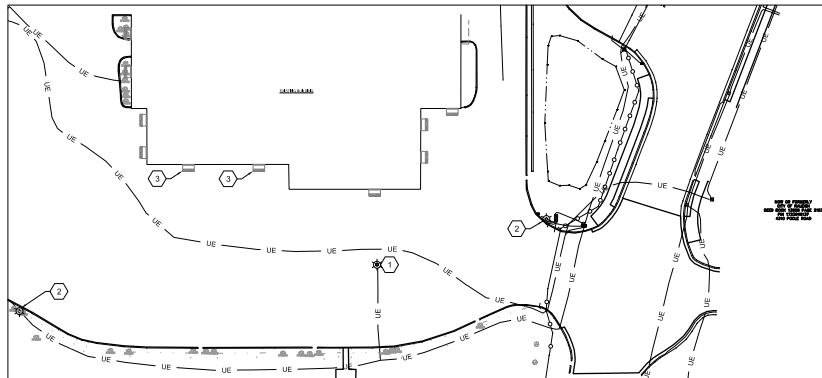





NTS

--

60% - NOT FOR CONSTRUCTION





-  EXISTING FULL CUTOFF FIXTURE MOUNTED ON 30'-0" POLE
-  EXISTING FULL CUTOFF WALL PACK MOUNTED AT 12'-9"
-  NEW FULL CUTOFF WALL PACK TO MATCH EXISTING BUILDING AESTHETIC. MOUNTED AT 12'-9"

1. EXISTING POLE MOUNTED
FIXTURE TO BE DEMOLISHED.
DEMOLISH FIXTURE, POLE, AND
CONCRETE BASE. DEMOLISH
CIRCUIT BRANCH BACK TO
SOURCE.
2. EXISTING POLE MOUNTED
FIXTURE TO REMAIN.
3. EXISTING WALLPAC TO BE
DEMOLISHED. DEMOLISH CIRCUIT
BACK TO NEAREST FIXTURE ON
THE SAME CIRCUIT TO REMAIN.
CIRCUIT TO BE EXTENDED FOR
NEW WALL MOUNTED FIXTURES
DURING NEW CONSTRUCTION.



PRIME CONSULTANT:

wsp

WSP USA
Suite 1500
434 Fayetteville Street
Raleigh, NC 27604

Tel.: +1 919 836
4040 wsp.com

SUBCONSULTANT:
 **ENGINEERED
DESIGNS INC.**
North Carolina License # P-3001
1151 SE Cary Parkway, Suite 200 Cary, North Carolina 27518
P 919.851.8481 F 919.851.9703 www.engineereddesigns.com

REV	DESCRIPTION	DATE
1	1ST ASR COMMENTS	01.15.2025

**GORALEIGH OPERATIONS AND
MAINTENANCE FACILITY
(POOLE ROAD) EXPANSION**
4104 POOLE ROAD
RALEIGH, NC 27610
CITY OF RALEIGH, NORTH CAROLINA

ADMINISTRATIVE SITE REVIEW

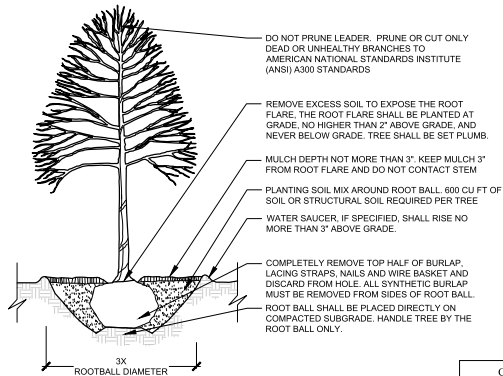
SHEET NAME
SITE LIGHTING PLAN

DESIGNED BY:	CJB
DRAWN BY:	CJB
CHECKED BY:	CJB
DATE:	1-10-2025
SCALE:	1" = 40'-0"

FULL SCALE SHEET SIZE: ANSI-D (22" x 34")

SHEET NUMBER

ES101



CITY OF RALEIGH STANDARD DETAIL		
REVISIONS	DATE	NOT TO SCALE
001	01/10	
TREE PLANTING DETAIL		
TPP-03		

CONTACT INFORMATION:
CITY OF RALEIGH PARKS, RECREATION
AND CULTURAL RESOURCES DEPARTMENT
URBAN FORESTER
TREES@RALEIGHNC.GOV
WWW.RALEIGHNC.GOV

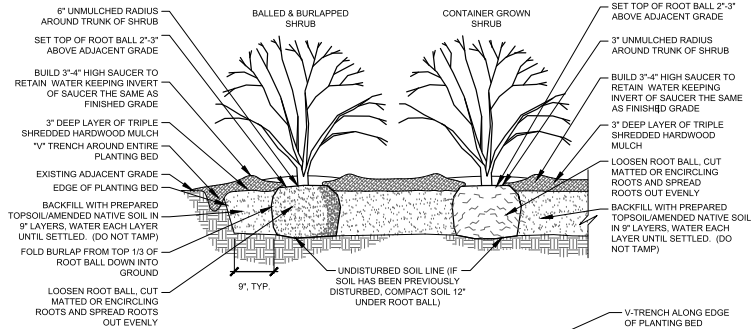
NOTES:

- TREES MUST MEET THE TREE QUALITY STANDARDS IN CH. 2 OF THE CITY TREE MANUAL.
- CONTRACTOR IS RESPONSIBLE FOR ADEQUATE DRAINAGE OF ALL PLANTING PITS. (POSITIVE DRAINAGE AWAY FROM PIT)
- TREES SHALL BE PLANTED BETWEEN OCTOBER 1ST AND APRIL 30TH.
- A TREE IMPACT PERMIT IS REQUIRED.
- ELECTRICAL OUTLETS AND OTHER UTILITIES ARE PROHIBITED IN THE PLANTING AREA IMMEDIATELY SURROUNDING THE TREE.
- IF STAKING IN ACCORDANCE WITH THE CITY TREE MANUAL, THE STAKING MUST BE REMOVED WITHIN ONE YEAR.
- TREES WILL HAVE A MINIMUM 1 YEAR WARRANTY AFTER THE INITIAL PLANTING IS APPROVED BY THE CITY.

TREE PLANTING - CITY OF RALEIGH (STANDARD DETAIL)

Not to Scale

1
L1.02



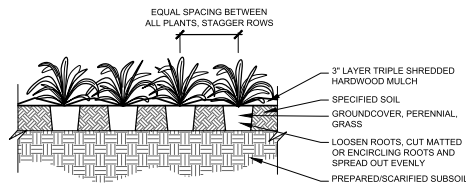
NOTES:

- SEE SPECIFICATIONS FOR DETAILS ON PLANT BED PREPARATION.
- DO NOT INSTALL SHRUBS DURING PERIODS OF WET OR FREEZING SOIL CONDITIONS.
- NO SYNTHETIC FABRIC IS ALLOWED ON ROOT BALLS
- REMOVE ALL BALL TIES OR STRAPPING FROM ROOT BALL
- FOR MASS PLANTINGS OF SHRUBS AND GROUNDCOVERS, USE STAGGERED ROWS WITH EQUAL SPACING BETWEEN ALL PLANTS
- TAMP SOIL FIRMLY AS PIT IS FILLED AROUND EACH PLANT BALL.

SHRUB PLANTING

Not to Scale

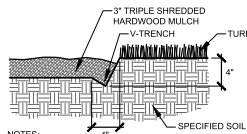
2
L1.02



GROUNDCOVERS/GRASSES/PERENNIALS

Not to Scale

3
L1.02



NOTES:

- APPLY 3" LAYER OF TRIPLE SHREDDED HARDWOOD MULCH.
- CUT BED EDGE WITH SPADE TO CREATE CONSISTENT, CLEAN, STRAIGHT EDGE.

V-TRENCH

Not to Scale

4
L1.02

BUY AMERICA PROGRAM REQUIREMENTS

ALL PRODUCTS PROVIDED ON THIS PROJECT MUST BE MANUFACTURED IN COMPLIANCE WITH THE BUY AMERICA PROGRAM FOR FEDERALLY FUNDED TRANSPORTATION PROJECTS PER CODE OF FEDERAL REGULATIONS 49 CFR 661. THESE REQUIREMENTS ARE DISTINCT AND DIFFERENT FROM THOSE OF THE BUY AMERICAN ACT OF 1933.



PRIME CONSULTANT:
wsp

DESIGN: 2024
DATE: 01/23/2025
1101/2024

SUBCONSULTANT:
Susan Hatchell Landscape Architecture, PLLC
701 W. North Street
Raleigh, NC 27603
Tel: +1 919 838 9600
susan@hatchell.com

REV 1 DESCRIPTION DATE
1ST ASR COMMENTS 01.23.2025

GORALEIGH OPERATIONS AND
MAINTENANCE FACILITY
(POOLE ROAD) EXPANSION
4104 POOLE ROAD
RALEIGH, NC 27610
CITY OF RALEIGH, NORTH CAROLINA

ADMINISTRATIVE S

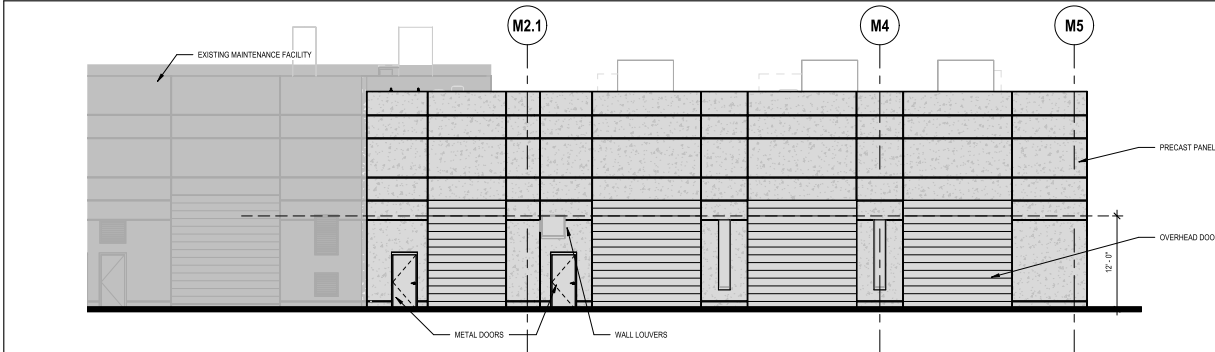
DESIGNED BY: MCA/GHS
DRAWN BY: MCA
CHECKED BY: SMH
DATE: 11/01/2024
SCALE:

SHEET NUMBER

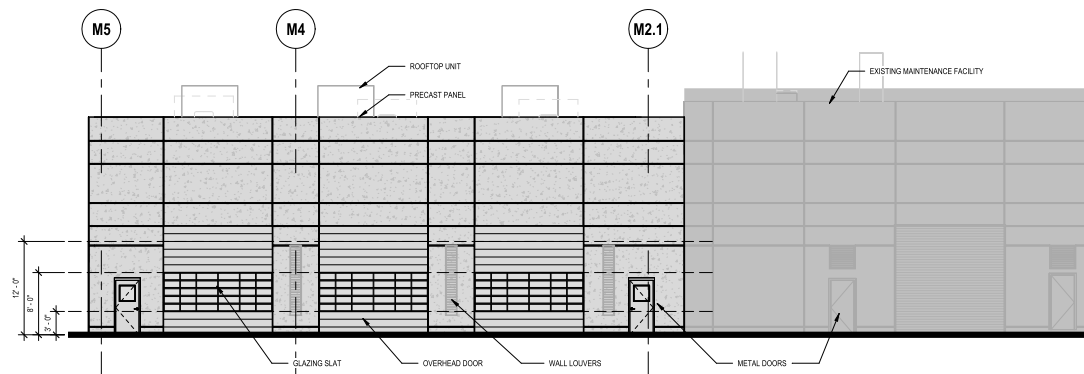
L1.02

LAST EDITED:
FILE PATH:

NOTES: THESE DRAWINGS ARE THE PROPERTY OF THE PRIME CONSULTANT NOTED HEREIN. ANY RE-USE OF THIS WORK WITHOUT WRITTEN CONSENT IS AN INFRINGEMENT OF THE ARCHITECT/ENGINEER'S WORK. IT IS A VIOLATION OF THE LAW FOR ANY PERSON, UNLESS ACTING UNDER THE DIRECT SUPERVISION OF A LICENSED ARCHITECT OR ENGINEER, TO ALTER AN ITEM IN ANY WAY IF AN ITEM BEARING THE SEAL OF AN ARCHITECT OR ENGINEER IS ALTERED. THE ALTERING ARCHITECT OR ENGINEER SHALL AFFIX TO THEIR OWN SEAL AND THE ACTION ALTERED BY FOLLOWING BY THEIR SIGNATURE AND THE DATE OF SUCH ALTERATION AND A SPECIFIC DESCRIPTION OF THE ALTERATION.

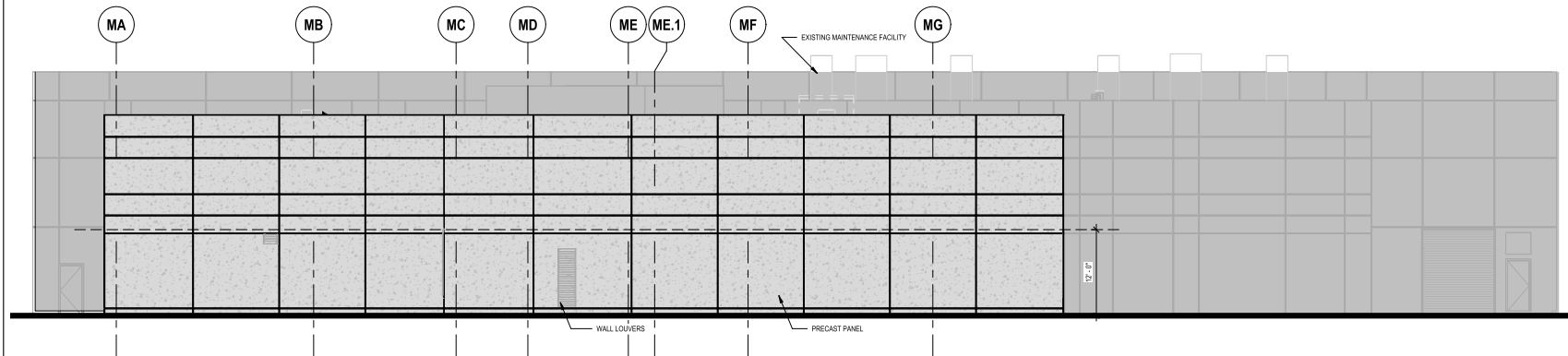


1 MAINTENANCE BUILDING WEST ELEVATION TRANSPARENCY
1/8" = 1'-0"



2 MAINTENANCE BUILDING EAST ELEVATION TRANSPARENCY
1/8" = 1'-0"

1ST FLOOR TRANSPARENCY: 10%
8' - 12' TRANSPARENCY: 23%, 100% OF WHICH WITHIN 3' - 8' BAND



3 MAINTENANCE BUILDING SOUTH ELEVATION TRANSPARENCY
1/8" = 1'-0"

BUY AMERICA PROGRAM REQUIREMENTS
ALL PRODUCTS PROVIDED ON THIS PROJECT MUST BE MANUFACTURED IN COMPLIANCE WITH THE BUY AMERICA PROGRAM FOR FEDERALLY FUNDED TRANSPORTATION PROJECTS PER CODE OF FEDERAL REGULATIONS 49 CFR 661. THESE REQUIREMENTS ARE DISTINCT AND DIFFERENT FROM THOSE OF THE BUY AMERICAN ACT OF 1933.

NOTES

PROVIDING TRANSPARENT GLAZING AREA AND PATTERN SIMILAR TO EXISTING ADJACENT WALL CONDITIONS FOR A CONSISTENT DEGREE OF TRANSPARENCY

- EXISTING BUILDINGS
- TRANSPARENT AREA
- NON TRANSPARENT AREA



PRIME CONSULTANT:
wsp
WSP USA
Suite 1000
434 Fayetteville Street
Raleigh, NC 27604
Tel: +1 919 856 4040
wsp.com

SUBCONSULTANT:

MCADAMS
EDI
SHLA

REV	DESCRIPTION	DATE

**GORALEIGH OPERATIONS AND
MAINTENANCE FACILITY EXPANSION**

4104 POOLE ROAD
RALEIGH, NC 27610
CITY OF RALEIGH, NORTH CAROLINA

PROFESSIONAL SEAL

SHEET NAME
MAINTENANCE BUILDING
ELEVATIONS ASR

DESIGNED BY: MDC
DRAWN BY: ZBL
CHECKED BY: MDC
DATE: 4/21/25
SCALE: As Indicated

PULL SCALE SHEET BODY AND 0.000 SH1

90% - NOT FOR CONSTRUCTION

SHEET NUMBER

A2.11B