

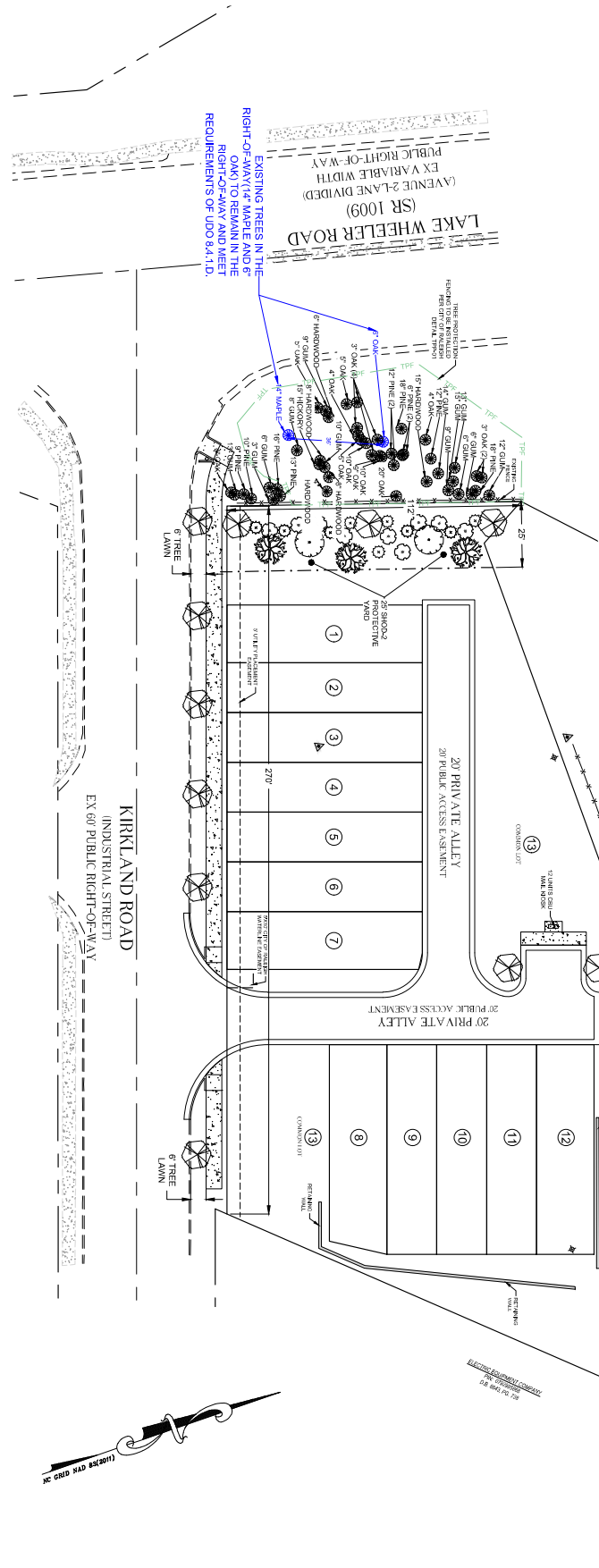
**NOTES:**

1. ALL TREES TO BE PLANTED IN THE CITY OF RALEIGH MUST BE PLANTED IN ACCORDANCE WITH THE CITY OF RALEIGH TREE PLANTING SPECIFICATIONS.
2. ALL TREES TO BE PLANTED IN THE CITY OF RALEIGH MUST BE PLANTED IN ACCORDANCE WITH THE CITY OF RALEIGH TREE PLANTING SPECIFICATIONS.
3. ALL TREES TO BE PLANTED IN THE CITY OF RALEIGH MUST BE PLANTED IN ACCORDANCE WITH THE CITY OF RALEIGH TREE PLANTING SPECIFICATIONS.
4. ALL TREES TO BE PLANTED IN THE CITY OF RALEIGH MUST BE PLANTED IN ACCORDANCE WITH THE CITY OF RALEIGH TREE PLANTING SPECIFICATIONS.
5. ALL TREES TO BE PLANTED IN THE CITY OF RALEIGH MUST BE PLANTED IN ACCORDANCE WITH THE CITY OF RALEIGH TREE PLANTING SPECIFICATIONS.
6. ALL TREES TO BE PLANTED IN THE CITY OF RALEIGH MUST BE PLANTED IN ACCORDANCE WITH THE CITY OF RALEIGH TREE PLANTING SPECIFICATIONS.
7. ALL TREES TO BE PLANTED IN THE CITY OF RALEIGH MUST BE PLANTED IN ACCORDANCE WITH THE CITY OF RALEIGH TREE PLANTING SPECIFICATIONS.
8. ALL TREES TO BE PLANTED IN THE CITY OF RALEIGH MUST BE PLANTED IN ACCORDANCE WITH THE CITY OF RALEIGH TREE PLANTING SPECIFICATIONS.
9. ALL TREES TO BE PLANTED IN THE CITY OF RALEIGH MUST BE PLANTED IN ACCORDANCE WITH THE CITY OF RALEIGH TREE PLANTING SPECIFICATIONS.
10. ALL TREES TO BE PLANTED IN THE CITY OF RALEIGH MUST BE PLANTED IN ACCORDANCE WITH THE CITY OF RALEIGH TREE PLANTING SPECIFICATIONS.
11. ALL TREES TO BE PLANTED IN THE CITY OF RALEIGH MUST BE PLANTED IN ACCORDANCE WITH THE CITY OF RALEIGH TREE PLANTING SPECIFICATIONS.
12. ALL TREES TO BE PLANTED IN THE CITY OF RALEIGH MUST BE PLANTED IN ACCORDANCE WITH THE CITY OF RALEIGH TREE PLANTING SPECIFICATIONS.
13. ALL TREES TO BE PLANTED IN THE CITY OF RALEIGH MUST BE PLANTED IN ACCORDANCE WITH THE CITY OF RALEIGH TREE PLANTING SPECIFICATIONS.
14. ALL TREES TO BE PLANTED IN THE CITY OF RALEIGH MUST BE PLANTED IN ACCORDANCE WITH THE CITY OF RALEIGH TREE PLANTING SPECIFICATIONS.
15. ALL TREES TO BE PLANTED IN THE CITY OF RALEIGH MUST BE PLANTED IN ACCORDANCE WITH THE CITY OF RALEIGH TREE PLANTING SPECIFICATIONS.

- City of Raleigh Planting Requirements:**
- 1) STREET TREES:
    - LAKE WHEELER ROAD:
      - 11'2" / 40' FT = 2 Canopy trees
      - Provided: (2) Emory trees spaced ~40' (Ex. 1" Maple and 6" Oak, See Plan)
    - KIRKLAND ROAD:
      - 28'8" / 40' FT = 6 Canopy trees
      - Provided: (6) 3.5" Caliper Overcup Oak ~40' spacing
  - 2) SHOULDER PROTECTIVE YARD:
    - 11'2" SPACING (AFTER KIRKLAND RD. RIGHT-OF-WAY DEDICATION)
    - SHADE TREES:
      - Required: (3)/100' = 3.38 Trees
      - Provided: (3) 3.5" Caliper Overcup Oaks
    - EMERGENCY TREES:
      - Required: (2)/100' = 2.24 Trees
      - Provided: (2) 2" Caliper Magnolia
  - 3) PARKING TERMINAL ISLANDS:
    - Provided: (2) 3" Caliper Overcup Oak

**Plant Schedule:**

| KEY | BOTANICAL / COMMON NAME         | SIZE             | ROOT  | HEIGHT | SPACING | REMARKS        | QUANTITY |
|-----|---------------------------------|------------------|-------|--------|---------|----------------|----------|
| OI  | Common Tree / Common Oak        | 12" Cal. 40' Ht. | 8.8   | 50.0   | 50.0    | SHADE TREE     | 11       |
| MG  | Magnolia / Magnolia grandiflora | 2" Cal. 8' Ht.   | CONC. | 60.0   | 60.0    | EMERGENCY TREE | 2        |
| AG  | Acorn / American Chestnut       | 1.5" Cal. 8' Ht. | CONC. | 25.0   | 25.0    | SHADE TREE     | 3        |
| MC  | Magnolia / Magnolia grandiflora | 2" Cal. 8' Ht.   | CONC. | 60.0   | 60.0    | EMERGENCY TREE | 2        |
| LR  | Large Tree / Large Oak          | 12" Cal. 40' Ht. | 7.5   | 50.0   | 50.0    | SHADE TREE     | 9        |



**CONCEPT 8 HOLDINGS, LLC**  
307 S. SALEM ST. #200  
APEX, NC 27502

**KIRKLAND TOWNES**  
(SUB-0008-2024)

PRELIMINARY SUBDIVISION

DATE: 05/06/2024

NO. 101 EAST HURDIS  
PHONE: 919.286.2722  
EMAIL: LINDSEY@RDUCONSULTING.COM  
P.O. BOX 118  
CLAYTON, NC 27728

**RDU CONSULTING, PLLC**

LANDSCAPE PLAN

LA-1

DATE REVISION: 05/27/2024

