

Engineering Services

Blue Ridge Road Bike and Pedestrian Improvements Project

Roadway Design & Construction



A. Morton Thomas & Associates, Inc.



Raleigh



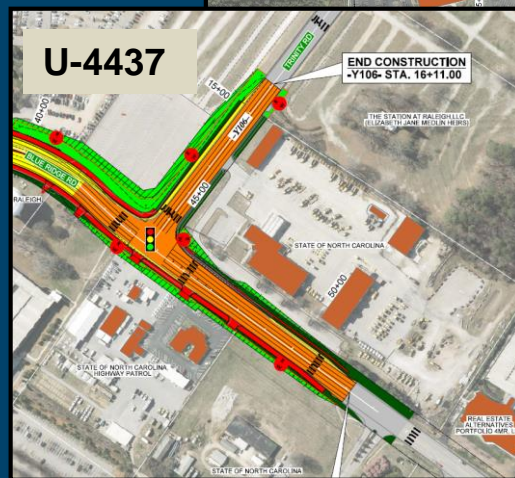
Project Location





Adjacent NCDOT Projects

Anticipated Completion Date:
Summer 2023





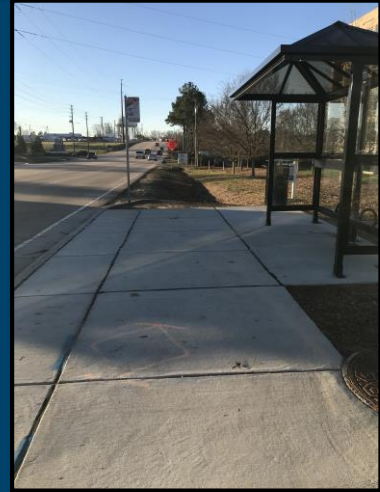
Raleigh

Project Description

- Sidewalk along west side of Blue Ridge Rd.
- Pedestrian bridge over Wade Ave.
- Crosswalks at Wade Ave. ramps
- Protected intersection at Reedy Creek Rd.



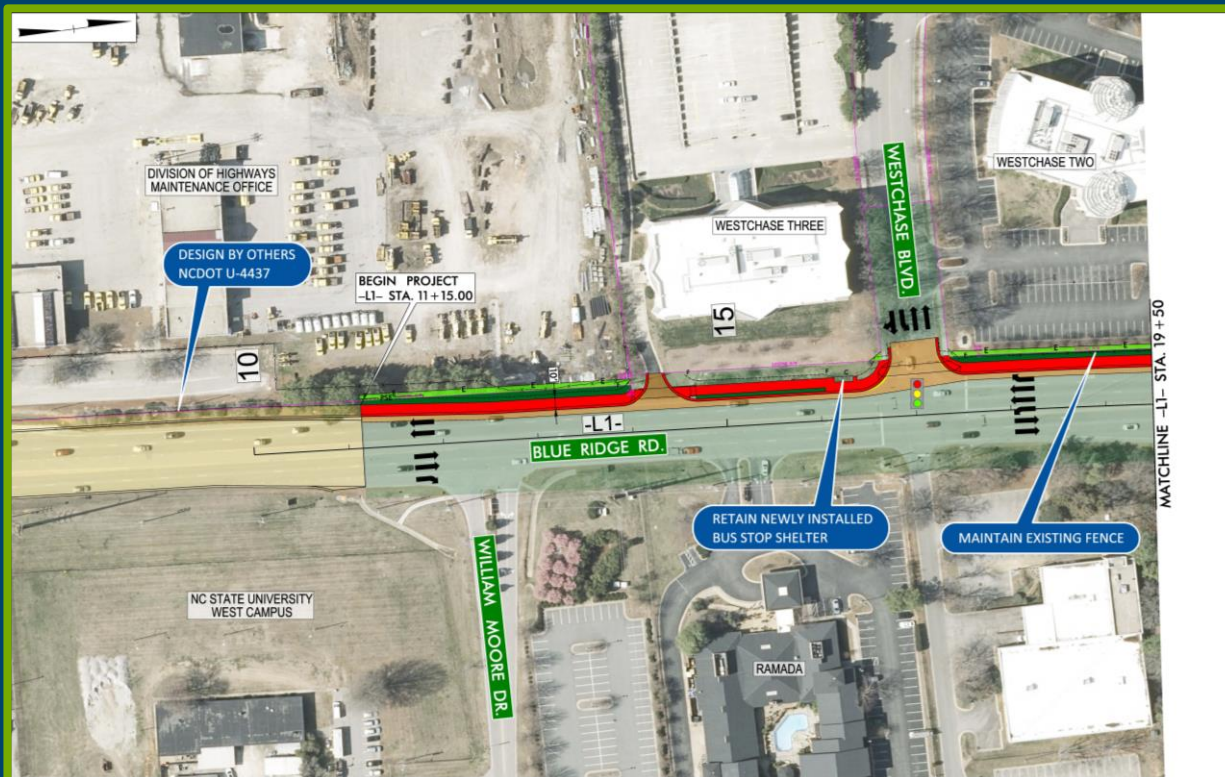
Photo courtesy of Google



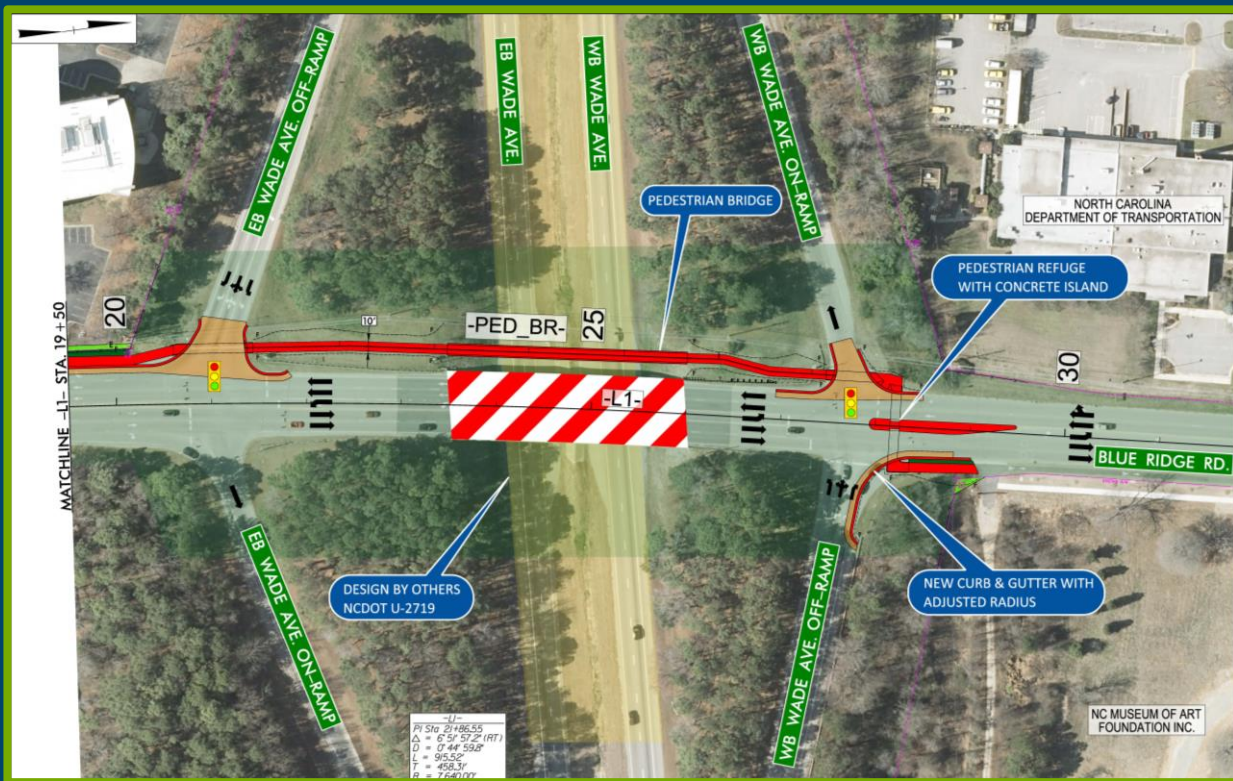
Proposed Typical Section



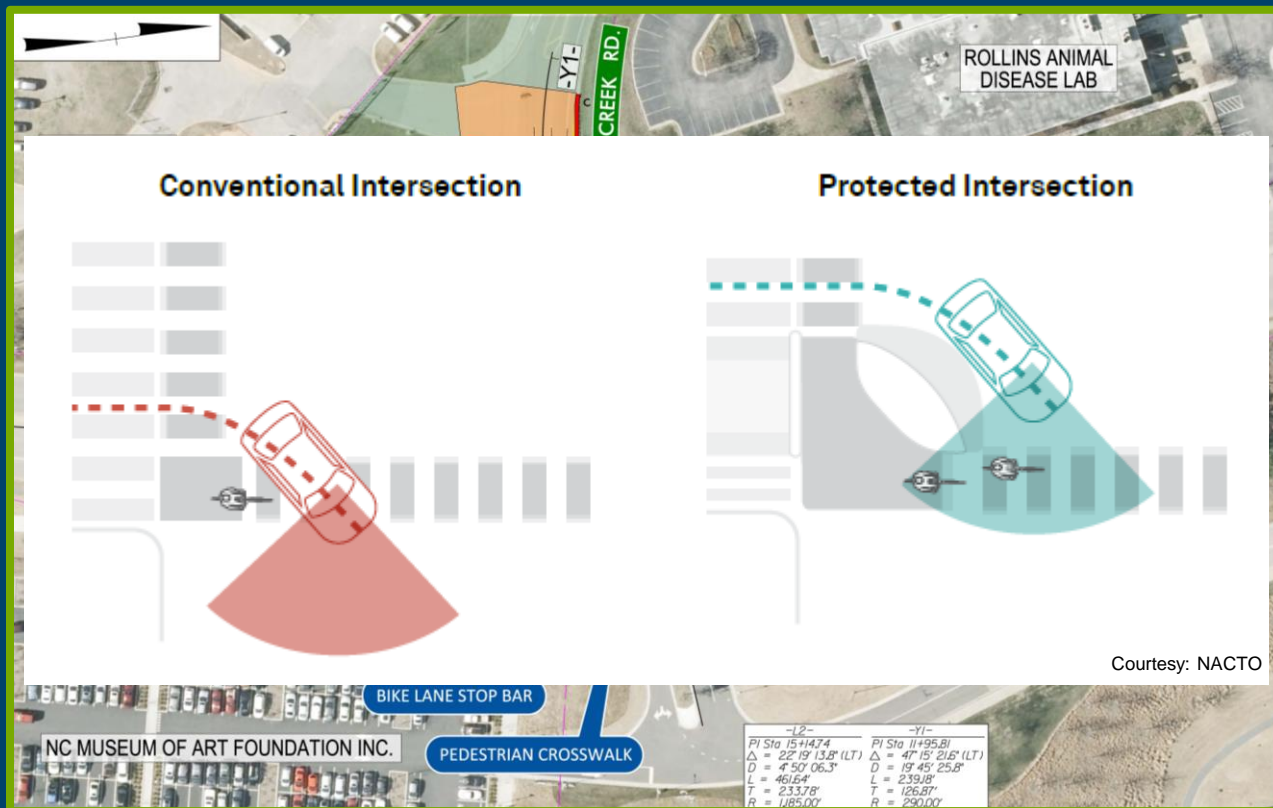
Project Overview



Project Overview



Project Overview



Project Improvements

10' Multi-Use Path & Pedestrian Refuge





Raleigh

Project Improvements

Pedestrian bridge over Wade Ave.



Pedestrian bridge viewed from eastbound Wade Ave. west of Blue Ridge Rd.



Night time rendering of pedestrian bridge

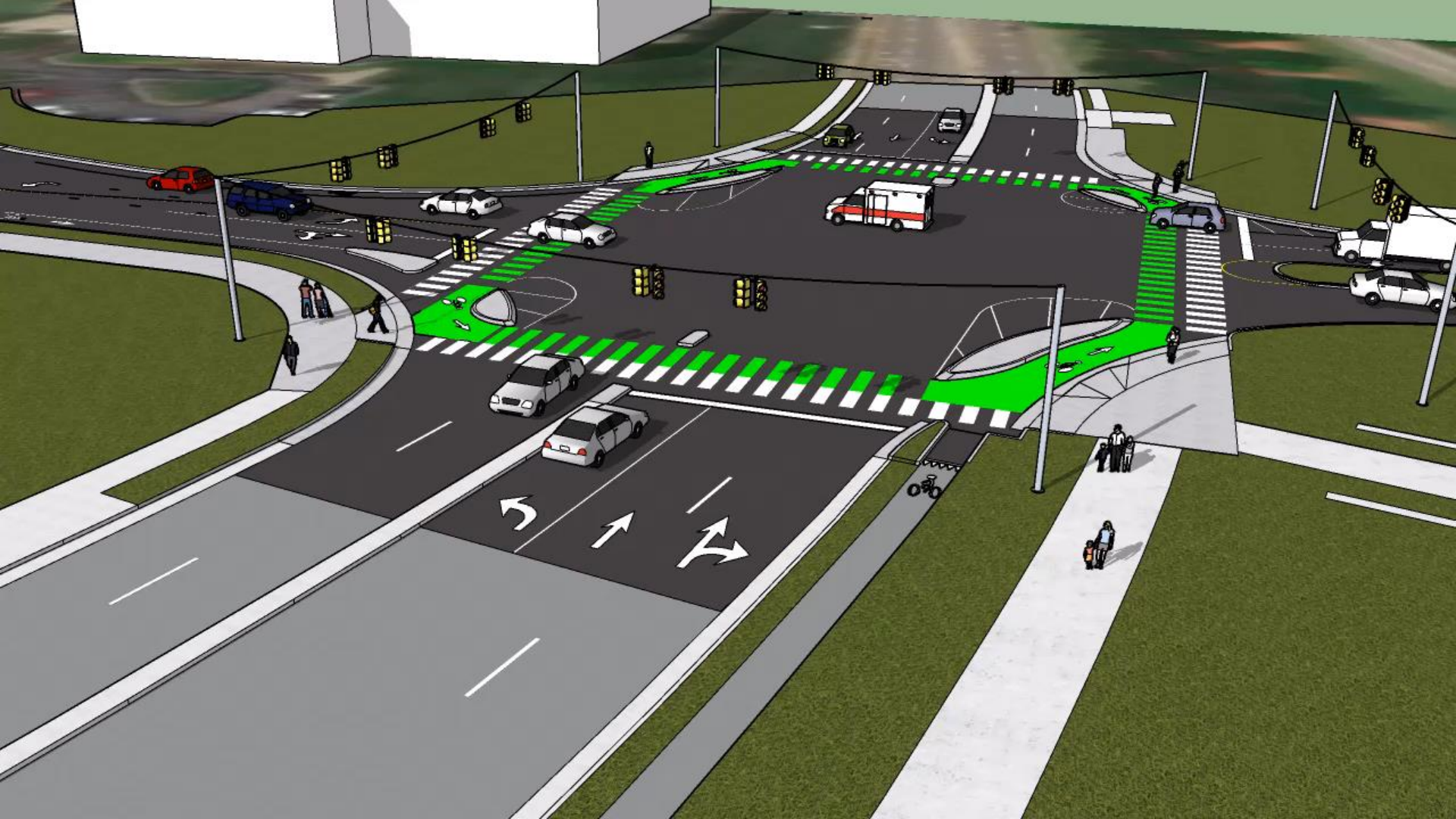




Project Improvements

Protected intersection at Reedy Creek Rd.

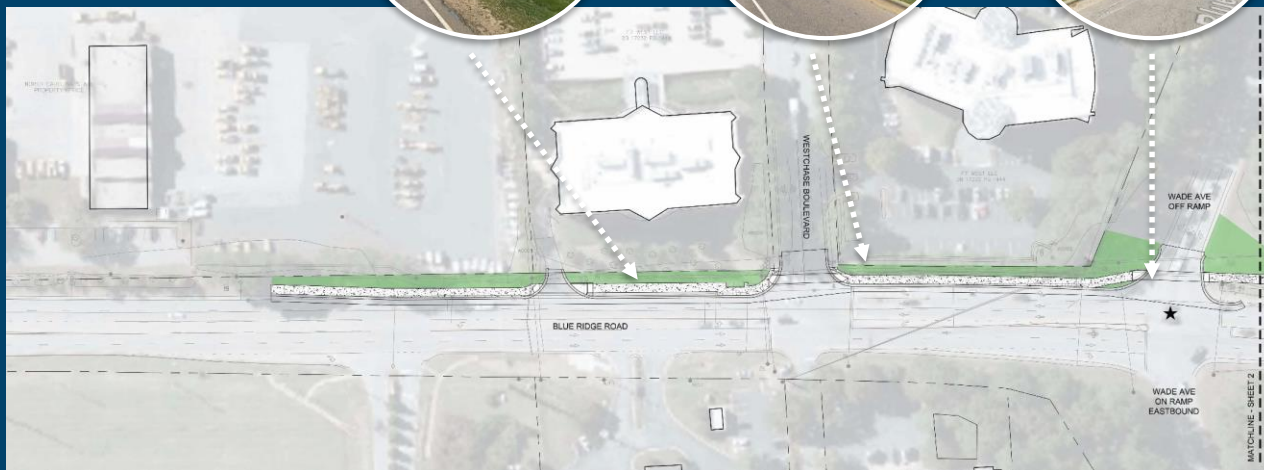




Project Improvements

Landscape Improvements

WESTCHASE BLVD



Project Improvements

Landscape Improvements

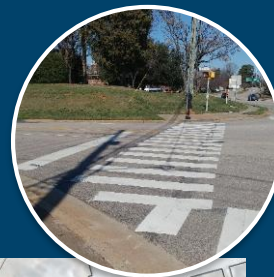
WADE AVE BRIDGE





Project Improvements

Landscape Improvements



REEDY CREEK RD



TIMMONS GROUP

AMT



Raleigh

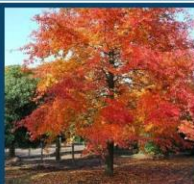
Project Improvements

Landscape Improvements

SHADE TREES



Quercus lyrata
Overcup Oak



Nyssa sylvatica 'Wildfire'
Black Gum

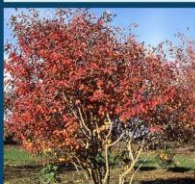


Ulmus americana 'Princeton'
American Elm



Zelkova serrata
Sawleaf Zelkova

FLOWERING TREES



Amelanchier x grandiflora
Autumn Brilliance® Serviceberry



Cercis canadensis
Eastern Redbud



Chionodoxa virginica
White Fringetrees



Cornus florida
Dogwood

GRASSES



Eragrostis spectabilis
Purple Lovegrass



Muhlenbergia capillaris
Pink Muhly Grass



Schizachyrium scoparium
Little Bluestem



Panicum virgatum 'Heavy Metal'
Blue Switch Grass

PLANTING QUALITIES

- NATIVE
- SEASONAL INTEREST
- LOW MAINTENANCE
- DROUGHT TOLERANT
- POLLINATOR FRIENDLY

PLANTING DESIGN INTENT

- CREATE SENSE OF ARRIVAL
- COMPLIMENT EXISTING PLANTINGS
- SCREEN OBJECTIONAL VIEWS


TIMMONS GROUP





Public Meetings

- First Public Meeting on February 3, 2020 at Laurel Hills Community Center
- Second Public Meeting anticipated for early Spring 2020
- City Council Public Hearing in late Spring 2020





Raleigh

Cost & Schedule

Estimated Project Cost:
\$4 Million including
Construction and Right of Way

We are Here Now



Note: Conceptual and subject to NCDOT review and approval





Raleigh

Project Contacts

City Project Manager

Beth Quinn, Ph.D., PE

919-996-3542

beth.quinn@raleighnc.gov

Consultant Project Manager

Nick Ramirez, PE

919-855-9989

nramirez@amtengineering.com



Questions?

Thank you for your participation.

