



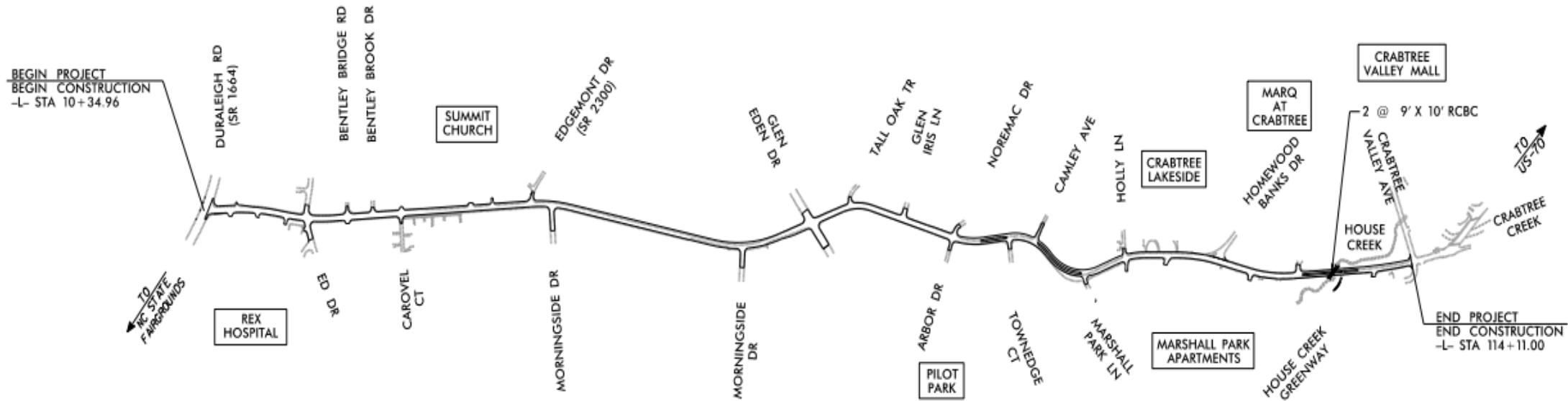
Kimley»Horn

Blue Ridge Road Widening Project

July 12, 2018

City Project No. ES-2018-04

Project Location



From Duraleigh Road (SR 1664) to Crabtree Valley Avenue

Project Purpose and Benefit

- Classification
- Complete Street
- Accommodate bicyclists and pedestrians
- Upgrade Transit Facilities
- Improve Safety
- Overhead Utility Relocation



Design Information

- Existing Traffic 7,500 vehicles per day
- Projected Traffic 12,700 vehicles per day
- Project Length 2.0 miles
- Posted Speed 35 miles per hour



Street Tree Options



Lagerstroemia x 'Natchez'
White Crape Myrtle



Lagerstroemia indica 'Tuscarora'
Tuscarora Crape Myrtle

Typical Median Plantings



Hemerocallis x Stella D'Oro
Day Lily



Liriope muscari 'Big Blue'
Big Blue Lilyturf



Rosa x Meiggili
Peach Drift Rose

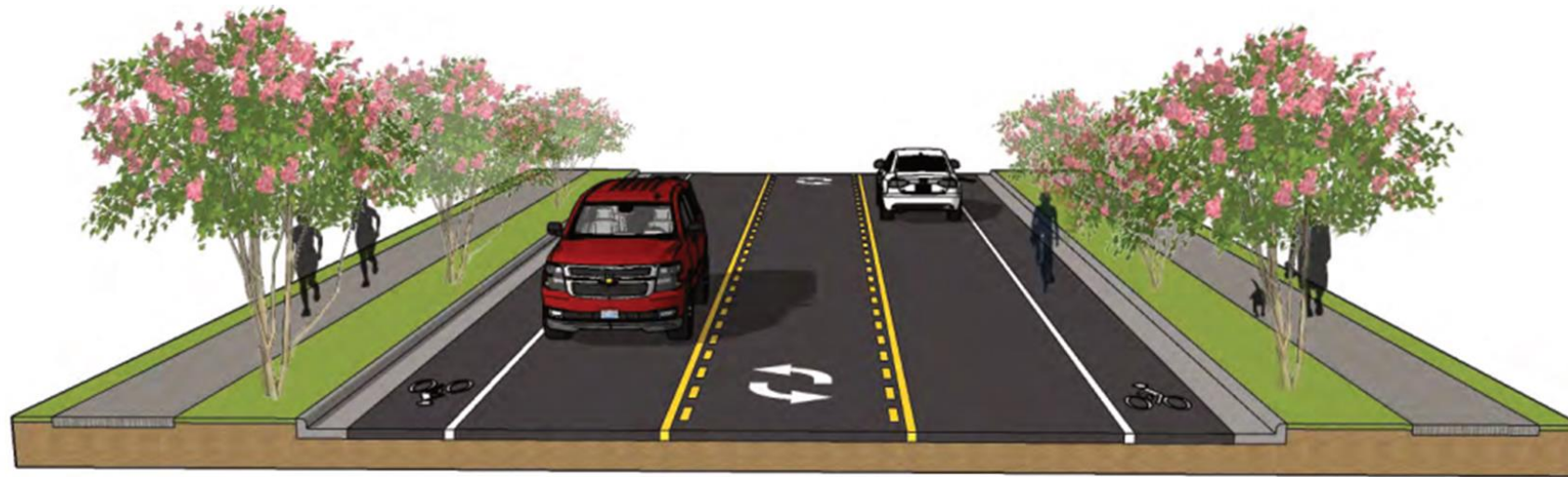


Juniperus horizontalis 'Blue Chip'
Creeping Juniper



Project Description

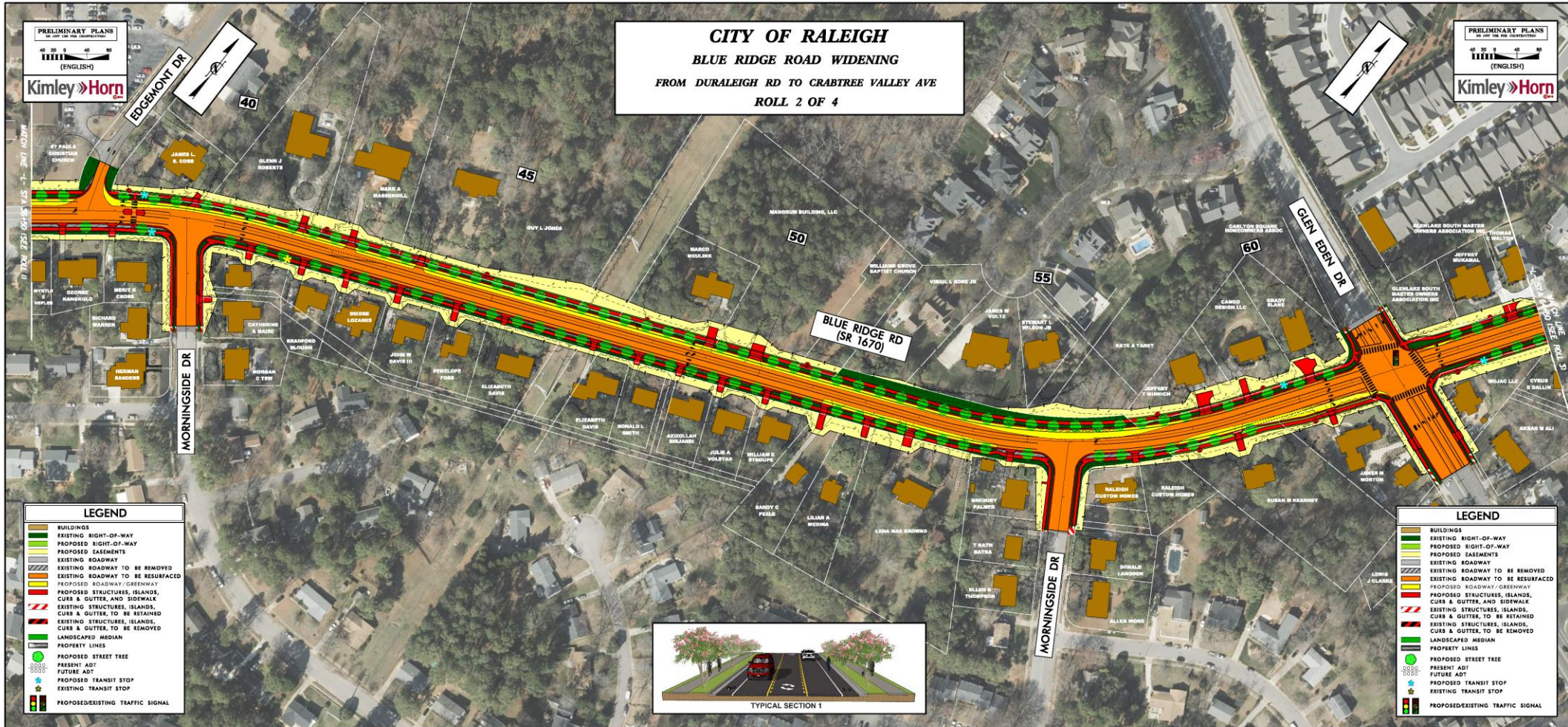
- Duraleigh Road to Glen Eden Drive
 - New curb and gutter, bike lanes and transit upgrades
 - New 6-foot sidewalks and 6-foot verge
- 1.0 mile length



TYPICAL SECTION 1

[illegible]

Edgemont Drive to Glen Eden Drive



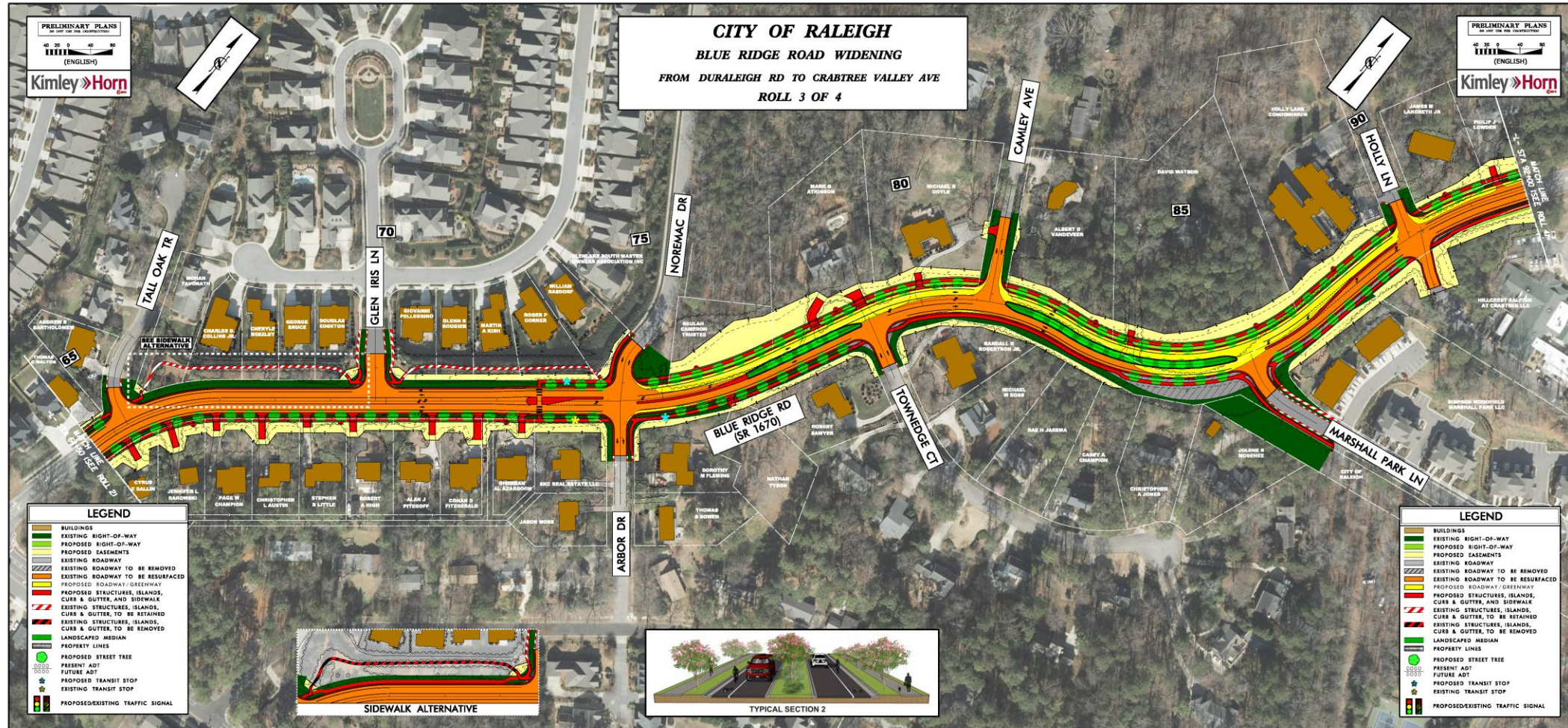
Project Description

- Glen Eden Drive to Crabtree Valley Avenue
 - New curb and gutter, bike lanes and transit upgrades
 - Landscaped medians and horizontal realignment to improve safety
 - New 6-foot sidewalks and 6-foot verge
 - 1.0 mile length

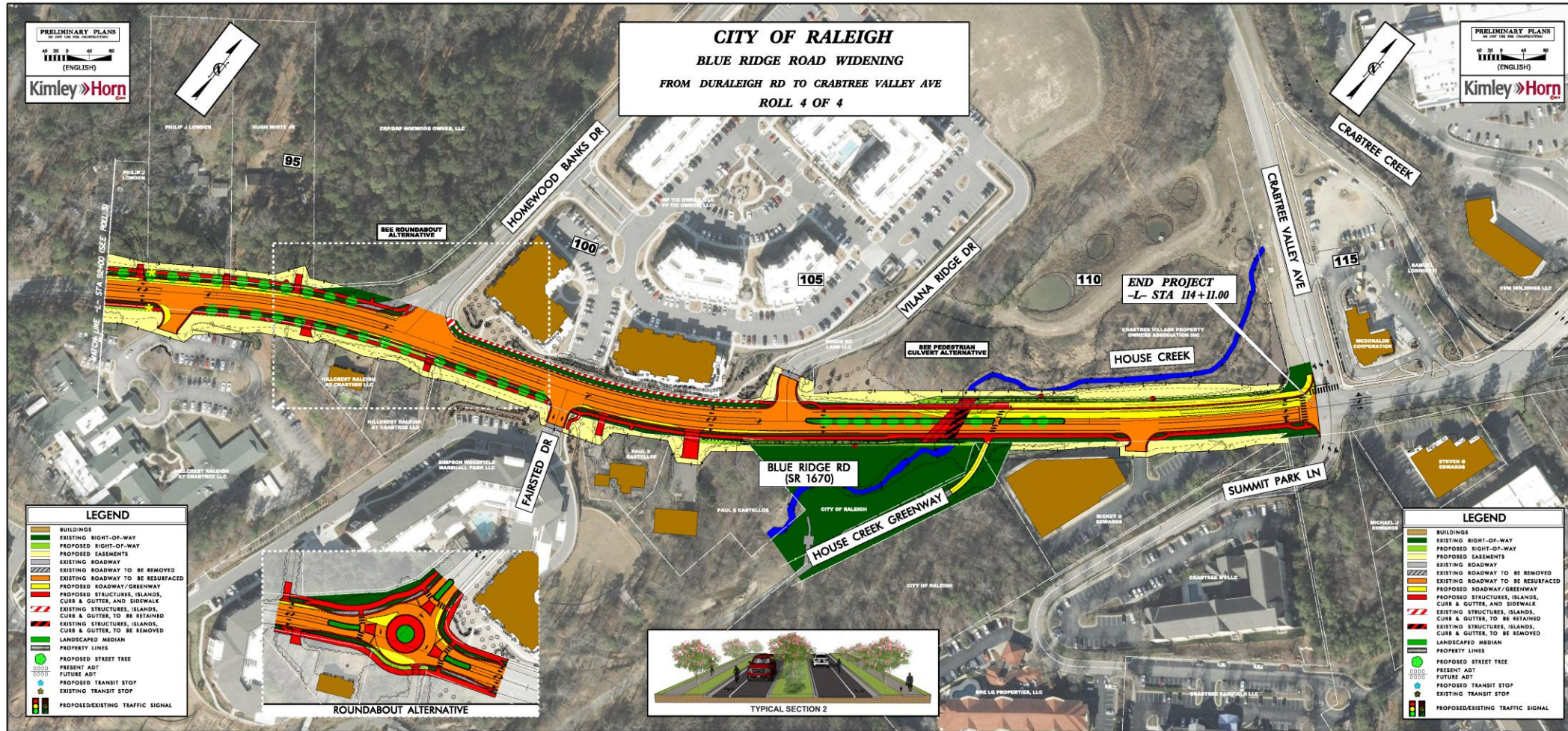


TYPICAL SECTION 2

Glen Eden Drive to Holly Lane



Holly Lane to Crabtree Valley Avenue



Public Input

COMMENT	RESPONSE
Limit impacts to adjacent townhomes on Bentley Bridge Road	Impacts are minimal at Bentley Bridge Road. No widening of Blue Ridge Road is proposed in this area but sidewalk and curb ramps will be upgraded.
Retain trees and utility boxes along Glenlake Community (from Tall Oak Trail to Noremac Drive)	Existing oak trees will be preserved at this location. However, there will likely be utility impacts north of Noremac Drive due to new sidewalk installation.

Public Input

COMMENT	RESPONSE
Concern about increased traffic on Eden Croft and Arbor Drive during construction	Blue Ridge will remain open to traffic during construction in an effort to limit off-site detours. Improvements are proposed at the Glen Eden Drive signal.
Install traffic signal at Townedge Court intersection	Traffic volumes do not warrant a new signal at this location. However, a raised median will be installed on Blue Ridge south of Townedge to improve safety.

Project Schedule

Date	Description
Fall 2018	65% Plans Submitted
Fall 2018	Second Public Meeting
Winter 2019	Begin Right-of-Way and Easement Acquisitions
Summer 2019	Final Plans Submitted
Fall 2019	Complete Right-of-Way and Easement Acquisitions
Winter 2020	Complete Utility Relocations
Winter 2020	Advertise Project for Construction
Spring 2020	Begin Construction

Project Website

The screenshot displays the City of Raleigh website with a blue header and a dark navigation bar. The main content area features a sidebar on the left with links for Assessment Liens, Business Services, Projects, and Resources. The central section is titled "Blue Ridge Road Widening Project" and includes a progress bar with stages: Planning, Design (active), Construction, and Completed. Below the progress bar, project details such as Type (Road Widening), Budget (12,000,000), and Team members are listed. A "Current Activity" section highlights a public meeting for preliminary plans, including the date, time, and location. The right sidebar contains links for Street & Sidewalk Projects, Departments & Divisions, and Contacts.

City of Raleigh

Maps Directory Calendar Subscriptions

Search

Departments Arts & Parks Services Government Business & Development Community Projects Public Safety Sustainability

Assessment Liens

By Real Estate Tax ID

By Property Owner

By Street Address

Stormwater Assessment Liens

Assessment Information

Business Services

Doing Business with the City

Become a City Supplier

Bids & RFPs/RFOs

Business Assistance

Projects

Transportation Project Map

Parks & Greenway

Street & Sidewalk

Stormwater Management

Construction Management

40/440 Fortify

Resources

Standard Detail Drawings

Mud & Erosion Inspections

Public Utilities Handbook

Blue Ridge Road Widening Project

Last updated Jun. 20, 2018 - 1:29 pm

Planning Design Construction Completed

Type Road Widening

Budget 12,000,000

Team

- Roadway Design and Construction (Lead)
- Kimley Horn (Design Consultant)

Current Activity

Updated June 20

Public Meeting: Preliminary Plans

When: Thursday, July 12

Time: 6 p.m. - 7:30 p.m.

Place: Laurel Hills Community Center
3808 Edwards Mill Road
Raleigh NC 27612

The City of Raleigh and our engineering design consultant, Kimley-Horn & Associates, have completed the preliminary plans for the project. The public meeting will begin with a short presentation after which the design consultant and City staff will be on hand to answer questions and receive comments from the surrounding community.

Street & Sidewalk Projects

Current Projects

Requesting Street & Sidewalk Improvements

Departments & Divisions

Roadway Design And Construction

Engineering Services

Contacts

Reuben Moore, Project Manager

Roadway Design & Construction Comment Form

Keyword Search: Blue Ridge Road

<https://www.raleighnc.gov/projects/content/PWksDesignConst/Articles/BlueRidgeRoadWidening.html>

Project Contacts

Reuben Moore, P.E.

City of Raleigh

Engineering Services Department

222 West Hargett Street

Raleigh, NC 27601

(919) 996-4171

reuben.moore@raleighnc.gov

Jeff Moore, P.E.

Kimley-Horn

421 Fayetteville Street

Suite 600

Raleigh, NC 27601

(919) 677-2175

jeff.moore@kimley-horn.com



Kimley»Horn