



# Tonight's Agenda

**6:00 – 6:30 PM \_\_\_\_\_ Open Forum**

**6:30 – 6:45 PM \_\_\_\_\_ Project Presentation**

**6:45 – 7:00 PM \_\_\_\_\_ Question & Answer**

**7:00 – 7:30 PM \_\_\_\_\_ Open Forum**

Engineering Services

# Carolina Pines Avenue Street Improvements

Roadway Design & Construction  
H.W. Lochner, Inc.



Raleigh





Raleigh

# Project Location

From Lake Wheeler Rd.  
to S. Saunders St.

Carolina Pines Park &  
Community Center





# Existing Conditions

- 2-lane rural section
- Rolling terrain
- Residential development
- City transit line
- Public/Private utilities
- RR crossing



# Proposed Design – Typical Section

2-lane curb & gutter, 6' sidewalk, and 10' multi-use path





Raleigh

# Project Purpose

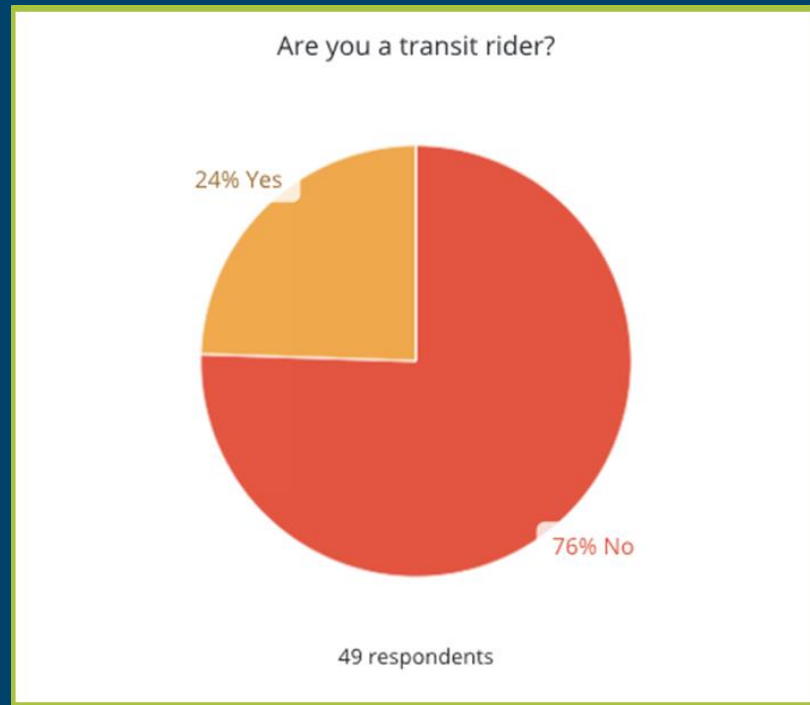
- Improve mobility and connectivity
  - Pedestrians
  - Bicycles
  - Vehicles
- Improve safety
  - Reduce speeds





# Pre-Design Public Meeting - Results

*76 percent of respondents were non-transit riders.*



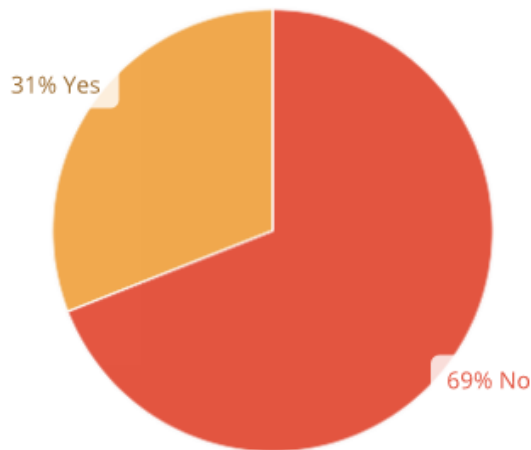


Raleigh

# Pre-Design Public Meeting - Results

*69 percent of respondents  
favored a roundabout at  
Lake Wheeler Road.*

Do you prefer a traffic signal over a roundabout at Lake Wheeler Road?



42 respondents



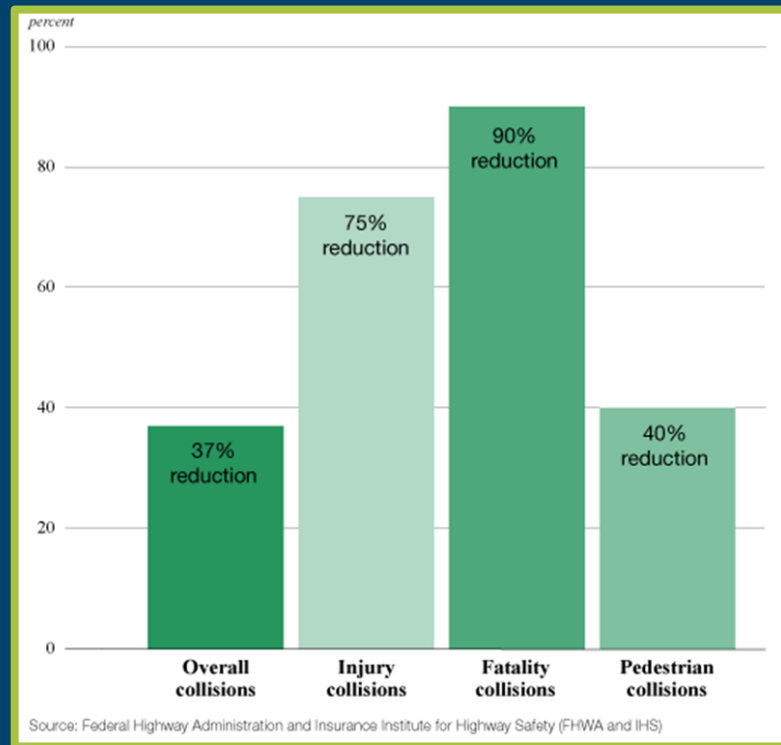


Raleigh

# Pre-Design Public Meeting - Results

*Roundabout Safety vs  
Conventional  
Intersections*

*Source: FHWA and IIHS*

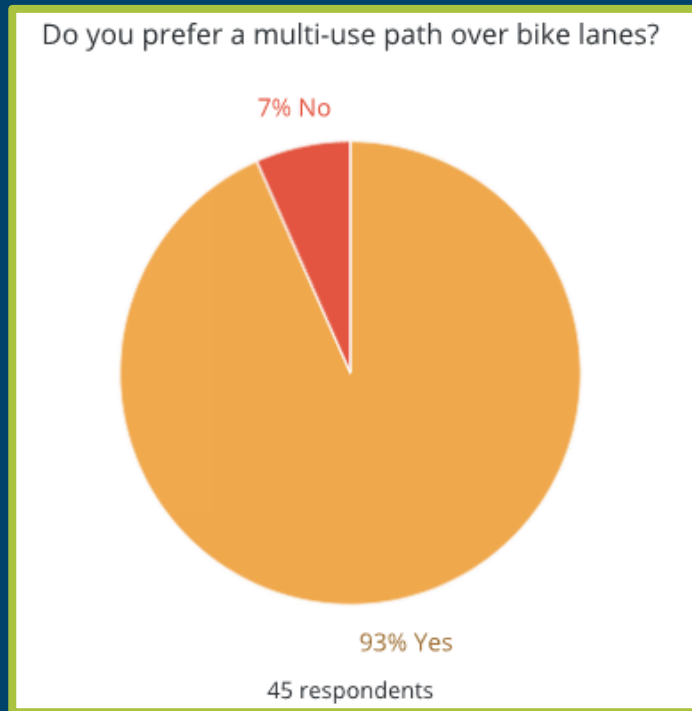




Raleigh

# Pre-Design Public Meeting - Results

*93 percent of respondents  
favored a multi use path.*



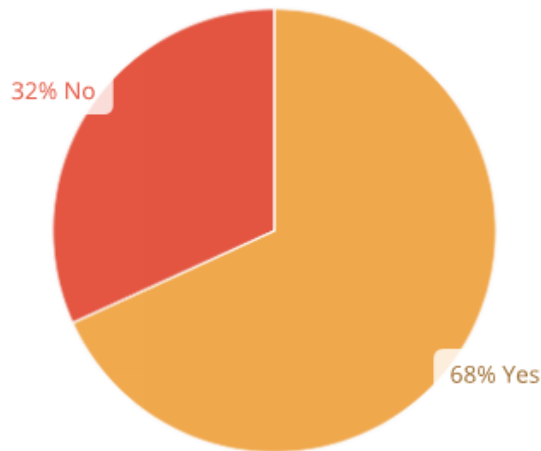


Raleigh

# Pre-Design Public Meeting - Results

*68 percent of respondents favored mini-roundabouts to help slow traffic along the corridor.*

Are you in favor of mini-roundabouts as a traffic calming measure?



44 respondents



Raleigh

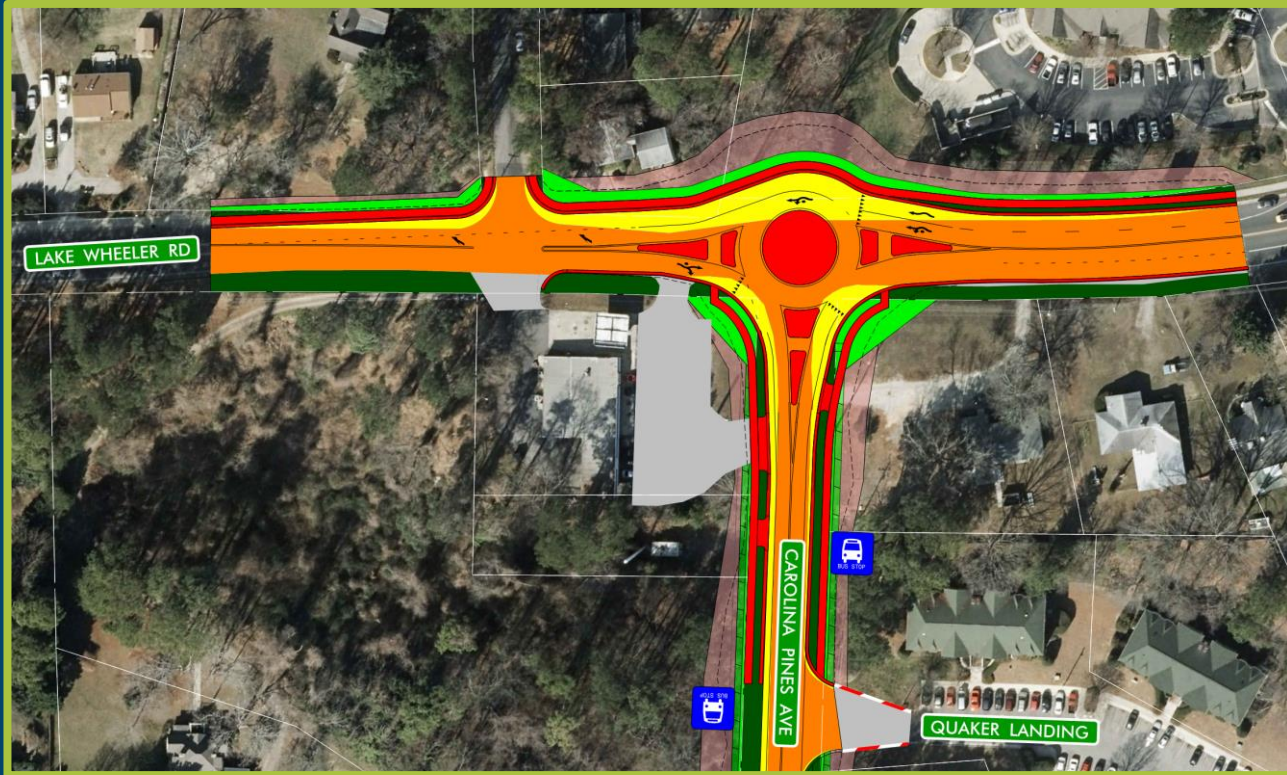
# Pre-Design Public Meeting - Results

*Based on public comments we plan to expand the scope to include the end of Henslowe Dr.*



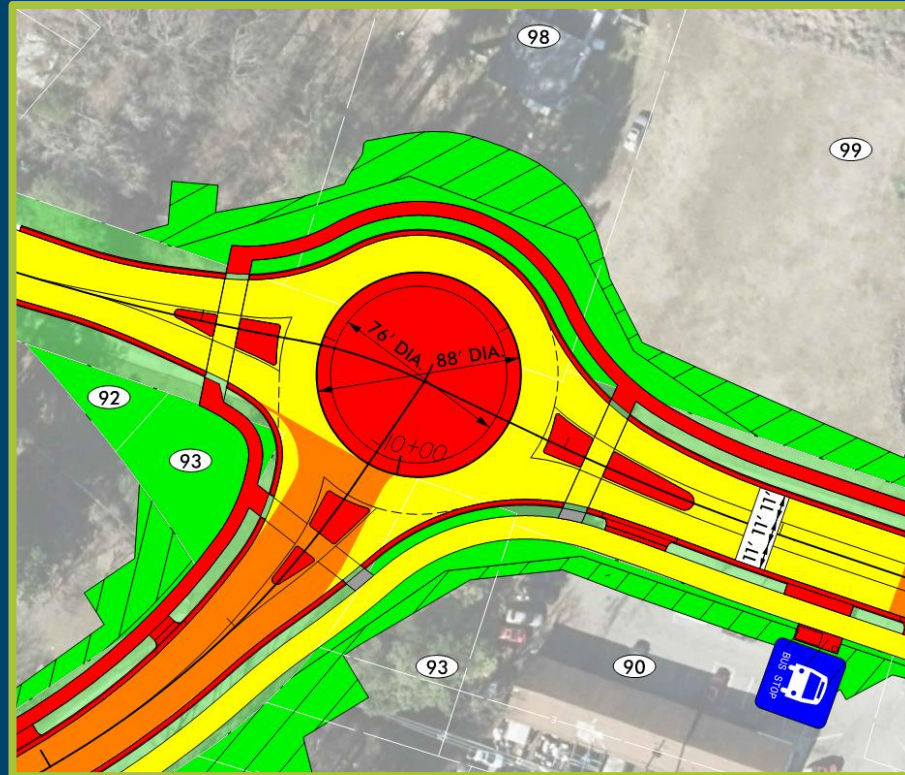
**LOCHNER**

# Design Elements - Roundabouts





# Design Elements - Roundabouts



# Design Elements – Traffic Calming

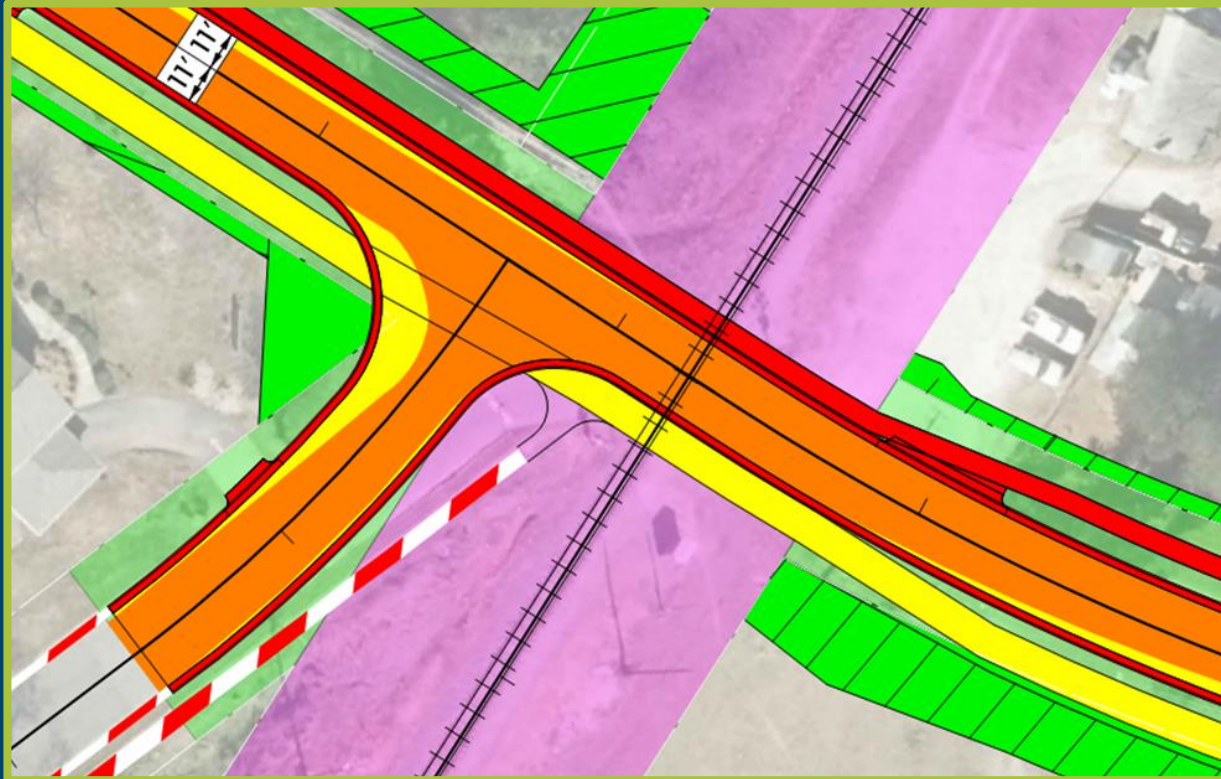


# Design Elements – Traffic Calming





# Design Elements – RR Crossing

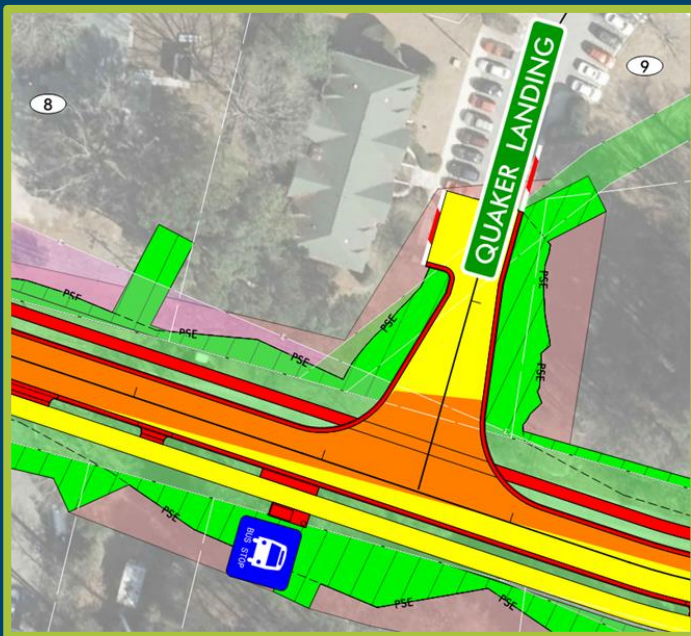


# Design Elements – RR Crossing





# Design Elements – Transit Stops



# Design Elements – Boardwalk





Raleigh

# Design Elements – Boardwalk

*The design includes a boardwalk over a section of Carolina Pines Lake*



**LOCHNER**



# Public Engagement

- Pre-Design Meeting (Spring 2019)
- BPAC Meeting (Spring 2019)
- Preliminary (25%) Design Meeting (Fall 2019)
- Advanced (65%) Design Meeting (Spring 2020)





Raleigh

# Project Cost

- Construction - \$ 7,650,000
- Right-of-Way - \$ 2,950,000
- **TOTAL \$ 10,600,000**





# Project Schedule

Date	Description
Fall 2019	25% Public Meeting
Winter 2020	65% Plan Development
Spring 2020	65% Public Meeting; Begin ROW Acquisition
Fall 2020	Complete ROW Acquisition
Fall 2020	Complete Final Construction Plans & Bid Docs.
Winter 2021	Begin Construction (2-year Duration)

# Questions?

