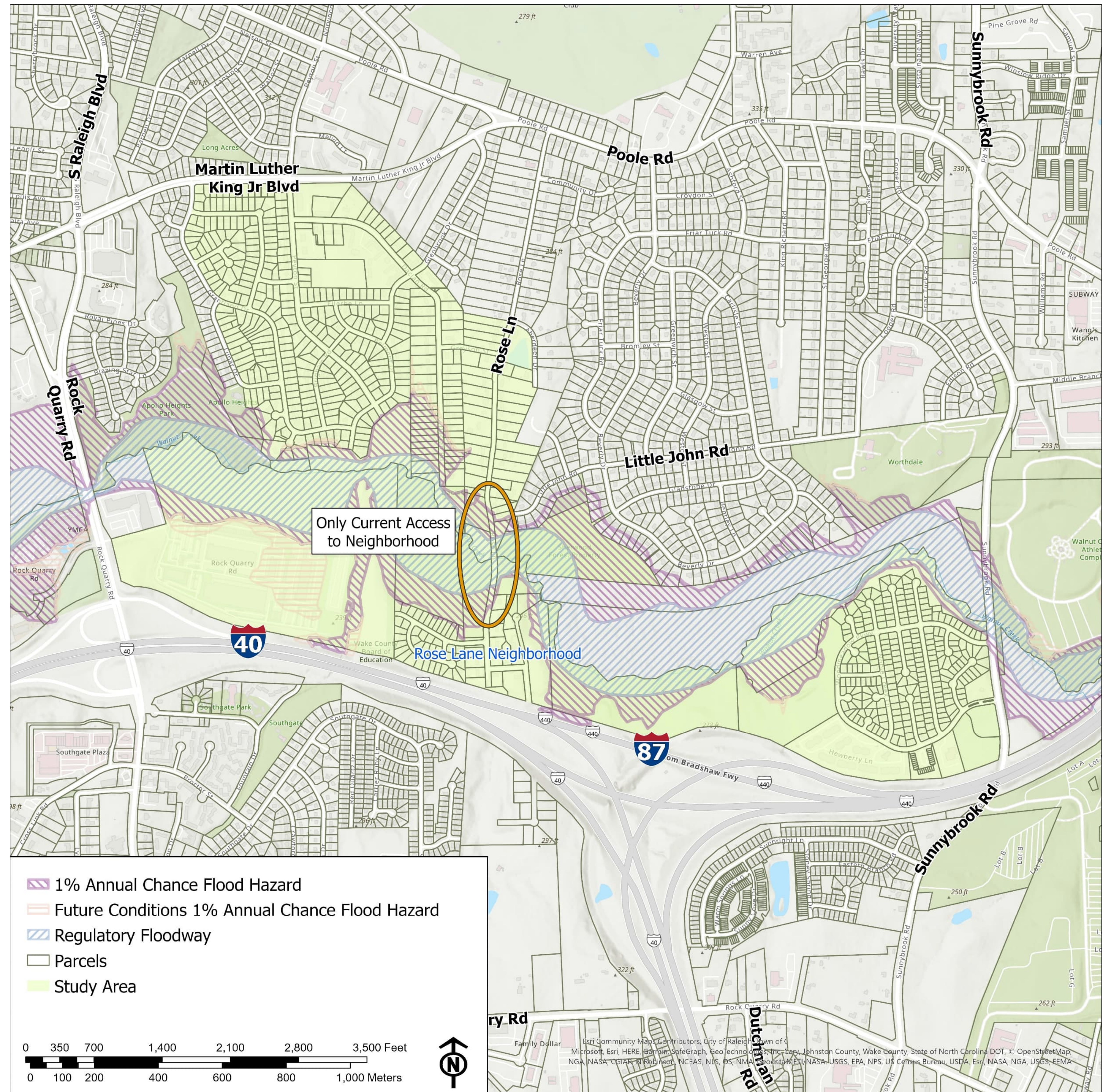


Goals and Objectives of the Study

The City of Raleigh Stormwater has undertaken this study of the stormwater impacts in the Rose Lane Community between I-40 and Poole Road. This area has seen frequent flooding from Walnut Creek that overtops Rose Lane in minor storm events, cutting off access to the community. The goals of this study are to:

1. Identify additional improved access points providing a way in and out of the community during storm events.
2. Model the access points (Alternatives) to determine effectiveness and resiliency performance in storm events.
3. Evaluate the costs and benefits of each alternative to determine which alternative will be selected for final design and construction implementation.

For more information on this project, visit raleighnc.gov and search "Rose Lane" or scan the code here:



Project Study Area