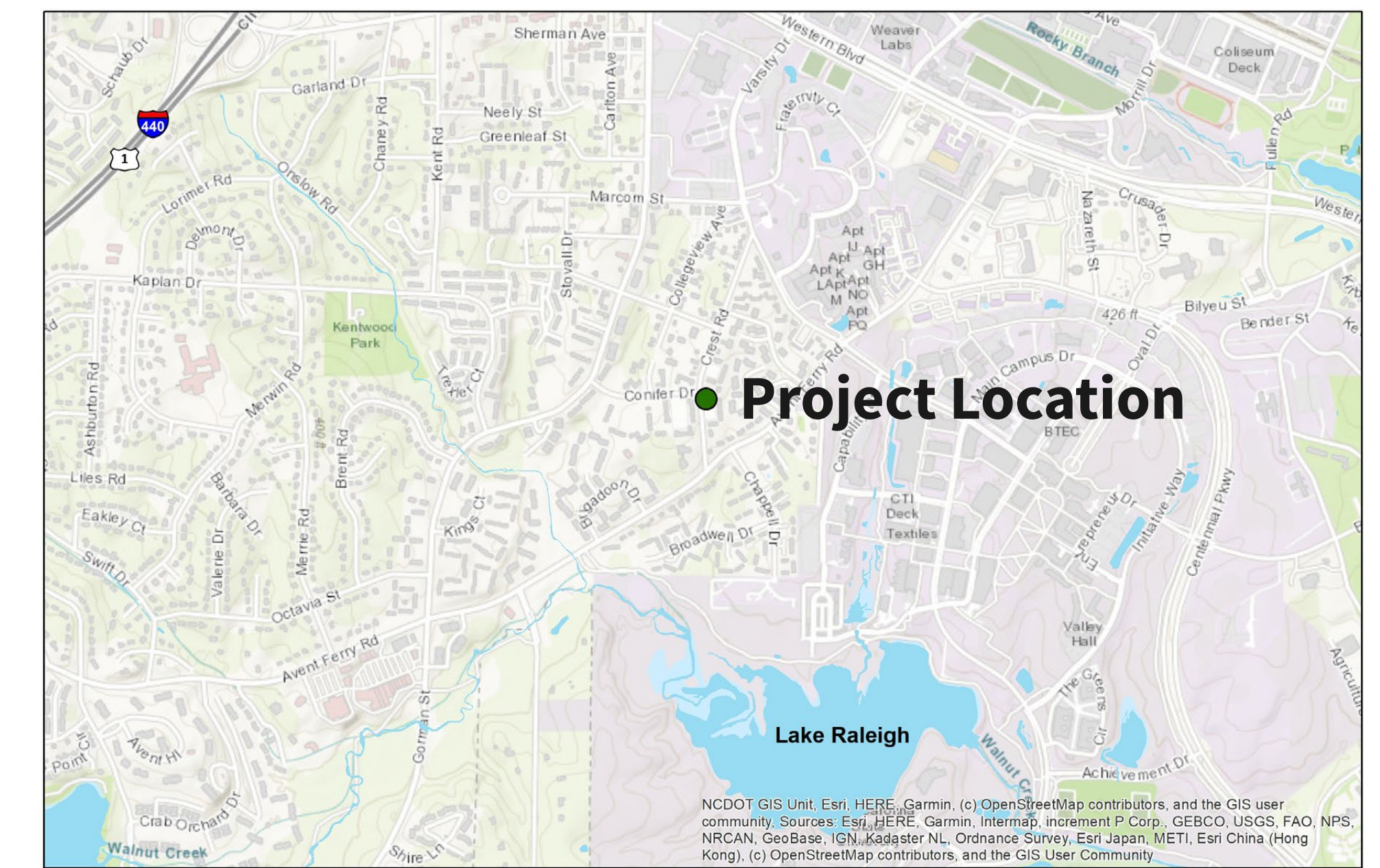
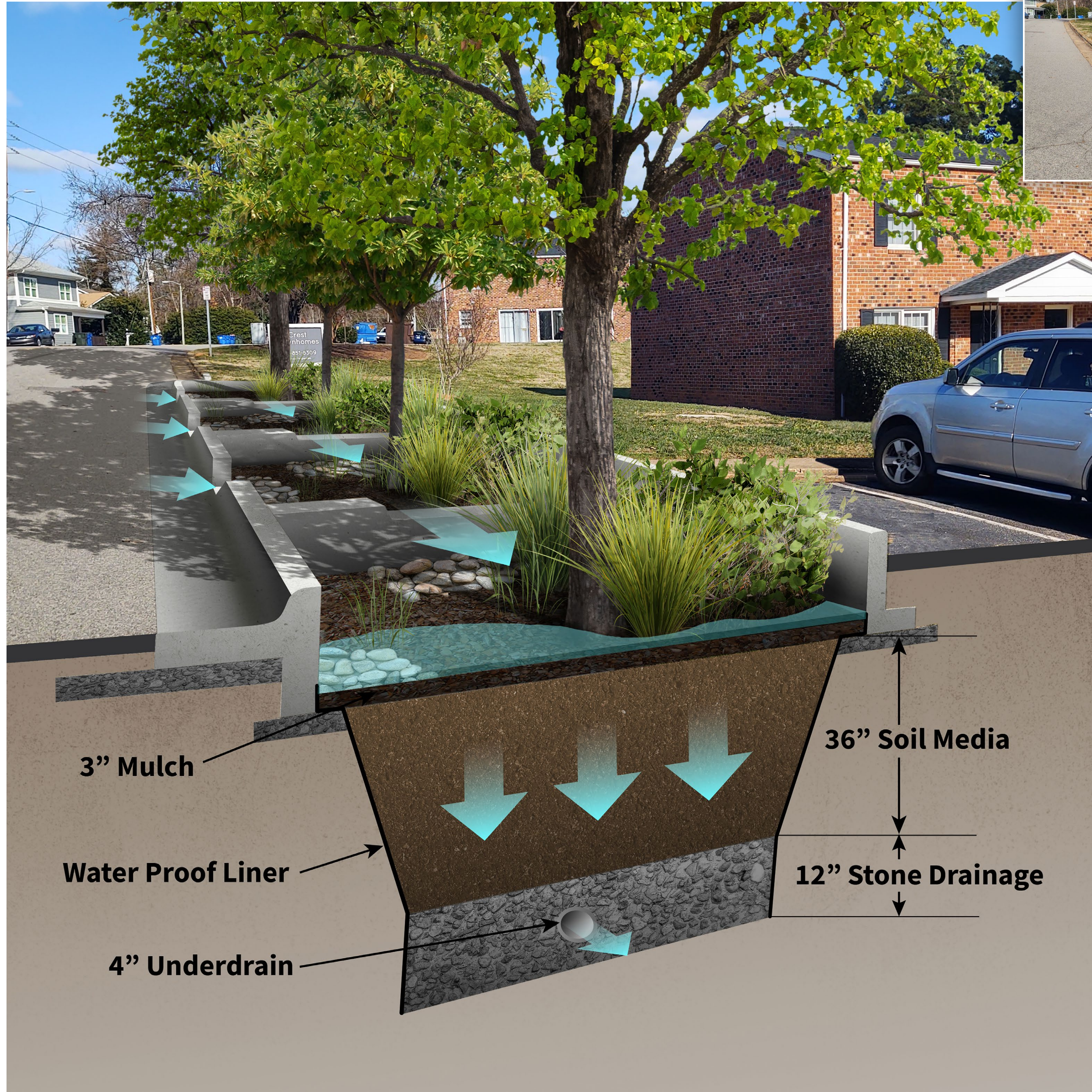


Crest Road Bioretention



ATTRIBUTE	DESCRIPTION
Nearest Address	1713 Crest Road
GSI Type (Size)	Bioretention (1,200 ft ²)
Evening Heat Index (July 2021)	85 °F
Reasons for Selection	<ul style="list-style-type: none"> ✓ Residential area ✓ Limited tree canopy ✓ Available space

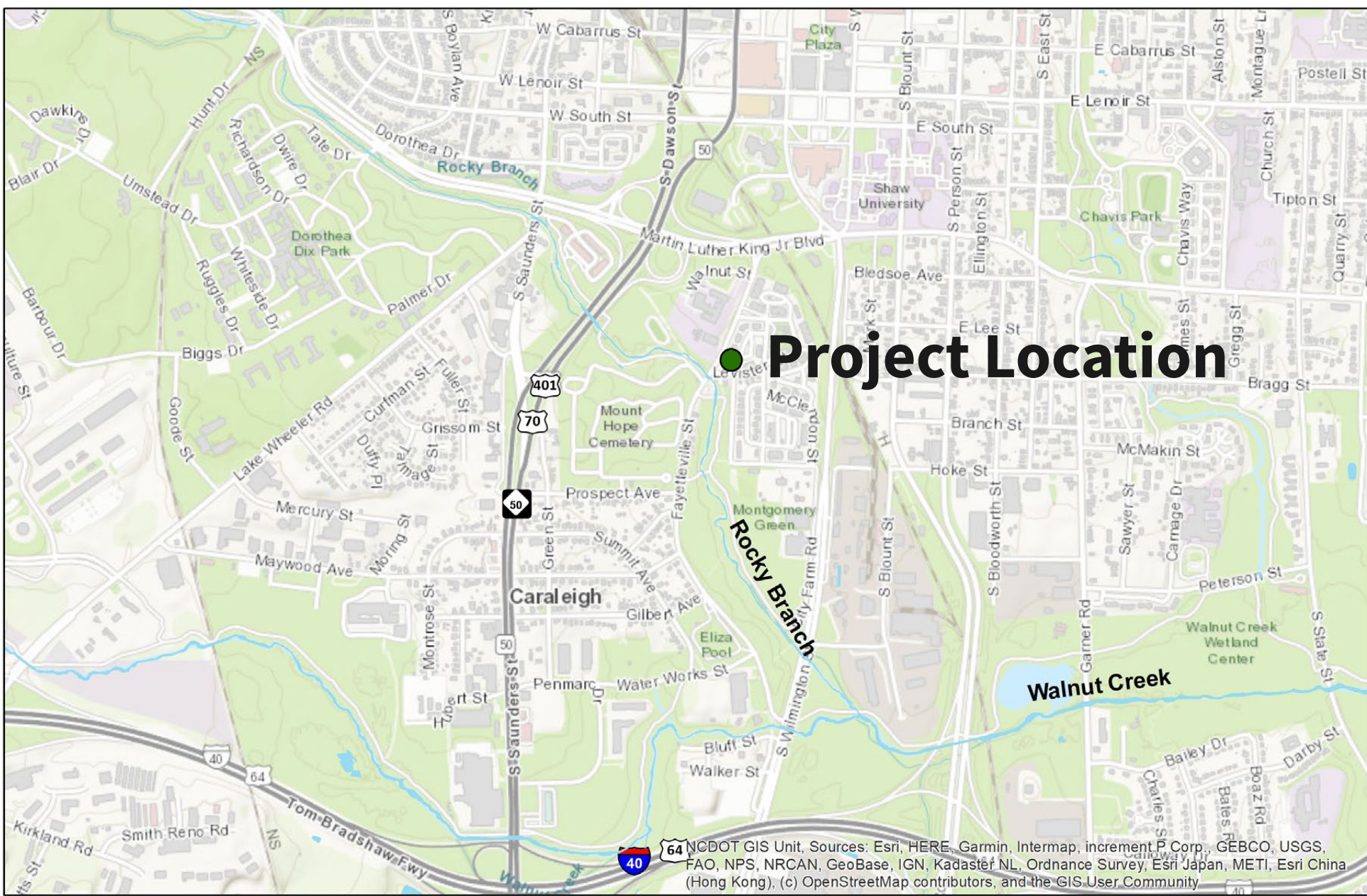
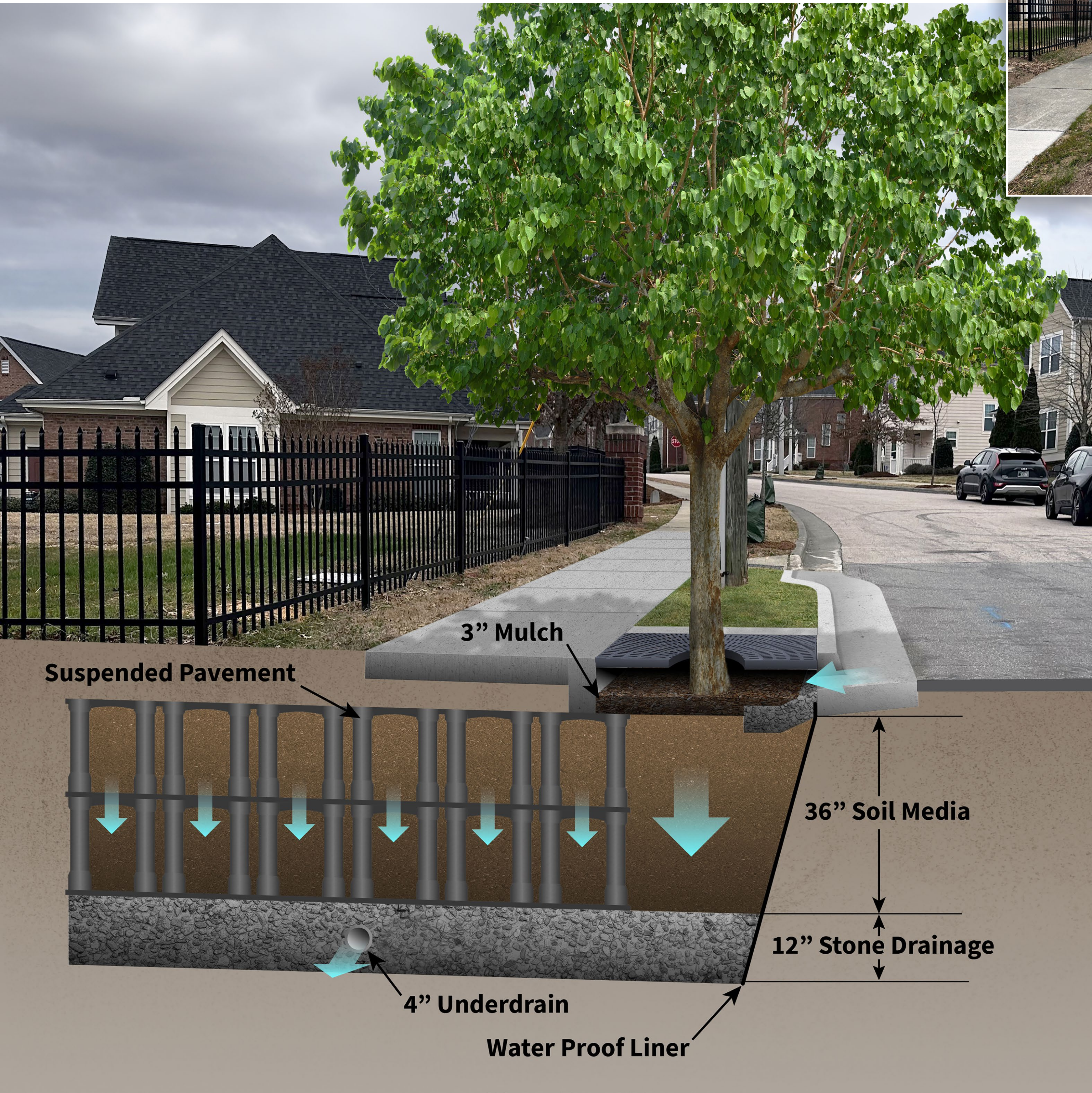
Project Benefits

Improve Water Quality | This green stormwater practice will keep pollutants, including nitrogen and phosphorus, from reaching Lake Raleigh and Walnut Creek.

Reduce Urban Heat | Shade from the trees and evaporation by other plants in the bioretention will cool the surrounding area.

Slow Traffic | Bioretention cells with curb bump-outs can help reduce vehicle speed on the roadway.

Levister Court Tree Well

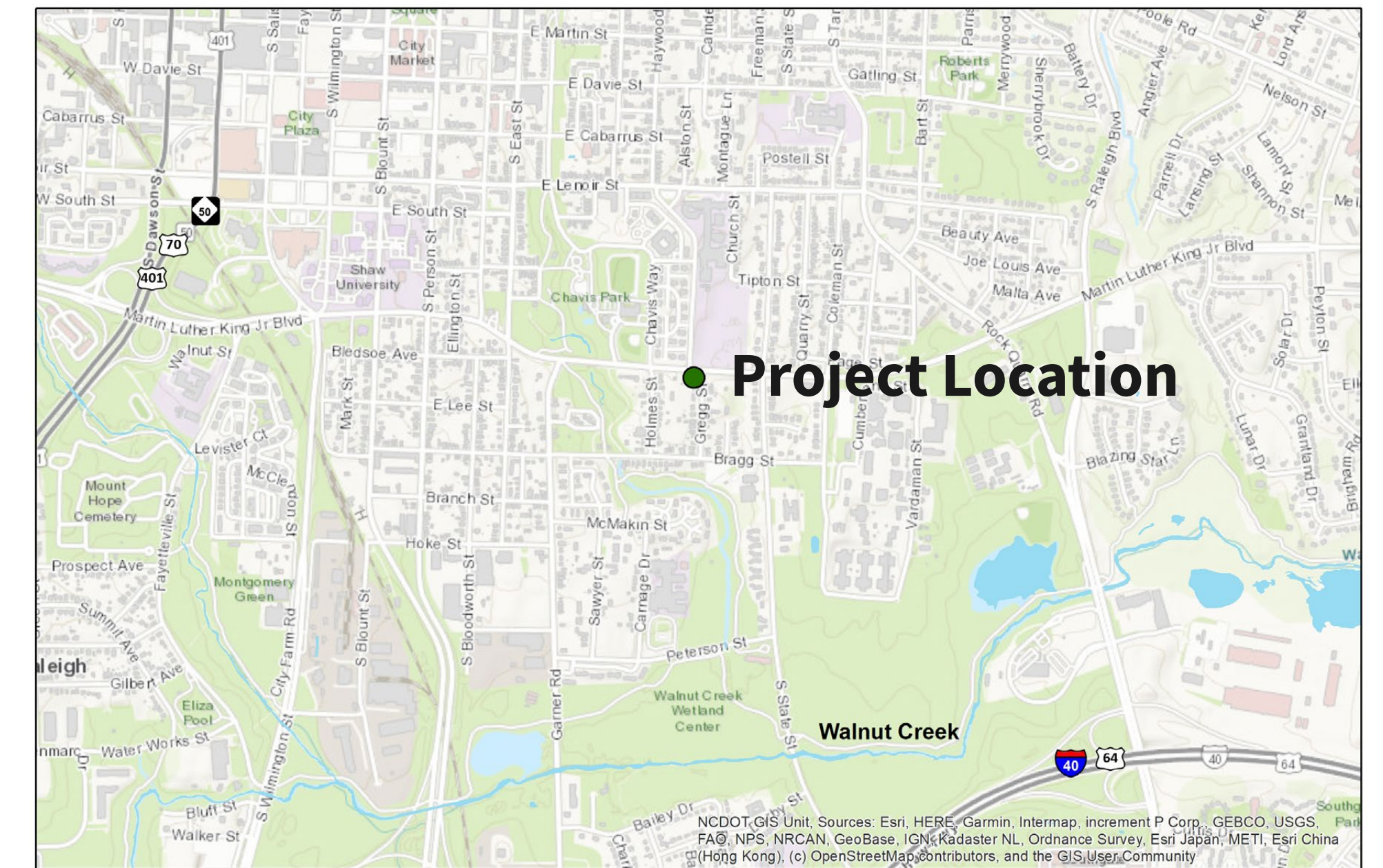
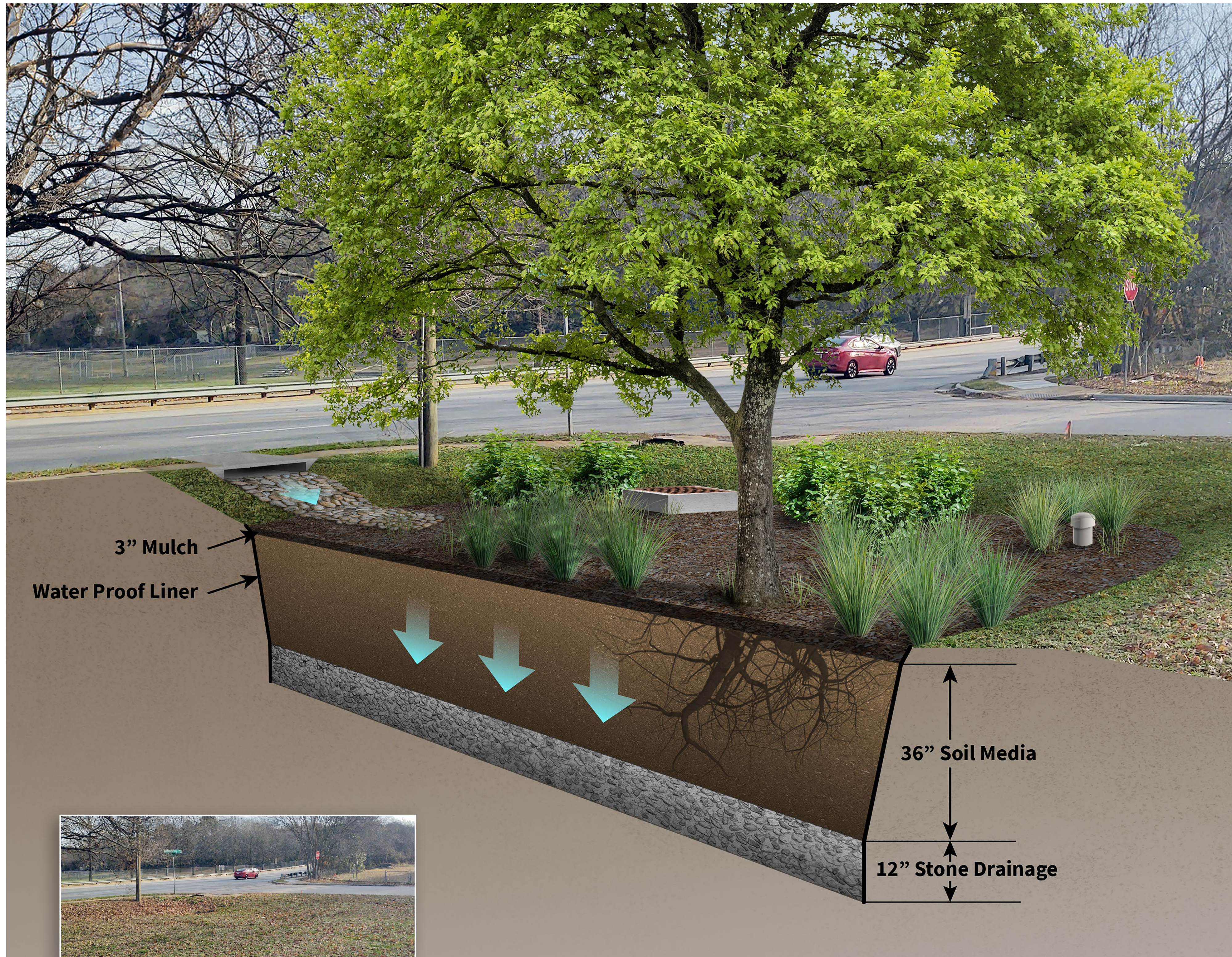


ATTRIBUTE	DESCRIPTION
Nearest Address	98 Levister Court
GSI Type (Size)	Tree Well with Suspended Pavement System (500 ft ²)
Evening Heat Index (July 2021)	84 °F
Reasons for Selection	<ul style="list-style-type: none"> ✓ Residential area ✓ Limited tree canopy ✓ Proximity to bus stop, school, and greenway

Project Benefits

- Improve Water Quality** | This green stormwater practice will keep pollutants, including nitrogen and phosphorus, from reaching nearby Rocky Branch.
- Reduce Urban Heat** | Suspended pavement systems provide tree roots room to grow and expand, sustaining tree health. Shade from the tree will cool the surrounding area.
- Slow Traffic** | Curb bump-outs can help reduce vehicle speed on the roadway.
- Public Education** | Located near a greenway, school, bus stop, and the Walnut Terrace community, this green stormwater offers an opportunity to educate passers-by about the function and benefits of green infrastructure.

Gregg Street Bioretention



ATTRIBUTE	DESCRIPTION
Nearest Address	1000 Gregg Street
GSI Type (Size)	Bioretention System (700 ft ²)
Evening Heat Index (July 2021)	86 °F
Reasons for Selection	<ul style="list-style-type: none"> ✓ Residential area ✓ Limited tree canopy ✓ Adjacency to Martin Luther King Jr Blvd ✓ Available area on City-owned parcel

Project Benefits

Improve Water Quality | This green stormwater practice will keep pollutants, including nitrogen and phosphorus, from reaching Walnut Creek.

Reduce Urban Heat | Shade from the trees and evaporation by other plants in the bioretention will cool the surrounding area.

Public Education | Located near the school and Chavis Park, this green stormwater offers an opportunity to educate passers-by about the function and benefits of green infrastructure.

Vote for Your Preferred Native Plant

INSTRUCTIONS: Choose your top three and mark them with a sticker.

KEY - NATURAL BENEFITS



CATEGORY: NATIVE SHRUBS - IMPROVE AIR QUALITY



Photo: Famarin

Virginia Sweetspire 'Little Henry'

Itea virginica 'Little Henry'

ABOUT THIS PLANT:

- White flowers in spring
- Fall color

NATURAL BENEFITS:



PLACE STICKER HERE:



Photo: David J. Stang

Inkberry Holly 'Strongbox'

Ilex glabra 'Strongbox'

ABOUT THIS PLANT:

- Evergreen leaves
- Black berries
- No thorns

NATURAL BENEFITS:



PLACE STICKER HERE:



Photo: Douglas Goldman

New Jersey Tea

Ceanothus americanus

ABOUT THIS PLANT:

- White flowers in spring
- Fall color

NATURAL BENEFITS:



PLACE STICKER HERE:



Photo: Ryan Hochett

Winterberry 'Red Sprite'

Ilex verticillata 'Red Sprite'

ABOUT THIS PLANT:

- Bright red berries in winter
- No thorns

NATURAL BENEFITS:



PLACE STICKER HERE:



Photo: Krzysztof Ziamek

Yaupon Holly 'Dwarf'

Ilex vomitoria 'Nana'

ABOUT THIS PLANT:

- Evergreen leaves
- Red Berries
- No thorns

NATURAL BENEFITS:



PLACE STICKER HERE:



Photo: David J. Stang

Red Chokeberry

Aronia arbutifolia

ABOUT THIS PLANT:

- White flowers
- Red berries

NATURAL BENEFITS:



PLACE STICKER HERE:

Vote for Your Preferred Native Plant

INSTRUCTIONS: Choose your top three and mark them with a sticker.

KEY - NATURAL BENEFITS



CATEGORY: NATIVE GRASSES - KEEP THE GROUND COOL



Photo: USGS

River Oats
Chasmanthium latifolium

ABOUT THIS PLANT:

- Attractive foliage and seed heads
- Year round interest

NATURAL BENEFITS:



PLACE STICKER HERE:



Photo: WCarner

Common Rush
Juncus effusus

ABOUT THIS PLANT:

- Evergreen leaves
- Compact shape

NATURAL BENEFITS:



PLACE STICKER HERE:



Photo: Krzysztof Ziarnek

Little Bluestem
Schizachyrium scoparium

ABOUT THIS PLANT:

- Attractive summer leaves
- Reddish fall color

NATURAL BENEFITS:



PLACE STICKER HERE:



Photo: David J. Stang

Purple Lovegrass
Eragrostis spectabilis

ABOUT THIS PLANT:

- Purple blooms in fall

NATURAL BENEFITS:



PLACE STICKER HERE:



Photo: Jim Robbins

Pink Muhly Grass
Muhlenbergia capillaris

ABOUT THIS PLANT:

- Drought tolerant
- Pink blooms in fall

NATURAL BENEFITS:



PLACE STICKER HERE:



Photo: Joshua Mayer

Prairie Dropseed
Sporobolus heterolepis

ABOUT THIS PLANT:

- Adaptable
- Grows in flowing, compact shape

NATURAL BENEFITS:



PLACE STICKER HERE:

Vote for Your Preferred Native Plant

INSTRUCTIONS: Choose your top three and mark them with a sticker.

KEY - NATURAL BENEFITS



CATEGORY: NATIVE FLOWERS - KEEPS THE GROUND COOL



Photo: James St. John

Purple Coneflower
Echinacea purpurea

ABOUT THIS PLANT:

- Purple flowers in summer/fall

NATURAL BENEFITS:



PLACE STICKER HERE:



Photo: David J. Stang

Blue Star
Amsonia tabernaemontana

ABOUT THIS PLANT:

- Blue flowers in spring/summer

NATURAL BENEFITS:



PLACE STICKER HERE:

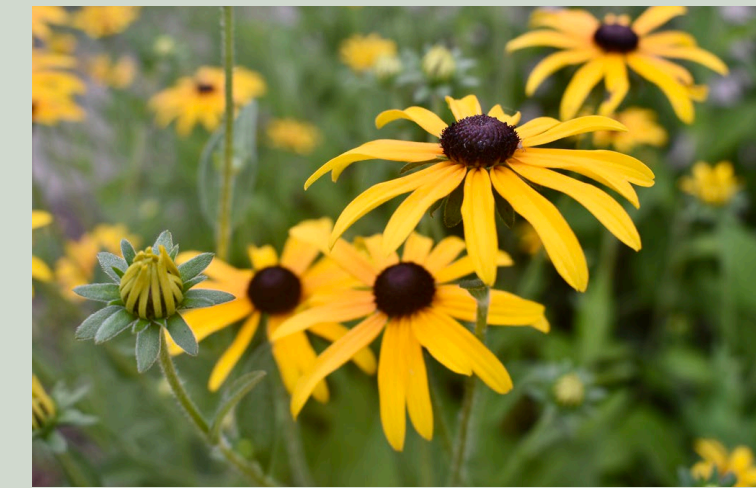


Photo: Cathy DeWitt

Black Eyed Susan
Rudbeckia hirta

ABOUT THIS PLANT:

- Yellow flowers in summer/fall

NATURAL BENEFITS:



PLACE STICKER HERE:



Photo: Andrew Sebastian

New England Aster
Symphyotrichum novae-angliae

ABOUT THIS PLANT:

- Purple flowers in summer/fall

NATURAL BENEFITS:



PLACE STICKER HERE:



Photo: Susan Blayney

Southern Blue Flag Iris
Iris virginica

ABOUT THIS PLANT:

- Purple flowers in spring/summer
- Strappy long leaves

NATURAL BENEFITS:



PLACE STICKER HERE:



Photo: Krzysztof Ziarnek

Mist Flower
Conoclinium coelestinum

ABOUT THIS PLANT:

- Fragrant
- Purple summer flowers

NATURAL BENEFITS:



PLACE STICKER HERE:



Photo: Susan Strine

Mountain Mint
Pycnanthemum pycnanthemoides

ABOUT THIS PLANT:

- Fragrant
- Unusual green/white flowers

NATURAL BENEFITS:



PLACE STICKER HERE:



Photo: Didier Descouens

Common Rose Mallow
Hibiscus moscheutos

ABOUT THIS PLANT:

- Large red flowers and large leaves

NATURAL BENEFITS:



PLACE STICKER HERE:

Vote for Your Preferred Native Tree

INSTRUCTIONS: Choose your top three and mark them with a sticker.

KEY - NATURAL BENEFITS



CATEGORY: NATIVE TREES - PROVIDE SHADE



Photo: Doni Mullien

Service Berry
Amelanchier arborea

ABOUT THIS TREE:

- Small tree
- White spring flowers, red small fruit

NATURAL BENEFITS:



PLACE STICKER HERE:

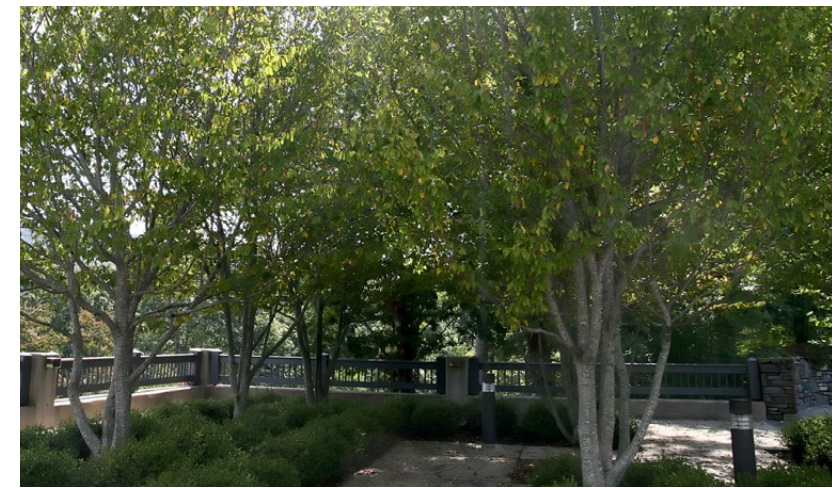


Photo: David J. Stang

Carolina Hornbeam
Carpinus caroliniana

ABOUT THIS TREE:

- Small tree
- Interesting bark and trunk
- Fall color

NATURAL BENEFITS:



PLACE STICKER HERE:



Photo: Mohamed Rezk

Redbud
Cercis canadensis

ABOUT THIS TREE:

- Small tree
- Purple spring flowers
- Heart shaped leaves

NATURAL BENEFITS:



PLACE STICKER HERE:



Photo: Famarith

Sweetbay Magnolia
Magnolia virginiana

ABOUT THIS TREE:

- Mid-sized tree
- Evergreen leaves
- Fragrant white flowers

NATURAL BENEFITS:



PLACE STICKER HERE:



Photo: Krzysztof Ziamek

Black Gum
Nyssa sylvatica

ABOUT THIS TREE:

- Mid-sized tree
- Bright red fall foliage
- Blue berries

NATURAL BENEFITS:



PLACE STICKER HERE:

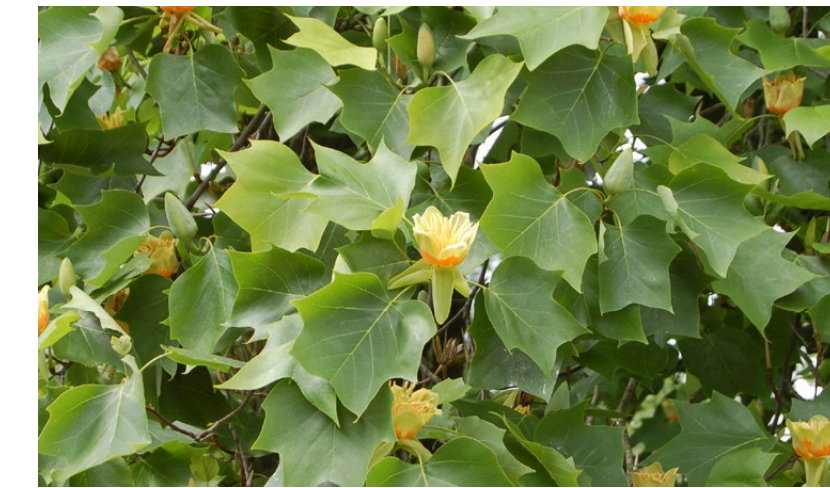


Photo: Alex Lomas

Tulip Poplar
Liriodendron tulipifera

ABOUT THIS TREE:

- Large tree
- Bright green summer leaves
- Colorful large flowers

NATURAL BENEFITS:



PLACE STICKER HERE:



Photo: Chris Light

Bald Cypress
Taxodium distichum

ABOUT THIS TREE:

- Large tree with narrow shape
- Deciduous leaves
- Textured bark

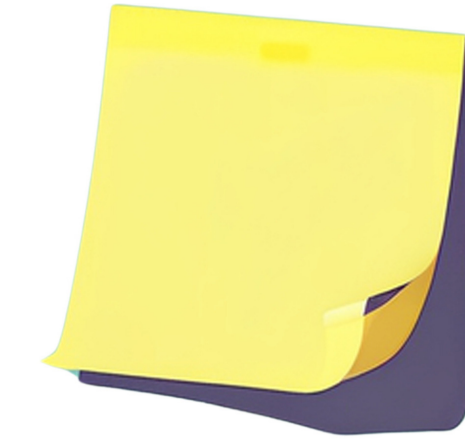
NATURAL BENEFITS:



PLACE STICKER HERE:

Tell us what you think!

INSTRUCTIONS: Write your thoughts and feedback about the project site plans on a sticky note.



Crest Road

Levister Court

General Thoughts

Gregg Street

Martin Street

