



New Bern Avenue Sidewalk and Transit Improvements Project

Transportation Improvement Program Project No. C-5604OA

Summary

- 1. History**
- 2. Purpose**
- 3. Description**
- 4. Schedule**
- 5. Website / Project Contacts**

Project History

- Major east-west commuter route to and from Downtown Raleigh.
- Divided one-way pair from the State Capitol to Poole Road and four-lane median divided roadway from Poole Road to I-440.
- Consistent with the New Bern Ave Corridor Study (Adopted - January 2012).
- Improve the connectivity of pedestrian and transit facilities.

Project Purpose

- Improve the connectivity of pedestrian and transit facilities along New Bern Avenue



Project Description

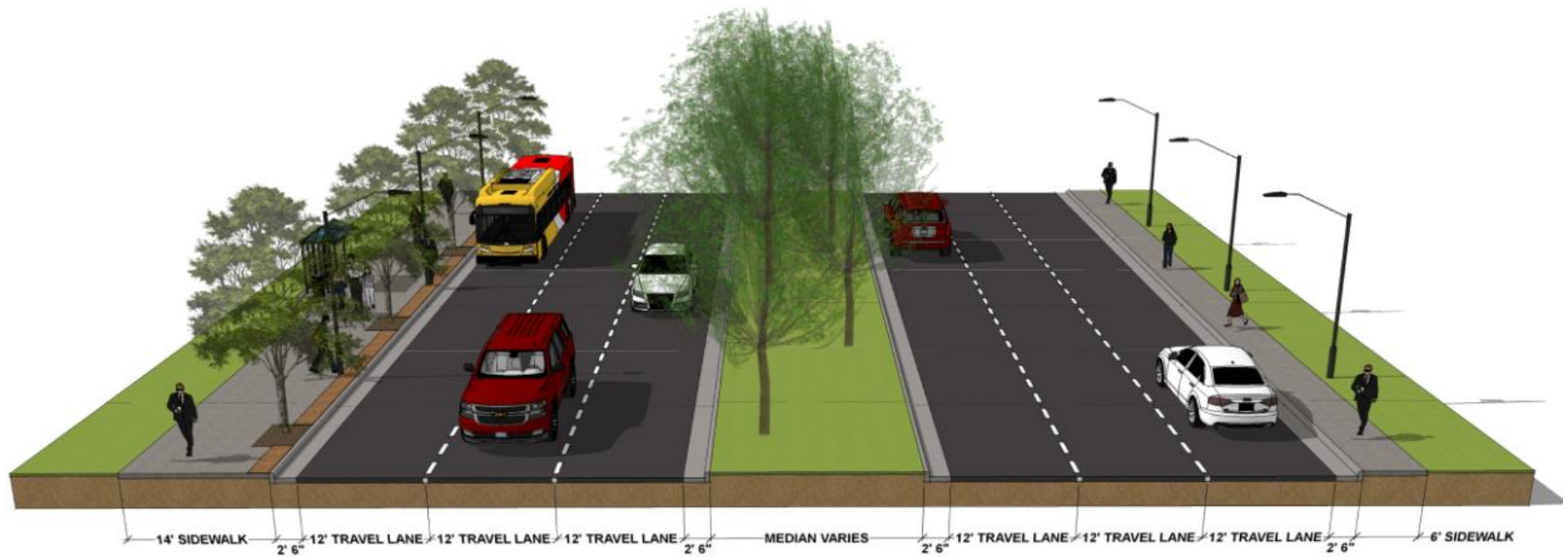
- Proposed multimodal improvements to New Bern Avenue from Tarboro Street to Sunnybrook Road
- 2.2 mile length



Project Description

- Section 1
 - Between Tarboro Street and Raleigh Boulevard
 - 14-foot-wide sidewalks on the back of curb
 - Upgraded transit stops
 - LED street lighting, streetscape, and landscaping
- 0.5 mile length

Section 1



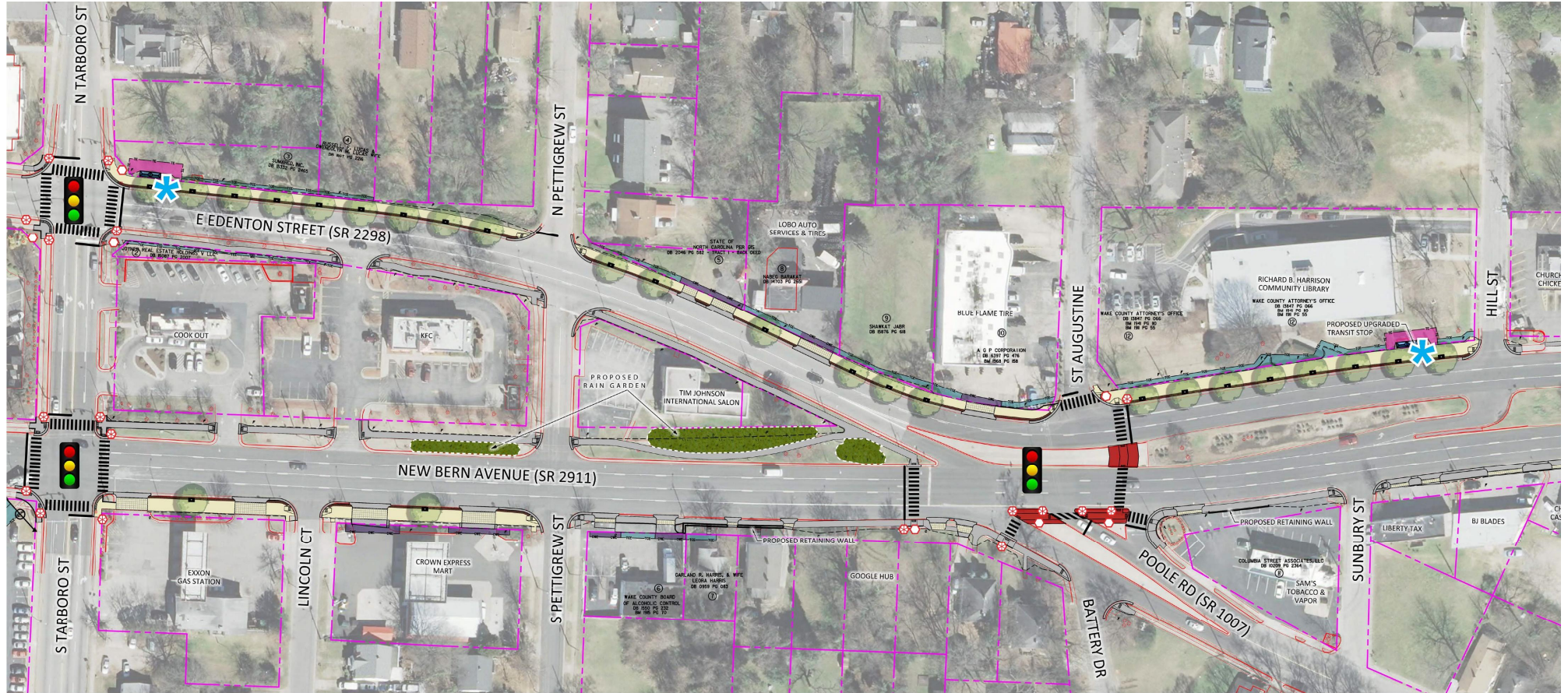
Section 1



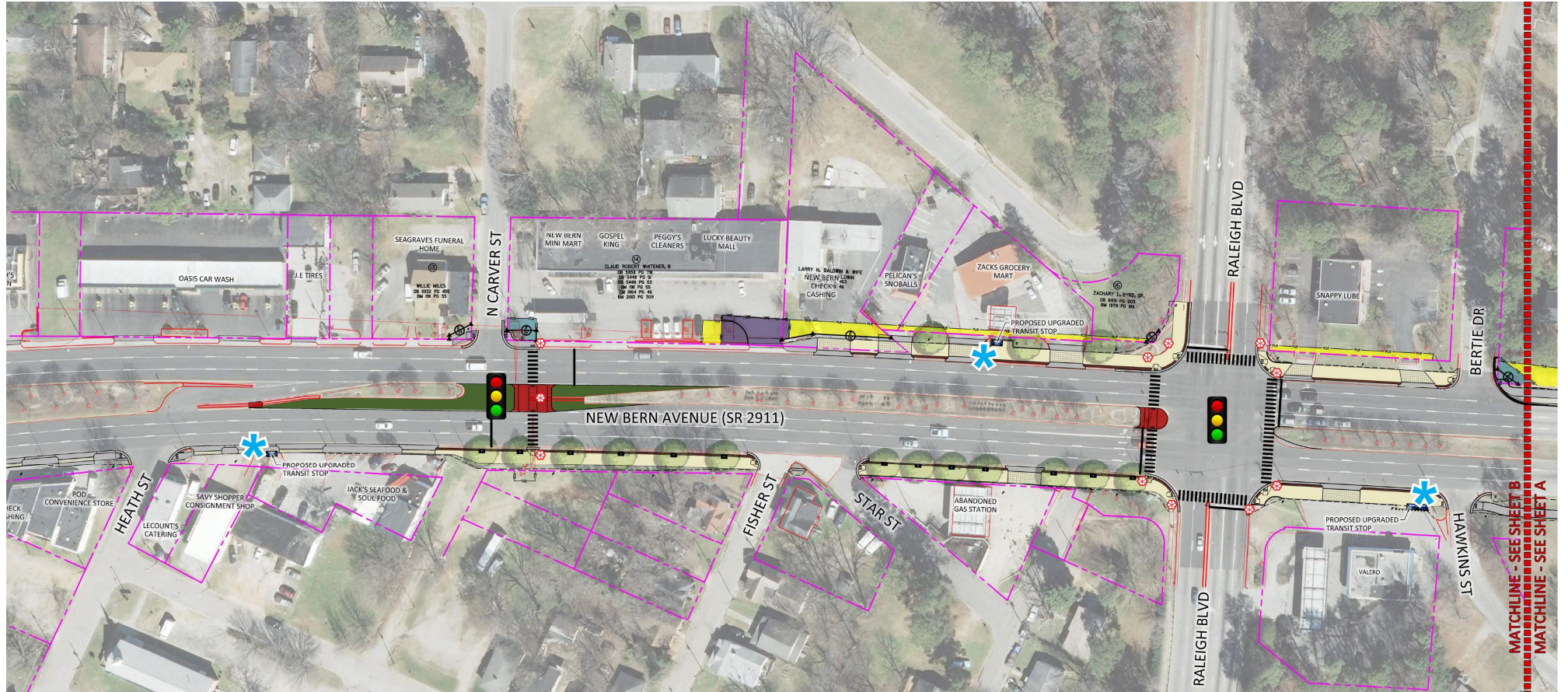
Section 1



Section 1



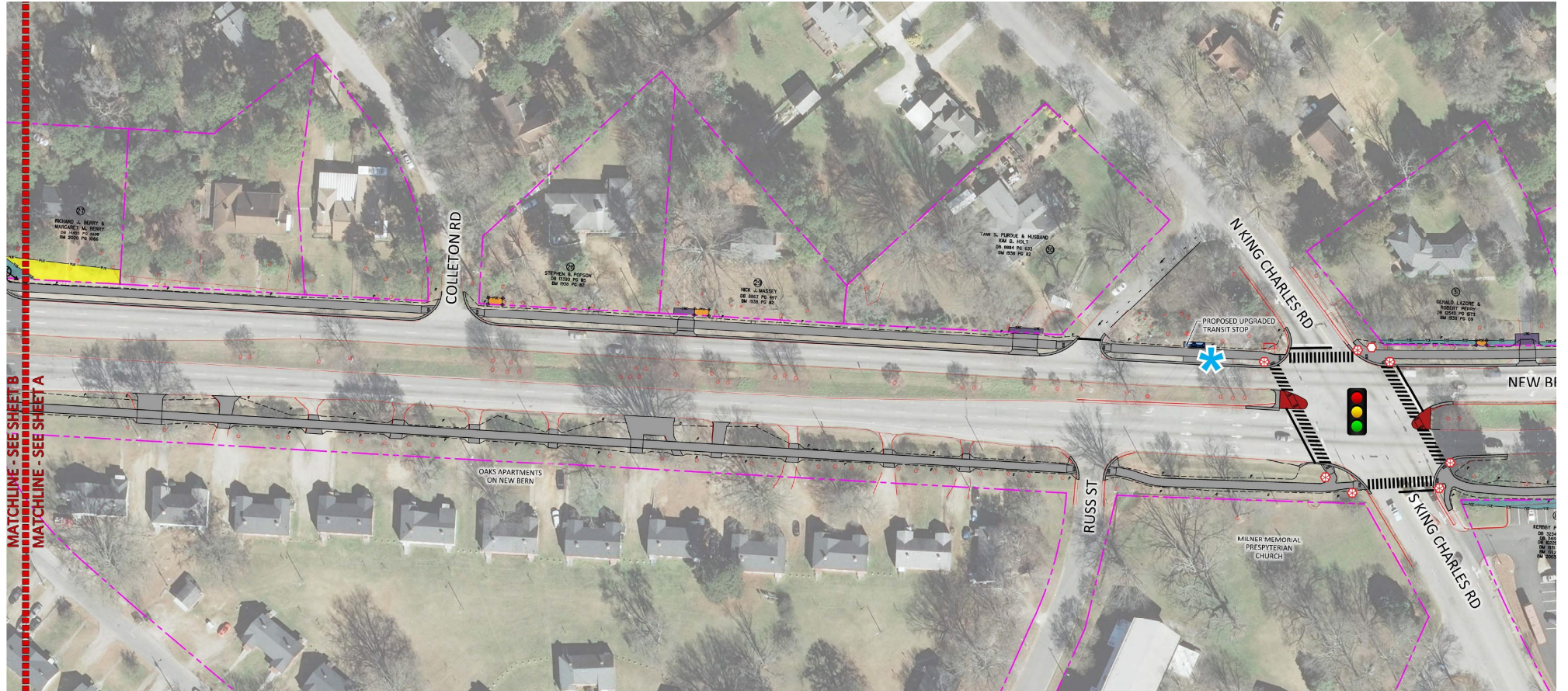
Section 1



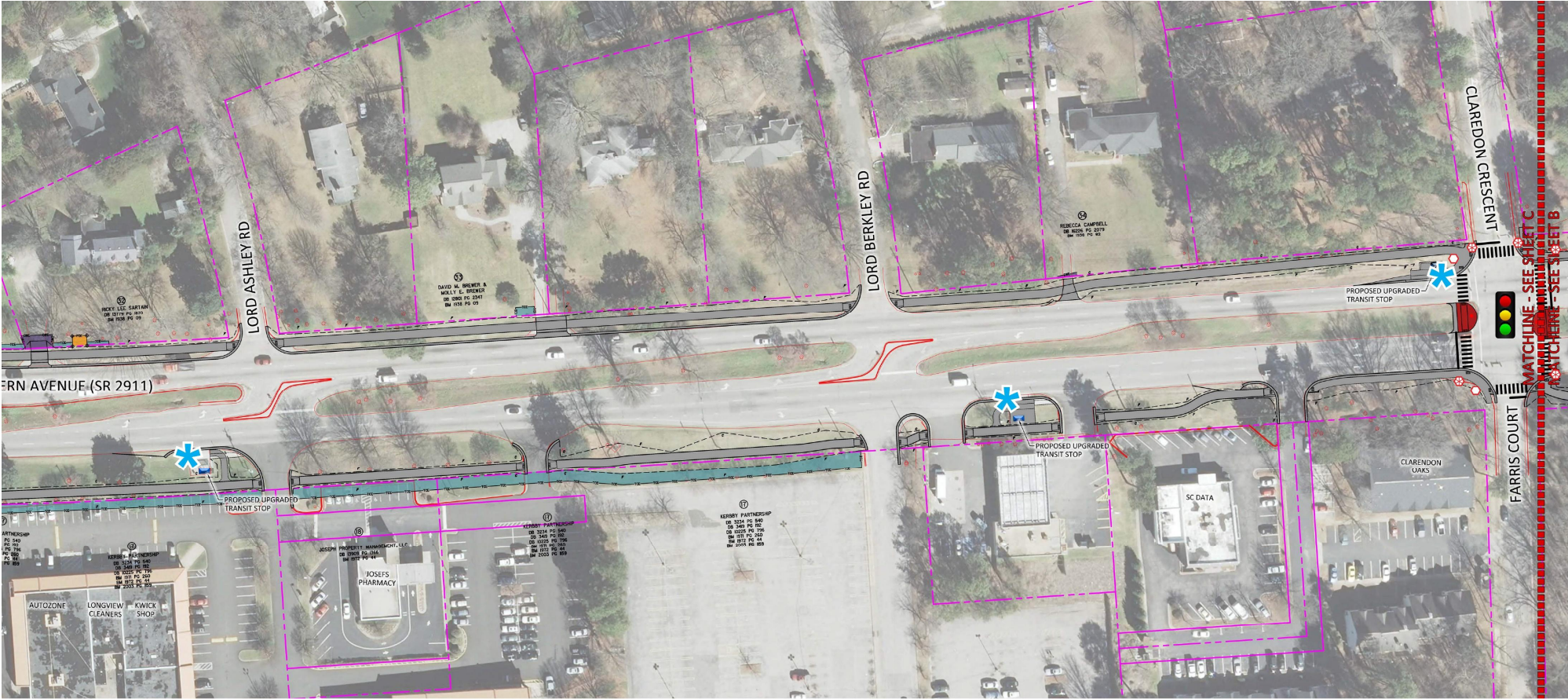
Project Description

- Section 2
 - Between Raleigh Boulevard and Sunnybrook Road
 - 8-foot-wide sidewalk/multi-use path with a greenway style alignment
 - Curb and gutter where required to minimize footprint and stay within the existing right-of-way
 - 1.7 mile length

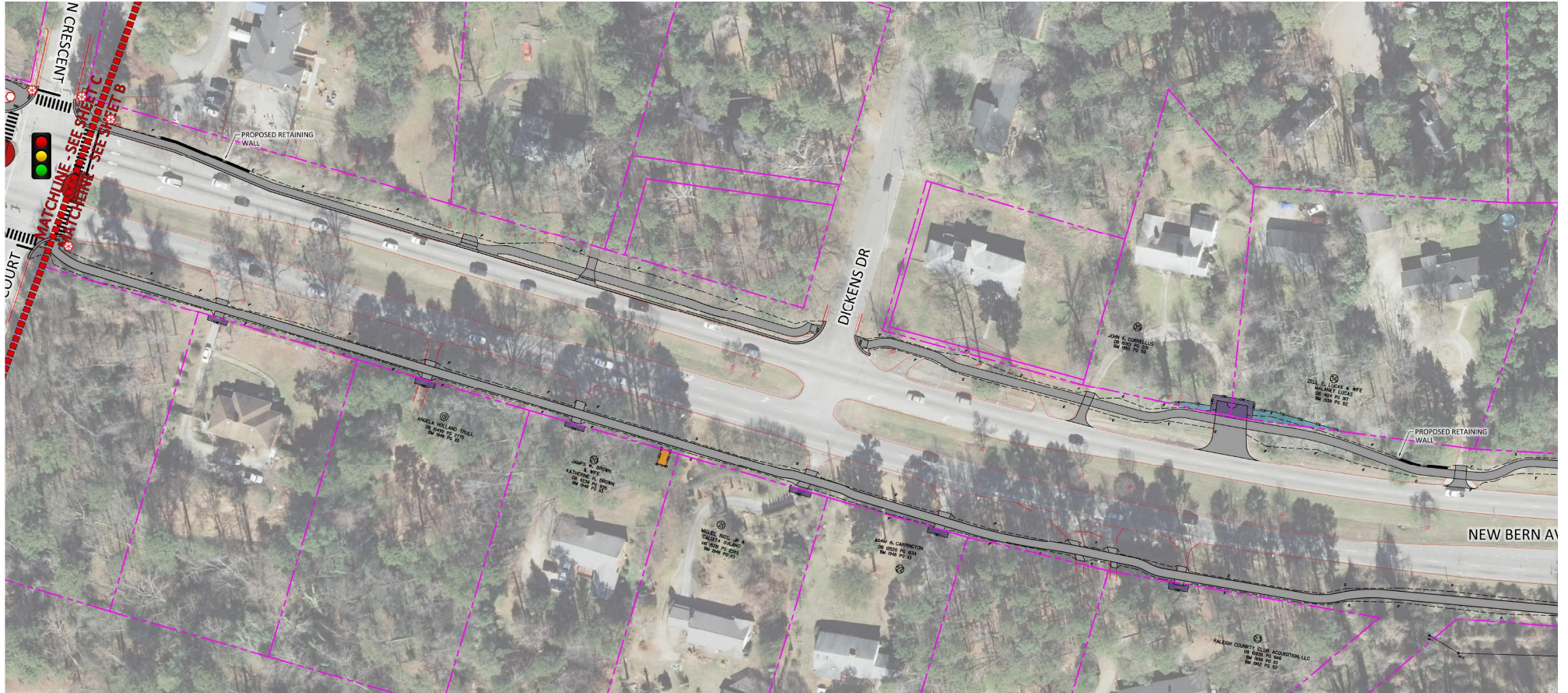
Section 2



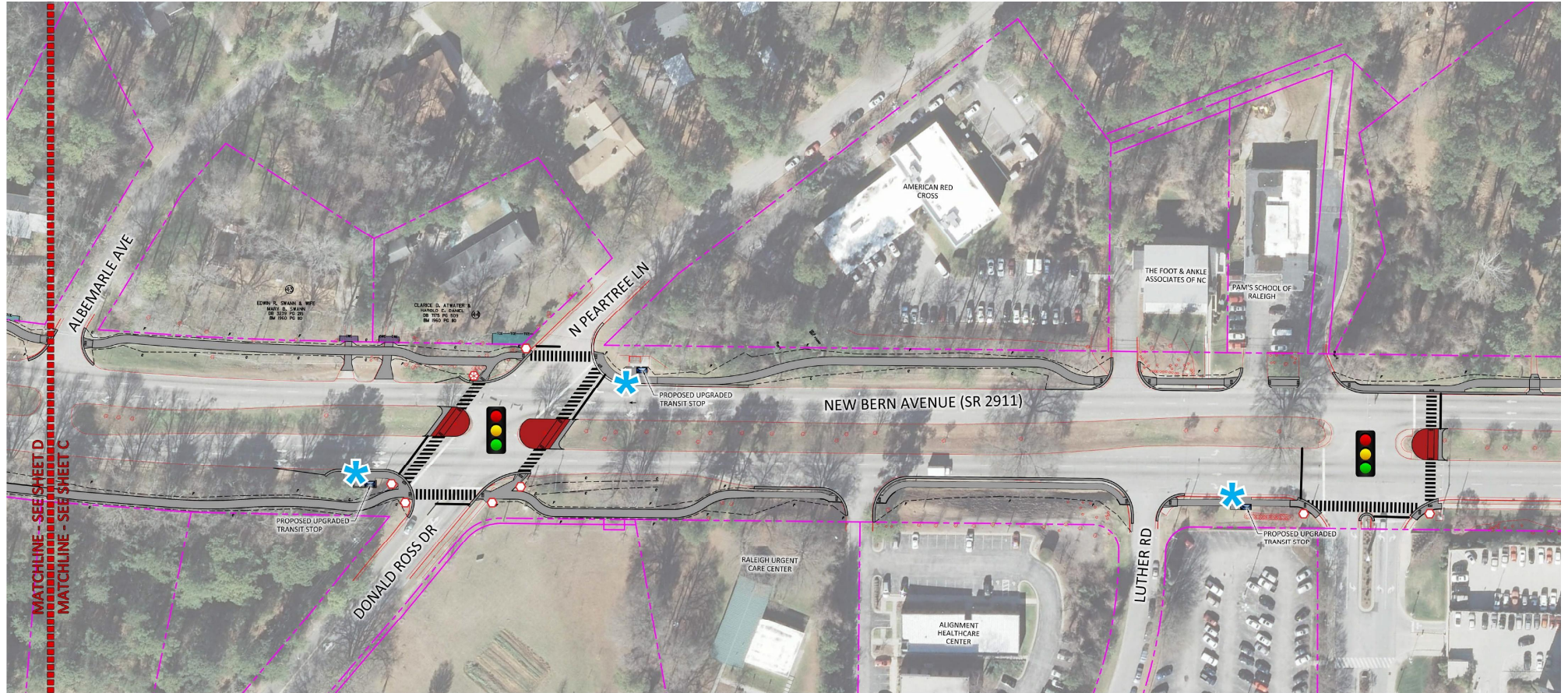
Section 2



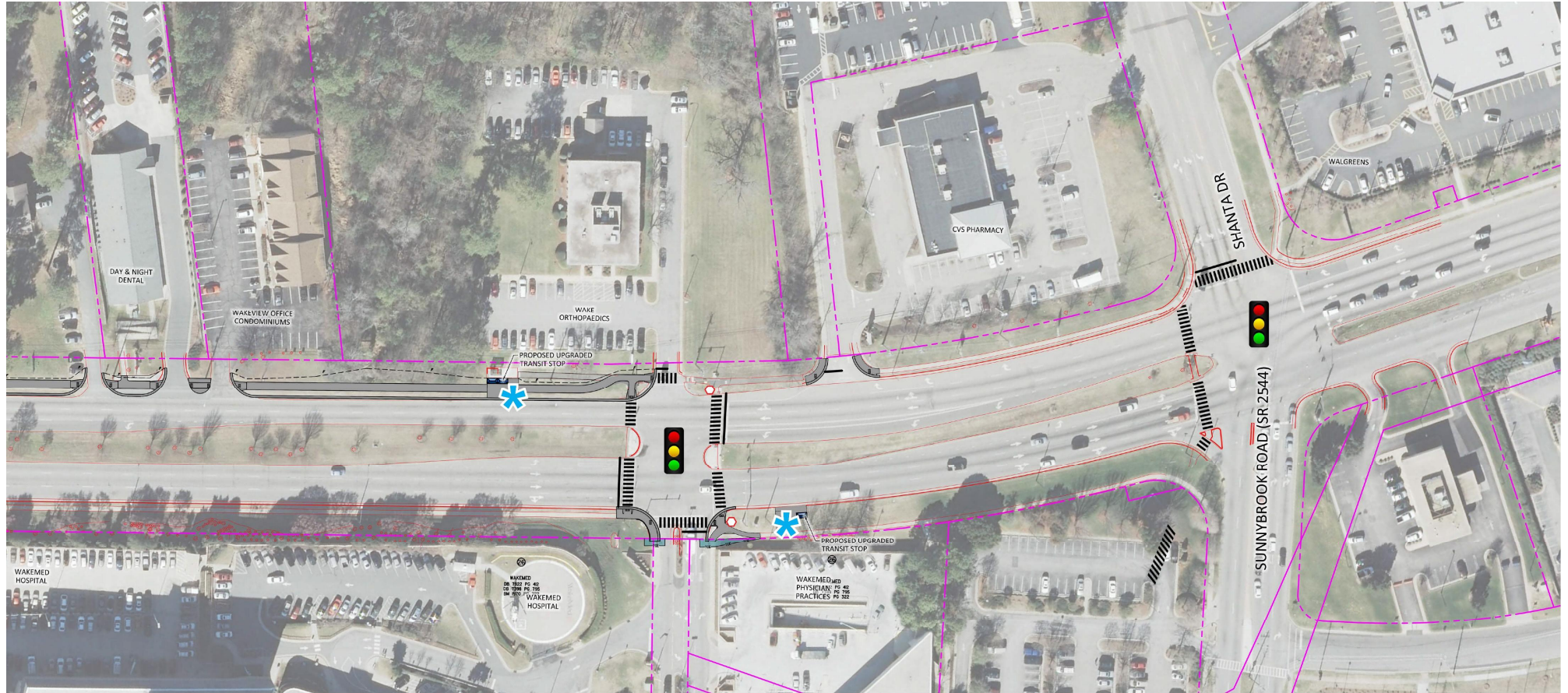
Section 2



Section 2



Section 2



Project Description

- Pedestrian/traffic signalization modifications and drainage improvements will be added where required along both sections of the project corridor



Project Description

- Pedestrian/traffic signalization modifications and drainage improvements will be added where required along both sections of the project corridor



Project Description

- Example Corridor (Western Blvd @ Varsity Dr)



Project Description

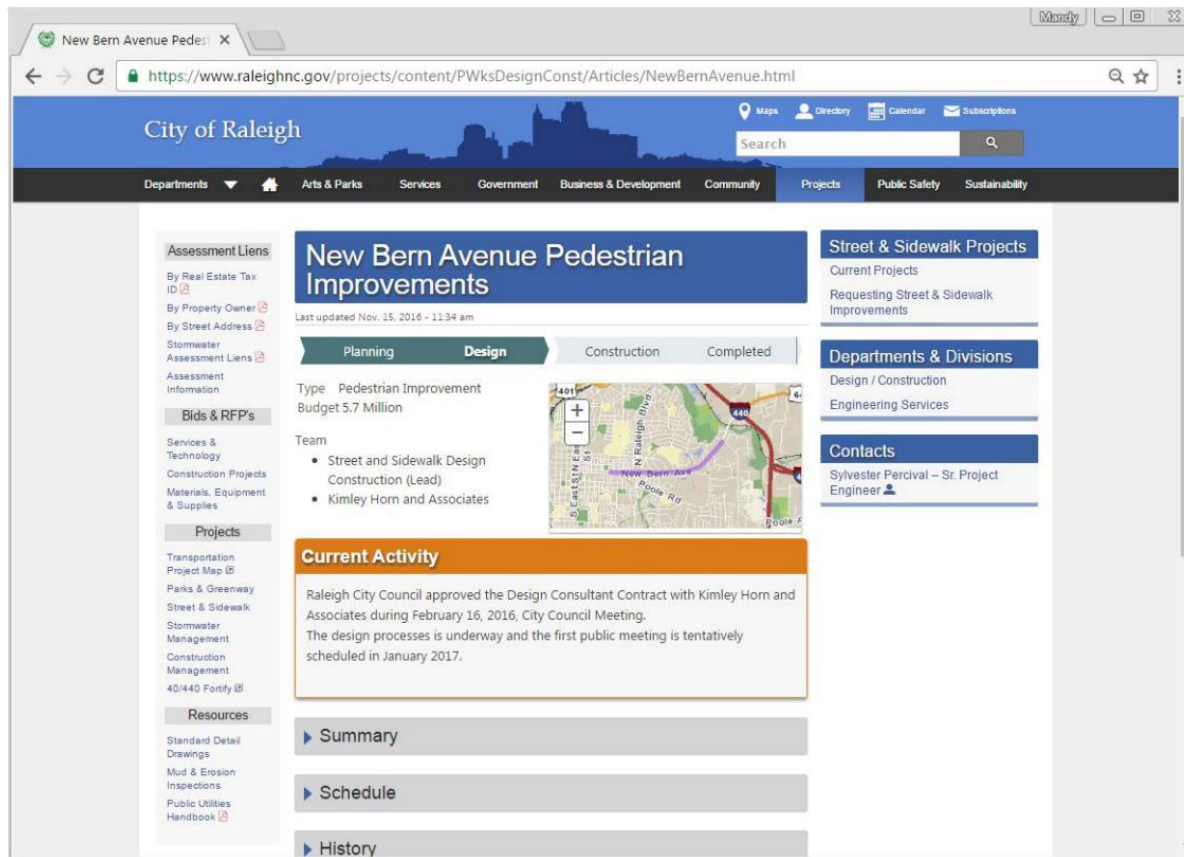
- Example Corridor (Capital Blvd North)



Project Schedule

Date	Description
December 14, 2017	Second Public Meeting
February 6, 2018	City Council Public Hearing
Summer 2018	Complete Right-of-Way and Easement Acquisitions
Fall 2018	Advertise for Construction
Winter 2018	Award Construction Contract
Fall 2019	Project Completion

Project Website



<https://www.raleighnc.gov/projects/content/PWksDesignConst/Articles/NewBernAvenue.html>

Project Contacts

David Savage, P.E.

City of Raleigh

P.O. Box 590

Raleigh, NC 27602

(919) 996-4136

David.Savage@raleighnc.gov

Jason Pace, P.E.

Kimley-Horn

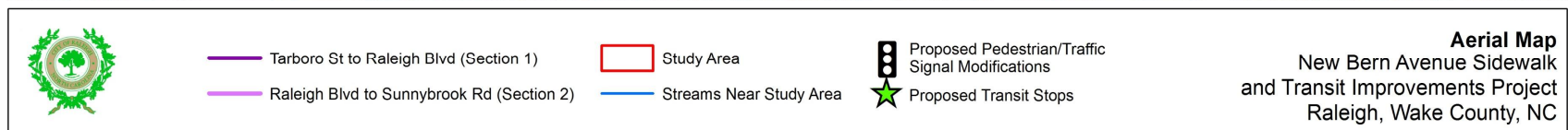
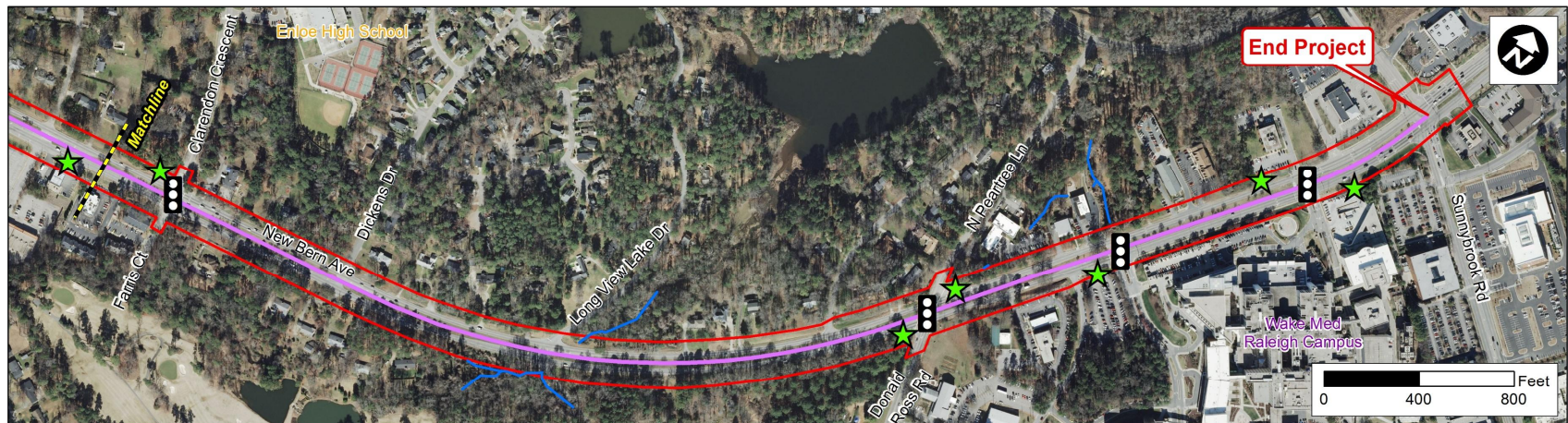
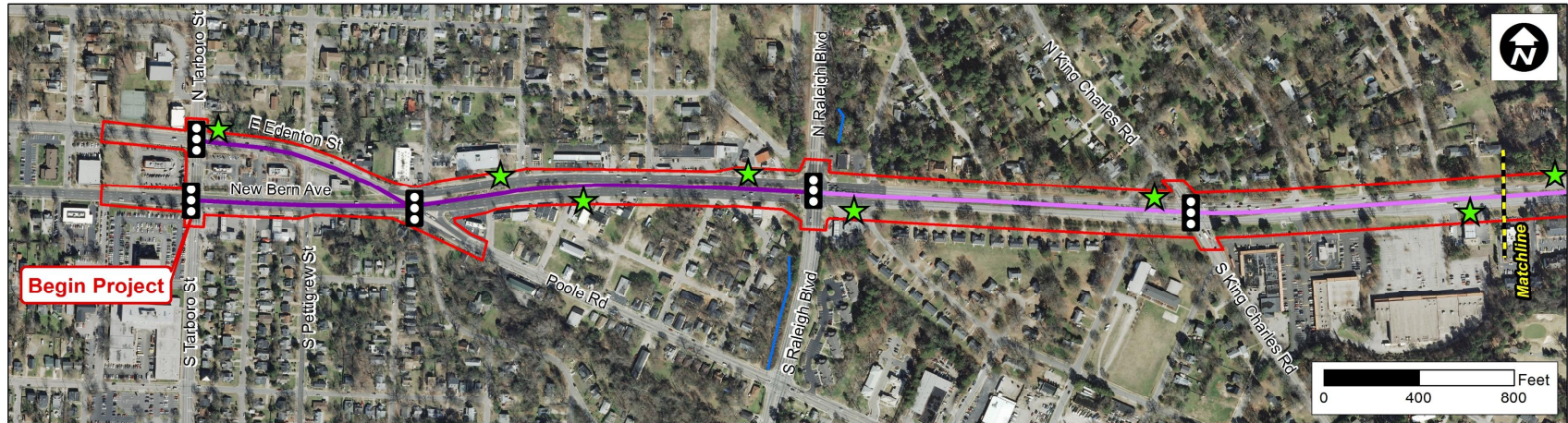
421 Fayetteville Street

Suite 600

Raleigh, NC 27601

(919) 677-2135

jason.pace@kimley-horn.com





LEGEND

NEW BERN AVENUE REVITALIZATION

SHEET A

DECEMBER 2017

Kimley»Horn



















PRELIMINARY PLANS
DO NOT USE FOR CONSTRUCTION



TYPICAL SECTION

NATCHLINE - SEE SHEET B
NATCHLINE - SEE SHEET A



LEGEND					
	PROPOSED RIGHT-OF-WAY		PUSH BUTTON		TEMPORARY CONSTRUCTION EASEMENT (TCE)
	PROPOSED LANDSCAPING		PEDESTRIAN HEAD		DRIVEWAY EASEMENT (DWE)
	PROPOSED CAPITAL CITY GRID CONCRETE WALK		EXISTING PROPERTY LINES		TEMPORARY EASEMENT (TE)
	PROPOSED STANDARD CONCRETE WALK		EXISTING CONDITIONS		PERMANENT DRAINAGE EASEMENT (PDE)
	PROPOSED BRICK PAVERS		PROPOSED PEDESTRIAN / TRAFFIC SIGNAL MODIFICATION		PERMANENT UTILITY EASEMENT (PUE)
	PROPOSED RETAINING WALL		PROPOSED UPGRADED TRANSIT STOP		PROPOSED CONCRETE MEDIAN

NEW BERN AVENUE REVITALIZATION

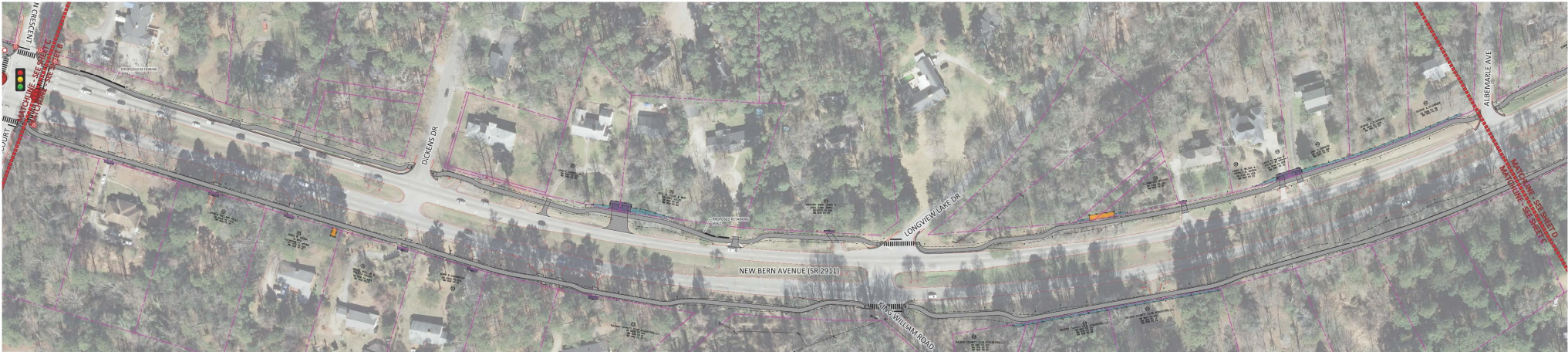
SHEET B











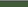






DECEMBER 2017

Kimley»Horn

PRELIMINARY PLANS
DO NOT USE FOR CONSTRUCTION





LEGEND			
	PROPOSED RIGHT-OF-WAY		PUSH BUTTON
	PROPOSED LANDSCAPING		PEDESTRIAN HEAD
	PROPOSED CAPITAL CITY GRID CONCRETE WALK		EXISTING PROPERTY LINES
	PROPOSED STANDARD CONCRETE WALK		EXISTING CONDITIONS
	PROPOSED BRICK PAVERS		PROPOSED PEDESTRIAN / TRAFFIC SIGNAL MODIFICATION
	PROPOSED RETAINING WALL		PROPOSED UPGRADED TRANSIT STOP
			TEMPORARY CONSTRUCTION EASEMENT (TCE)
			DRIVEWAY EASEMENT (DWE)
			TEMPORARY EASEMENT (TE)
			PERMANENT DRAINAGE EASEMENT (PDE)
			PERMANENT UTILITY EASEMENT (PUE)
			PROPOSED CONCRETE MEDIAN

NEW BERN AVENUE REVITALIZATION

SHEET C

DECEMBER 2017

Kimley»Horn

PRELIMINARY PLANS
DO NOT USE FOR CONSTRUCTION





	PROPOSED RIGHT-OF-WAY		PUSH BUTTON		TEMPORARY CONSTRUCTION EASEMENT (TCE)
	PROPOSED LANDSCAPING		PEDESTRIAN HEAD		DRIVEWAY EASEMENT (DWE)
	PROPOSED CAPITAL CITY GRID CONCRETE WALK		EXISTING PROPERTY LINES		TEMPORARY EASEMENT (TE)
	PROPOSED STANDARD CONCRETE WALK		EXISTING CONDITIONS		PERMANENT DRAINAGE EASEMENT (PDE)
	PROPOSED BRICK PAVERS		PROPOSED PEDESTRIAN / TRAFFIC SIGNAL MODIFICATION		PERMANENT UTILITY EASEMENT (PUE)
	PROPOSED RETAINING WALL		PROPOSED UPGRADED TRANSIT STOP		PROPOSED CONCRETE MEDIAN

NEW BERN AVENUE REVITALIZATION

SHEET D

DECEMBER 2017

Kimley»Horn

PRELIMINARY PLANS
DO NOT USE FOR CONSTRUCTION



LEGEND

	PROPOSED RIGHT-OF-WAY		PUSH BUTTON		TEMPORARY CONSTRUCTION EASEMENT (TCE)
	PROPOSED LANDSCAPING		PEDESTRIAN HEAD		DRIVEWAY EASEMENT (DWE)
	PROPOSED CAPITAL CITY GRID CONCRETE WALK		EXISTING PROPERTY LINES		TEMPORARY EASEMENT (TE)
	PROPOSED STANDARD CONCRETE WALK		EXISTING CONDITIONS		PERMANENT DRAINAGE EASEMENT (PDE)
	PROPOSED BRICK PAVERS		PROPOSED PEDESTRIAN / TRAFFIC SIGNAL MODIFICATION		PERMANENT UTILITY EASEMENT (PUE)
	PROPOSED RETAINING WALL		PROPOSED UPGRADED TRANSIT STOP		PROPOSED CONCRETE MEDIAN