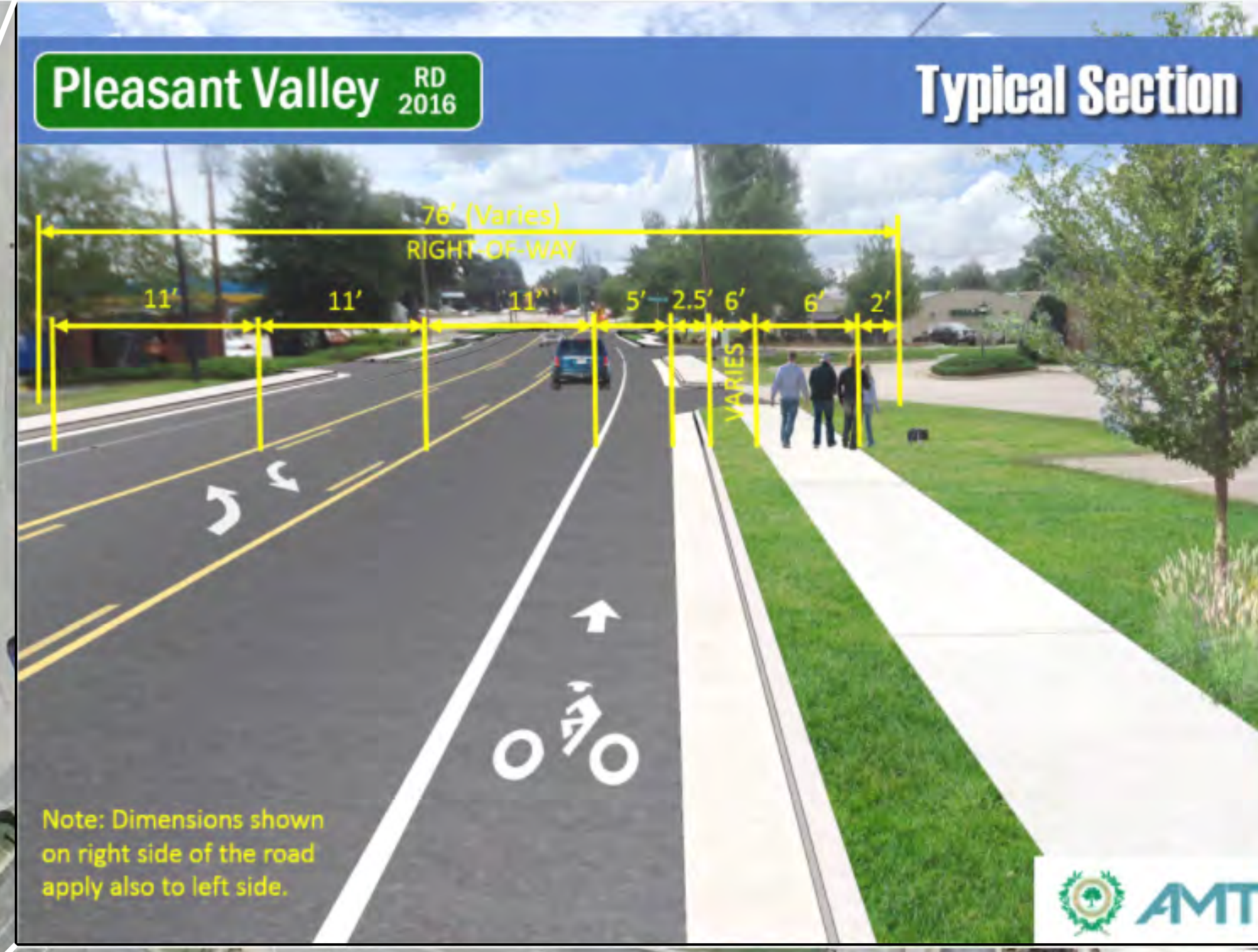
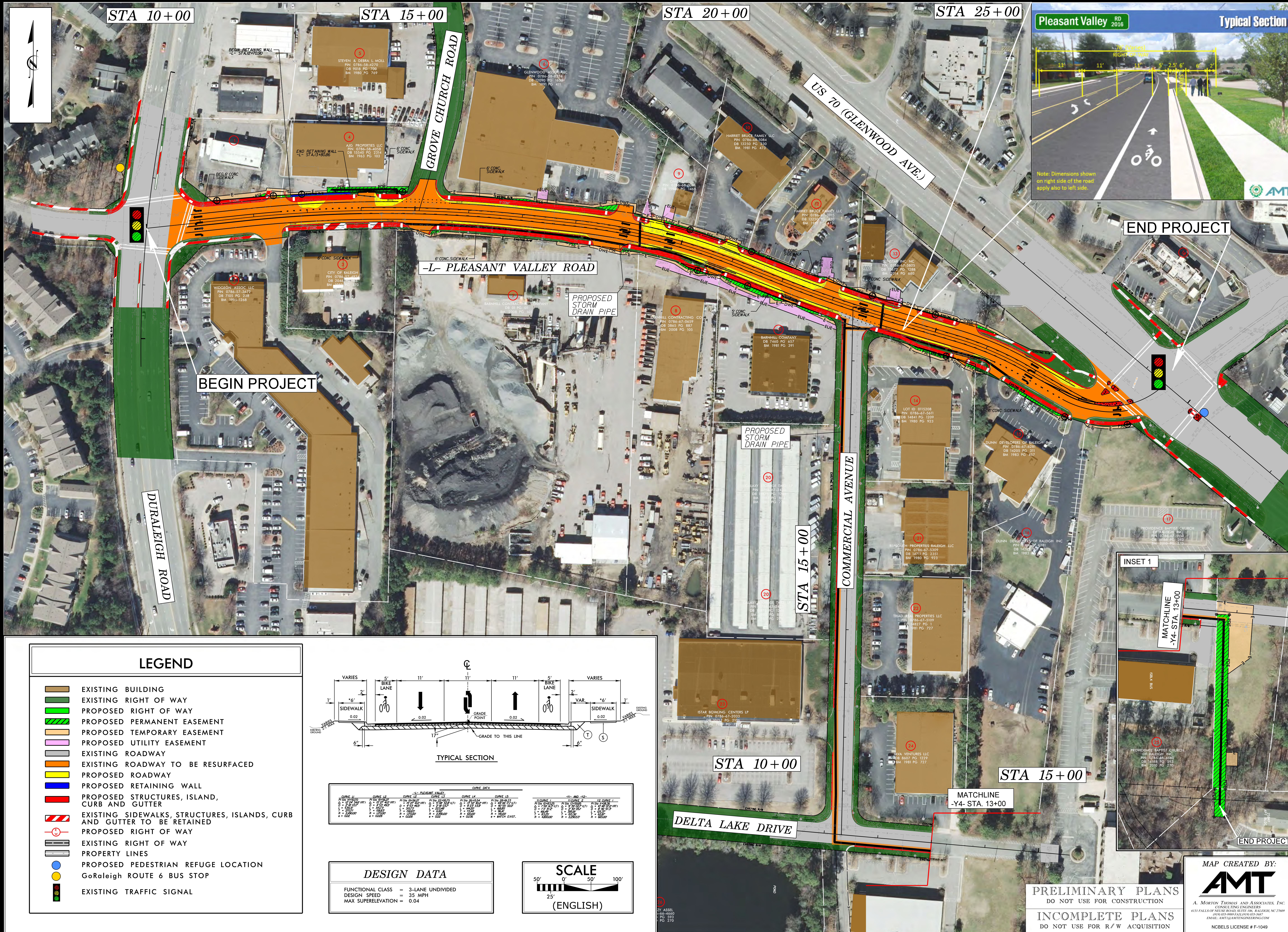




PUBLIC MEETING MAP
 (65% DESIGN)
 CITY OF RALEIGH PROJECT
 WAKE COUNTY
 PLEASANT VALLEY ROAD
 WIDENING PROJECT
 DATE: MARCH 15, 2018

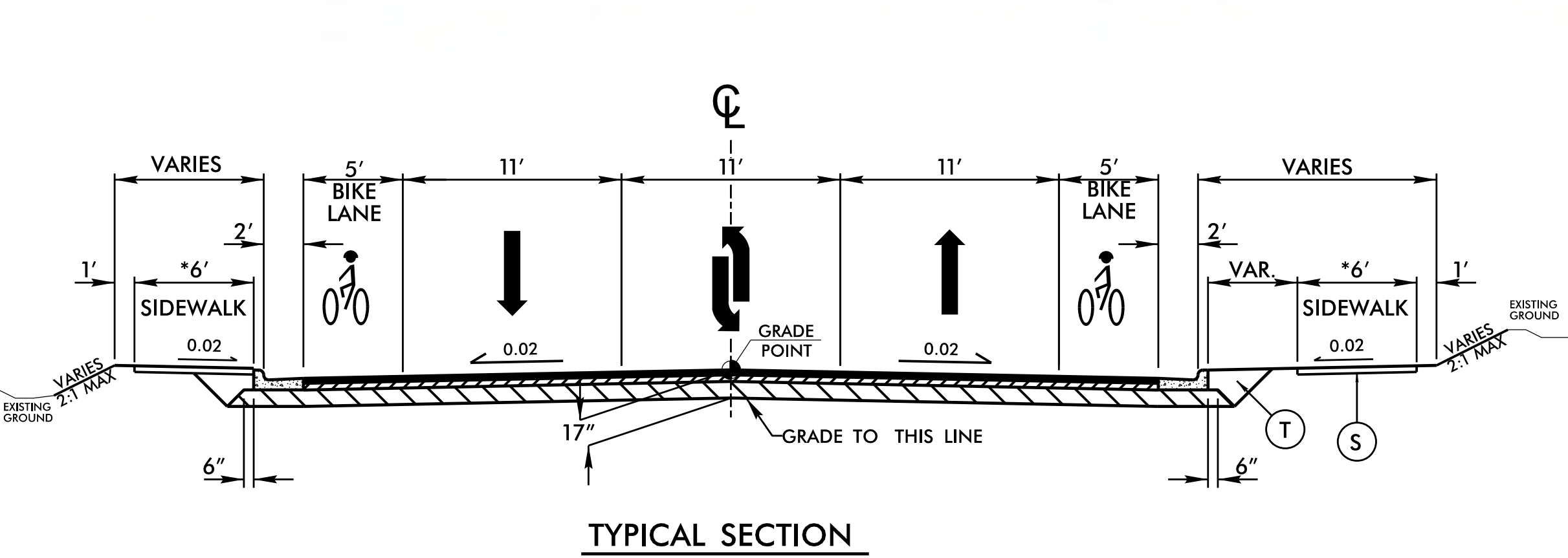


PUBLIC MEETING MAP
 (65% DESIGN)
 CITY OF RALEIGH PROJECT
 WAKE COUNTY
 PLEASANT VALLEY ROAD
 WIDENING PROJECT
 DATE: MARCH 15, 2018



LEGEND

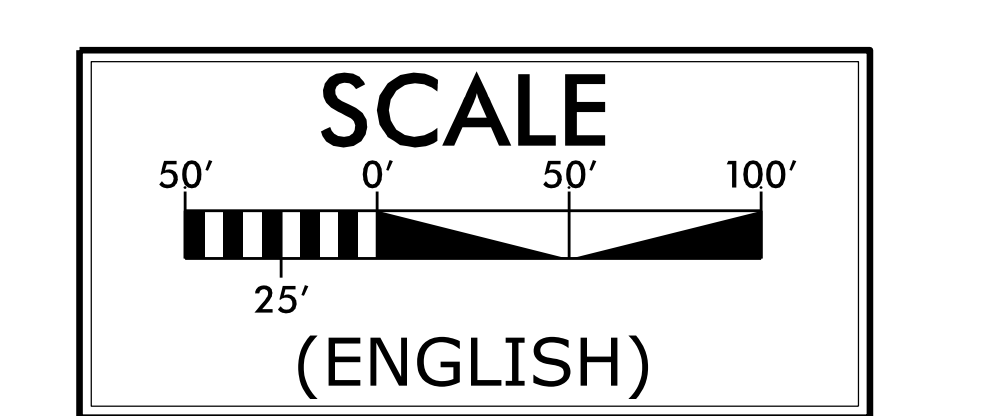
- EXISTING BUILDING
- EXISTING RIGHT OF WAY
- PROPOSED RIGHT OF WAY
- PROPOSED PERMANENT EASEMENT
- PROPOSED TEMPORARY EASEMENT
- PROPOSED UTILITY EASEMENT
- EXISTING ROADWAY
- EXISTING ROADWAY TO BE RESURFACED
- PROPOSED ROADWAY
- PROPOSED RETAINING WALL
- PROPOSED STRUCTURES, ISLAND, CURB AND GUTTER
- EXISTING SIDEWALKS, STRUCTURES, ISLANDS, CURB AND GUTTER TO BE RETAINED
- PROPOSED RIGHT OF WAY
- EXISTING RIGHT OF WAY
- PROPERTY LINES
- PROPOSED PEDESTRIAN REFUGE LOCATION
- GoRaleigh ROUTE 6 BUS STOP
- EXISTING TRAFFIC SIGNAL



LINE NO.	DATE	DESCRIPTION	BY	CHECKED
1	03/15/18	ISSUED FOR PUBLIC MEETING	JM	AMT
2	03/15/18	REVISED PER COMMENTS	JM	AMT
3	03/15/18	REVISED PER COMMENTS	JM	AMT
4	03/15/18	REVISED PER COMMENTS	JM	AMT
5	03/15/18	REVISED PER COMMENTS	JM	AMT
6	03/15/18	REVISED PER COMMENTS	JM	AMT
7	03/15/18	REVISED PER COMMENTS	JM	AMT
8	03/15/18	REVISED PER COMMENTS	JM	AMT
9	03/15/18	REVISED PER COMMENTS	JM	AMT
10	03/15/18	REVISED PER COMMENTS	JM	AMT
11	03/15/18	REVISED PER COMMENTS	JM	AMT
12	03/15/18	REVISED PER COMMENTS	JM	AMT
13	03/15/18	REVISED PER COMMENTS	JM	AMT
14	03/15/18	REVISED PER COMMENTS	JM	AMT
15	03/15/18	REVISED PER COMMENTS	JM	AMT
16	03/15/18	REVISED PER COMMENTS	JM	AMT
17	03/15/18	REVISED PER COMMENTS	JM	AMT
18	03/15/18	REVISED PER COMMENTS	JM	AMT
19	03/15/18	REVISED PER COMMENTS	JM	AMT
20	03/15/18	REVISED PER COMMENTS	JM	AMT
21	03/15/18	REVISED PER COMMENTS	JM	AMT
22	03/15/18	REVISED PER COMMENTS	JM	AMT
23	03/15/18	REVISED PER COMMENTS	JM	AMT
24	03/15/18	REVISED PER COMMENTS	JM	AMT
25	03/15/18	REVISED PER COMMENTS	JM	AMT
26	03/15/18	REVISED PER COMMENTS	JM	AMT
27	03/15/18	REVISED PER COMMENTS	JM	AMT
28	03/15/18	REVISED PER COMMENTS	JM	AMT
29	03/15/18	REVISED PER COMMENTS	JM	AMT
30	03/15/18	REVISED PER COMMENTS	JM	AMT
31	03/15/18	REVISED PER COMMENTS	JM	AMT
32	03/15/18	REVISED PER COMMENTS	JM	AMT
33	03/15/18	REVISED PER COMMENTS	JM	AMT
34	03/15/18	REVISED PER COMMENTS	JM	AMT
35	03/15/18	REVISED PER COMMENTS	JM	AMT
36	03/15/18	REVISED PER COMMENTS	JM	AMT
37	03/15/18	REVISED PER COMMENTS	JM	AMT
38	03/15/18	REVISED PER COMMENTS	JM	AMT
39	03/15/18	REVISED PER COMMENTS	JM	AMT
40	03/15/18	REVISED PER COMMENTS	JM	AMT
41	03/15/18	REVISED PER COMMENTS	JM	AMT
42	03/15/18	REVISED PER COMMENTS	JM	AMT
43	03/15/18	REVISED PER COMMENTS	JM	AMT
44	03/15/18	REVISED PER COMMENTS	JM	AMT
45	03/15/18	REVISED PER COMMENTS	JM	AMT
46	03/15/18	REVISED PER COMMENTS	JM	AMT
47	03/15/18	REVISED PER COMMENTS	JM	AMT
48	03/15/18	REVISED PER COMMENTS	JM	AMT
49	03/15/18	REVISED PER COMMENTS	JM	AMT
50	03/15/18	REVISED PER COMMENTS	JM	AMT
51	03/15/18	REVISED PER COMMENTS	JM	AMT
52	03/15/18	REVISED PER COMMENTS	JM	AMT
53	03/15/18	REVISED PER COMMENTS	JM	AMT
54	03/15/18	REVISED PER COMMENTS	JM	AMT
55	03/15/18	REVISED PER COMMENTS	JM	AMT
56	03/15/18	REVISED PER COMMENTS	JM	AMT
57	03/15/18	REVISED PER COMMENTS	JM	AMT
58	03/15/18	REVISED PER COMMENTS	JM	AMT
59	03/15/18	REVISED PER COMMENTS	JM	AMT
60	03/15/18	REVISED PER COMMENTS	JM	AMT
61	03/15/18	REVISED PER COMMENTS	JM	AMT
62	03/15/18	REVISED PER COMMENTS	JM	AMT
63	03/15/18	REVISED PER COMMENTS	JM	AMT
64	03/15/18	REVISED PER COMMENTS	JM	AMT
65	03/15/18	REVISED PER COMMENTS	JM	AMT
66	03/15/18	REVISED PER COMMENTS	JM	AMT
67	03/15/18	REVISED PER COMMENTS	JM	AMT
68	03/15/18	REVISED PER COMMENTS	JM	AMT
69	03/15/18	REVISED PER COMMENTS	JM	AMT
70	03/15/18	REVISED PER COMMENTS	JM	AMT
71	03/15/18	REVISED PER COMMENTS	JM	AMT
72	03/15/18	REVISED PER COMMENTS	JM	AMT
73	03/15/18	REVISED PER COMMENTS	JM	AMT
74	03/15/18	REVISED PER COMMENTS	JM	AMT
75	03/15/18	REVISED PER COMMENTS	JM	AMT
76	03/15/18	REVISED PER COMMENTS	JM	AMT
77	03/15/18	REVISED PER COMMENTS	JM	AMT
78	03/15/18	REVISED PER COMMENTS	JM	AMT
79	03/15/18	REVISED PER COMMENTS	JM	AMT
80	03/15/18	REVISED PER COMMENTS	JM	AMT
81	03/15/18	REVISED PER COMMENTS	JM	AMT
82	03/15/18	REVISED PER COMMENTS	JM	AMT
83	03/15/18	REVISED PER COMMENTS	JM	AMT
84	03/15/18	REVISED PER COMMENTS	JM	AMT
85	03/15/18	REVISED PER COMMENTS	JM	AMT
86	03/15/18	REVISED PER COMMENTS	JM	AMT
87	03/15/18	REVISED PER COMMENTS	JM	AMT
88	03/15/18	REVISED PER COMMENTS	JM	AMT
89	03/15/18	REVISED PER COMMENTS	JM	AMT
90	03/15/18	REVISED PER COMMENTS	JM	AMT
91	03/15/18	REVISED PER COMMENTS	JM	AMT
92	03/15/18	REVISED PER COMMENTS	JM	AMT
93	03/15/18	REVISED PER COMMENTS	JM	AMT
94	03/15/18	REVISED PER COMMENTS	JM	AMT
95	03/15/18	REVISED PER COMMENTS	JM	AMT
96	03/15/18	REVISED PER COMMENTS	JM	AMT
97	03/15/18	REVISED PER COMMENTS	JM	AMT
98	03/15/18	REVISED PER COMMENTS	JM	AMT
99	03/15/18	REVISED PER COMMENTS	JM	AMT
100	03/15/18	REVISED PER COMMENTS	JM	AMT

DESIGN DATA

FUNCTIONAL CLASS = 3-LANE UNDIVIDED
 DESIGN SPEED = 35 MPH
 MAX SUPERELEVATION = 0.04



PRELIMINARY PLANS
 DO NOT USE FOR CONSTRUCTION
 INCOMPLETE PLANS
 DO NOT USE FOR R/W ACQUISITION

MAP CREATED BY:

 A. MORETON THOMAS AND ASSOCIATES, INC.
 CONSULTING ENGINEERS
 8111 FALLS OF NEUSE ROAD, SUITE 100, RALEIGH, NC 27609
 P: 919.877.4444
 F: 919.877.4444
 EMAIL: AMT@AMTENGINEERING.COM
 NCBELS LICENSE # F-1049