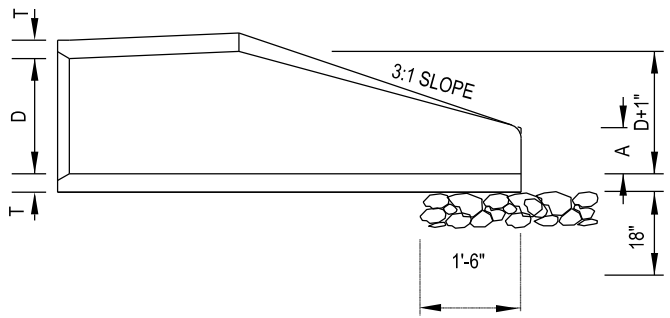
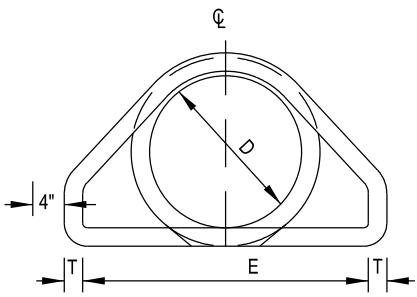


PLAN



SECTION



END VIEW

TABLE OF DIMENSIONS							
D	T	A	B	C	E	L	WT.
15"	2-1/4"	6"	2'-3"	3'-10"	2'-0"	6'-1"	730
18"	2-1/2"	9"	2'-3"	3'-10"	3'-0"	6'-1"	1190
24"	3"	10"	3'-8"	2'-6"	4'-0"	6'-2"	1770
30"	3-1/2"	1'-0"	4'-6"	1'-8"	5'-0"	6'-2"	2380

NOTES:

1. REINFORCEMENT SHALL CONFORM TO THE REQUIREMENTS OF REINFORCED CONCRETE PIP OF LIKE DIAMETER PER AASHTO M170, TABLE 2, WALL B.
2. ALL CONCRETE TO BE 3600 P.S.I COMPRESSIVE STRENGTH.
3. PROVIDE TONGUE OR SPIGOT JOINT AT INLET END SECTION.
4. PROVIDE GROOVE OR BELL JOINT AT OUTLET END SECTION.
5. THE DIMENSIONS FOR END SECTIONS SHALL SUBSTANTIALLY AGREE WITH THE TABLE. MINOR VARIATIONS WILL BE PERMITTED BASED ON THE MANUFACTURER'S STANDARD FORMS AND TEMPLATES.
6. NOT TO BE USED IN NCDOT MAINTAINED ROW.

CITY OF RALEIGH		
STANDARD DETAIL		
REVISIONS	DATE: 9/2024	NOT TO SCALE
	FLARED END SECTION 15" THRU 30" PIPE	
	SW-10.03	