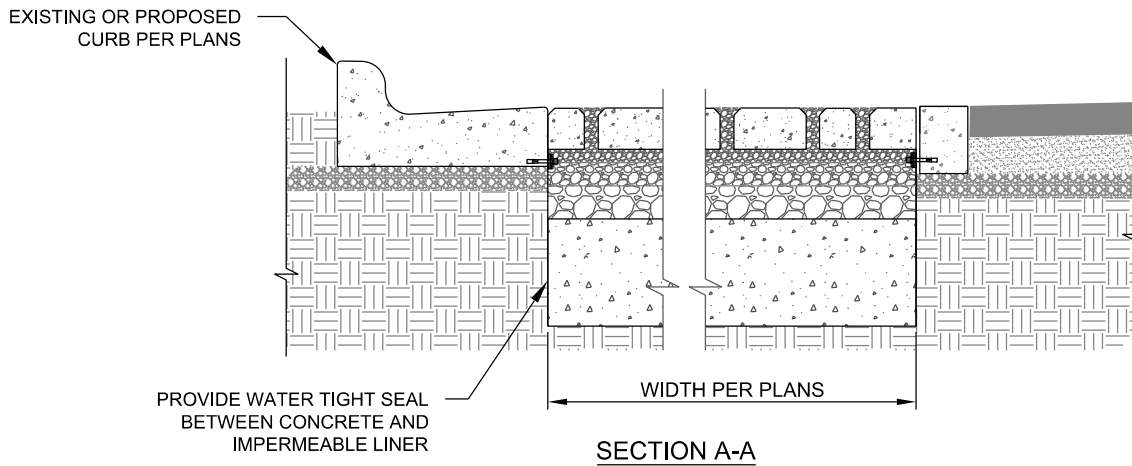


TYPICAL ELEVATION



SECTION A-A

**NOTES**

1. CHECK DAMS TO BE USED UNDER PERMEABLE INTERLOCKING CONCRETE PAVERS WHERE INFILTRATION IS ALLOWED. IF THE SYSTEM IS FULLY LINED WITH NO INFILTRATION, CHECK DAMS ARE NOT NEEDED.
2. CONCRETE CHECK DAM EMBEDMENT PER GEOTECHNICAL ENGINEER'S RECOMMENDATIONS.
3. IF INCIDENTAL INFILTRATION IS ALLOWED ON POOR SOILS, OPTIONALLY INSTALL PERFORATED UNDERDRAIN PER SW-30.07.1 AT ENGINEER'S DISCRETION.
4. CONCRETE SHALL BE 650-C-3250.

<b>CITY OF RALEIGH</b>		
<b>STANDARD DETAIL</b>		
REVISIONS	DATE: 9/2024	NOT TO SCALE
	PERMEABLE PAVER SUB-SURFACE CHECK DAM DETAIL	
<b>SW-30.11.2</b>		