



Shelley Road Bridge Replacement

Meet the Team

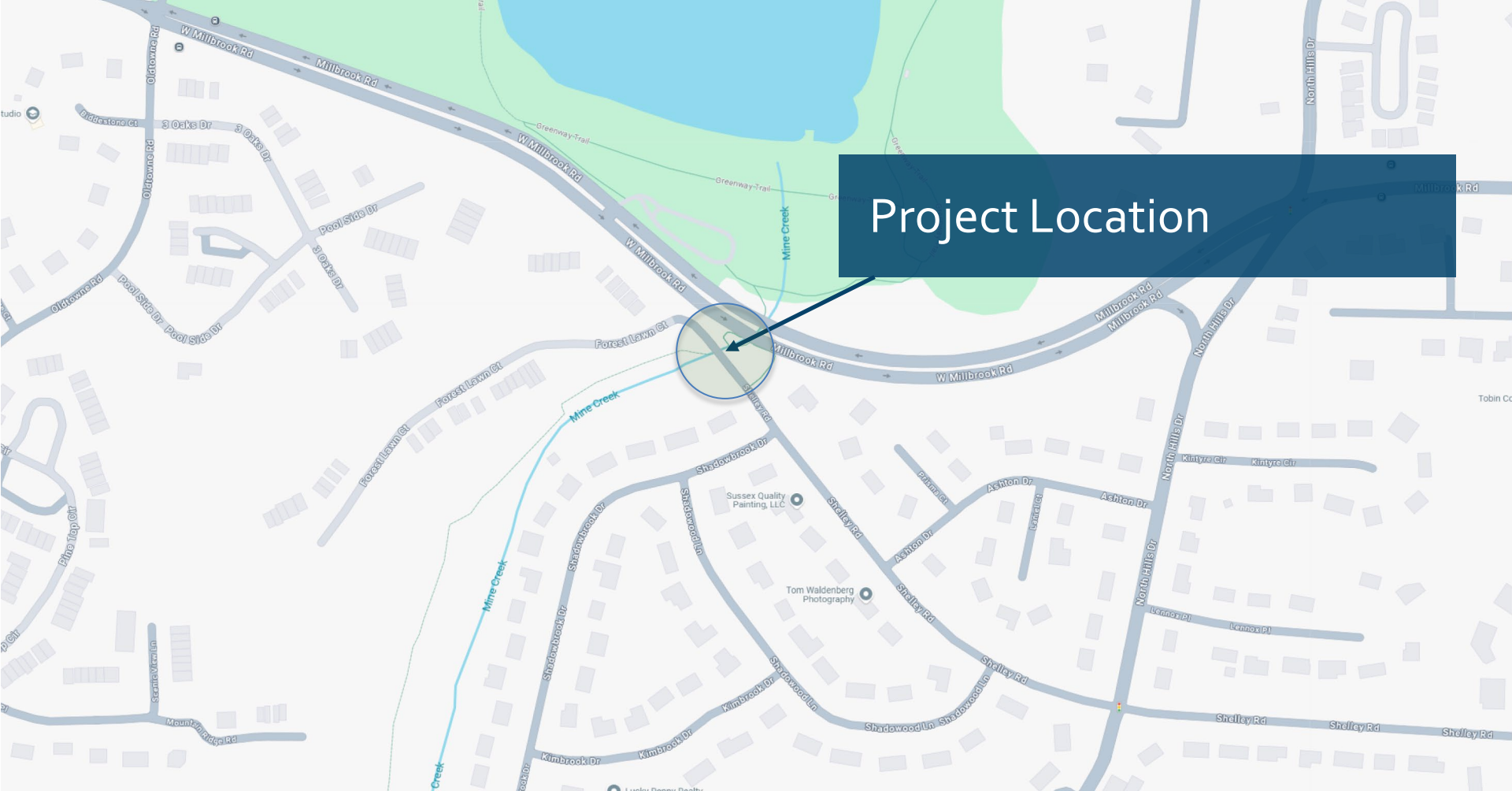
City of Raleigh

- Project Manager - Riska Dees
- Real Estate - Robert Mathes

Design Consultant - Transystems

- Project Manager - Janaki Patel

Project Location



Existing Conditions

- Two-lane road bridge
- Over 60 years old
- Lack of bike/ped connections to adjacent Mine Creek Greenway on West side
- Only access to Forest Lawn Court community



Purpose of Project

- Evident of rehabilitation need due to age and condition
- Priority due to only access point for Forest Lawn Court
- Improve safety by enhancing mobility and connectivity for all users
- Project funded by the Federal Bridge Formula Program (BFP)

Photo by Transystems



Proposed Improvements

- Replace bridge to include two vehicular travel lanes and sidewalk connection
- Provide safe connections to existing sidewalks and Mine Creek greenway
- Coordinate construction with adjacent sewer replacement and greenway projects

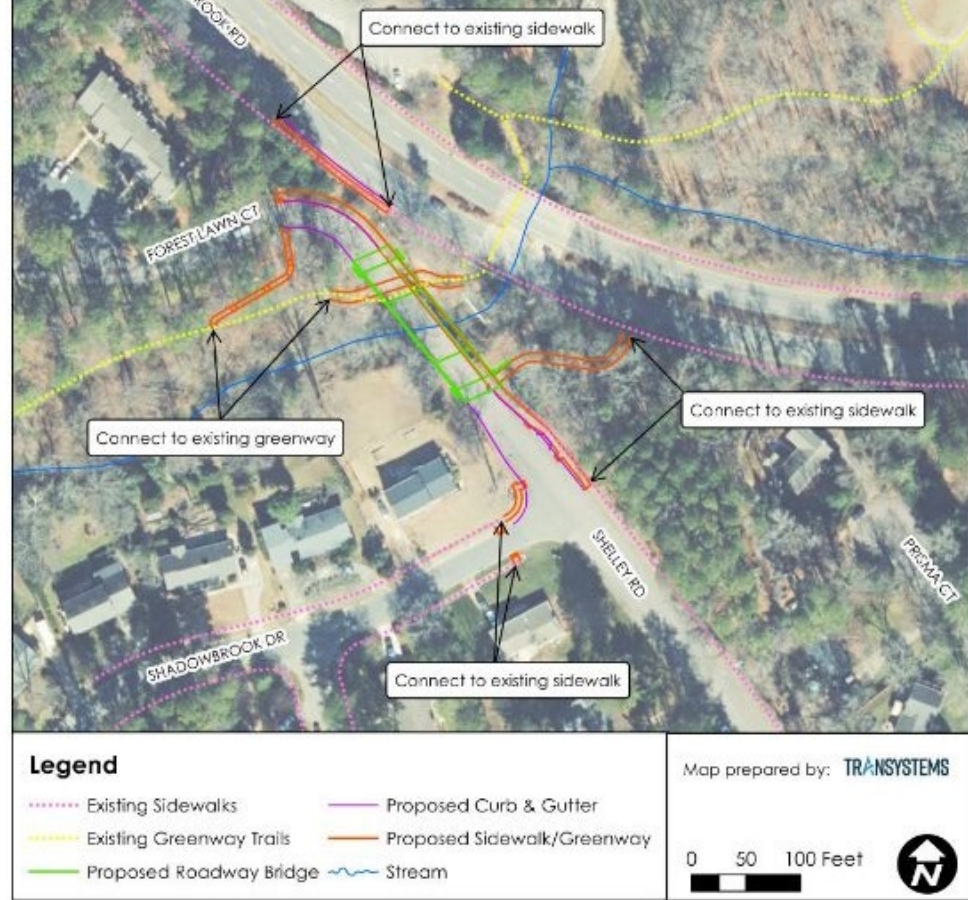


Photo by Transystems

Proposed 10-foot
Greenway path

The image is a technical engineering plan view showing a proposed infrastructure project. It features a network of paths and roads. A prominent orange line represents the 'Proposed 10-foot Greenway path', which runs horizontally across the middle of the plan. A red line indicates a 'Proposed new bridge' crossing a waterway. Blue lines represent 'Proposed 5-foot sidewalks' along various sections of the path. A green rectangle highlights a specific area where the path crosses a road. The plan includes various annotations such as stationing (e.g., 'PT Sta. 10+44.86', 'GW1- PC Sta. 10+16.68'), bearings (e.g., 'S 42.5° W', 'S 59° 18' 33.2" W'), and labels for existing structures like 'CONC STEEL BRIDGE' and 'ABANDONED BRIDGE'. Blue callout boxes with white text are overlaid on the plan, with arrows pointing to the corresponding features.

Proposed 10-foot
sidewalk

Proposed 5-foot
sidewalk

Proposed new
bridge

Proposed 5-foot
sidewalk

Potential Stream Impacts

- Due to federal funding, extensive environmental permitting required
- Minimize impacts to Mine Creek
- Erosion control measures will be in place to protect the creek during construction

Photo by Transystems



Impacts to Biological Species

Aquatic species surveys conducted in 2021 for any threatened or endangered species and found no populations in the area.



Project Schedule

Action	Date
Public Design Meeting	December 12, 2024
Start Right of Way Acquisition	Early 2025
Final Plans	Summer 2025
Advertise for Construction	Fall 2025
Construction Duration	~1 year

We want your feedback

Take our online
survey



Visit our project
website



Sign up for
project updates
send email to

Tiffanie.mazaenk
@raleighnc.gov

Questions?