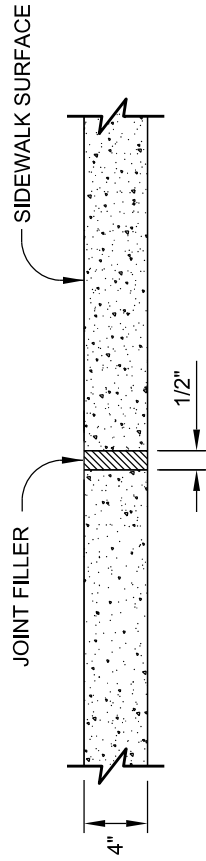
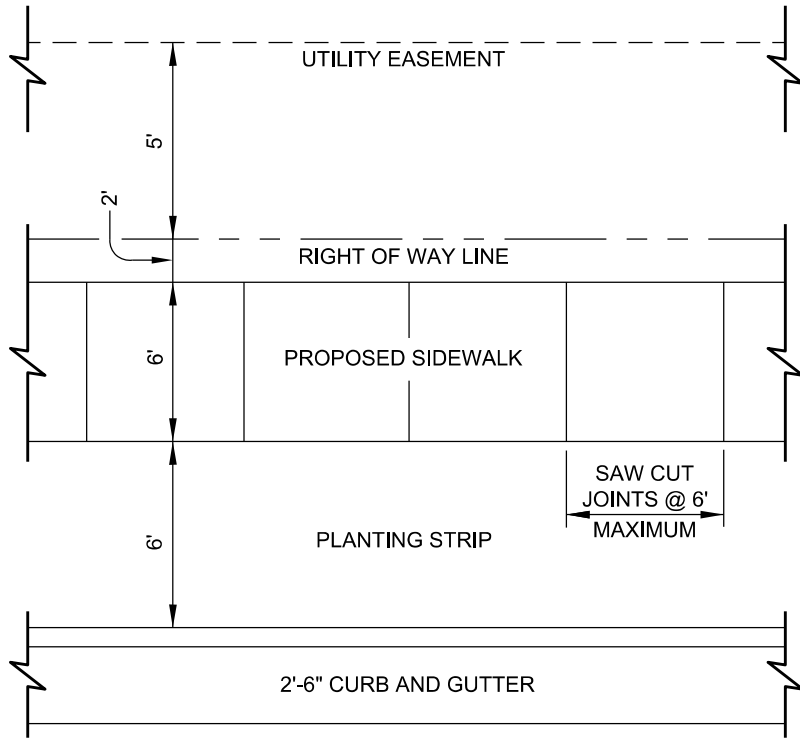


TYPICAL SECTION



TRANSVERSE EXPANSION JOINT



PLAN VIEW

- NOTES:
1. TRANSVERSE EXPANSION JOINTS TO BE A MAXIMUM OF 50 FEET.
 2. ALL CONCRETE TO BE 3000 PSI AND FINISHED WITH CURING COMPOUND.
 3. A 6 INCH DEPTH IS REQUIRED AT LOCATIONS OF DRIVEWAY CROSSINGS, AT STREET INTERSECTIONS (ALONG THE LENGTH OF RADIUS CURB RETURNS), AND IN THE HANDICAP RAMPS.

CITY OF RALEIGH STANDARD DETAIL		
REVISIONS	DATE: 8/2020	NOT TO SCALE
	CONCRETE SIDEWALK	
T-30.01		