



# WAKE BUS RAPID TRANSIT (BRT) NEW BERN AVENUE

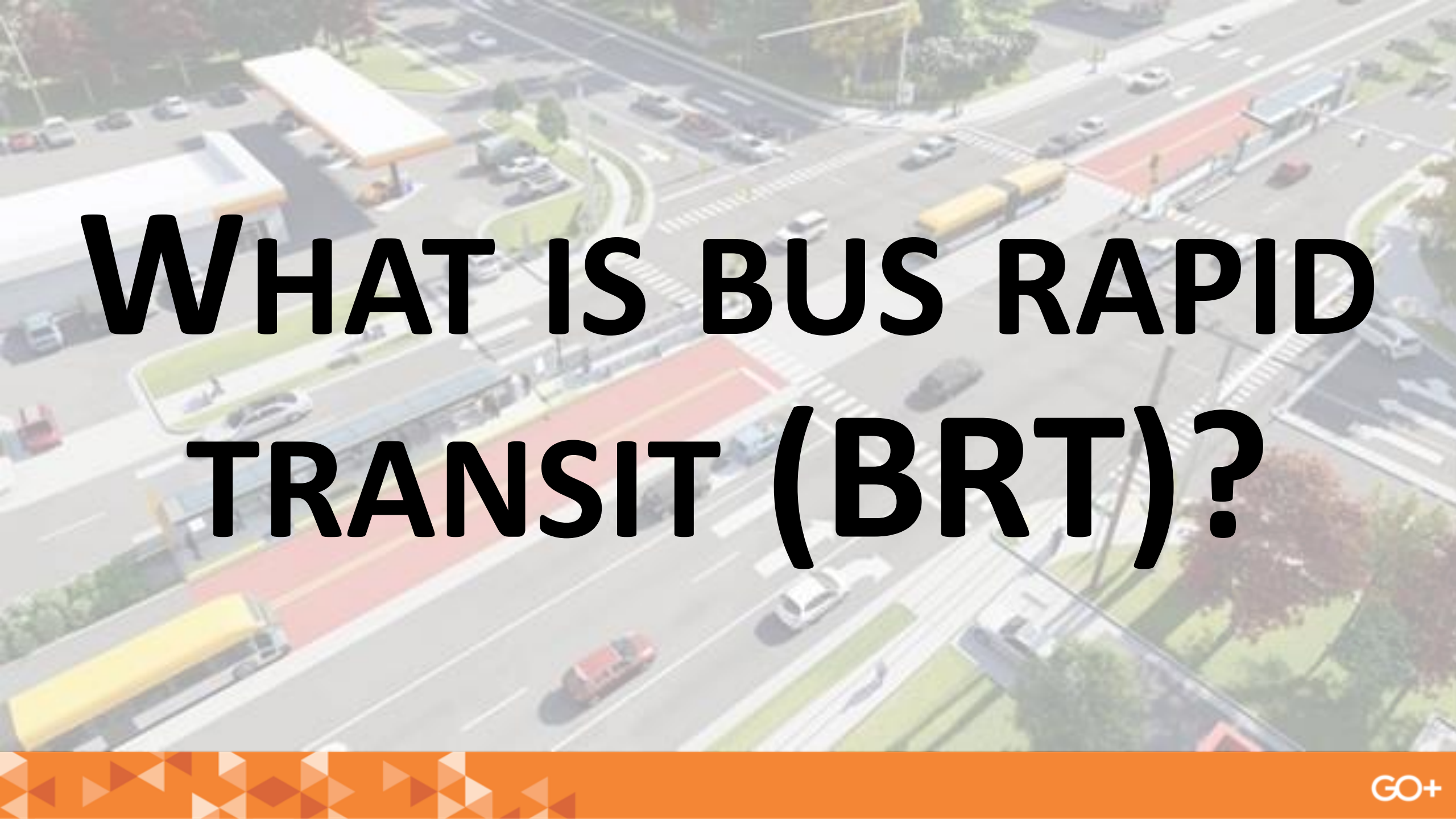
Pre-construction Meeting

August 18, 2025

# AGENDA

- What is Bus Rapid Transit (BRT)?
- Project Overview
- Construction
- Meet the Construction Team
- Stay Informed and Connected



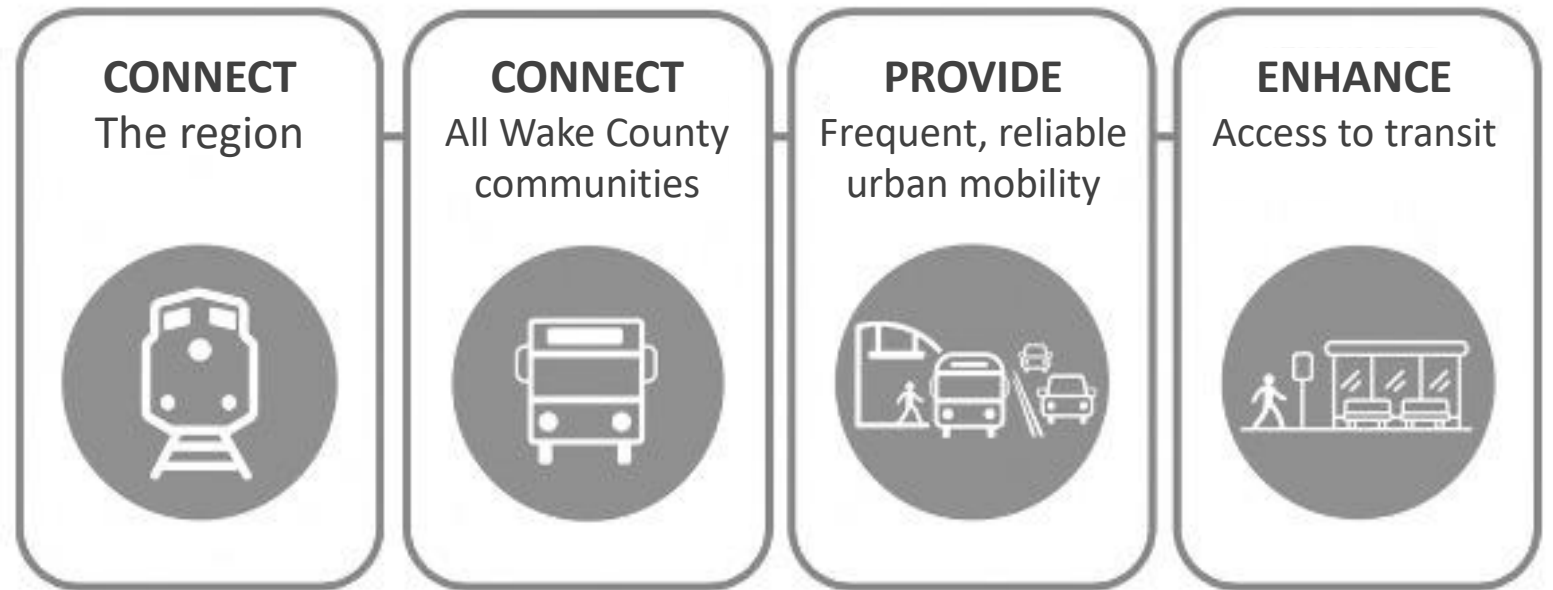
An aerial photograph of a city street intersection. A dedicated bus rapid transit (BRT) lane is highlighted in red, running horizontally across the middle of the frame. Several buses are visible in this lane. To the left of the BRT lane is a gas station with a yellow canopy. To the right is a parking lot and some commercial buildings. The text "WHAT IS BUS RAPID TRANSIT (BRT)?" is overlaid in large, bold, black letters across the center of the image.

# WHAT IS BUS RAPID TRANSIT (BRT)?

# WAKE TRANSIT PLAN | BACKGROUND

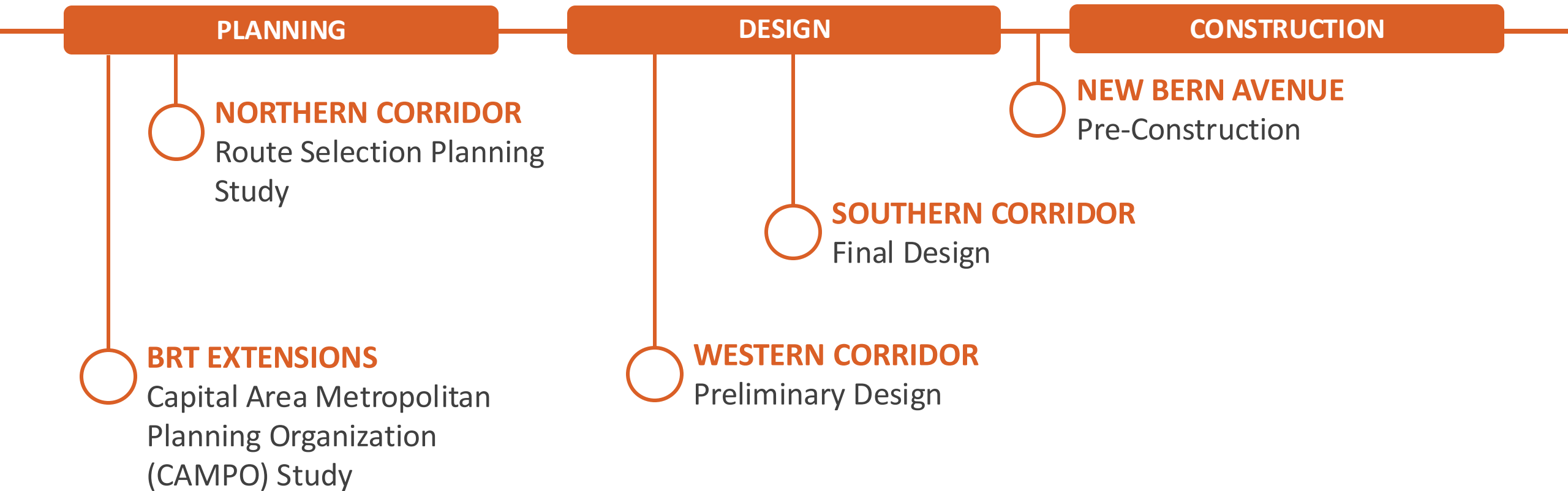
- 2016: Wake County voters approved a transit-dedicated half-cent sales tax investment to expand and better connect the public transit network throughout the county

Four Big Moves →

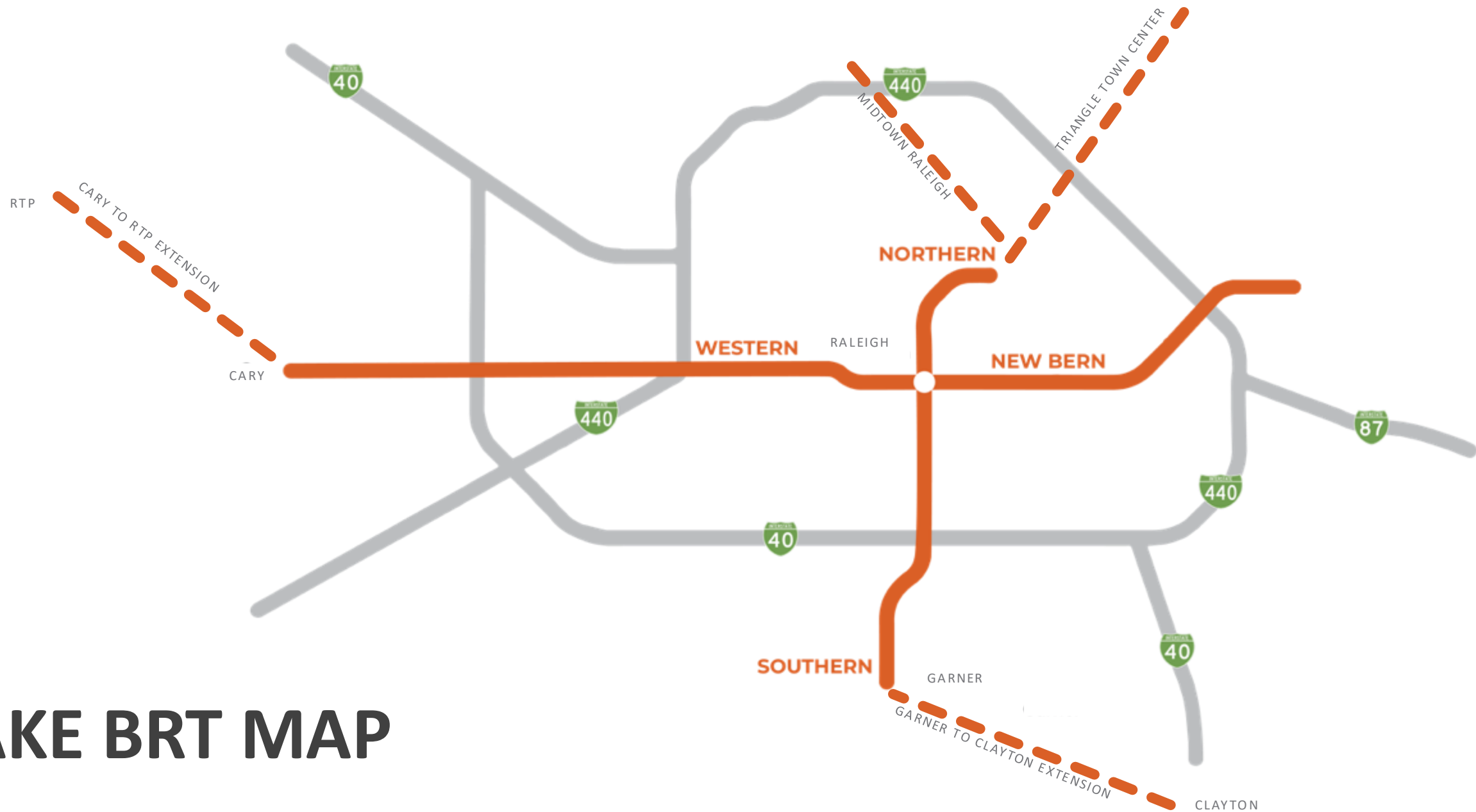




# CORRIDOR PLANNING + PHASES



# WAKE BRT MAP



# FEATURES



DEDICATED LANES



SPAN OF SERVICE



ENHANCED STATIONS



FREQUENT SERVICE



SPECIALIZED VEHICLES



OFF-BOARD FARE COLLECTION



SIGNAL PRIORITY



UNIQUE BRANDING

# GORALEIGH STATION





## EDENTON AT BLOUNT



ADA ACCESS RAMP

WAYFINDING SIGN

LEVEL BOARDING

REAL TIME ARRIVAL

60' ARTICULATED BUS

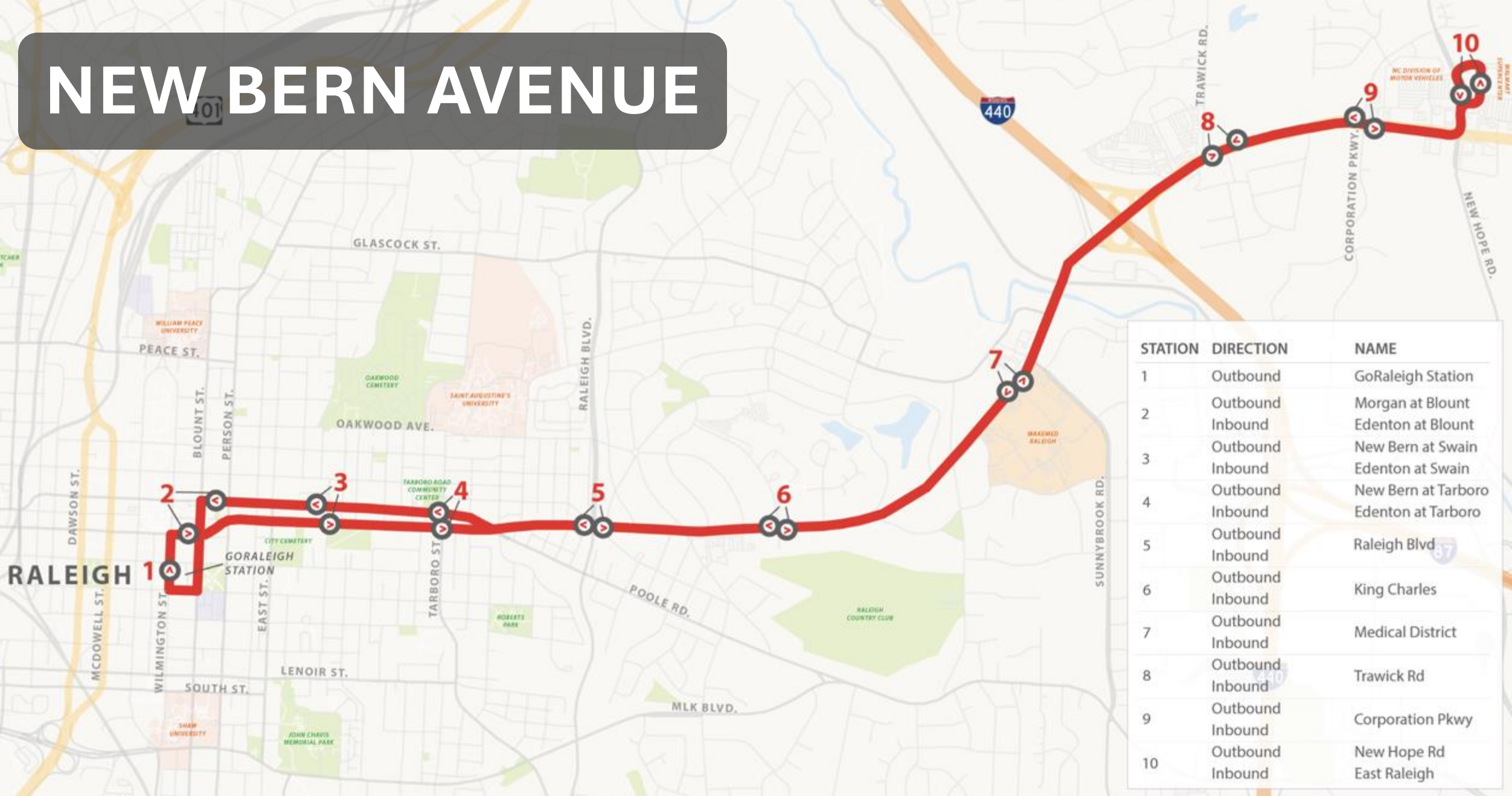
Enhanced station

An aerial, slightly blurred photograph of a highway interchange. A prominent red-paved ramp or lane runs diagonally across the frame. Several vehicles, including cars and large yellow semi-trucks, are visible on the roads. The background shows more of the highway and some greenery.

# PROJECT OVERVIEW



# NEW BERN AVENUE



# Project Areas

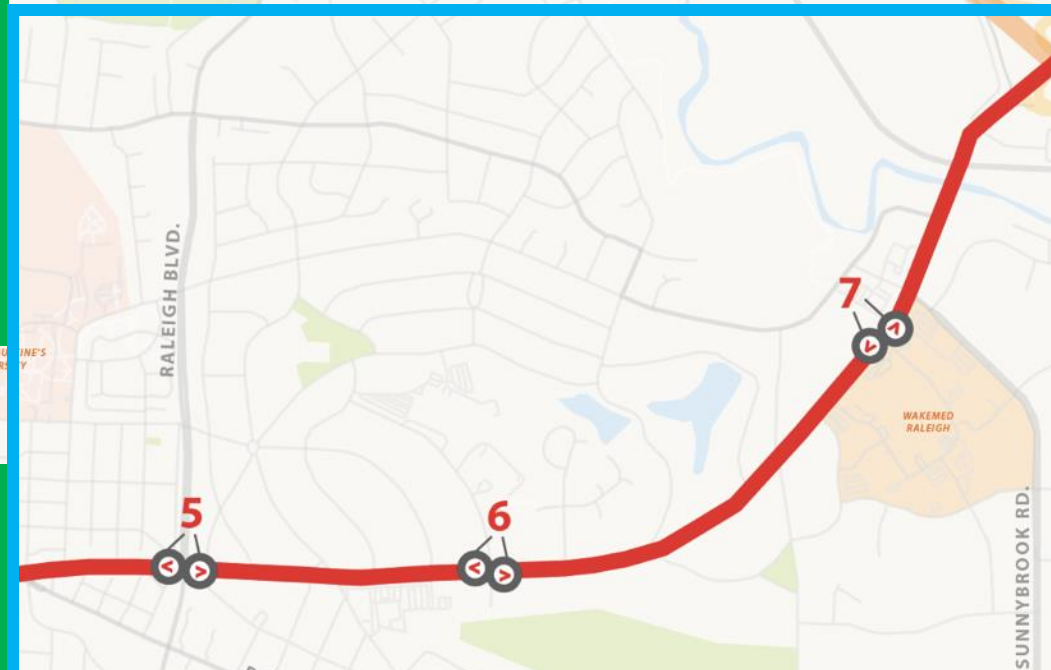
## Construction Package/Area 1

- Downtown Raleigh and one-way pair of New Bern Avenue and Edenton Street



## Construction Package/Area 2

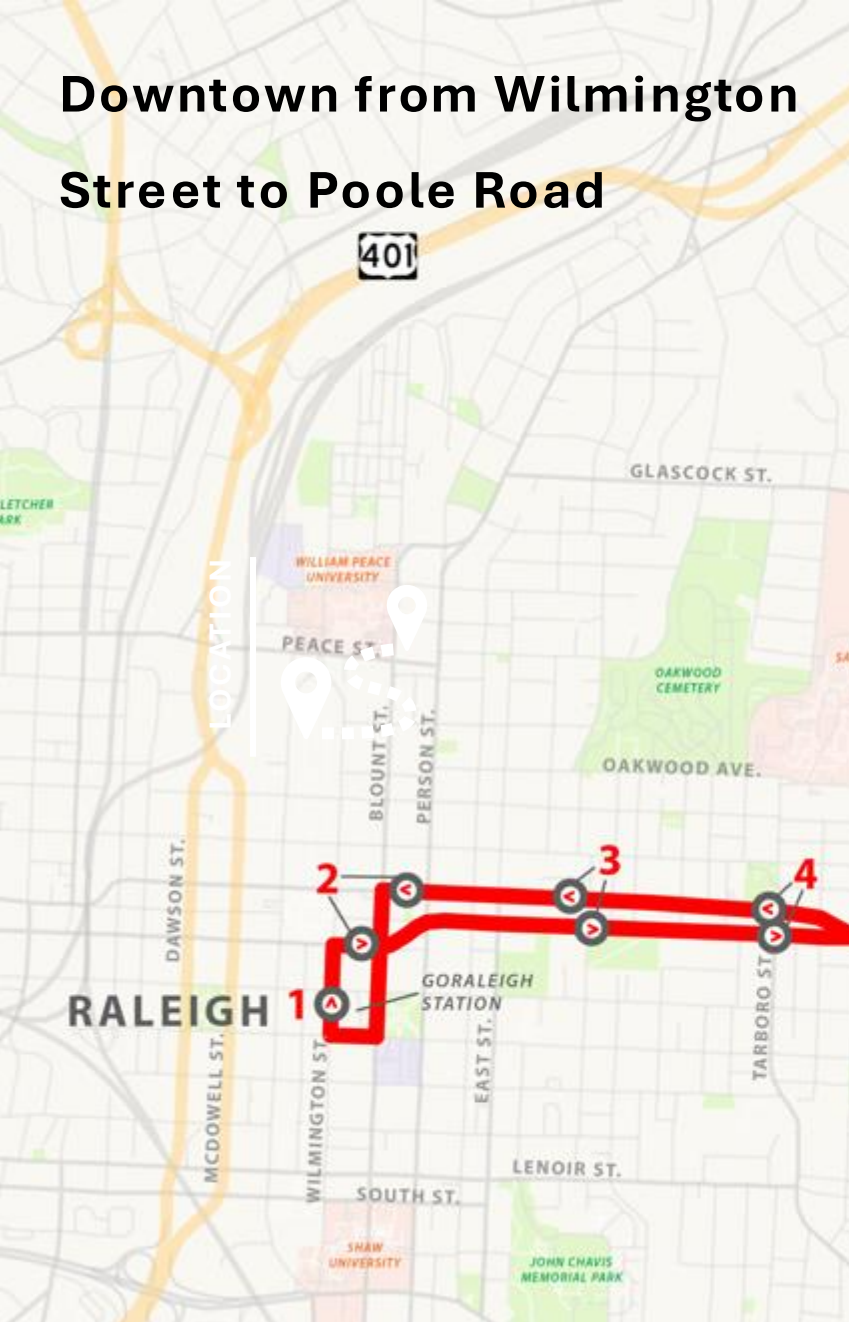
- New Bern Avenue from Poole Road to Sunnybrook Road



STATION	DIRECTION	NAME
1	Outbound	GoRaleigh Station
2	Outbound	Morgan at Blount
	Inbound	Edenton at Blount
3	Outbound	New Bern at Swain
	Inbound	Edenton at Swain
4	Outbound	New Bern at Tarboro
	Inbound	Edenton at Tarboro
5	Outbound	Raleigh Blvd
	Inbound	
6	Outbound	King Charles
	Inbound	
7	Outbound	Medical District
	Inbound	
8	Outbound	Trawick Rd
	Inbound	
9	Outbound	Corporation Pkwy
	Inbound	
10	Outbound	New Hope Rd
	Inbound	East Raleigh



## Downtown from Wilmington Street to Poole Road



## Area One: Right Business Access + Transit

- Roadway resurfacing
- Upgraded utilities
- Full-size stations at the back of the curb
- Lane restriping
- Multi-use path
- Sidewalks
- High-visibility crosswalks



In Area One, BRT stations and buses will be on the right

## Poole Road to Sunnybrook Road



## Area Two: Median Running Transitway

- Full-size stations located in the median
- Road widening + resurfacing
- Curb and gutter
- Sidewalks
- Multi-use path
- High-visibility crosswalks
- Upgraded utilities



In Area Two, BRT buses have stations and lanes in the median



# RALEIGH BLVD



SOLAR PANELS

DEDICATED LANES

MULTI-USE PATH

HIGH-VISIBILITY  
CROSSWALK

DEDICATED LANES



MEDICAL DISTRICT



PYLON

ART

ART

MULTI-USE PATH

SIDEWALK



An aerial, isometric-style illustration of a highway interchange. A multi-lane highway runs diagonally from the bottom left towards the top right. A red-paved construction area or lane runs parallel to the highway on the left side. Several vehicles, including cars and large yellow semi-trucks, are visible on the road. In the background, there are gas stations with white canopies, parking lots, and some trees. The word "CONSTRUCTION" is overlaid in large, bold, black capital letters across the center of the image.

# CONSTRUCTION

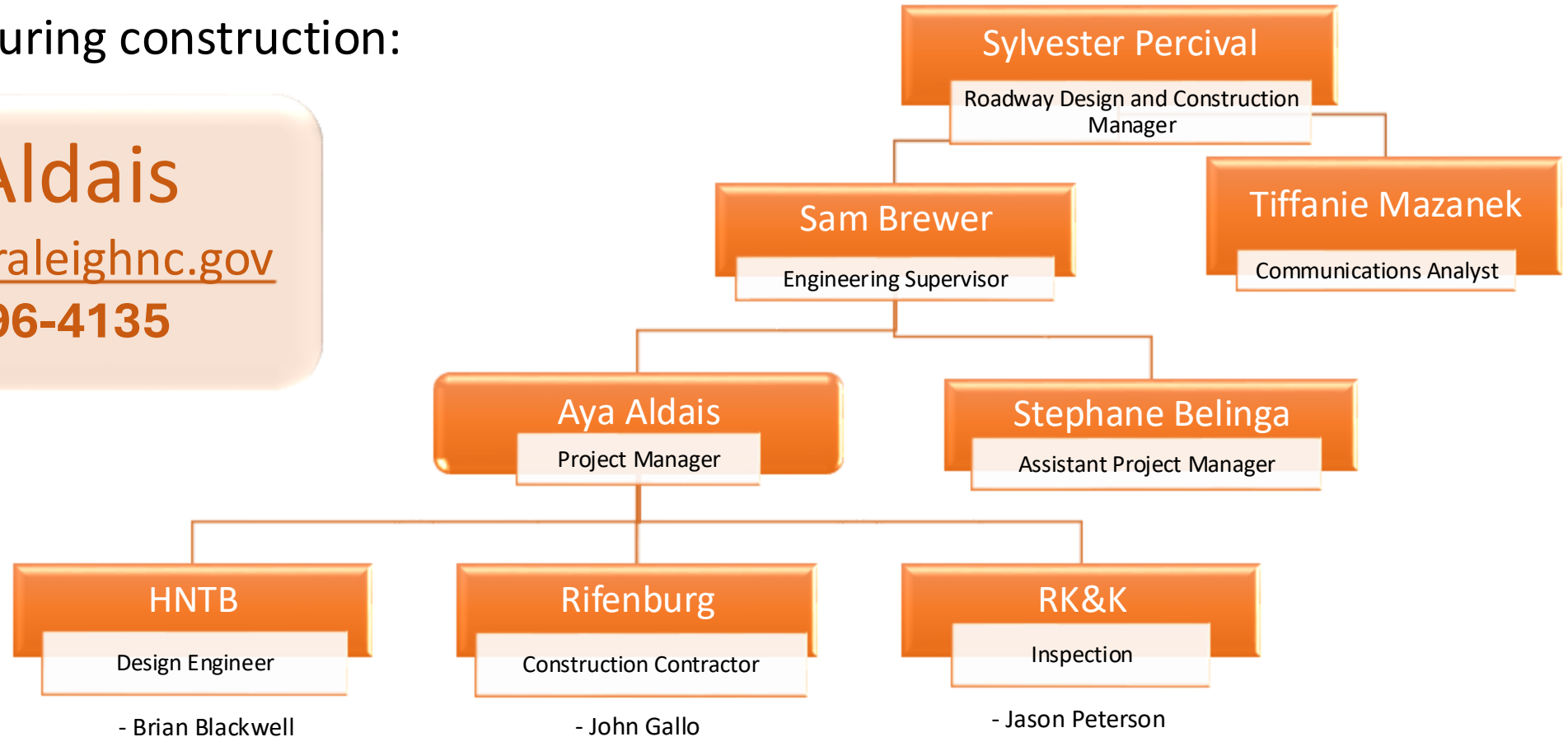
# MEET THE CONSTRUCTION TEAM

Who to contact during construction:

**Aya Aldais**

[Aya.Aldais@raleighnc.gov](mailto:Aya.Aldais@raleighnc.gov)

**(919) 996-4135**



# AREA 1: PROPOSED TIMELINE: (~30 MONTHS)

*NEW BERN AVE FROM S WILMINGTON STREET TO POOLE ROAD*

Area One	Start	End	Time
Phase one	4th Quarter 2025	4th Quarter 2027	589 days
Phase two	2nd Quarter 2027	3rd Quarter 2027	112 days
Phase three	3rd Quarter 2027	4th Quarter 2027	47 days



# AREA ONE: CONSTRUCTION DETAILS

- No full road closures expected
- Multi-lane closures keep the work moving!
- One lane open at all time!
- Driveway impacts will be coordinated ahead of time
- Homes and businesses will remain accessible to the community





## AREA 2: PROPOSED TIMELINE: (~42 MONTHS)

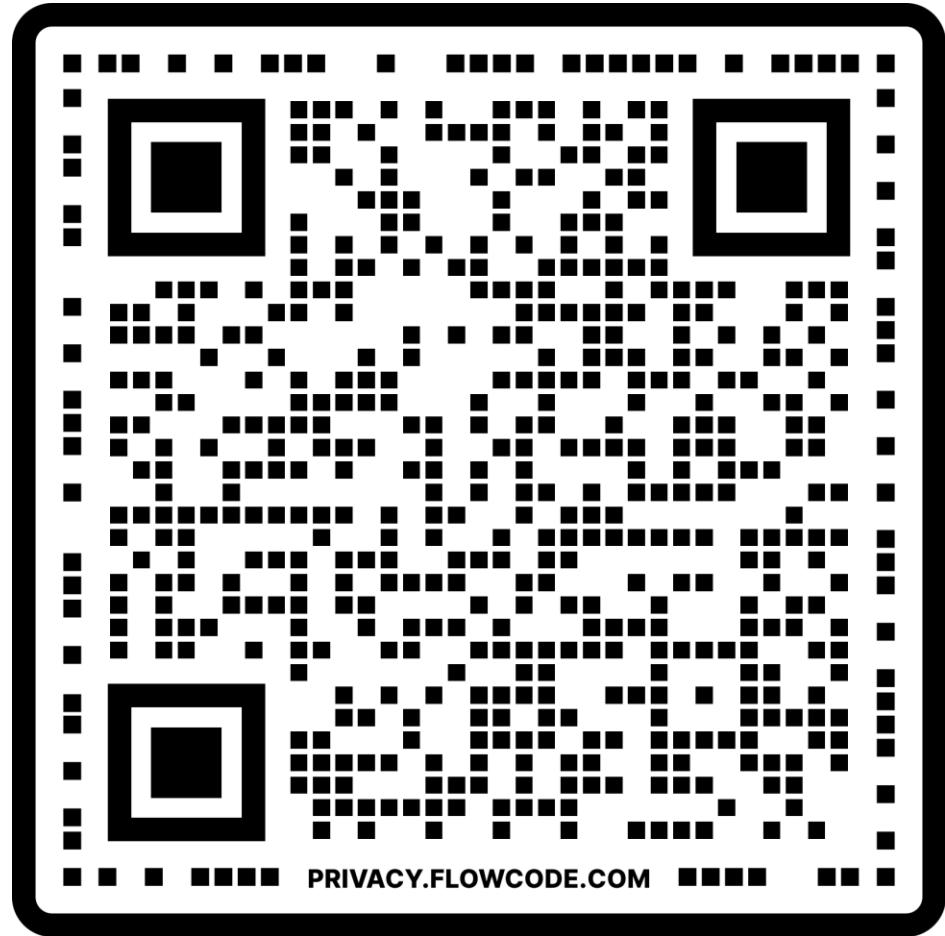
### *NEW BERN AVE FROM POOLE ROAD TO SUNNYBROOK ROAD*

Area Two	Start	End	Time
Phase one	1st Quarter 2026	4th Quarter 2027	600 days
Phase two	4th Quarter 2027	4th Quarter 2028	375 days
Phase three	3rd Quarter 2028	2nd Quarter 2029	270 days
Phase four	1st Quarter 2029	3rd Quarter 2029	200 days

- Construction details for package two will be on our website after a contractor is selected.

# STAY INFORMED + CONNECTED

Scan to visit  
our project  
website →



<https://raleighnc.gov/projects/wake-brt-new-bern-avenue-design-and-construction>

# STAY INFORMED + CONNECTED

- Mailed notice to neighbors and businesses
- Subscribe! Sign up for **Raleigh Transportation Project Updates** to hear the latest on all things Transportation
- Follow us on social media

Aya Aldais, Project Manager  
[aya.aldais@raleighnc.gov](mailto:aya.aldais@raleighnc.gov)  
919-996-4135





# THANK YOU!

We appreciate your cooperation and partnership as we work together to make this project a success for the entire community.

