

Department of Transportation
Transit Division

Transit & GIS

City of Raleigh, Transit Division

Ryan Boivin
Morgan L. Simmons
Matthew Van Hoeck
David Walker



Raleigh



GoRaleigh General Information

- ✓ Located in **Raleigh, NC**
- ✓ **38 Routes** in the System
- ✓ **Operating 7-days a week, except for Thanksgiving and Christmas**
- ✓ **100+** Transit Vehicle Fleet
- ✓ **Over 5 million** passenger trips annually*



* We anticipate passenger trips in CY 2020 to be lower due to the COVID-19 pandemic

GoRaleigh has experienced expansions since 2019

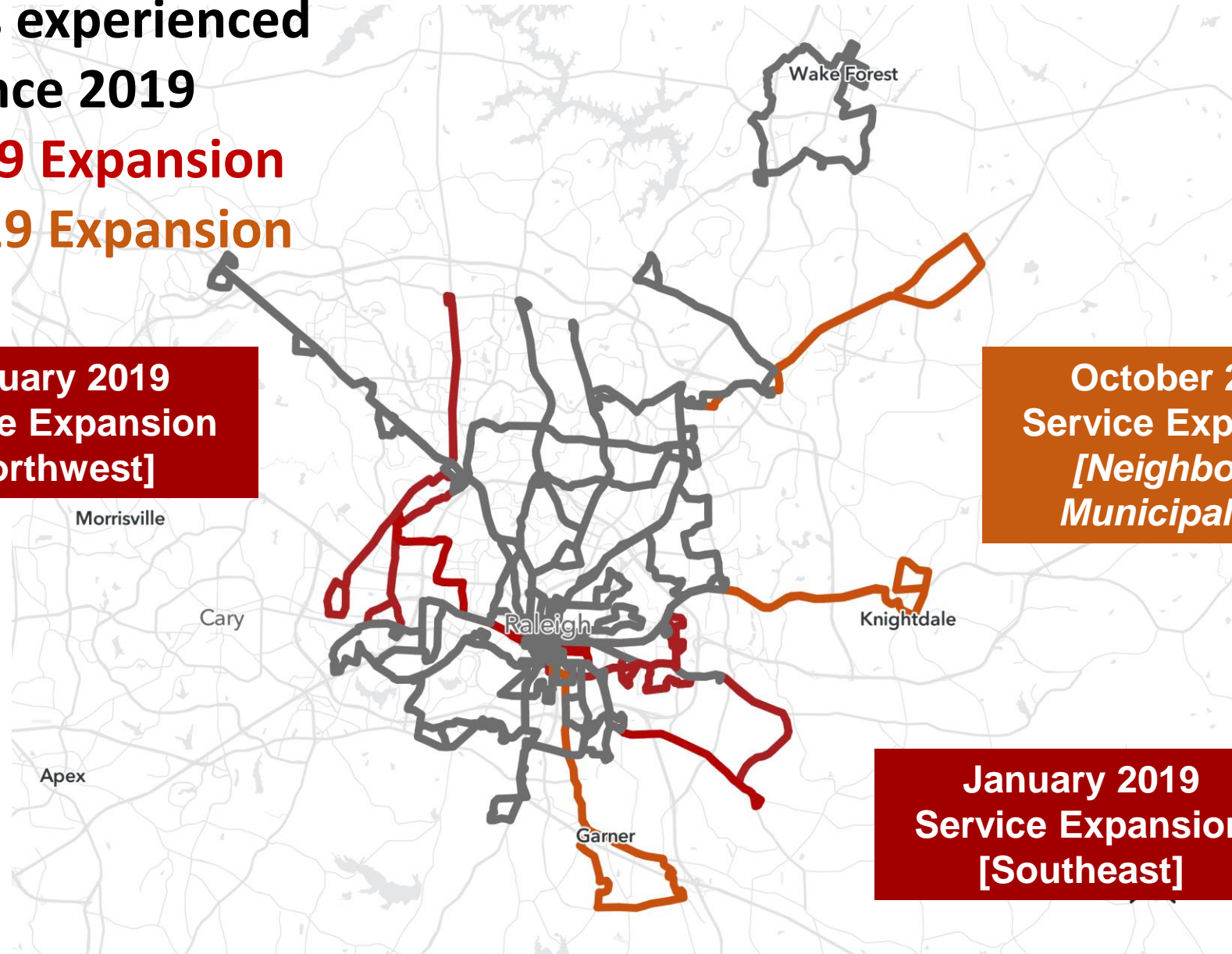
✓ January 2019 Expansion

✓ October 2019 Expansion

January 2019
Service Expansion
[Northwest]

October 2019
Service Expansion
*[Neighboring
Municipalities]*

January 2019
Service Expansion
[Southeast]

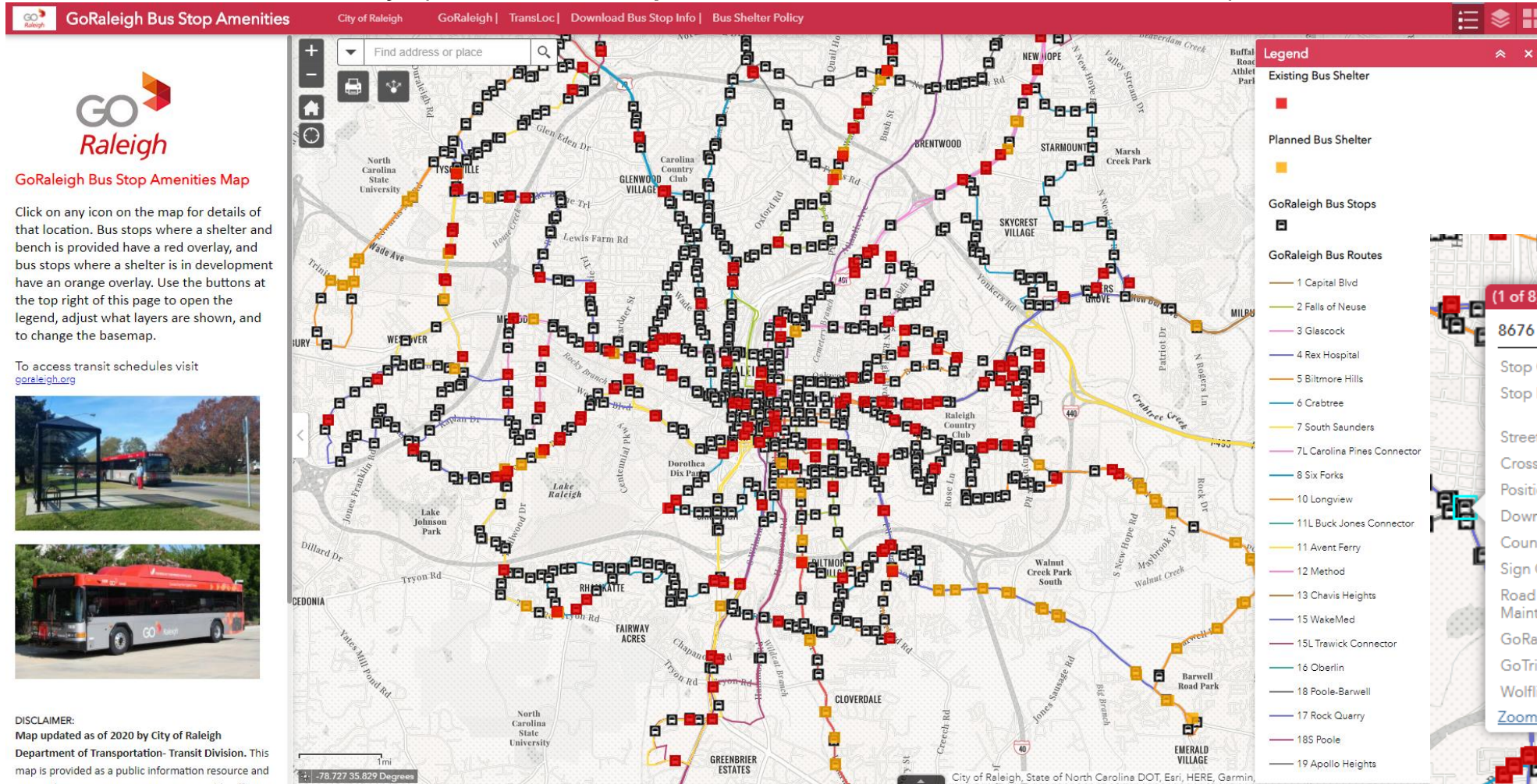


GIS Tools used in Transit....



GIS Tools: Bus Stop Amenities Map

This public facing map shows the passenger amenities development throughout the community (current and planned shelters, benches, etc.)



For More Information,
Click Here

[Bus Stop Amenities Map link](#)

GIS Tools: Trip Planning Tools

These accessible applications aid in planning your next trip. Both Transloc and Google information can be accessed by computer, phone and apps.

For More Information,
Click Here

[TransLoc link](#)

[Google Maps link](#)

The collage displays three different GIS and transit planning tools. The leftmost image is a screenshot of the TransLoc application, showing a map of Raleigh, North Carolina, with various bus routes color-coded. A sidebar on the left lists routes such as 'Capital Blvd', 'Falls of Neuse', and 'GoTriangle'. The middle image is a screenshot of a mobile application interface for 'GoRaleigh Station, South Blount', displaying a street view, station details, and a bus schedule table. The rightmost image is a screenshot of a Google Maps view of the same area, showing local businesses, landmarks, and street names.

Buses	1	2	3
1	1	2	3
2	4	5	6
3	7	8	9
4	10	11	12
5	13	14	15
6	16	17	18
7	19	20	21
8	22	23	24
9	25	26	27
10	28	29	30
11	31	32	33
12	34	35	36
13	37	38	39
14	40	41	42
15	43	44	45
16	46	47	48
17	49	50	51
18	52	53	54
19	55	56	57
20	58	59	60
21	61	62	63
22	64	65	66
23	67	68	69
24	70	71	72
25	73	74	75
26	76	77	78
27	79	80	81
28	82	83	84
29	85	86	87
30	88	89	90
31	91	92	93
32	94	95	96
33	97	98	99
34	100	101	102

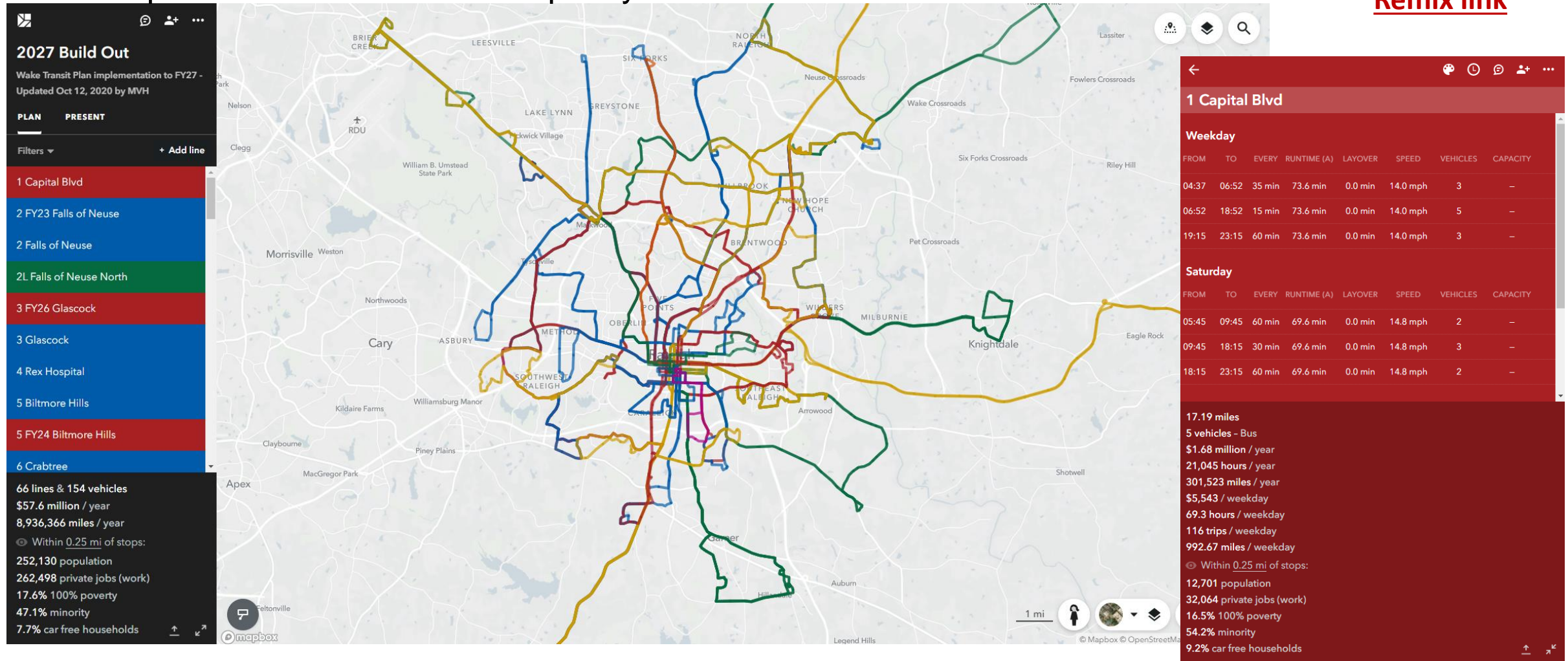
GIS Tools: Route Planning Tools

Transit staff uses Remix to develop/modify routes and determine it's operational and financial capacity.

For More Information,
Click Here



[Remix link](#)

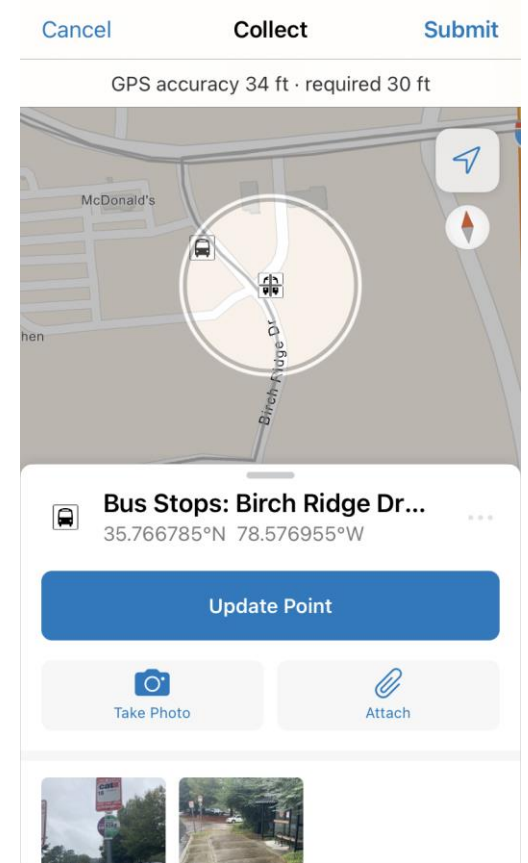
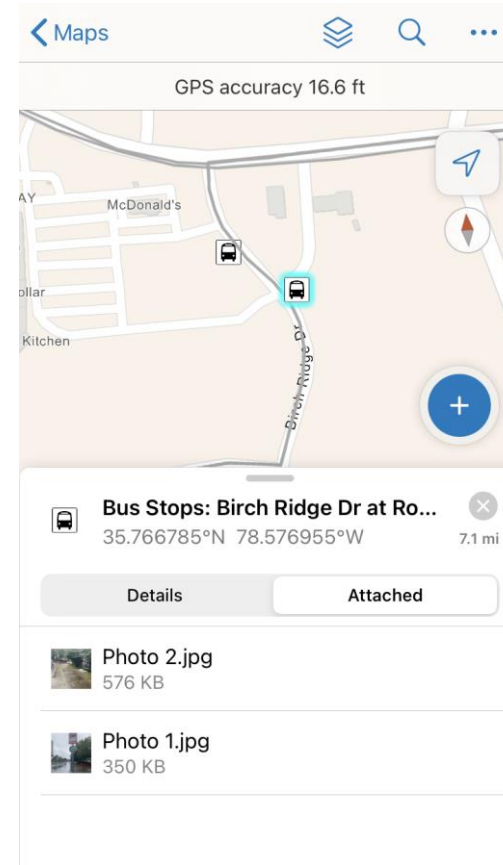
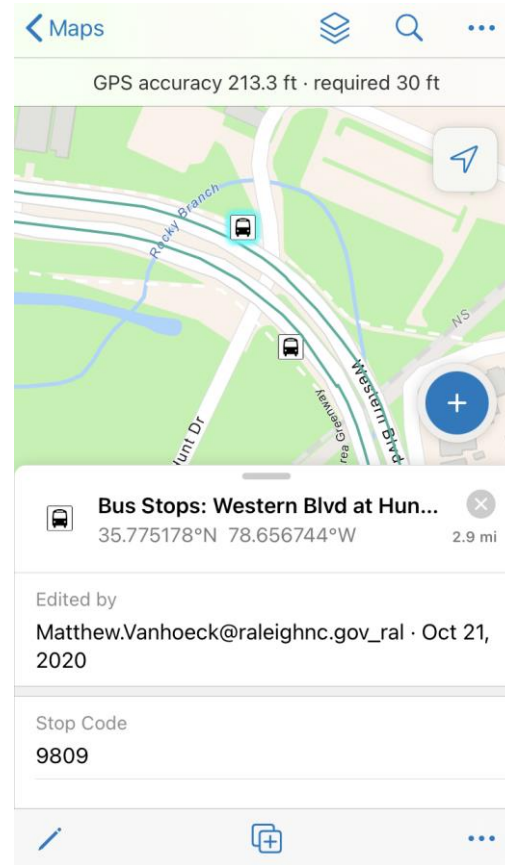
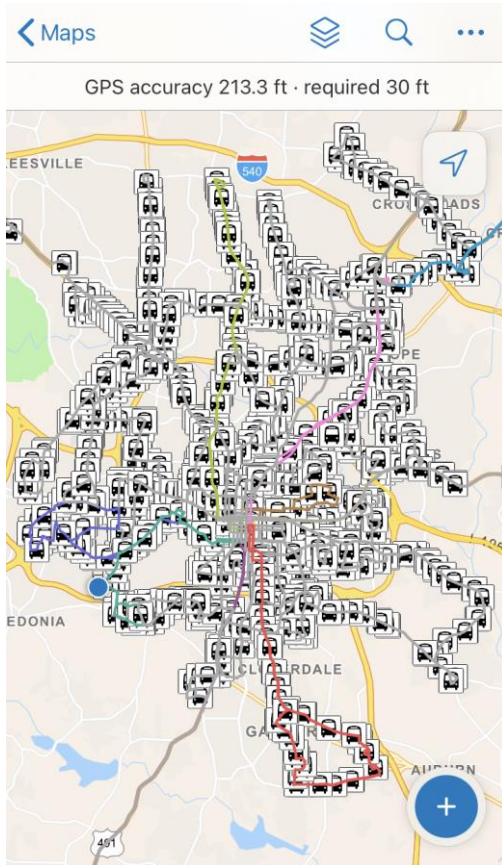


GIS Tools: Arc Collector, In Field App

ArcCollector is a mobile collection application used to streamline updates to passenger amenities, while out in the field.

For More Information,
Click Here

[General Info about
ArcCollector](#)



GIS Tools: Arc Collector, In Field App

Bus Stops: Birch Ridge Dr at Ro... 35.766785°N 78.576955°W 7.1 mi

Details Attached

Stop Code
9282

Stop Name
Birch Ridge Dr at Rock Bridge Rd

Sign Type
CAT

Bus Zone
No

Landing Pad
Yes

Trash Can
Yes

Bus Stops: Birch Ridge Dr at Ro... 35.766785°N 78.576955°W 7.1 mi

Details Attached

Trash Can Type
Concrete Mounted

Trash Can Count
1

Amenity Pad
Yes

Pad Size
6' by 20'

Bench
Yes

Bench Type
Improved

Bus Stops: Birch Ridge Dr at Ro... 35.766785°N 78.576955°W 7.1 mi

Details Attached

Non-compliant

Sidewalk
Yes

Curb Ramp
Yes

Crosswalk
No

Pedestrian Signal
No

Bike Rack
No

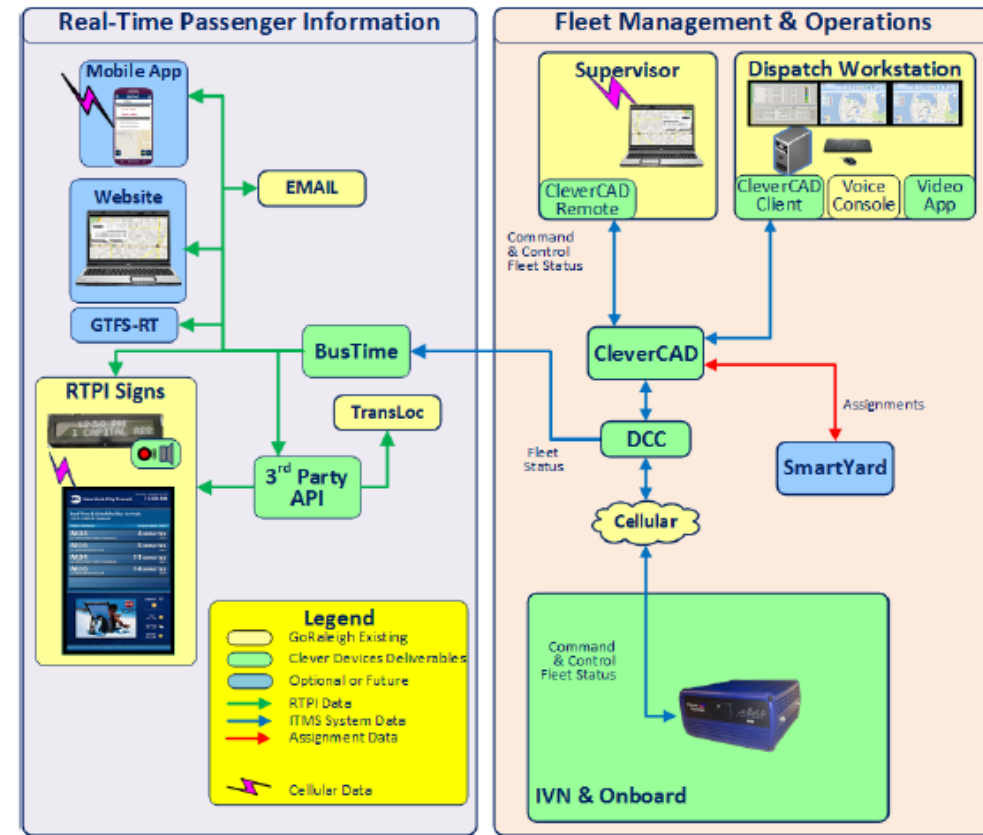
Bike Lane
No

For More Information,
Click Here

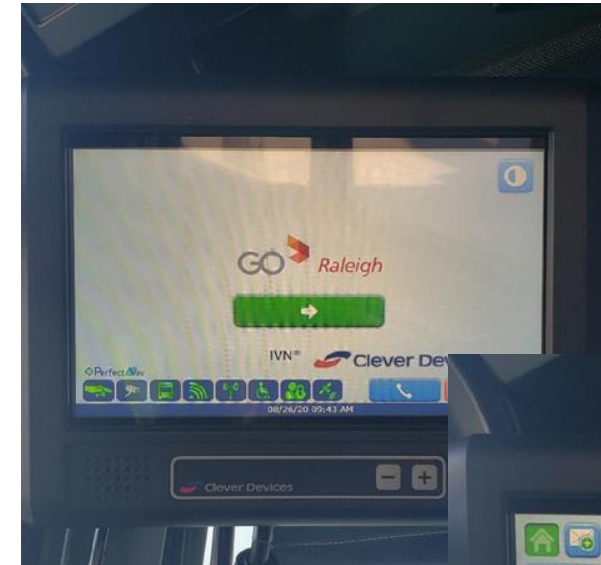
[General Info about
ArcCollector](#)

GIS Tools: Transit Operations Applications

Clever Devices provides dispatch communication, on-board 'turn-by-turn' for operators and better inventory management. This operational information is better connected to the public-facing trip planning website, which will be launched in the near future.



GIS Tools: Transit Operations Applications



What's Next for Transit

- ❑ **Finalizing Data Model** *to better connect all current and future GIS applications*
- ❑ **Integration of ArcGIS Insights** *to aid in route planning and engagement opportunities (Post-COVID)*
- ❑ **Continuing to explore more opportunities** *as they arise*

Thanks for visiting the Transit Table!

City of Raleigh, Transit Division

Ryan Boivin
Ryan.Boivin@raleighnc.gov

Morgan L. Simmons
Morgan.Simmons@raleighnc.gov

Matthew Van Hoeck
Matthew.VanHoeck@raleighnc.gov

David Walker
David.Walker@raleighnc.gov

