

**August 12, 2022**

**Re: Notice of Neighborhood Meeting**

Neighboring Property Owners and Residents:

You are invited to attend a neighborhood meeting on August 23, 2022, from 6-7pm at the Pullen Park Community Center, located at 408 Ashe Avenue, Raleigh, NC 27606. The purpose of the meeting is to discuss an upcoming application to rezone a parcel of land located at 849 W. Morgan Street, Raleigh, NC 27603 (PIN: 1703282980) (the "Site"). The Site is currently zoned Office Mixed Use- 5 stories- Urban Limited Frontage- w/ Special Residential Parking Overlay District (OX-5-UL- w/ SRPOD), and this proposal would rezone the Site to Commercial Mixed Use- 5 stories- Urban Limited Frontage- w/ Special Residential Parking Overlay District (CX-5-UL- w/ SRPOD). During the meeting, the applicant will describe the nature of the proposed rezoning request and field any questions from the public. Enclosed are: (1) a vicinity map outlining the location of the parcel; and (2) a current zoning map of the subject area.

Prior to the submittal of any rezoning application, the City of Raleigh requires that a neighborhood meeting be held for all property owners and tenants within 500 feet of the area requested for rezoning. Any landowner or tenant who is interested in learning more about this project is invited to attend. Information about the rezoning process is available online; visit [www.raleighnc.gov](http://www.raleighnc.gov) and search for "Rezoning Process." If you have further questions about the rezoning process, please contact:

Sarah Shaughnessy  
Raleigh Planning & Development  
(919) 996-2634  
[sarah.shaughnessy@raleighnc.gov](mailto:sarah.shaughnessy@raleighnc.gov)

If you have any questions about this rezoning, please contact me at (919) 835-4023 or via email at [markfrederick@parkerpoe.com](mailto:markfrederick@parkerpoe.com).

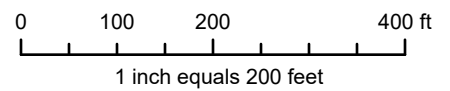
Thank you,

Mark D. Frederick

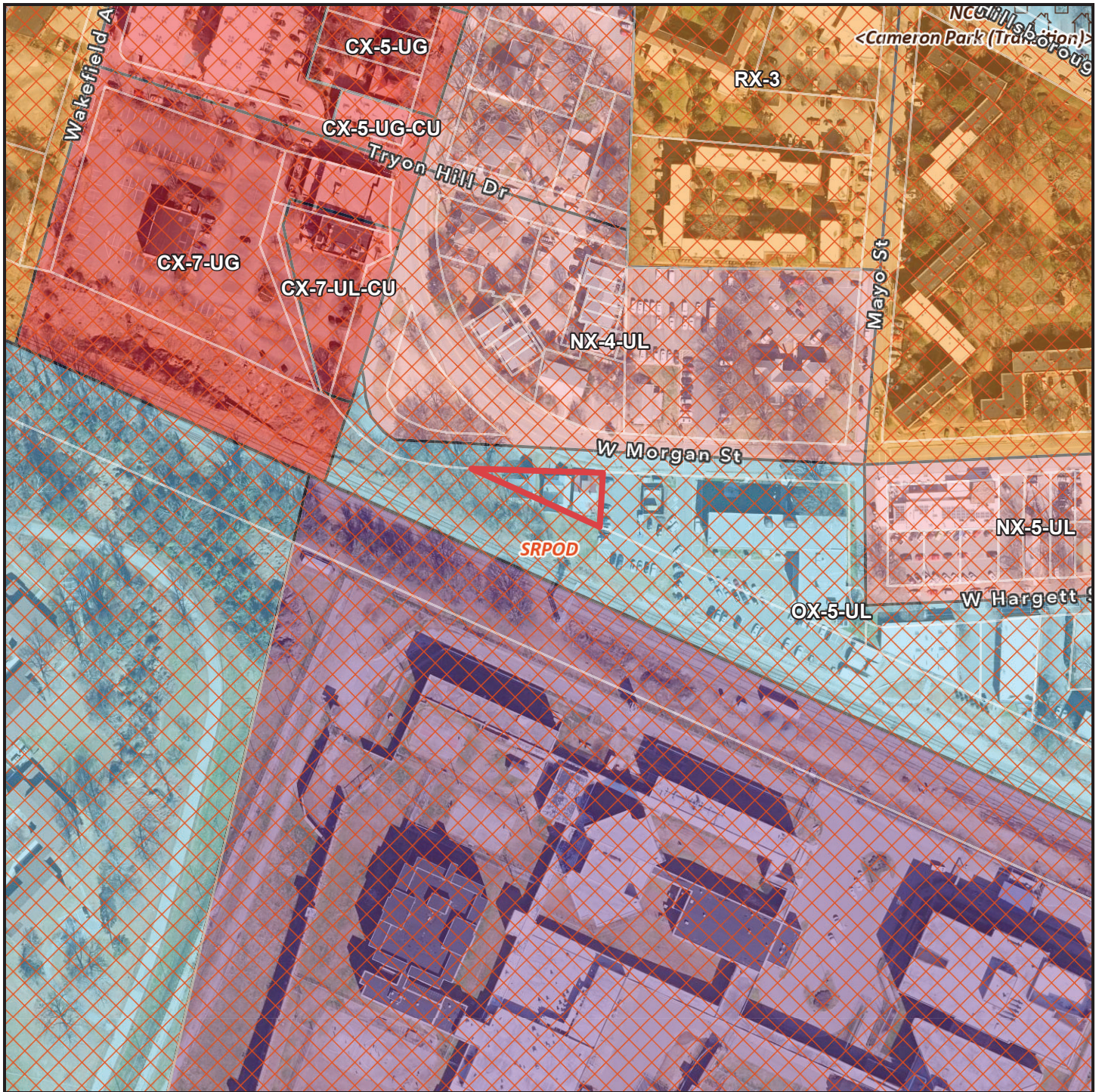


# 849 W. Morgan Street

## Vicinity Map



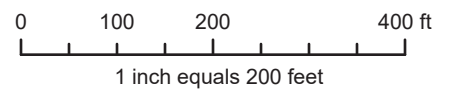
**Disclaimer**  
iMaps makes every effort to produce and publish the most current and accurate information possible. However, the maps are produced for information purposes, and are **NOT** surveys. No warranties, expressed or implied, are provided for the data therein, its use, or its interpretation.



**849 W. Morgan Street**

**Zoning Map**

**Current Zoning:  
OX-5-UL- w/ SRPOD**



**Disclaimer**  
iMaps makes every effort to produce and publish the most current and accurate information possible. However, the maps are produced for information purposes, and are **NOT** surveys. No warranties, expressed or implied, are provided for the data therein, its use, or its interpretation.