



Date: May 3, 2023

Re: Potential Rezoning Change
902 & 916 Nowell Road, Raleigh, NC

Neighboring Property Owners and Tenants,

You are invited to attend a neighborhood meeting on May 23, 2023 at 5:30-7:30 pm. The meeting will be held at **Westover United Methodist Church, 300 Powell Drive, Raleigh** and will begin at 5:30 pm.

The purpose for this meeting is to discuss a potential rezoning of the property located at 902 and 916 Nowell Road on the east side of the road north of its intersection with Nowell Point Drive. The site is currently zoned R-4 and is proposed to be rezoned to RX-4-PL Conditional District. Project details will be presented at the meeting. (see attached maps)

Prior to submitting any rezoning application, the City of Raleigh requires that a neighborhood meeting be held for all property owners and tenants within 500 feet of the area requested for rezoning.

Information about the rezoning process is available online; visit www.raleighnc.gov and search for "Rezoning Process". If you have further questions about the rezoning process, please contact Raleigh Planning & Development at 919-996-2682 (option 2) or rezoning@raleighnc.gov

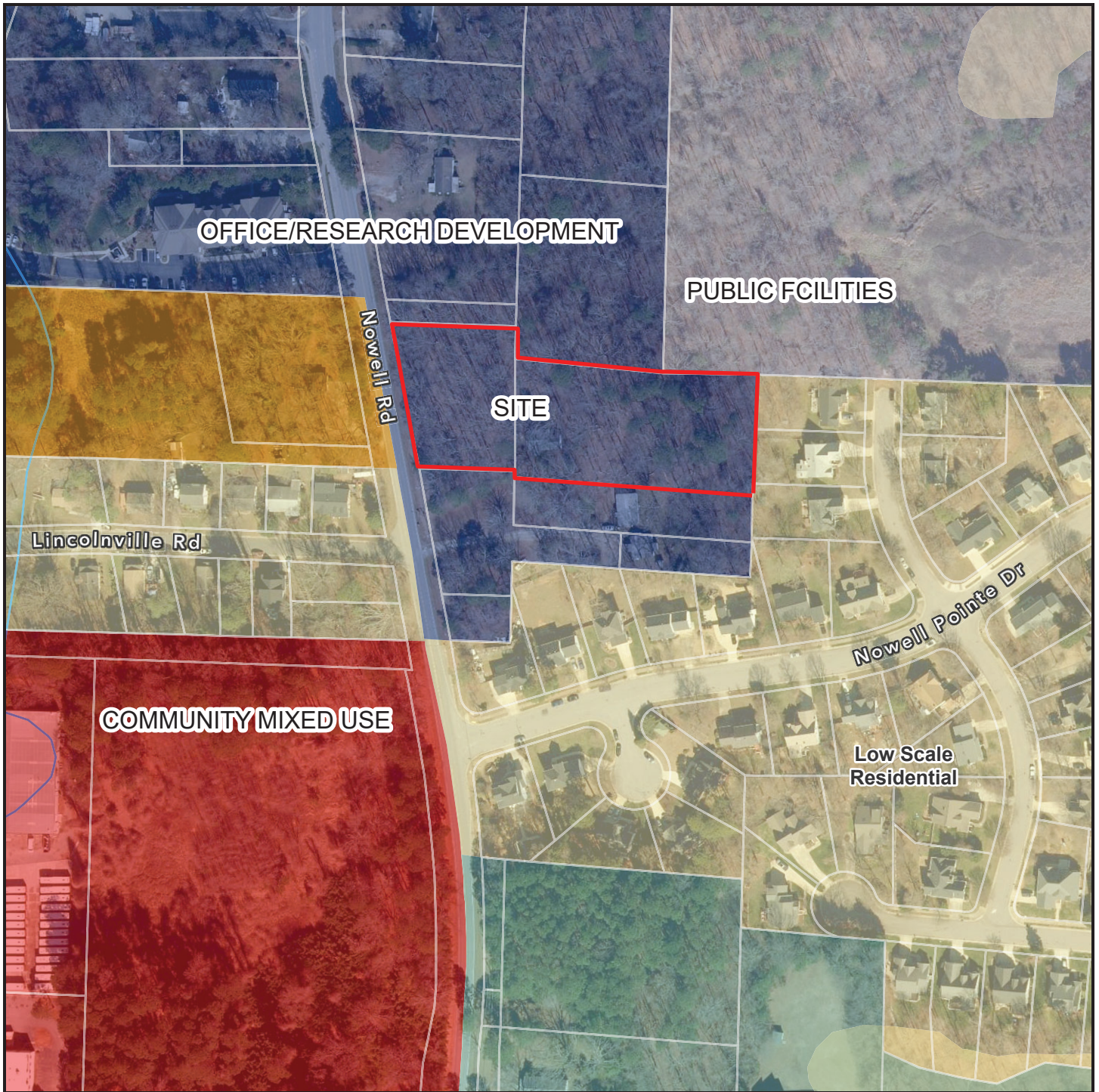
If you have any concerns or questions about this potential rezoning I can be reached at;

Tony M. Tate, PLA
TMTLA Associates
O: 919-484-8880
Email tony@tmtla.com

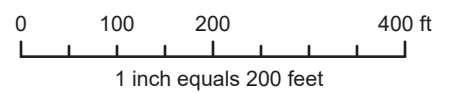
Sincerely,






A handwritten signature in blue ink, appearing to read 'Tony M. Tate'.

Tony M. Tate, PLA

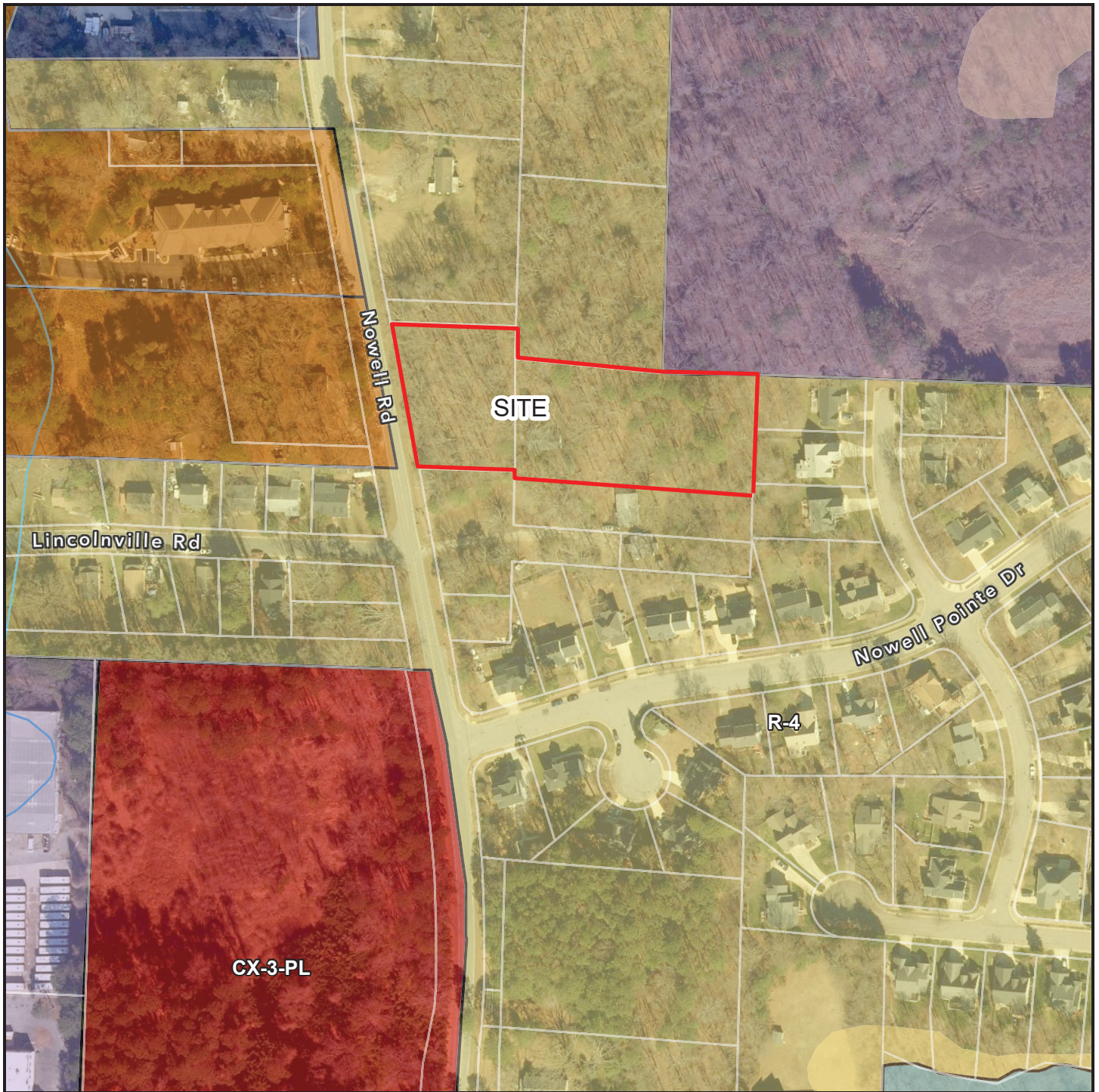


902 & 916 NOWELL COMPREHENSIVE PLAN

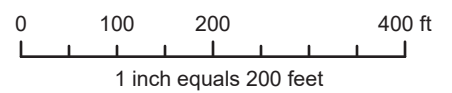


Map Notes	
	Override 1
	Property
	Community Mixed Use
	Low Scale Residential
	Medium Scale Residential

Disclaimer
*iMaps makes every effort to produce and publish the most current and accurate information possible. However, the maps are produced for information purposes, and are **NOT** surveys. No warranties, expressed or implied, are provided for the data therein, its use, or its interpretation.*



902 & 916 NOWELL EXISTING ZONING



Disclaimer
iMaps makes every effort to produce and publish the most current and accurate information possible. However, the maps are produced for information purposes, and are NOT surveys. No warranties, expressed or implied, are provided for the data therein, its use, or its interpretation.