

July 10, 2023

Re: Notice of Neighborhood Meeting

Neighboring Property Owners and Residents:

You are invited to attend a neighborhood meeting on July 20, 2023, from 6:30-7:30pm in the Pioneer Building at the Method Park Community Center, located at 514 Method Road, Raleigh, NC 27607. The purpose of the meeting is to discuss Z-28-23, a requested rezoning of a parcel of land located at 3725 Harden Road (PIN: 0785707779) (the “Site”).

The Site is currently zoned Residential-4 (R-4), and is proposed to be rezoned to Neighborhood Mixed Use- 7 Stories- w/ Conditions (NX-7-CU). During the meeting, the applicant will describe the nature of the request and field any questions from the public. Enclosed are: (1) a vicinity map outlining the location of the Site; and (2) a current zoning map of the subject area.

This meeting is an abbreviated update to the initial neighborhood meeting held on May 17, 2023 in order to clarify the proposed zoning district as Neighborhood Mixed Use (NX), not Office Mixed Use (OX). Any landowner or tenant who is interested in learning more about this case is invited to attend. Information about the rezoning process is available online; visit www.raleighnc.gov and search for “Rezoning Process.” If you have further questions about the rezoning process, please contact:

Hannah Reckhow
Raleigh Planning & Development
(919) 996-2622
hannah.reckhow@raleighnc.gov

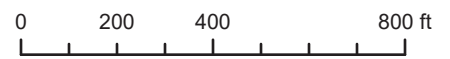
If you have any questions about this request, please contact me at (919) 835-4529 or via email at jamieschwedler@parkerpoe.com.

Thank you,

Jamie Schwedler



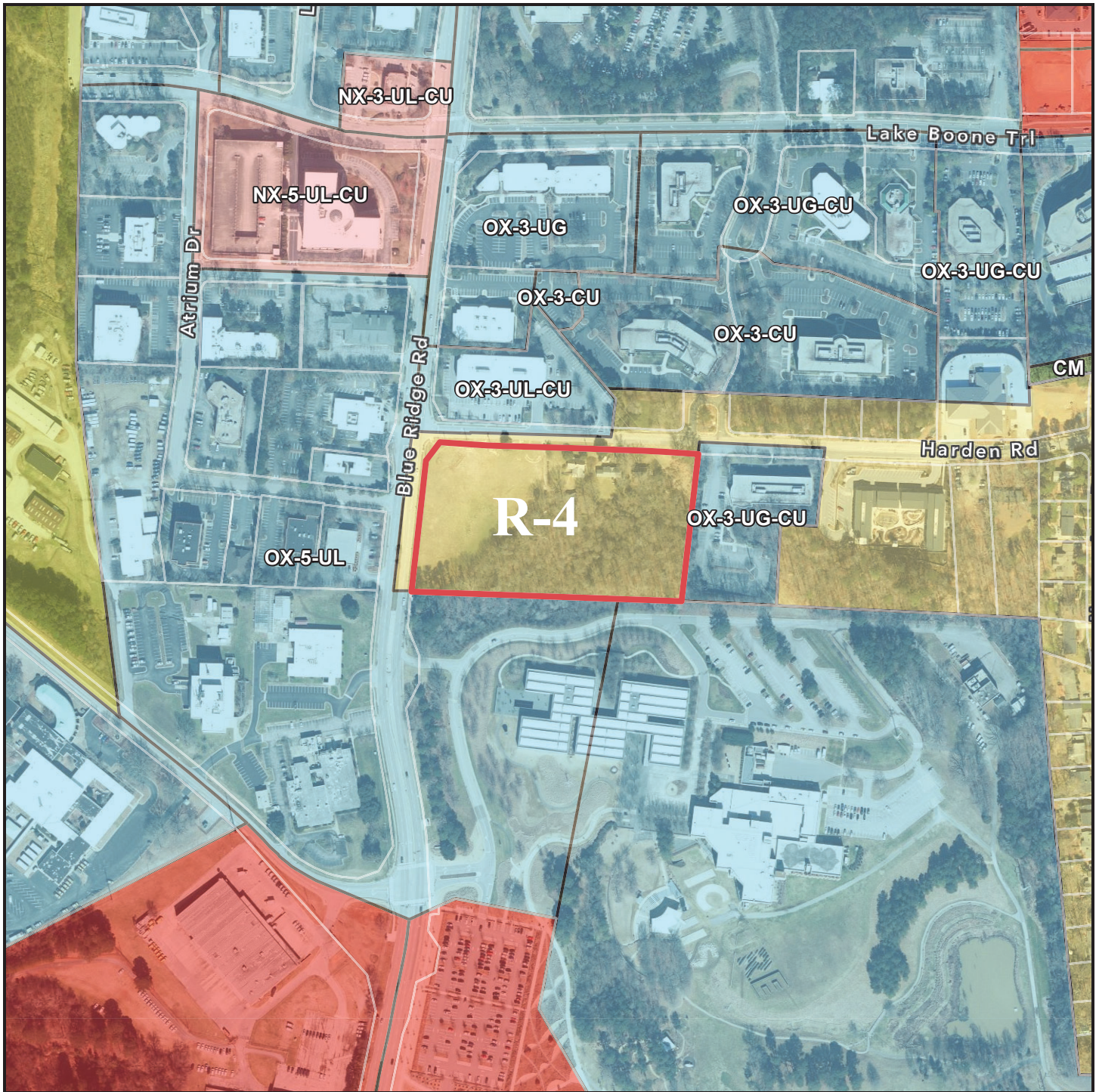
3725 Harden Road



1 inch equals 400 feet

Vicinity Map

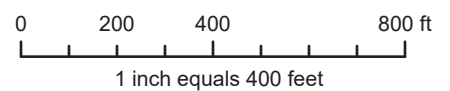
Disclaimer
iMaps makes every effort to produce and publish the most current and accurate information possible. However, the maps are produced for information purposes, and are NOT surveys. No warranties, expressed or implied, are provided for the data therein, its use, or its interpretation.



3725 Harden Road

Zoning Map

Current Zoning: R-4



Disclaimer
iMaps makes every effort to produce and publish the most current and accurate information possible. However, the maps are produced for information purposes, and are NOT surveys. No warranties, expressed or implied, are provided for the data therein, its use, or its interpretation.