

November 20, 2023

Chad W. Essick  
*Partner*  
D: 919.783.2896  
F: 919.783.1075  
[cessick@poynerspruill.com](mailto:cessick@poynerspruill.com)

Dear Neighboring Property Owners:

We represent Sambrick Management, LLC (“Sambrick”), which is considering a rezoning of the property located at 2210 Spring Forest Road (the “Property”). Currently, the Property is zoned R-10-CU. Sambrick is considering a rezoning of the Property to RX-3-CU to allow some additional flexibility for a proposed multifamily residential use.

Sambrick plans to file its rezoning petition with the City of Raleigh (“City”) in the near future. The City requires that a neighborhood meeting be held for all property owners within 500 feet of the area requested for rezoning. We are writing to invite you to the neighborhood meeting to discuss this rezoning request. The neighborhood meeting will be held in-person on **Tuesday, December 5, 2023 at Millbrook Exchange Park, located at 1905 Spring Forest Road starting at 6:00 p.m.**

For your reference and convenience, enclosed as **Exhibit A** is an aerial photograph of the area with the Property outlined in red. Enclosed as **Exhibit B** is a map showing the current zoning of the area, including the Property.

Information about the rezoning process is available online. You can visit [www.raleighnc.gov](http://www.raleighnc.gov) and search for “Rezoning Process.” If you have any further questions about the rezoning process, you may contact Robert Tate at 919-996-2235 or [robert.tate@raleighnc.gov](mailto:robert.tate@raleighnc.gov).

If you have any further questions about the neighborhood meeting or this potential rezoning, you may contact me at 919-783-2896 or [cessick@poynerspruill.com](mailto:cessick@poynerspruill.com).

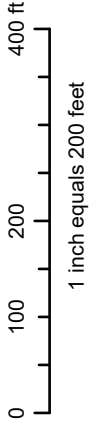
Sincerely,



**Chad W. Essick**  
*Partner*

Enclosures

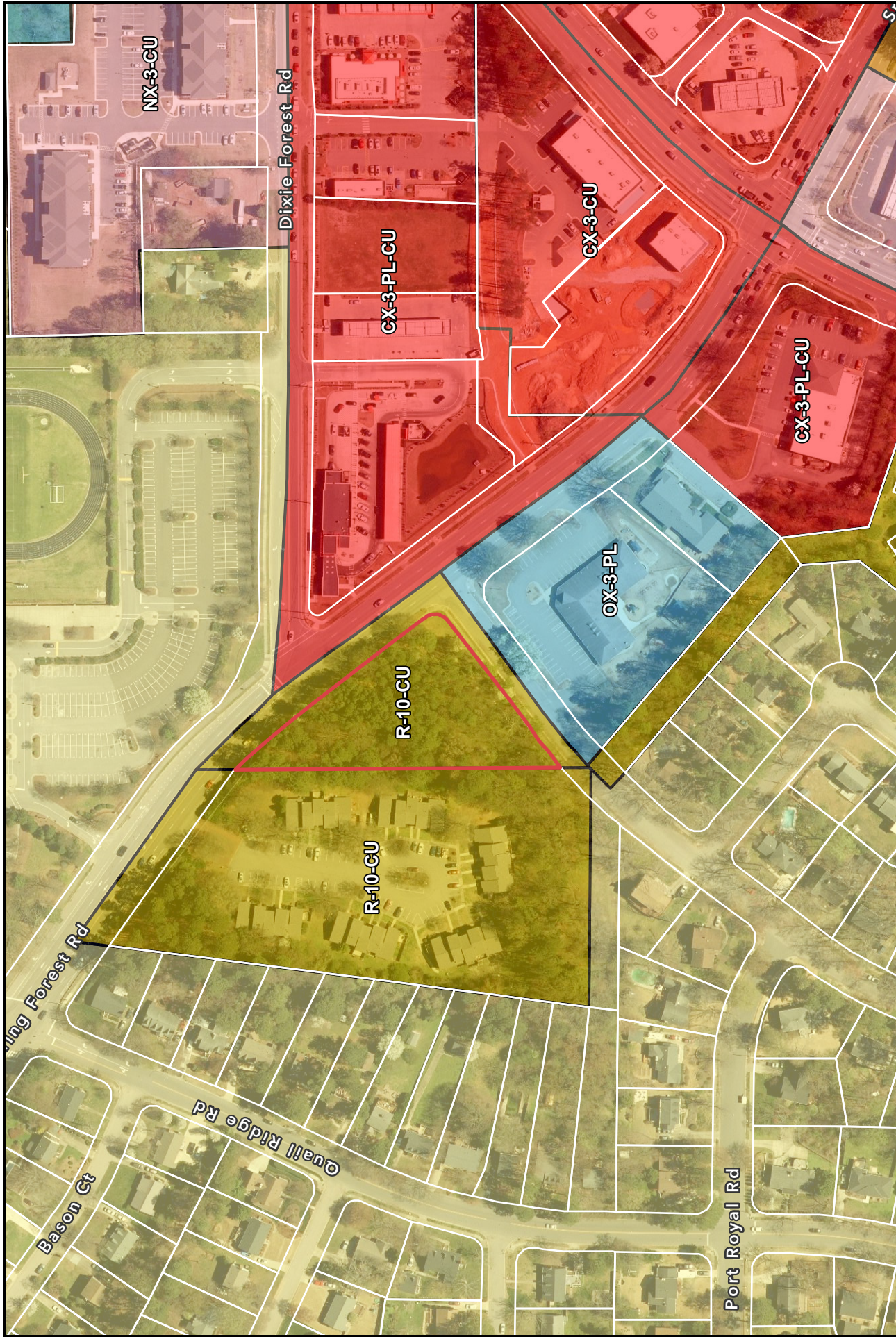




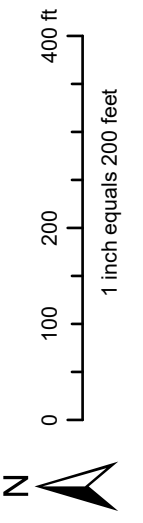
**Disclaimer**  
iMaps makes every effort to produce and publish the most current and accurate information possible. However, the maps are produced for information purposes, and are NOT surveys. No warranties, expressed or implied, are provided for the data therein, its use, or its interpretation.

**EXHIBIT**  
**A**





**Disclaimer**  
 iMaps makes every effort to produce and publish the most current and accurate information possible. However, the maps are produced for information purposes, and are NOT surveys. No warranties, expressed or implied, are provided for the data therein, its use, or its interpretation.



**EXHIBIT**  
**B**