

March 11, 2024

Re: Notice of Neighborhood Meeting

Neighboring Property Owners and Residents:

You are invited to attend a neighborhood meeting on March 21, 2024, from 6:30-7:30pm at the Marsh Creek Community Center, located at 3050 N. New Hope Road, Raleigh, NC 27604. The purpose of the meeting is to discuss an upcoming application to rezone property located at 2751 Capital Boulevard (PIN: 1715825850) (the "Site").

The Site is currently zoned Commercial Mixed Use-3 stories- Parking Limited Frontage (CX-3-PL), and is proposed to be rezoned to Industrial Mixed Use-w/ Conditions (IX-CU). During the meeting, the applicant will describe the nature of the request and field any questions from the public. Enclosed are: (1) a vicinity map outlining the location of the Site, and (2) a current zoning map of the subject area.

Prior to submittal of any rezoning application, the City of Raleigh requires a neighborhood meeting be held for all property owners and tenants within 500 feet of the area requested for rezoning. Any landowner or tenant who is interested in learning more about this project is invited to attend. Information about the rezoning process is available online; visit www.raleighnc.gov and search for "Rezoning Process." If you have further questions about the rezoning process, please contact:

Sean Stewart
Raleigh Planning & Development
(919) 996-2638
sean.stewart@raleighnc.gov

If you have any questions about this request, please contact me at (919) 835-4032 or via email at matthewcarpenter@parkerpoe.com.

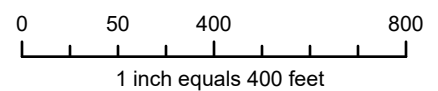
Thank you,

Matthew J. Carpenter

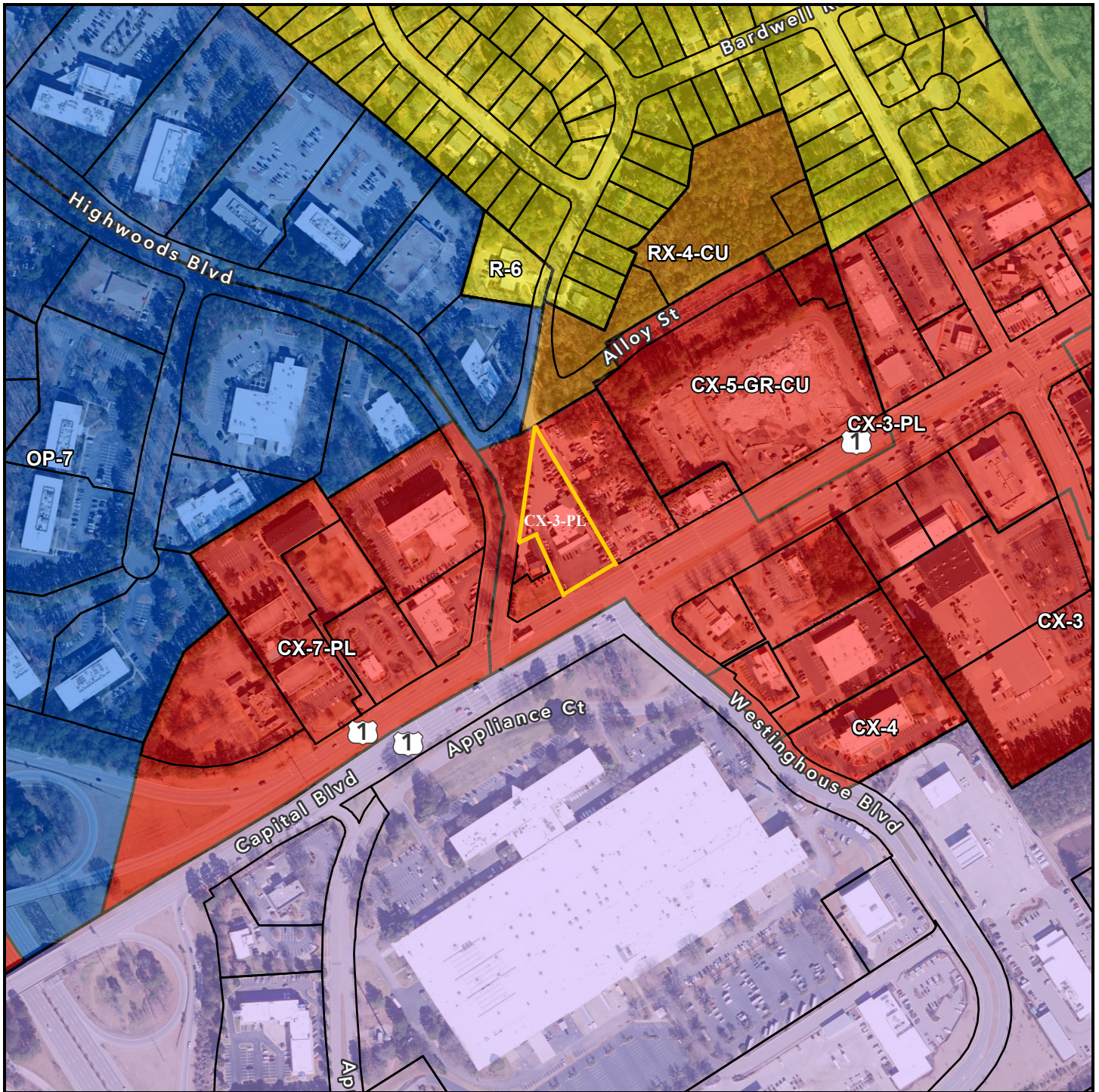


2751 Capital Blvd.

Vicinity Map



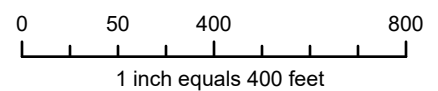
Disclaimer
iMaps makes every effort to produce and publish the most current and accurate information possible. However, the maps are produced for information purposes, and are **NOT** surveys. No warranties, expressed or implied, are provided for the data therein, its use, or its interpretation.



2751 Capital Blvd.

Zoning Map

Current Zoning: CX-3-PL



Disclaimer

*iMaps makes every effort to produce and publish the most current and accurate information possible. However, the maps are produced for information purposes, and are **NOT** surveys. No warranties, expressed or implied, are provided for the data therein, its use, or its interpretation.*