

Comprehensive Plan Amendment Petition



RALEIGH
DEPARTMENT OF
CITY PLANNING



Department of City Planning | 1 Exchange Plaza, Suite 300 | Raleigh, NC 27601 | 919-996-2626

A request to amend the 2030 Comprehensive Plan text, maps or content.

Applicant Information

Name _____

Address _____

City _____

State _____

Zip _____

Phone _____

Fax # _____

Email _____

Requested Amendment

Future Land Use Map
(Cite all affected parcels
below)

Plan Text (Cite relevant
section/page below)

Area Plan Map/Text (Cite
all affected parcels and
relevant section/page below)

Other Map
(Specify name/map number)

Brief Description of Amendment:

The undersigned applicant(s) hereby certifies that, to the best of his or her knowledge and belief, all information supplied with this application is true and accurate.

Signature Emma Liles _____ Date _____

Signature _____ Date _____

Office Use Only

File # CP- _____ Fee Paid _____ Check # _____ Received By _____

Directions for Filing a Comprehensive Plan Amendment Petition

1 Filing a Petition: A petition must be clearly and accurately written or typed. Petitions may be filed in person at One Exchange Plaza or by mail: Planning & Development PO Box 590, Raleigh, NC 27602. Petitions to amend the Comprehensive plan must be approved by the City Council, upon a recommendation by the Planning Commission. Submittal of a Comprehensive plan amendment must be in accordance with the filing schedule (coming soon).

2 Fee: A fee as specified on the [Development Fee Schedule](#) must be submitted with this petition. Fees are due at the time of petition submittal, and are non-refundable.

Information That Must be Submitted with Petition

A Description of requested amendment to the Comprehensive Plan

Clearly explain the amendment to the Comprehensive Plan. If the request is to alter the Plan text, cite the section, page number and policy or action short title. Suggested text amendments should be submitted in 'blackline' or 'strikeout' format (text recommended to be removed should be strikethrough, added text should be bold). If the request is to alter the future land use map, list all affected parcels (by PIN or address), area of request, the current designation and recommended designation. Suggested amendments to any map should be described and illustrated. List any applicable area plans that provide detailed guidance for the property, with any suggested amendments. The Comprehensive Plan can be found online at www.raleighnc.gov/cp

B Conditions that warrant the plan amendment

Describe the conditions that warrant the plan amendment such as unforeseen circumstances or the emergence of new information, unanticipated changes in development patterns, rezoning, transportation improvements, economic opportunities, etc.

C Relevance of the amendment to the Plan's six vision themes

(1. Economic Prosperity and Equity 2. Expanding Housing Choices 3. Managing Our Growth 4. Coordinating Land Use and Transportation 5. Greenprint Raleigh 6. Growing Successful Neighborhoods and Communities)

Explain how the amendment addresses the six guiding themes of the Comprehensive Plan.

D How the amendment advances public health, safety and general welfare

Explain how the amendment advances and protects the general health, safety and welfare of the citizens.

Comprehensive Plan Amendment Checklist

Please check off each space or "N/A" for not applicable. Submit all required documentation to the Planning Department.

Checklist	Completed	N/A
Had pre-application meeting with Planning staff to discuss proposal	<input type="checkbox"/>	<input type="checkbox"/>
Completed and signed petition	<input type="checkbox"/>	<input type="checkbox"/>
Attached map clearly showing boundaries of area and requested Comprehensive Plan Amendment	<input type="checkbox"/>	<input type="checkbox"/>
Attached written statement that addresses subsections A, B, C and D	<input type="checkbox"/>	<input type="checkbox"/>
Applicable fee (make check or money order payable to: City of Raleigh)	<input type="checkbox"/>	<input type="checkbox"/>
Additional information as required (traffic study, etc.)	<input type="checkbox"/>	<input type="checkbox"/>

A. Description of requested amendment to the Comprehensive Plan

Staff are proposing changes to Policies, Actions, and Map PR-3 within Section 8 of the Comprehensive Plan pursuant to the goals and recommendations set forth by the City Council-adopted Capital Area Greenway Master Plan. See attachments for more details.

B. Conditions that warrant the plan amendment

The amendments being sought are ones informed directly by the Capital Area Greenway Master Plan which was adopted by City Council in May 2022. Additionally, the Capital Area Greenway Master Plan and its recommendations support the goals and objectives of the Strategic Plan. The Strategic Plan's emphasis on preserving natural resources underscores the need to integrate greenways into urban development, ensuring growth that is both sustainable and respectful of the environment. By addressing environmental equity, the Greenway Master Plan identifies the necessity for equitable distribution of green spaces, calling for comprehensive policies to ensure access for all communities, particularly those historically underserved. Furthermore, the Strategic Plan's focus on developing a multi-modal transportation network supports incorporating greenways into the city's transportation infrastructure. This promotes alternatives to automobile travel and enhances regional connectivity. These conditions reflect the growing importance of sustainable development practices and equitable transportation solutions, aligning with Raleigh's strategic goals for a vibrant, inclusive, and environmentally responsible future. By amending the 2030 Comprehensive Plan as recommended by the Capital Area Greenway Master Plan, Raleigh can better achieve the objectives set forth in its Strategic Plan.

C. Relevance of the amendment to the Plan's six vision themes

1. **Economic Prosperity and Equity:** The Greenway Master Plan promotes economic development by enhancing recreational and transportation infrastructure, which can increase property values and attract businesses. Equitable access to greenways ensures all community members benefit, particularly in underserved areas, aligning with the vision of promoting economic prosperity and equity.
2. **Expanding Housing Choices:** By integrating greenways into residential areas, the plan supports diverse housing developments that are close to recreational amenities. This can make neighborhoods more attractive and livable, encouraging a mix of housing options.
3. **Managing Our Growth:** The Greenway Master Plan helps manage urban growth by preserving natural corridors and open spaces amidst development. It ensures that green infrastructure keeps pace with urban expansion, providing a balance between development and nature.
4. **Coordinating Land Use and Transportation:** The greenways provide alternative transportation routes, promoting non-motorized travel options like biking and walking. This integration

supports land use planning that reduces dependency on cars and encourages sustainable, interconnected communities.

5. **Greenprint Raleigh – Sustainable Development:** The plan’s focus on preserving green spaces, promoting biodiversity, and offering sustainable transportation options directly contributes to environmental sustainability. It enhances urban resilience by providing natural buffers and reducing urban heat island effects.
6. **Growing Successful Neighborhoods and Communities:** Greenways enhance the quality of life by providing recreational opportunities, fostering community interaction, and improving public health. They create interconnected communities that are more cohesive and supportive, contributing to vibrant and successful neighborhoods. Additional accessibility in terms of physical accessibility and general ease of access is also provided. Greenways serve as easy escapes into natural corridors that provide opportunities for relaxation and recreation without the need to travel outside of the city. In the same breath greenways are paved trails that provide universally accessible opportunities for people of all abilities to experience the aforementioned escape. When considering the Greenway system’s other function, as a medium for multimodal active transportation, the general accessibility of the city as a whole is increased for those without access to, or the ability to operate a motor vehicle.

By aligning with these vision themes, the Greenway Master Plan Update ensures that Raleigh’s growth and development are sustainable, equitable, and enriching for all its residents.

D. [How the amendment advances public health, safety, and general welfare.](#)

The Greenway Master Plan significantly advances active transportation options through public health, safety, and general welfare in several keyways:

Public Health

1. **Physical Activity:** By providing safe, accessible, and attractive spaces for walking, biking, and other forms of exercise, greenways encourage regular physical activity, which is essential for maintaining physical health and reducing the risk of chronic diseases like obesity, heart disease, and diabetes.
2. **Mental Well-being:** Access to natural spaces and opportunities for outdoor recreation can reduce stress, improve mood, and enhance overall mental well-being. Greenways offer tranquil environments for relaxation and mental rejuvenation.
3. **Air Quality:** Greenways often include substantial vegetation, which helps improve air quality by filtering pollutants and producing oxygen. Encouraging non-motorized transportation also reduces vehicle emissions, contributing to cleaner air.
4. **Access to Nature:** Greenways ensure that urban residents have convenient access to natural environments, which is an important aspect of quality of life.

Safety

1. **Safe Routes:** Greenways provide dedicated pathways for pedestrians and cyclists, separated from motor vehicle traffic, reducing the risk of accidents and injuries. These safe routes make it easier and safer for people to commute and engage in recreational activities.
2. **Community Surveillance:** Well-used greenways can foster a sense of community surveillance or "eyes on the street," which can deter crime and increase safety for all users.
3. **Emergency Access:** Properly designed greenways can serve as corridors for emergency responders, providing additional routes for accessing different parts of the city in emergencies.

All of these points, and the Capital Area Greenway Master Plan by extension, are in direct support of the Vision Zero program that was adopted by the City of Raleigh in Summer 2022. This program seeks to work towards a reality where all transportation related fatalities and severe injuries are eliminated.

General Welfare

1. **Community Connectivity:** Greenways connect neighborhoods, parks, schools, and commercial areas, promoting social interactions and fostering a sense of community. They provide inclusive spaces that are accessible to people of all ages and abilities.
2. **Environmental Benefits:** Greenways protect and enhance natural habitats, contribute to biodiversity, and help manage stormwater runoff, reducing the risk of flooding and improving water quality. These environmental benefits support the overall ecological health of the community.
3. **Economic Value:** Proximity to greenways can increase property values and attract tourism and business, contributing to the local economy. This economic uplift supports the overall welfare of the community.
4. **Aesthetic Improvements:** Greenways enhance the visual appeal of urban areas by incorporating natural landscapes into the cityscape, creating pleasant environments for residents and visitors alike.

In summary, the Greenway Master Plan promotes public health by encouraging physical activity and reducing stress, enhances safety by providing safe transportation routes and community surveillance, and improves general welfare by fostering community connectivity, protecting the environment, and boosting the local economy. These combined benefits make greenways an integral component of a healthy, safe, and thriving community.

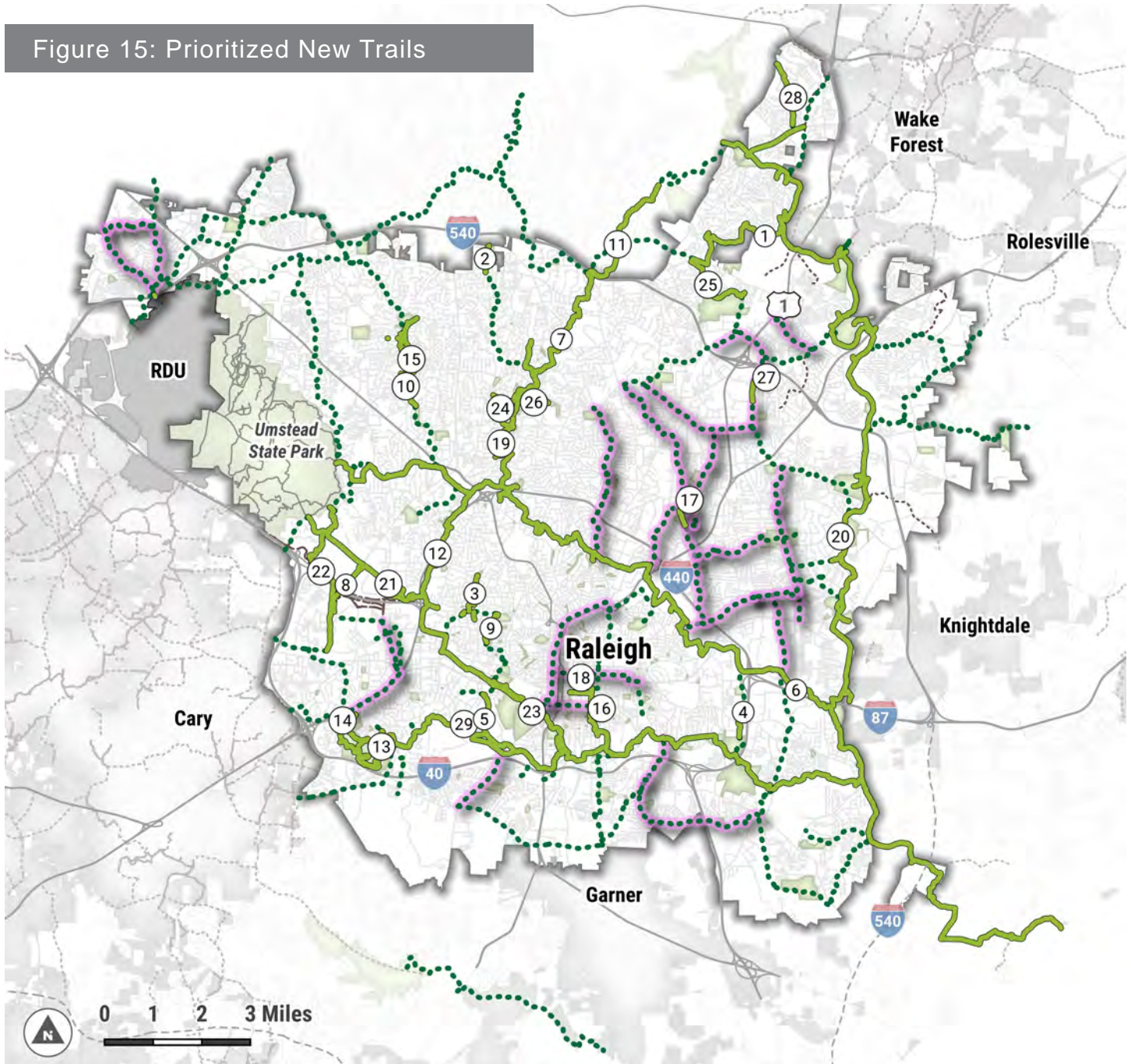
SerialNum	Plan Section	Plan Subsection	Policy ID	Consider for Key Policy	Title	EDITED Description	ORIGINAL Description
080301	08. Parks, Recreation, and Open Space	03. Greenway System Land and Trails	PR 3.1		Capital Area Greenway System	Continue to expand Raleigh's greenway trail network according to the guidelines established in the Capital Area Greenway Master Plan, in order to protect open space corridors and to safely connect greenway trails to parks, schools, communities, and other destinations and to other bicycle, pedestrian, and multimodal facilities.	Continue to expand Raleigh's greenway trail network according to the guidelines established in the Capital Area Greenway Master Plan and the Capital Area Greenway Planning and Design Guide, in order to protect greenway corridors and connect greenway trails, parks, schools, and other destinations with safe integration into on-road facilities.
080302	08. Parks, Recreation, and Open Space	03. Greenway System Land and Trails	PR 3.2		Public Awareness and Stewardship	Educate citizens about the benefits of supporting stewardship efforts of open space corridors .	Educate citizens about the benefits of supporting stewardship efforts of greenway corridors.
080303	08. Parks, Recreation, and Open Space	03. Greenway System Land and Trails	PR 3.3		Resilience and Green Infrastructure Network	Acquire and maintain open space corridors as identified in the Capital Area Greenway Master Plan to preserve the natural character of watercourses, promote water quality, and increase flood protection.	Acquire and maintain greenways along important riparian corridors as identified in the Capital Area Greenway Planning and Design Guide in order to preserve the natural character of watercourses, promote water quality, and increase flood protection.
08030X	08. Parks, Recreation, and Open Space	03. Greenway System Land and Trails	PR 3.X	*	Resilience and Ecosystem Services	New development adjacent to designated open space corridors should enhance the resiliency of the Greenway Network through the addition of green stormwater infrastructure, stream restoration, native plantings, increased erosion control elements, and provision of wildlife habitat, where appropriate.	
08031X	08. Parks, Recreation, and Open Space	03. Greenway System Land and Trails	PR 3.1X		Resilient Development	Raleigh's built and natural environments should function in complementary ways. Preference is given to development and site management approaches that reduce the risks and impacts of natural disasters and climate change, especially in regard to flood control.	
080306	08. Parks, Recreation, and Open Space	03. Greenway System Land and Trails	PR 3.6		Regional Network	Complete the Capital Area Greenway system with connections to surrounding open space corridors , streams, and greenway trails that are elements of a regional network.	Complete the Capital Area Greenway system with connections to surrounding greenway corridors that are elements of a regional network.
080308	08. Parks, Recreation, and Open Space	03. Greenway System Land and Trails	PR 3.8	*	Multimodal Integration	Improve pedestrian and bicycle linkages by closing gaps in network connectivity and prioritizing connections to public transportation, streets, sidewalks, and other transportation corridors. Development along proposed greenway trails and/or open space corridors should provide public access and infrastructure necessary to serve the needs of existing or potential future greenway trail users, as part of an integrated multimodal network.	Improve pedestrian and bicycle linkages by closing gaps in network connectivity and prioritizing connections to public transportation, streets, sidewalks, and other transportation corridors. Development along proposed Greenway Connectors should provide public access and infrastructure necessary to serve the needs of greenway trail users.
080310	08. Parks, Recreation, and Open Space	03. Greenway System Land and Trails	PR 3.10		Open Space Corridors	Support initiatives that work to create a protected, linked network of linear natural areas, wildlife habitats and greenspaces throughout the region. Continue to identify new open space corridor alignments as necessary to promote the goals of the Capital Area Greenway program.	Support initiatives that work to create a protected, linked network of linear natural areas, wildlife habitats and greenspaces throughout the region. Continue to identify new corridor alignments as necessary to promote the goals of the Capital Area Greenway program.
080311	08. Parks, Recreation, and Open Space	03. Greenway System Land and Trails	PR 3.11		Greenway Trail Transportation Network	Position and promote the Capital Area Greenway system trails as safe, healthy and sustainable travel alternatives. <i>Greenway trails are an essential part of the Raleigh's multimodal transportation network. Greenway trails provide a sustainable means of navigating the city and are not intended solely for recreation. The greenway trail network will be developed and managed to provide connectivity and access between residential areas, commercial areas, employment centers, shopping centers, schools, parks, civic institutions, and open spaces.</i>	Position and promote the Capital Area Greenway system trails as safe, healthy and sustainable travel alternatives.
080313	08. Parks, Recreation, and Open Space	03. Greenway System Land and Trails	PR 3.13	*	Greenway-Oriented Development	Development adjacent to or encompassing a designated open space corridor or greenway trail facility should provide links between internal pedestrian infrastructure and the greenway network, where appropriate. The development should proactively respond to greenway trails and open space corridors as an amenity.	Development adjacent to or encompassing a designated greenway corridor or greenway connector should provide links between internal pedestrian infrastructure and the greenway network, where appropriate. The development should pro-actively respond to greenways as an amenity, incorporating and maintaining greenway viewsheds and aesthetic character, as well as storm water management and flood control benefits.
08031X	08. Parks, Recreation, and Open Space	03. Greenway System Land and Trails	PR 3.1X		Developer-Built Trails	New development along designated open space corridors or greenway connectors should be required to construct trail facilities and provide easements for public access where proposed in the Capital Area Greenway Master Plan.	
08031X	08. Parks, Recreation, and Open Space	03. Greenway System Land and Trails	PR 3.1X		Greenway Amenities	New development along open space corridors should provide amenities that support the public access and use of the greenway network, such as wayfinding signage, shaded seating areas, and any other amenities identified in the Capital Area Greenway Master Plan.	
08031X	08. Parks, Recreation, and Open Space	03. Greenway System Land and Trails	PR 3.1X		Trail Aesthetics and Viewsheds	In order to preserve and enhance user experience and the natural aesthetic character of the greenway network, new development adjacent to existing or proposed greenway trails classified as Scenic Trails and Loops should provide additional setbacks, undisturbed buffers, tree plantings, native landscaping, and other techniques of visual screening between developed areas and the designated open space corridors where appropriate. In urban settings, greenway trails should be integrated into site design as part of a cohesive public realm.	
08031X	08. Parks, Recreation, and Open Space	03. Greenway System Land and Trails	PR 3.1X		Fee-In-Lieu of Greenway Construction	Investigate developing a fee-in-lieu policy to provide an alternative for developers, where greenway trail construction is not feasible or practical at the time of development.	
08031X	08. Parks, Recreation, and Open Space	03. Greenway System Land and Trails	PR 3.1X		Greenway Operations	Implement operational changes to existing guidelines, policies, and codes for the greenway network, to position greenway trails as an essential transportation option.	
08031X	08. Parks, Recreation, and Open Space	03. Greenway System Land and Trails	PR 3.1X		Greenway Trail Closures	New development and construction projects adjacent to existing greenway trails should provide for continuous, uninterrupted access to the greenway trail system throughout site development. This can include temporary trail access, detours, or other means of maintaining access.	
08031X	08. Parks, Recreation, and Open Space	03. Greenway System Land and Trails	PR 3.1X		BikeRaleigh Plan	Update the BikeRaleigh Plan to incorporate new proposed greenway trails and greenway connectors recommended in the Capital Area Greenway Master Plan. Streetside facilities functioning as greenway connectors should be distinguished as part of the greenway trail network through the provision of design features that enhance the user experience, such as wayfinding signage, meandering trail alignments, additional tree shade, public art, etc.	

Section	Subsection	Action ID	Action Name	EDITED Action Description
08. Parks, Recreation, and Open Space	01. Planning for Parks	PR 1.2	Greenway Plan Update	Update the Capital Area Greenway Master Plan every five years to respond to evolving community needs and priorities.
08. Parks, Recreation, and Open Space	03. Greenway System Land and Trails	PR 3.1	Capital Area Greenway System	Complete the Capital Area Greenway System to provide connections to the local and regional open space corridors and multimodal transportation networks.
08. Parks, Recreation, and Open Space	03. Greenway System Land and Trails	PR 3.11	Signage and Wayfinding	Increase signage throughout the Capital Area Greenway System that improves user safety and wayfinding.
08. Parks, Recreation, and Open Space	03. Greenway System Land and Trails	PR 3.1X	Greenway Trail Lighting	Evaluate strategic locations for lighting along greenway trails.
08. Parks, Recreation, and Open Space	03. Greenway System Land and Trails	PR 3.12	Development Adjacent to Greenways	Implement the Capital Area Greenway Master Plan and engage greenway planning staff during rezoning and site development. Involve the City's greenway planning staff in the planning and design of all infrastructure projects that impact a corridor or proposed trail as identified in the Capital Area Greenway Master Plan.
08. Parks, Recreation, and Open Space	03. Greenway System Land and Trails	PR 3.13	Trail Safety	Enhance trail user safety and etiquette.
08. Parks, Recreation, and Open Space	03. Greenway System Land and Trails	PR 3.1X	Flood Monitoring Program	Collaborate with the Stormwater Division to develop a Flood Monitoring Program to provide surveillance to monitor need for communications for trail closures and maintenance.
08. Parks, Recreation, and Open Space	03. Greenway System Land and Trails	PR 3.14	Maintenance Standards	Improve maintenance standards for existing and proposed greenway trails, to ensure safe and comfortable travel by users.
08. Parks, Recreation, and Open Space	03. Greenway System Land and Trails	PR 3.5	Open Space Corridors	Acquire easements along all designated open space corridors. Require land dedication and/or greenway trail construction whenever a tract of land within a proposed development includes any part of, or is immediately adjacent to, a designated open space corridor. <i>Increase the minimum width required to be dedicated for greenway easement to a minimum of 75 feet to promote the feasibility of future greenway trail construction within dedicated easement areas.</i>
08. Parks, Recreation, and Open Space	03. Greenway System Land and Trails	PR 3.6	Resilience and Green Infrastructure Network	Develop a program to accelerate open space corridor acquisition of contiguous land and quality natural resource areas along the full width of the 100-year floodplain, or a 100-foot wide vegetative buffer, whichever is greater, through additional funding and/or regulations.
08. Parks, Recreation, and Open Space	03. Greenway System Land and Trails	PR 3.8	Multimodal Integration	Provide multimodal access to the greenway network at strategic locations.
08. Parks, Recreation, and Open Space	03. Greenway System Land and Trails	PR 3.9	Regional Network	Coordinate with adjacent municipalities and other entities, in order to identify potential cross-jurisdictional connections.
08. Parks, Recreation, and Open Space	05. Open Space and Special Landscapes	PR 5.1	Mandatory Open Space Corridor Dedication	Continue the requirement of mandatory land dedication for open space corridors from residential development, to further the goals of the Capital Area Greenway Program. Explore expanding the requirement to non-residential development.
08. Parks, Recreation, and Open Space	05. Open Space and Special Landscapes	PR 5.8	Cost Sharing for Greenway Connections	Actively explore cost-share opportunities in order to provide improved greenway access between development projects and the Capital Area Greenway System.

ORIGINAL Action Description	Responsible Agencies	Time Frame	Action Type	Capital Funds
Update and evaluate the implementation of the Capital Area Greenway Master Plan and the 2014 Capital Area Greenway Planning and Design Guide in order to promote the acquisition of land or easements for greenway corridors and the completion of the proposed trail system.	PRCR	Short-term	Systems/support	N
Prioritize an implementation schedule to complete the full system of greenway trails, including proposed greenway connectors, with a focus on inter-connectivity among neighborhoods, parks, schools, commercial areas, cultural and civil institutions, and other regional destinations.	PRCR	On-going	Systems/support	Y
Implement the Raleigh Greenways Master Sign Program throughout the system and improve to include wayfinding with comprehensive directions to and from the Capital Area Greenway system, nearby destination information, orientation indicators, educational and interpretive information, and route options within the system.	PRCR, ES, RDOT	Short-term	Systems/support	Y
	PRCR	Short-term		
Implement the Capital Area Greenway Master Plan and engage greenway planning staff during rezoning and site development for residential and non-residential sites. Involve the city's greenway planning staff in the planning and design of all infrastructure projects that impact a corridor or proposed trail as identified in the Capital Area Greenway Planning and Design Guide.	PRCR	On-going	Systems/support	Y
Converted to Policy 2021	PRCR	Short-term	Program/organization	N
	PRCR, ES			
Completed 2021	PRCR, ES, RDOT	Short-term	Program/organization	Y
Acquire and maintain easements along all designated greenway corridors. Require greenway dedication whenever a tract of land within a proposed residential subdivision of site plan includes any part of a designated greenway, and pursue dedication or reservation of greenway land from non-residential development. Explore opportunities to require the construction of greenway trail infrastructure when new development occurs within a designated greenway corridor.	PRCR	On-going	Systems/support	N
Develop a program to accelerate greenway acquisition of contiguous land and quality natural resource areas along the full width of the 100-year floodplain or a 100-foot wide vegetative buffer, whichever is greater, through additional funding and/or regulations.	PRCR, PUD, ES	Short-term	Program/organization	Y
Provide multi-modal access to trailhead locations, as well as adequate parking where feasible.	PRCR	On-going	Systems/support	Y
Completed 2021	RDOT, PRCR, DCP	Long-term	Coordination/outreach	N
Continue the requirement of mandatory greenway land dedication from residential development to further the goals of the Capital Area Greenway program, and explore expanding it to non-residential development.	PRCR	On-going	Systems/support	N
Actively explore cost-share opportunities for the creation of new access points or connections between greenway easements and new development at the time of construction.	PRCR, ES, CMO	Mid-term	Program/organization	N

trh

Figure 15: Prioritized New Trails



CAG Trail Network

- Proposed Trail
- Highest Priority Trail
- Existing Trail

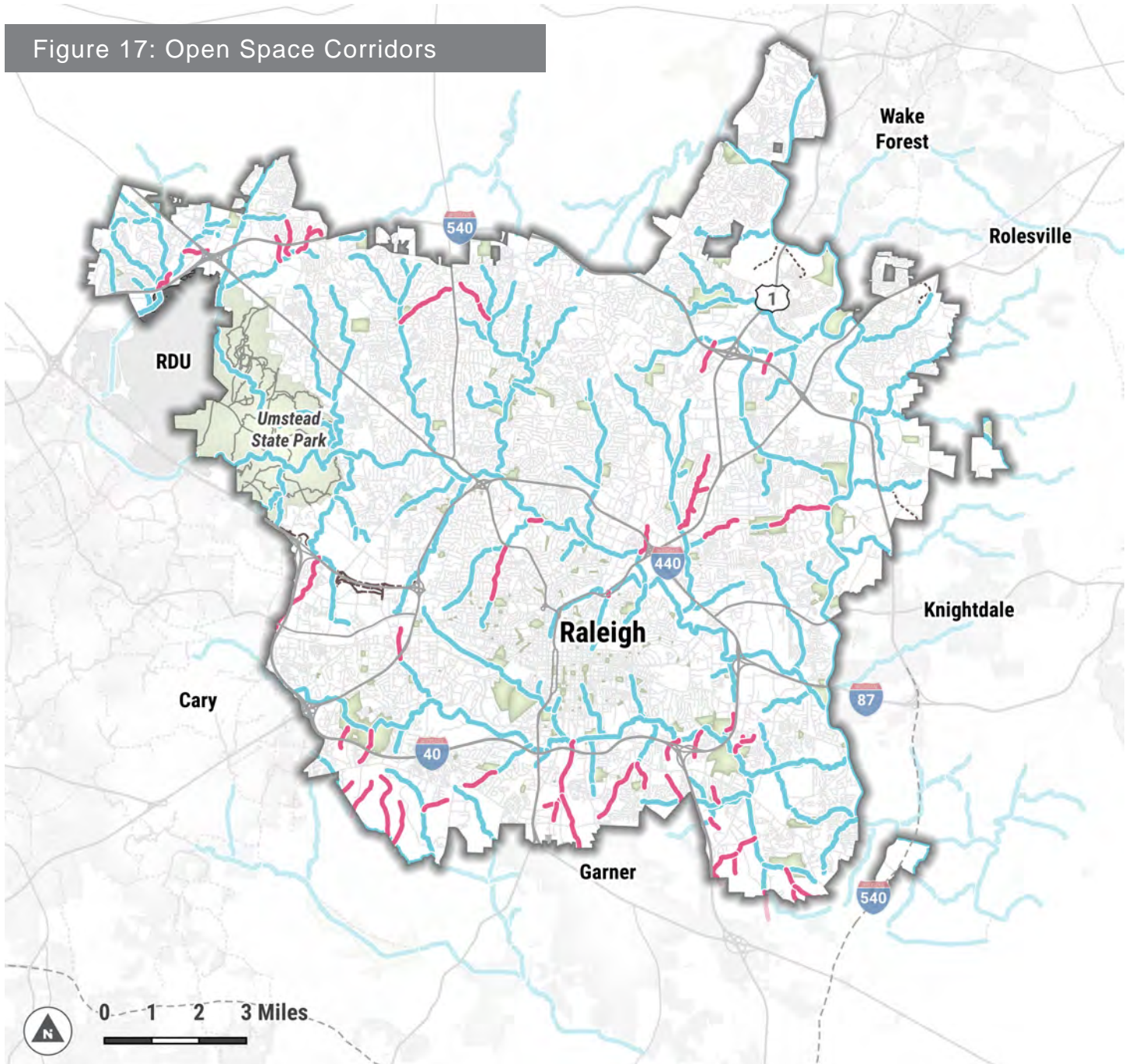
Parks

- Trails in Adjacent Jurisdictions**
- Existing/Funded
 - Proposed

Existing Trails Key

- | | | |
|--------------------------------|----------------------------|----------------------|
| 1 Abbotts Creek | 10 Hare Snipe Creek | 20 Neuse River |
| 2 Baileywick | 11 Honeycutt Creek | 21 Reedy Creek |
| 3 Beaver Dam | 12 House Creek | 22 Richland Creek |
| 4 Birch Ridge Connector | 13 Lake Johnson East Loop | 23 Rocky Branch |
| 5 Centennial Bikeway Connector | 14 Lake Johnson West Loop | 24 Shelley Lake Loop |
| 6 Crabtree Creek | 15 Lake Lynn Loop | 25 Simms Branch |
| 7 East Fork Mine Creek | 16 Little Rock | 26 Snelling Branch |
| 8 Edwards Mill Connector | 17 Marsh Creek | 27 Spring Forest |
| 9 Gardner Street | 18 Martin Street Connector | 28 Wakefield |
| | 19 Mine Creek | 29 Walnut Creek |

Figure 17: Open Space Corridors



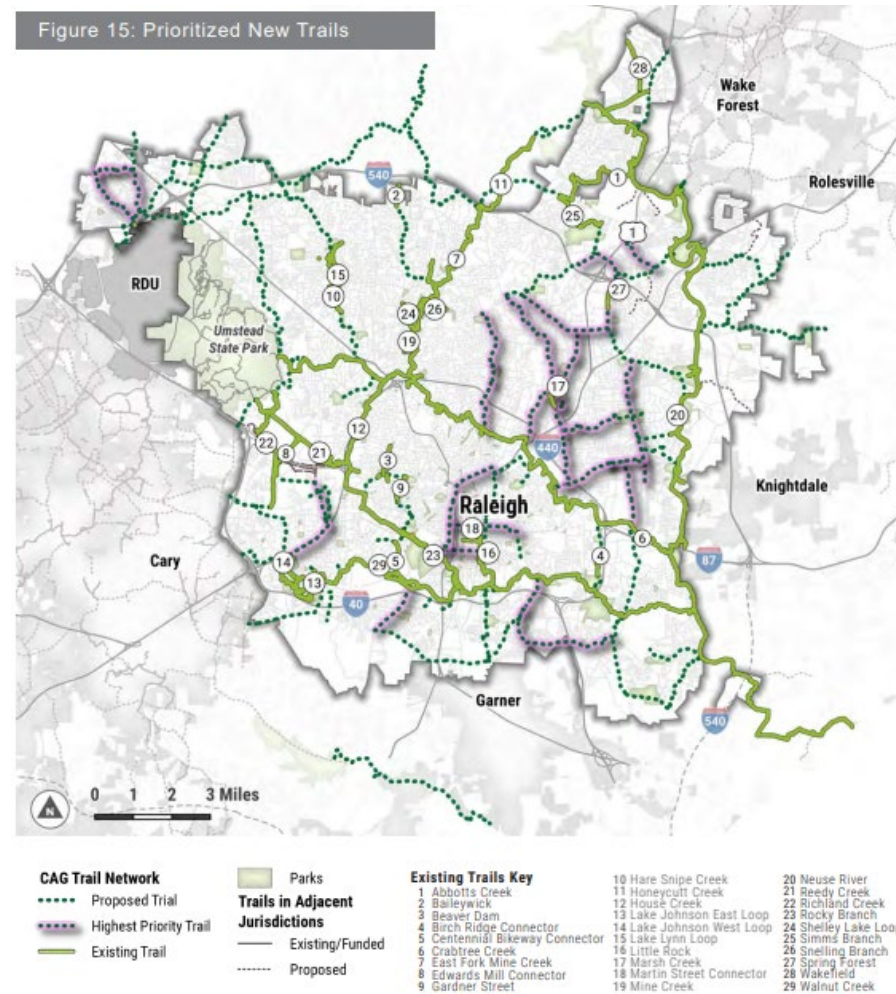
Open Space Corridors

- Existing
- Proposed
- Parks

Trails in Adjacent Jurisdictions

- Existing/Funded
- Proposed

Greenway Trail Map

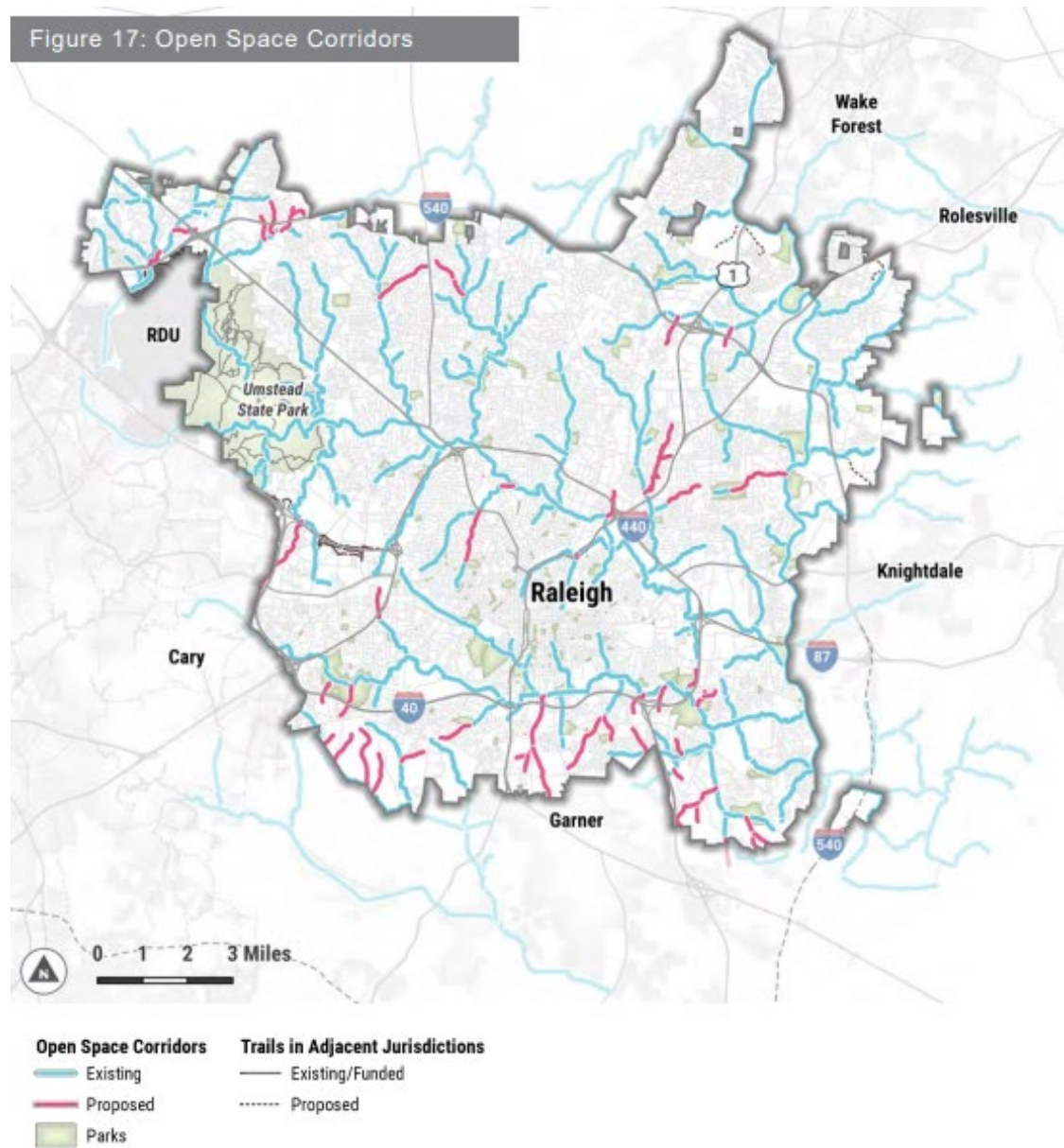


Expanding the existing 117-mile Greenway System by constructing new trails will provide additional access to residents and visitors while also increasing connectivity to existing destinations and the larger transportation network. New trail construction should be strategic, focus on equitable distribution, link to high-frequency transit, and provide comfortable connections to and from parks, activity centers, and other destinations. The following items informed recommendations for new trails:

- Trails planned in previous CAG Plan documents
- Public input
- Specific corridors that align with priority criteria

All new trail recommendations were scored based on the criteria outlined in Appendix D of the [Greenway Master Plan](#), and the highest scoring 20% are shown in the Greenway Trail Map as Highest Priority Trails. A full table of proposed trails with associated scores and rankings can also be found in Appendix D. Balancing new construction with existing trail reinvestment is critical to the sustainability of the Greenway System. As proposed, the full Greenway System will provide 280 linear miles of trails for active transportation, recreation, and open space preservation.

Open Space Corridors



New open space corridors also present an opportunity to expand the Greenway System. Open space corridors preserve natural areas throughout Raleigh, providing valuable vegetative buffers and wildlife corridors where animals can move freely between habitats without barriers or risks associated with development. They slow down and absorb rainfall, improve water quality, provide habitat for plants and animals, reduce noise pollution, cool the air, and absorb air pollution. Open space corridors are one of the frameworks of the trail network. For the purpose of planning efforts with other agencies, it should be assumed that all open space corridors will need to accommodate trail development at some point in time. However, not every proposed open space corridor will lead to trail construction. Trail construction within open space corridors depends on future growth, connectivity needs, development patterns, and ecological factors. Thus, future trail construction may include projects not yet identified in the [Greenway Master Plan](#).