

# NB New Bern Corridor Study

New Bern Avenue and Edenton Street are not only the primary corridors into and out of Raleigh's Downtown, but they are also the spines of a rich cultural landscape that includes historic urban areas, early suburban residential neighborhoods, and the largest medical campus in the City. Protecting and strengthening these assets while improving the function of the streets and promoting reinvestment and development is the goal of the New Bern Corridor Study. The study area includes the roadway and property frontage along a 3.5 mile segment of New Bern Avenue and Edenton Street from Swain Street to Crabtree Creek and the adjacent I-440 interchange.

## Policy AP-NB 1 **Frontage**

Use guidance on map AP-NB-1 to achieve desired frontages as part of rezonings. ●

---

## Action AP-NB 1 **Pedestrian Safety**

Improve pedestrian safety at major intersections and explore options for midblock crossings.

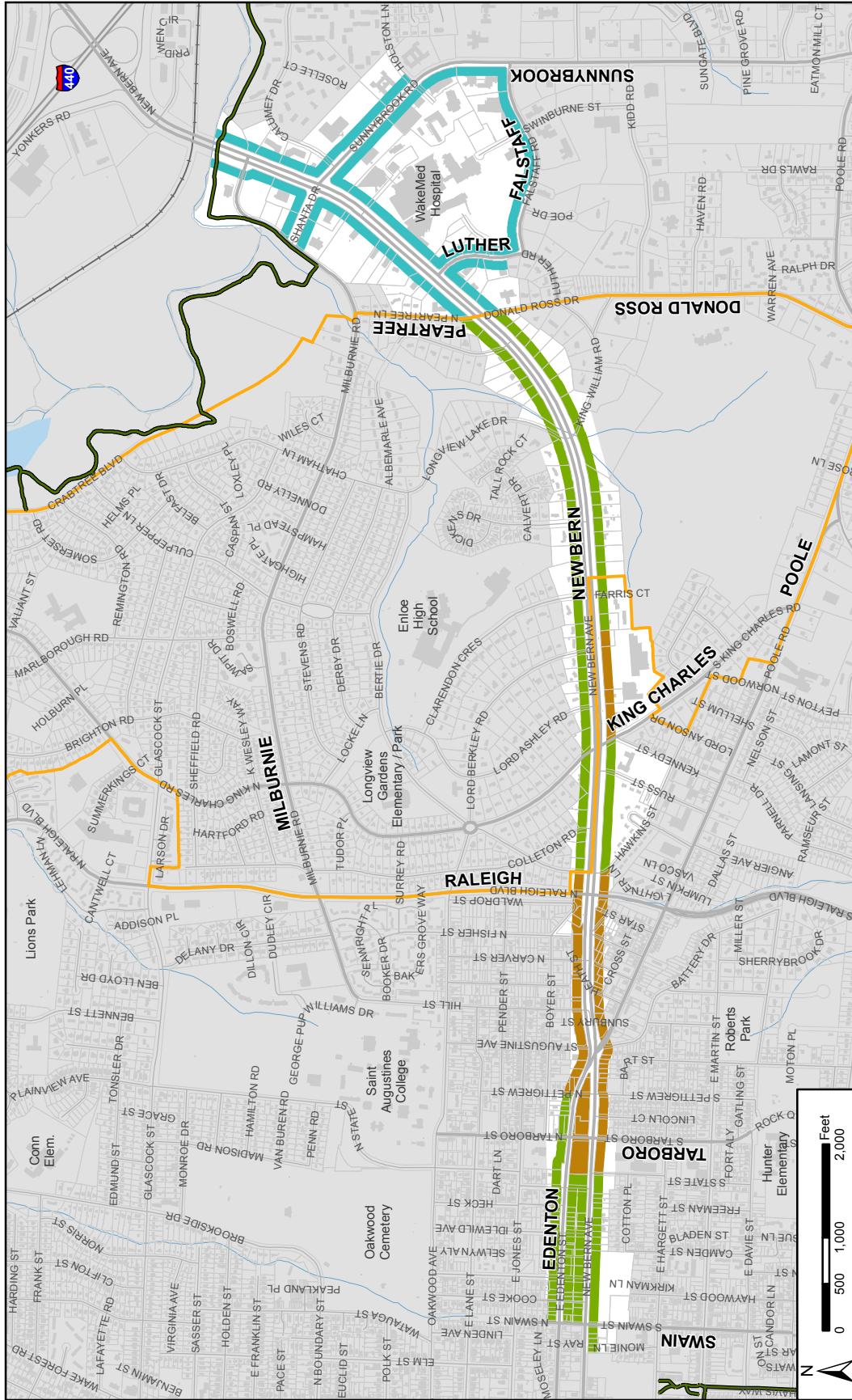
---

## Action AP-NB 2 **Improve Connectivity and Street Lighting**

Improve the pedestrian, bicycle, and lighting facilities along the corridor and into neighborhoods to create a safe, healthy, and walkable environment..

---

AP-NB1: New Bern Avenue



- Suggested Frontage
- Existing Greenway
- Green
- Parking Limited
- Urban Limited
- See King Charles Plan for Additional Guidance