

August
2021



Dix Edge Area Study

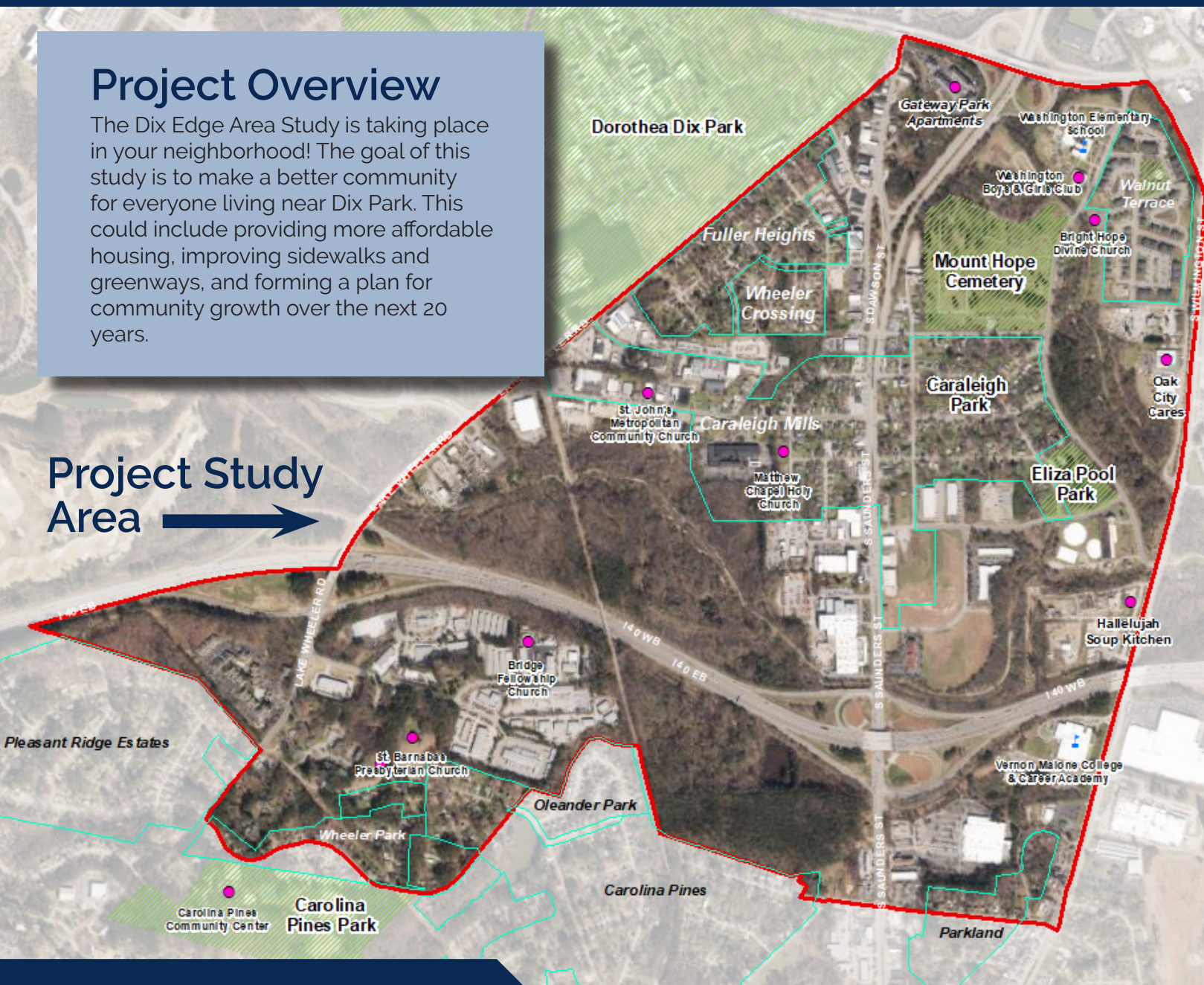
Connecting Communities.
Shaping a Shared Future.

Neighborhood Newsletter

Project Overview

The Dix Edge Area Study is taking place in your neighborhood! The goal of this study is to make a better community for everyone living near Dix Park. This could include providing more affordable housing, improving sidewalks and greenways, and forming a plan for community growth over the next 20 years.

Project Study
Area →



Note from City of Raleigh: These materials were prepared by Public Participation Partners for the City of Raleigh Planning and Development Department

raleighnc.gov/dix-edge



Have you seen this sign?

The project team is always looking for ways to get the word out about the Dix Edge Study. Have you seen our yard signs? These are a great way to share information about the study with your neighbors!

If you are interested in having a sign for your yard or property, reach out to Project Manager Sara Ellis at sara.ellis@raleighnc.gov or 919.996.2234 and we'll drop one off at your front door!

Welcome our new Neighborhood Ambassador!

The Dix Edge project team is excited to welcome Brock Elliot as our new Neighborhood Ambassador. Brock lives in Walnut Terrace in the Dix Edge Study Area and is a fluent Spanish speaker. He loves spending time with his wife and dog, and in his free time you can find him volunteering at Neighbor2Neighbor or biking on the greenways.

He became an Ambassador because he enjoys spending time with neighbors and serving his community. He believes that to be a Neighbor is a verb that requires positive action. Brock would love to speak with you at any time about this project and he can be reached at BrockElliot21@gmail.com.

Input Opportunities

Community Workshops in August!

In-Person Meeting

August 28th from 12-3pm
Eliza Pool Park

Connectivity

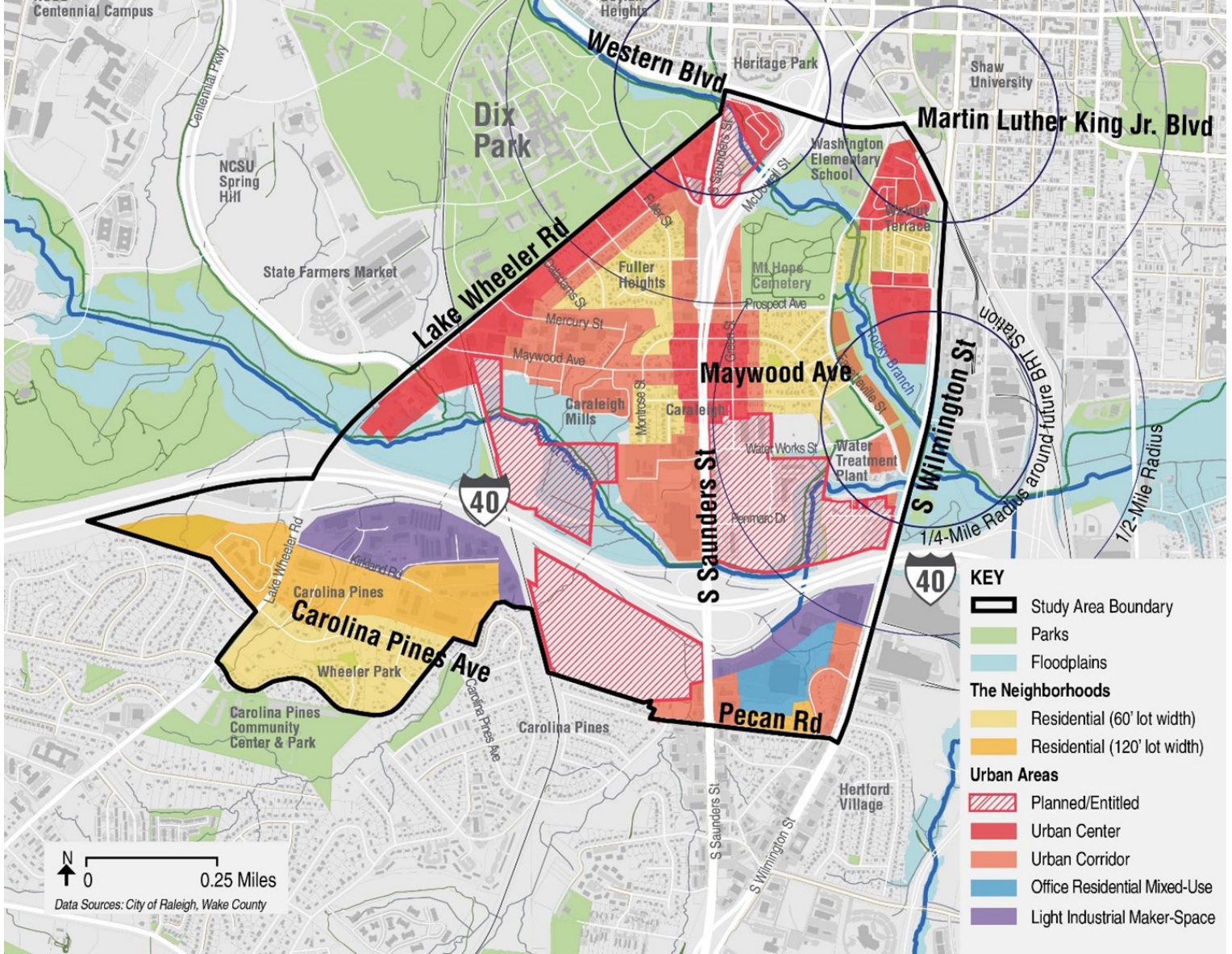
August 31st at 6:30pm (virtual)

Visit raleighnc.gov/dix-edge to learn more.

We want to hear from you!

Take the **Phase Later Survey** to read through the latest version of the study recommendations and let us know how well this is addressing your vision for the future of the Dix Edge area.





Land Use Recommendations

During the Phase Now and Phase Soon engagement, the community shared what they feel is the preferred future land use guidance for development over the next 10-20 years. On August 17, the project team presented the latest version of this guidance to the community for discussion, which includes heights that exceed those preferences. The proposed height increases are to provide additional units in an area where more housing is needed, and may contribute to the affordability in the area by increasing supply.

The key components are:

- A land use pattern with the highest densities centered on major intersections or are within walking distance of future Bus Rapid Transit. These areas are shown in red and would have up to 10 to 12 floors (or up to 20 stories if public benefits like affordable housing are provided) and a mix of uses, including residential.
- An Urban Corridor context for major roads in the study area. These areas are shown in orange and would have no more than 5 stories (or up to 12 stories if public benefits like affordable housing are provided) and a mix of uses, including residential.
- Residential areas shown in yellow that would maintain the residential character and include redevelopment of declining housing units or new infill residential on currently vacant lots. New housing units could include townhouses or small apartment buildings, but there would be no commercial uses.

Have thoughts on these recommendations? Take the [Phase Later online survey!](#)

Looking to stay up to date on the Dix Edge study?

There is a ton of great information on the project [website](#)! Here is what you can find:

- A calendar of scheduled public engagement opportunities
- Information on past and current phases of work
- The Community Snapshot, which is a booklet containing resources on study area data demographics
- Information on other projects happening in the area
- Past copies of the monthly newsletter
- Community Leader Group Meeting Notes and Presentations
- Links to live surveys and responses to previous surveys

Scroll down to the bottom of the page to find all these great resources in the blue box:

RESOURCES

What is Dix Park?

Other Area Projects

Dix Edge Community Snapshot

Community Leader Group Materials

Project Contact Information

Sara Ellis, Project Manager
Sara.Ellis@raleighnc.gov or (919) 996-2234

Fabian Rodriguez (Hablo Español!)
Fabian.Rodriguez@raleighnc.gov
or (919) 996-2439

Visit the website to learn more about engagement opportunities:

raleighnc.gov/dix-edge

Follow the Raleigh Planning social media @RaleighPlanning on Facebook, Instagram, and Twitter!

We share livestreams of our meetings, updates about the project, and current engagement opportunities like surveys.



**Connecting Communities.
Shaping a Shared Future.**