

July
2021



Dix Edge Area Study

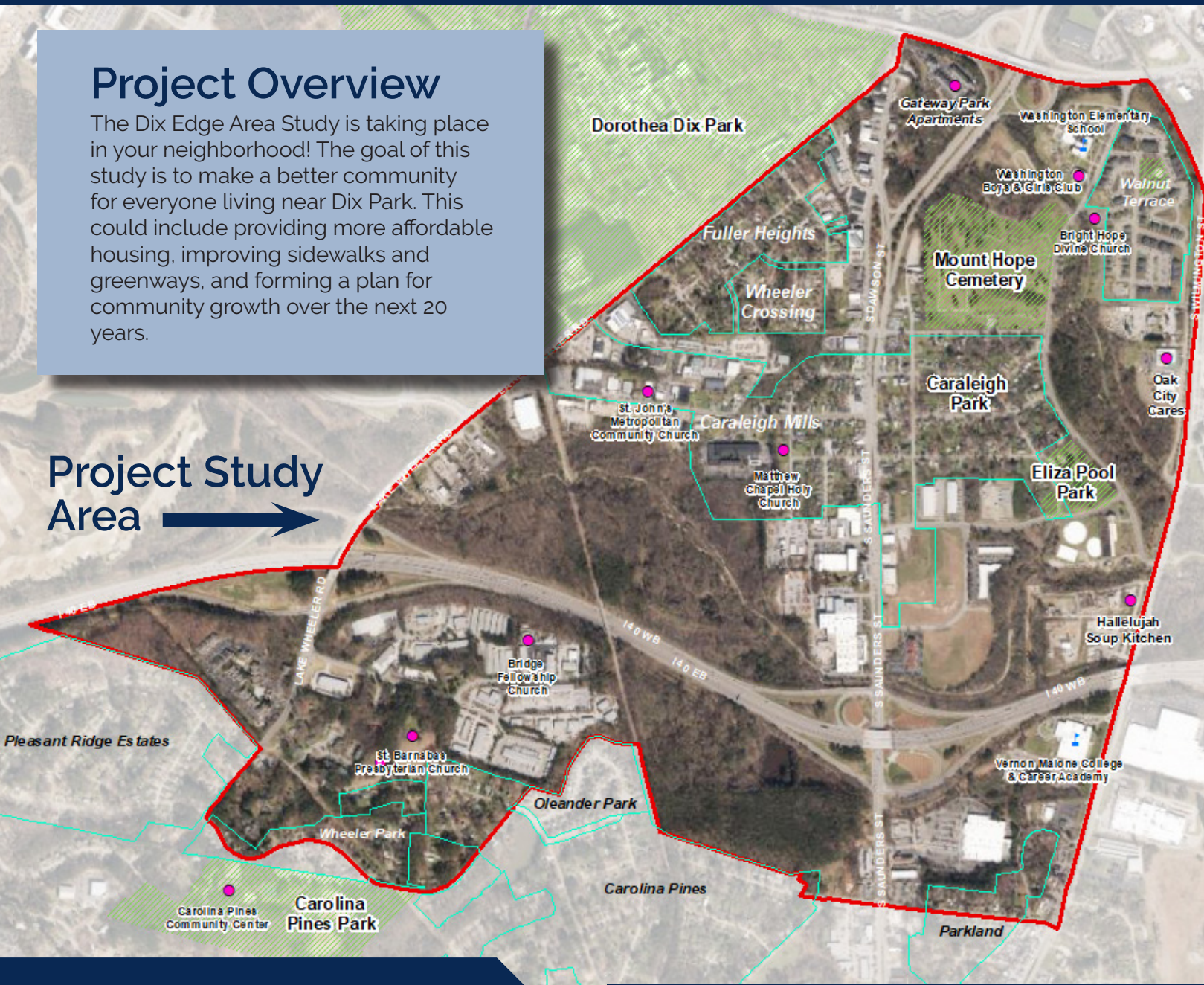
Connecting Communities.
Shaping a Shared Future.

Neighborhood Newsletter

Project Overview

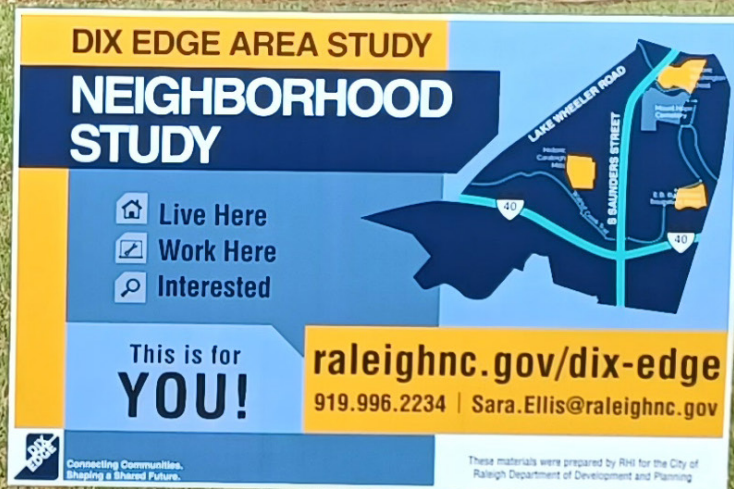
The Dix Edge Area Study is taking place in your neighborhood! The goal of this study is to make a better community for everyone living near Dix Park. This could include providing more affordable housing, improving sidewalks and greenways, and forming a plan for community growth over the next 20 years.

Project Study
Area →



Note from City of Raleigh: These materials were prepared by Public Participation Partners for the City of Raleigh Planning and Development Department

raleighnc.gov/dix-edge



Have you seen this sign?

The project team is always looking for ways to get the word out about the Dix Edge Study. Have you seen our yard signs? These are a great way to share information about the study with your neighbors! **If you are interested in having a sign for your yard or property**, reach out to Project Manager Sara Ellis at sara.ellis@raleighnc.gov or 919.996.2234 and we'll drop one off at your front door!

Input Opportunities

Community Workshops in August!

Affordable Housing & Land Use
August 17th at 6:30pm (virtual)

In-Person Meeting
August 28th from 12-3pm
Eliza Pool Park

Connectivity
August 31st at 6:30pm (virtual)

Visit raleighnc.gov/dix-edge to learn more.

Do you speak Spanish?

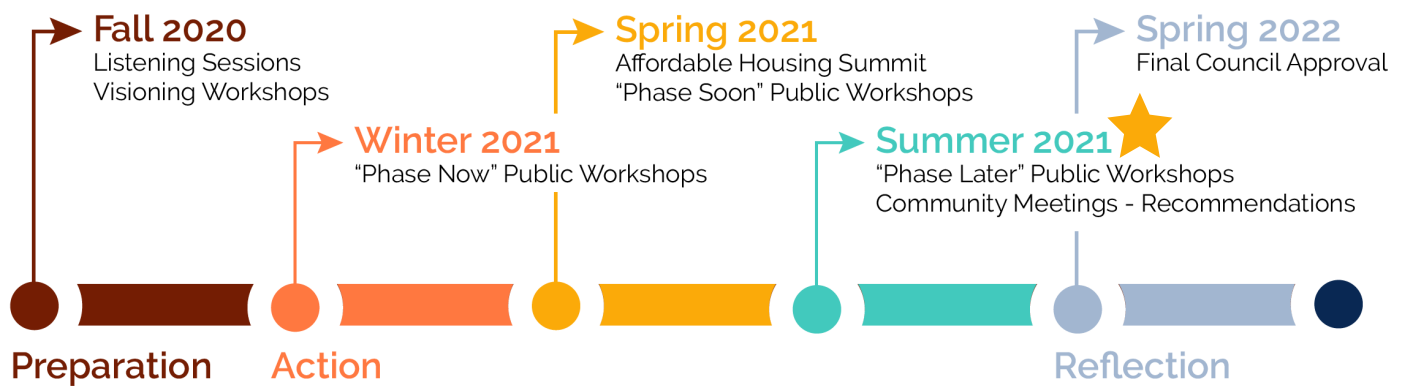
Become a Neighborhood Ambassador!

Community engagement is a central part of the Dix Edge Area Study. Support the study as a Neighborhood Ambassador and help us make crucial connections with the community. Ambassadors are compensated \$15/hour and will receive training. Read more and apply online [here](#).

Opportunity for rebate on energy saving appliances

The Duke Energy Smart Saver Home Improvement Rebate Program provides rebates on Energy Star appliances to eligible customers. Visit the program webpage [here](#).

Project Timeline



Phase Soon Survey Summary

Thank you to everyone who filled out an online or paper Phase Now Survey!

It was open online from May 20th – June 20th, and paper copies of the survey were distributed to Healing Transitions, Washington Elementary School, Washington Elementary School Boys & Girls Club, at State of Beer, and at a Juneteenth Soul Food Reunion event.

This survey built on the results of the previous [Phase Now survey](#) that was live in March and April of 2021 and included questions on Housing and Land Use, Transportation and Natural Resources. A summary of the comments is available on the [website here](#), and the full survey and 661 comments can be [viewed here](#). Below is are some highlights from the responses.

Question about Development

If there is a new development in the Caraleigh, Fuller Heights and Wheeler Crossing residential neighborhoods (between Water Works, Lake Wheeler Road, and Prospect Ave), which of the following would you like it to include? Please select all that apply.

Question 4 Results

- 48% Front porches
- 39% Driveway parking
- 30% Street parking
- 26% No taller than 5 stories
- 21% No taller than 3 stories
- 19% Taller than 5 stories
- 18% I do not have a preference
- 17% Residential only/no commercial
- 13% No taller than 4 stories

» 366 Respondents to Question 4

Summary of comments: The comments fell into the following buckets: desire to preserve the one-story mill village look of the area, reduce the City's parking requirements, increase the City's parking requirements, ensuring there is good transit if density increases and a desire to help and encourage small businesses to come to the area.

Streets for People

Participants were asked which Lake Wheeler Rd and which S. Saunders St street design options they preferred. Participants ranked three options for each in order of their preference and provided comments on what they did or did not like about the options.

Lake Wheeler Rd Design

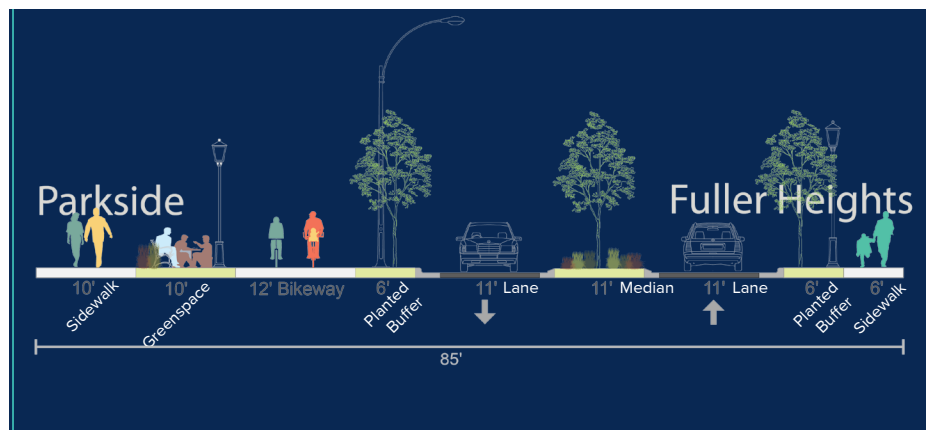
Option B – Green Stormwater Infrastructure Median received the most votes at 234 votes

Three options were provided for new Lake Wheeler Road Designs and the option that got the most votes is shown above. **A more detailed mockup of what this design will look like will be shown during the Connectivity meetings in August.** The three options and more information about the benefits and tradeoffs of each can be found in the [Connectivity recommendations here](#) on page 8 – 11.

S. Saunders St Design

Option C - Elevated and Separated Bike Path received the most votes at 202 votes

Similar to Lake Wheeler Road, three options were provided for a new S. Saunders Street Design and the option that got the most votes is shown below. **A more detailed mockup of what this design will look like will be shown during the Connectivity meetings in August.** The three options and more information about the benefits and tradeoffs of each can be found in the [Connectivity recommendations here](#) on page 12 – 15.



Lake Wheeler Rd Designs

Option B - Green Stormwater Infrastructure Median

75%

Option A - Planted Median

56%

Option C - No Median

47%

» 313 Respondents

S. Saunders St Designs

Option C - Elevated and Separated Bike Path

72%

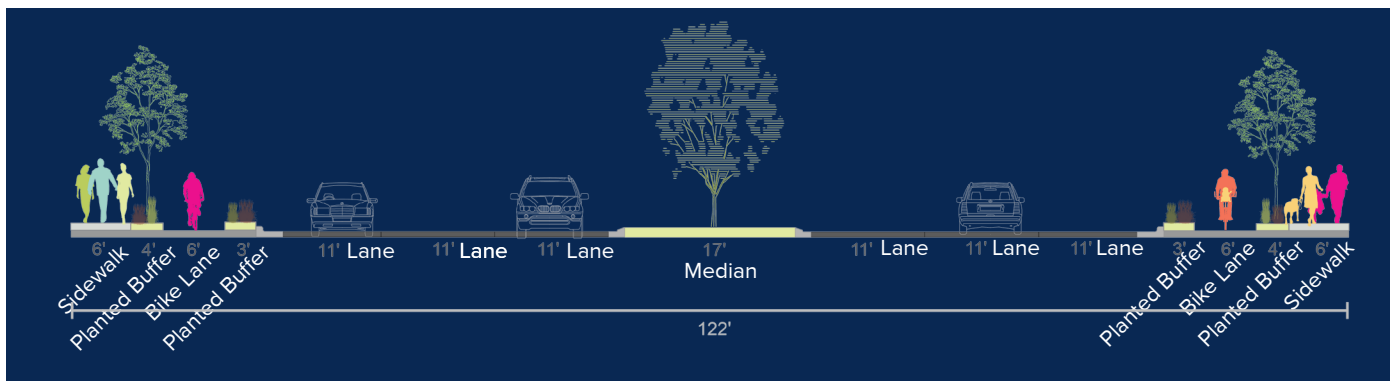
Option B - In Street Separated Bike Lane + Sidewalk

59%

Option A - Mixed Use Path

60%

» 280 Respondents



Looking to stay up to date on the Dix Edge study?

There is a ton of great information on the project [website](#)! Here is what you can find:

- A calendar of scheduled public engagement opportunities
- Information on past and current phases of work
- The Community Snapshot, which is a booklet containing resources on study area data demographics
- Information on other projects happening in the area
- Past copies of the monthly newsletter
- Community Leader Group Meeting Notes and Presentations
- Links to live surveys and responses to previous surveys

Scroll down to the bottom of the page to find all these great resources in the blue box:

RESOURCES

What is Dix Park?

Other Area Projects

Dix Edge Community Snapshot

Community Leader Group Materials

Project Contact Information

Sara Ellis, Project Manager
Sara.Ellis@raleighnc.gov or (919) 996-2234

Fabian Rodriguez (Hablo Español!)
Fabian.Rodriguez@raleighnc.gov
or (919) 996-2439

Visit the website to learn more about engagement opportunities:

raleighnc.gov/dix-edge

Follow the Raleigh Planning social media @RaleighPlanning on Facebook, Instagram, and Twitter!

We share livestreams of our meetings, updates about the project, and current engagement opportunities like surveys.



**Connecting Communities.
Shaping a Shared Future.**