



Dix Edge Area Study

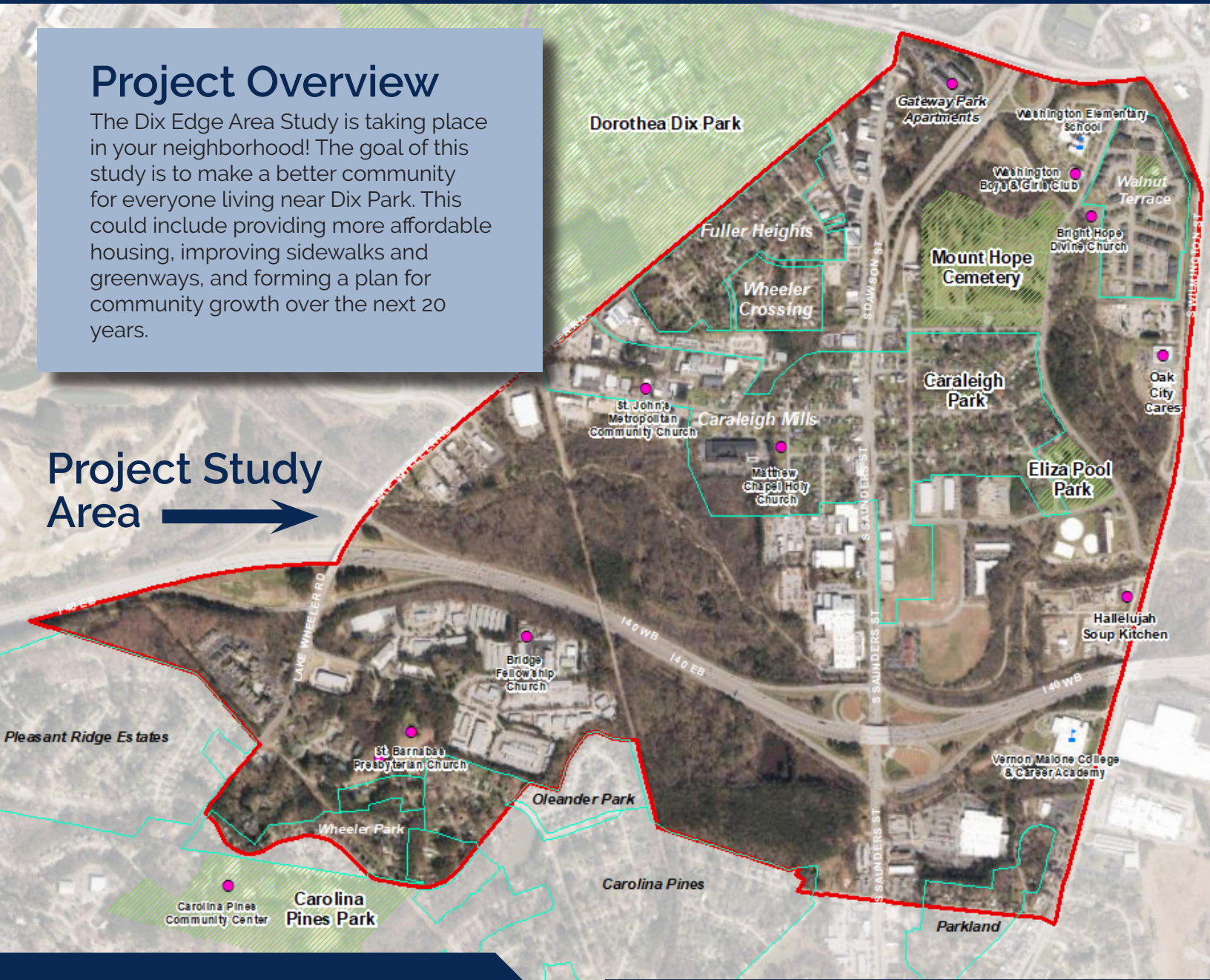
Connecting Communities.
Shaping a Shared Future.

Neighborhood Newsletter

Project Overview

The Dix Edge Area Study is taking place in your neighborhood! The goal of this study is to make a better community for everyone living near Dix Park. This could include providing more affordable housing, improving sidewalks and greenways, and forming a plan for community growth over the next 20 years.

Project Study Area →



Note from City of Raleigh: These materials were prepared by Public Participation Partners for the City of Raleigh Planning and Development Department

raleighnc.gov/dix-edge



The Study has one more phase!

We have completed Phase Later of the study and are now drafting the recommendations for the Dix Edge Area Study. The recommendations will be available for public review in November 2021. The recommendations will then be reviewed by City Council in early 2022.

Introducing our new Project Manager Matt Klem!

We'll miss Sara Ellis as she pursues her next adventure, but we're excited to have you meet the Dix Edge Area Study's new Project Manager Matt Klem.

You'll see him during the next phase events or feel free to reach out at:
 Matthew.Klem@raleighnc.gov or 919-996-4637.

Have thoughts on how we can improve our outreach? We want to hear them!

Outreach is so central to small area plans like the Dix Edge Area Study, and we want to continue to improve. To understand who we are reaching, we ask some voluntary demographics questions at the end of every survey. Currently, the demographics of survey respondents do not match the demographics of the study area. If you have thoughts on how we can improve and reach a broader swath of the community, we'd love to hear them!

Take this short survey to share your thoughts:
<https://publicinput.com/J8817>.

Looking to stay up to date on the Dix Edge study?

There is a ton of great information on the project [website](#)! Here is what you can find:

- A calendar of scheduled public engagement opportunities
- Information on past and current phases of work
- The Community Snapshot, which is a booklet containing resources on study area data demographics
- Information on other projects happening in the area
- Past copies of the monthly newsletter
- Community Leader Group Meeting Notes and Presentations
- Links to live surveys and responses to previous surveys

Scroll down to the bottom of the page to find all these great resources in the blue box:

RESOURCES

[What is Dix Park?](#)

[Dix Edge Community Snapshot](#)

[Other Area Projects](#)

[Community Leader Group Materials](#)

Project Contact Information

Matt Klem, Project Manager
Matthew.Klem@raleighnc.gov
or (919) 996-4637

Fabian Rodriguez (Hablo Español!)
Fabian.Rodriguez@raleighnc.gov
or (919) 996-2439

Visit the website to learn more about engagement opportunities:

raleighnc.gov/dix-edge

Follow the Raleigh Planning social media @RaleighPlanning on Facebook, Instagram, and Twitter!

We share livestreams of our meetings, updates about the project, and current engagement opportunities like surveys.



**Connecting Communities.
Shaping a Shared Future.**