



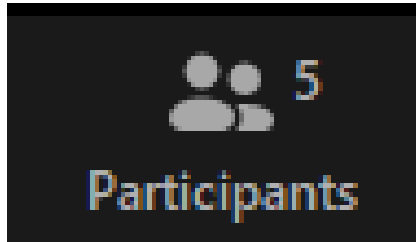
Connecting Communities.
Shaping a Shared Future.



Transportation

Dix Edge Area Study | Phase Later Workshop | August 2021

Please Raise Your Hand



1. Click “Participants” in the bottom toolbar



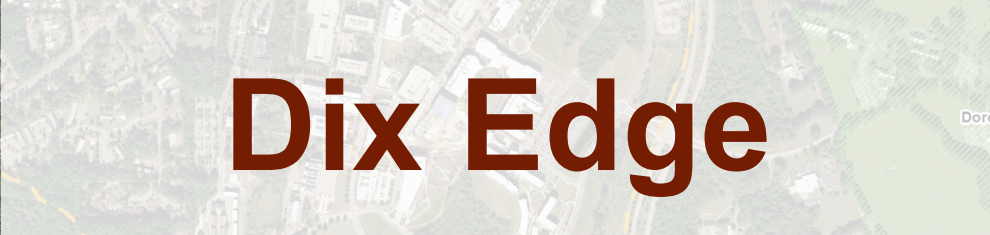
2. Click “Raise Hand” in the participant menu

Agenda

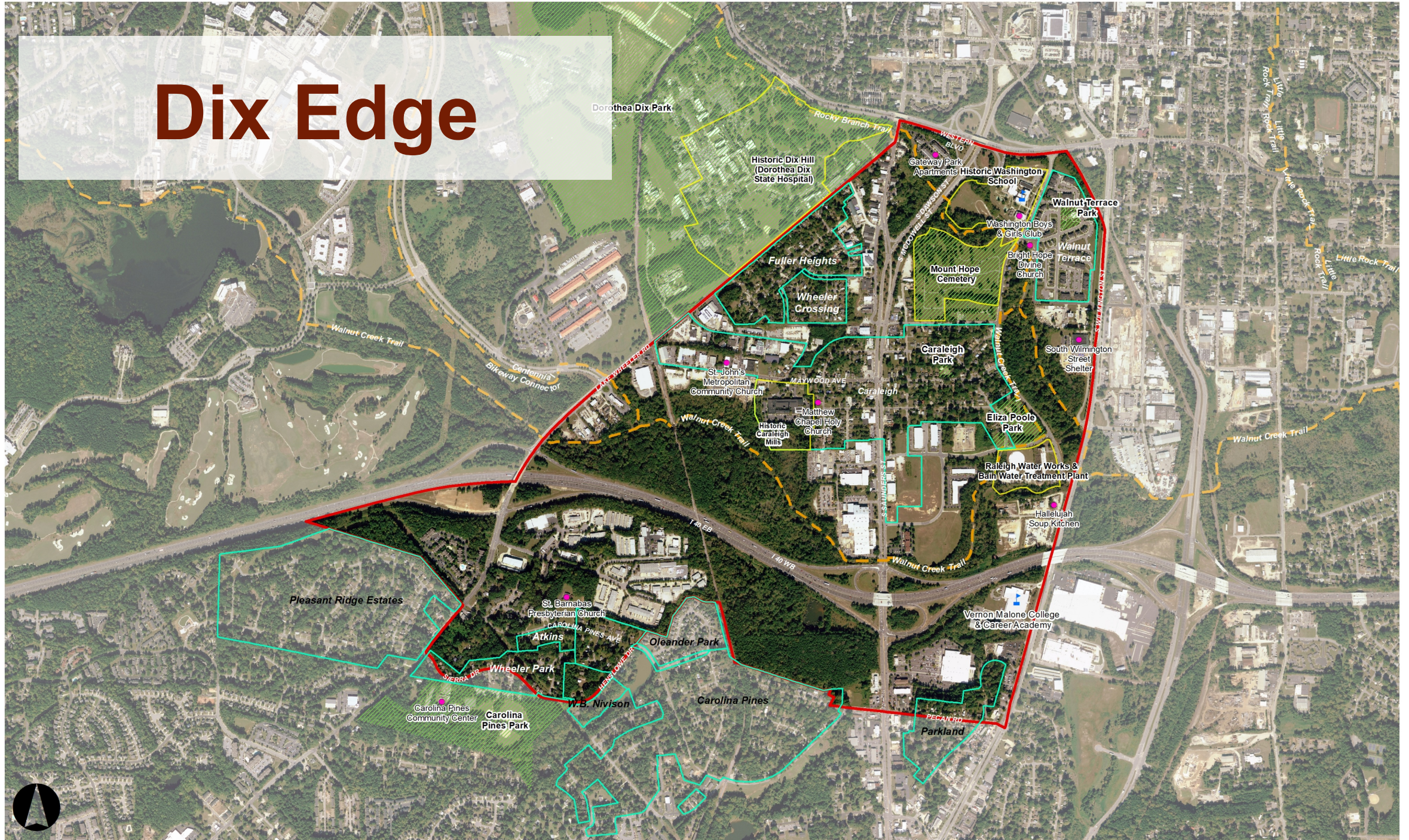
A decorative horizontal line with six colored segments: dark brown, orange, yellow, teal, light blue, and dark blue. Each segment is flanked by a white circle containing a smaller circle of the same color as the segment.

- Proposed New Streetscape
 - Lake Wheeler
 - South Saunders
 - Hammell
- Transit Amenities and Recommendations
- Survey response Map
- Related Projects

Take the
survey!!



Dix Edge





Dix Edge Area Study Timeline



Connecting Communities.
Shaping a Shared Future.



Streetscape Lake Wheeler

Lake Wheeler Road Streetscape

Dix Park

S Saunders St

Fuller
Heights

Farmers Market

Lake Wheeler Rd

Maywood Ave



Lake Wheeler Road Roundabouts



Hammell Dr

Dix Park

Fuller Heights

Daladams St

Mercury St

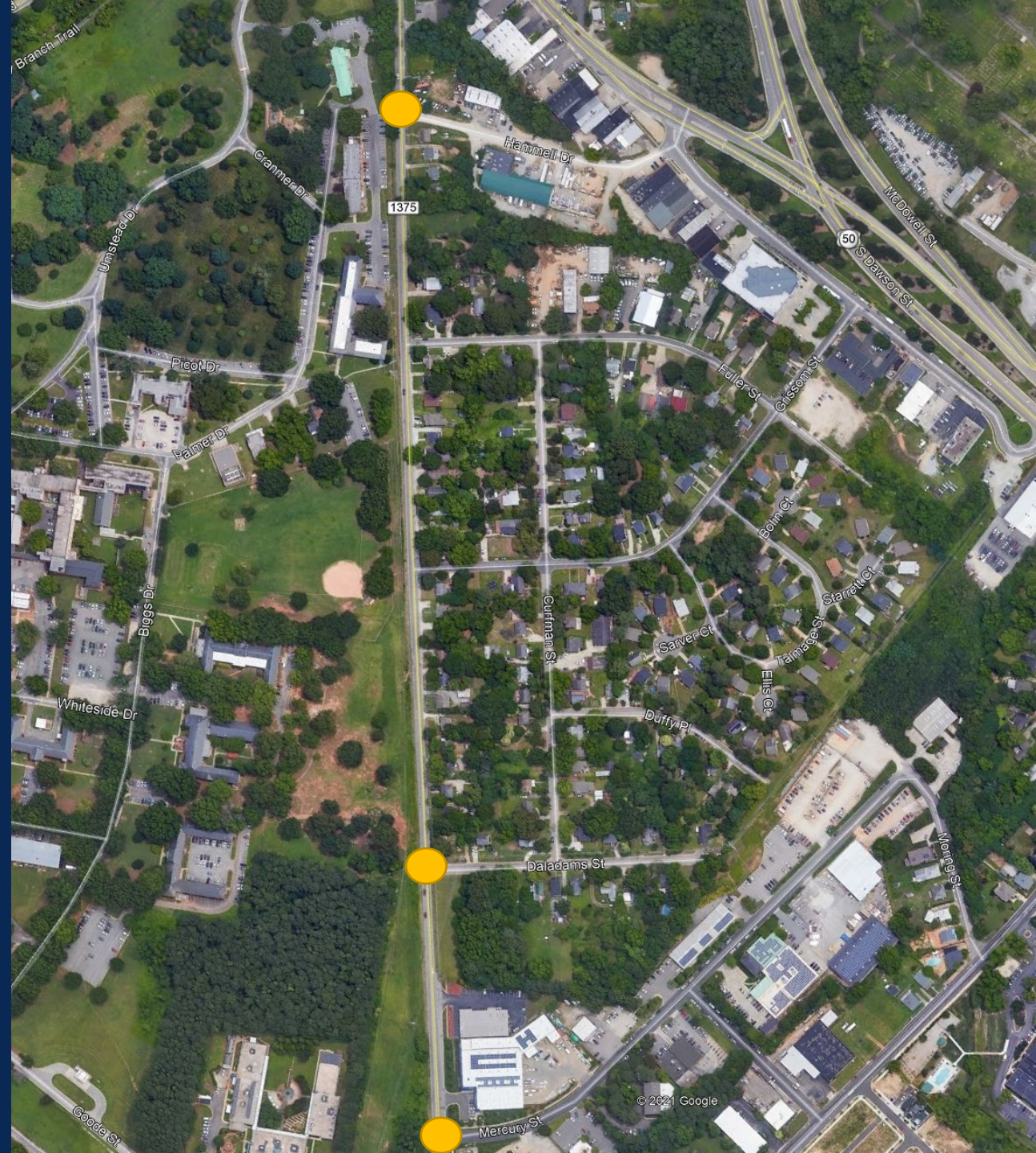
Farmers Market

Lake Wheeler Rd

Maywood Ave

Lake Wheeler Road Intersections

- The next phase of work on Lake Wheeler will look at how to design the intersections in a way that moves cars and people through safely.
- Potential round-about locations:
 - Hammell at Lake Wheeler
 - Daladams at Lake Wheeler
 - Mercury at Lake Wheeler



Lake Wheeler Road Today



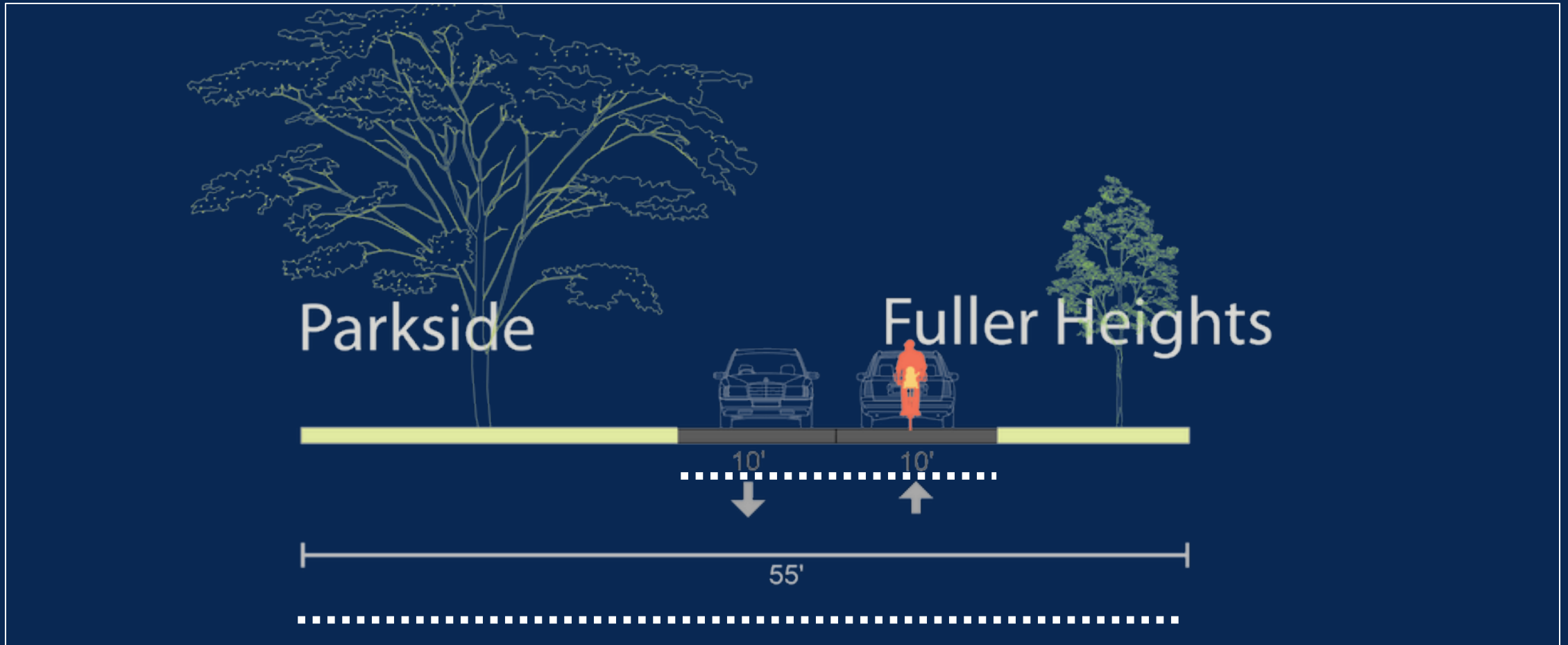
Lake Wheeler Road Today



Lake Wheeler Road Today



Lake Wheeler Road Streetscape Today



Lake Wheeler Road Streetscape Option B



DIX PARK

FULLER
HEIGHTS

Separated Sidewalks

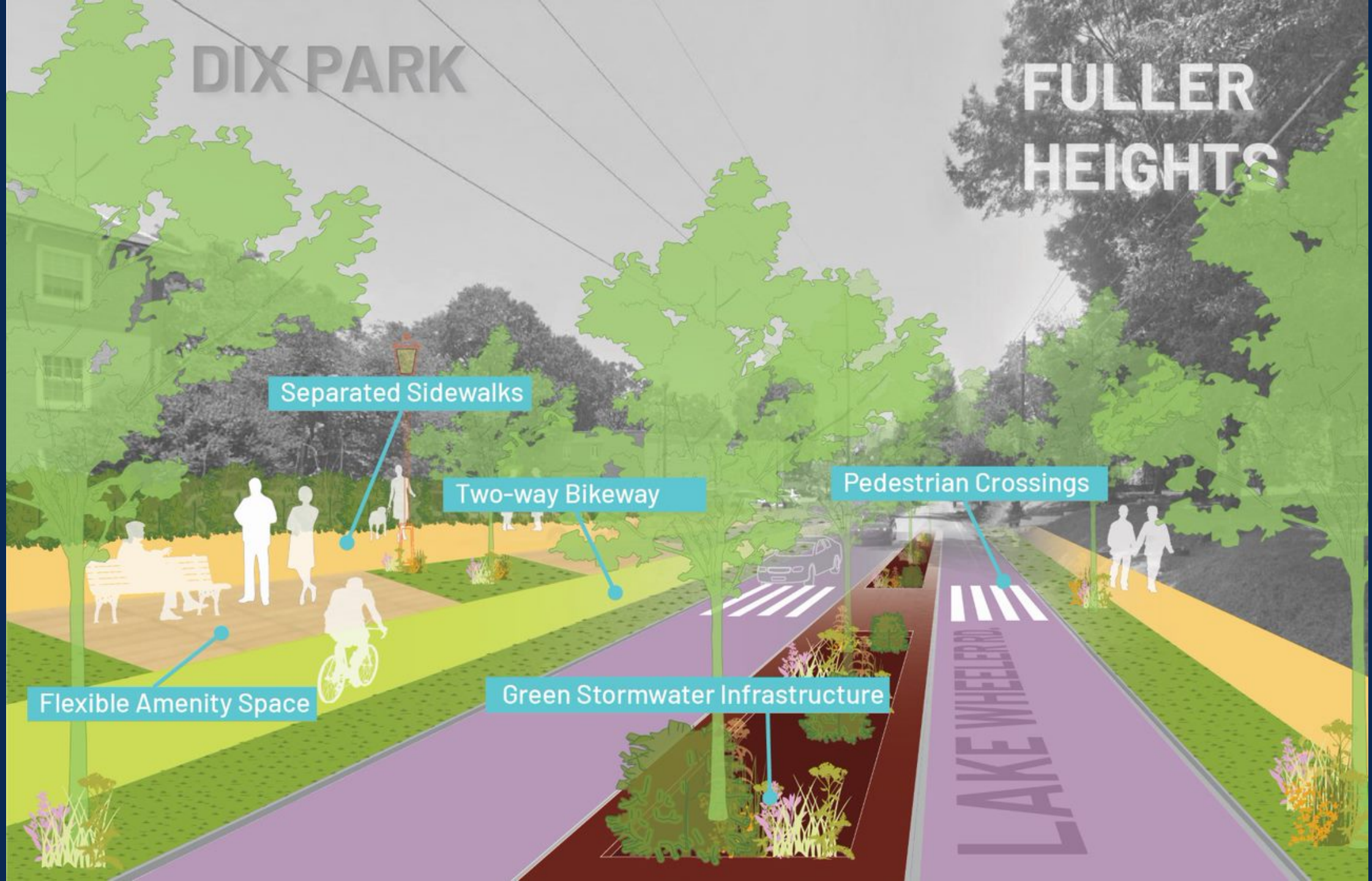
Two-way Bikeway

Pedestrian Crossings

Flexible Amenity Space

Green Stormwater Infrastructure

LAKE WHEELER



LAKE WHEELER ROAD IMPROVEMENT PROJECT



Meet the Team

City of Raleigh, Engineering Services

Brian Roth-Roffy, Senior Project Manager

Tiffanie Mazanek, Communications Specialist

City of Raleigh, Department of Transportation

Fontaine Burruss, Transportation Planner

Rob Murray, Communications Specialist



Pre-Design

- Intersection Design
- Finalize cross-section
- Public-touch point

Full Design

- Full, detailed design
- Utilities coordination
- Grading
- Stormwater
- Right-of-way allocation
- Public-touch point

Project Schedule



Questions?

Brian.Roth-Roffy@RaleighNC.gov

Fontaine.Burruss@RaleighNC.gov

Lake Wheeler Road Design Poll



Connecting Communities.
Shaping a Shared Future.



Streetscape South Saunders

South Saunders Street Streetscape

Fuller
Heights

Southern
Gateway
Study

Prospect Ave

Summit Ave

Caraleigh

Maywood Ave

Gilbert Ave

Downtown
South Plans
under review

Penmarc Dr



South Saunders Today



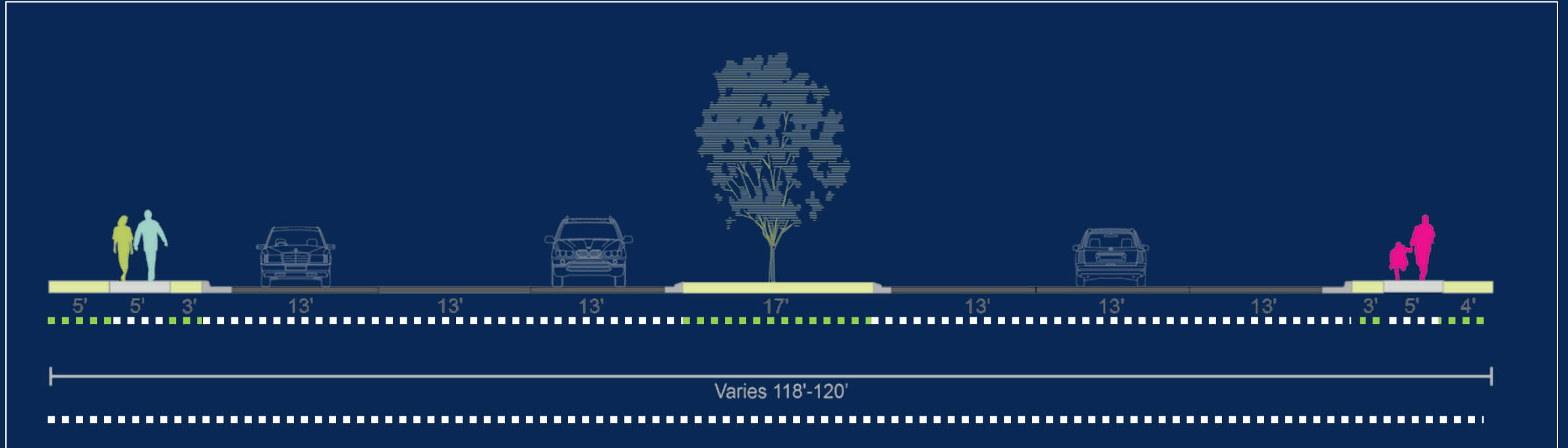
South Saunders Today



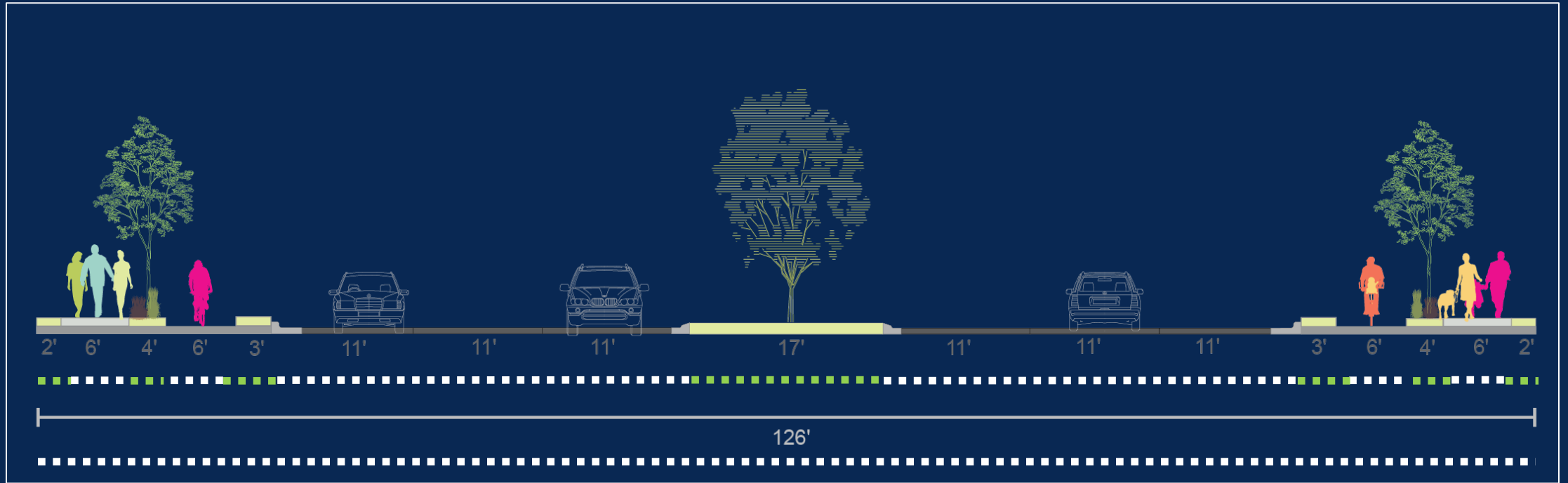
South Saunders Today



South Saunders Today



South Saunders Option C





S. Saunders Road Design Poll



Connecting Communities.
Shaping a Shared Future.



Streetscape Hammell

Hammell Drive Streetscape

Dix Park

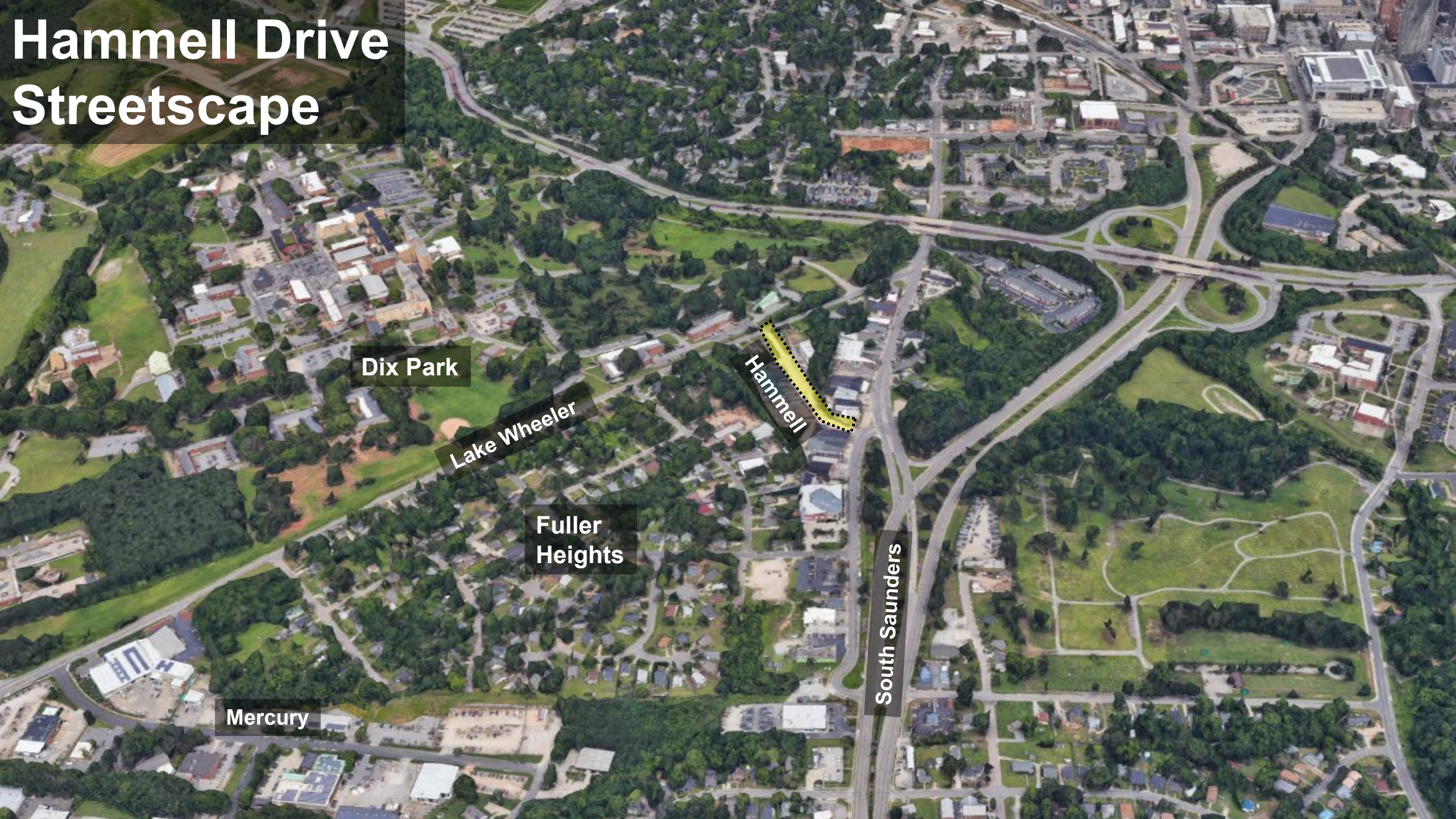
Lake Wheeler

Fuller
Heights

Mercury

Hammell

South Saunders



Hammell Today



Hammell Today



Hammell Today



Hammell Streetscape





DIX PARK

Buffered Bike Lane

Buffered Sidewalk

HAMMEL DRIVE

Hammel Drive Road Design Poll

Group Discussion



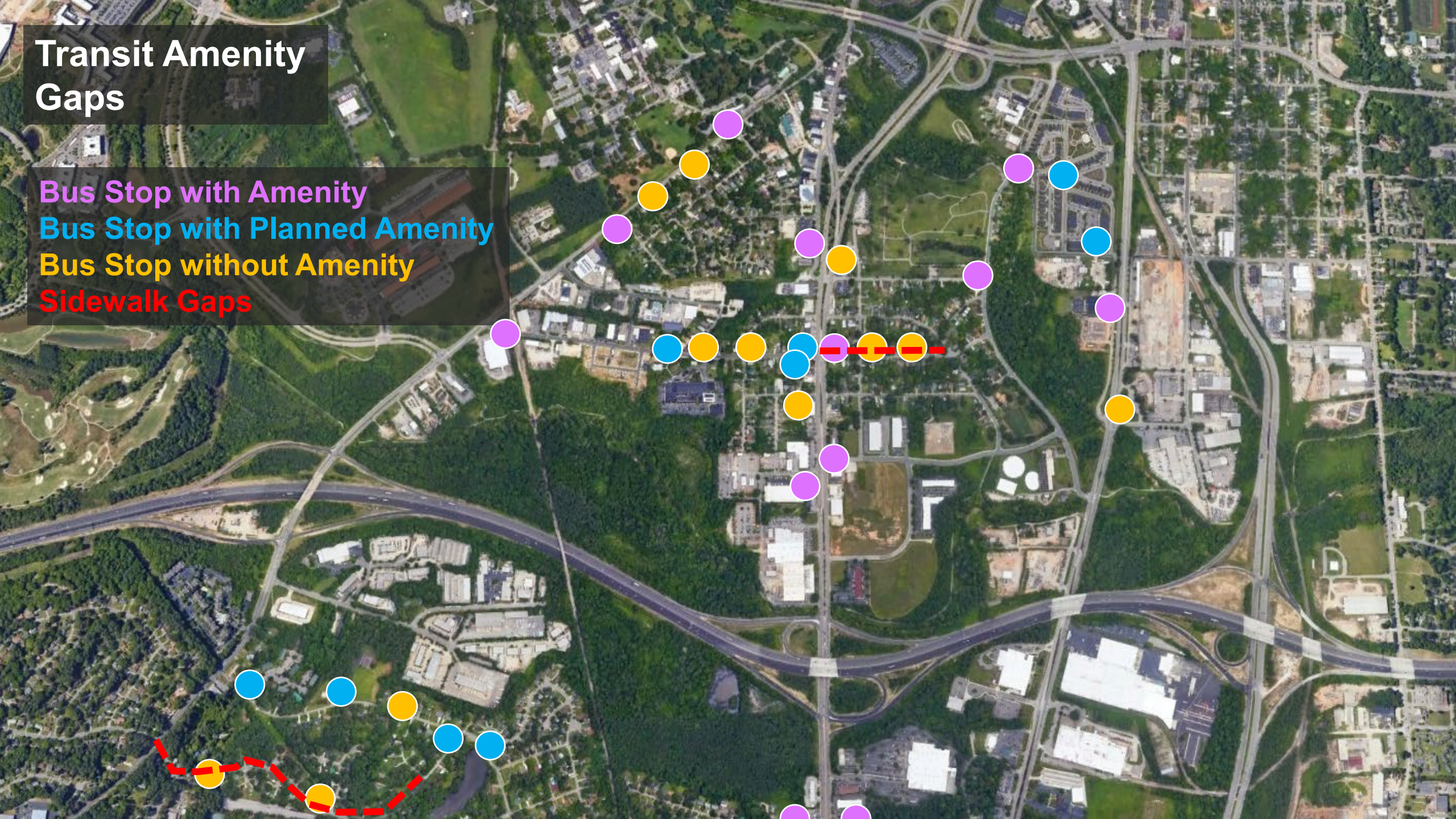
Connecting Communities.
Shaping a Shared Future.



Transit Amenities and Recommendations

Transit Amenity Gaps

- Bus Stop with Amenity
- Bus Stop with Planned Amenity
- Bus Stop without Amenity
- Sidewalk Gaps



Transit Recommendations

Short Term (Now - 2030)

1. Request Capital Improvement Funding through Wake Transit Plan to improve bus stop infrastructure
1. Use high-visibility green pavement to improve bike safety where buses enter bike lanes to serve stops
2. Integrate scooter and bike share stations with bus stops
3. When bus stops reach over 75 boardings per day, provide enhanced amenities
4. When stops qualify for a shelter, incorporate a “bus stop bulb” to allow the bus to stop for passengers without leaving lane
5. Combine BRT and fixed route Transit stops and provide enhanced amenities

Long Term (2030 – 2050)

1. 2-Way Service for Route 21 Caraleigh
2. Study new route from Downtown to Tryon Road along Lake Wheeler to improve service south of I-40.
3. Study feasibility of new east/west bus route inside beltline to connect southern BRT to Western BRT.
4. Partner with private shuttle services (such as Village Green) to synchronize service



Connecting Communities.
Shaping a Shared Future.



Transportation Survey Responses

Planned Transportation Projects

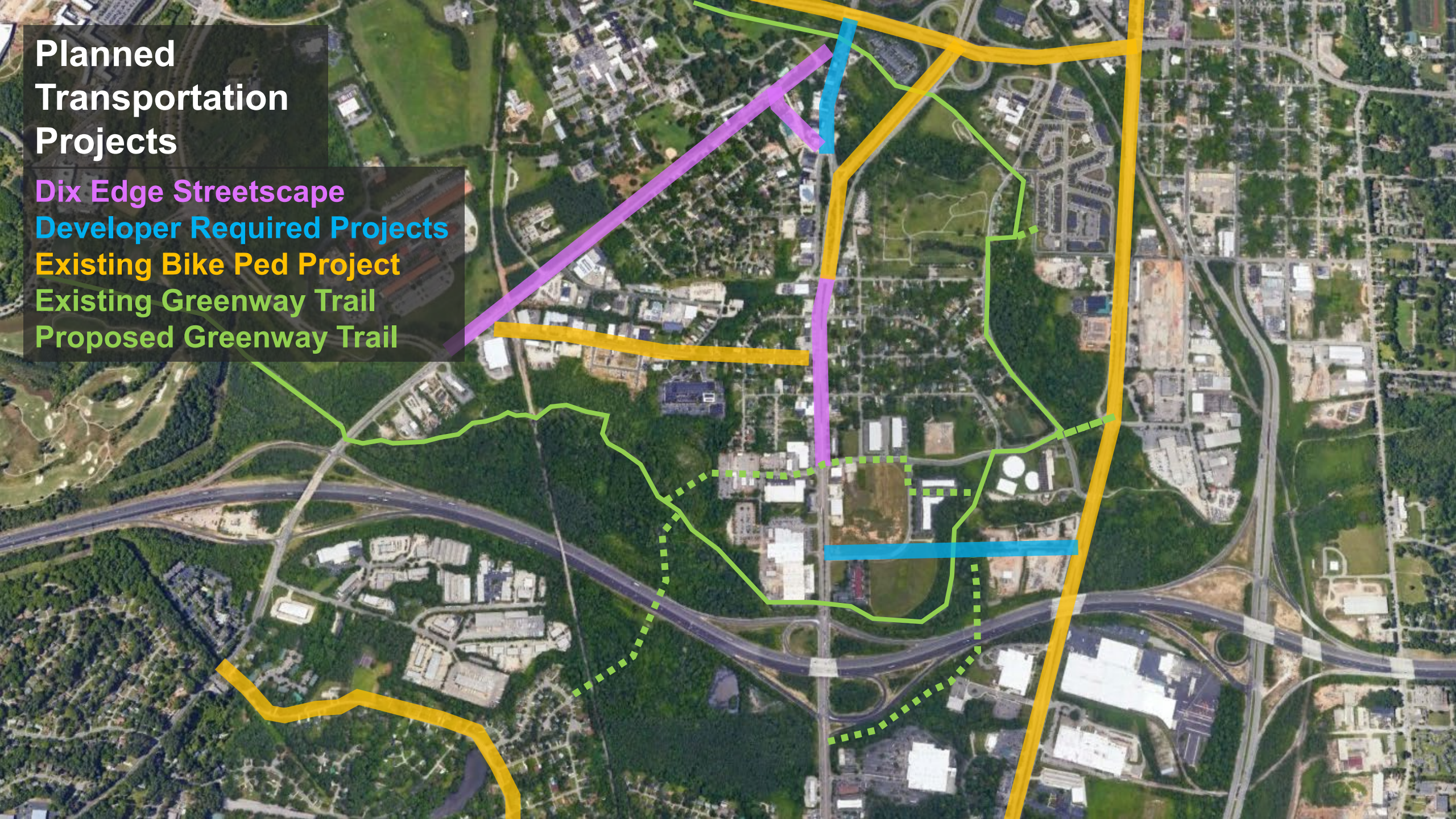
Dix Edge Streetscape

Developer Required Projects

Existing Bike Ped Project

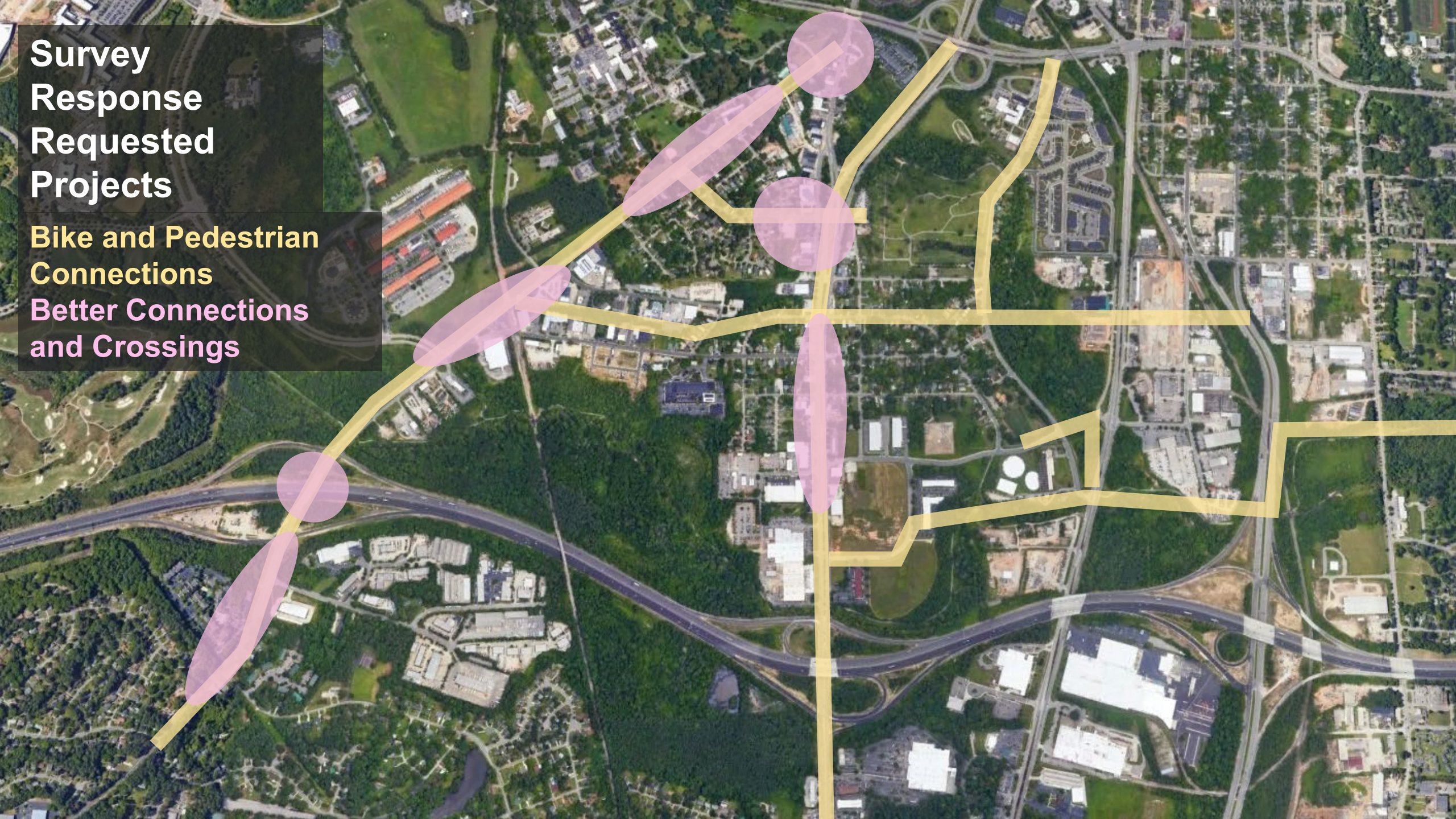
Existing Greenway Trail

Proposed Greenway Trail



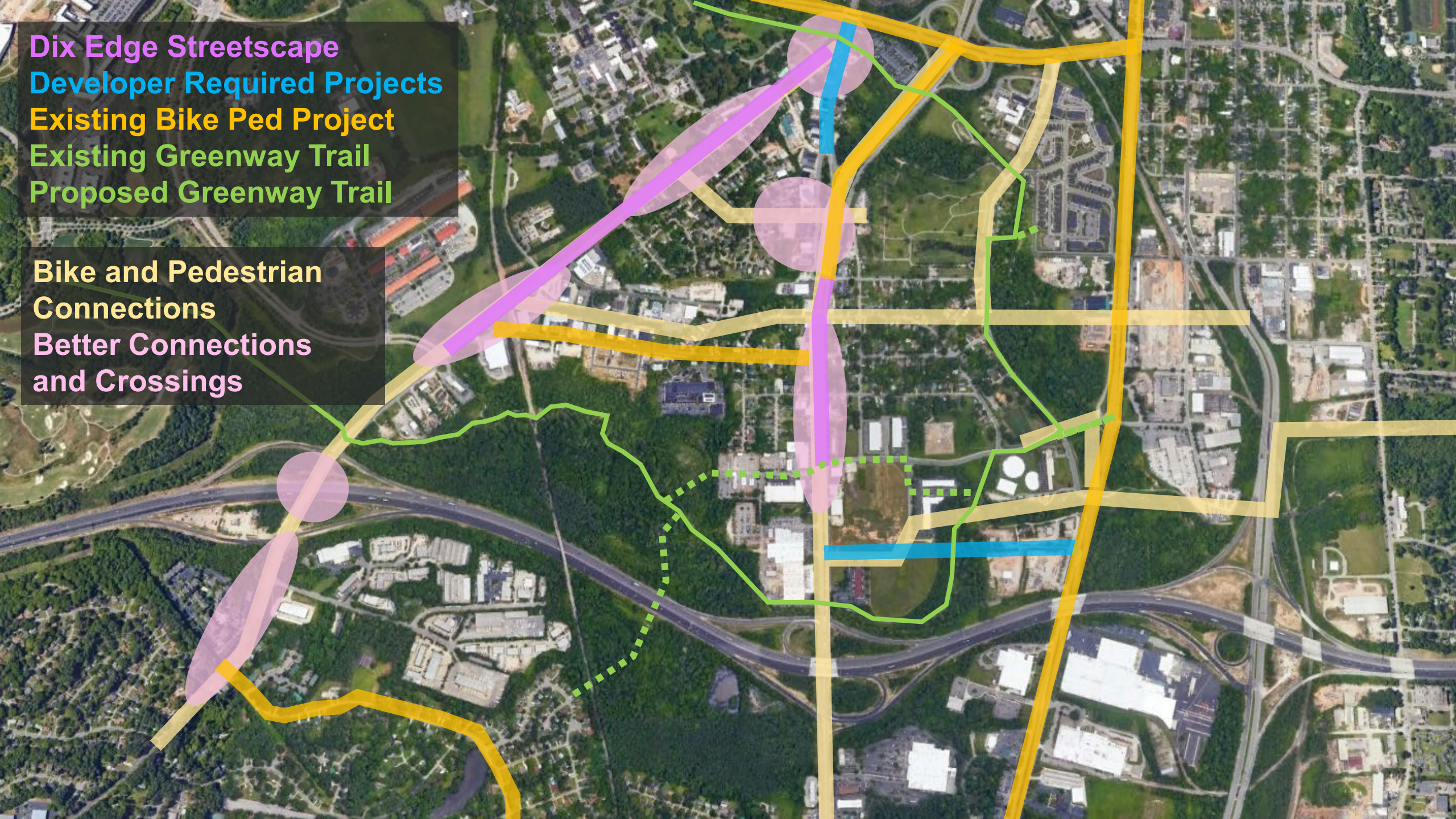
**Survey
Response
Requested
Projects**

**Bike and Pedestrian
Connections
Better Connections
and Crossings**



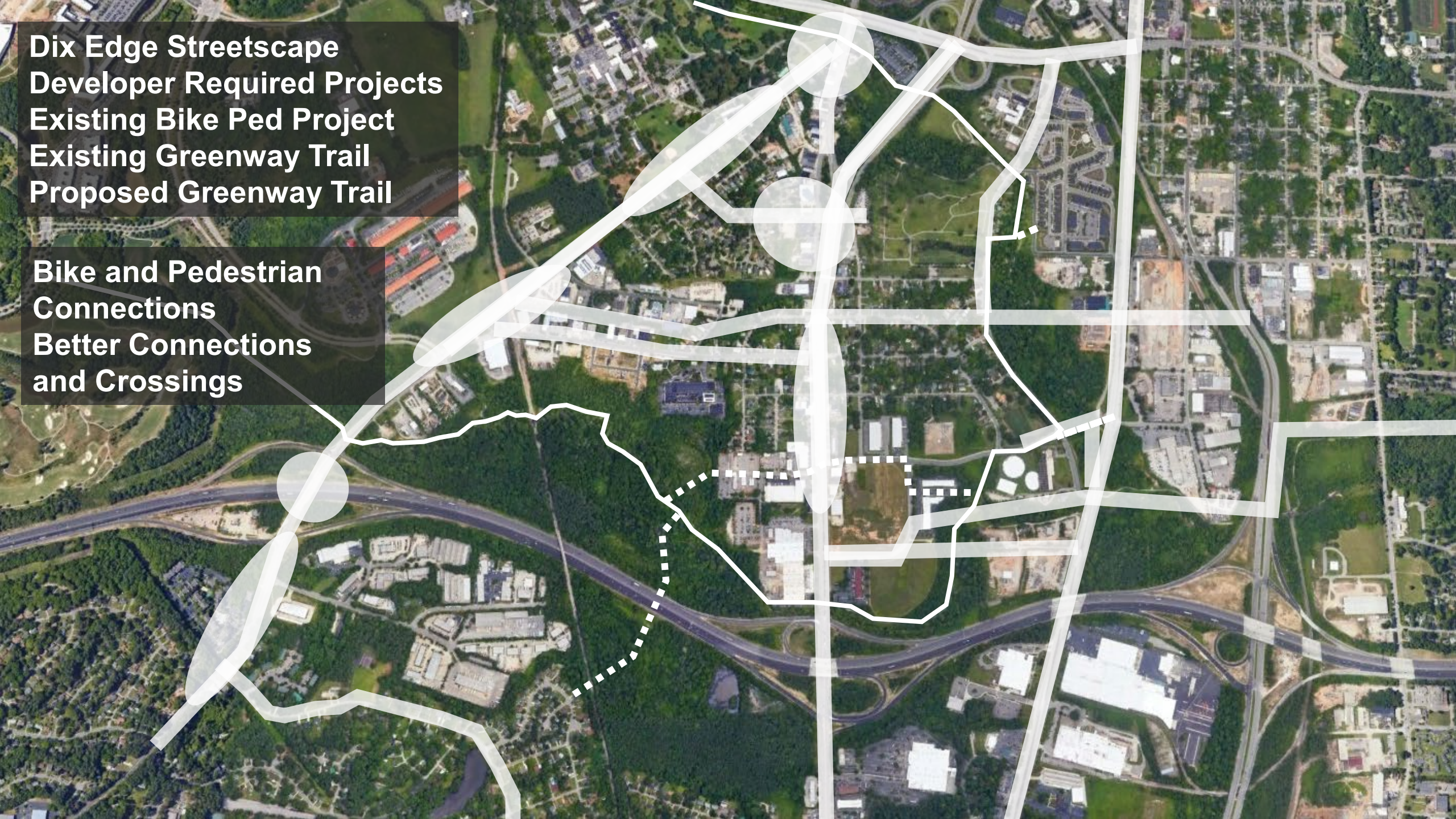
Dix Edge Streetscape
Developer Required Projects
Existing Bike Ped Project
Existing Greenway Trail
Proposed Greenway Trail

Bike and Pedestrian
Connections
Better Connections
and Crossings



**Dix Edge Streetscape
Developer Required Projects
Existing Bike Ped Project
Existing Greenway Trail
Proposed Greenway Trail**

**Bike and Pedestrian
Connections
Better Connections
and Crossings**



**Planned
Improvements**
**Dix Edge
Improvements**





**Connecting Communities.
Shaping a Shared Future.**



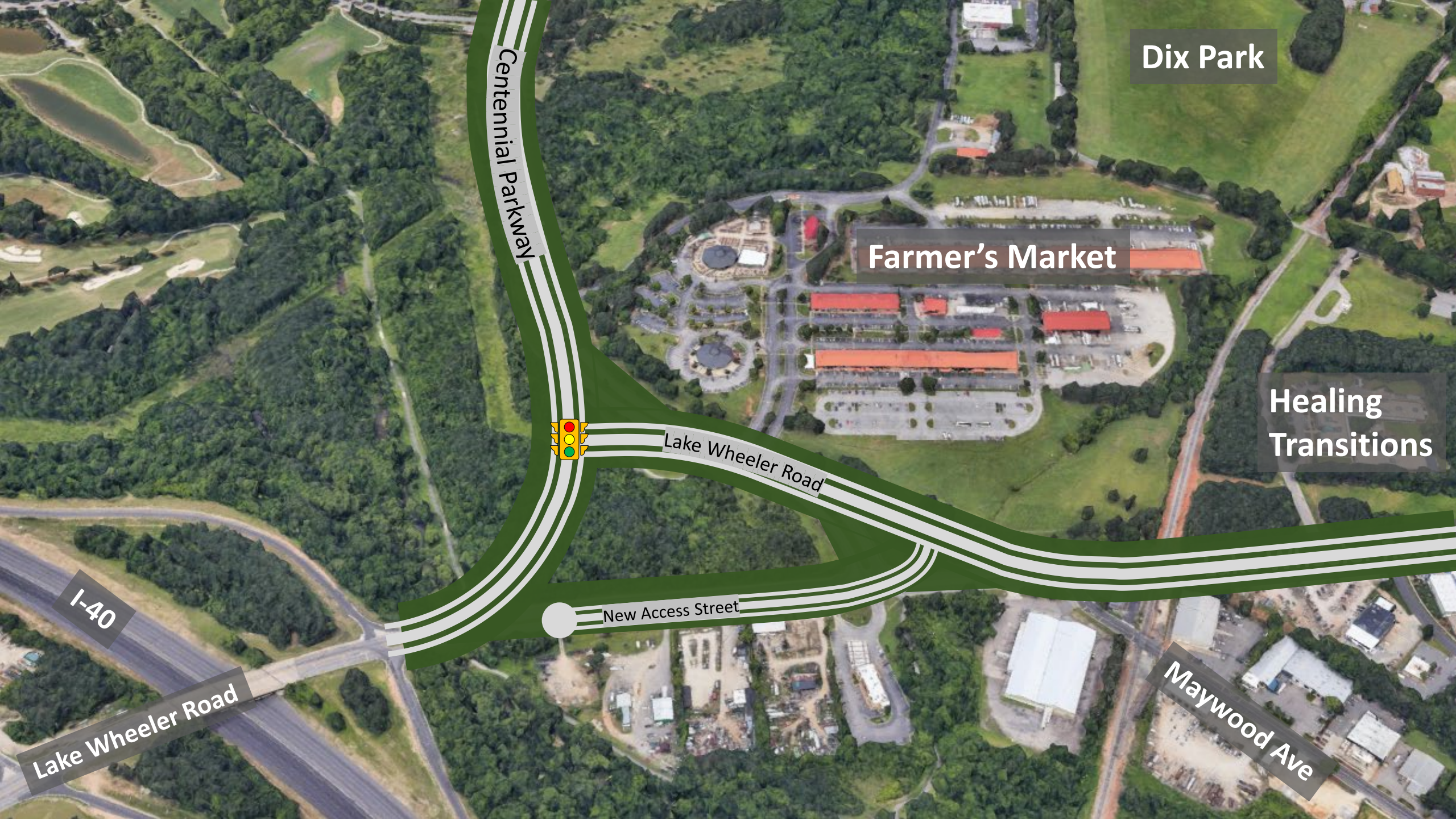
Related Projects



Connecting Communities.
Shaping a Shared Future.



Centennial Realignment



Centennial Parkway

Dix Park

Farmer's Market

Healing Transitions

Lake Wheeler Road

New Access Street

Maywood Ave

I-40

Lake Wheeler Road



Connecting Communities.
Shaping a Shared Future.



Dix Park Plaza and Play



Q&A

Dix Edge

Dorothea Dix Park

Historic Dix Hill
(Dorothea Dix
State Hospital)

Lake Wheeler Road

Rocky Branch Trail

Mount Hope
Cemetery

Historic
Washington
School

Historic
Caraleigh
Mills

E.B. Bain Water
Treatment
Plant

Walnut Creek Trail

I-40

Pleasant Ridge Estates

Oleander Park

Carolina Pines
Community Center

Carolina
Pines Park

W.B. Nivison

Carolina Pines

Parkland





**Connecting Communities.
Shaping a Shared Future.**

Contact Info

Sara Ellis

City Project Manager

Sara.Ellis@raleighnc.gov

(919) 996-2234

raleighnc.gov/dix-edge