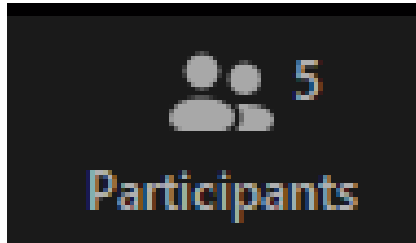




Visioning Workshops

Dix Edge Area Study | November 2020

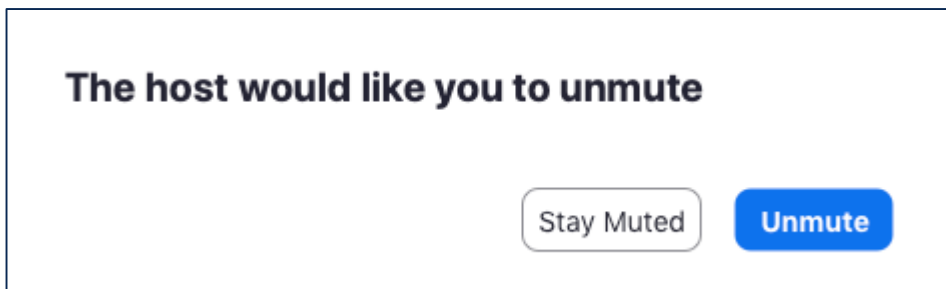
Please Raise Your Hand



1. Click “Participants” in the bottom toolbar




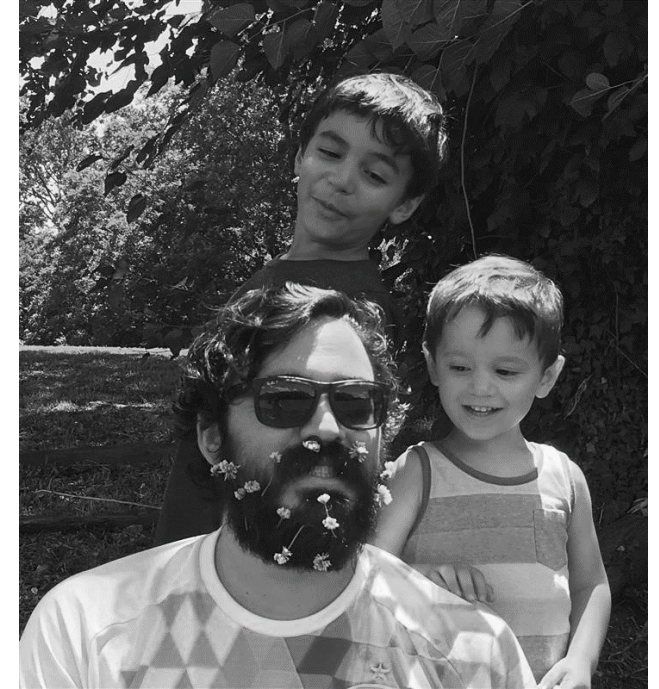
2. Click “Raise Hand” in the participant menu



3. Click “Unmute” when prompted by the host

Agenda

- 
- Welcome and Introductions
 - Presentation about the project
 - Question and Answer Session
 - Small Group Breakout Room Activity
 - Activity Report Out in the Large Group
 - Question and Answer Session
 - Thank you and project contact information



Sara Ellis

City Project Manager
City of Raleigh Planning
and Development Department

**Hannah
Reckhow**

Planner II
City of Raleigh Planning
and Development Department

**Bynum
Walter**

Senior Planner
City of Raleigh Planning
and Development
Department

Matt Klem

Assistant Project
Manager
City of Raleigh Planning
and Development
Department

Project Team



**Deana Rhodeside
& Sukirti Ghosh**
Lead, Land Use,
& Urban Design



LaToya Thomas
Neighborhood Story



**Simone Robinson
& Deirdre Scanlon**
Community Engagement



**Russell Archambault
& Warren Campbell**
Economics, Market, & Housing



Cliff Lawson & Paul Trapp
Transportation & Infrastructure



Geoff Ferrell
Land Use Policies
including zoning & codes

Dix Edge Study Area

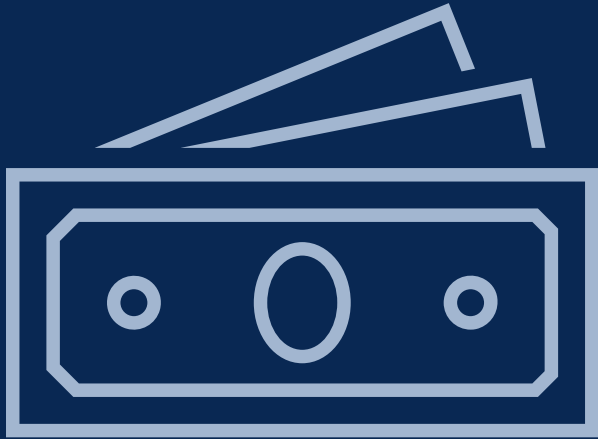
This aerial map illustrates the Dix Edge Study Area, which is outlined in red. The area is divided into several distinct regions, each outlined in green or yellow. Key landmarks and features include:

- Dorothea Dix Park** and **Rocky Branch Trail** in the north.
- Historic Dix Hill (Dorothea Dix State Hospital)** and **Fuller Heights** in the north-central area.
- Gateway Park Apartments**, **Historic Washington School**, **Washington Boys & Girls Club**, **Bright Hope Divine Church**, **Mount Hope Cemetery**, and **Walnut Terrace Park** in the northeast.
- Walnut Terrace** and **Walnut Creek** in the east.
- Caraleigh Park**, **Caraleigh**, **St. John's Metropolitan Community Church**, **Matthew Chapel Holy Church**, **Historic Caraleigh Mills**, **Maywood Ave**, **Walnut Creek Trail**, **Eliza Poole Park**, **Raleigh Water Works & Bath Water Treatment Plant**, **Hallelujah Soup Kitchen**, and **South Wilmington Street Shelter** in the central area.
- Pleasant Ridge Estates**, **St. Barnabas Presbyterian Church**, **Atkins**, **Wheeler Park**, **Carolina Pines Community Center**, **Carolina Pines Park**, **W.B. Nivison**, **Oleander Park**, and **Carolina Pines** in the southwest.
- Vernon Malone College & Career Academy** and **Parkland** in the south.

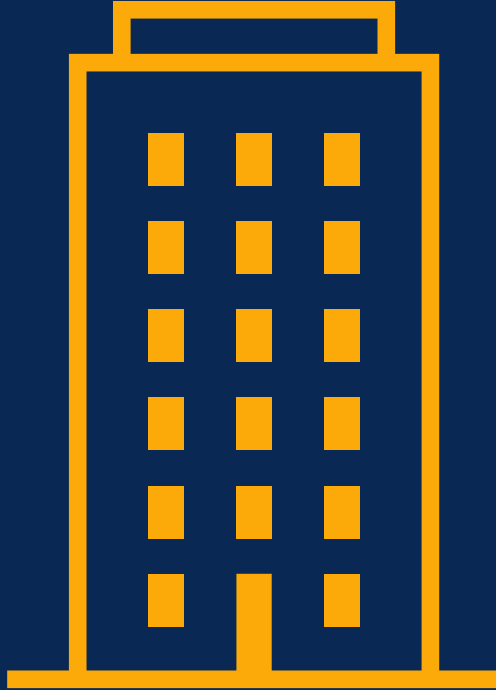
The map also shows major roads like **I-40 EB** and **I-40 WB**, and various trails including **Walnut Creek Trail**, **Rocky Branch Trail**, **Little Rock Trail**, and **Walnut Creek Trail**. A north arrow is located in the bottom left corner.



Project Purpose



Economic
prosperity



Housing
opportunity

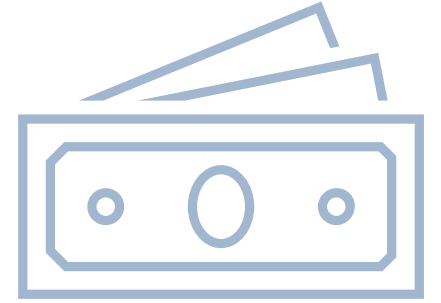
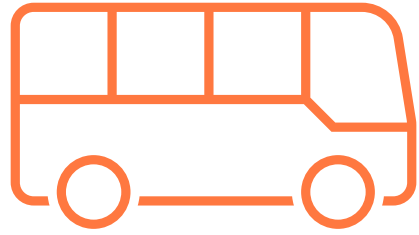
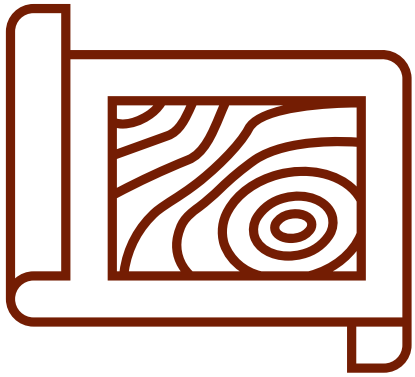


Equity for all
Raleigh residents

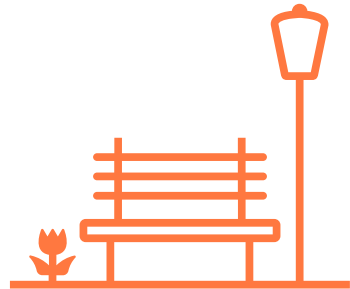
What is the 2030 Comprehensive Plan?

CITY PLANNING

2030
Comprehensive
Plan



2030 Comprehensive Plan



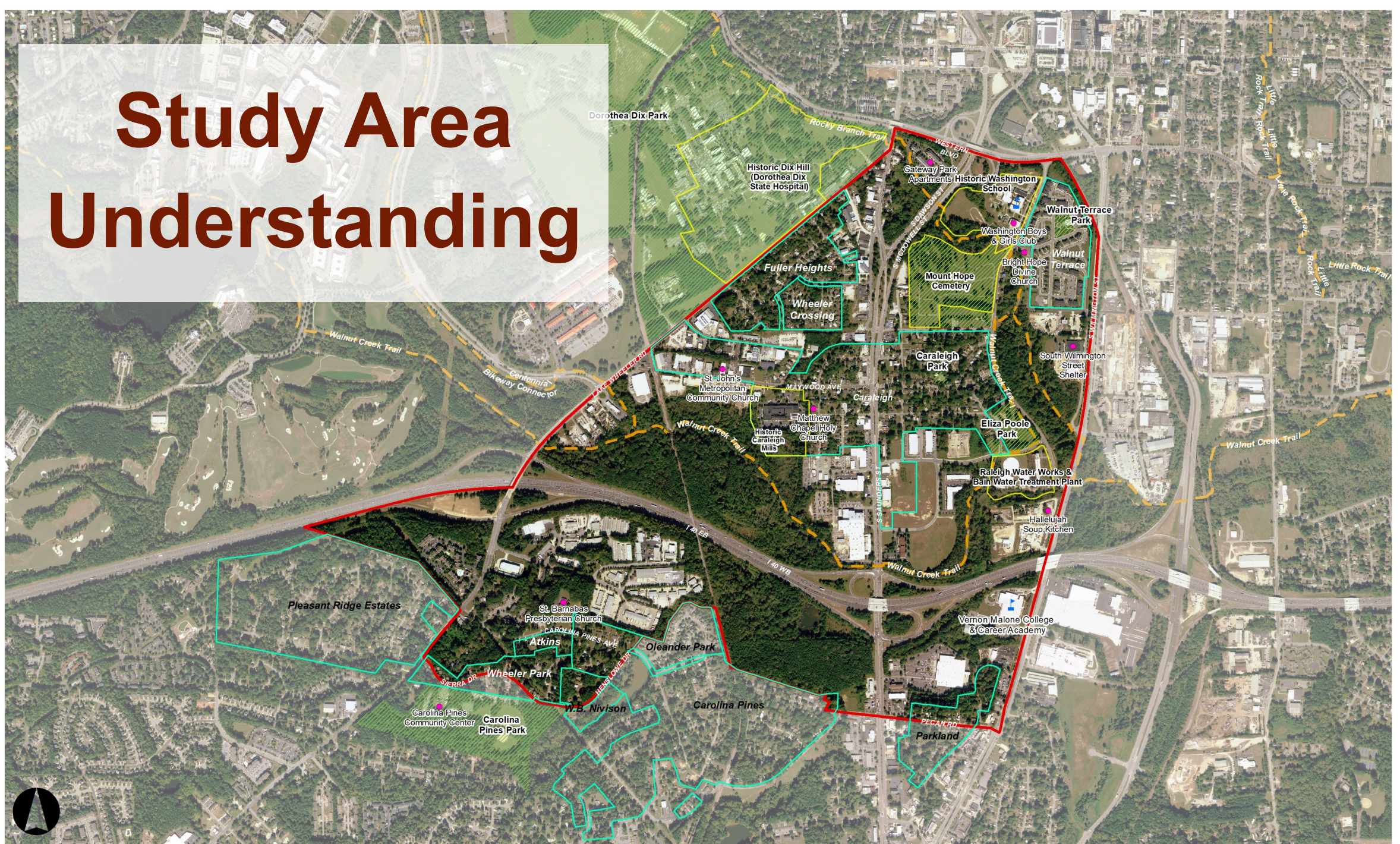
2030 Comprehensive Plan

- 
- Affordable Housing
 - New Sidewalks
 - Bike Lanes
 - Repairing City Streets
 - Other improvements to City Services and Assets

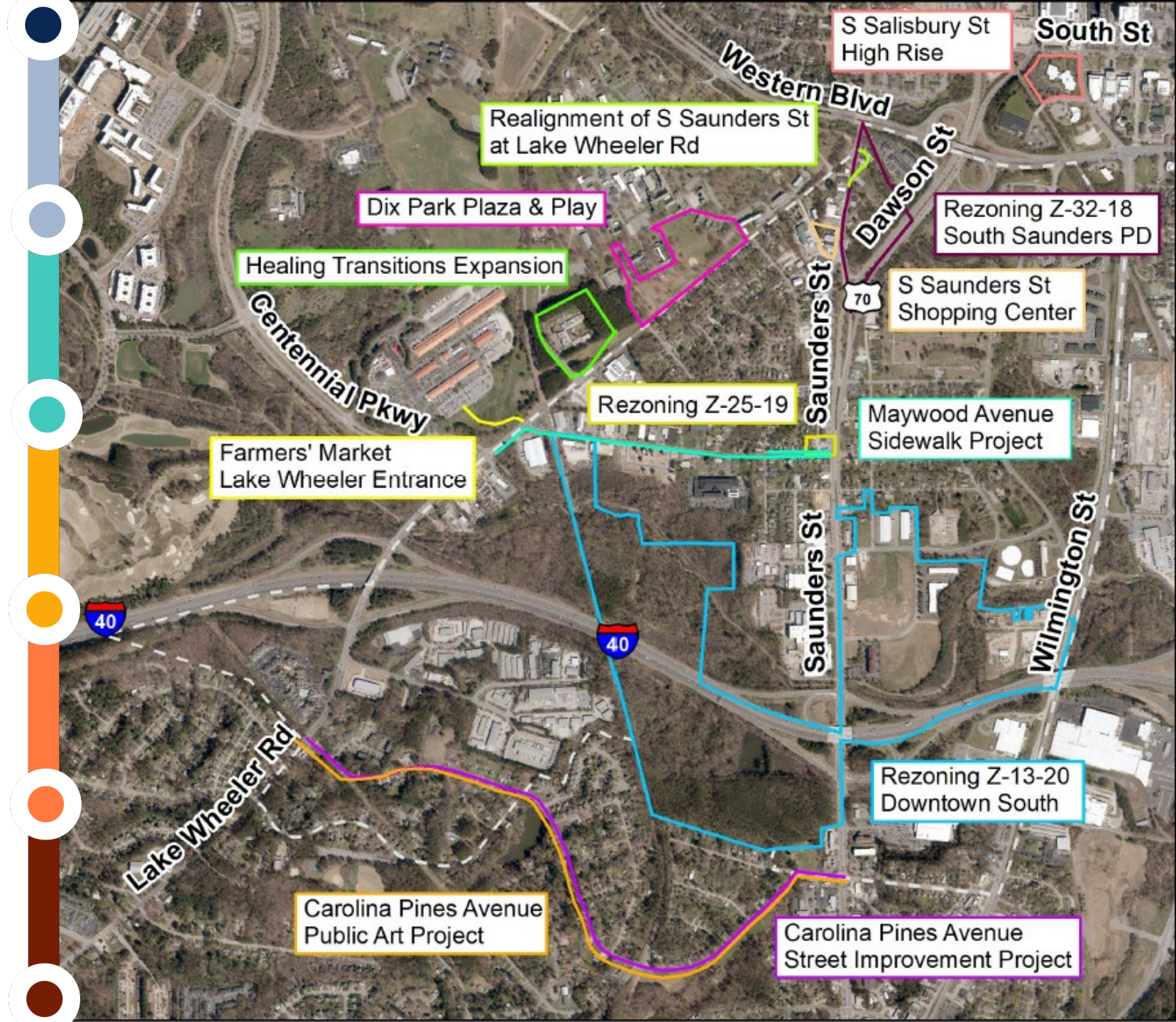


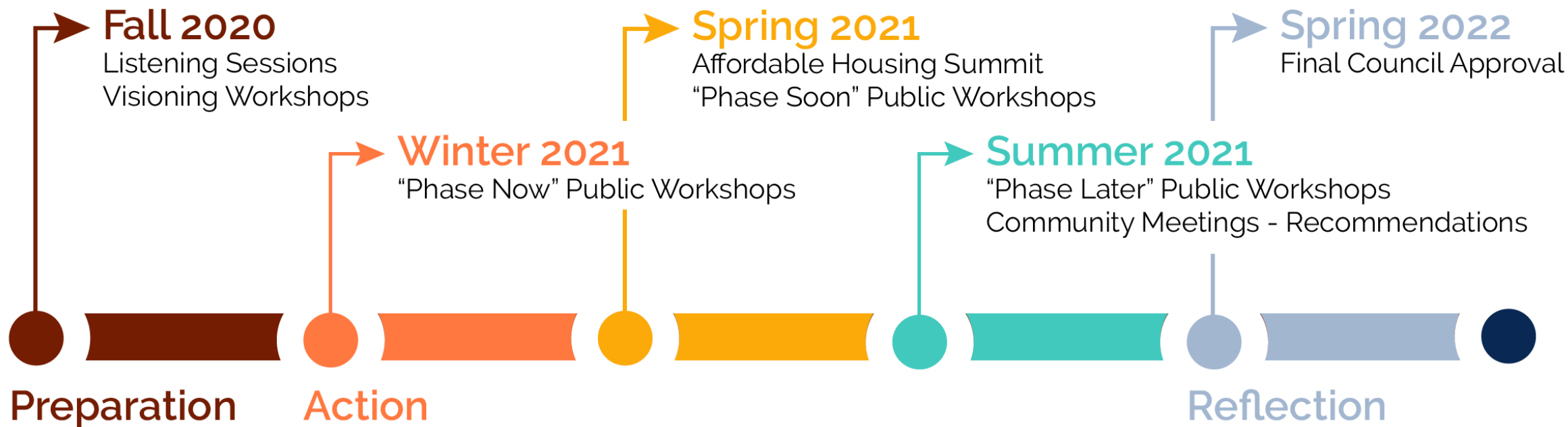
- Anticipate changes in the future
- Assess what the City should do to address that change

Study Area Understanding



Current projects ongoing in the Dix Edge Study Area





Dix Edge Area Study Timeline

Project Outreach



- Neighborhood Ambassadors
- Community Leaders
- Stakeholder Sessions

Project Outreach



- Website
- Monthly Newsletter
- Flyers
- Postcards
- Bus Signs
- Yard Signs
- Emails
- Social Media
- Videos



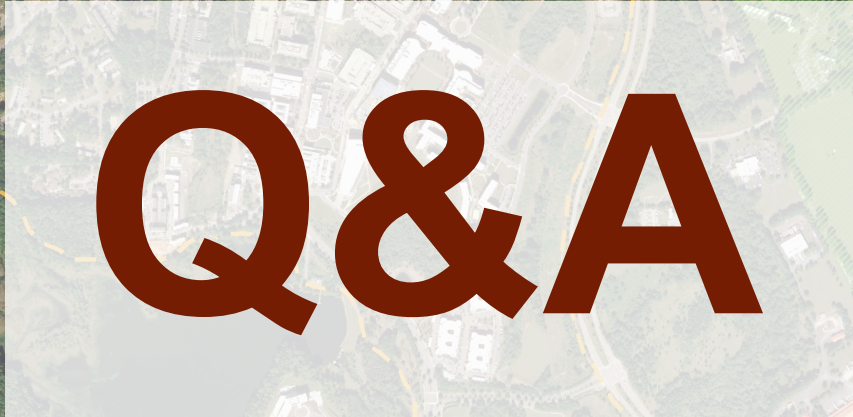
Listening Sessions Feedback

October 2020

Feedback Summary

A decorative horizontal line with six colored segments: dark brown, orange, yellow, teal, light blue, and dark blue. Each segment is flanked by a white circle containing a smaller circle of the same color as the segment.

1. Concerned about the impacts of the development of Dix Park, Downtown South, and other development in the area
2. Concerned about how Downtown South will impact rezoning and housing
3. Need for more affordable housing
4. Pedestrian safety is a concern, including pedestrian access to Downtown
5. Need more sidewalks to Downtown, the Farmer's Market, and other locations



Q&A

Dix Edge



Mount Hope
Cemetery

S. Saunders Street

1-40

Oleander Park

Carolina Pines Park

Carolina Pines

College
emy

Small Group Activity

A decorative horizontal bar spanning the width of the slide. It consists of six colored segments: dark brown, orange, yellow, teal, light blue, and dark blue. Each segment is flanked by a white circle containing a smaller circle of the same color as the segment.

1. **WORRY:** Do you have any worries or concerns about the future of your community or about the Dix Edge project?
2. **KEEP:** What aspects of your community do you want to make sure are kept, preserved, or improved upon in the future?
3. **CHANGE:** What aspects of your community would you like to change? What would that change look like?
4. **PLAN:** When envisioning the future, what are the new amenities or programs you would like to ensure are included in this plan for your community's future?

Final Thoughts?

Dix Edge

Dorothea Dix Park

Historic Dix Hill
(Dorothea Dix
State Hospital)

Lake Wheeler Road

Rocky Branch Trail

Mount Hope
Cemetery

Historic
Washington
School

Historic
Caraleigh
Mills

E.B. Bain Water
Treatment
Plant

Walnut Creek Trail

I-40

Pleasant Ridge Estates

Oleander Park

Carolina Pines
Community Center

Carolina
Pines Park

W.B. Nivison

Carolina Pines

Parkland

Walnut Creek Trail

Little
Rock Trail

Little
Rock Trail

Little
Rock Trail

Little
Rock Trail



Next Steps

- Existing Conditions Analysis
- Vision Development
- Project Identity & Neighborhood Story
- Public Workshops (starting Feb/Mar 2021)



For more information about participating in future events, visit:

raleighnc.gov/dix-edge

Contact Info

Sara Ellis

City Project Manager

Sara.Ellis@raleighnc.gov

(919) 996-2234



raleighnc.gov/dix-edge