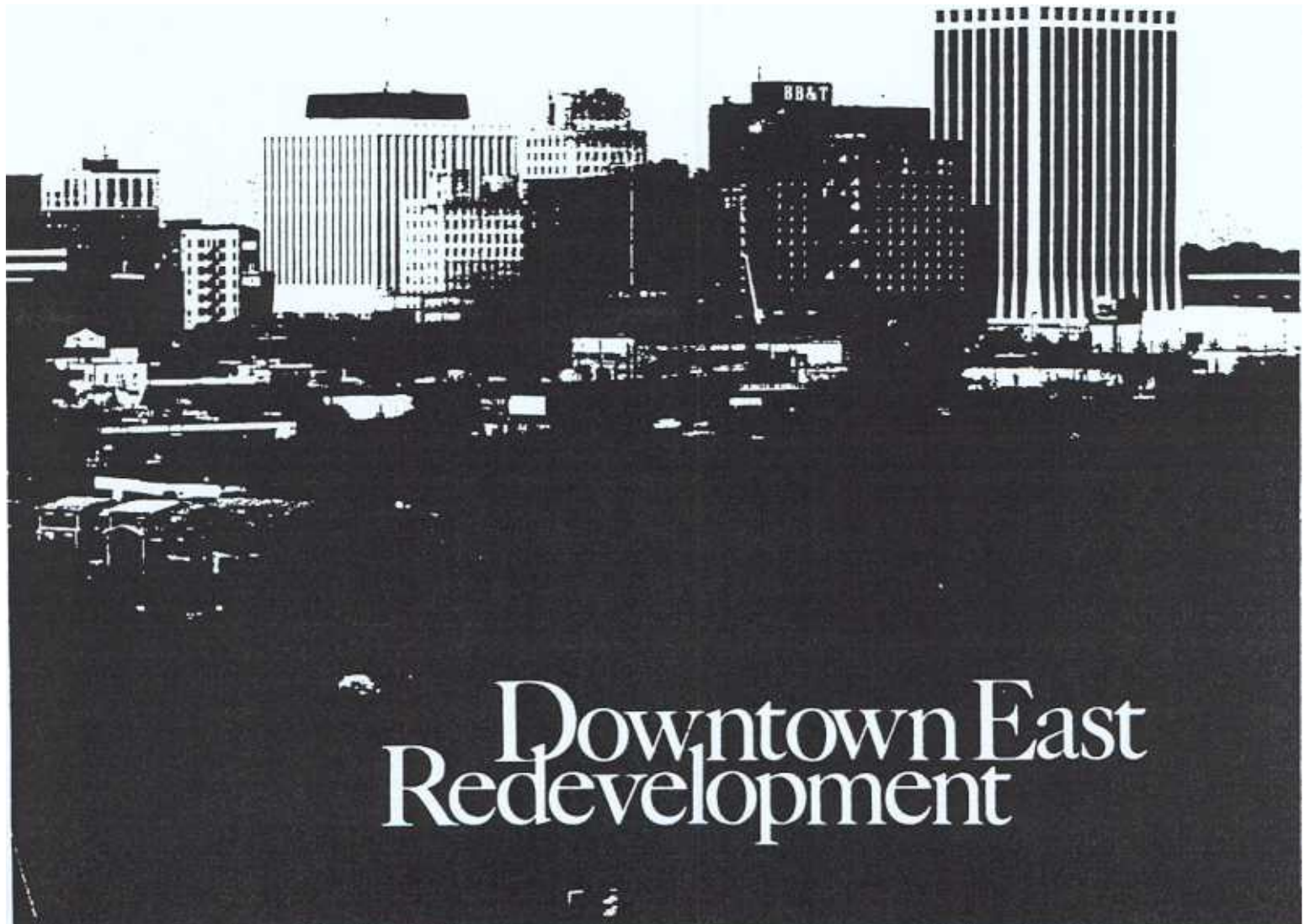


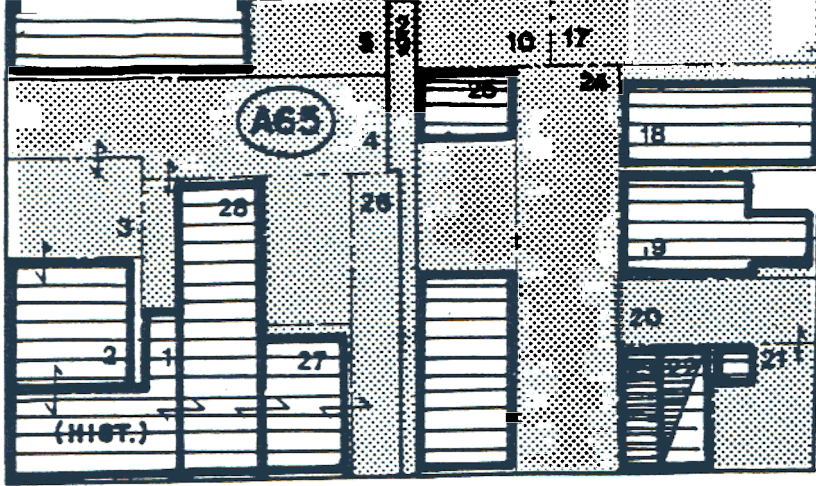
Raleigh Downtown

MONTAGUE BUILDING REHABILITATION PLAN

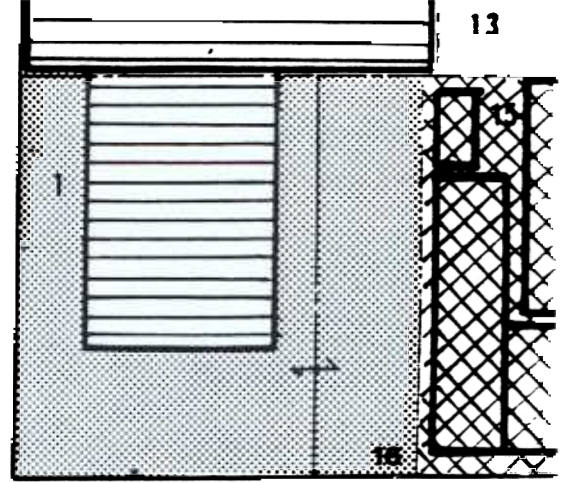
Adoption Date: Dec 3, '85



Downtown East
Redevelopment

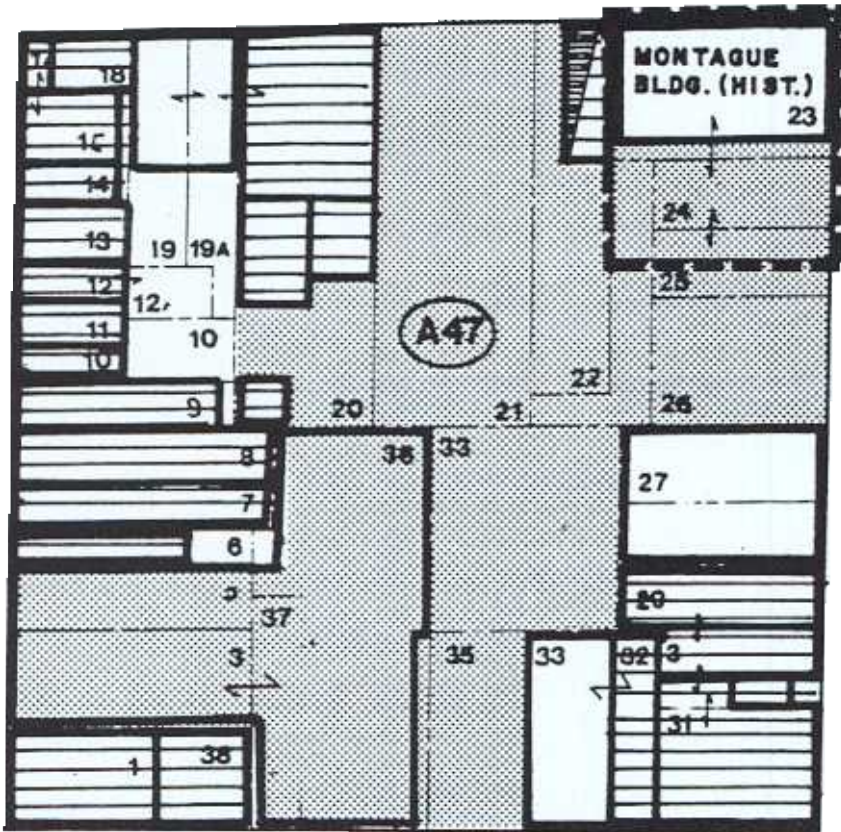


100 HARGETT

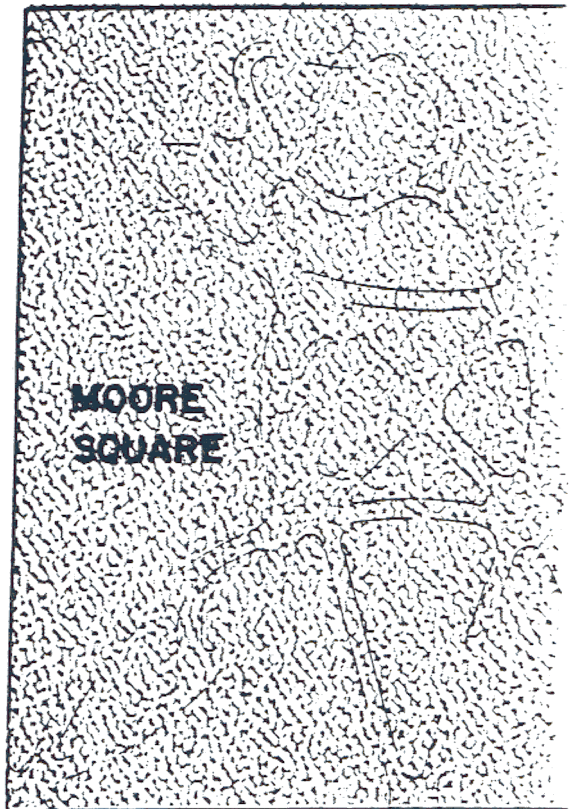


200 STREET

STREET 200



STREET

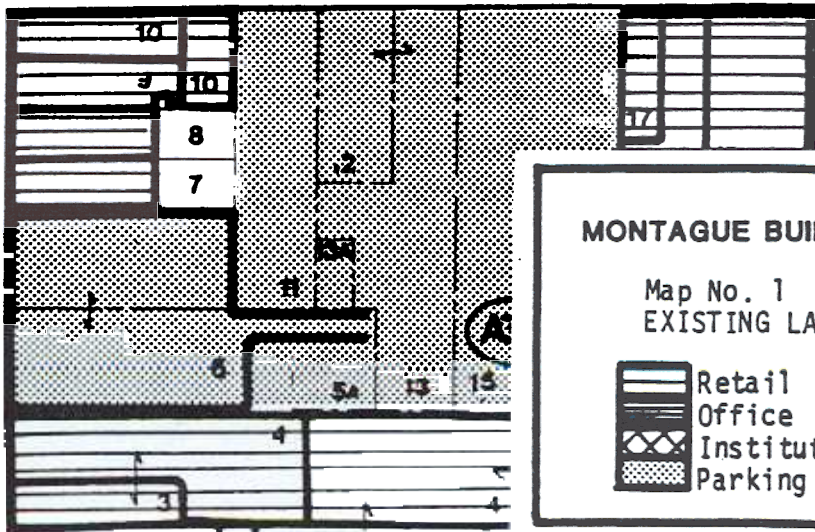


MOORE SQUARE

MARTIN

STREET

300

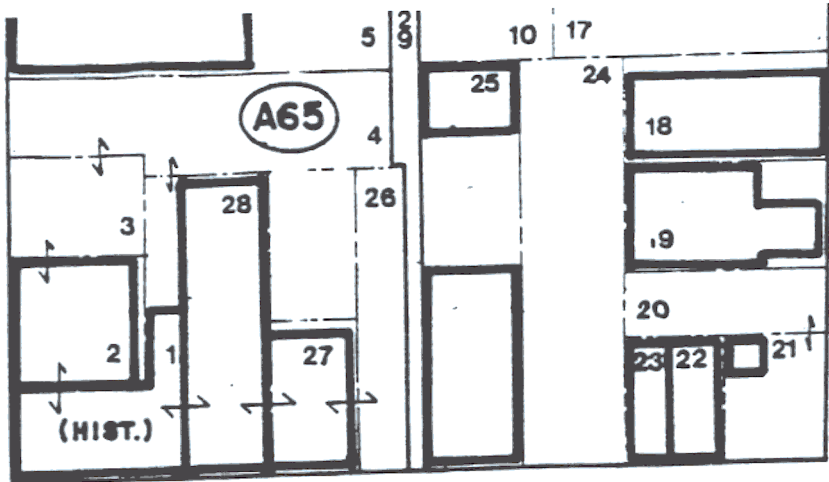


LM

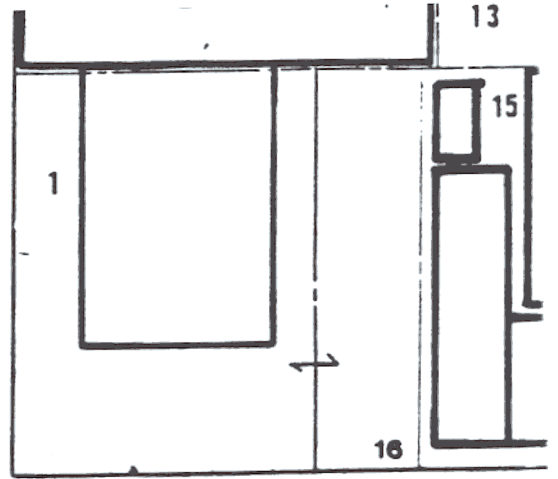
MONTAGUE BUILDING REHABILITATION PLAN

Map No. 1
EXISTING LAND USES AND PROJECT BOUNDARY

	Retail		Open Space
	Office		Vacant Space
	Institutional		Project Area Boundary
	Parking		

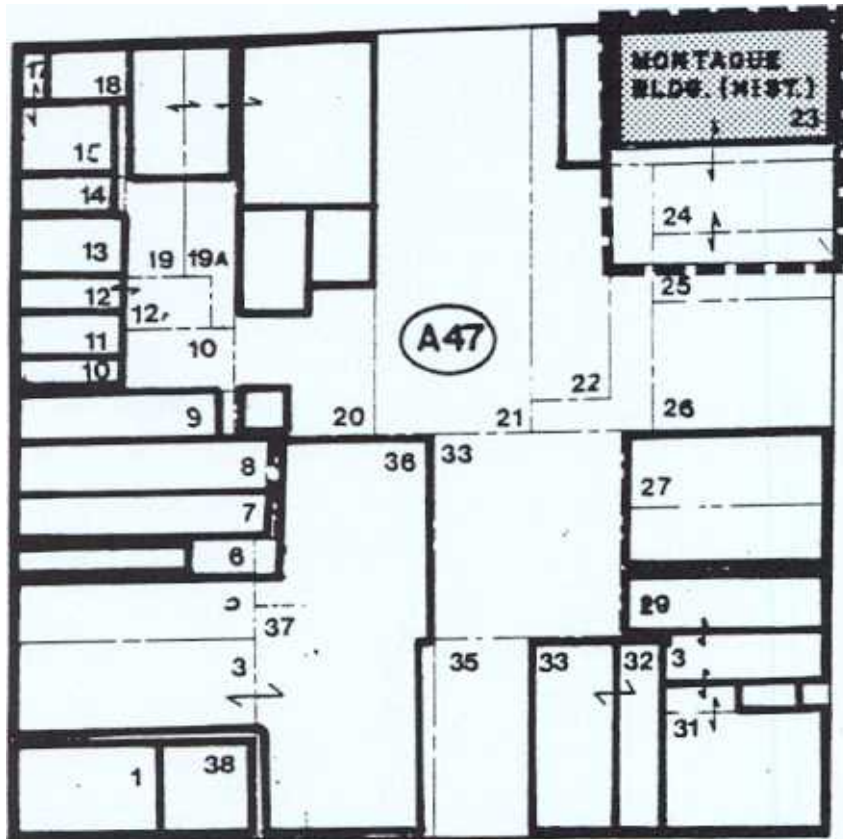


100 HARGETT

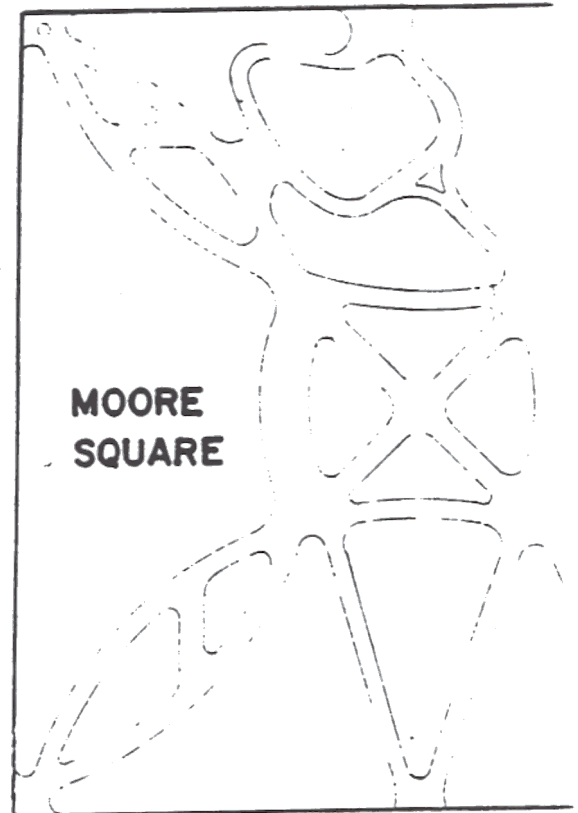


200 STREET

STREET 200



STREET

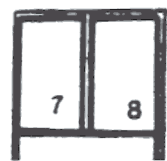
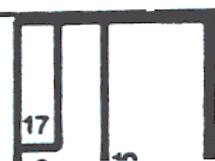
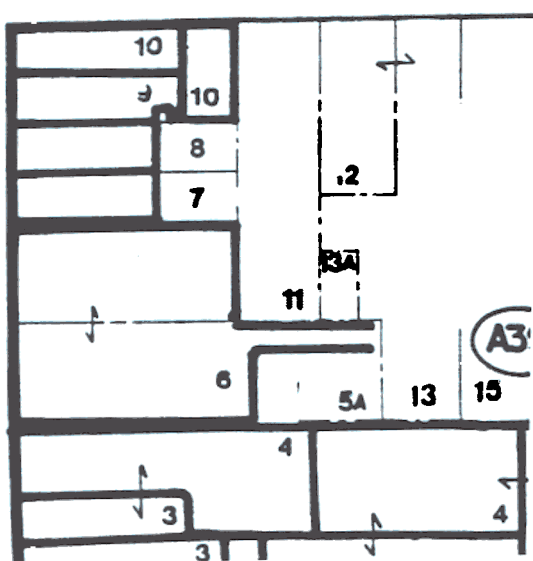


MOORE SQUARE

MARTIN

STREET

300

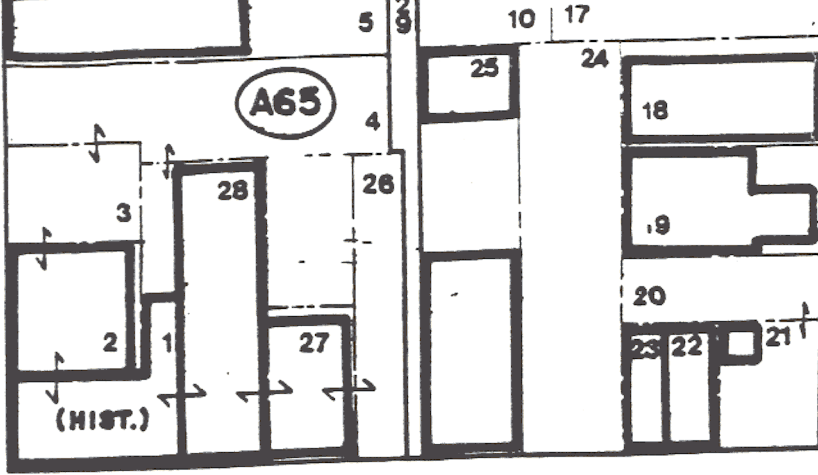


ST.

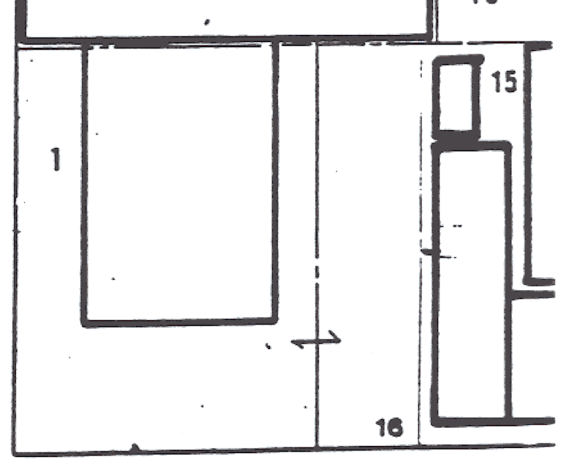


MONTAGUE BUILDING REHABILITATION PLAN

Map No. 2
 LAND USE PLAN
 Office-Retail Mixed Use Development

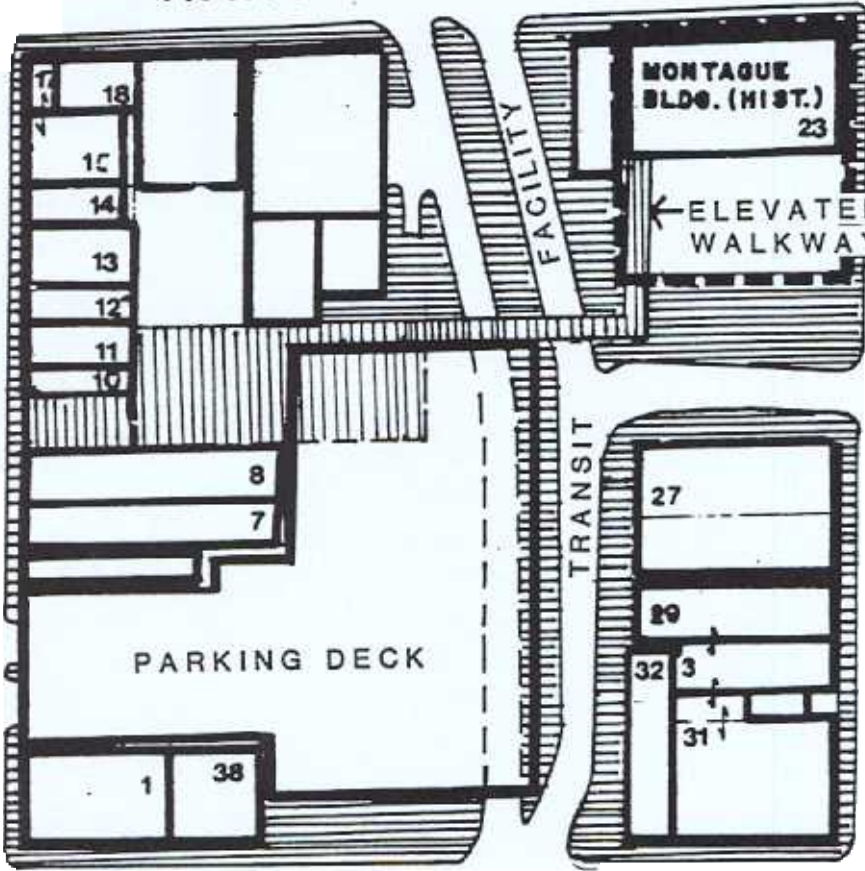


100 HARGETT



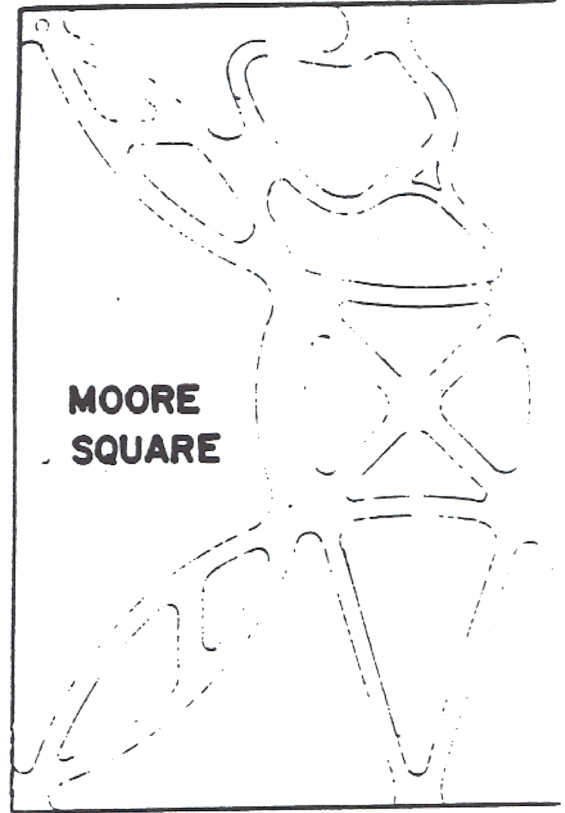
200 STREET

STREET 200



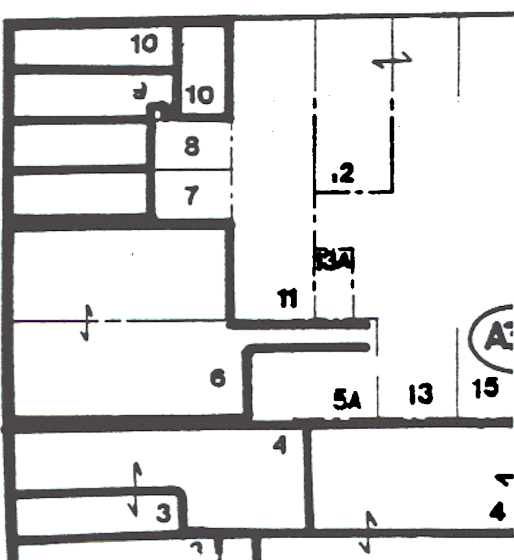
MARTIN

STREET



STREET

WILMINGTON 300



MONTAGUE BUILDING REHABILITATION PLAN

Map No. 3
PRELIMINARY SITE PLAN

