



Southeast Special Area Study

Community Meeting #1
Barwell Community Center
June 8, 2019



Raleigh





Raleigh

Today's Agenda

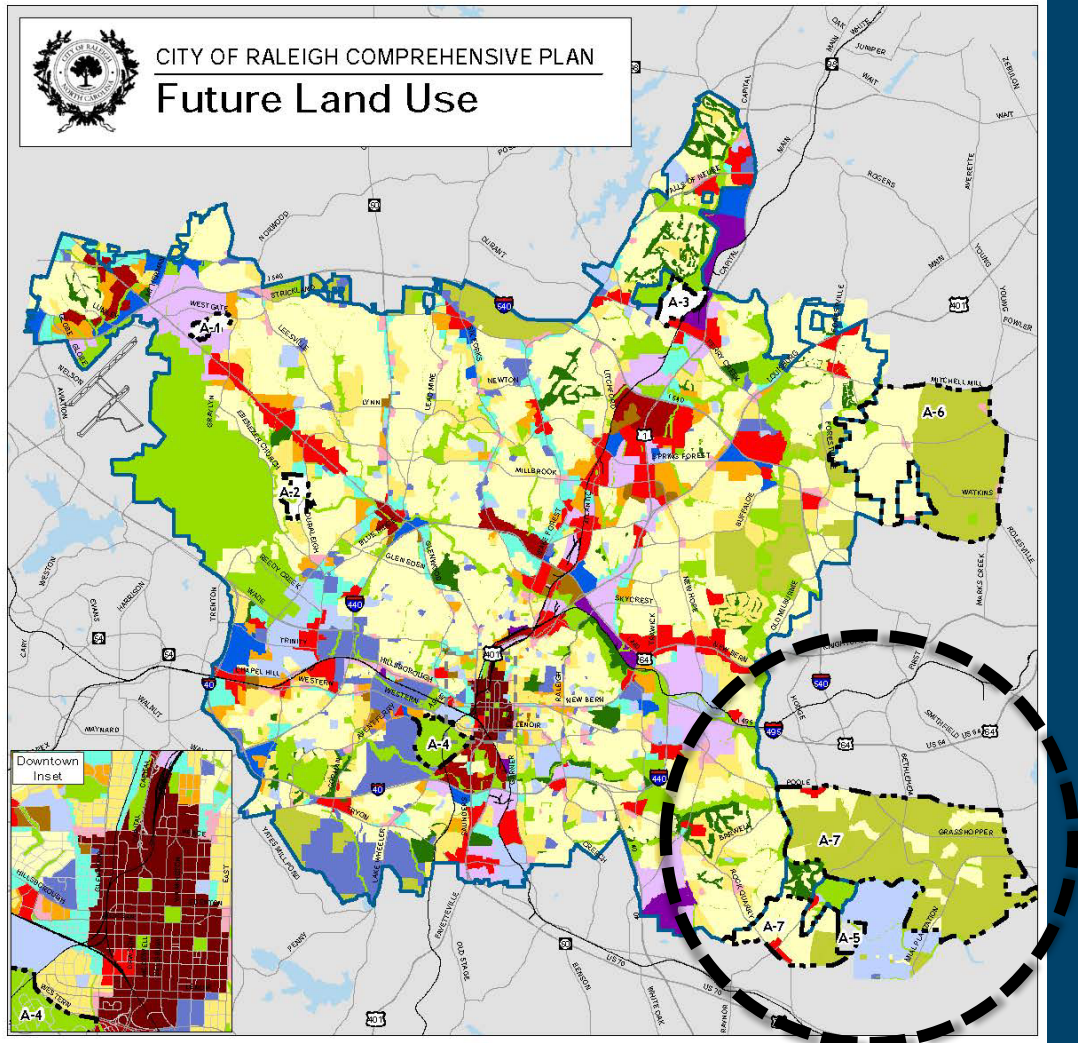
- I. Brief Presentation
- II. Planning Process
- III. Group Activity
- IV. Adjourn

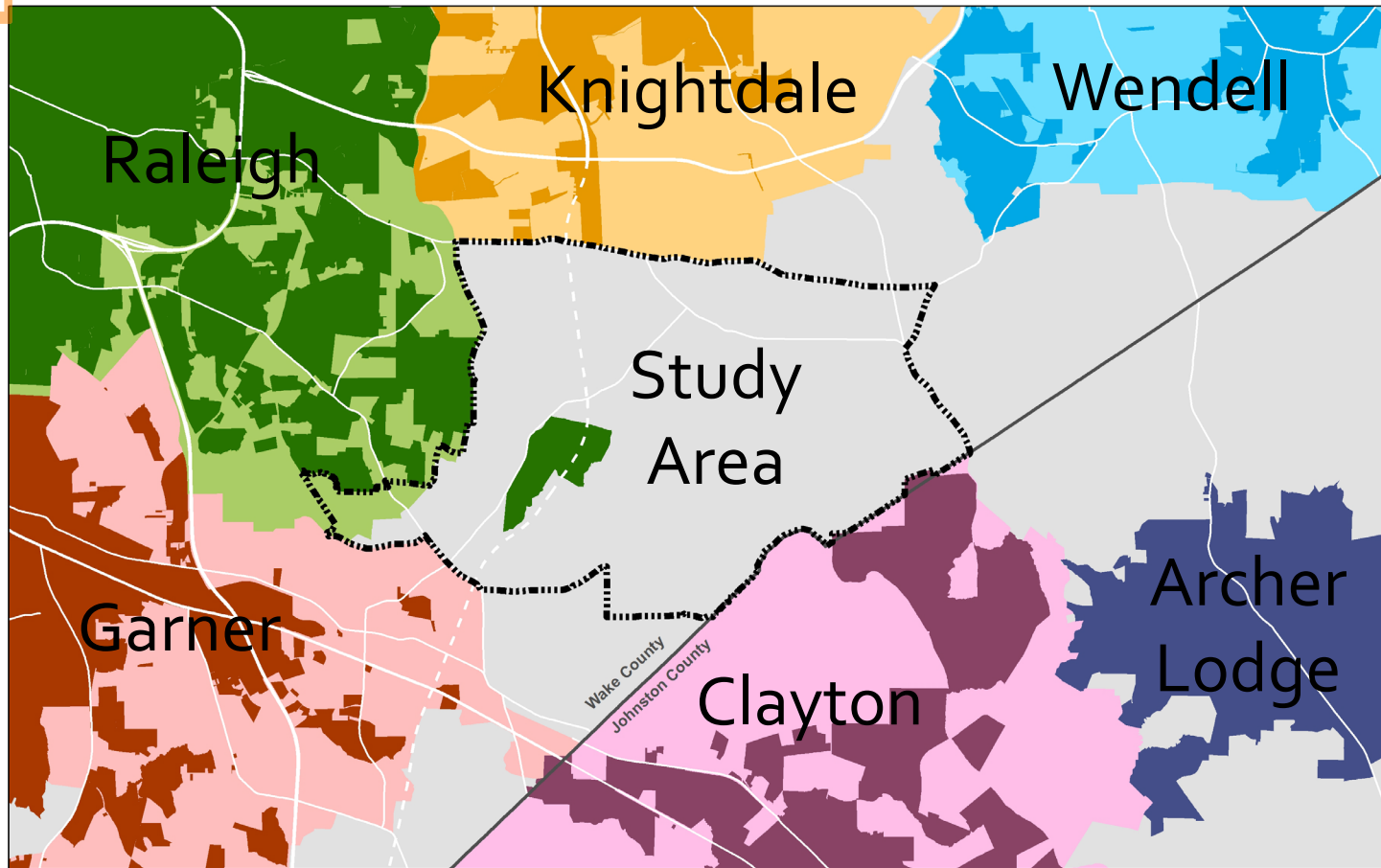




CITY OF RALEIGH COMPREHENSIVE PLAN

Future Land Use





Southeast Special
Area Study



0 0.5 1 2 3 4 Miles



Corporate Limits and Planning Jurisdictions

Corporate Limits	Planning Jurisdictions
Clayton	Clayton
Garner	Garner
Knightdale	Knightdale
Raleigh	Raleigh
Wendell	Wendell
Archer Lodge	
	Study Area Boundary



Raleigh

Where Are We In the Study Process?

We Are Just Getting Started!

Planning Process

- | | |
|------------------------------|----------------|
| 1. Understanding the Area | Summer 2019 |
| 2. Community Ideas & Options | Late Fall 2019 |
| 3. Recommendations | Spring 2020 |
| 4. Review & Adoption | Summer 2020 |



Raleigh

Why Do A Study?

Rural Area Experiencing Changing Conditions

- Predominantly rural area
- Significant farm and forestland
- Important preservation and conservation areas
- Consistent demand for residential development
- Planned infrastructure projects –
water/sewer/roads



Raleigh

The SE Area is Predominantly Rural





Farming & Forestry Remain Viable



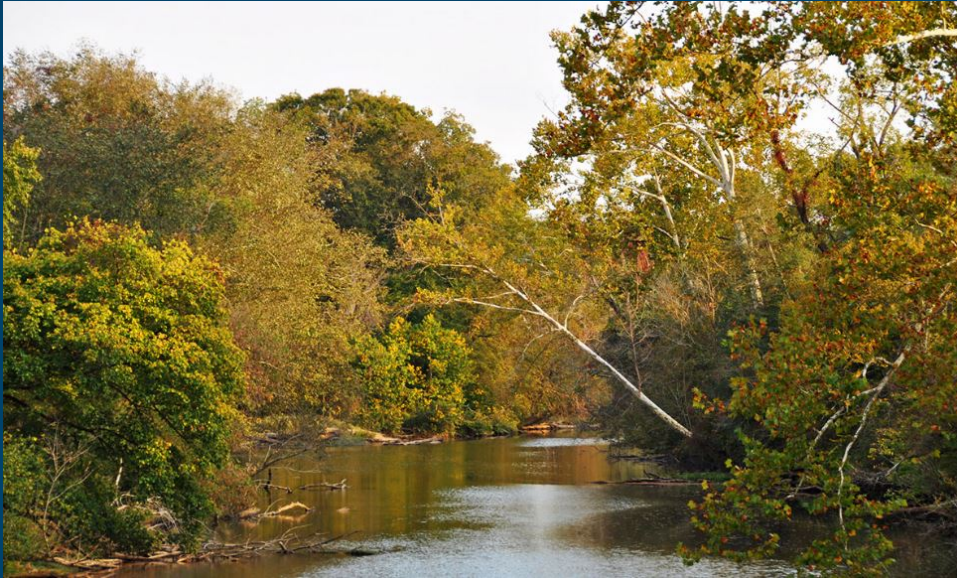


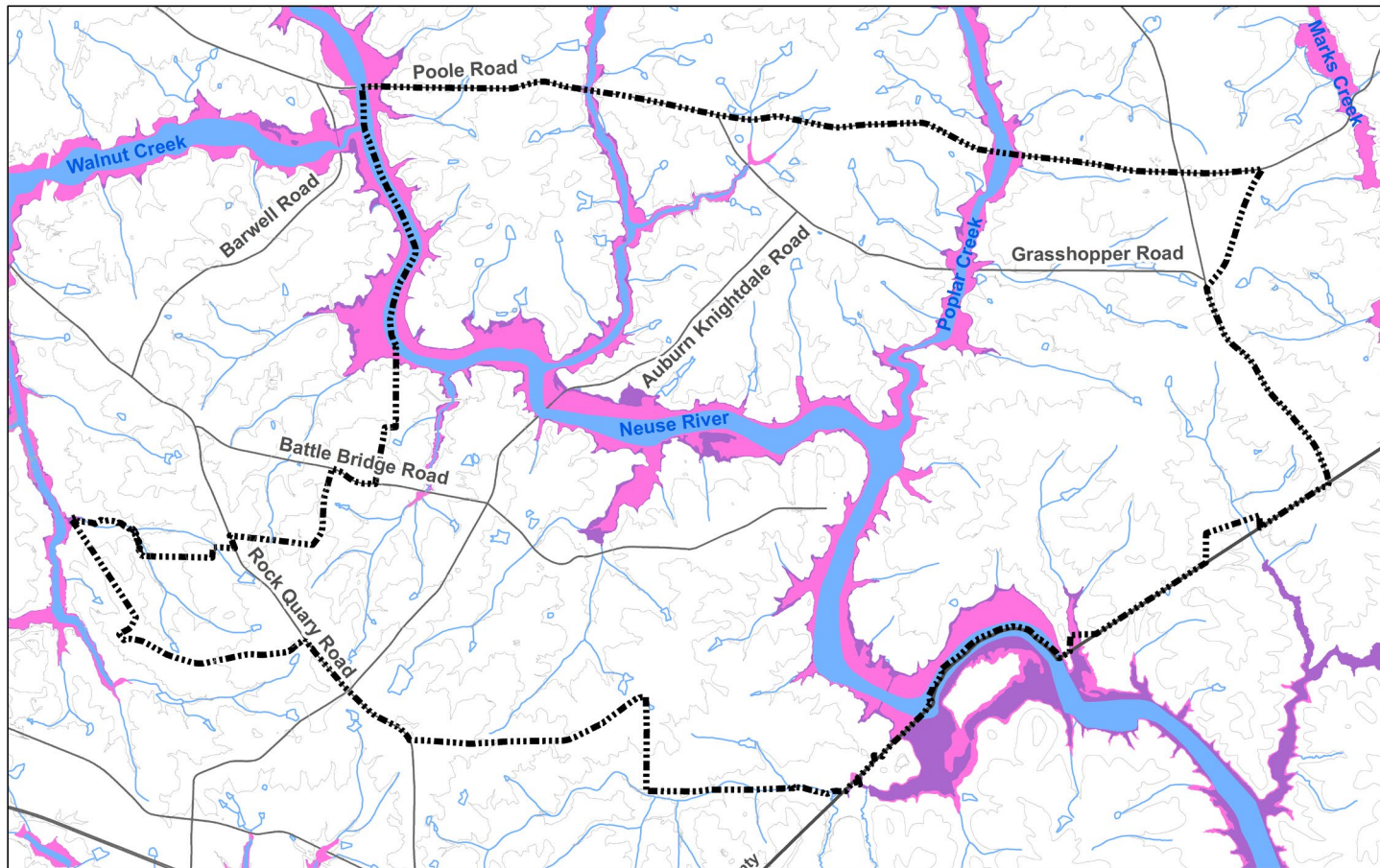
Important Preservation and Conservation Areas





Important Preservation and Conservation Areas



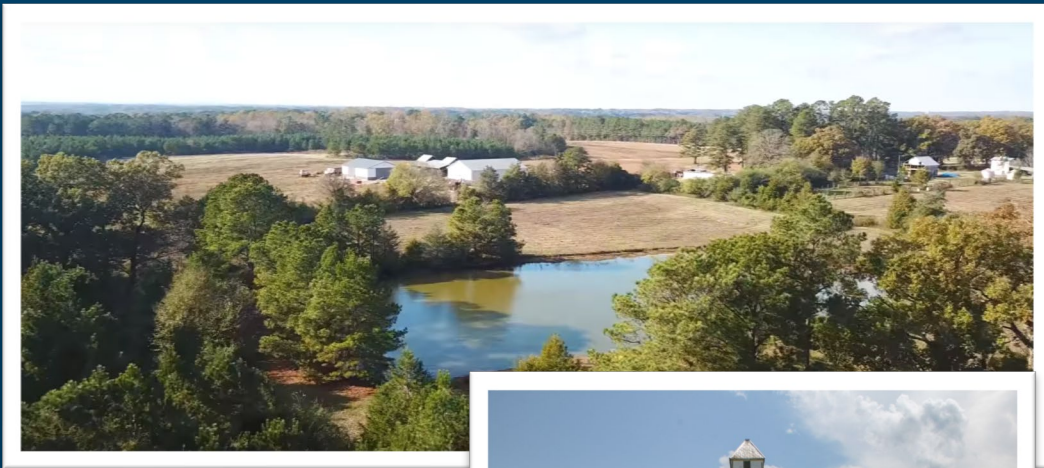


**Southeast Special
Area Study**

Floodplain & Topography

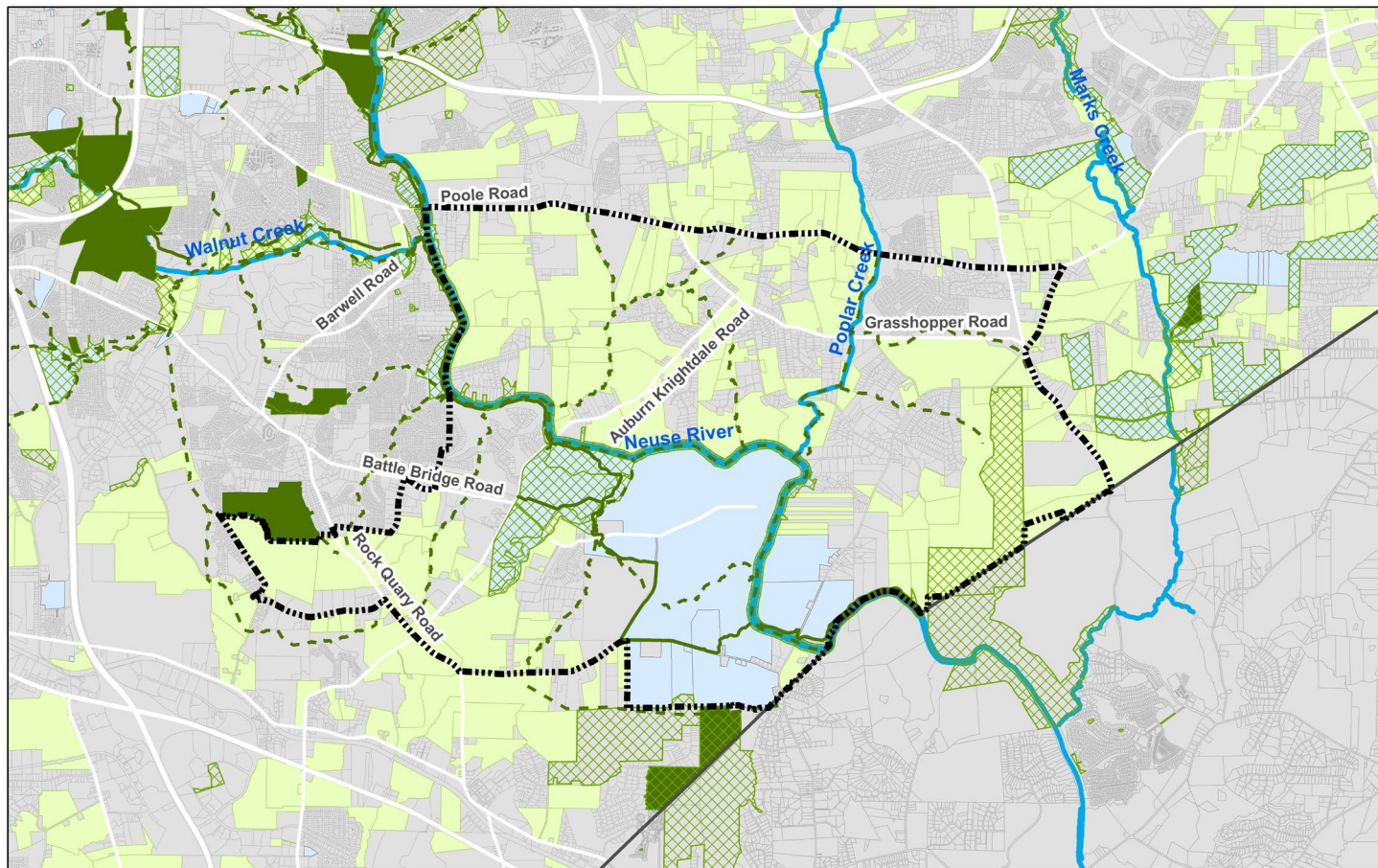


Important Preservation and Conservation Areas





Raleigh



**Southeast Special
Study Area**

Important Preservation & Conservation Areas



Raleigh

Steady Market Demand and Trending Growth





Steady Market Demand and Trending Growth





Raleigh

Planned Infrastructure Projects



Neuse River Resource Recovery Facility (NRRRF)



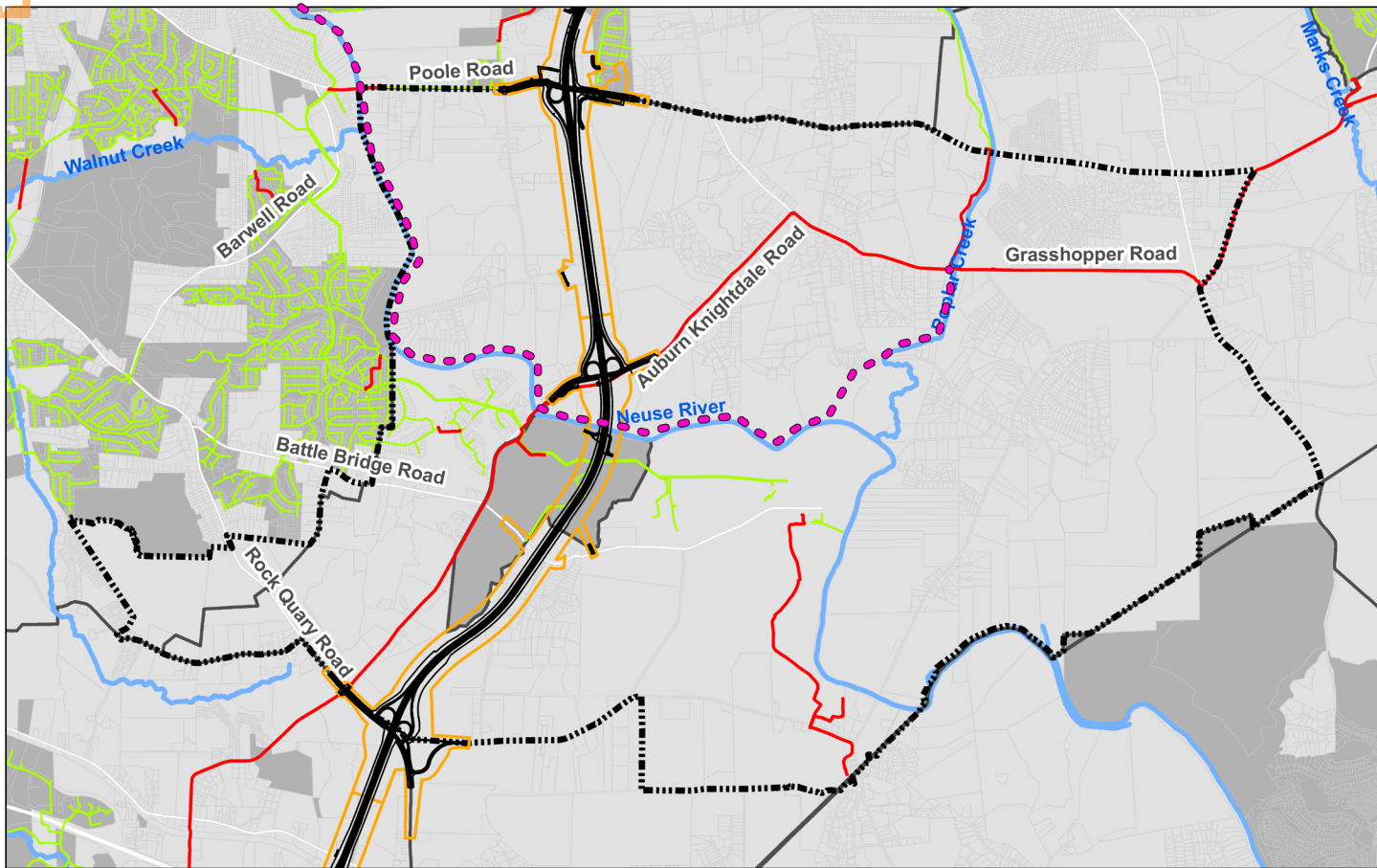
Raleigh

Planned Infrastructure Projects





Raleigh Public Utilities

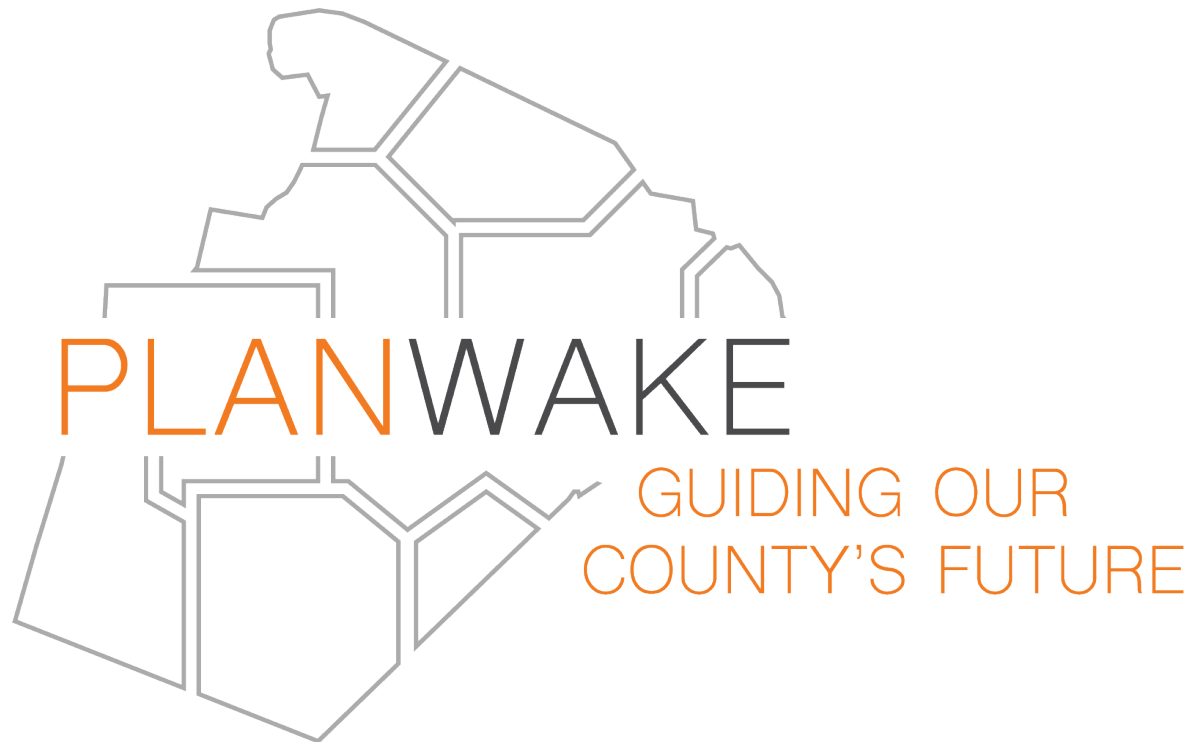


**Southeast Special
Area Study**



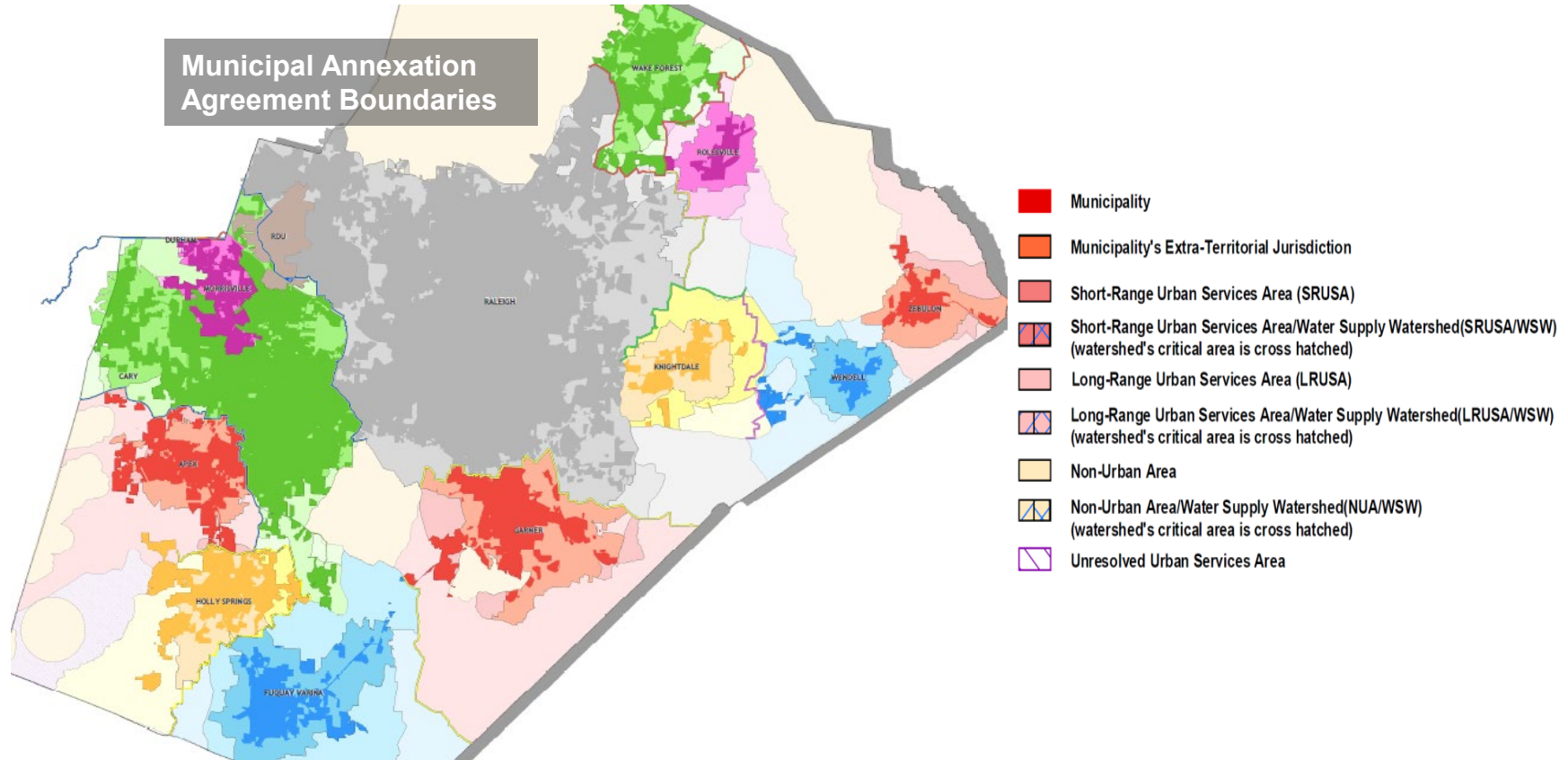


Realign



Next 10 Years – Next 250,000 Residents

Wake County Has a History of Working with Municipalities to Plan for Change



“PLANWake” Will Be the New Wake County Policy Guide

Guiding and Focusing Our Growth

- Annexation, Extra Territorial Jurisdiction (ETJ), and Urban Service Areas
- Land use, development and design
- Fiscal aspects of growth

Fostering Our Prosperity

- Economic and business development (focus on equity)
- Housing and lifestyle affordability (focus on workforce housing)
- Community diversity

Connecting Our People to Places

- Transportation mobility and safety (multimodal)
- Parking and access
- Greenways and trails

Sustaining Our Built Environment

- Utilities, wells, wastewater, and stormwater
- Solid waste
- Resiliency and planning for the impact of weather events

Serving Our Community

- Schools and education
- Parks, recreation, and open space
- Emergency services
- Community health (Health and Human Services)

Protecting Our Resources

- Historic preservation
- Farmland and food systems
- Air and water quality / conservation
- Wildlife and habitat protection and preservation

Resident Responses to Critical Community Questions Will Be the Foundation for PLANWake

INSIGHT





Learn More:

www.PlanWake.org



Participate in PLANWake Survey #2 about policy choices



Read short reports about growth trends and what Wake County residents are concerned about



Sign up to receive email updates



NEXT STEPS

Planning Process

- | | |
|------------------------------|----------------|
| 1. Understanding the Area | Summer 2019 |
| 2. Community Ideas & Options | Late Fall 2019 |
| 3. Recommendations | Spring 2020 |
| 4. Review & Adoption | Summer 2020 |



Your Voice Can Help Shape the Future of the SE Area

Please tell us...

- You know this area best!
- What works?
- What doesn't?





Raleigh

Today's Activity:

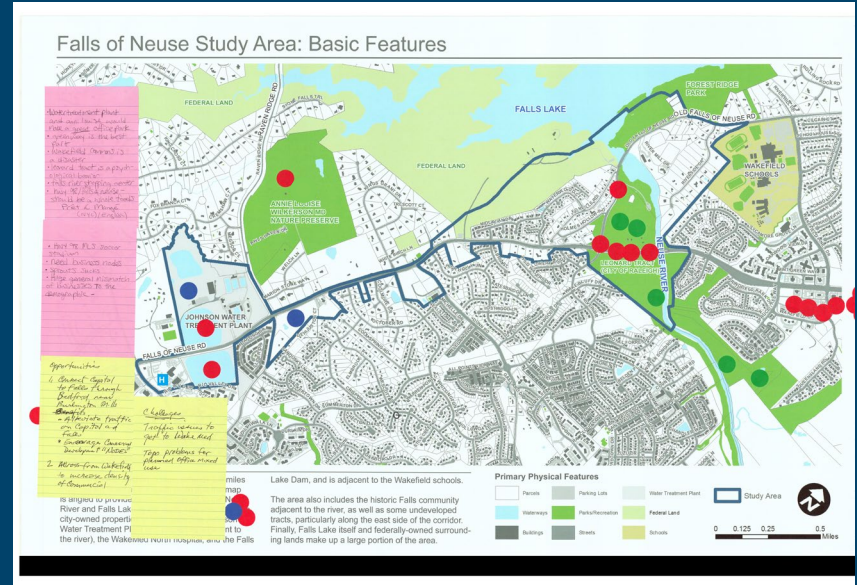
1. What do you like about the SE Study Area? What would you like to see preserved? (10 minutes)
2. What do you not like about this area? What needs attention or could work better? (10 minutes)
3. What are your top priorities? (10 minutes)
4. What is your vision for the SE Area in 2050? (5 minutes)
5. Tell us (10 minutes)



Raleigh

What Do You Like About the SE Area? What Would You Like to See Preserved?

- Place green dots on the map on places you like. Write or sticky note what it is you like about that place
- If it's something that applies across the area, write it on the chart
- Discuss with your table, but you don't have to agree before you put a dot down
- We have lots of dots.



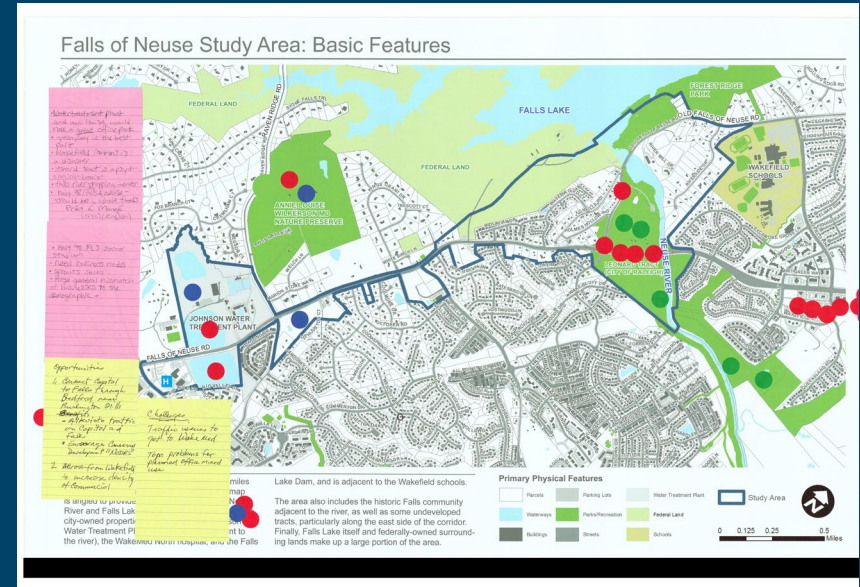
- It should look basically like this



Raleigh

What Do You Not Like About the SE Area? What Needs Attention or Could Work Better ?

- Place **red** dots on places that need help. Write or sticky note what the issue is specifically
- If it's something that applies across the area, write it on the chart
- Discuss with your table, but you don't have to agree before you put a dot down



- It should look basically like this



What Are Your Top Priorities?

- Place dots (any color) beside your top three priorities
- If something isn't listed, please write it in!

Southeast Special Area Study



What Topics or Issues are Most Important to You? Put dots beside your top 3.

Natural Resources (recreation) ●●●

Natural Resources (environment & stormwater) ●●●

Getting around by car ●●●

Getting around by other modes (transit, bicycling, walking) ●●●

Proximity to commercial centers ●●● ●●●

New development (density, urban form, transitions between uses) ●●●

Housing (availability, types, affordability) ●●●

Other (please write on a sticky-note and place here)





What is your hope for the future of the Southeast Study Area?

- Just complete the sentence: *"In 2050, I hope the Southeast Area..."*
- Write it on the chart or write on a sticky and post on the chart



Raleigh

Share your Work! (1 min. per group)

- Pick someone to summarize the key points your group discussed
- What did people generally like or dislike?
- What are their hopes for the future?





Raleigh

How Can I Stay Involved?

Other Resources

Visit www.RaleighNC.gov,
search for Southeast Study

Staff Contact:

Donald Belk, AICP

Donald.Belk@raleighnc.gov or 919-996-4641

Southeast Special Area Study

Community Meeting #1
Barwell Community Center
June 8, 2019



Thank You!

