

Southeast Special Area Study

Meeting with Landowners
Neuse River Resource Recovery
Facility
August 29, 2019



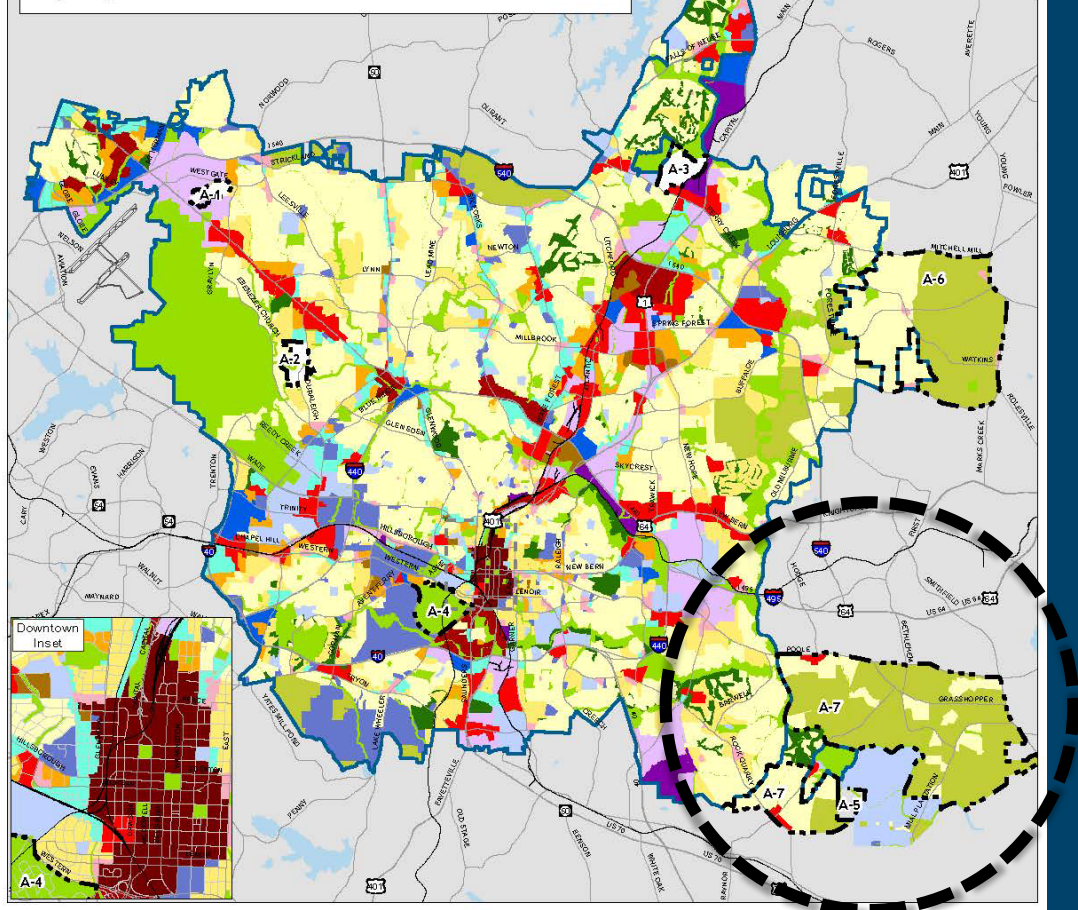


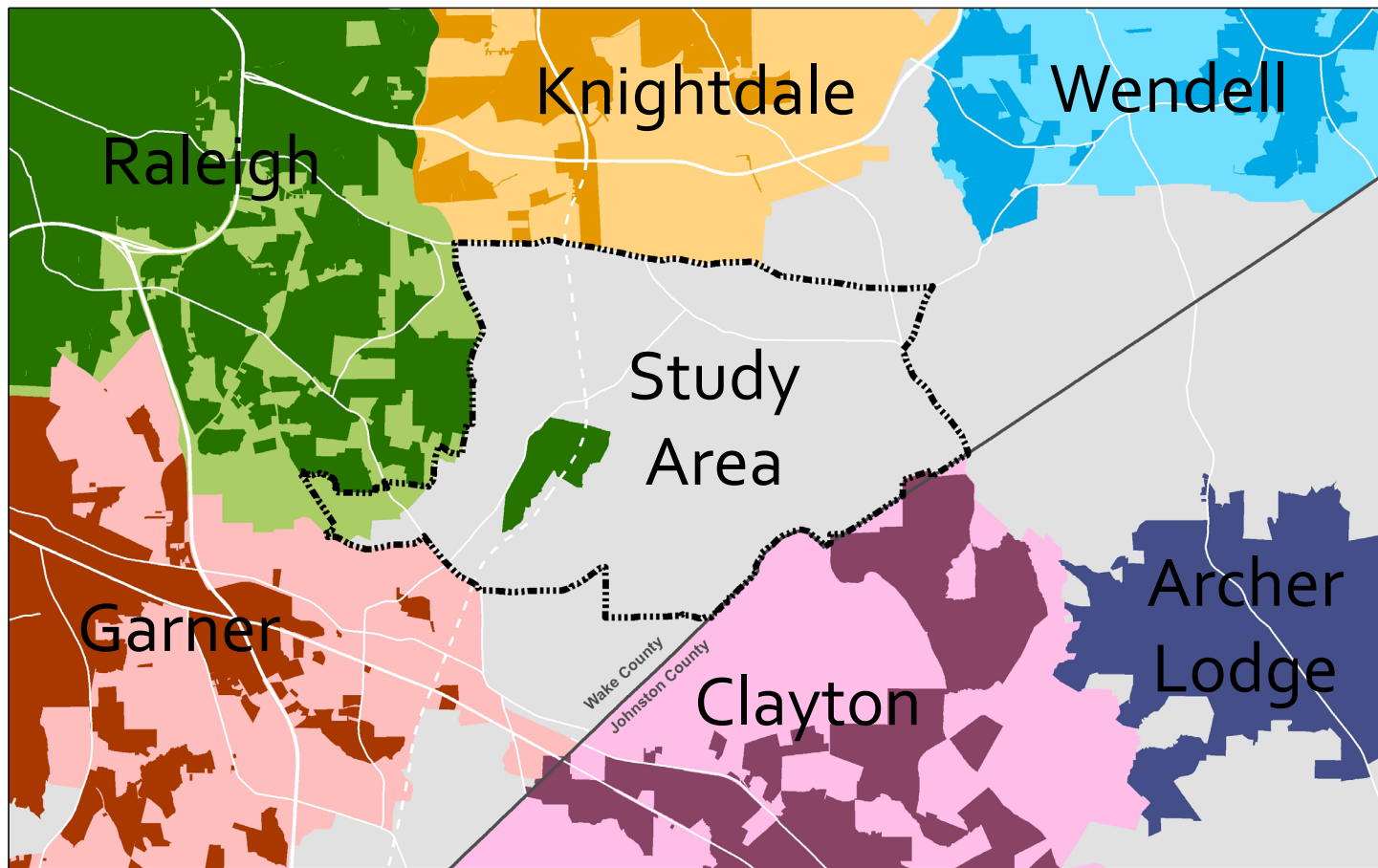
Raleigh

Today's Agenda

- I. Introductions
- II. Brief Presentation
- III. Q&A; Discussion
- IV. Adjourn







Corporate Limits and Planning Jurisdictions

Corporate Limits	Planning Jurisdictions
Clayton	Clayton
Garner	Garner
Knightdale	Knightdale
Raleigh	Raleigh
Wendell	Wendell
Archer Lodge	Study Area Boundary



Raleigh

Where Are We In the Study Process?

We Are Just Getting Started!

Planning Process

- | | |
|------------------------------|-------------|
| 1. Understanding the Area | Summer 2019 |
| 2. Community Ideas & Options | Winter 2020 |
| 3. Recommendations | Spring 2020 |
| 4. Review & Adoption | Summer 2020 |



Raleigh

Why Do A Study?

Rural Area Experiencing Changing Conditions

- Predominantly rural area
- Significant farm and forestland
- Important preservation and conservation areas
- Consistent demand for residential development
- Planned infrastructure projects –
water/sewer/roads



Raleigh

The SE Area is Predominantly Rural





Farming & Forestry Remain Viable





Important Preservation and Conservation Areas



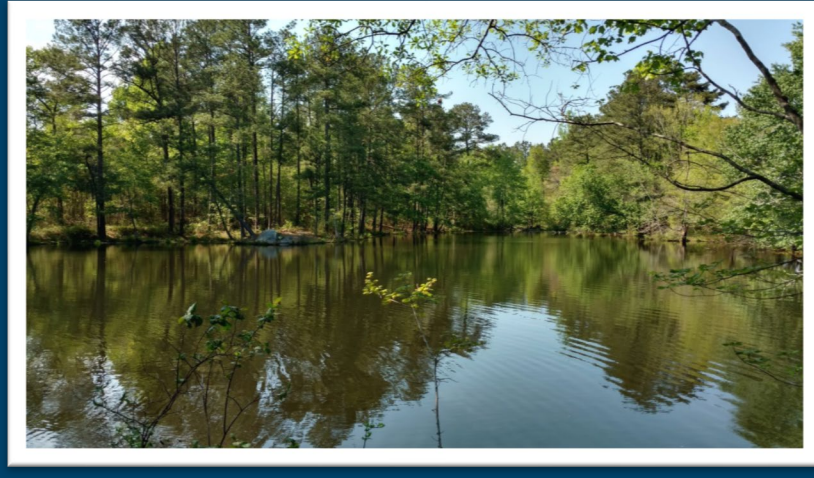


Important Preservation and Conservation Areas



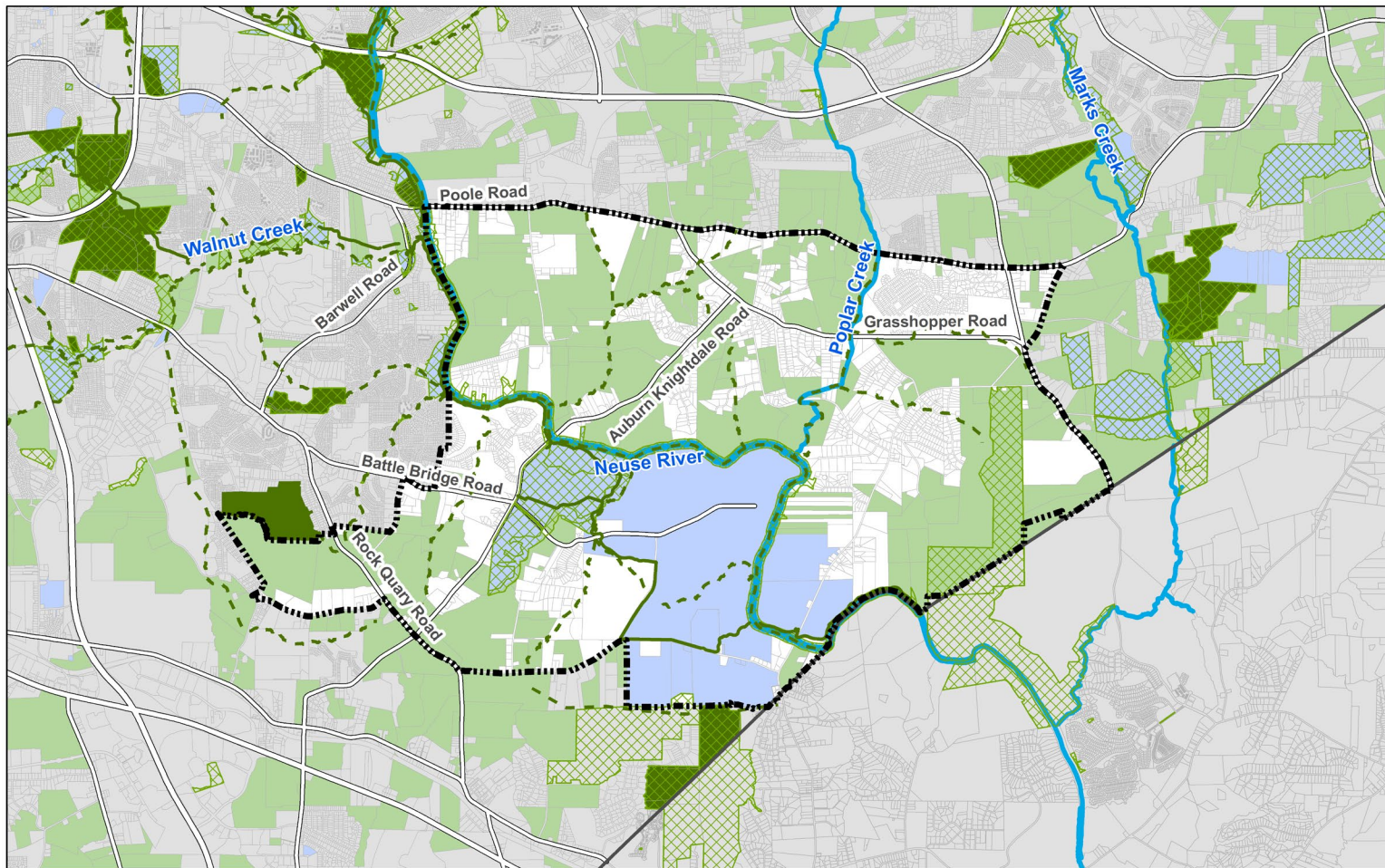


Important Preservation and Conservation Areas





Raleigh



Southeast Special Study Area

— Raleigh Greenway Trails

- - - Potential Greenway Corridors

■ Parks

■ Forestry & Agriculture

■ Publicly Owned Lands

--- Study Area Boundary

Important Preservation & Conservation Areas



Steady Market Demand and Trending Growth





Steady Market Demand and Trending Growth



Neuse River Resource Recovery Facility





Raleigh

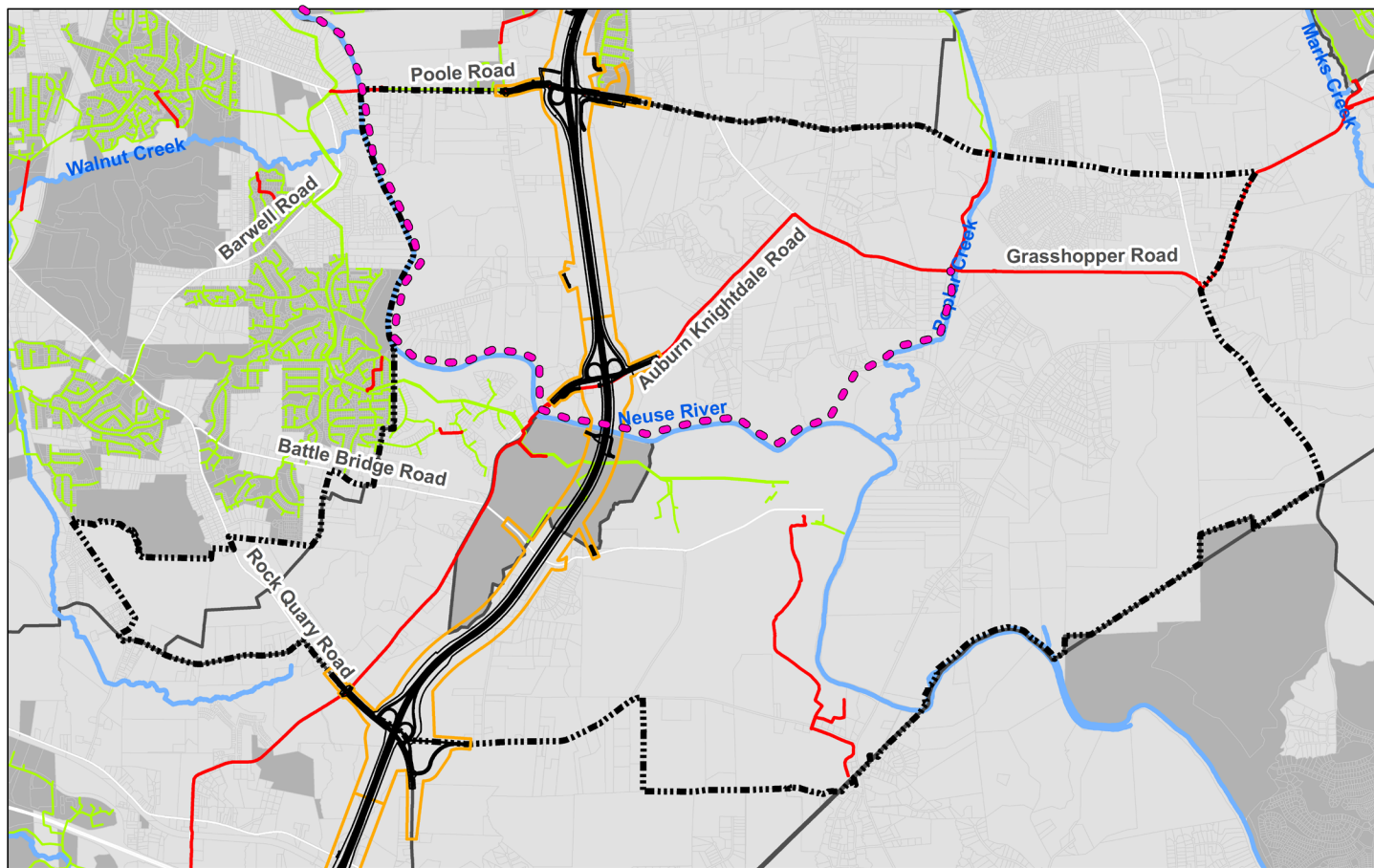
Planned Infrastructure Projects

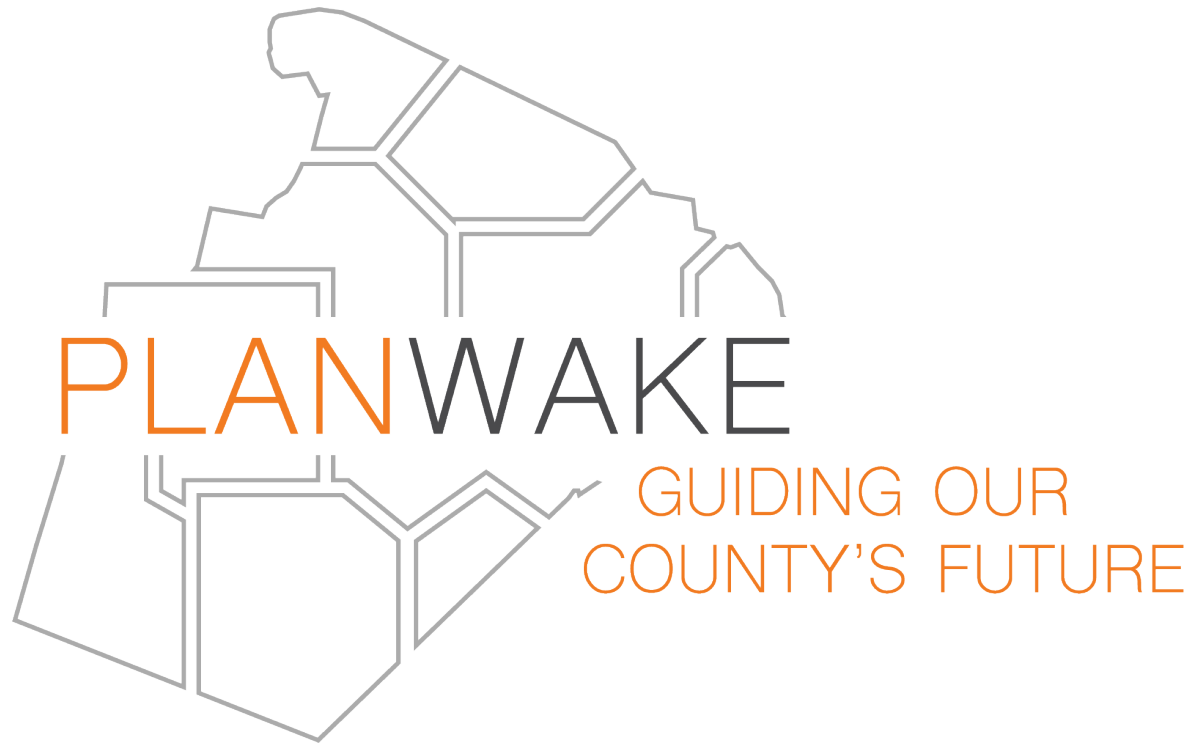


Raleigh Public Utilities

Legend

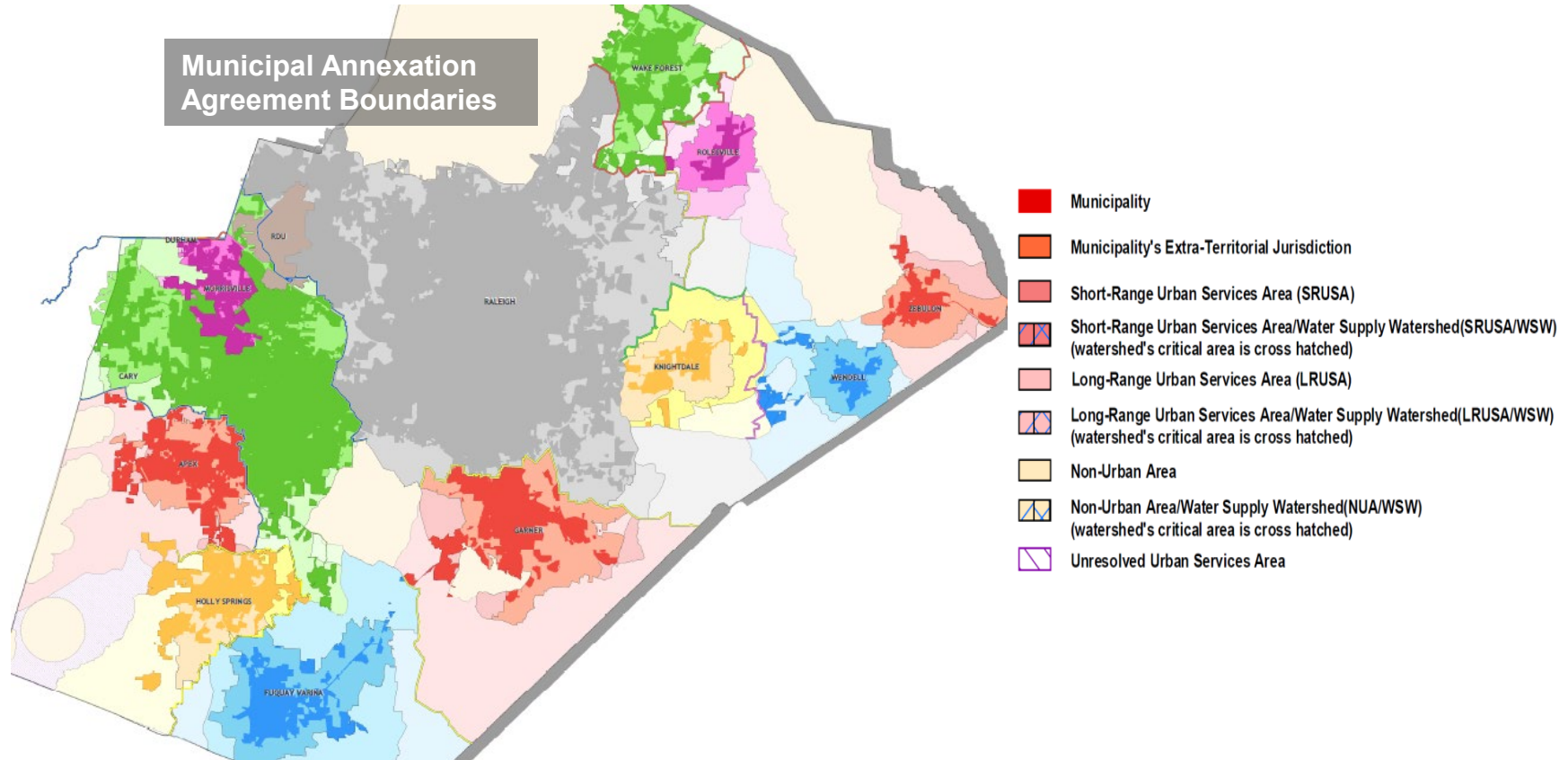
- SE Special Area Study Boundary
- Neuse River East Parallel Interceptor
- Existing Sewer Main
- Existing Sewer Line
- I-540 Preferred Route
- Creek/River





Next 10 Years – Next 250,000 Residents

Wake County Has a History of Working with Municipalities to Plan for Change



“PLANWake” Will Be the New Wake County Policy Guide

Guiding and Focusing Our Growth

- Annexation, Extra Territorial Jurisdiction (ETJ), and Urban Service Areas
- Land use, development and design
- Fiscal aspects of growth

Fostering Our Prosperity

- Economic and business development (focus on equity)
- Housing and lifestyle affordability (focus on workforce housing)
- Community diversity

Connecting Our People to Places

- Transportation mobility and safety (multimodal)
- Parking and access
- Greenways and trails

Sustaining Our Built Environment

- Utilities, wells, wastewater, and stormwater
- Solid waste
- Resiliency and planning for the impact of weather events

Serving Our Community

- Schools and education
- Parks, recreation, and open space
- Emergency services
- Community health (Health and Human Services)

Protecting Our Resources

- Historic preservation
- Farmland and food systems
- Air and water quality / conservation
- Wildlife and habitat protection and preservation



Raleigh

NEXT STEPS

Planning Process

- | | |
|------------------------------|-------------|
| 1. Understanding the Area | Summer 2019 |
| 2. Community Ideas & Options | Winter 2020 |
| 3. Recommendations | Spring 2020 |
| 4. Review & Adoption | Summer 2020 |



Raleigh

Questions for Today

1. *What do you hope this area will look like in 2050?*
2. *What do you need most to protect or enhance your land investment?*
3. *What do you see as opportunities for the future use or development of your land?*
4. *How does the information presented today influence your thoughts?*



Please Stay Involved With Us

Other Resources

Visit www.RaleighNC.gov,
search for Southeast Study

Staff Contact:

Donald Belk, AICP

Donald.Belk@raleighnc.gov or 919-996-4641

Southeast Special Area Study

Meeting for Landowners
Neuse River Resource Recovery
Facility
August 29, 2019



Thank You!

