



Southeast Special Area Study Phase 2

Community Workshop #1
Primera Asamblea
February 12, 2020



Raleigh





Raleigh

Tonight's Agenda

- I. Quick Refresher/Review of Phase 1
- II. Your Priorities from Phase 1
- III. Our Response to Your Input:
Potential Scenarios
- IV. Review the Phase II Survey
- V. Next Steps
- VI. Adjourn





Raleigh

Where Are We In the Study Process?

Now at Phase Two!

Planning Process

- | | | |
|----|------------------------------|-------------|
| 1. | Understanding the Study Area | Summer 2019 |
| 2. | Community Ideas & Options | Winter 2020 |
| 3. | Recommendations | Spring 2020 |
| 4. | Review & Adoption | Summer 2020 |

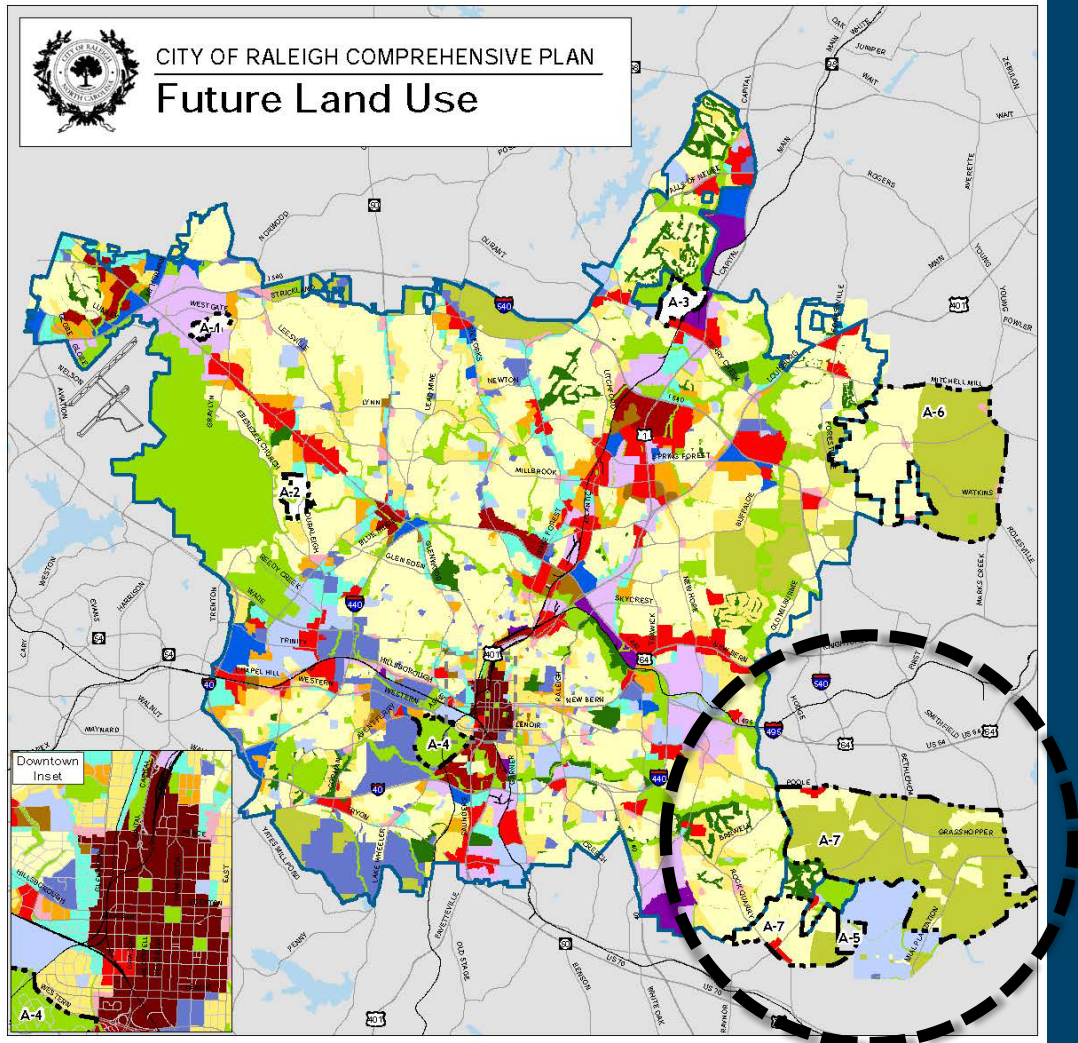


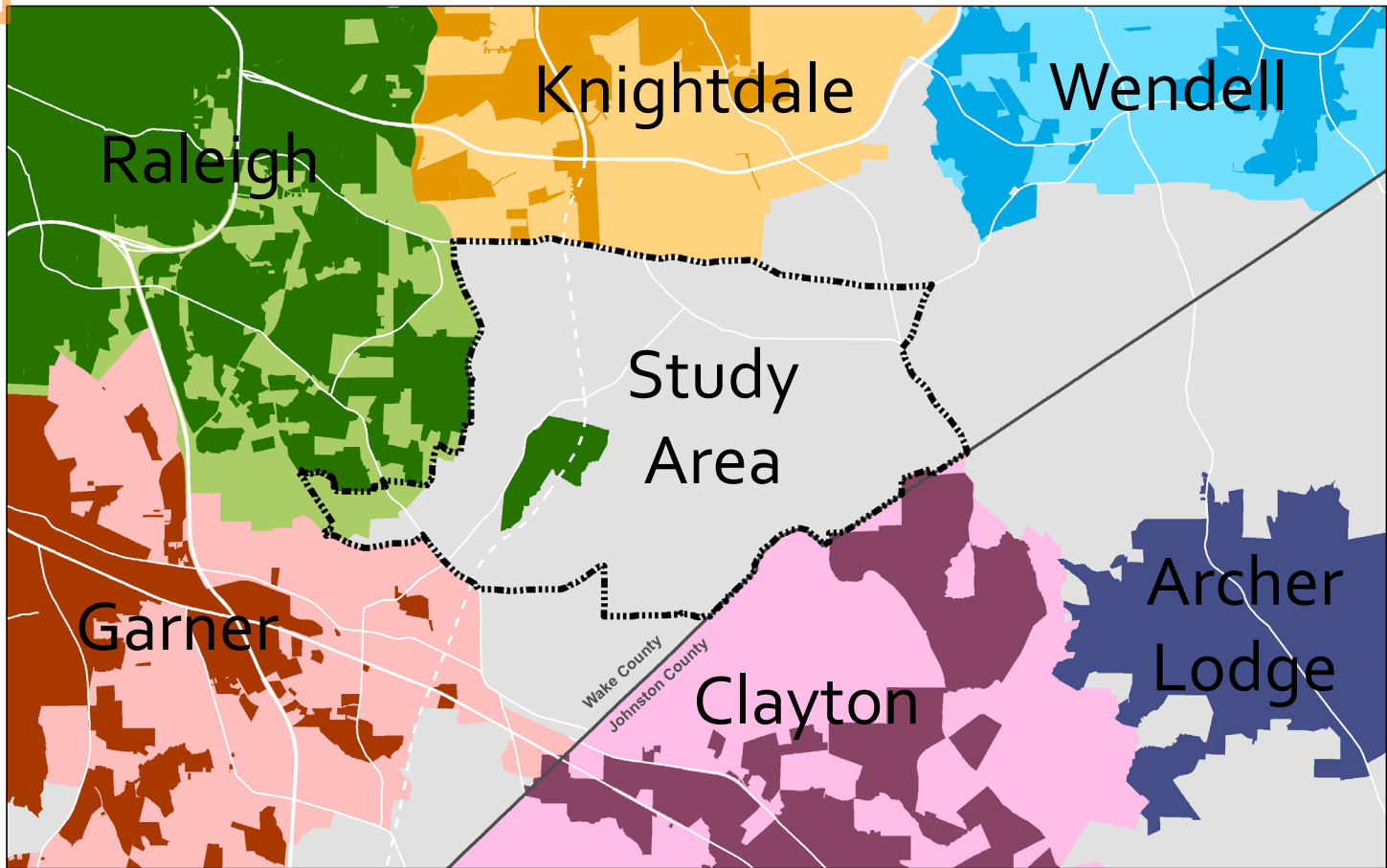
Raleigh



CITY OF RALEIGH COMPREHENSIVE PLAN

Future Land Use





Corporate Limits and Planning Jurisdictions

Corporate Limits	Planning Jurisdictions
Clayton	Clayton
Garner	Garner
Knightdale	Knightdale
Raleigh	Raleigh
Wendell	Wendell
Archer Lodge	Study Area Boundary

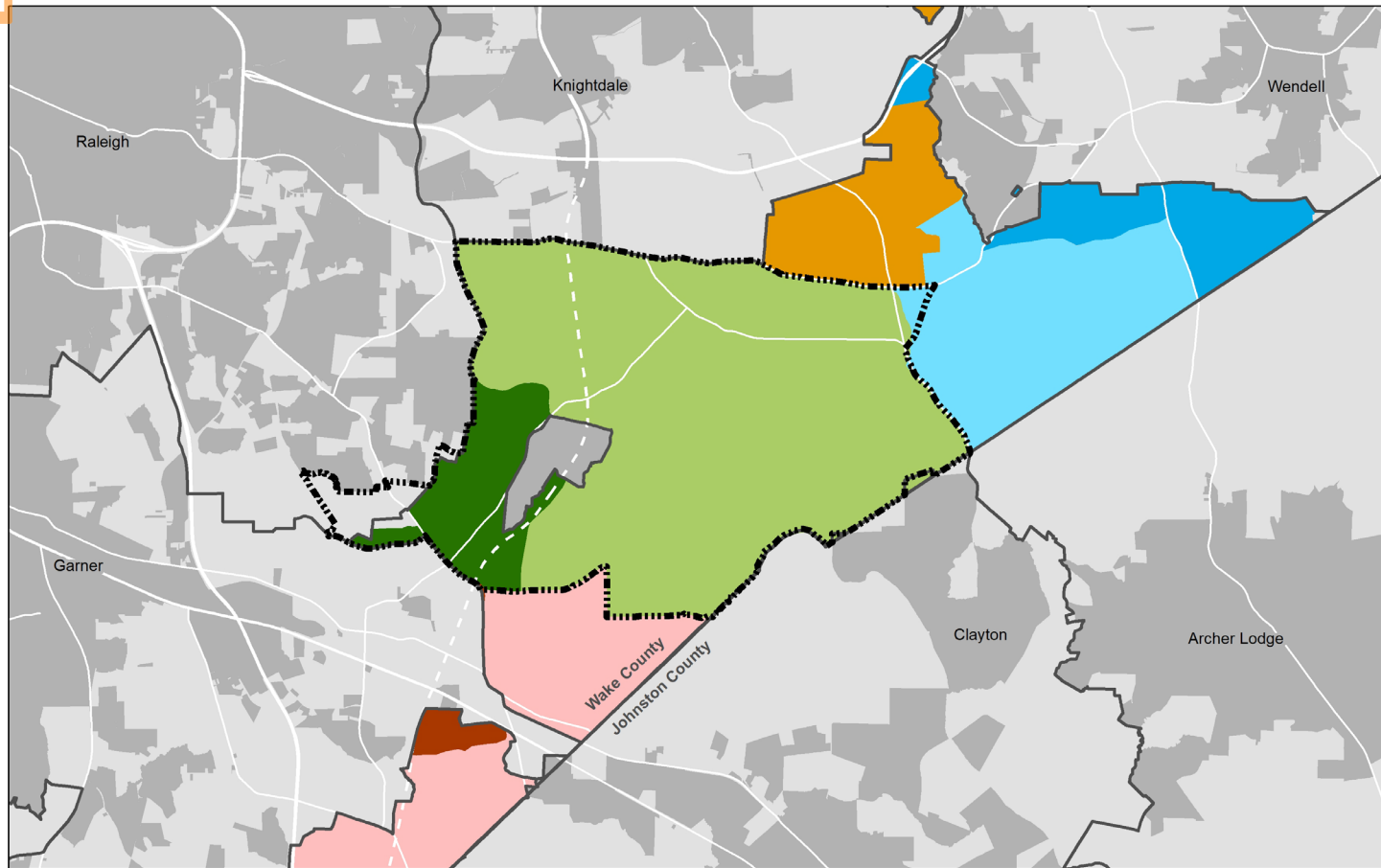


Raleigh

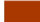






Why Do A Study?

Rural Area Experiencing Changing Conditions

- Predominantly rural area
- Significant farm and forestland
- Important preservation and conservation areas
- Consistent demand for residential development
- Planned infrastructure projects –
water/sewer/roads



Short Range USA Long Range USA

	Garner		Garner
	Raleigh		Raleigh
	Wendell		Wendell
	Knightdale		

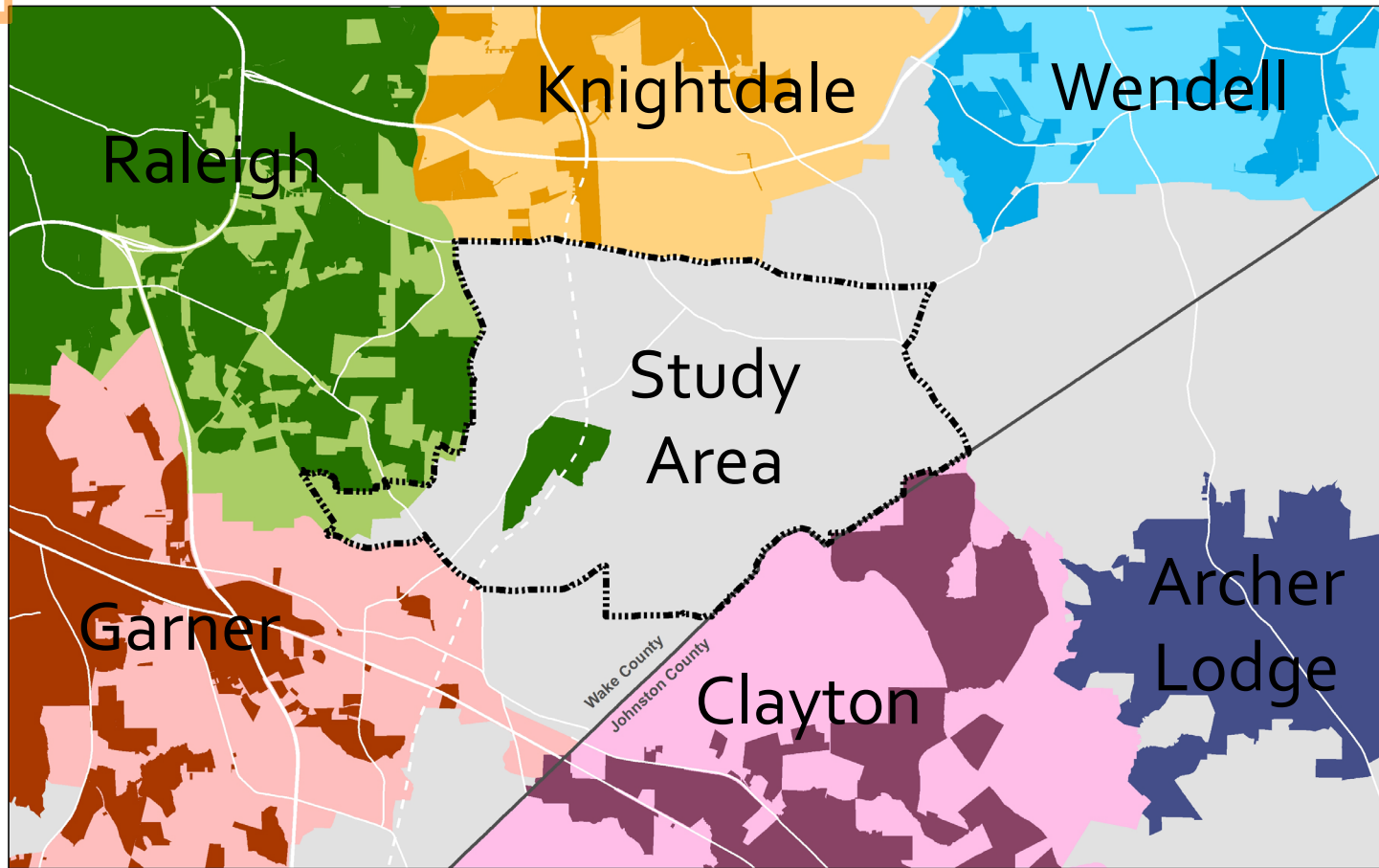




Raleigh

Phase I Priorities

1. Preserve natural resources and rural character
2. Improve travel for motorists
3. Improve travel for cyclists and pedestrians
4. Improve access to shopping and destinations

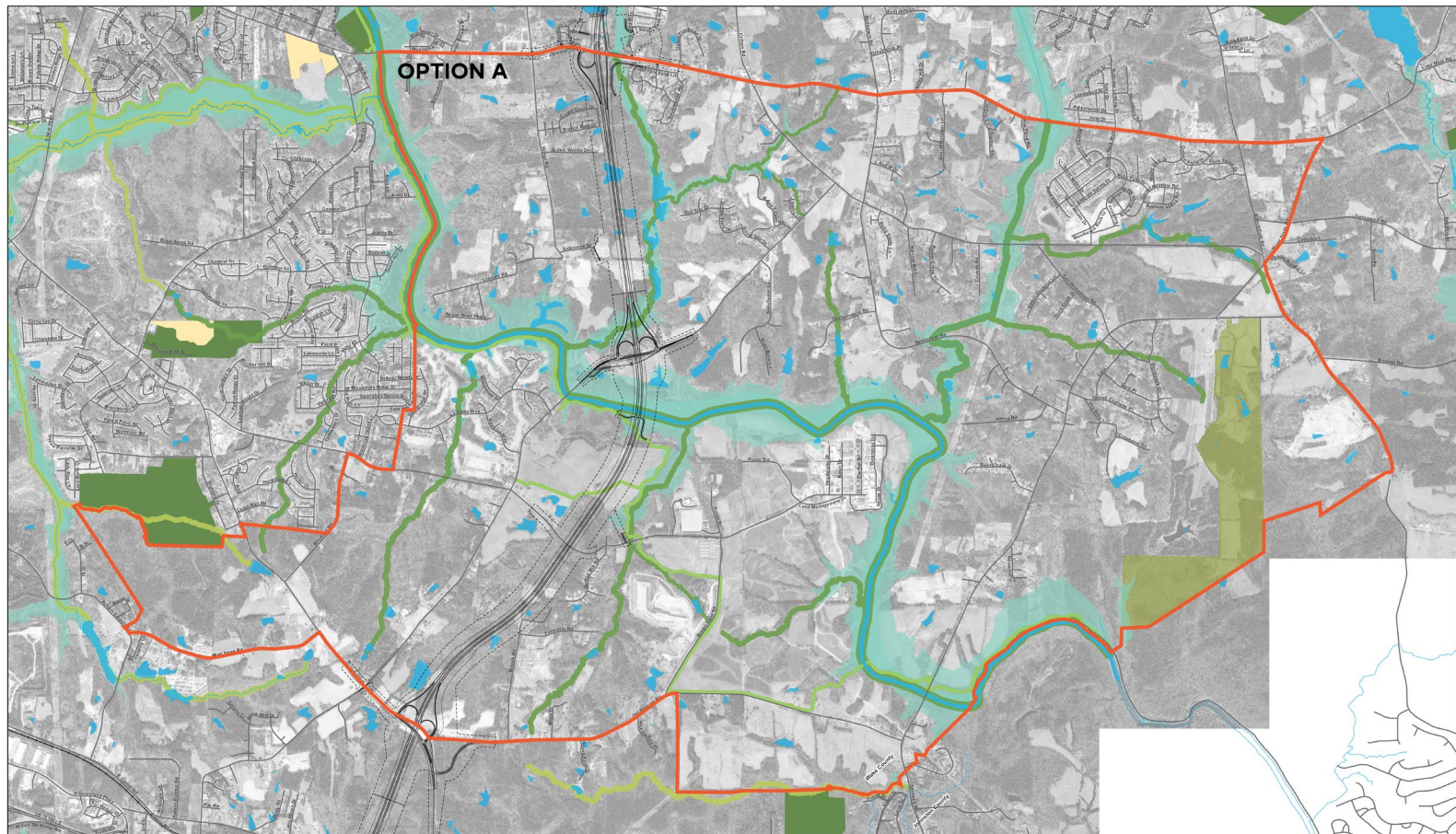


Southeast Special
Area Study

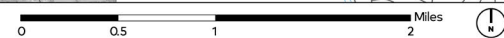


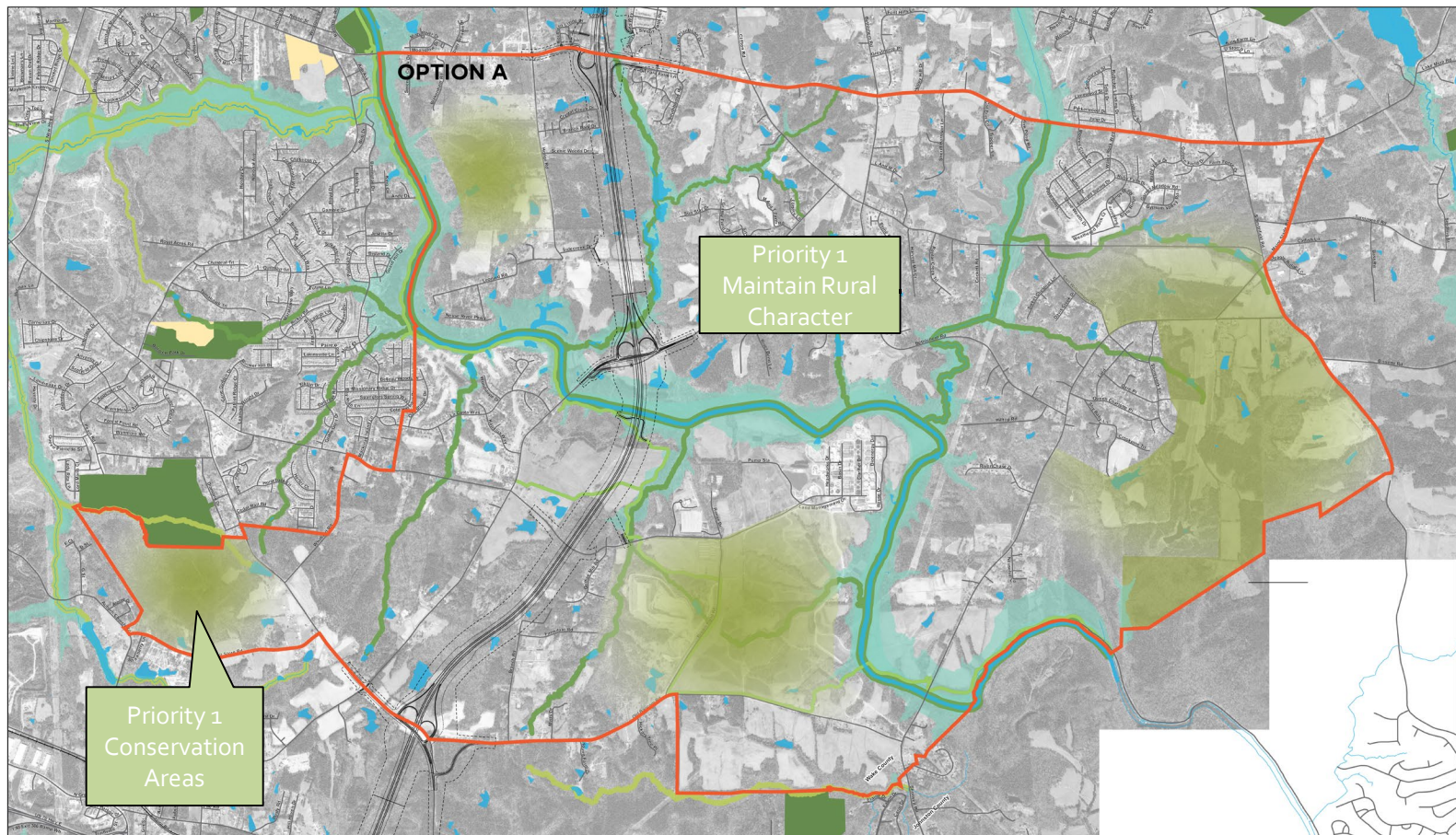
Corporate Limits and Planning Jurisdictions

Corporate Limits	Planning Jurisdictions
Clayton	Clayton
Garner	Garner
Knightdale	Knightdale
Raleigh	Raleigh
Wendell	Wendell
Archer Lodge	
	Study Area Boundary



**Southeast Special
Area Study**



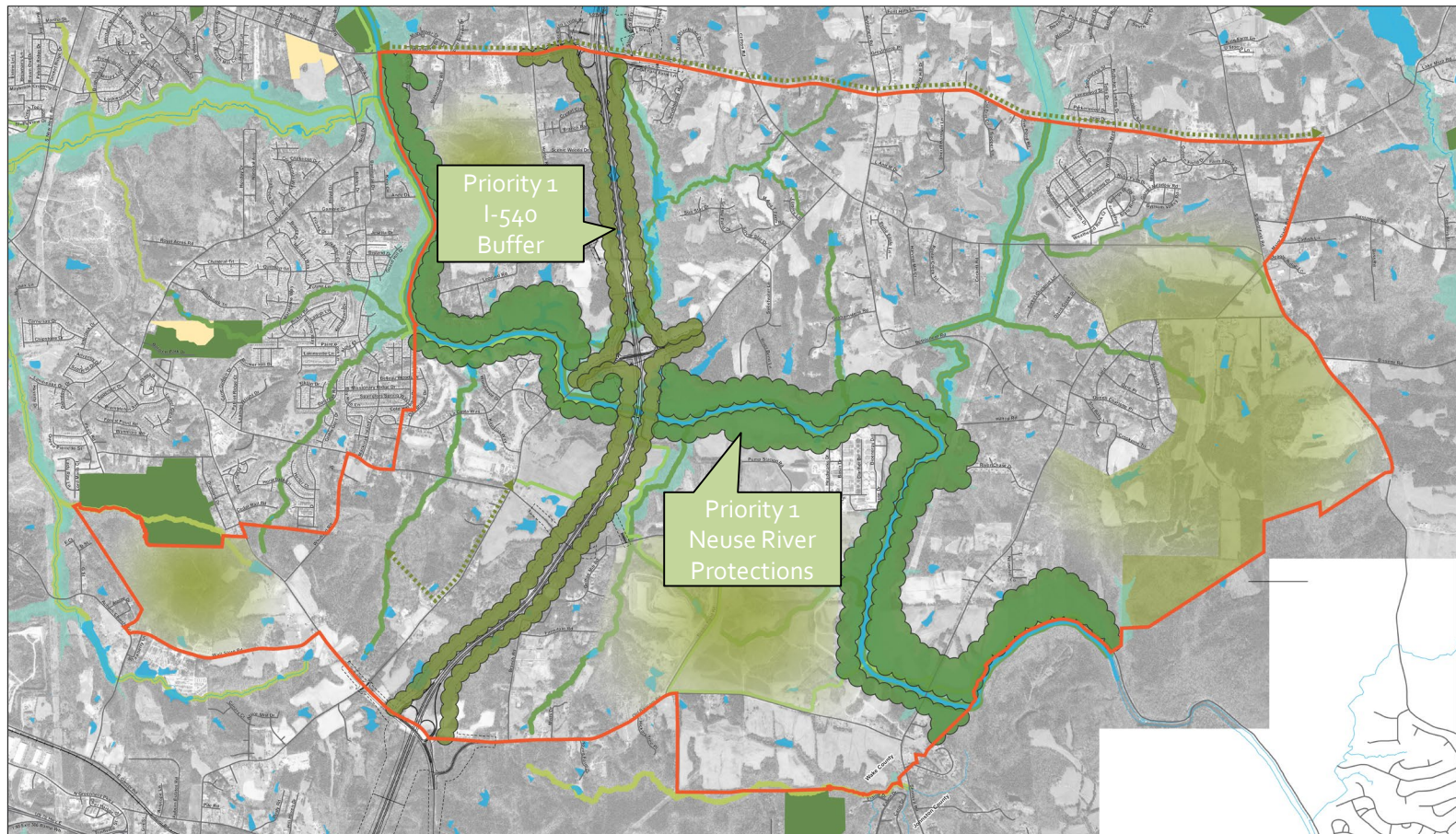


Southeast Special Area Study

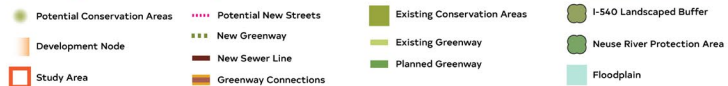
- | | | | |
|------------------------------|-----------------------|-----------------------------|-----------------------------|
| Potential Conservation Areas | Potential New Streets | Existing Conservation Areas | I-540 Landscaped Buffer |
| Development Node | New Greenway | Existing Greenway | Neuse River Protection Area |
| Study Area | New Sewer Line | Planned Greenway | Floodplain |
| | Greenway Connections | | |

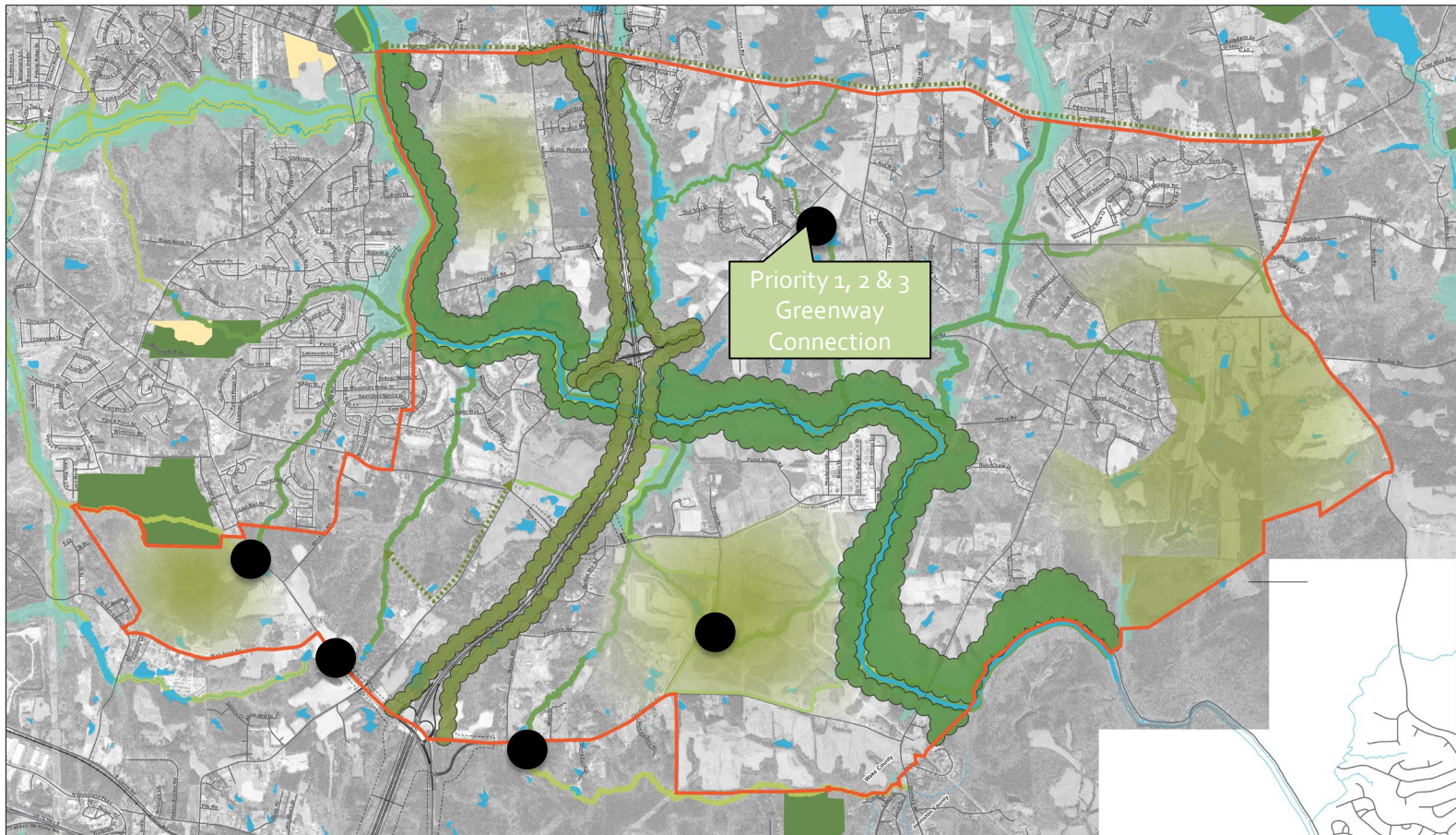
0 0.5 1 2 Miles





Southeast Special Area Study



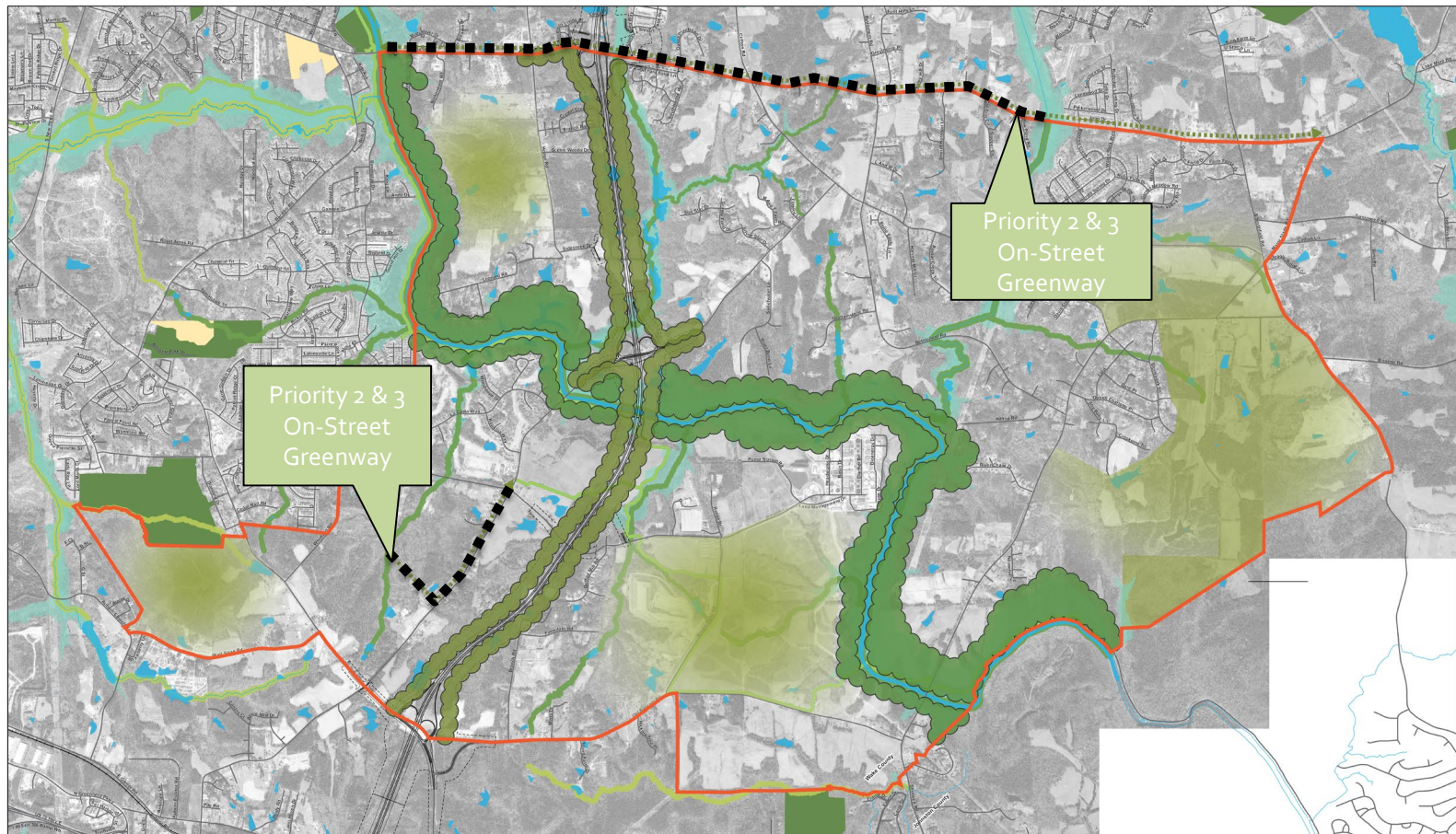


Southeast Special Area Study

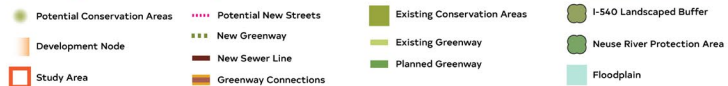
- | | | | |
|------------------------------|-----------------------|-----------------------------|-----------------------------|
| Potential Conservation Areas | Potential New Streets | Existing Conservation Areas | I-540 Landscaped Buffer |
| Development Node | New Greenway | Existing Greenway | Neuse River Protection Area |
| Study Area | New Sewer Line | Planned Greenway | Floodplain |
| | Greenway Connections | | |

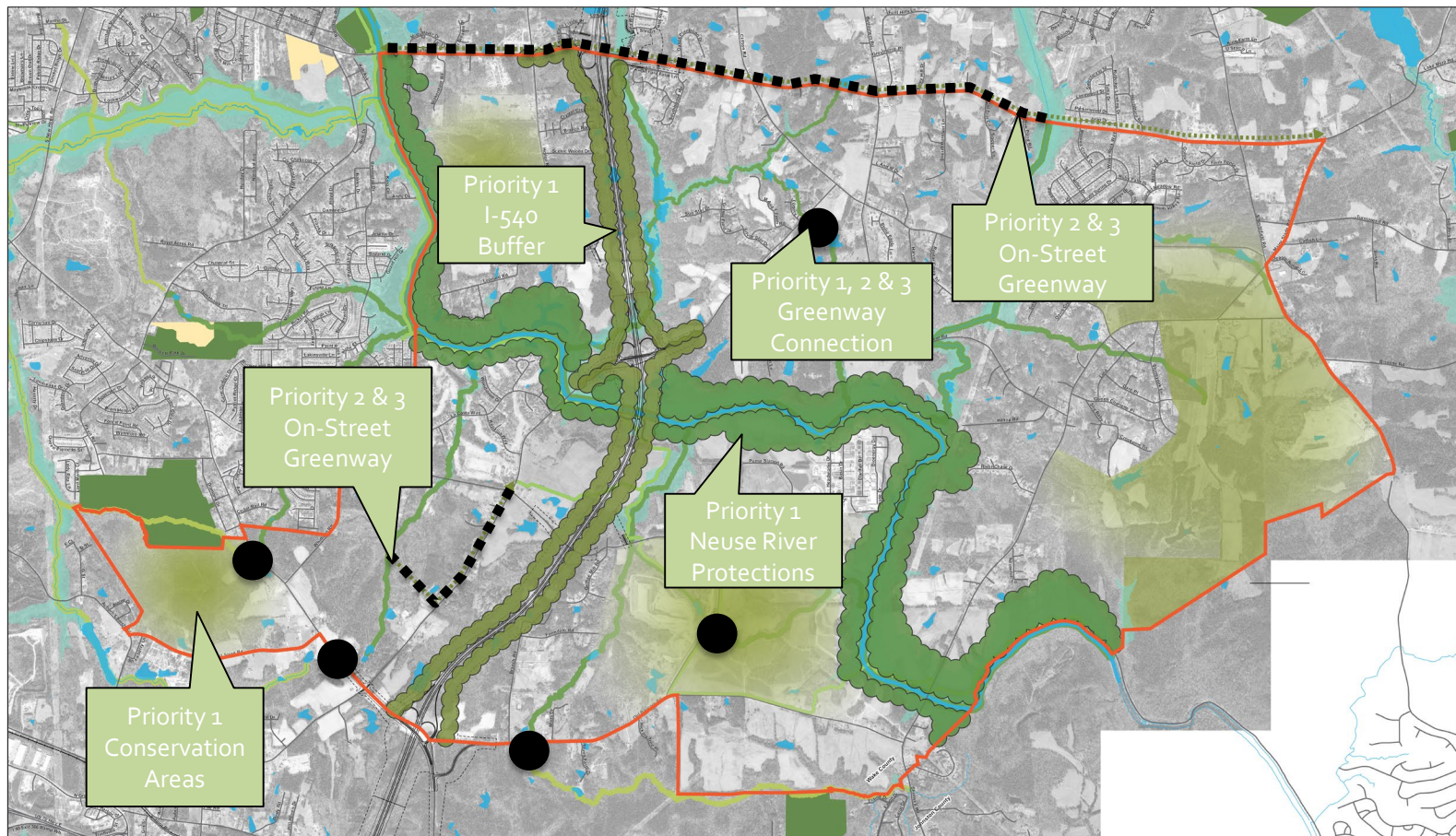
0 0.5 1 2 Miles



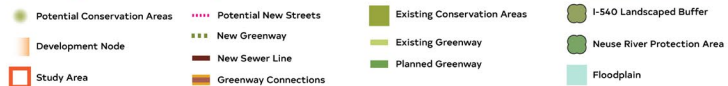


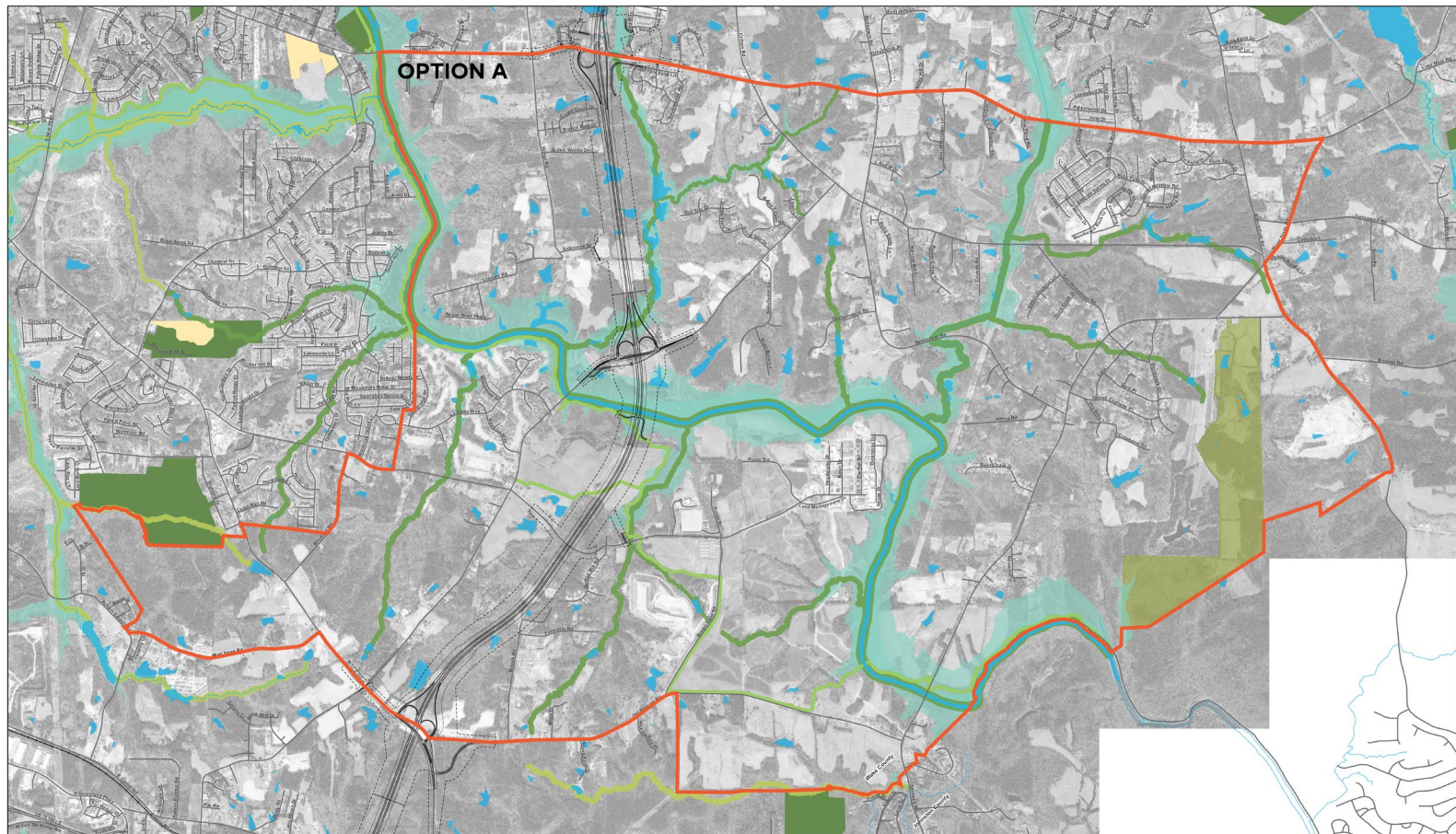
Southeast Special Area Study





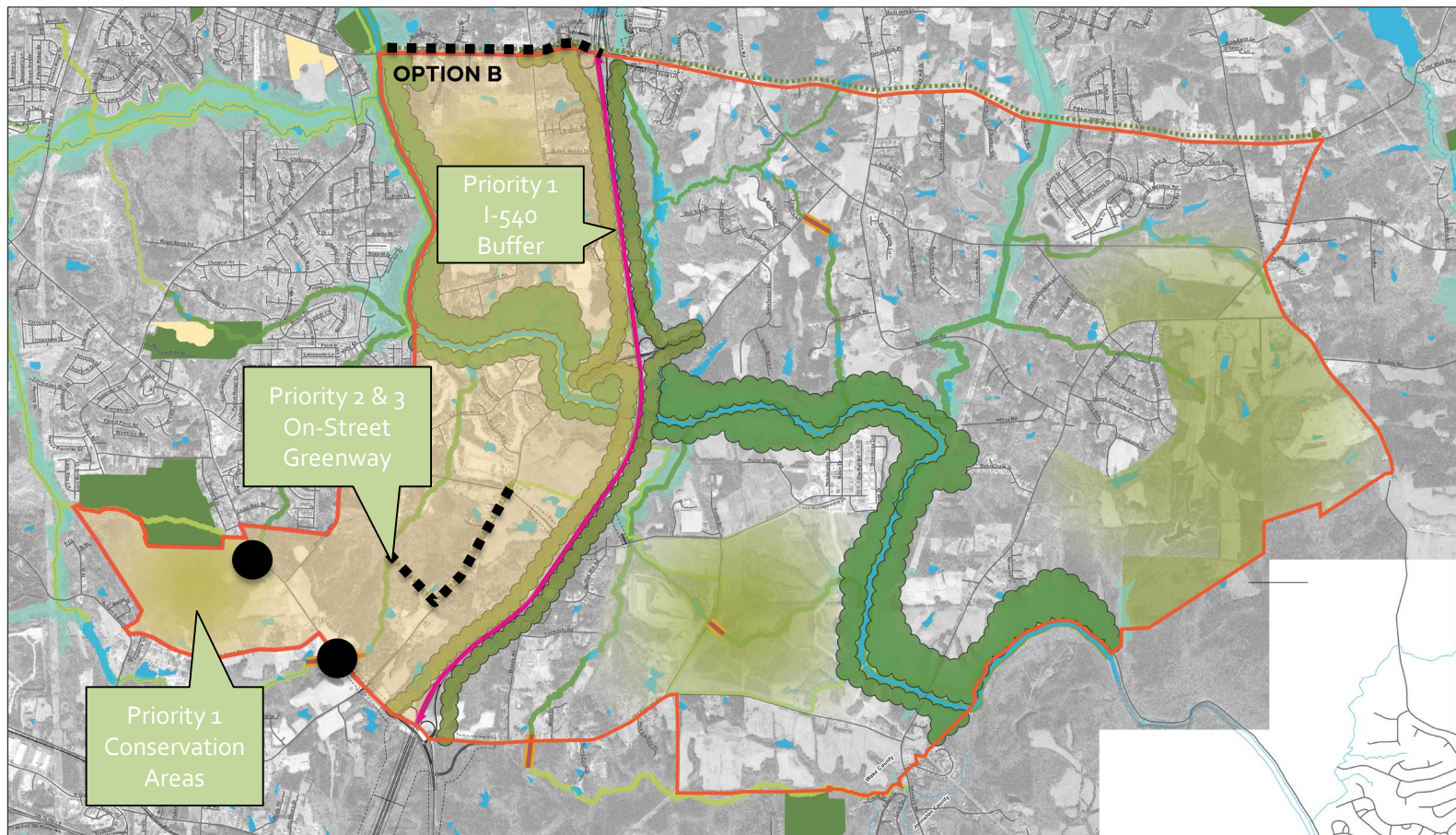
Southeast Special Area Study



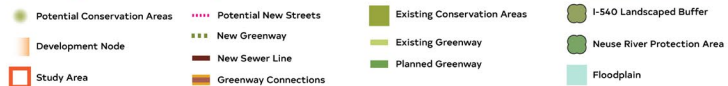


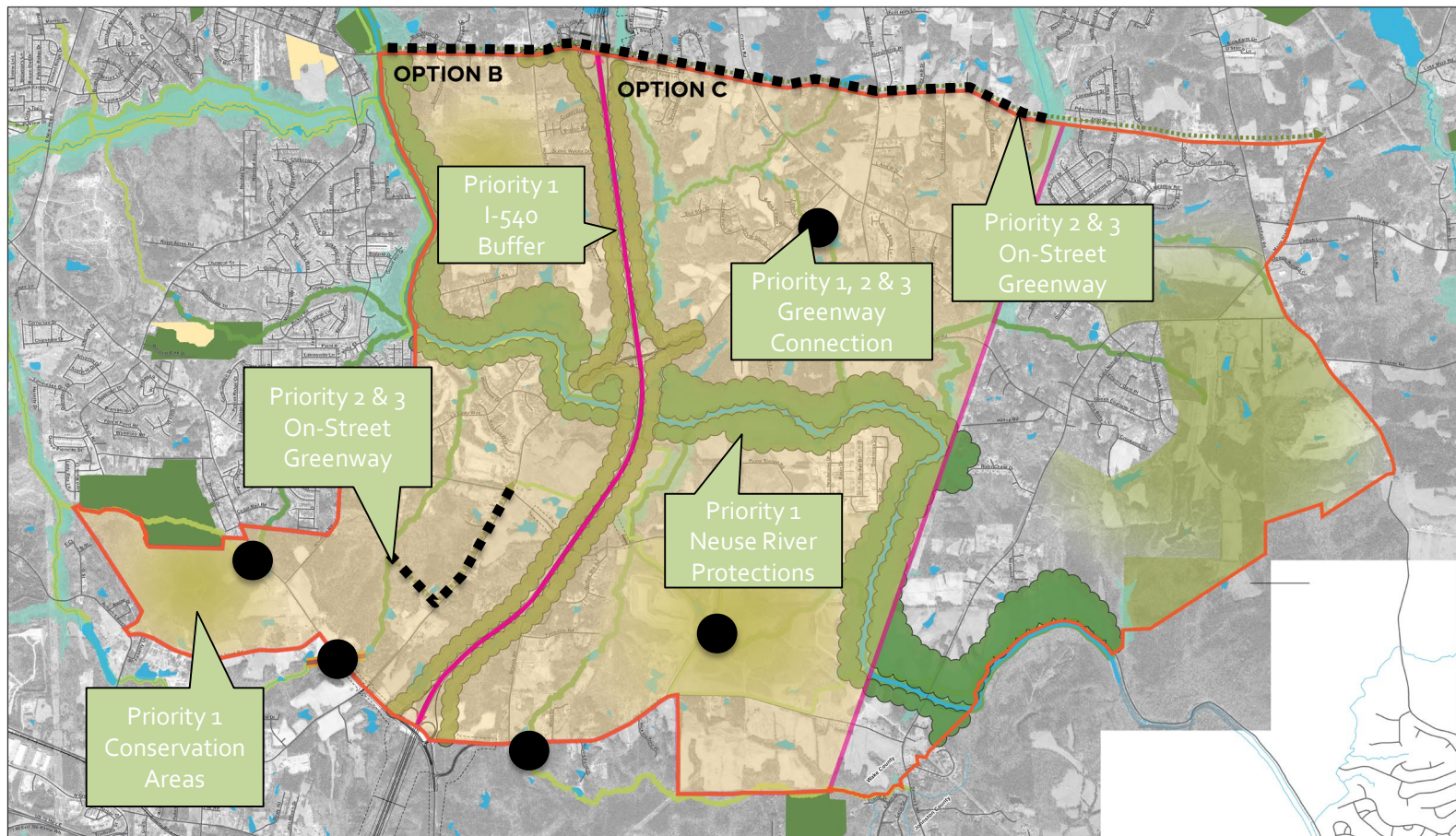
**Southeast Special
Area Study**



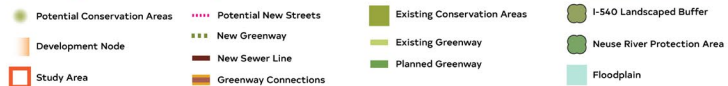


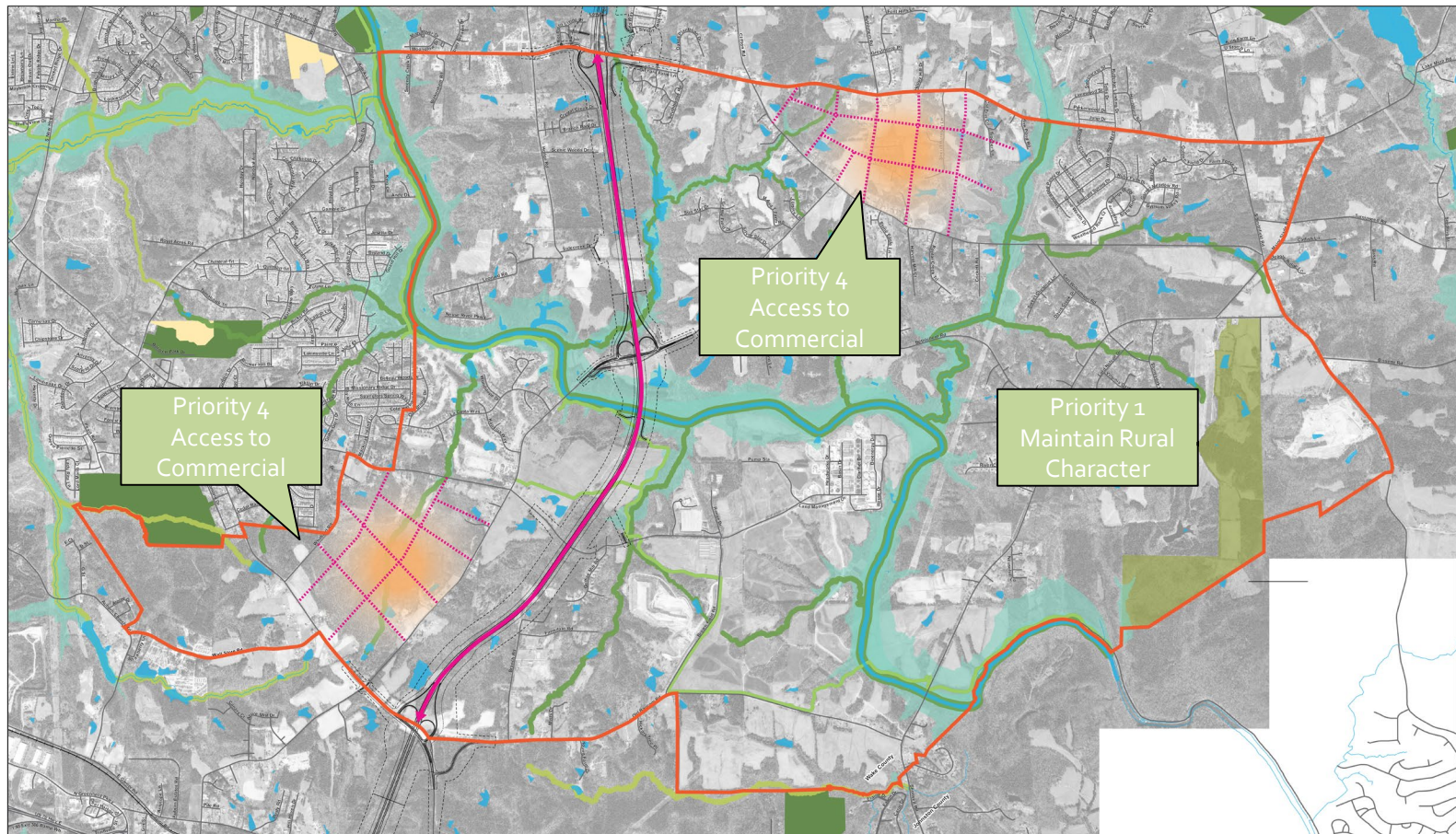
Southeast Special Area Study





Southeast Special Area Study

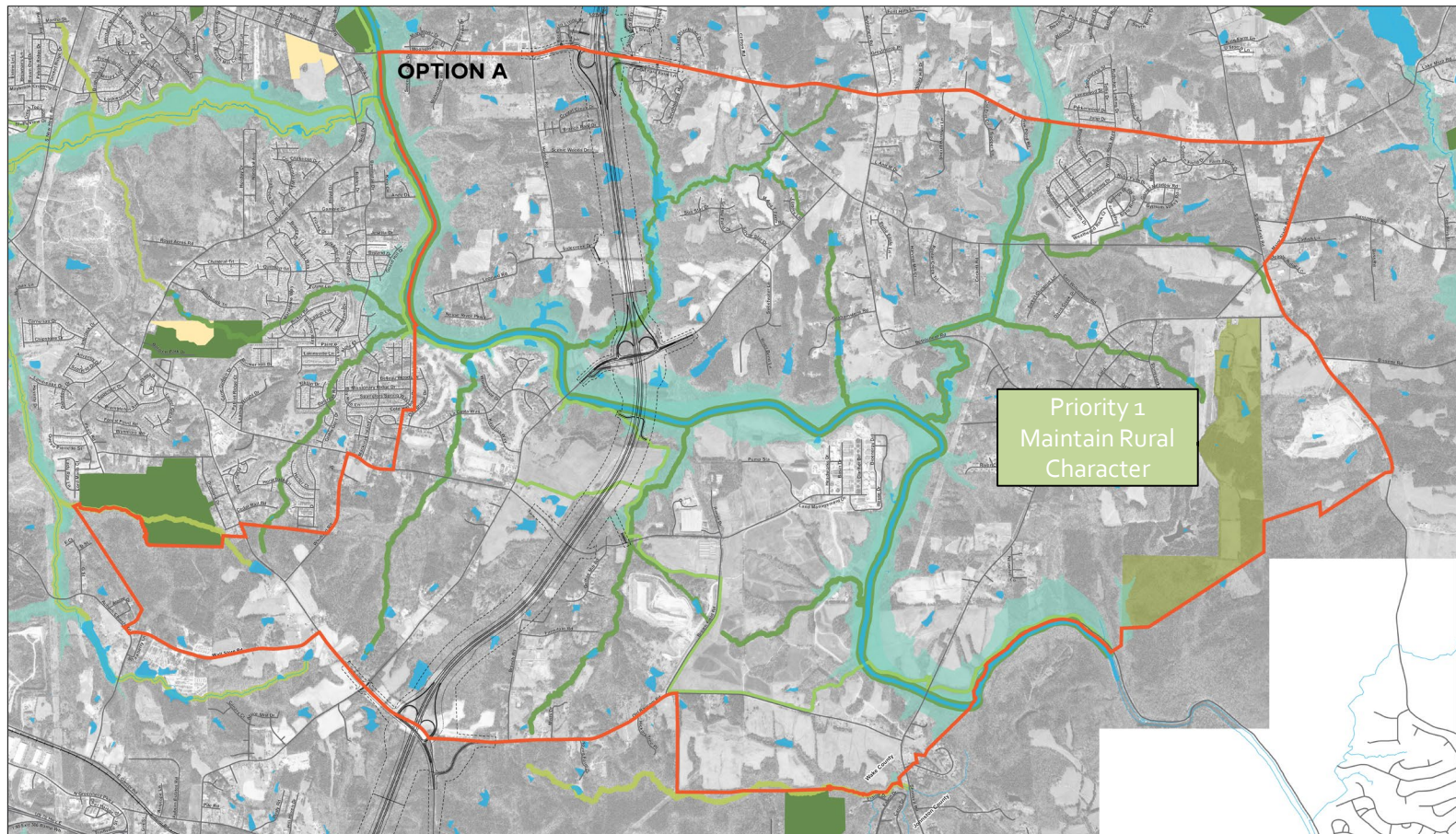




Southeast Special Area Study

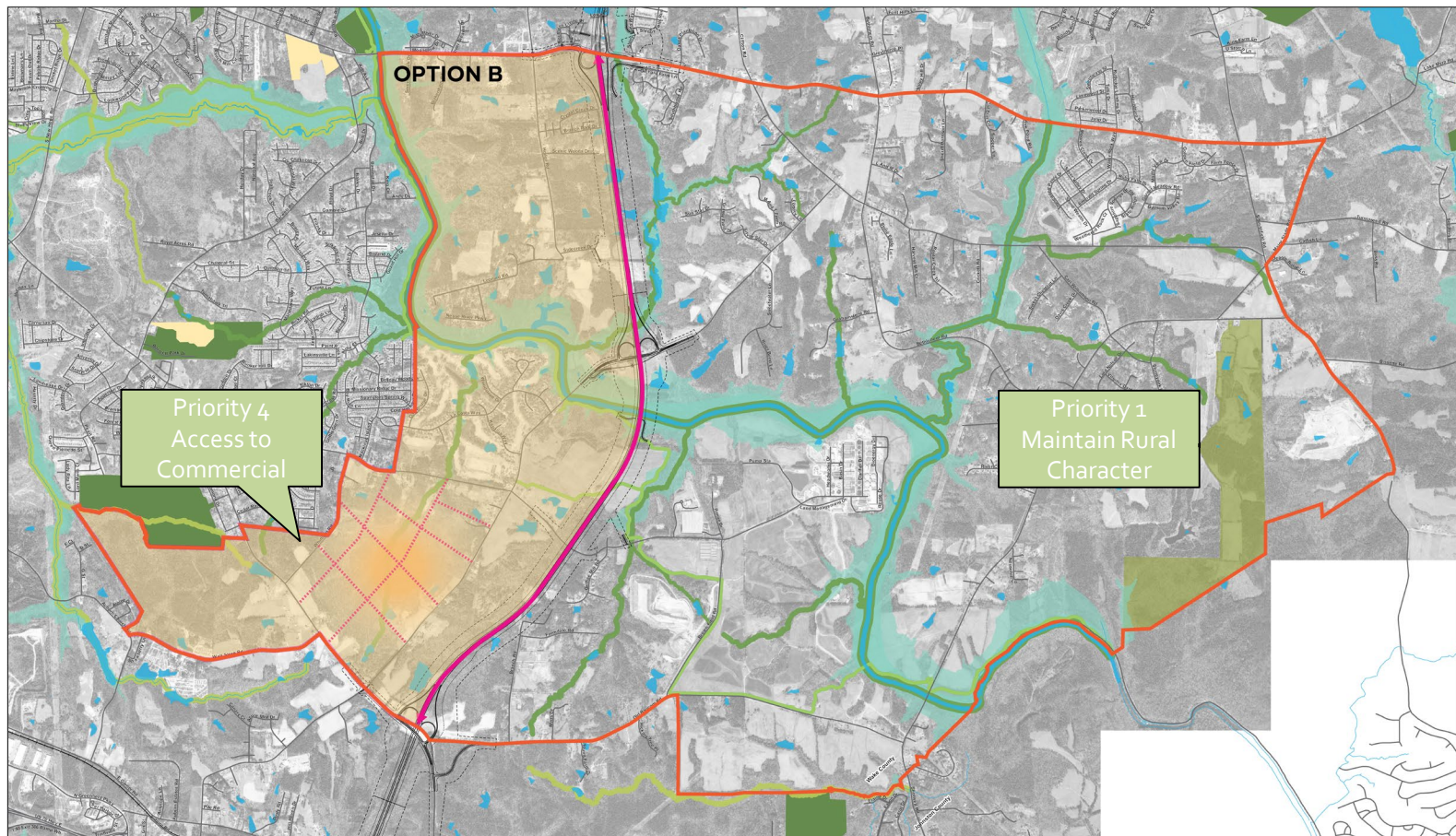
- | | | | |
|------------------------------|-----------------------|-----------------------------|-----------------------------|
| Potential Conservation Areas | Potential New Streets | Existing Conservation Areas | I-540 Landscaped Buffer |
| Development Node | New Greenway | Existing Greenway | Neuse River Protection Area |
| Study Area | New Sewer Line | Planned Greenway | Floodplain |
| | Greenway Connections | | |





**Southeast Special
Area Study**

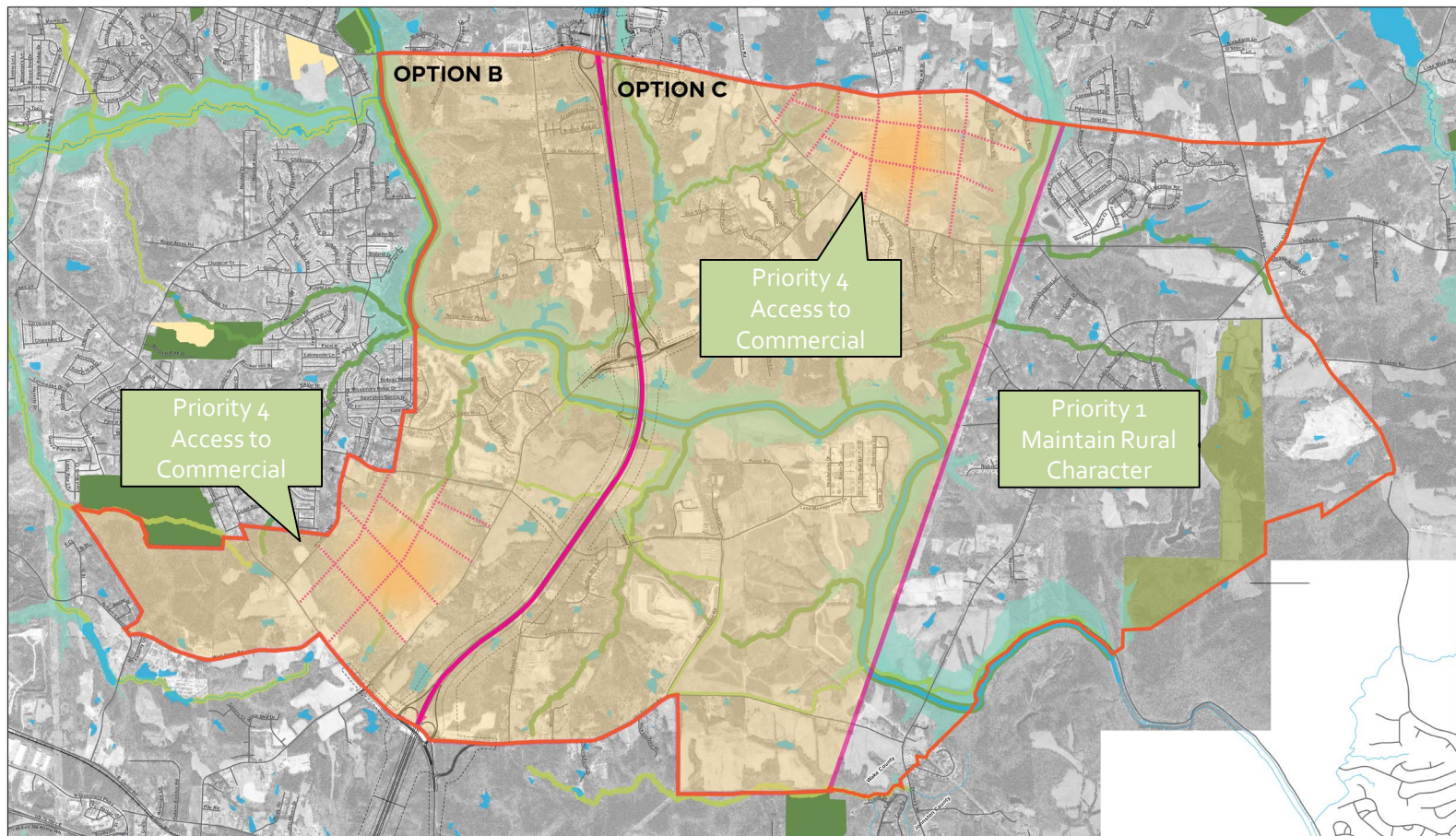




Southeast Special Area Study

- | | | |
|------------------------------|-------------------------|-----------------------------|
| Potential Conservation Areas | Possible Street Network | Existing Conservation Areas |
| Development Node | New Sewer Line | Existing Greenway |
| Study Area | Greenway Connections | Planned Greenway |





Southeast Special Area Study

- | | | | |
|------------------------------|-----------------------|-----------------------------|-----------------------------|
| Potential Conservation Areas | Potential New Streets | Existing Conservation Areas | I-540 Landscaped Buffer |
| Development Node | New Greenway | Existing Greenway | Neuse River Protection Area |
| Study Area | New Sewer Line | Planned Greenway | Floodplain |
| | Greenway Connections | | |





Raleigh

Phase II Survey ETJ Expansion

Option A: Do not extend ETJ

Option B: Extend ETJ to I-540 (about 1 mile)

Option C: Extend ETJ by 3 miles

You may complete the Phase II Survey now, or complete it online at raleighnc.gov (Search SE Study Area)



SE Area Study –Next Steps

Planning Process

- | | |
|------------------------------|-------------|
| 1. Understanding the Area | Summer 2019 |
| 2. Community Ideas & Options | Winter 2020 |
| 3. Recommendations | Spring 2020 |
| 4. Review & Adoption | Summer 2020 |

Southeast Special Area Study

Phase 2 Community Workshop
February 12, 2020

Don Belk
919-996-4641
Donald.Belk@raleighnc.gov



Raleigh



Thank You!