



WAKEFIELD AREA STUDY



Raleigh
Planning

EXECUTIVE SUMMARY



TABLE OF CONTENTS

Study Overview	1
Community Participation	3
Recommendations	4
Crossing Falls of Neuse Road	5
Crossing Wakefield Pines Drive.....	7
Connecting the Greenways.....	9
Biking in Wakefield.....	12

Study Overview

The Wakefield Small Area Study focuses on an area (as shown in Figure 1) in north Raleigh between Falls Lake and the town of Wake Forest. The area includes Falls of Neuse Road from the Neuse River to Capital Boulevard/US-1. It also includes Wakefield Pines Drive, Forest Pines Drive, and surrounding areas.

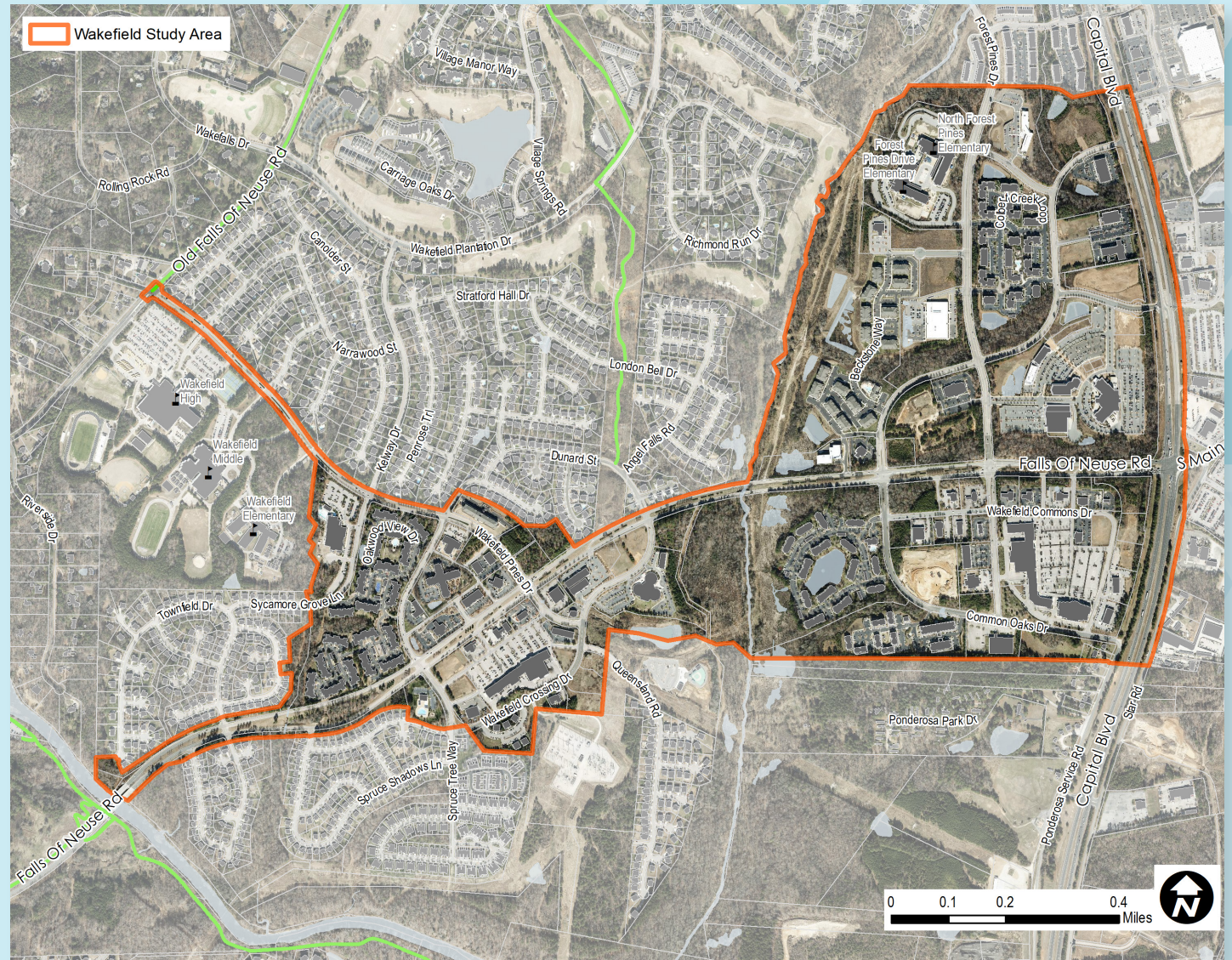


FIGURE 1: WAKEFIELD STUDY AREA

The study identified projects and policies that support the following community goals to improve:



Community Participation

The Wakefield Small Area Study was guided by community input and participation. The project started with research by the project team through a series of stakeholder group meetings. These meetings invited community and civic groups to discuss their understanding of the study area and present issues. The groups included public safety officials, and parks and environmental advocates. The project began with an online survey with over 250 participants. The results helped identify a community need for off-road and separated cycling routes and important connections to nearby amenities, such as the greenway. It also showed areas where safety and speeding were of concern.



Wakefield Ask-A-Planner, June 23, 2021

The project team analyzed the existing conditions after learning about the issues and opportunities in the study area from the community. This study looked at traffic patterns, safety issues, speeding, and existing sidewalks and bike lanes. It also looked at environmental features, land use, existing policy, and conducted a market study. The content of this analysis was presented to the community through

an online open house. The open house asked follow-up questions about potential recommendations that study could offer. This feedback helped the project team propose draft recommendations to address the community concerns and desires. In a final virtual meeting and online survey, nearly 200 people shared their thoughts on the final recommendations.



Recommendations

The Wakefield study aims to improve transportation safety. This includes the walkability and sense of destination in the Wakefield area. The study recommends projects to:



Add multi-modal connections



Encourage slower car speeds through street design



Increase access to natural resources

The following section summarizes the projects recommended by the Wakefield study.

Crossing Falls of Neuse Road



FIGURE 3. FALLS OF NEUSE MID BLOCK CROSSING



- High-quality intersections at Village Pines Lane, Wakefield Pines Drive, Dunard Street, and Forest Pines Drive. A high-quality intersection is one where pedestrians can cross safely and comfortably in all directions.
- Mid-block Crossing to the median multi-use path and potential Richland Creek Greenway.

Crossing Falls of Neuse Road



FIGURE 3.
FALLS OF NEUSE
MID BLOCK CROSSING

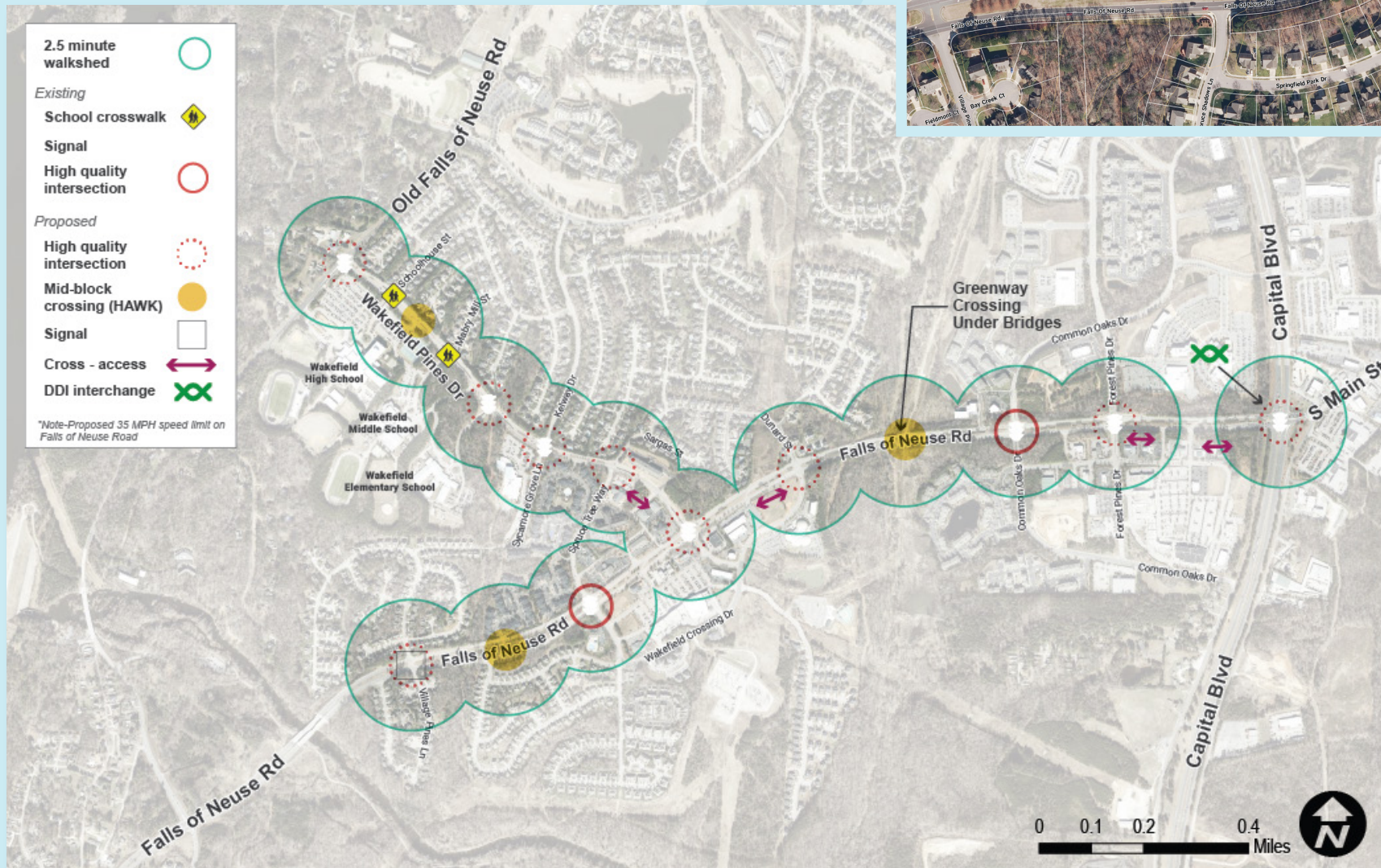
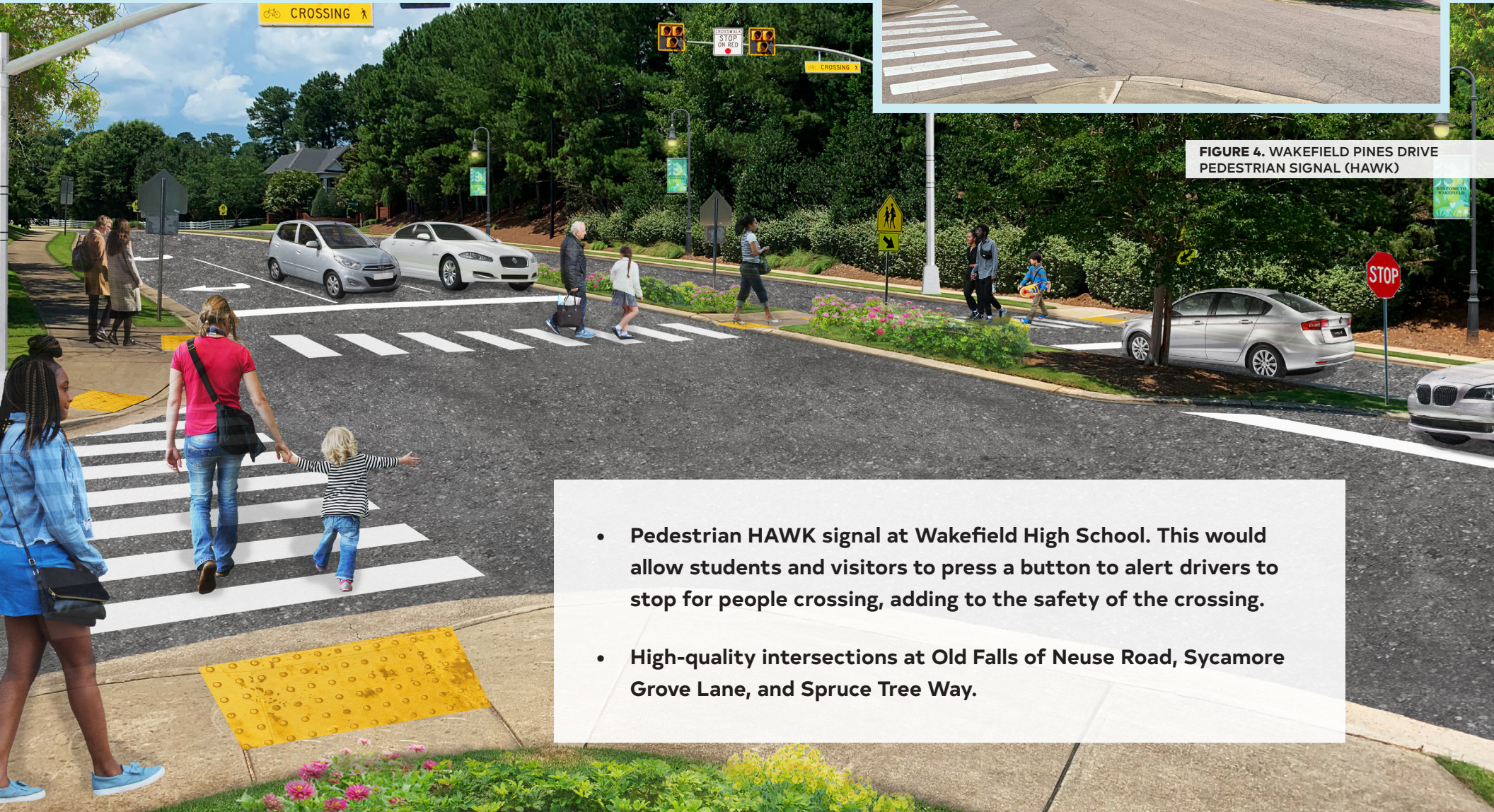


FIGURE 2.
PREFERRED ACCESS
PLAN

Crossing Wakefield Pines Drive



**FIGURE 4. WAKEFIELD PINES DRIVE
PEDESTRIAN SIGNAL (HAWK)**



- Pedestrian HAWK signal at Wakefield High School. This would allow students and visitors to press a button to alert drivers to stop for people crossing, adding to the safety of the crossing.
- High-quality intersections at Old Falls of Neuse Road, Sycamore Grove Lane, and Spruce Tree Way.

Crossing Wakefield Pines Drive

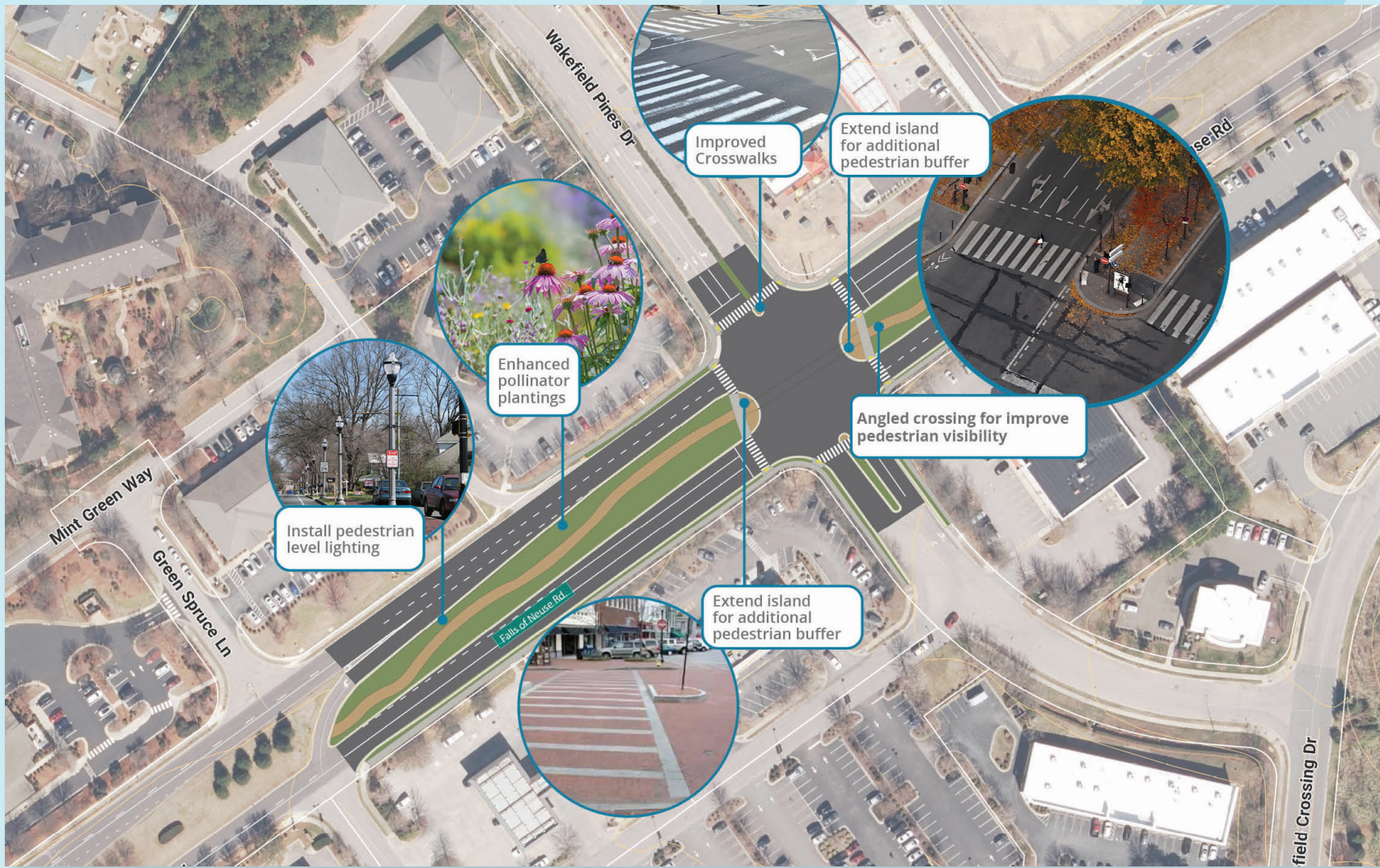
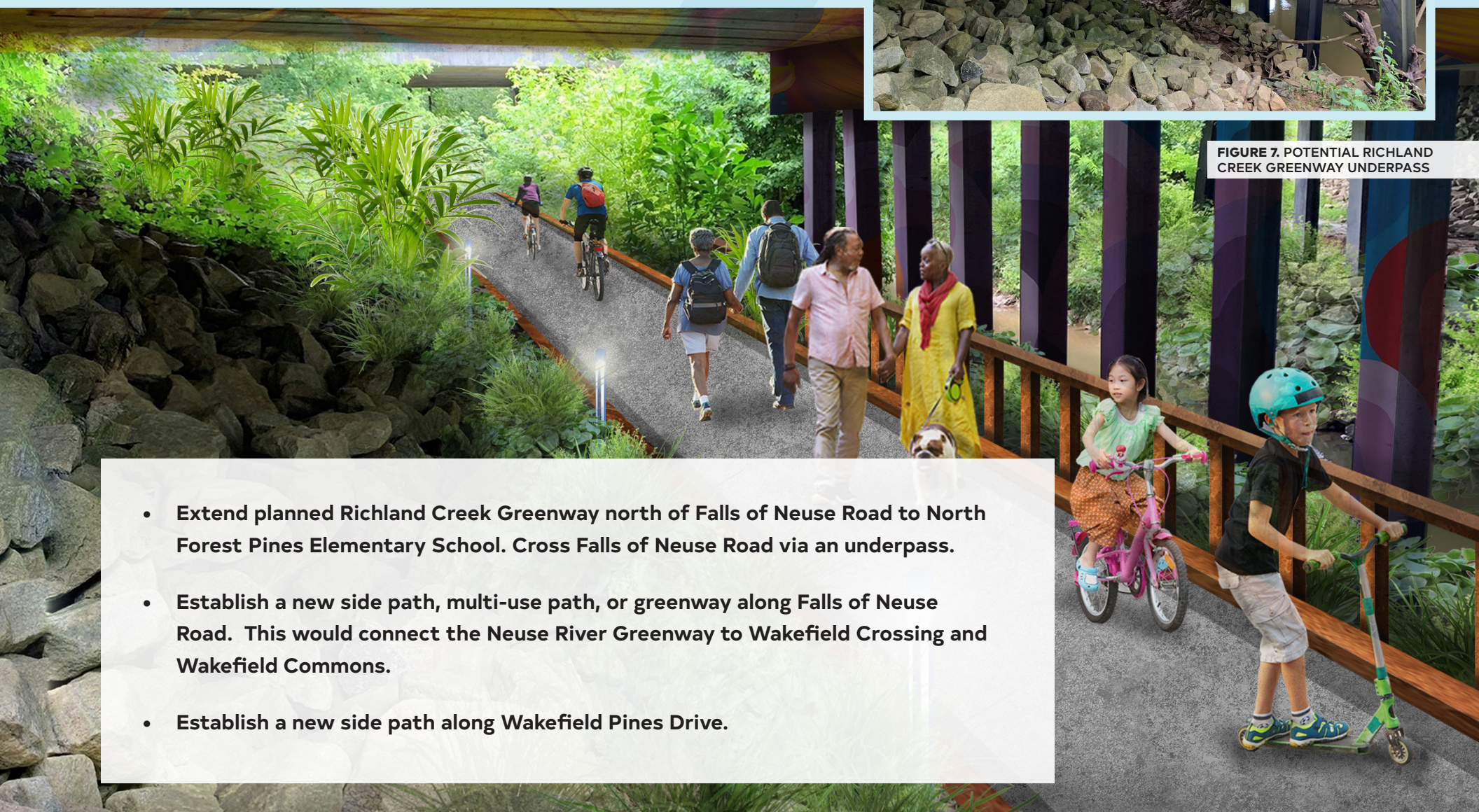


FIGURE 5.
INTERSECTION
SAFETY

Connecting the Greenways



FIGURE 7. POTENTIAL RICHLAND CREEK GREENWAY UNDERPASS



- **Extend planned Richland Creek Greenway north of Falls of Neuse Road to North Forest Pines Elementary School. Cross Falls of Neuse Road via an underpass.**
- **Establish a new side path, multi-use path, or greenway along Falls of Neuse Road. This would connect the Neuse River Greenway to Wakefield Crossing and Wakefield Commons.**
- **Establish a new side path along Wakefield Pines Drive.**

Connecting the Greenways

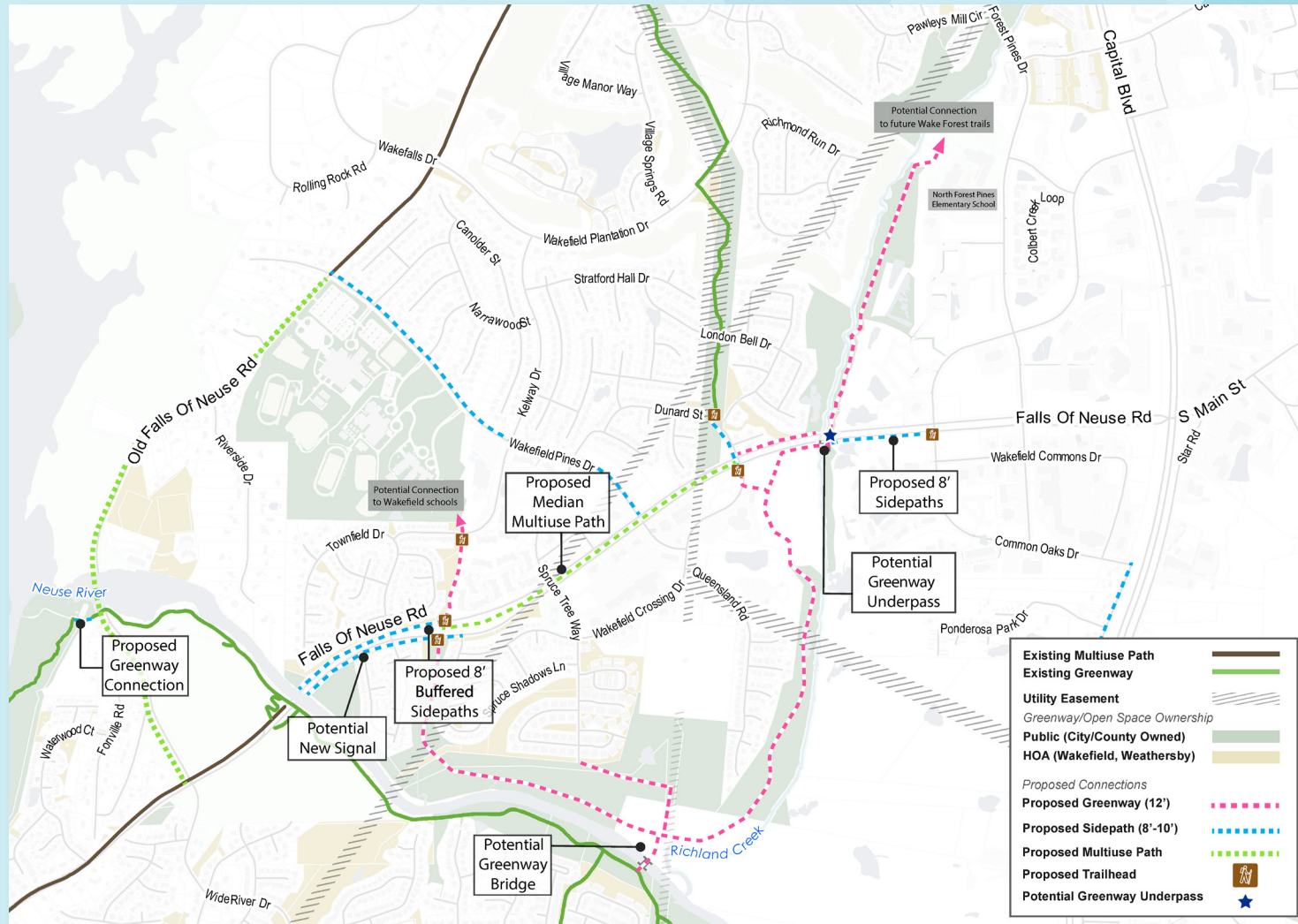


FIGURE 6.
GREENWAY CONNECTIONS

Connecting the Greenways

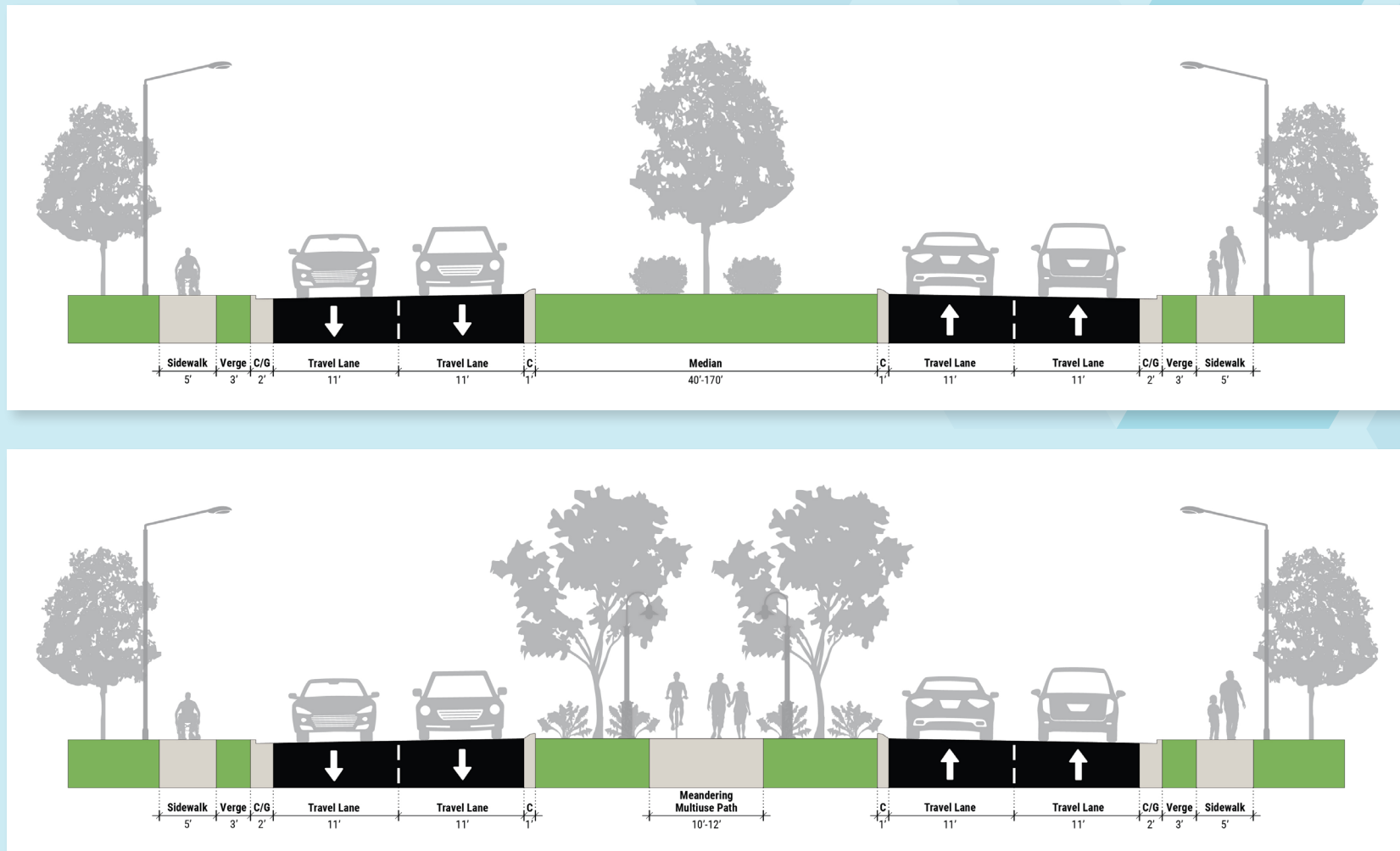


FIGURE 8. ALLS OF NEUSE ROAD SECTION

Biking in Wakefield



FIGURE 11. COMMON OAKS DRIVE SEPARATED BIKE LANE

- Establish signed bikeways along neighborhood streets, including Dunard Street, London Bell Drive, Strafford Hall Drive, and Narrowood Street.
- Establish separated bike lanes along Kelway Drive, Spruce Tree Way, Wakefield Crossing Drive, Wakefield Commons Drive, Common Oaks Drive, and Green Elm Lane.



Biking in Wakefield

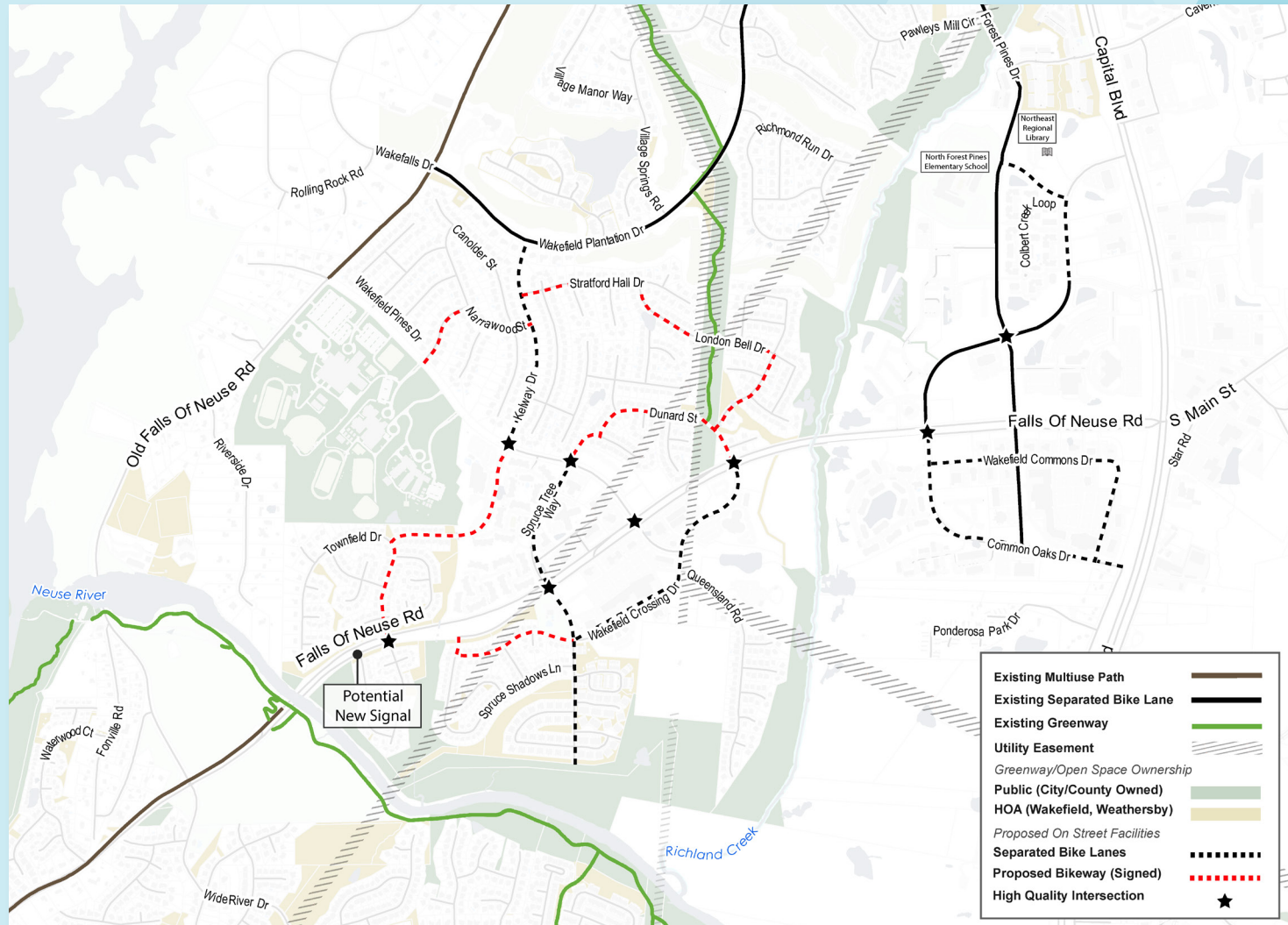


FIGURE 9.
PROPOSED BIKEWAY CONNECTIONS

Biking in Wakefield

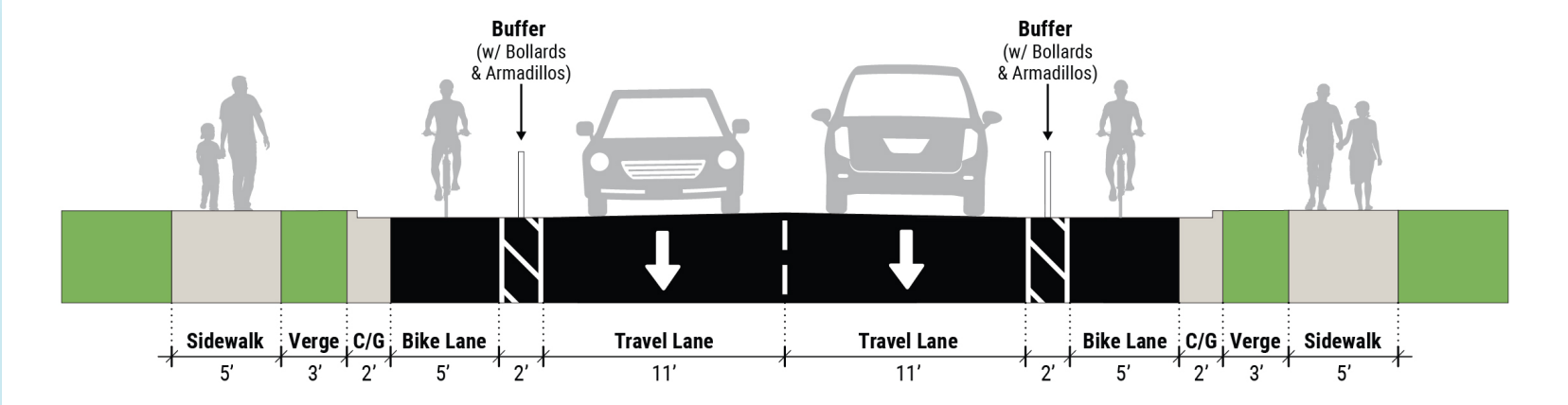
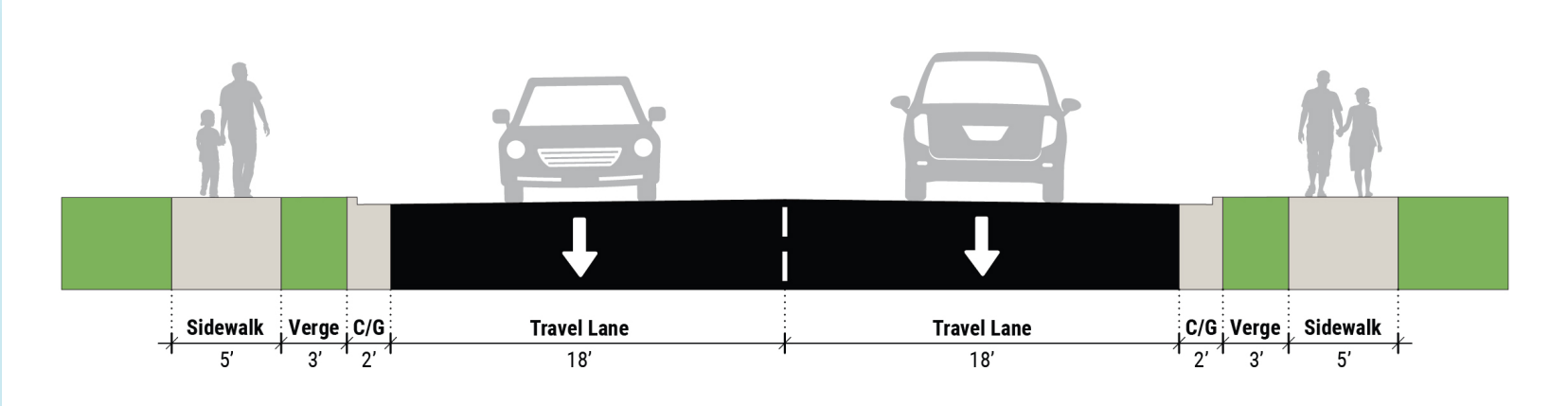



FIGURE 10. COMMON OAKS DRIVE SECTION

Biking in Wakefield



FIGURE 12. FALLS OF NEUSE ROAD SIDEPATH



These recommendations are based on the compilations of comments and survey results from residents and stakeholders within the study area.

In addition, the project team analyzed area-wide issues and opportunities for transportation, greenways, land cover, stormwater, and environmental resources over the course of six months in 2021. The Wakefield Small Area Study final report documents the public engagement results, the technical analysis, and additional information about the study recommendations and implementation.



Raleigh Planning

