

PLANNING AND
DEVELOPMENT

WAKE BRT: WESTERN BLVD. CORRIDOR STUDY + CP-10-21

Public Hearing
April 5, 2022



Raleigh



Other Western Blvd. BRT Projects

- Transit Overlay District mapping (on-going; COW – April 21)
- BRT Design Phase (on-going; late summer updates)
- Upcoming Station Area Planning (to start this year)

Study Area



Potential BRT Station



Western Blvd Corridor
Study Area Boundary

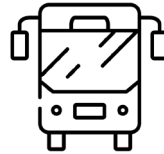


The Corridor Study scope includes:



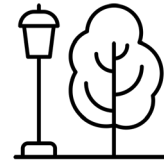
LAND USE + MARKET ANALYSIS

- 'Development potential'
- *Consultant-led*
- *REPORT released*



LPA ANALYSIS

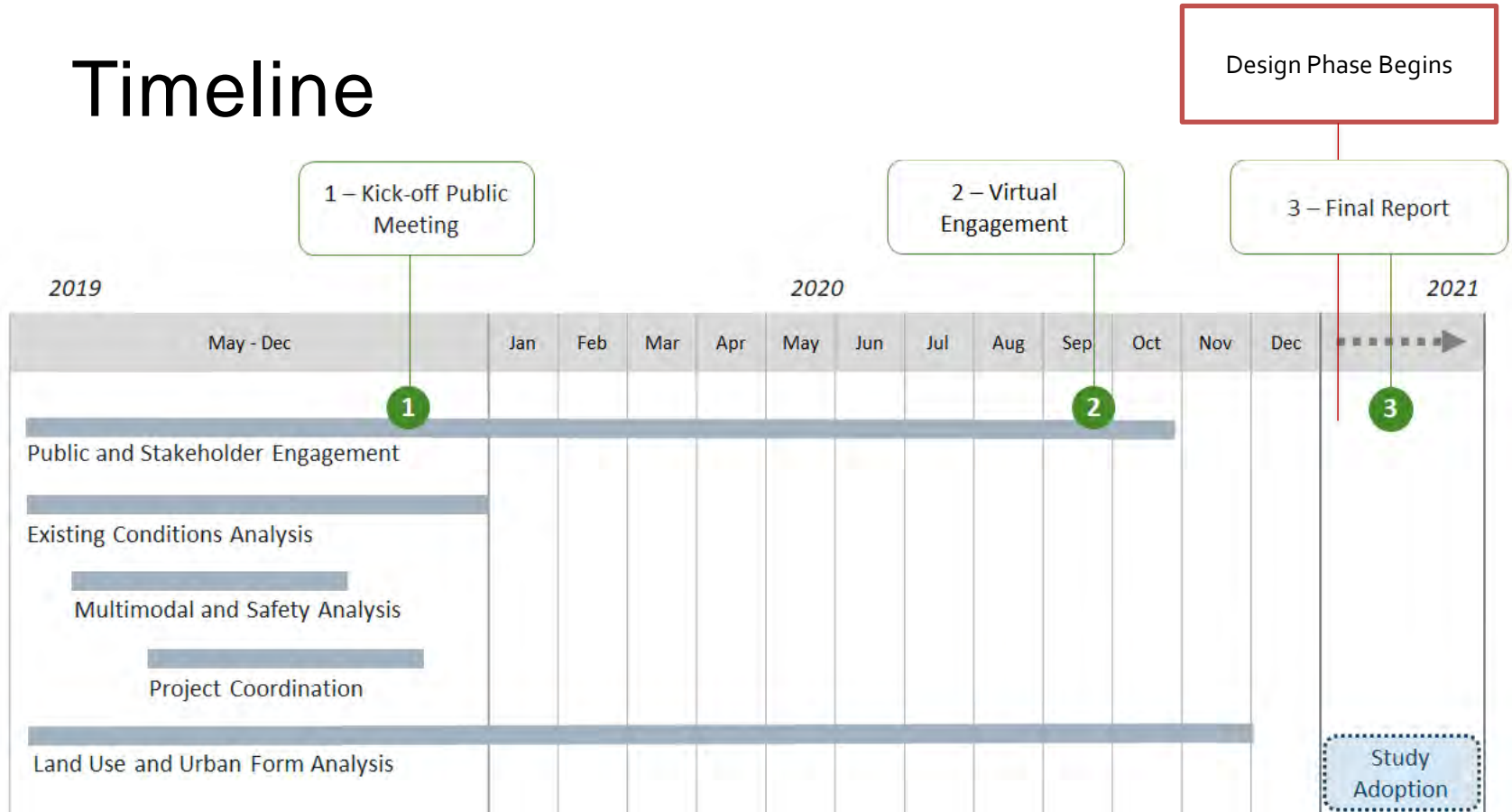
- 'BRT route selection'
- *Consultant-led*
- *Endorsed and adopted August 2020*



URBAN DESIGN OPPORTUNITIES

- 'Physical improvements'
- *Led by Urban Design Center*
- *REPORT released*

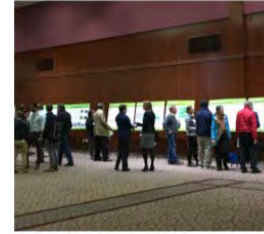
Timeline



Public Engagement

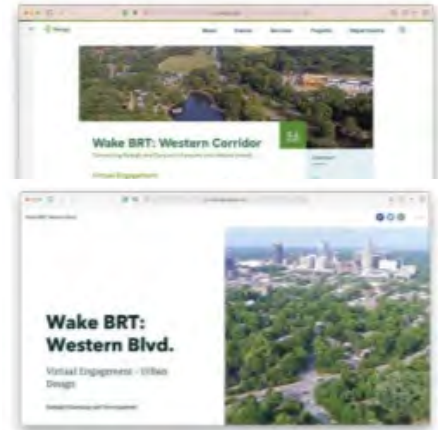
- **Kick-off event – Nov. 2019**

- Followed by: **11** pop-ups, multiple neighborhood and stakeholder meetings



COVID

- **2** virtual open houses, **4** virtual Q&A's, multiple stakeholder meetings
- **Boards and Commissions**
Appearance Commission, Parks Recreation and Greenway Advisory Board, Bicycle and Pedestrian Advisory Commission
- **2** 'Ask a Planner' events on Oct. 20 and Nov. 3, 2021



Phase One: Kickoff Meeting

157

attendees

429

survey participants

Phase One: Pop Up Events

11

pop up events

344

attendees

Phase Two: Virtual Engagement

2075

site visits

96

survey participants

46

project subscriptions

760

questions + comments

Phase Three: Virtual Engagement

416

site visits

59

participants

424

survey responses

72%

positive sentiment

Public Priorities

- Pedestrian and bicycle connectivity
- Intersection safety
- Transit-oriented development
- Sustainable design

"This is a very environmentally sensitive area. I'd be interested to see what the staff thinks it could do to innovate here and reduce our impact as we extend Western Blvd."

"Great bones for TOD, but needs a spark"

"This entire corner and shopping area needs significant upgrade and redevelopment."

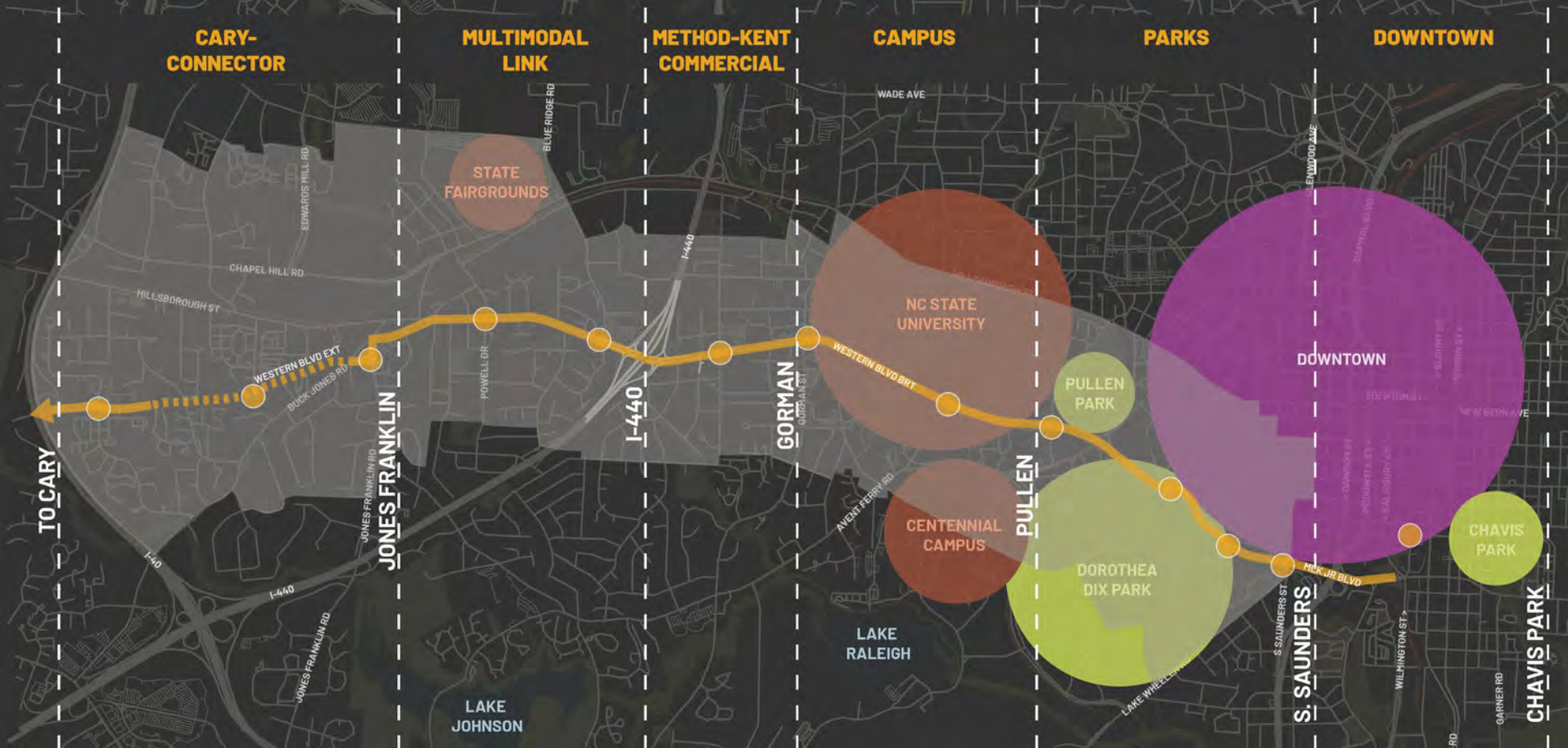
"It would be nice to have more ways to walk, bike or get around campus in a safer way than crossing Western Boulevard."

"Crossing Western here is incredibly dangerous. Please provide a safe crossing."

KEY:

- BIKE/PED SAFETY
- DEVELOPMENT
- STREET CONNECTIONS
- ENVIRONMENT
- BRT ROUTE

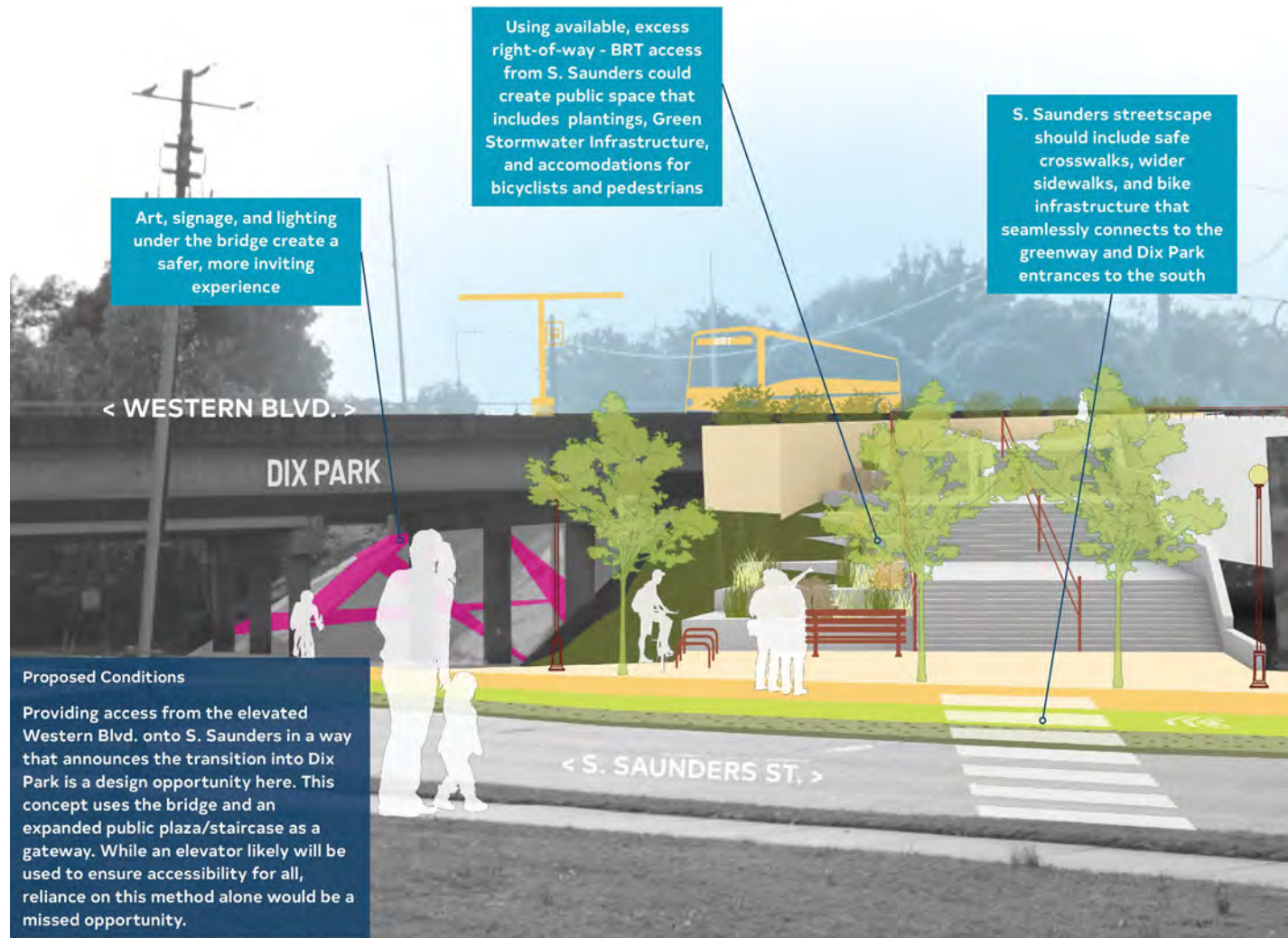
Study Organization



Study Themes + Recommendations



PARKS S.Saunders Bridge



Parks

P5 - Pullen Road

Proposed Conditions

A redesigned bridge and more compact interchange would help bring all users from Western Blvd. up onto Pullen Rd. more smoothly. A more compact interchange could provide opportunity to expand park space and create a better experience for park, university, and transit users.



The Atlanta BeltLine connects people throughout the city via trails and walkways that weave between parks, neighborhoods, and restaurants. Source: Discover Atlanta

Parks

P4 - Ashe Avenue

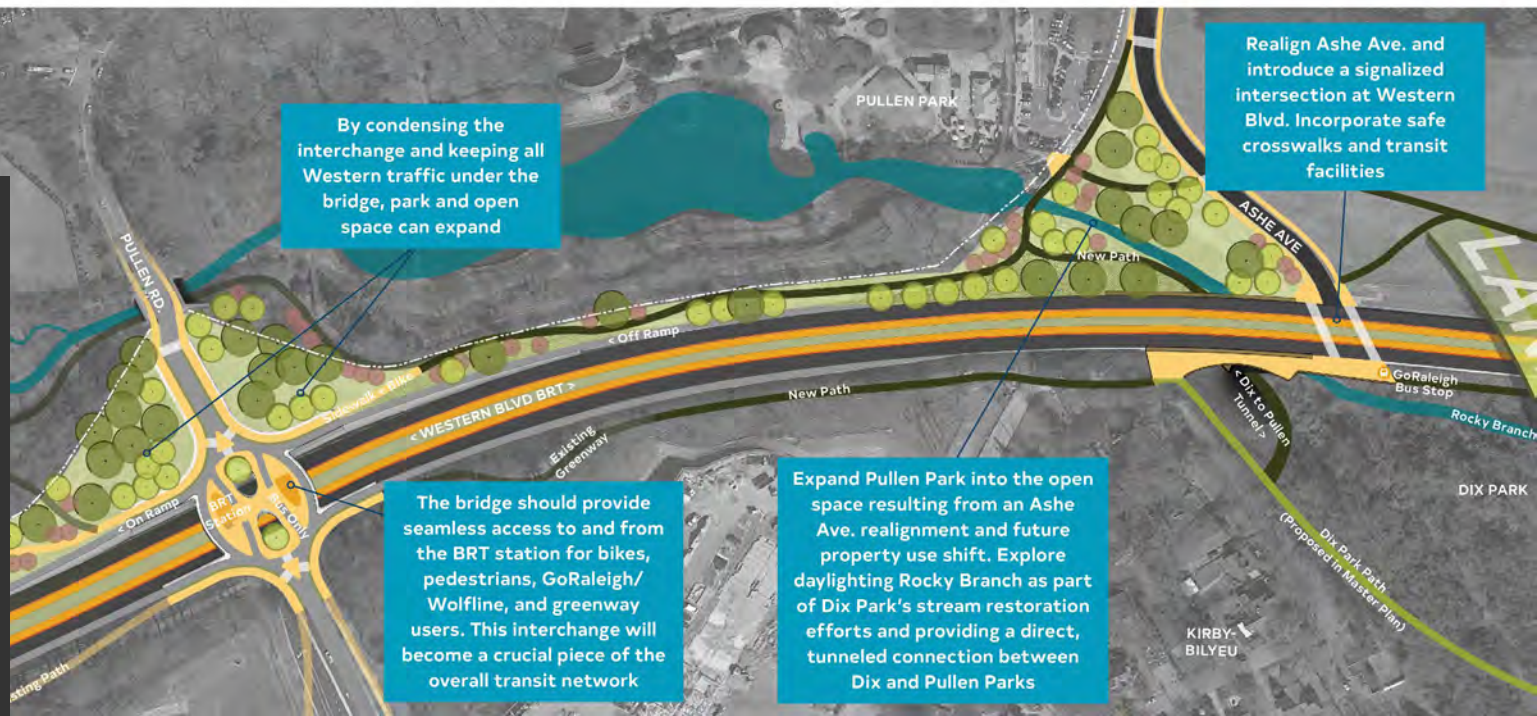
Proposed Conditions

A redesign of this area should correct the alignment of Ashe Ave., provide connections to the future land bridge envisioned in the Dix Park Master Plan, and continue restoration efforts of Rocky Branch. The area should connect seamlessly to Dix Park and Pullen Park, acting as a gateway between the two amenities.



Before remediation efforts for Little Sugar Creek in the waterway was void of life and inaccessible. Now by greenway with flourishing banks. Source: Char

PARKS Pullen Rd. and Ashe Ave.





The greenway would follow the stream corridor and connect Hillsborough St. with Lake Johnson.

New bike/ped path to connect surrounding natural areas with corridor

A new intersection will connect existing and future development to the corridor safely

City-owned property could become an expanded plaza or improved public amenity area that showcases the ecological systems at play

Streets in hot pink are proposed streets to add to the Street Plan

Bicycle and pedestrian facilities along the Western Blvd. extension will be further analyzed as part of the BRT design

Open space could be used as infrastructure to protect sensitive ecologies. Strategies include rain gardens, stream stabilization, constructed wetlands, etc.

CARY CONNECTOR - Wolfwood Dr.

WOLFWOOD DR

Proposed separated bikeway

< WESTERN BLVD BRT EXTENSION >

Proposed multiple

OAKDALE

WAYCROSS ST

BUCK JONES RD

Green TOD Concept



Thornton Place, Seattle, WA



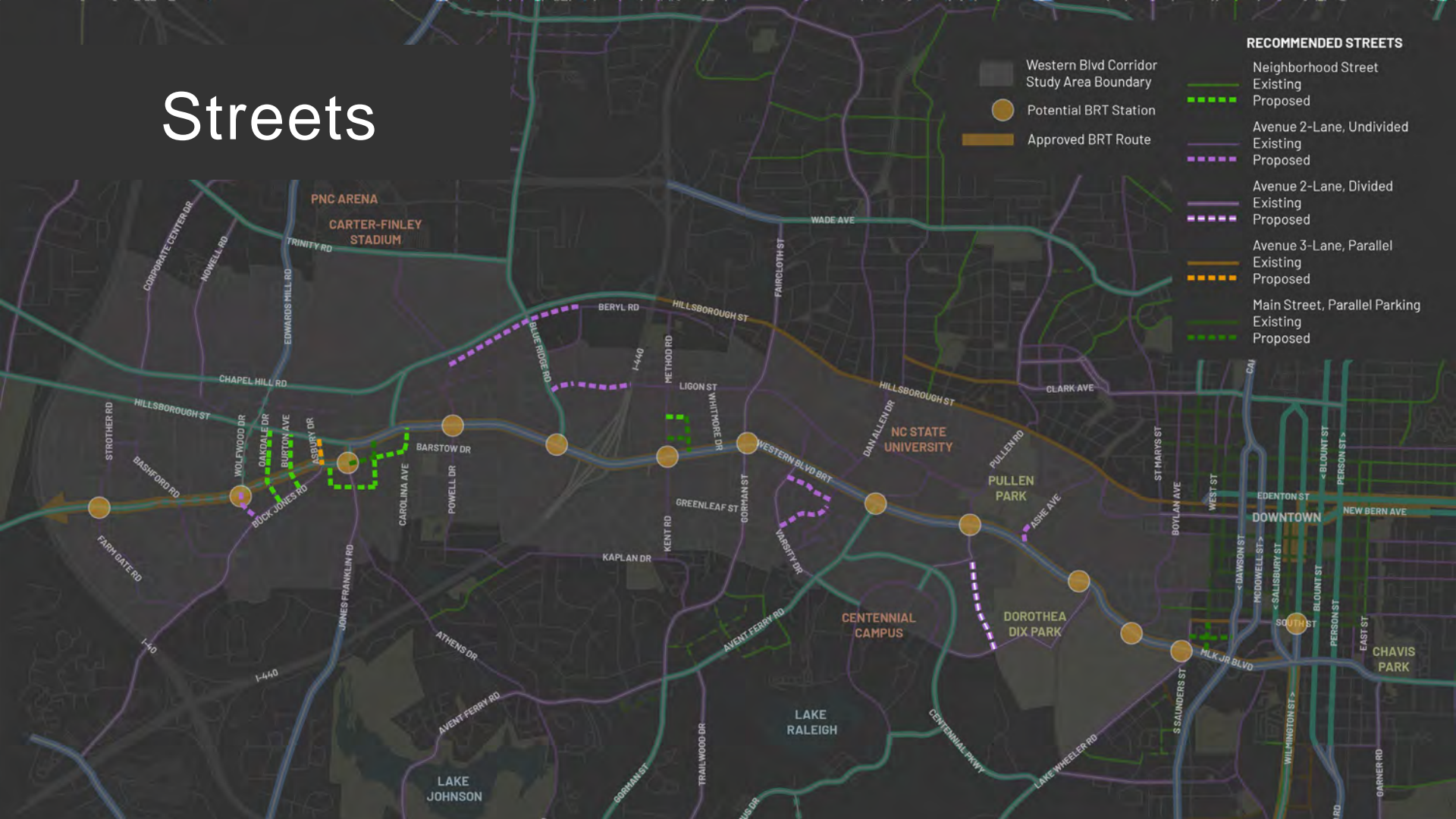
This bioretention facility took the place of an asphalt parking lot that routinely flooded. The install was part of Portland's Green Street Program. Source: Streetsblog San Francisco



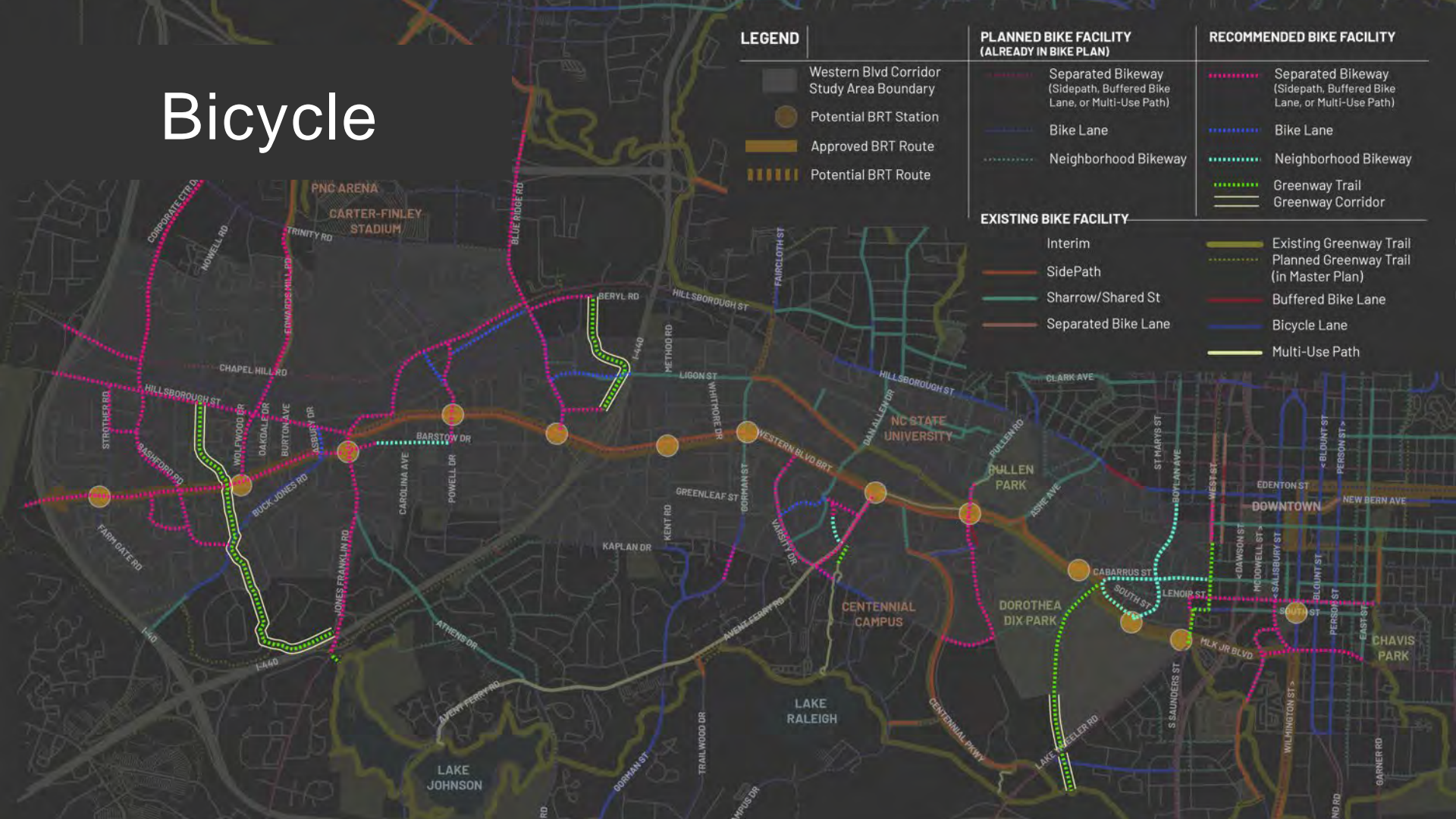
← Corridor-wide Recommendations →



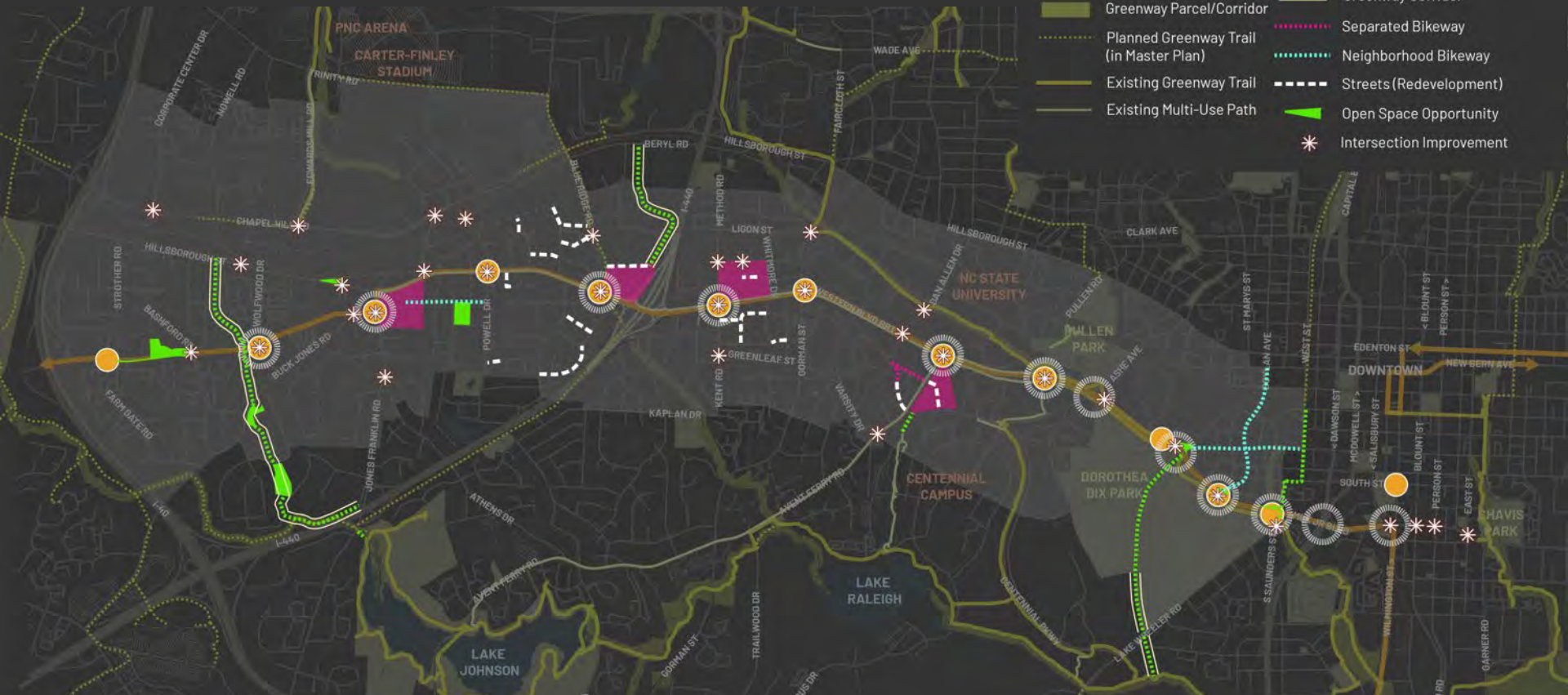
Streets



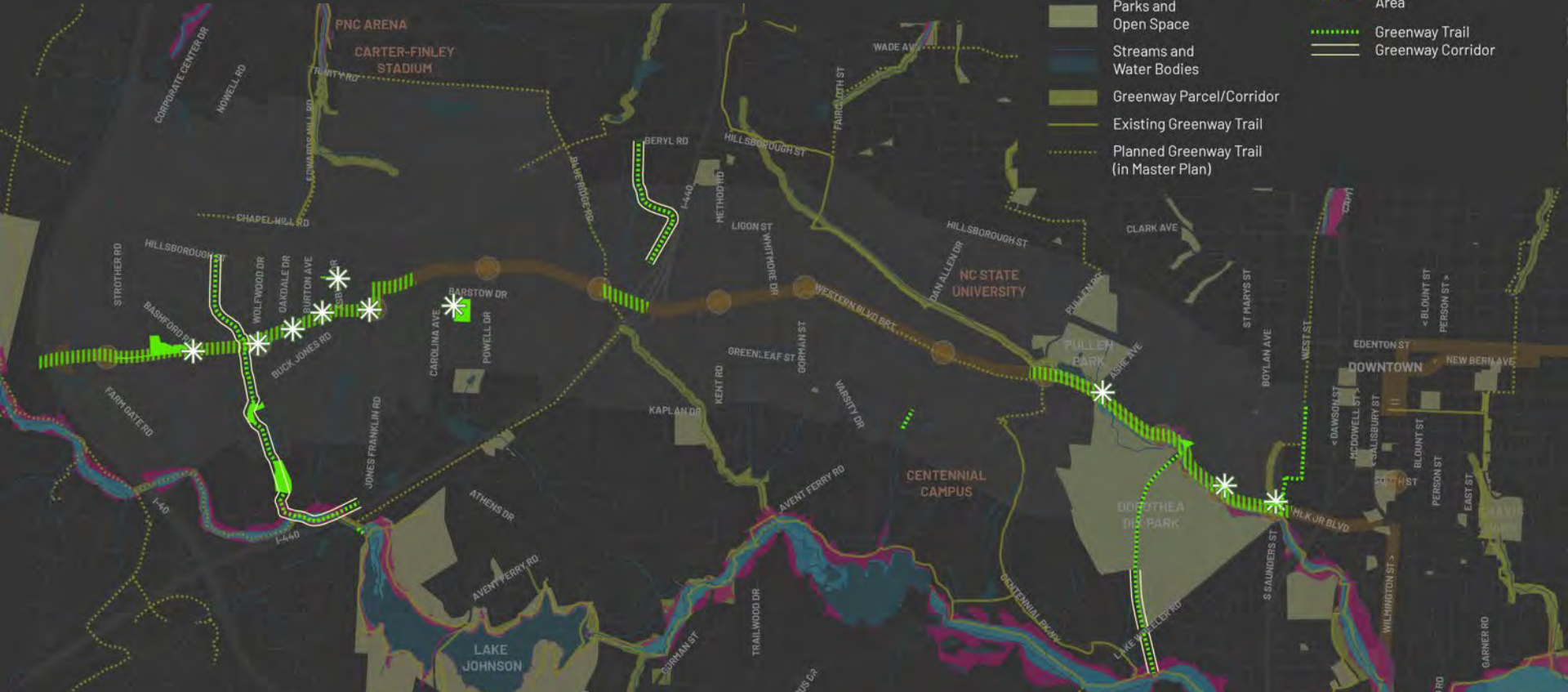
Bicycle



Area-Specific Guidance



Environmental



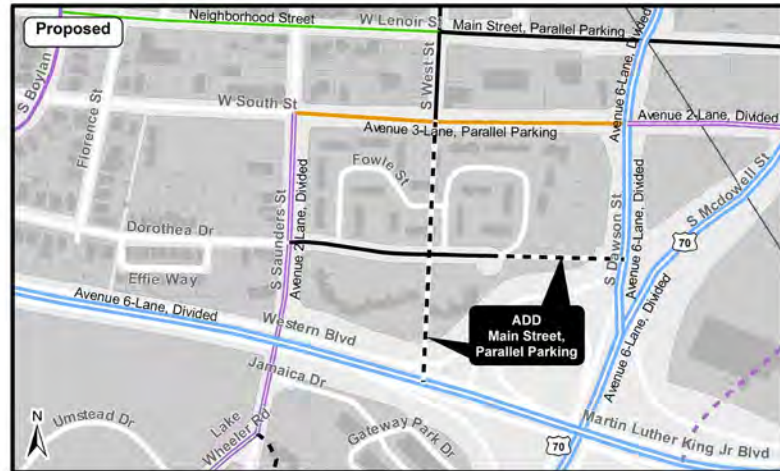
Study Recommendations

- Implementation Plan Matrix of Capital Projects
- Action Plan Matrix of follow-up items
- CP-10-21 Comprehensive Plan Amendments
 - 10A – Area Specific and Corridor wide Policies and Actions
 - 10B – Area Plan Locations
 - 10C – Street Plan Map Amendment
 - 10D – Planned Bicycle Facilities Map Amendment

Street Plan Amendments

- Area between S.Dawson/S. McDowell St. and S.Saunders St. (Heritage Park)

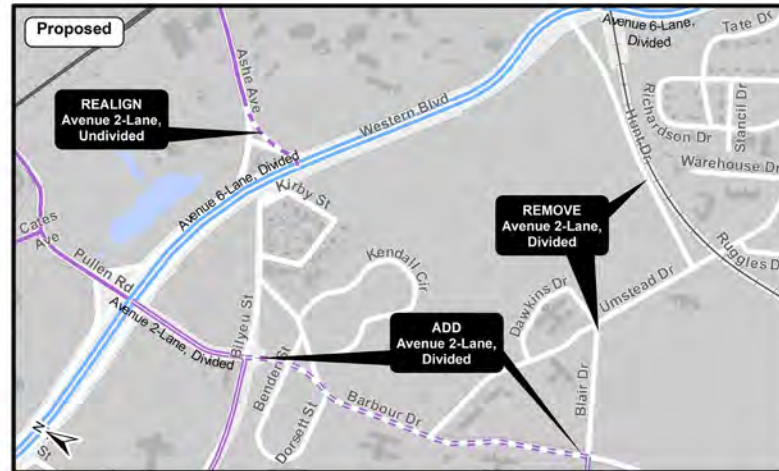
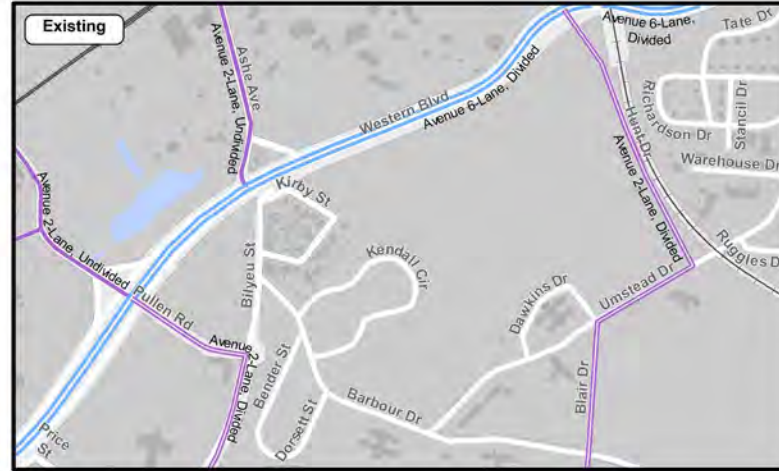
Proposal to Amend the Street Plan



Street Plan Amendments

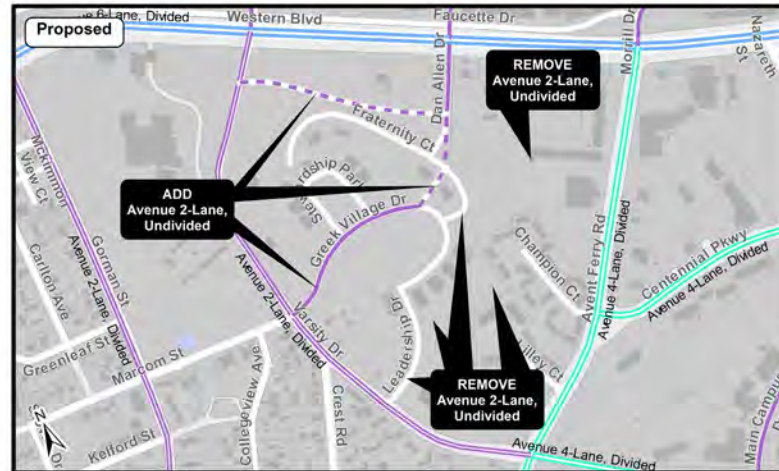
- Realign Ashe Ave.
- Remove Blair Dr. and Hunt Dr. designations
- New street to connect Blair Dr. to Pullen Rd.

Proposal to Amend the Street Plan



- New streets and removal of streets to better align with NCSU's plans

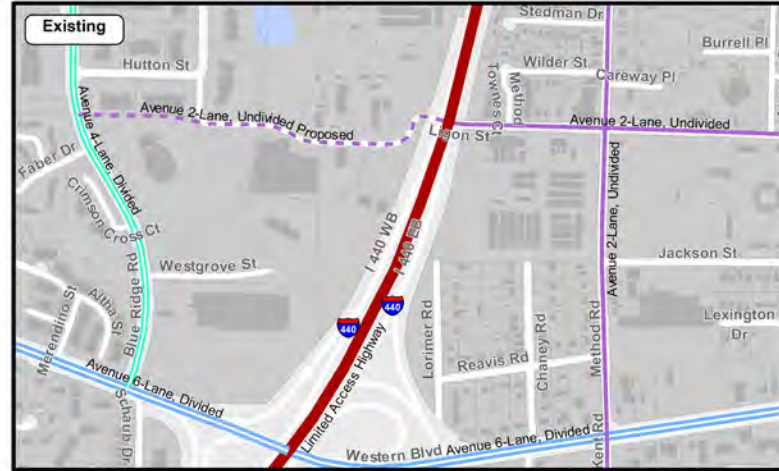
- New streets and removal of streets to better align with NCSU's plans



Street Plan Amendments

- Realign Ligon Street
- Create street grid at existing Food Lion site to promote TOD

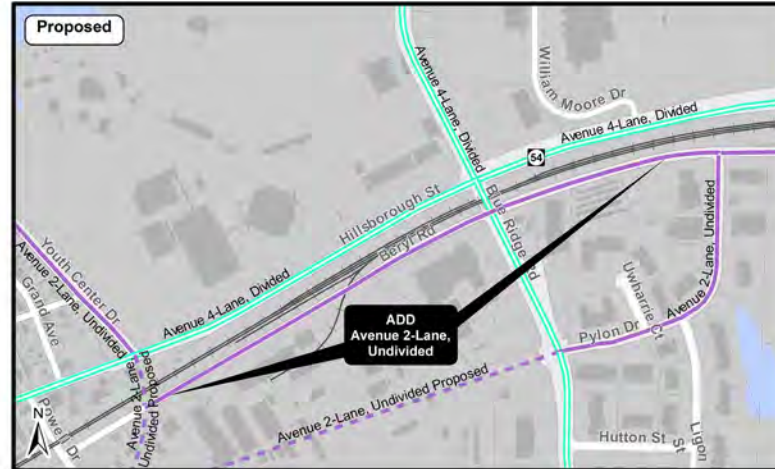
Proposal to Amend the Street Plan



Street Plan Amendments

- Update Beryl Rd. as Avenue 2-Lane, Undivided

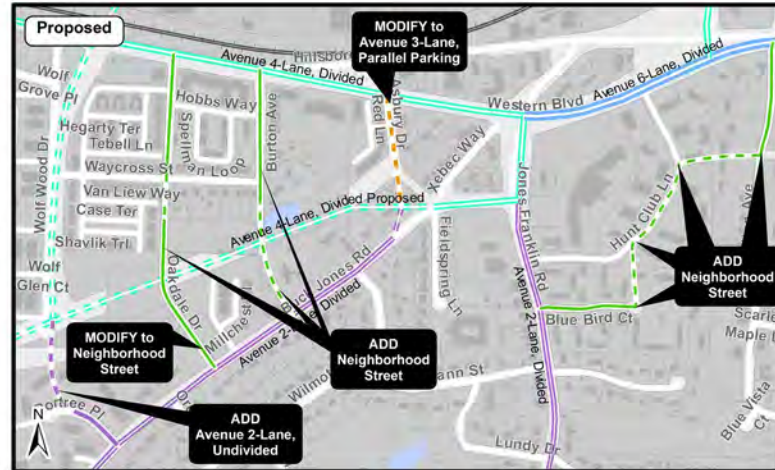
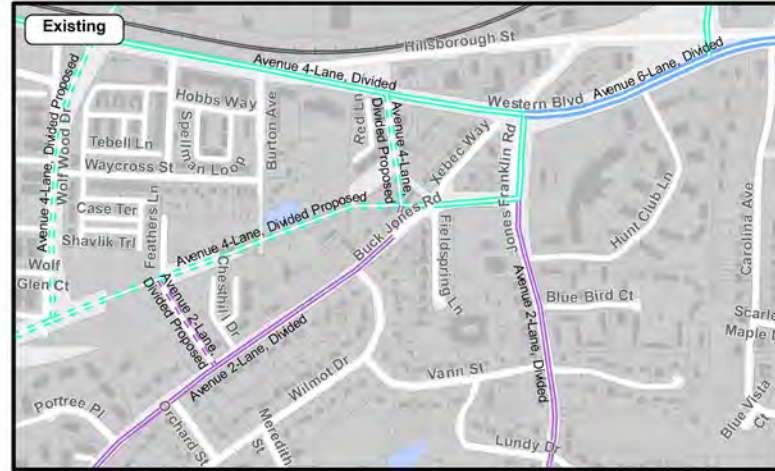
Proposal to Amend the Street Plan



Street Plan Amendments

- Neighborhood streets
 - Burton Av.
 - Oakdale Dr.
 - Blue Bird/Hunt Drive
- Remove Fieldspring Lane + Plaza West connections
- 2 Lane Undivided Wolfwood Dr.

Proposal to Amend the Street Plan



Planning Commission Recommendation

- Approve (6-2 vote) the Western Blvd. study and CP-10-21 as amended

Questions?

