

**Ordinance: 805ZC654**  
**Effective: November 16, 2010**

**Z-22-10 General Use – Strickland Road and Leesville Road-** located south of Strickland Road, southeast quadrant of its intersection with old Leesville Road being Wake County PINs 0788-14-3748 and PIN 0788-14-1859. Approximately 3.34 acres rezoned from Residential-4 to Residential Business General Use and Residential-6 General Use as follows:

**RESIDENTIAL — BUSINESS**

BEGINNING AT THE SOUTHEAST INTERSECTION OF STRICKLAND ROAD AND OLD LEESVILLE ROAD, THE NORTHWEST CORNER OF EDNA SAINTSING DILLARD PROPERTY; THENCE WITH THE NORTH LINE OF EDNA SAINTSING DILLARD PROPERTY, THE SOUTHERN RIGHT OF WAY LINE OF STRICKLAND ROAD THE FOLLOWING THREE (3) CALLS: 1. S60°11'45"E A DISTANCE OF 168.90 FEET, 2. S62°04'48"E A DISTANCE OF 69.23 FEET, ALONG A CURVE CURVING TO THE LEFT HAVING A RADIUS OF 1908.15 FEET AND AN ARC OF 147.20 FEET TO THE NORTHEAST CORNER OF EDNA SAINTSING DILLARD, THE NORTHWEST CORNER OF ANNETTE F. EDWARDS AND KIMBERLY CROWDER BLACK; THENCE WITH THE WEST LINE OF ANNETTE F. EDWARDS AND KIMBERLY CROWDER BLACK PROPERTY S13°51'21"W A DISTANCE OF 157.96 FEET; THENCE A NEW ZONING LINE THROUGH THE PROPERTY OF EDNA SAINTSING DILLARD THE FOLLOWING TWO (2) CALLS, 1. S89°55'02"W A DISTANCE OF 271.98 FEET, 2. N 71°51'18"W A DISTANCE OF 126.0 FEET TO A POINT IN THE EAST RIGHT OF WAY LINE OF OLD LEESVILLE ROAD; THENCE WITH THE EAST RIGHT OF WAY LINE OF OLD LEESVILLE ROAD, THE WEST LINE OF EDNA SAINTSING DILLARD THE FOLLOWING TWO (2) CALLS, 1. N18°19'51"E A DISTANCE OF 161.51 FEET, 2. ALONG A CURVE CURVING TO THE LEFT HAVING A RADIUS OF 3,249.57 FEET AND AN ARC OF 146.79 FEET TO THE POINT AND PLACE OF BEGINNING CONTAINING 2.11 ACRES, ACCORDING TO A SURVEY ENTITLED PROPERTY OF EDNA SAINTSING DILLARD BY JOHN Y. PHELPS JR. PLS-1319 DATED APRIL 14, 2010

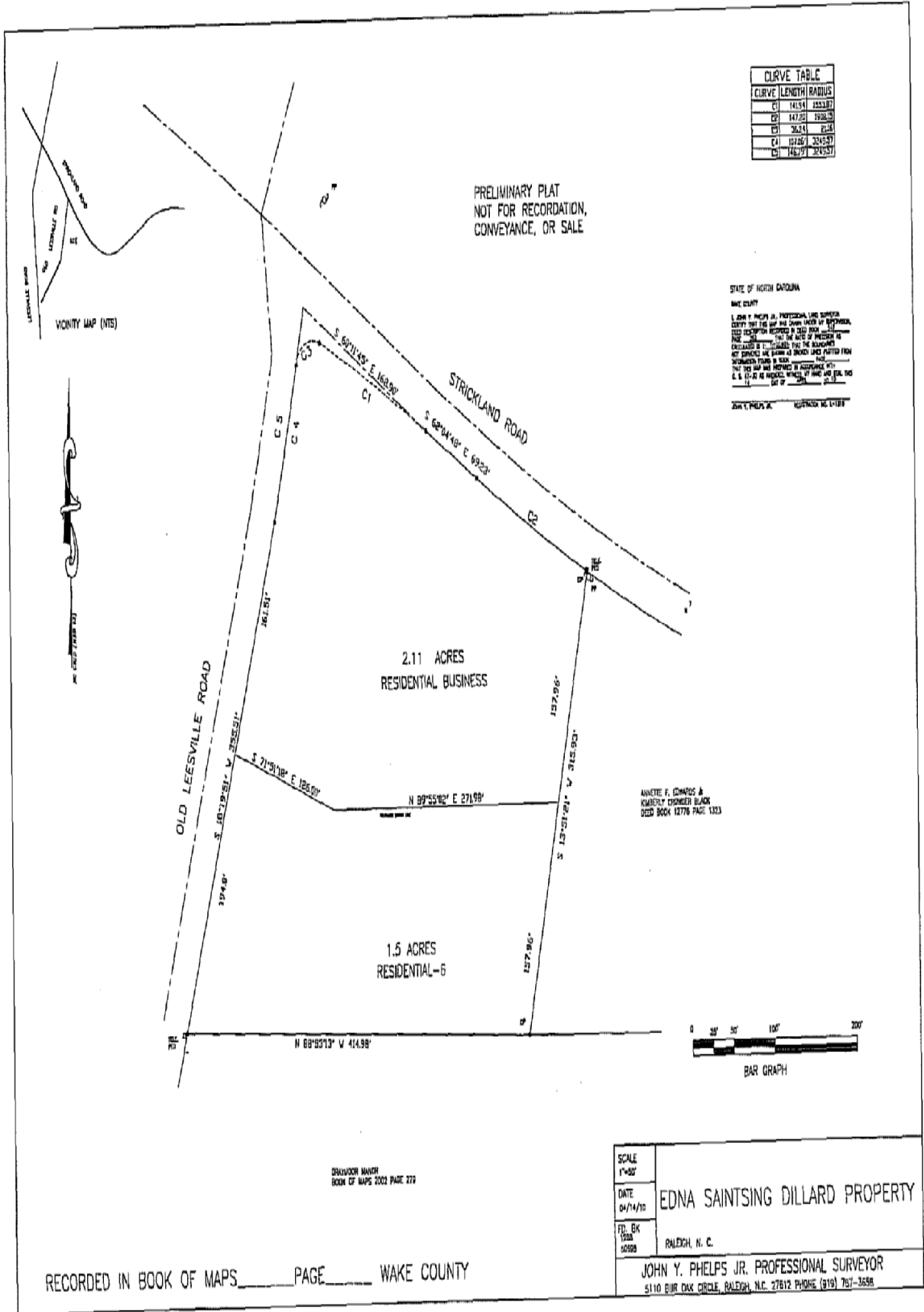
**RESIDENTIAL-6**

BEGINNING AT A POINT IN THE EAST RIGHT OF WAY LINE OF OLD LEESVILLE ROAD SAID POINT BEING 308.30 FEET FROM THE POINT OF INTERSECTION OF THE EAST RIGHT OF WAY LINE OF OLD LEESVILLE ROAD WITH THE SOUTH RIGHT OF WAY LINE OF STRICKLAND ROAD; THENCE A NEW ZONING LINE THROUGH THE PROPERTY OF EDNA SAINTSING DILLARD THE FOLLOWING TWO (2) CALLS, 1. S 71°51'18" E A DISTANCE OF 126.0 FEET, 2. N 89°55'02" E A DISTANCE OF 271.98 TO A POINT IN THE WEST PROPERTY LINE OF ANNETTE F. EDWARDS AND KIMBERLY CROWDER BLACK, THE EAST PROPERTY LINE OF EDNA SAINTSING DILLARD; THENCE WITH THE WEST PROPERTY LINE OF

**Ordinance (2010) 805 ZC 654**  
**November 16, 2010**

ANNETTE F. EDWARDS AND KIMBERLY CROWDER BLACK S 13° 51 '21  
“W A DISTANCE OF 157.96' TO A POINT IN THE NORTH PROPERTY LINE  
OF DRAYMOOR MANOR, THE SOUTH EAST CORNER OF EDNA  
SAINTSING DILLARD PROPERTY; THENCE WITH THE NORTH  
PROPERTY LINE OF DRAYMOOR MANOR N 88° 53'13” W A DISTANCE  
OF 414.98' TO A POINT IN THE EAST RIGHT OF WAY LINE OF OLD  
LEESVILLE ROAD, THE SOUTHWEST CORNER OF EDNA SAINTSING  
DILLARD; THENCE WITH THE EAST RIGHT OF WAY LINE OF OLD  
LEESVILLE ROAD N 18° 19'51” E A DISTANCE OF 194.0' TO THE POINT  
AND PLACE OF BEGINNING, CONTAINING 1.5 ACRES ACCORDING TO A  
SURVEY ENTITLED PROPERTY OF EDNA SAINTSING DILLARD BY  
JOHN Y. PHELPS JR. PLS-1319 DATED APRIL 14, 2010.

Ordinance (2010) 805 ZC 654  
November 16, 2010



**Ordinance (2010) 805 ZC 654**  
**November 16, 2010**