

Parks, Recreation and
Cultural Resources Department

Chavis / Top Greene / SPHW Situation Assessment and Community Advisory Group Member Selection

City Council November 7, 2023



Raleigh





Presentation Outline

- Project Overview
 - John Chavis Memorial Park Phase 2
 - South Park Heritage Walk implementation
 - John P “Top” Greene Center Improvements
- Situation Assessment and Community Profile Analysis
- Joint Community Advisory Group (CAG) Process Overview
- Proposed Joint CAG membership
- Next Steps



Raleigh

John Chavis Memorial Park Phase 2

- New aquatic center
 - Indoor / outdoor
 - Recreation / leisure / wellness / competition
- Heritage Plaza
- Historic interpretive displays



South Park Heritage Walk and John “Top” Greene Center Improvements

- South Park Heritage Walk implementation
- John Top Greene Center renovation and expansion



SOUTH PARK HERITAGE
WALK PROJECT
educate, preserve, memorialize



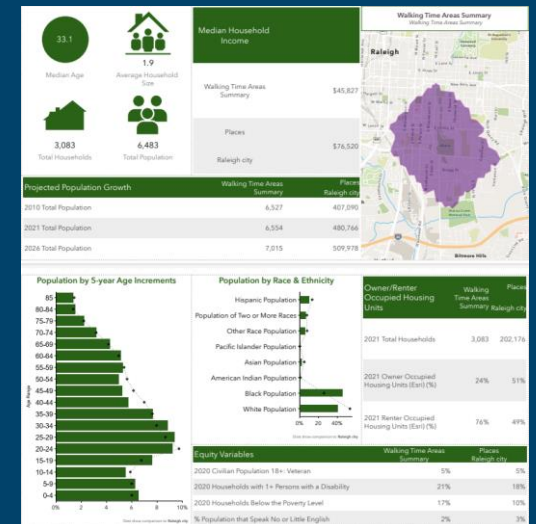
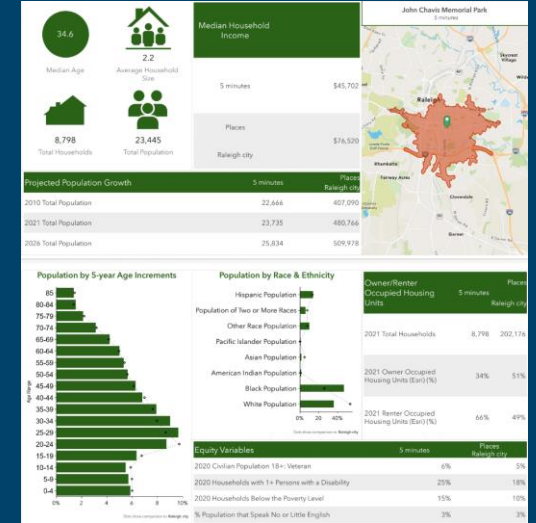
Situation Assessments

Community Framework

- 5-Minute Drive Demographics
- 10-Minute Walk Demographics

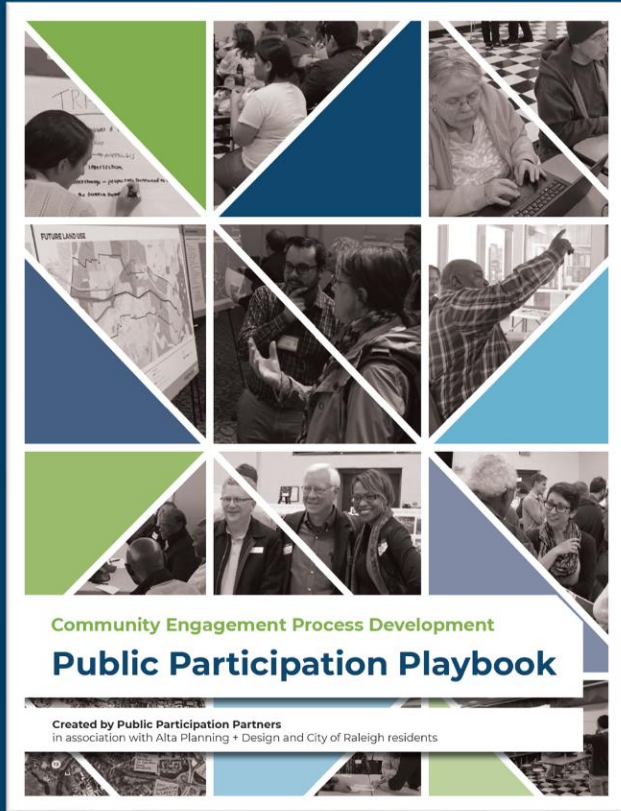
Engagement Process

- Level of Participation
- Community Stakeholders
- Community Advisory Group





CAG Process



Establishing a CAG

- Demographics
- Purpose & Responsibilities
- Community Representatives
- ***A community advisory group cannot substitute for broader public participation***



Raleigh

Joint CAG Recruitment and Outreach (July-September)

- Signage (Bilingual)
- Posters & information cards (Bilingual) to:
 - John Chavis Memorial Park Community Center
 - John P “Top” Greene Community Center
 - Raleigh Municipal Building
 - Biltmore Hills Community Center
 - Worthdale Community Center
 - Sanderford Road Center
 - Area faith-based facilities
- Project websites
- Social Media announcements
- Raleigh Parks weekly digital newsletter
- Email and phone outreach to area businesses and community stakeholders
 - Daycare facilities
 - Downtown Raleigh Alliance
 - Faith-based facilities
 - HOA’s and apartment management
 - Former Chavis PLG
 - Former CAC leadership
 - Raleigh Youth Council
 - Men of Southeast Raleigh
 - Shaw University
 - Southeast Raleigh Promise
 - SPERNA
 - St. Augustine’s University



Joint CAG Selection Panel

Kara Strang and Jeff Havener (Joint CAG members)
Parks, Recreation and Greenway Advisory Board

Derek Ham (Joint CAG member)
Arts Commission and Public Art Design Board

Wanda Cox-Bailey (Joint CAG member)
Historic Resources and Museum Advisory Board

Carmen Cauthen & Tom Simon
Community Engagement Board



Raleigh

Proposed Joint CAG Membership

Public Members

Angela Carter **
Andrew Dames
Megan Kaufmann
Will Kiley
Dr. Candace Laughinghouse
Dr. Carol Love
Alicia McGill
Keyunda Miller
Patsy Smith Morgan
Ashley Moser
Frances Lonnette Williams **
Rob Wylie **
Cecilia Zuvic **

Board Representatives

Celise Bravo-Taylor (BPAC)
Wanda Cox-Bailey (HRMAB)
Derek Ham (PADB)
Jeff Havener (PRGAB)
Kara Strang (PRGAB)

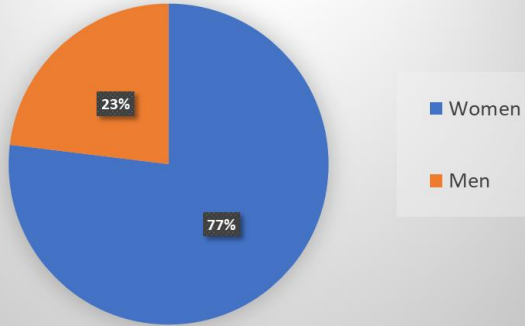
** Former Chavis Public Leadership Group members



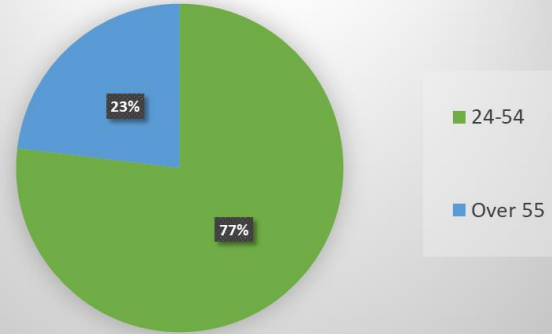
Proposed Joint CAG Membership

Public Members

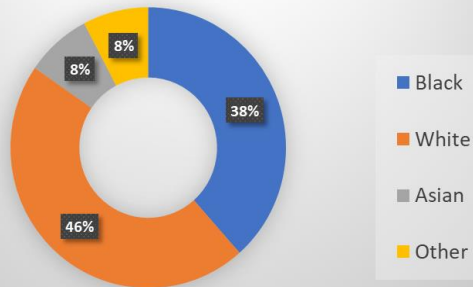
Gender



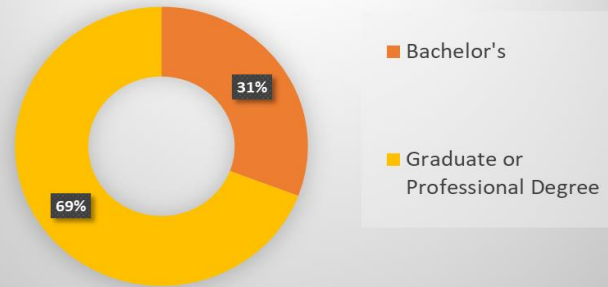
Age



Race



Education





Next Steps

- Nov. 2023 - Engagement consultant contract execution
- Jan. 2024 - Community engagement and Joint CAG kick-off
- Jan. 2024 - Design consultant contract award by Council
- Feb. 2024 - Construction Manager at Risk contract award by Council
- 2024 - Schematic Design to PRGAB and Council



Raleigh

Thank You!