



Bridging the Gap: Advancing Equity in Transportation and Land Use for a Growing Raleigh

Charles T. Brown

Event: City of Raleigh's Transportation
Community Conversation

Date: Wednesday, February 12, 2025

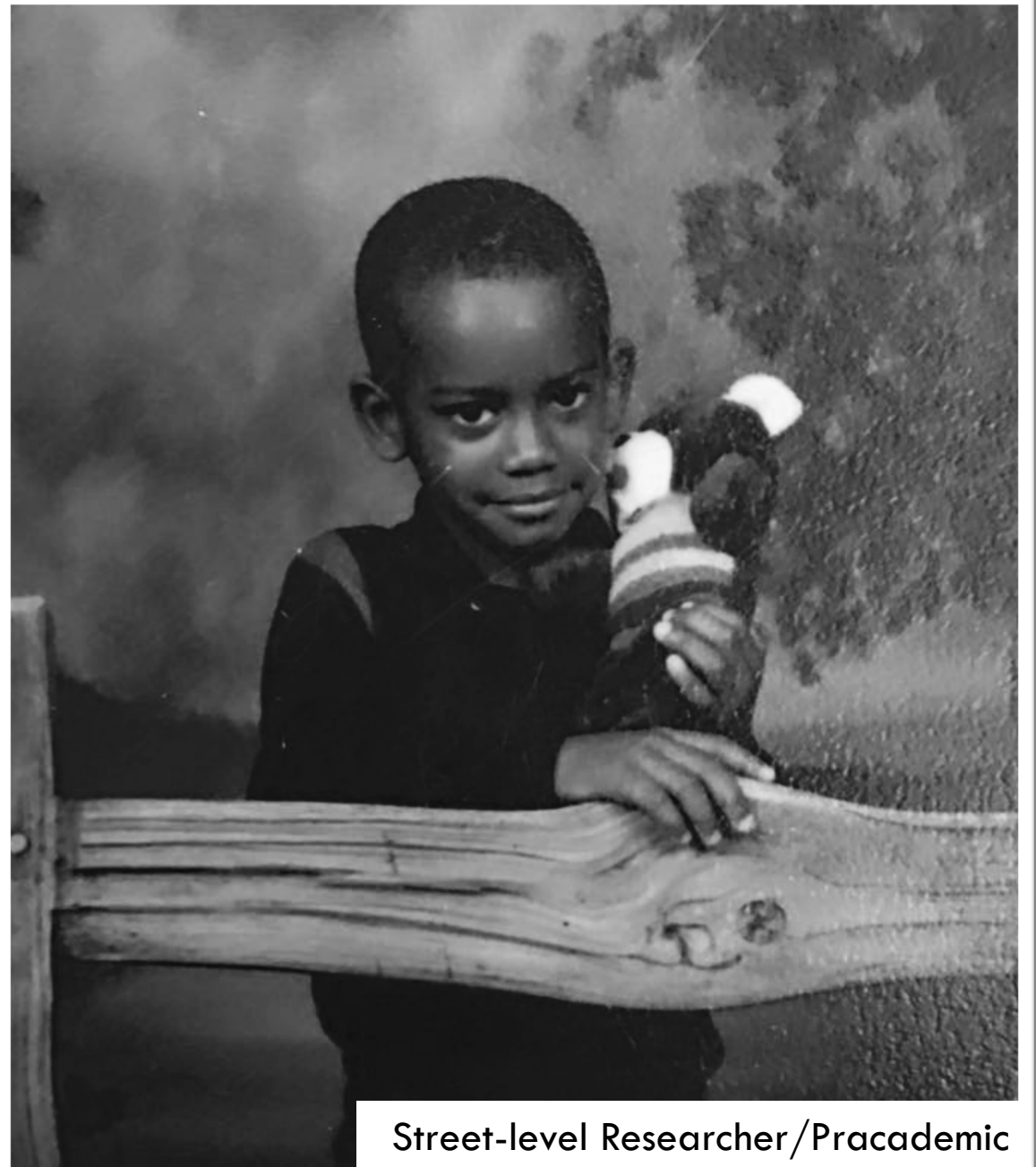
Location: Raleigh, North Carolina



**EQUITABLE
CITIES**



Shuqualak, Mississippi



Street-level Researcher/Pracademic

What is Equity?

- ⑩ Equity means the consistent and systematic treatment of **all individuals** in a fair, just, and impartial manner
- ⑩ Includes **persons with disabilities**, racial/ethnic minorities,, marginalized groups, geographically disadvantaged, economically disadvantaged, and intersectional identities
- ⑩ The goal of equity is to ensure that **everyone** has an equal chance to succeed.



"Equity in transportation is not just a destination but a journey where every community deserves a fair and just pathway to opportunity."

Geographic Disparities

- ⑩ Certain areas may have limited access to reliable public transportation, bike lanes, or pedestrian infrastructure.
- ⑩ This can restrict residents' mobility and limit their access to jobs, education, healthcare, and other essential services.



Disability Access

- ⑩ People with disabilities often face challenges due to insufficient infrastructure.
- ⑩ This includes a lack of accessible transit stops or vehicles, which can hinder their ability to travel independently.



Cost of Transportation

- ⑩ The affordability of transit fares, parking fees, and vehicle ownership can disproportionately affect low-income populations.
- ⑩ The cost of commuting can be a significant burden, limiting the options available to lower-income individuals.



Subsidy Distribution

- ⑩ Inequitable distribution of subsidies can favor higher-income commuters or those with specific types of employment benefits.



Infrastructure Safety

- ⑩ Inadequate infrastructure can pose safety risks, particularly in underserved communities.
- ⑩ This can deter people from walking or cycling.



Personal Safety

- ⑩ Concerns about crime and personal safety in certain areas, especially during nighttime travel, can discourage the use of public transit or active transportation options.
- ⑩ Discrimination and harassment by law enforcement is also a concern.



Cultural and Language Barriers

- ⑩ Immigrants and non-English speakers may face challenges due to language barriers, lack of culturally sensitive outreach, and insufficient multilingual information.



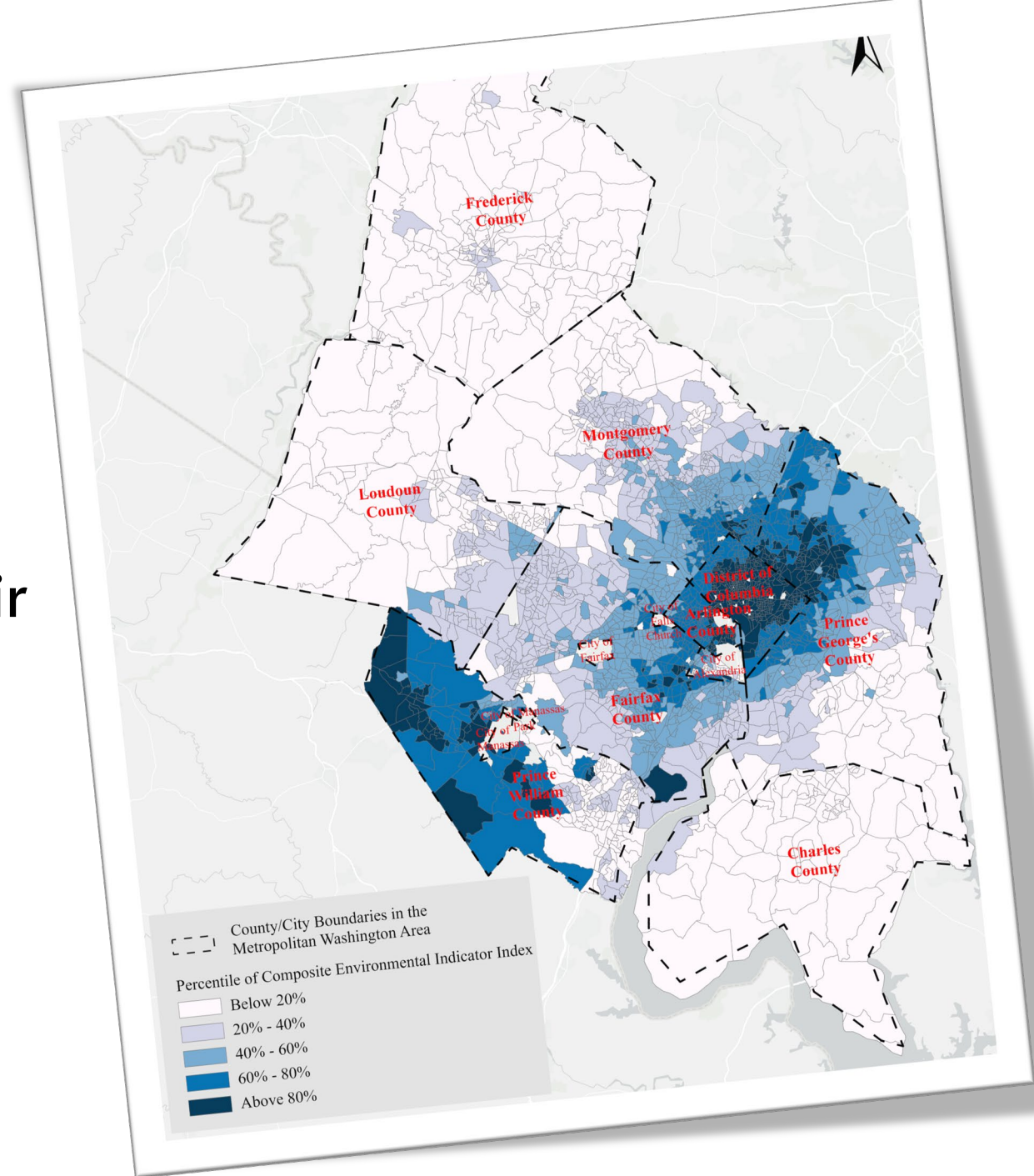
Community Involvement

- ⑩ Historically marginalized communities are often underrepresented in transportation planning and decision-making processes.
- ⑩ This can lead to policies and services that do not adequately address their specific needs and concerns.



Exposure to Pollution

- ⑩ Low-income and minority communities are often situated near highways, industrial areas, or other sources of pollution, leading to higher exposure to air and noise pollution.
- ⑩ This can have significant health impacts and reduce the quality of life.



Climate Resilience

- ⑩ Vulnerable communities may lack the resources and infrastructure to cope with extreme weather events, which can disrupt transportation services and access.
- ⑩ I am a survivor of Hurricanes Katrina (MS) and Sandy (NJ).



Job Accessibility

- ⑩ Limited transportation options can restrict access to job opportunities, especially for low-wage workers who cannot afford to live near employment centers.
- ⑩ This can perpetuate economic disparities and limit upward mobility.

Digital Access

- ⑩ The increasing reliance on digital platforms for ride-sharing, navigation, and real-time transit information can exclude those **without access to the internet** or smartphones, exacerbating disparities in access to transportation options.



Racial Equity Implications



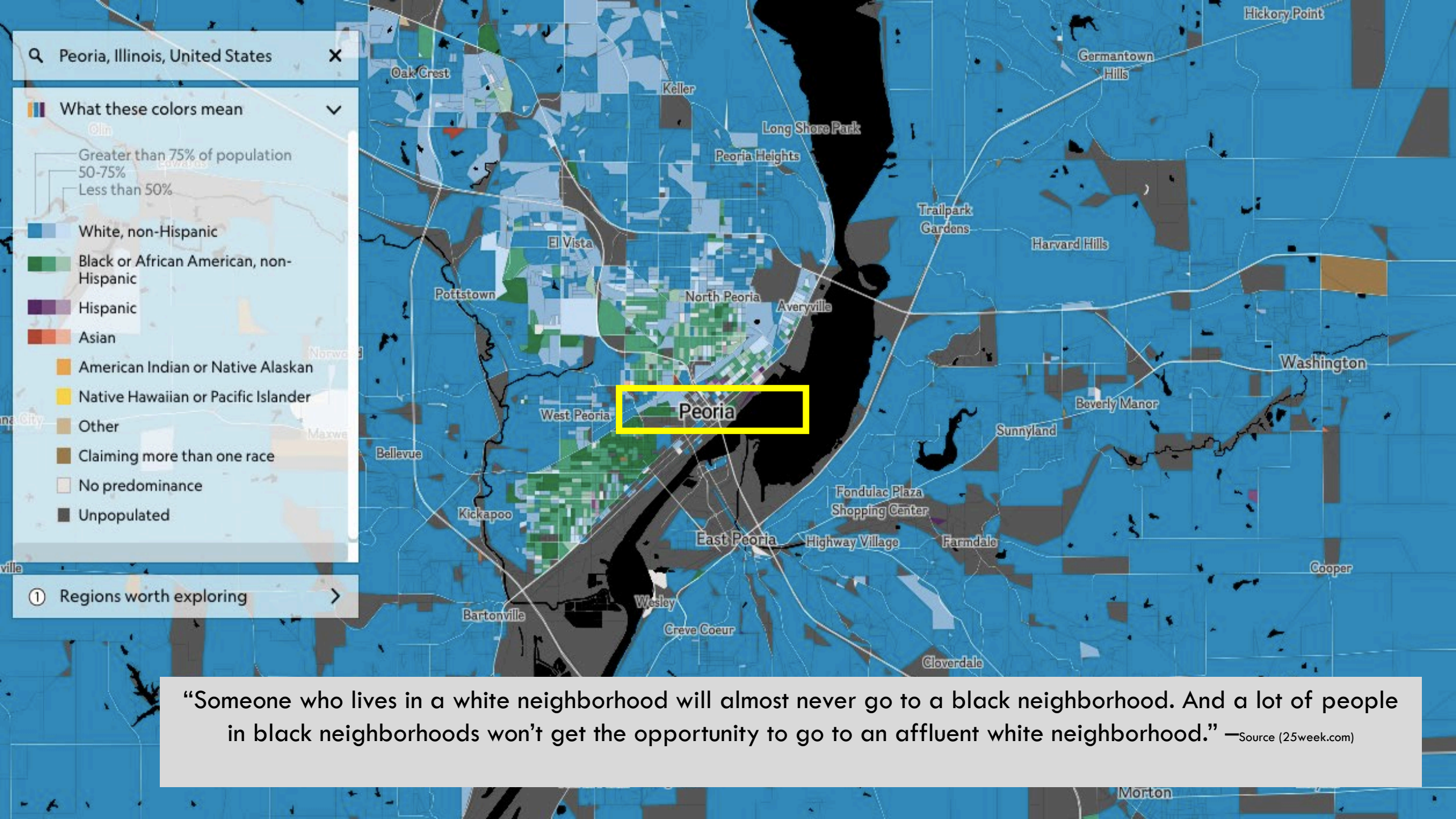
Race



Place



Health



“Someone who lives in a white neighborhood will almost never go to a black neighborhood. And a lot of people in black neighborhoods won’t get the opportunity to go to an affluent white neighborhood.” —Source (25week.com)

Where we live, block by block

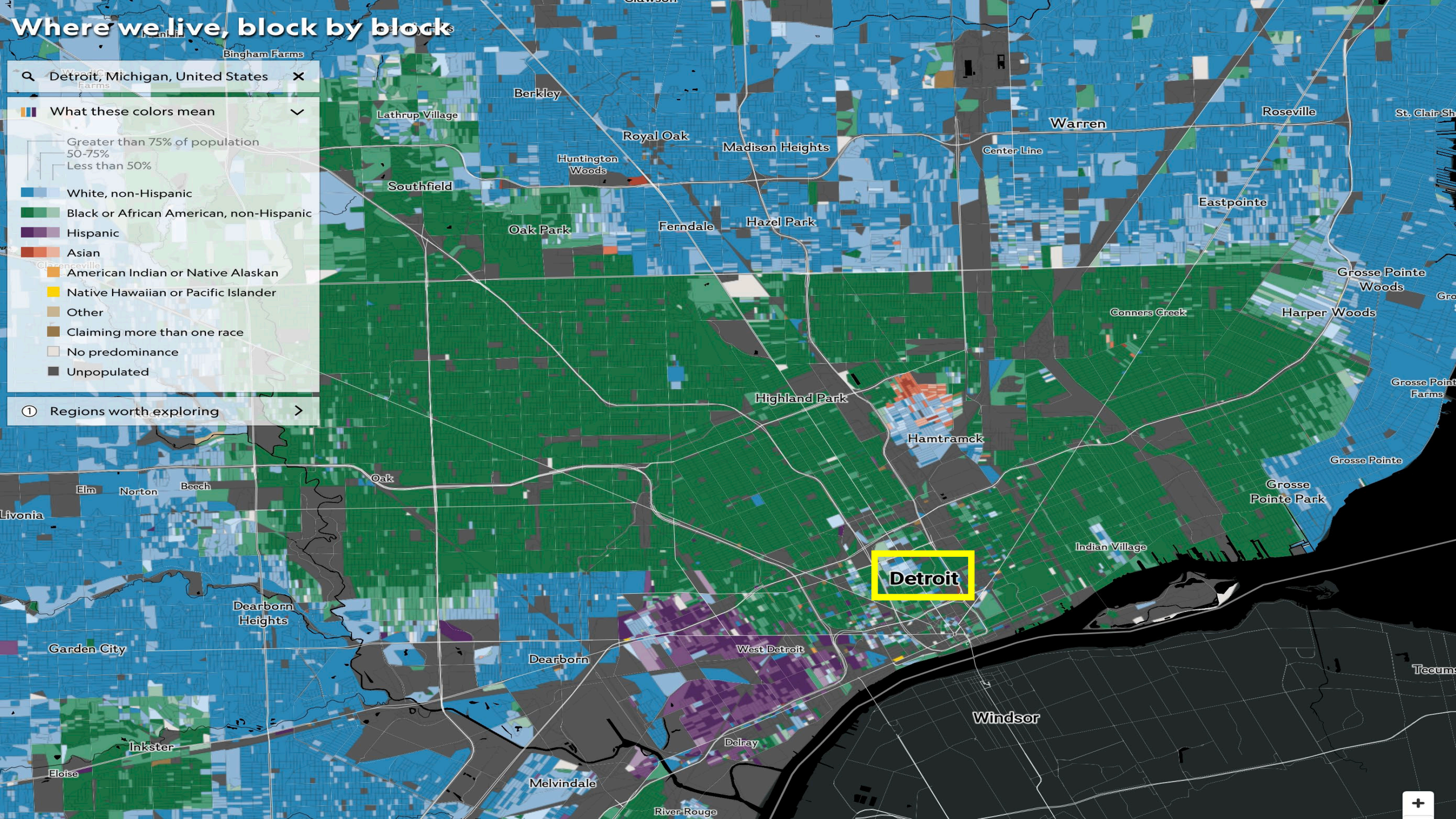
Search: Detroit, Michigan, United States

What these colors mean

- Greater than 75% of population
- 50-75%
- Less than 50%

- White, non-Hispanic
- Black or African American, non-Hispanic
- Hispanic
- Asian
- American Indian or Native Alaskan
- Native Hawaiian or Pacific Islander
- Other
- Claiming more than one race
- No predominance
- Unpopulated

Regions worth exploring



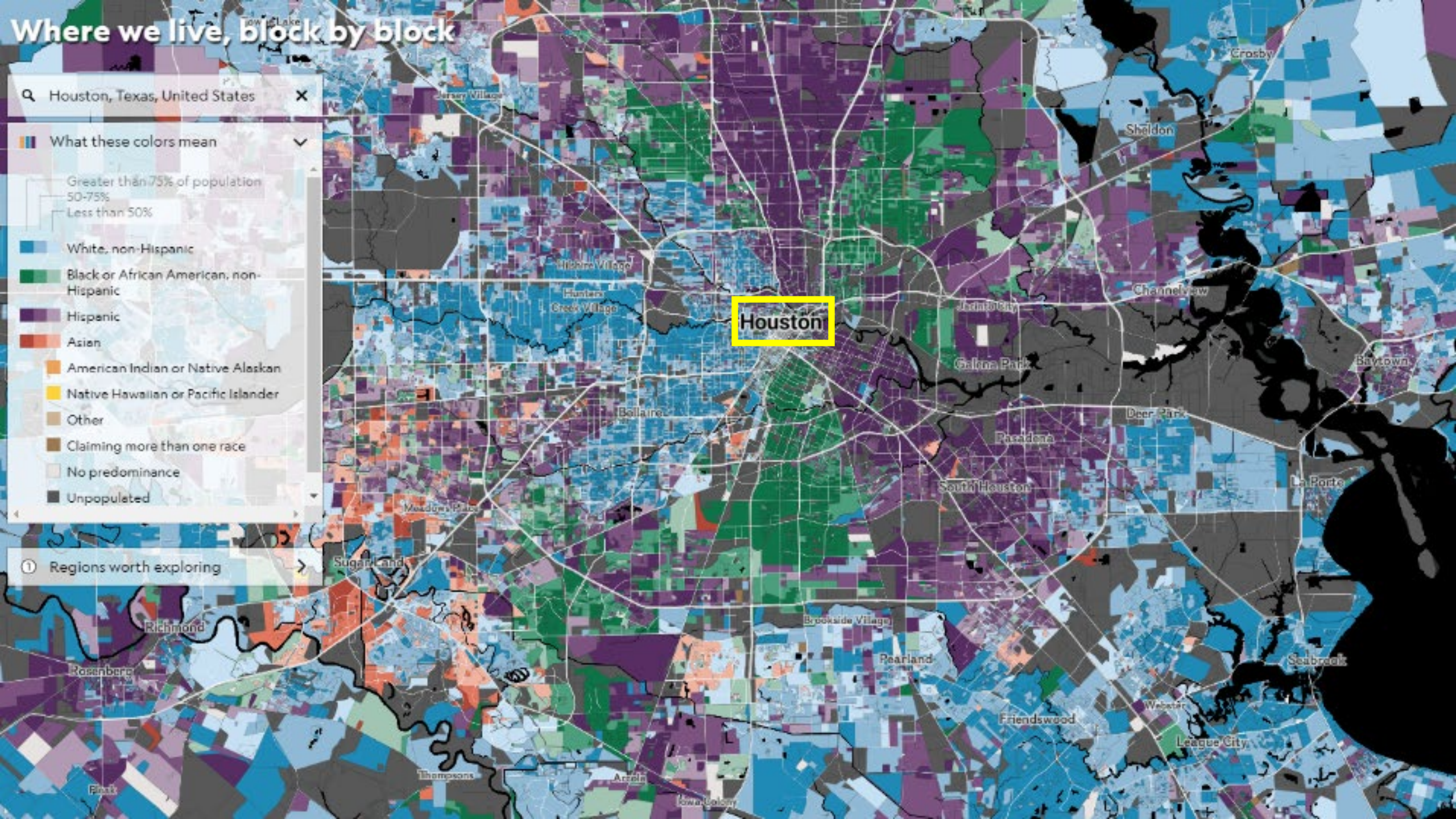
Where we live, block by block

Q Houston, Texas, United States X

What these colors mean V

- Greater than 75% of population
- 50-75%
- Less than 50%
- White, non-Hispanic
- Black or African American, non-Hispanic
- Hispanic
- Asian
- American Indian or Native Alaskan
- Native Hawaiian or Pacific Islander
- Other
- Claiming more than one race
- No predominance
- Unpopulated

Regions worth exploring >



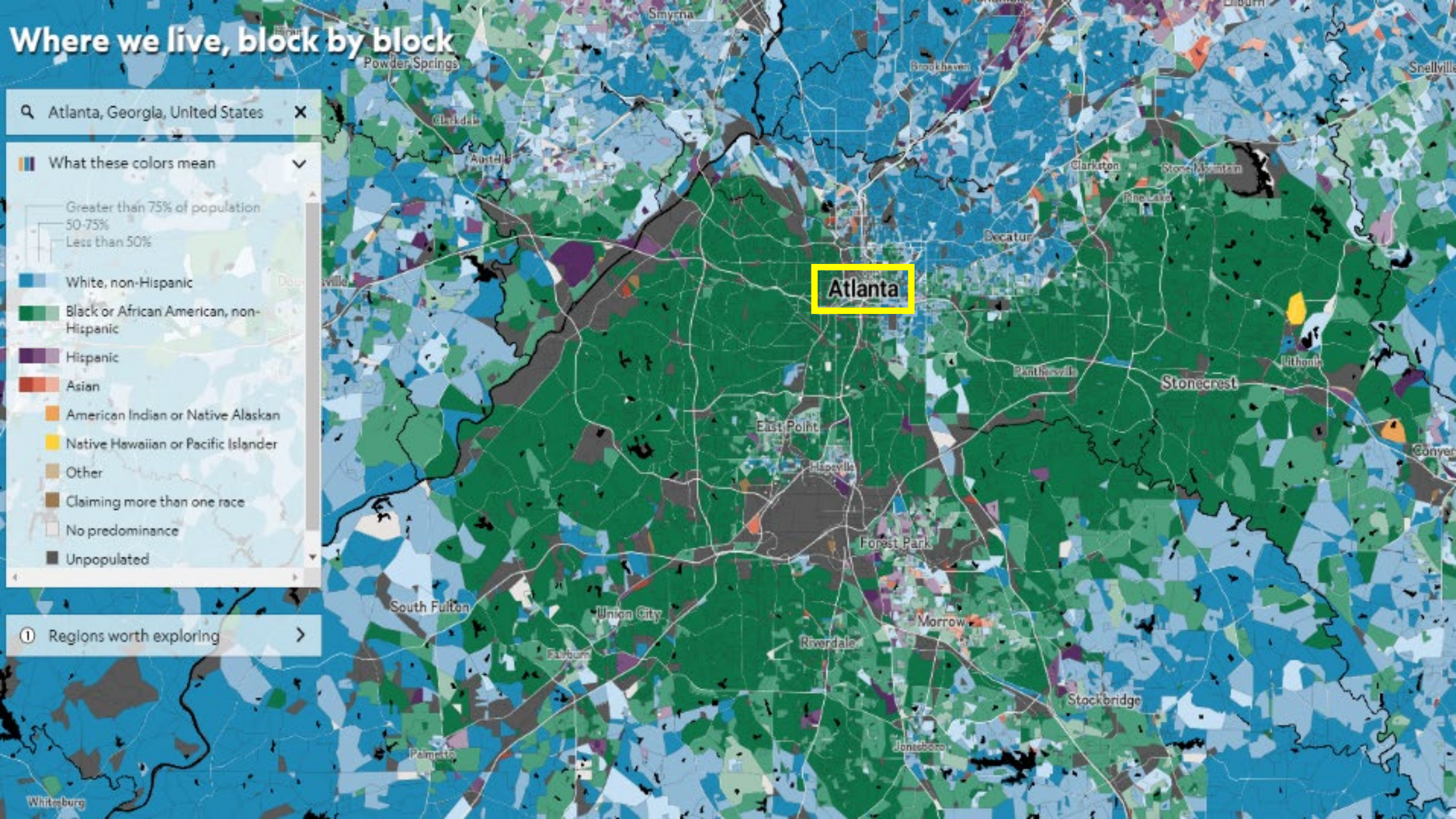
Where we live, block by block

Atlanta, Georgia, United States

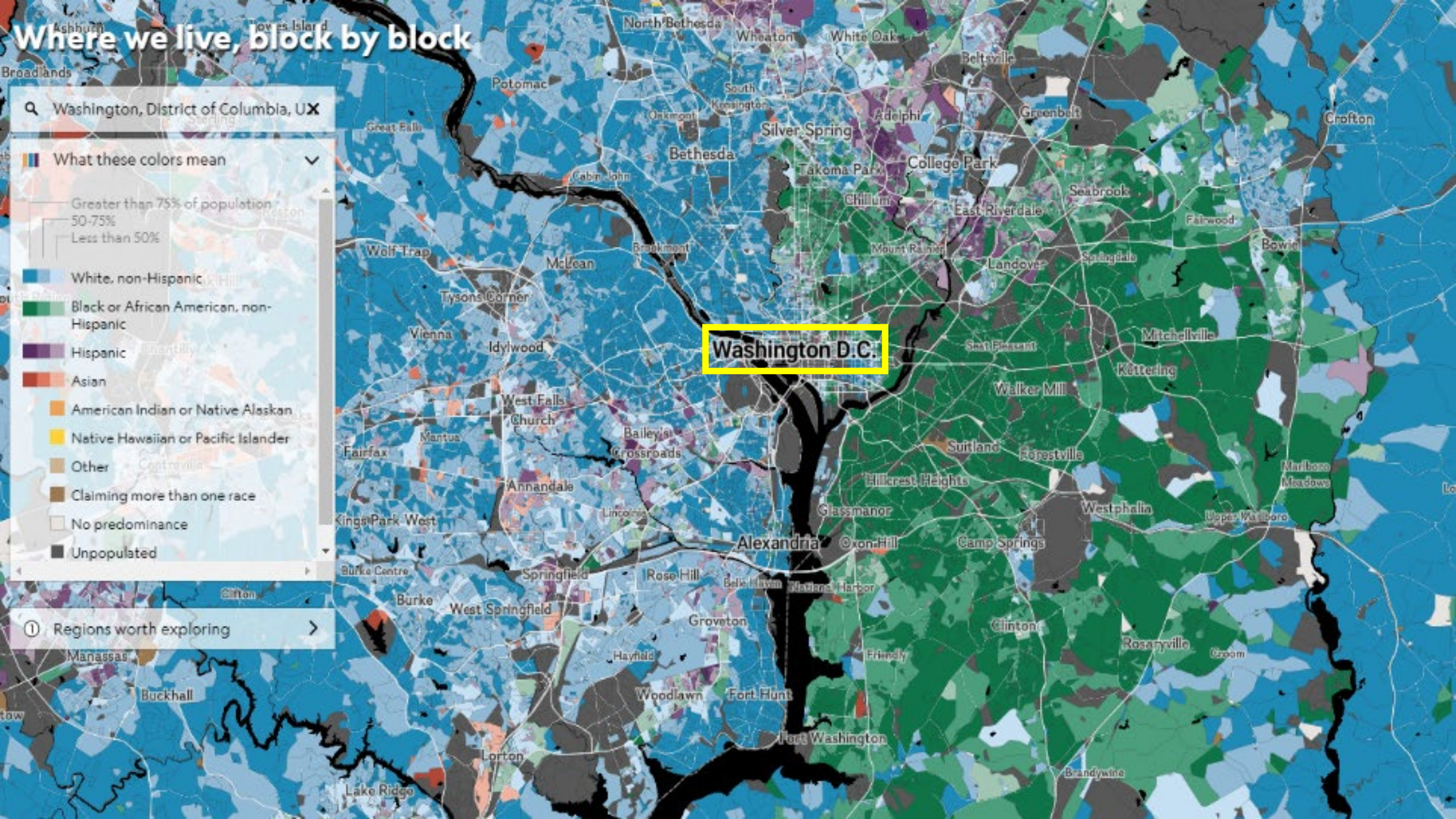
What these colors mean

- Greater than 75% of population
- 50-75%
- Less than 50%
- White, non-Hispanic
- Black or African American, non-Hispanic
- Hispanic
- Asian
- American Indian or Native Alaskan
- Native Hawaiian or Pacific Islander
- Other
- Claiming more than one race
- No predominance
- Unpopulated

Regions worth exploring



Where we live, block by block

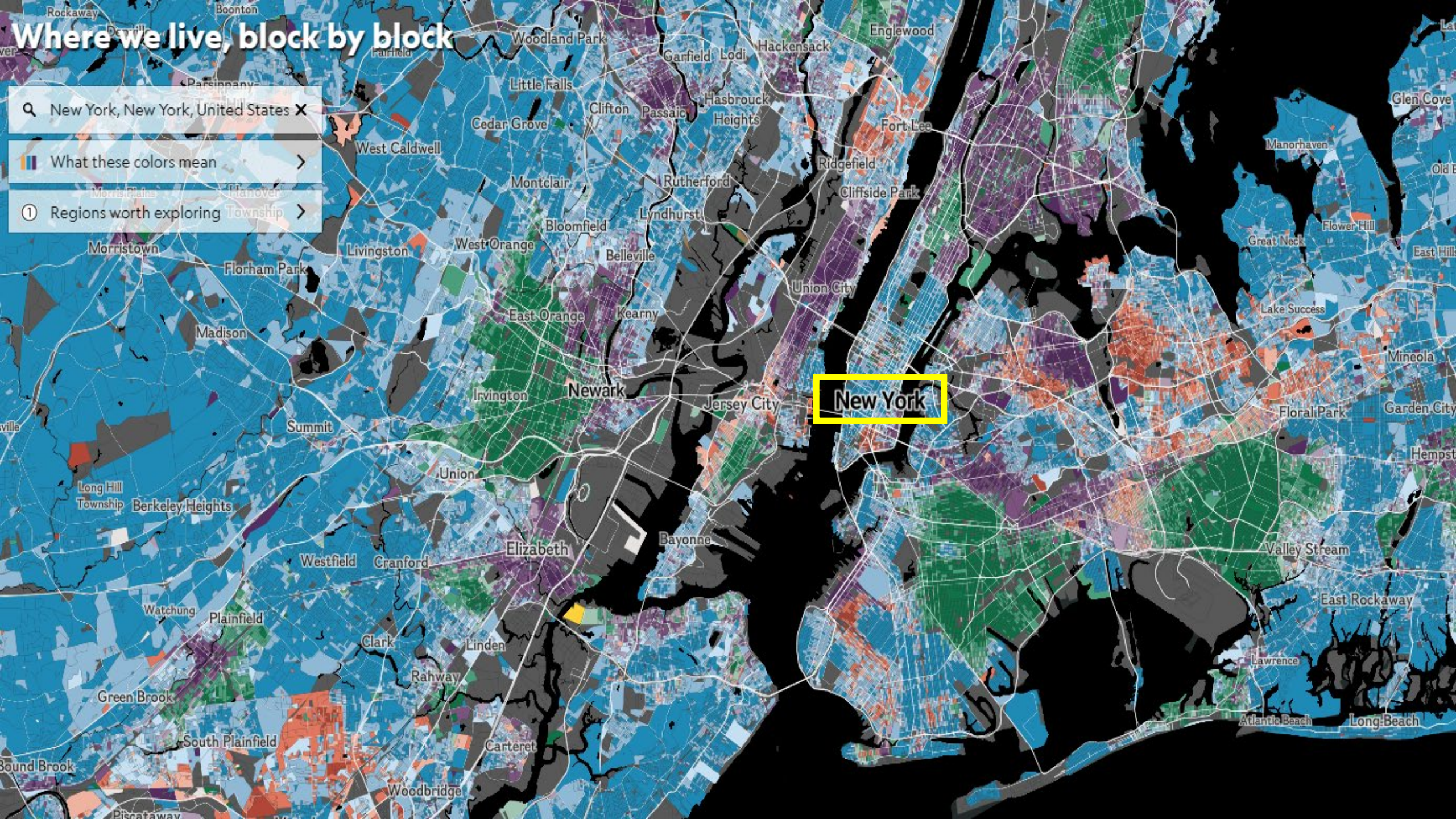


Where we live, block by block

🔍 New York, New York, United States ✕

🇺🇸 What these colors mean >

📍 Regions worth exploring >



Where we live, block by block

Portland, Oregon, United States

What these colors mean

- Greater than 75% of population
- 50-75%
- Less than 50%
- White, non-Hispanic
- Black or African American, non-Hispanic
- Hispanic
- Asian
- American Indian or Native Alaskan
- Native Hawaiian or Pacific Islander
- Other
- Claiming more than one race
- No predominance
- Unpopulated

Regions worth exploring



Portland

Beaverton

Jacktown

Milwaukie

Happy Valley

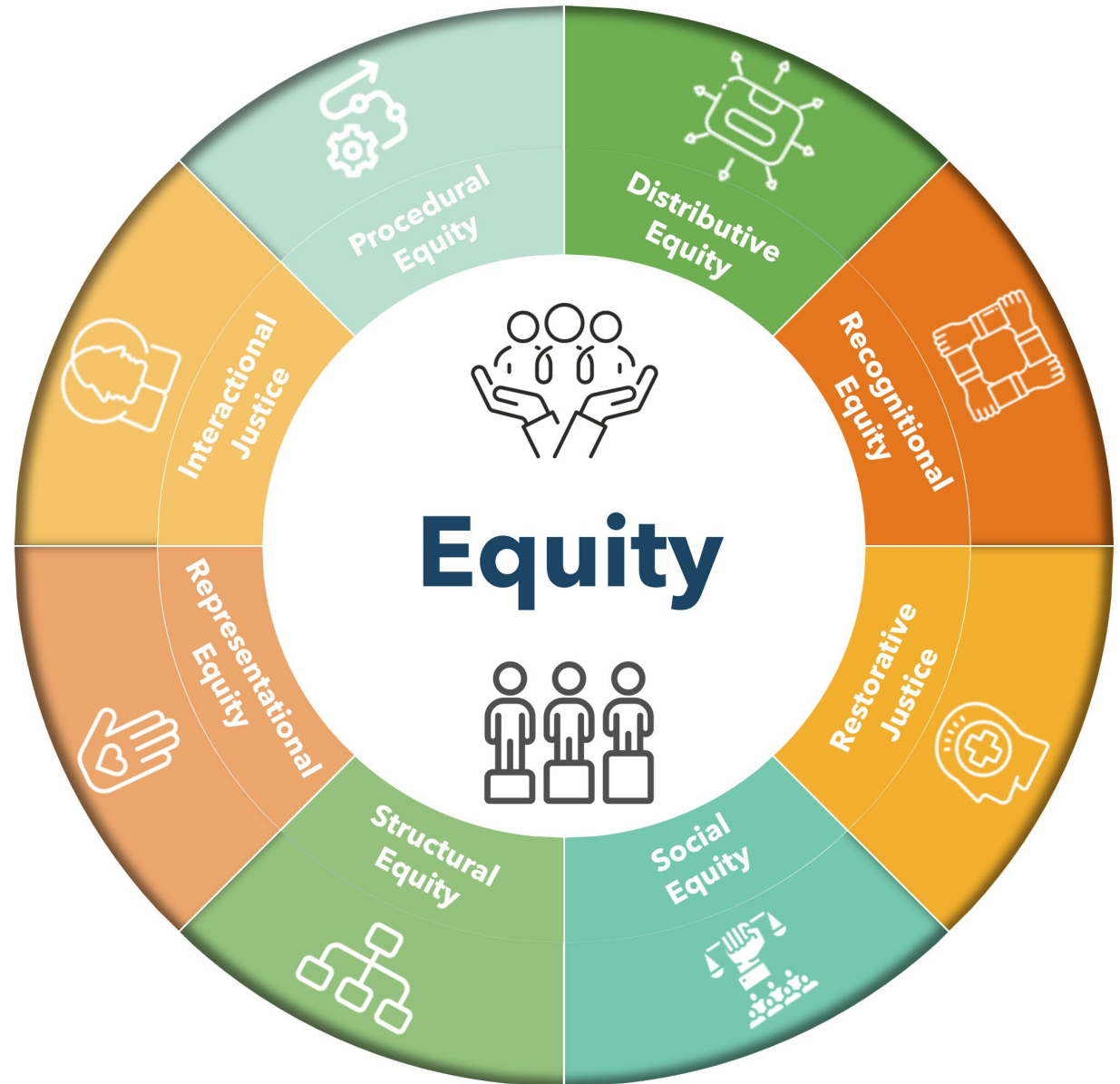
What can we do to create an equitable and inclusive system for all?

AMEWORK FOR REDUCING HEALTH INEQUITIES
AREA REGIONAL HEALTH INEQUITIES INITIATIVE



Centering Equity in Decision-Making

- Distributive Equity
- Interactional Justice
- Procedural Equity
- Recognitional Equity
- Representational Equity
- Restorative Justice
- Social Equity
- Structural Equity





Distributive Equity:

How can we ensure that transportation resources and investments are distributed equitably across all communities, especially those historically underserved?



Interactional Justice:

How do we ensure that all community members are treated with respect and dignity in the decision-making process and have their voices meaningfully included?



Procedural Equity:

How can we create transparent and inclusive decision-making processes in transportation planning that ensure all stakeholders, especially marginalized groups, have an equal opportunity to participate and influence outcomes?"



Representational Equity:

How can we ensure that the diversity of our community is accurately reflected in transportation leadership and decision-making bodies, so that the needs and perspectives of all groups are considered?



Restorative Justice:

What steps can we take to address and rectify past injustices in transportation planning that have disproportionately harmed marginalized communities?



Restorative Justice:

What steps can we take to address and rectify past injustices in transportation planning that have disproportionately harmed marginalized communities?



Social Equity:

How can we design transportation policies and systems that promote social equity by addressing disparities and ensuring fair access to resources and opportunities for all social groups?



Structural Equity:

How can we reshape the underlying systems and structures in transportation planning to eliminate systemic barriers and create fair opportunities for all communities?

Recommendations



ACTION #1: RACIAL EQUITY ACTION PLAN

COMMIT TO EQUITY THROUGH THE ADOPTION OF A RACIAL EQUITY ACTION PLAN



Racial Equity: Baseline Conditions Report

March 2021

Revised March 24, 2021



visit us at scag.ca.gov

7 | COMMITTEE RECOMMENDATIONS

Racial Equity Early Action Plan

Based on the discussions and feedback of the Special Committee as well as other stakeholders, SCAG staff prepared the draft EAP, which includes a total of 29 actions fairly evenly split across all the goals and strategies. The early actions include activities that can be initiated with existing resources through process improvements, leveraging current work activities, and forming new partnerships, as well as new efforts and programs that would need to be considered through the budget development process. The EAP is anticipated to be a "living document," with opportunities to identify new actions over time. It is a resource to begin to align and bring greater focus to opportunities to advance racial equity through SCAG's work. Upon Regional Council adoption, SCAG staff will take steps to begin implementing the EAP. SCAG anticipates that its newly formed Inclusion, Diversity, Equity, and Awareness (IDEA) Team will oversee implementation of and updates to the EAP, and that SCAG staff will provide the Regional Council with periodic updates to ensure progress and accountability.

GOAL 1 | SHIFT ORGANIZATIONAL CULTURE

Listen & Learn	Engage & Co-Power	Integrate & Institutionalize
<ul style="list-style-type: none"> Develop an Inclusion, Diversity, Equity, and Awareness (IDEA) Education and Training Program Conduct an externally led racial equity audit to further inform equity actions 	<ul style="list-style-type: none"> Establish an IDEA Team to oversee and update EAP Assess and align procurement policies with diversity goals Create an Equity Planning Resource Group to share best practices Develop a Diversity Style Guide on standards for communicating 	<ul style="list-style-type: none"> Update SCAG's Strategic Plan to incorporate an equity vision and goals to guide agency work plans Prepare an Inclusive and Equitable Talent Management Strategy

GOAL 2 | CENTER RACIAL EQUITY IN REGIONAL POLICY & PLANNING

Listen & Learn	Engage & Co-Power	Integrate & Institutionalize
<ul style="list-style-type: none"> Offer equity training for Board members, including as part of Board Orientation Include Equity Assessment section in Staff Reports Prepare Annual Racial Equity Indicators Report 	<ul style="list-style-type: none"> Increase opportunity for participation in Policy Committees; Formalize Committee equity roles Update Public Participation Plan Form Regional Policy Working Group dedicated to Equity 	<ul style="list-style-type: none"> Develop equity goals, policies, and metrics as part of Connect SoCal update Explore developing Research Program with University Partners

GOAL 3 | ENCOURAGE RACIAL EQUITY IN LOCAL PLANNING

Listen & Learn	Engage & Co-Power	Integrate & Institutionalize
<ul style="list-style-type: none"> Support data requests, create tools for information sharing Expand Toolbox Tuesday trainings to include sessions on racial equity Provide elected officials with fact sheets and tools to promote racial equity 	<ul style="list-style-type: none"> Provide resources for CBO engagement in Local Planning - e.g., Call for Collaboration, Go Human Mini-Grants Build planning capacity in low-resourced jurisdictions by providing staff support - e.g., Civic Sparks, Public Health Fellows 	<ul style="list-style-type: none"> Refine equity goals and evaluation criteria used in Sustainable Communities Program Provide resources through the Sustainable Communities Program to promote Environmental Justice Identify opportunities to incorporate equity analysis in development of 2023 FTIP

GOAL 4 | ACTIVATE & AMPLIFY

Listen & Learn	Engage & Co-Power	Integrate & Institutionalize
<ul style="list-style-type: none"> Collaborate on a public information campaign to promote fair housing, reduce segregation Strengthen relationships with other MPOs 	<ul style="list-style-type: none"> Explore opportunities to partner to establish a "Planning University" for Community-Based Organizations & Stakeholders Develop an Excellence in Equity Annual Award Program 	<ul style="list-style-type: none"> Develop Inclusive Economic Recovery Strategy



ACTION #2: PRIORITIZE SAFETY INVESTMENTS
PRIORITIZE INVESTMENTS AND MAINTENANCE IN
TRANSPORTATION UNDERSERVED COMMUNITIES

KSI Non-Motorist Crashes by Residence							
Zip Code	Area	Zip Code Includes ETC Tracts	Non-Motorist KSIs (2018-22)	KSI Crashes Per Year Per Capita	Non-Motorist KSI Rank by Number	Motorists Involved	Motorists # Rank
32808	Pine Hills	Yes	49	15.6	1	53	1
32703	S. Apopka/Forest City	Yes	36	12.6	2	28	9
32839	Holden Heights/ Oak Ridge	Yes	34	13.8	3	32	5
32771	Sanford	Yes	33	11.2	4	23	12
32805	Parramore/ Washington Shores	Yes	30	33.7	5	30	7
32809	Oak Ridge/Sky Lake	Yes	30	20.5	6	18	16
34741	Kissimmee	Yes	29	10.6	7	17	17
34761	Ocoee	Yes	28	12.1	8	34	3
32828	Avalon Park	No	27	7.7	9	29	8
34769	St. Cloud	No	27	18.0	10	15	19

FACT: Represent 20% of the metro Orlando population, but 30% of the non-motorist KSI crashes



ACTION #3: EQUITABLE DISTRIBUTION OF RESOURCES

EVALUATE AND ENSURE THAT RESOURCES AND BENEFITS ARE EQUITABLY DISTRIBUTED ACROSS ALL DEMOGRAPHIC GROUPS.



ACTION #4: CONSIDER SOCIAL EQUITY FACTORS

INTEGRATE COMMUNITY SAFETY, RELIABLE INTERNET ACCESS FOR TRANSIT INFORMATION, AND ACCESSIBLE TRANSIT STOPS



[This Photo](#) by Unknown Author is licensed under [CC BY-SA-NC](#)

**ACTION #5: PUBLIC TRANSIT AND ACTIVE TRANSPORT
ENHANCE AND EXPAND ACCESS IN TRANSPORTATION
UNDERSERVED COMMUNITIES**



**ACTION #6: IMPLEMENT COMMUNITY-DRIVEN SOLUTIONS
ENSURE THE FULL & FAIR PARTICIPATION OF
RACIALIZED MINORITY GROUPS**



ACTION #7: EDUCATION AND AWARENESS CAMPAIGNS

**DEVELOP CULTURALLY RELEVANT AND LINGUISTICALLY ACCESSIBLE
EDUCATION AND AWARENESS CAMPAIGNS**



ACTION #8: EQUITY-FOCUSED ENFORCEMENT

**ENSURE THAT SAFETY RESOURCES AND INTERVENTIONS ARE
DISTRIBUTED EQUITABLY**

ARRESTED MOBILITY





ACTION #9: DATA COLLECTION AND ANALYSIS
IMPLEMENT COMPREHENSIVE DEMOGRAPHIC DATA COLLECTION



ACTION #10: EQUITY AUDITS AND ACCOUNTABILITY

CONDUCT REGULAR EQUITY AUDITS TO ASSESS THE IMPACT OF PROJECTS, PROGRAMS, AND POLICIES ON DIFFERENT POPULATIONS



ACTION #11: FOSTER INTERAGENCY COLLABORATION

**COORDINATE EFFORTS ACROSS VARIOUS LOCAL ENTITIES
INCLUDING GOVERNMENT, BUSINESSES, NON-PROFITS, AND
COMMUNITY ORGS**



ACTION #12: ACKNOWLEDGE THE ROLE OF LEADERSHIP

COMPETENT LEADERSHIP ENSURES THAT RESOURCES ARE ALLOCATED EFFECTIVELY TO ADDRESS THE MOST CRITICAL AREAS



HOBOKEN

Jersey City, New Jersey





**ACTION #13: LEVERAGE THE PASSION OF UNIVERSITY INTERNS
WORK WITH LOCAL COLLEGE AND UNIVERSITIES TO ADVANCE
PROGRAM GOALS AND OBJECTIVES**

3D Renderings



Photo Credit: GCG, 2022

3D Renderings



Photo Credit: GCG, 2022



ACTION #14: PARTNER WITH STATE AND LOCAL HEALTH AGENCIES

**WORK WITH STATE AND LOCAL HEALTH DEPARTMENTS TO
ADVANCE PROGRAM GOALS AND OBJECTIVES**



**City of Waynesboro,
Virginia**



Fairfax County, Virginia



City of Roanoke, Virginia



REMINDER: GENTRIFICATION & DISPLACEMENT

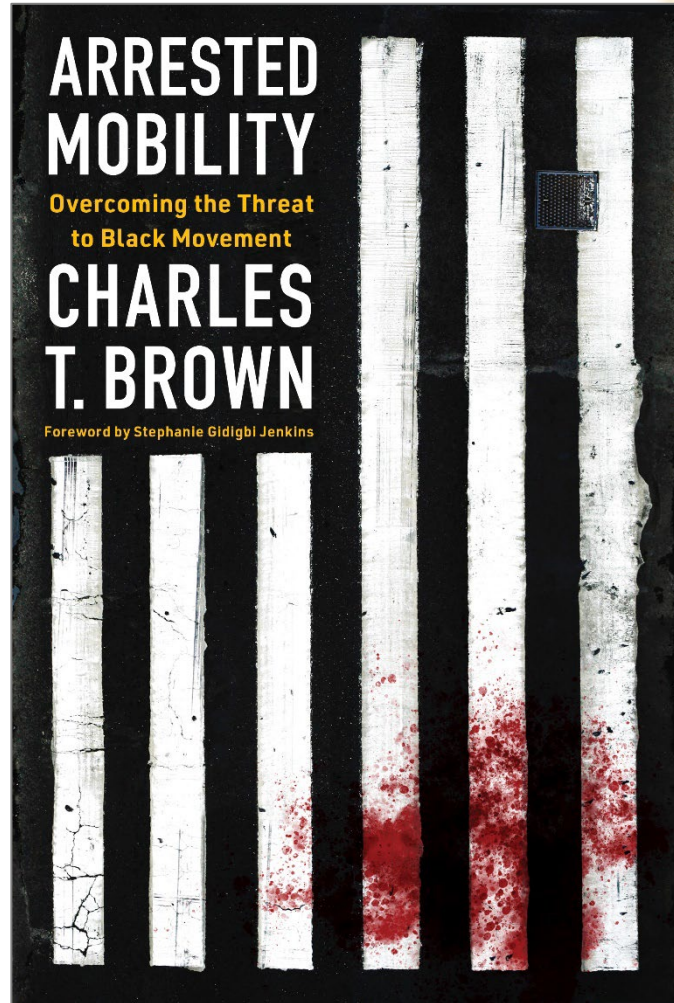
**EVALUATE AND MITIGATE THE UNINTENDED CONSEQUENCES OF
IMPROVED MOBILITY AND ACCESS**

"Equity is the soul of justice. Without equity, there can be no justice." —
Unknown

Thank You!



**I am
Because
WE are**



Arrested Mobility

Charles T. Brown

Use discount code ARRESTED to save 20%
[www.islandpress.org/books/
arrested-mobility](http://www.islandpress.org/books/arrested-mobility)

Questions?



**Center Public
Voices in Planning**