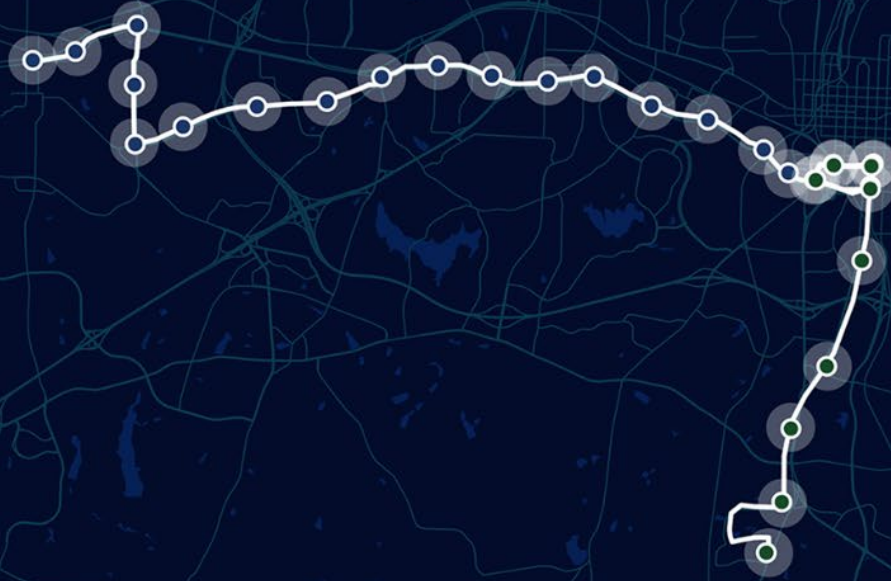


Wake BRT

Western and Southern Station Area Planning Leader and Connector Introduction Meeting



September 27, 2023

City of Raleigh
Town of Cary

SOM

AECOM

SBFRIEDMAN

catalyst

P3 Public Participation Partners
Inform. Involve. Empower.

neighboring
concepts

ADR Planning

Agenda

1. Welcome
2. Introductions
3. Why we are advancing Bus Rapid Transit and Station Area Plans
4. The Process
 - Station Area Planning
 - Engagement
5. Breakouts: Western and Southern Corridors
 - Outcomes of this process?
 - Learnings from previous community processes?
 - Community aspirations and issues?
 - Next steps

1. Welcome

Our mission(s): Station Area Planning

- Wake BRT Southern Corridor
- Wake BRT Western Corridor / Cary BRT

Why we are here today

- To share information on the Station Area Planning Process
- To introduce everyone
- To hear from everyone

2. Introductions

Southern Corridor

Community Connectors

Veronica Carrington
Heather Luden

Community Leaders

Rick Boccard
Dominique Boyd
Michael Gierdowski
David Holbrooks
Ashley Hugh Lewis
Allie Jacobs
Harold Mallette
Lydia Peebles

Western Corridor

Community Connectors

Ana Maria Garcia
Adonnica Rowland

Community Leaders

Andrew Bassett
Reid Baughman
Andrea Fennell
Allison Hutchins
Cheryl Johnson
Carla Luna
Vance Miller
Rhonda Muhammad
Ines Nizeye
Brandon Quinones

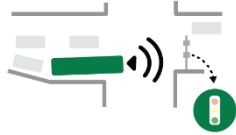
Tom Skolnicki
Al Rieder
Alison Rosciano
Veronica Thring
William Tubilleja

3. Why we are advancing Bus Rapid Transit and Station Area Plans

What is Bus Rapid Transit (BRT)



Dedicated Lanes



Transit Signal Priority



Frequent
On - time Service



Enhanced Stations



Specialized Vehicles



Off- Board
Fare Collection



Unique Branding

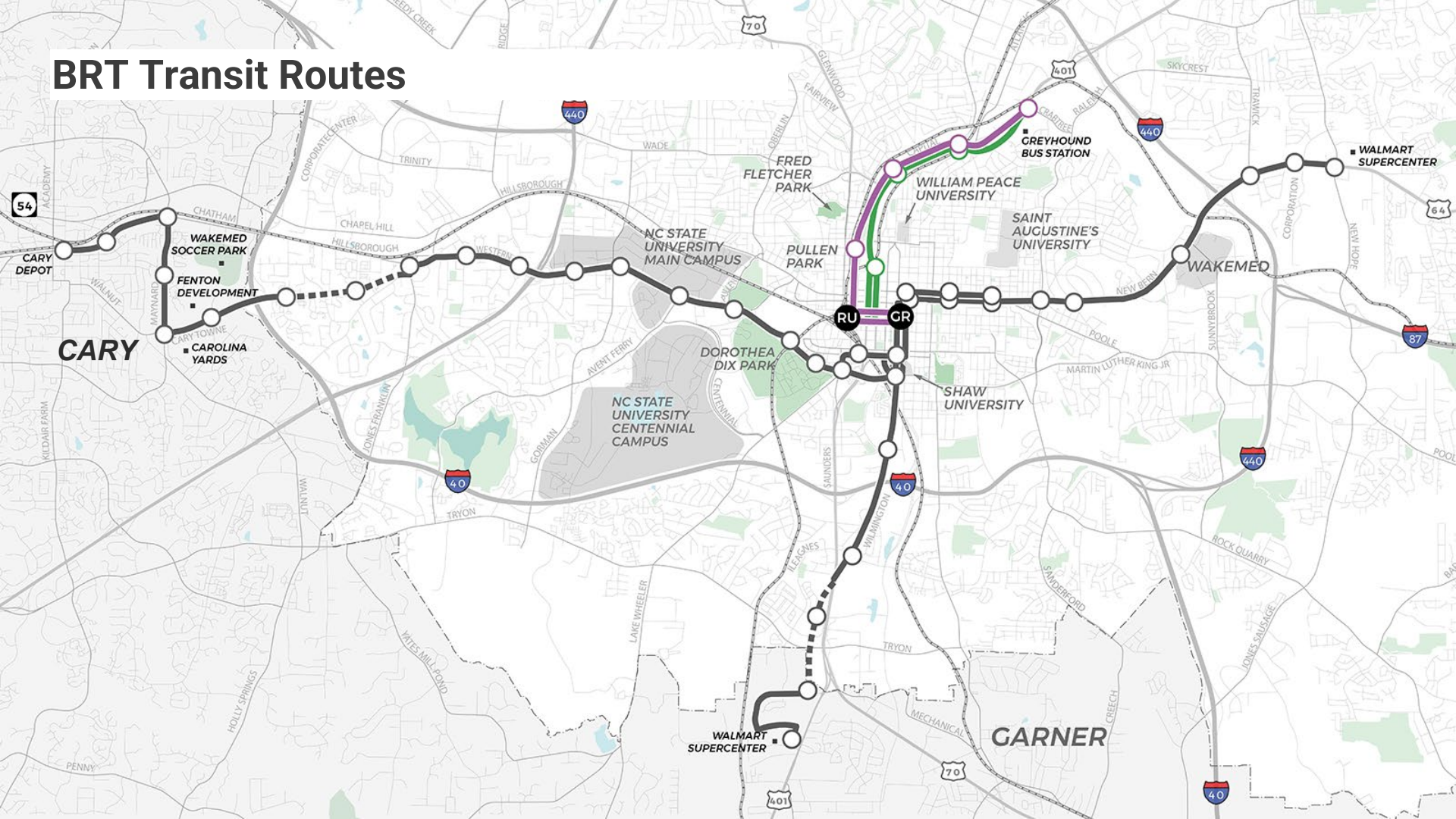


What is Bus Rapid Transit (BRT)

Connects people to jobs, education resources, and other opportunities
Support walkable places that support both housing and commercial destinations
Improve air quality by reducing the number of vehicles on the road
Save money for households who drive less or opt-out of car ownership



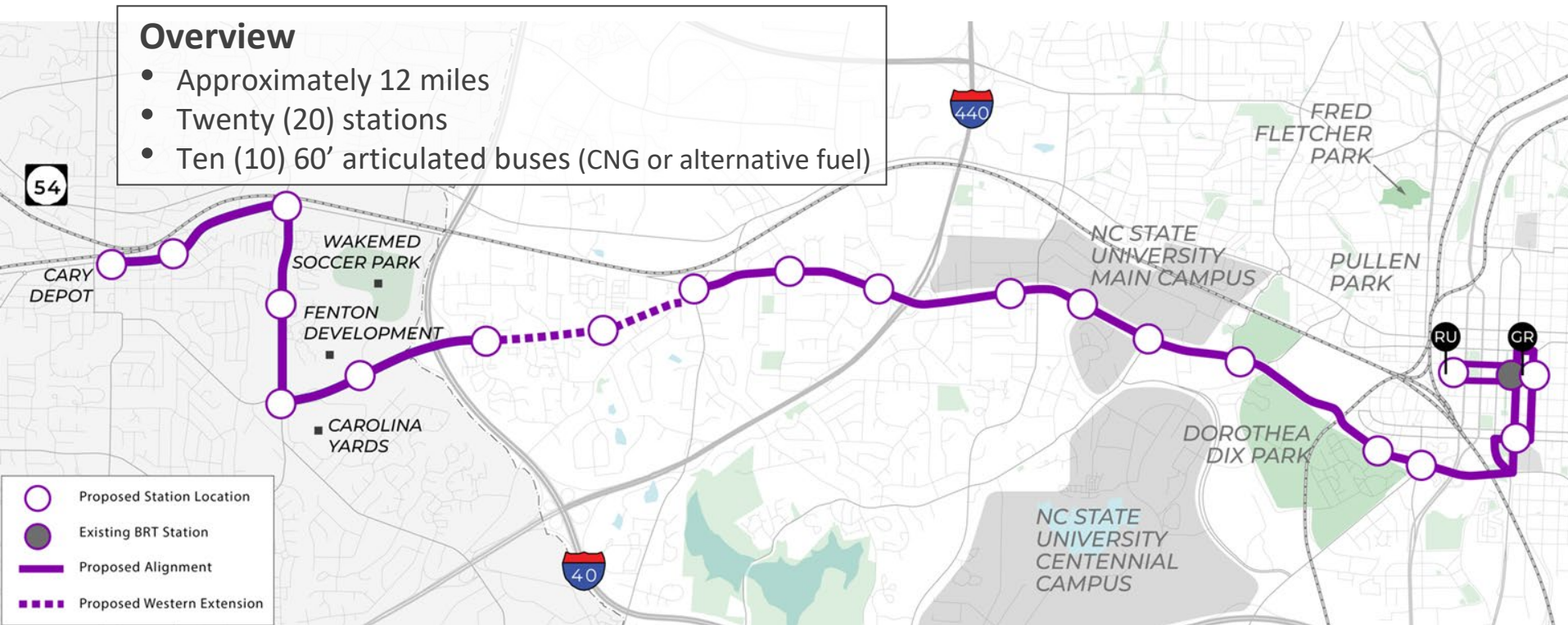
BRT Transit Routes



Western Corridor / Cary BRT

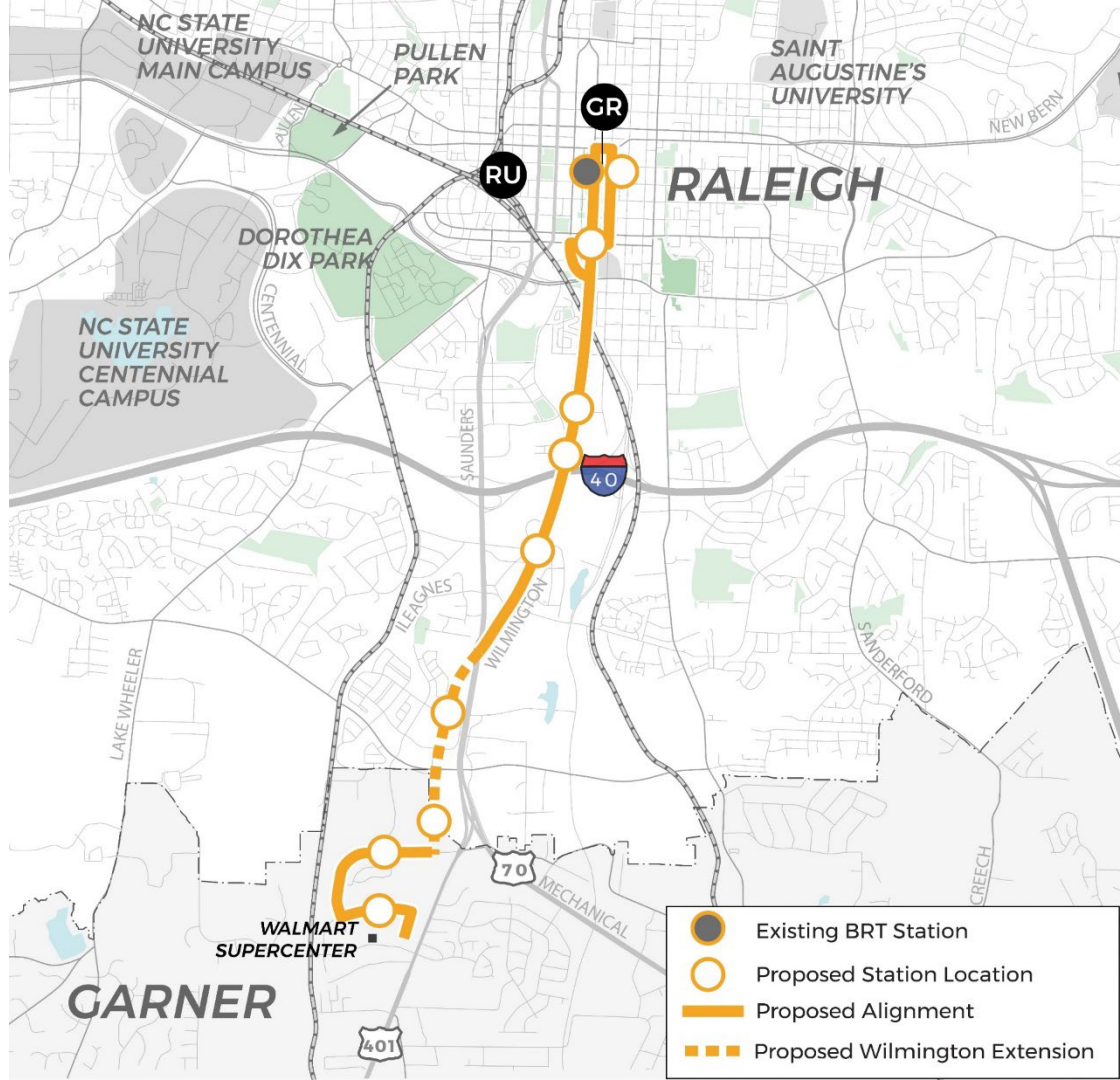
Overview

- Approximately 12 miles
- Twenty (20) stations
- Ten (10) 60' articulated buses (CNG or alternative fuel)



Southern Corridor BRT

- **Approx. 5 miles**
- **BRT: dedicated transit lanes *and* mixed traffic**
- **Federal Transit Administration (FTA) Capital Improvements Grants (CIG) Small Starts: medium-high rating in March 2023**
- **Recommended for funding in FY24 President's Budget Proposal**
- **Final Design: 2028**



Wake BRT Status

Pre-construction

- New Bern Avenue – 2025

Final Design

- Southern Corridor – 2028

Preliminary Design

- Western Corridor – 2029

Planning Study

- Northern Corridor – Beyond 2030
- Garner to Clayton Extension
- Cary to Research Triangle Park (RTP) Extension



What is Station Area Planning

Five key elements

- First and last mile mobility
- Housing affordability and anti-displacement
- Business support and stabilization
- Zoning, land use, and urban design
- Effective and equitable engagement



Leveraging Existing Plans



What is Station Area Planning: **STRONGER MOBILITY**



What is Station Area Planning: **DEVELOPMENT DIVERSITY**



What is Station Area Planning: **ACTIVE STREETS AND PUBLIC SPACES**



What is Station Area Planning: **SUSTAINABLE LANDSCAPES**



What is Station Area Planning: **EQUITY – HOUSING, JOBS, SERVICES**



Example Corridor Plans

Corridor Frameworks

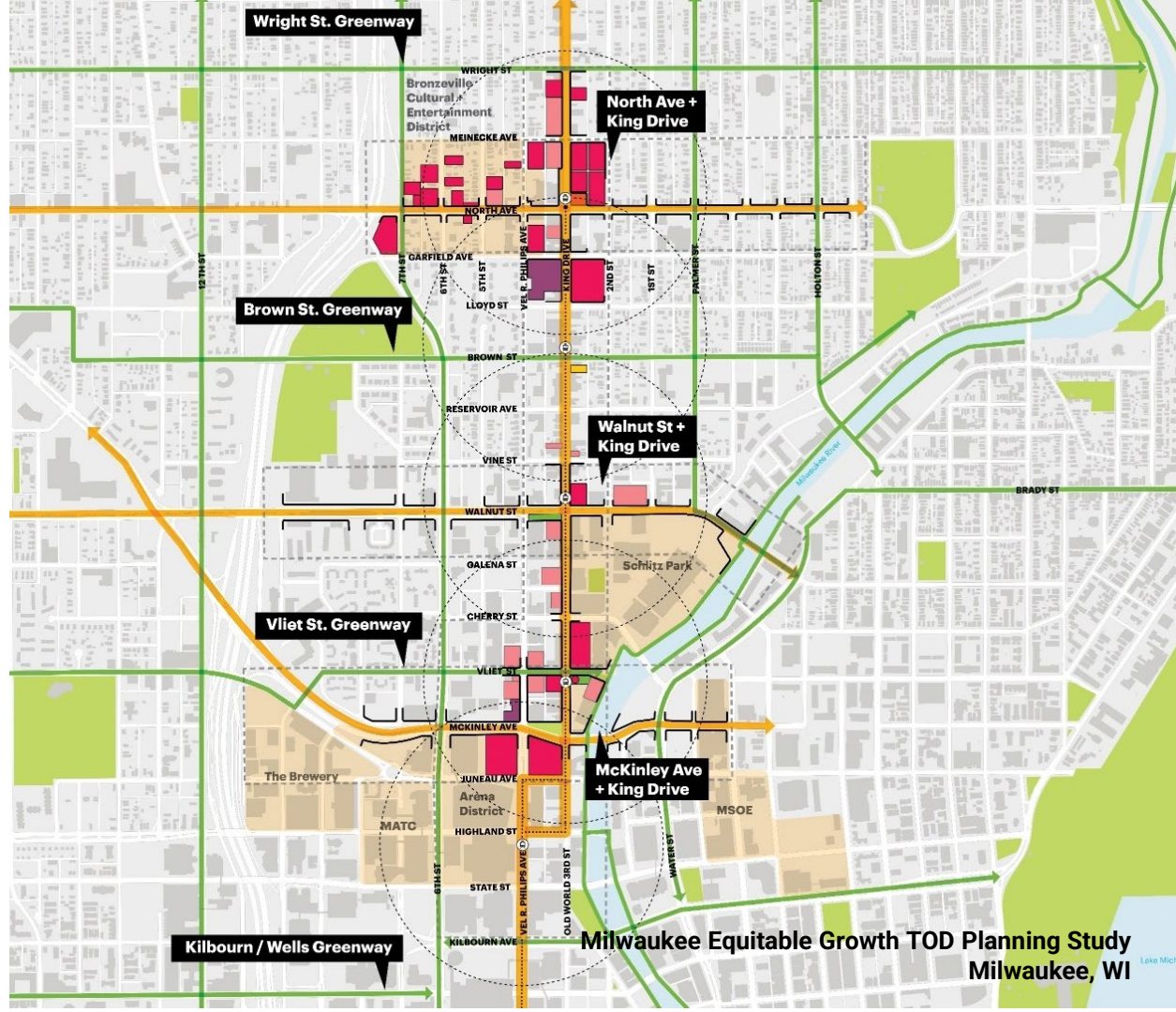
Connecting Station Areas

- 1,500-1,800 new homes
- 20-25 new storefronts
- 1,500-2,500 new jobs
- 3-4 new community facilities

- Primary sites
- Secondary / Longer Term sites
- Potential Reuse
- Active Proposal
- Potential Greenspace

Equitable TOD
Milwaukee, WI

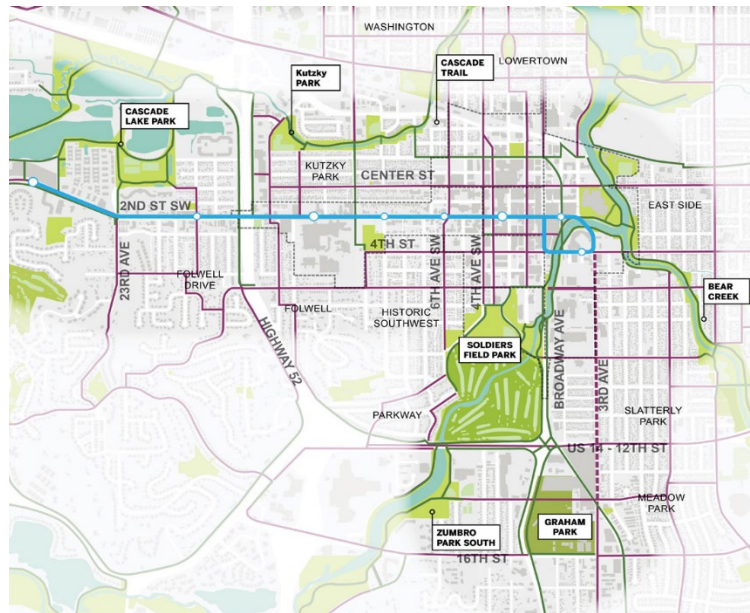
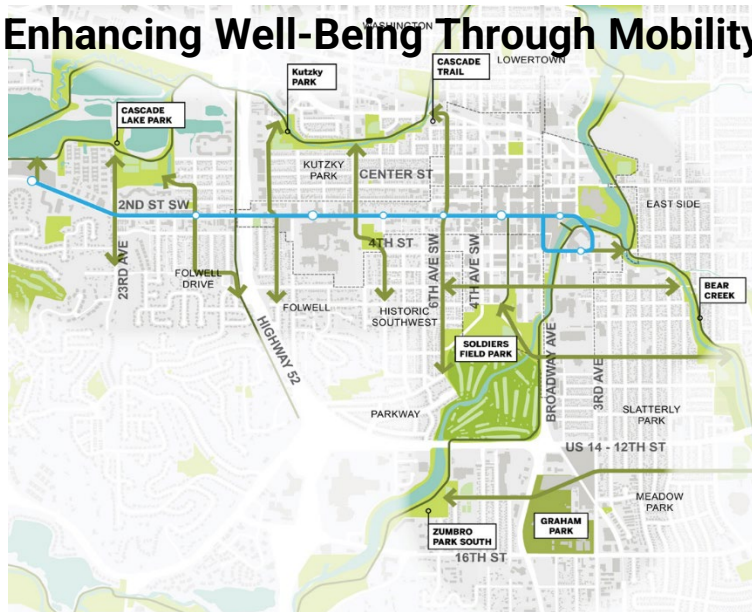
WESTERN + SOUTHERN STATION AREA PLANNING



Example Corridor Plans

Corridor Frameworks

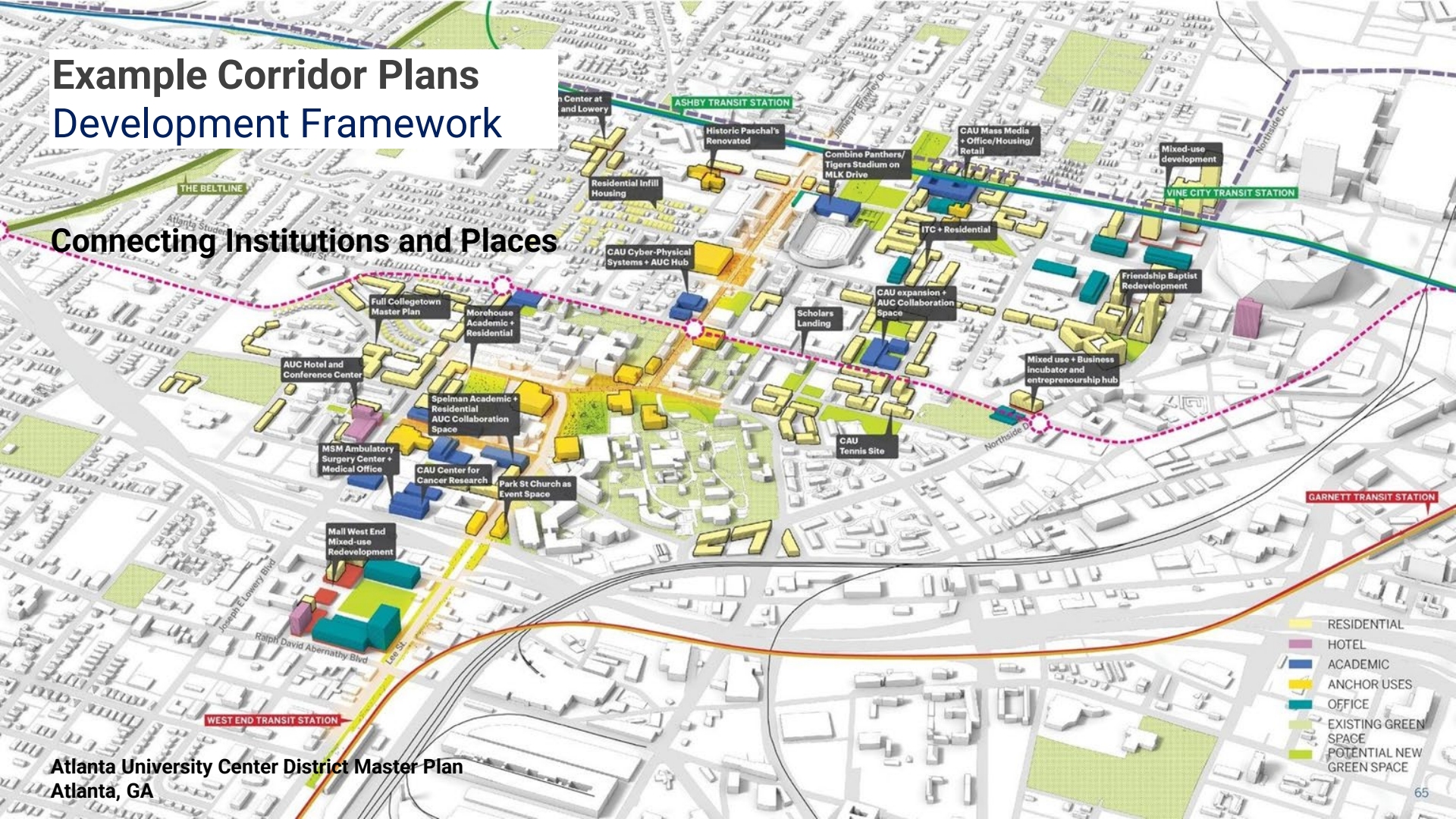
Enhancing Well-Being Through Mobility



New Rapid Transit for a Growing, Equitable Rochester
Rochester, MN

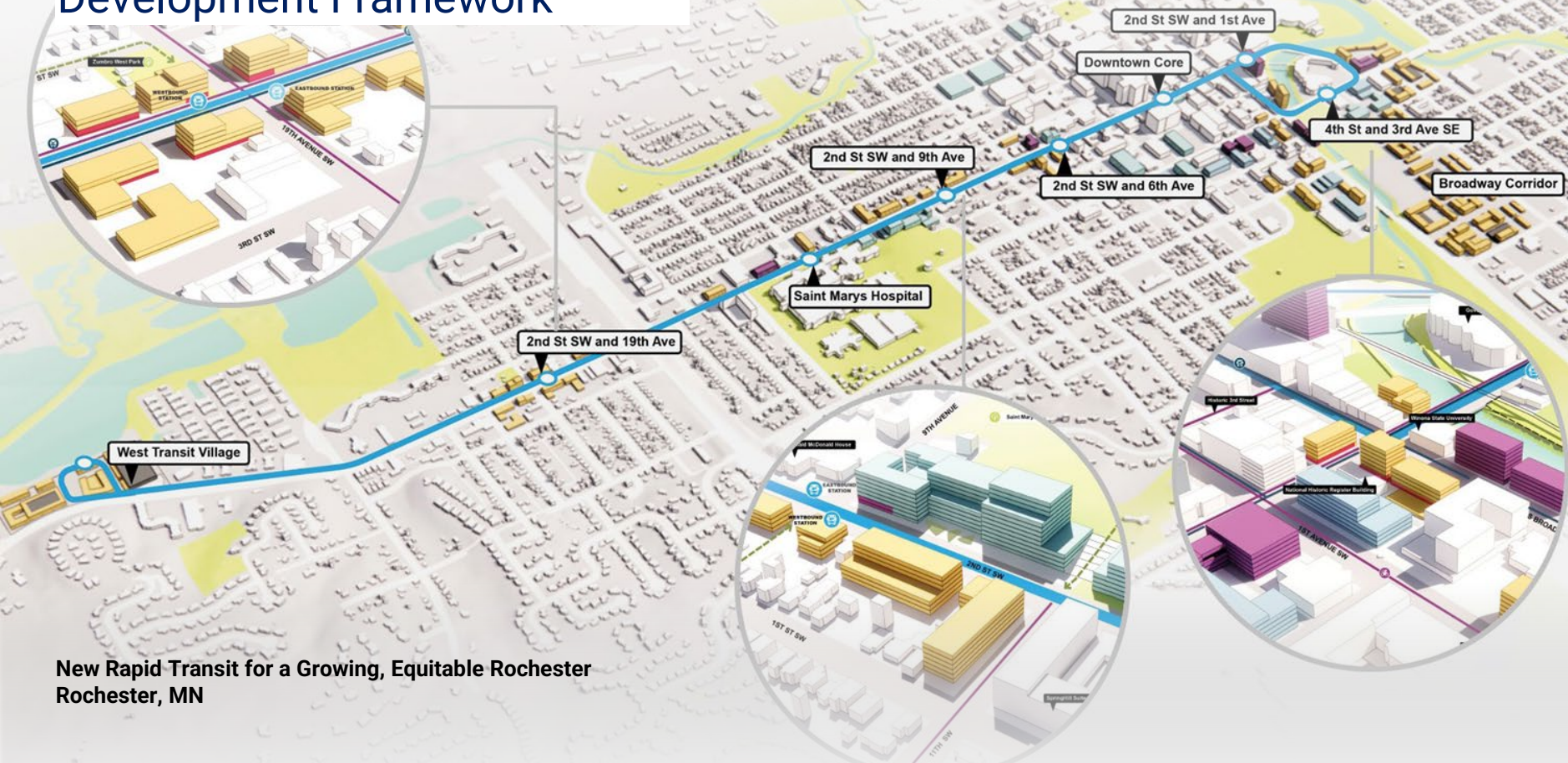
Example Corridor Plans Development Framework

Connecting Institutions and Places



Example Corridor Plans Development Framework

Responsive Station Area Concepts



New Rapid Transit for a Growing, Equitable Rochester
Rochester, MN

Chapel Hill Transit Oriented Development Plan

Chapel Hill, NC

Homestead Rd



Example Corridor Plans

View from the Street



Access to bike and scooter share

Active Ground Floors

A Community Gathering Place

Walking and Biking Connections to Cascade Lake Park

Raised Crosswalks

New Rapid Transit for a Growing, Equitable Rochester
Rochester, MN

Example Corridor Plans

View from the Street



Chapel Hill Transit Oriented Development Plan
Chapel Hill, NC

How are Station Area Plans Implemented

Project Type	Component	Partners
CAPITAL PROJECTS	BRT	FEDERAL AND LOCAL GOVT
	STREETS	FEDERAL, STATE, LOCAL GOVT
	BIKE + WALKING	FEDERAL, STATE, LOCAL GOVT
MIXED-USE DEVELOPMENT	ZONING	LOCAL GOVT
	INTENSIFICATION	EXISTING PROPERTY OWNERS
	REDEVELOPMENT	DEVELOPERS
AFFORDABLE HOUSING	NEW DEVELOPMENT	DEVELOPERS + NON PROFITS

Potential Affordable Housing Tools to be Investigated

HOUSING SUPPLY

Recruit Affordable
Housing Developers

HOUSING PROGRAMS

Maintain or Expand Access
to Affordable Housing

FUNDING MECHANISMS

Establish or Expand Funding Sources for
Affordable Housing

PLANNING & REGULATION

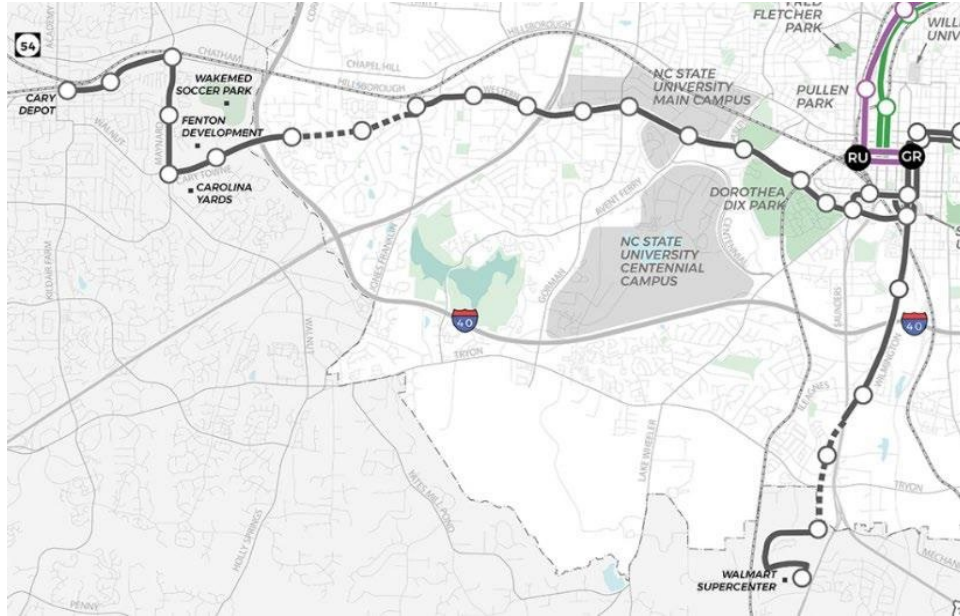
Protect Affordability

ZONING POLICIES

Increase Supply of Affordable Units and Protect
Existing Units

Station Area Planning Outcomes

- **Advance Raleigh and Cary Plans**
- **Reflect TOD Values, Policy, Investment**
- **Corridor Visions and Framework Plans**
- **Station Area Plans – Half Mile Radius**
 - Location + site specific guidance
 - First mile/last mile and safety
 - Public realm and open space
- **Community Engagement**
 - Residents, businesses, community groups
- **Implementation Strategies***
 - ** Not construction projects directly*

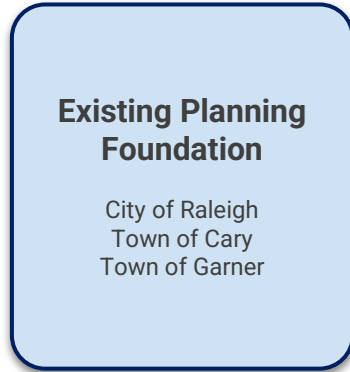


4. The Process

Station Area Planning Engagement

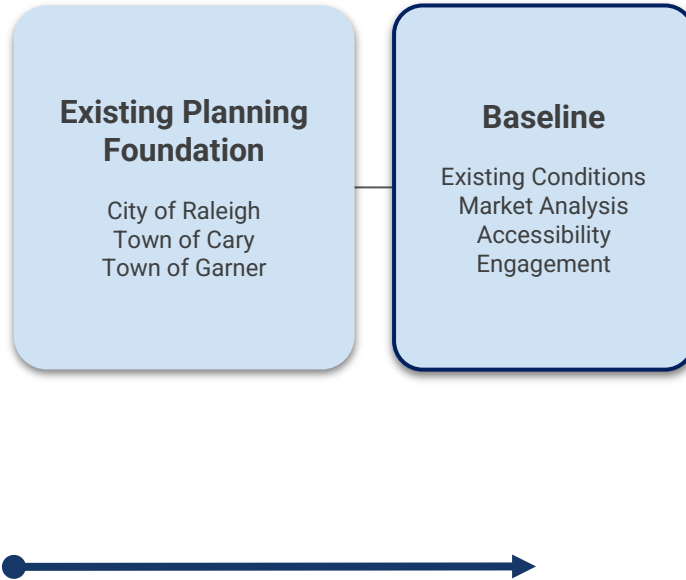
Overall Station Area Planning Approach

Integrating Design, Connectivity, Equity, Implementation



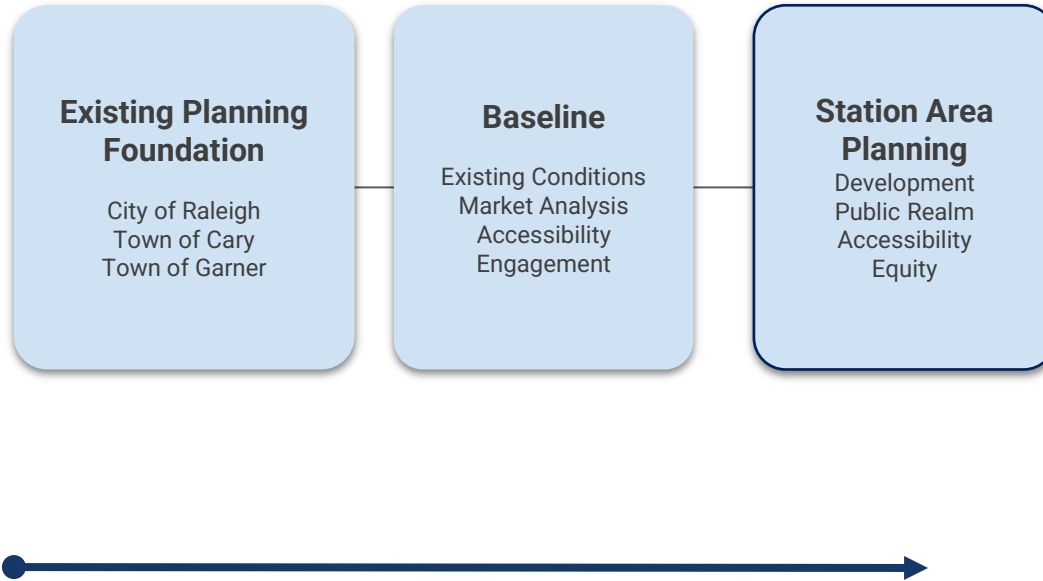
Overall Station Area Planning Approach

Integrating Design, Connectivity, Equity, Implementation



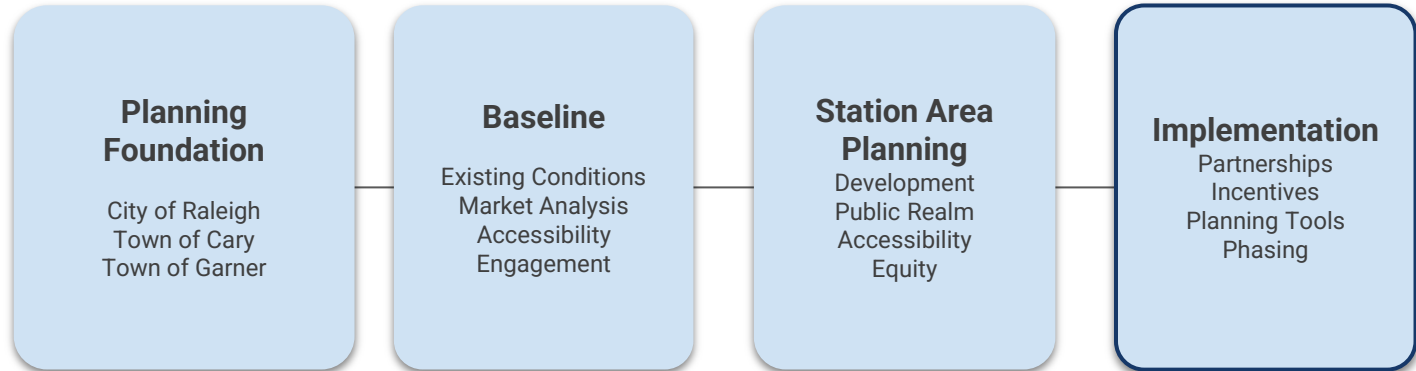
Overall Station Area Planning Approach

Integrating Design, Connectivity, Equity, Implementation



Overall Station Area Planning Approach

Integrating Design, Connectivity, Equity, Implementation





Engage with diverse communities in
a **valuable** and **productive way**

Public Engagement Plan

Key Engagement Factors

Who...

- "Diverse community voices"
- "Inclusive"
- "The entire community"
- "People of all backgrounds"
- "Underrepresented populations"
- "Young people"
- "People diverse in age, ability and income"
- "People from different geographies"
- "Future residents"

Why...

- "Information / education"
- "Understand community needs"
- "Identify community values"
- "Inspire dialogue"
- "Gather input / perspectives"
- "Ensure people are heard"
- "Provide clear direction"
- "Coordinate the vision"
- "Prioritize solutions"
- "Influence the regulatory agency"

How...

- A co-authored "Public Engagement Plan"
- Engagement "throughout the process"
- Direct outreach - go to the audience
- "Innovative approaches"
- "A wide range of techniques"
- "In person and online forums"
- "Multilingual approaches"
- "At all times of day"
- "In-place methods"

Focused Rounds of Engagement

Engagement Round 1: Visioning

Project purpose
Existing conditions
Diverse, locally relevant examples
Concepts: Station Areas

Outcome

Increased awareness
Vision objectives
Area goals

Engagement Round 2: Station Area Scenarios

Vision Concept
Refined urban design principles
Equity objectives
Development
Accessibility
Public Realm
Draft framework plans
Initial 3D digital modeling

Outcome

Station Area directions

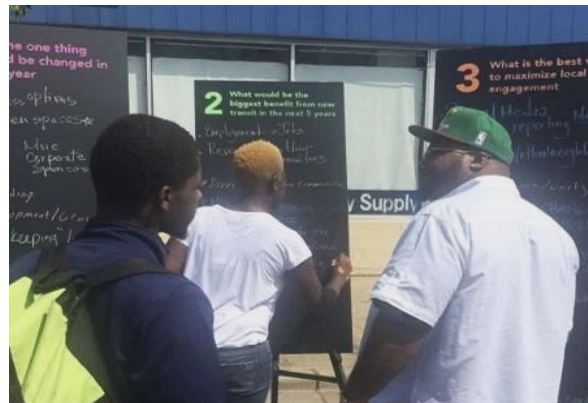
Engagement Round 3: Station Area Plans

Draft final plans
Urban design forms and character
Housing affordability, anti-displacement
Missing middle housing
Public realm and open space
Implementation Strategies
Plans, diagrams
Refined digital 3D Modeling
Eye level visualizations

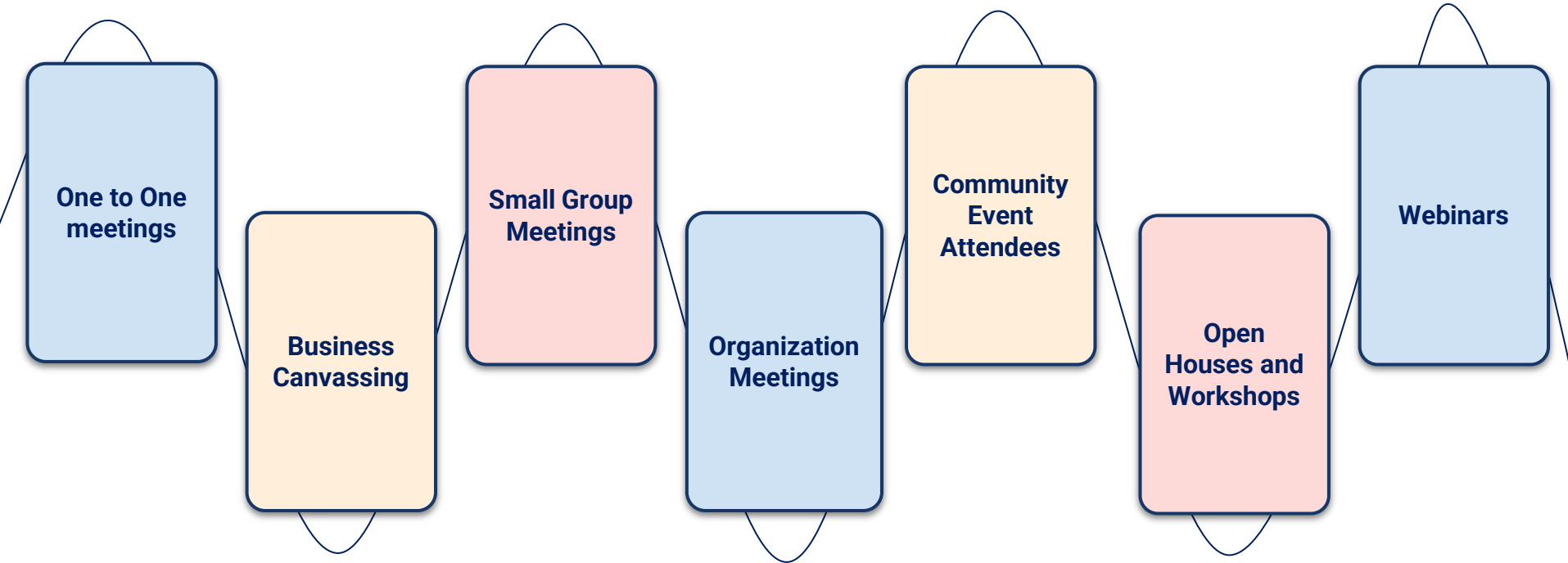
Outcome

Agreed direction

Anchored by three rounds of Open Houses



Multiple Engagement Approaches



5. Breakout Discussions

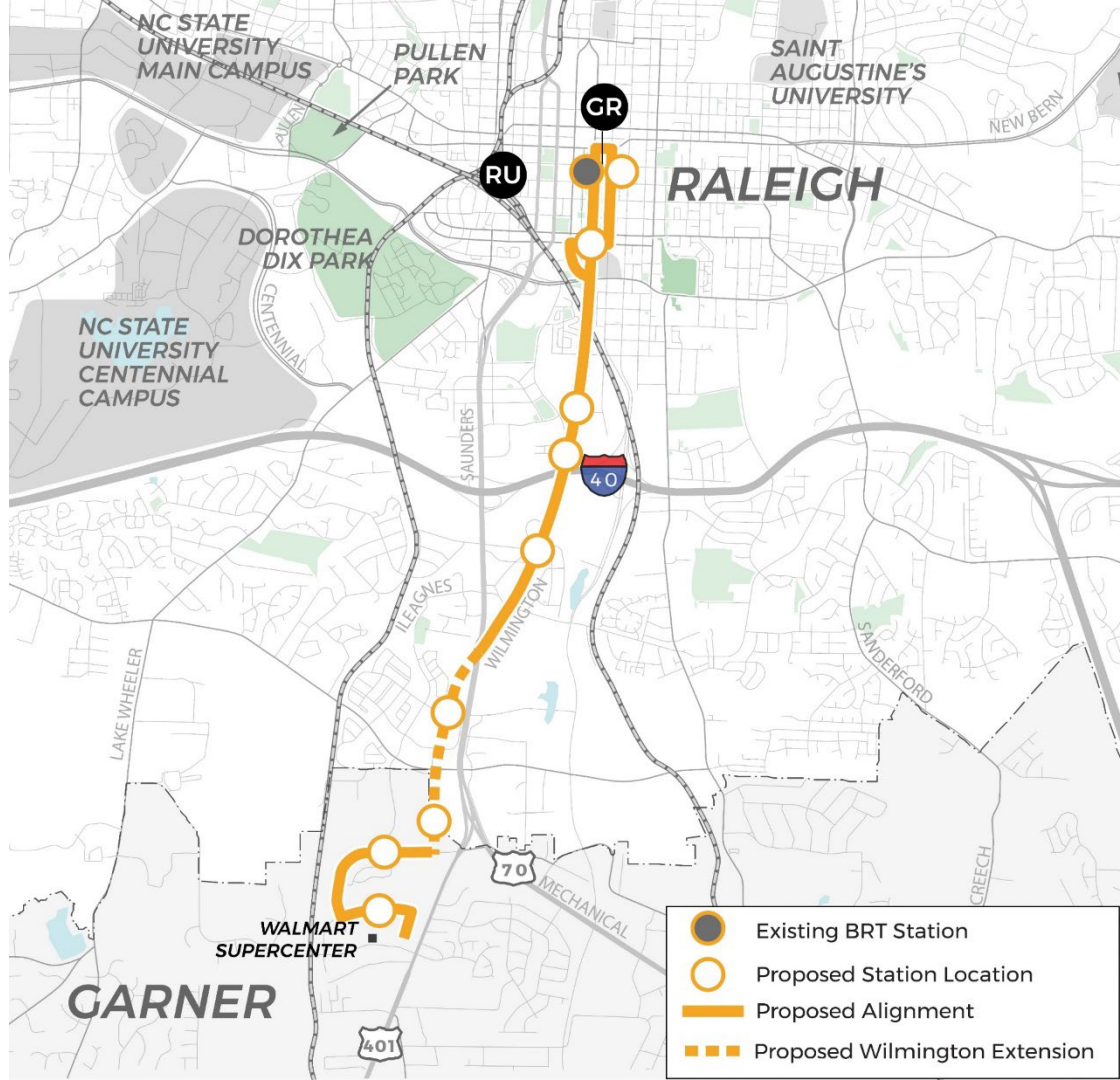
5. Breakout: Southern Corridor

Leverage Existing Plans

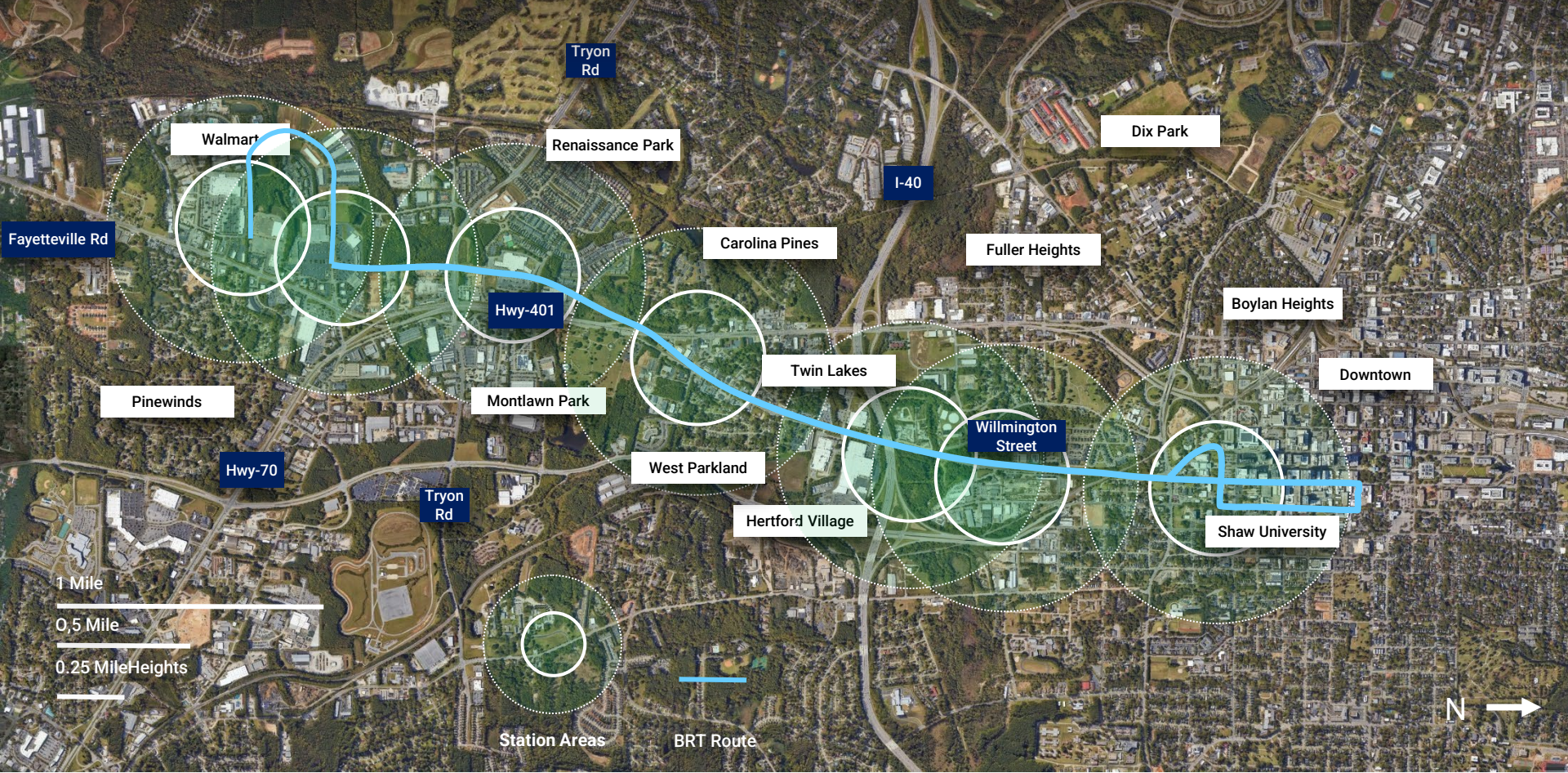


Southern Corridor BRT

- Approx. 5 miles
- BRT: dedicated transit lanes *and* mixed traffic
- 10% design milestone
- Federal Transit Administration (FTA) Capital Improvements Grants (CIG) Small Starts: medium-high rating in March 2023
- Recommended for funding in FY24 President's Budget Proposal
- Final Design: 2028



BRT Station Areas: Southern Corridor



BRT Station Areas: South



BRT Station Areas: Mid



Tryon
Rd

Renaissance Park

Dix Park

Carolina Pines

I-40

Fuller Heights

Twin Lakes

Hwy-401

Montlawn Park

Caraleigh

Wilmington
Street

West Parkland

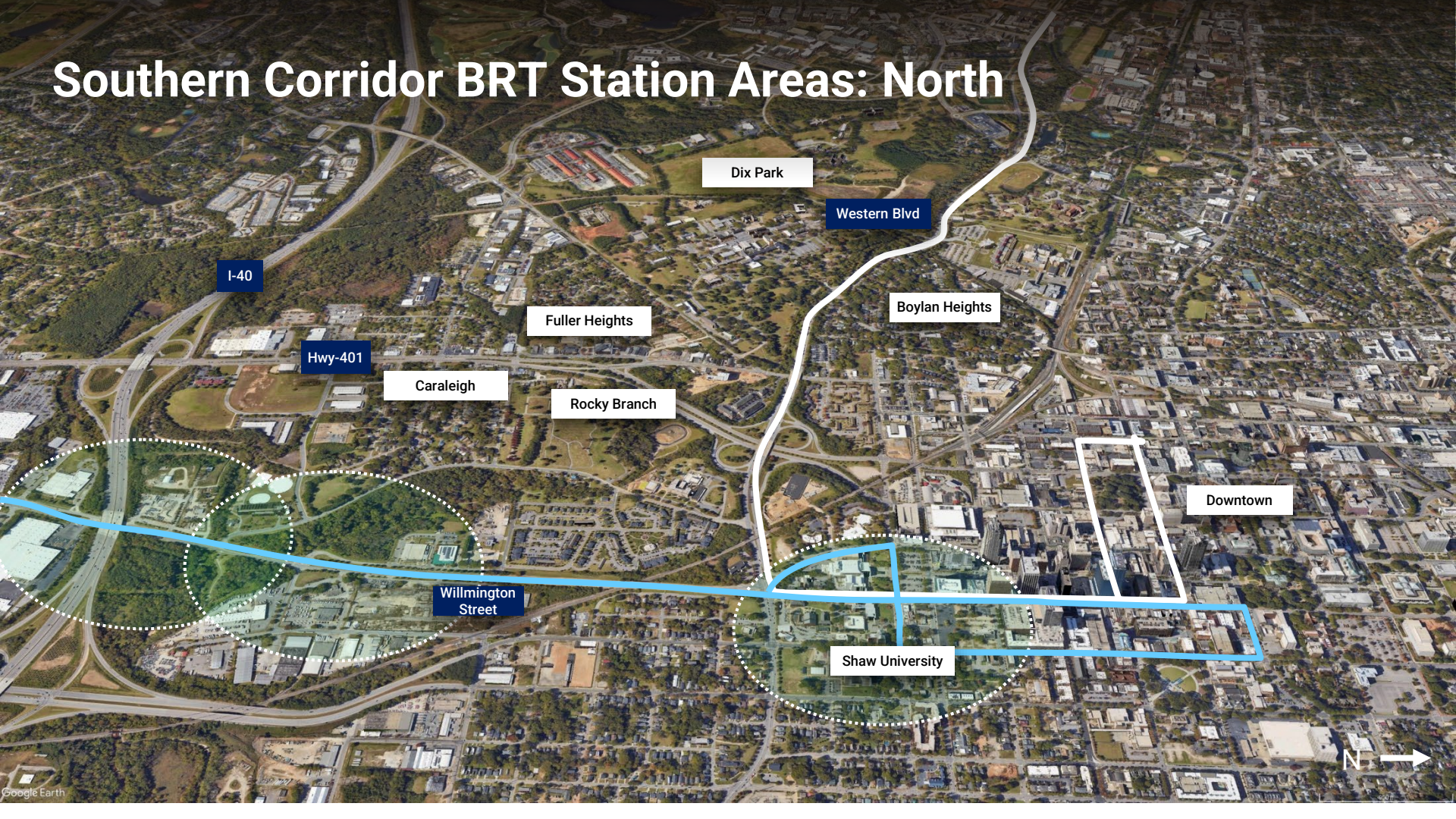
Hertford Village

Wilmington
Street

I-40



Southern Corridor BRT Station Areas: North



Three Rounds of Engagement: Southern Corridor

Engagement Round 1: Visioning

Project purpose
Existing conditions
Diverse, locally relevant examples
Concepts: Station Areas

Outcome

Increased awareness
Vision objectives
Area goals

Oct-Nov 2023

Engagement Round 2: Station Area Scenarios

Vision Concept
Refined urban design principles
Equity objectives
Development
Accessibility
Public Realm
Draft framework plans
Initial 3D digital modeling

Outcome

Station Area directions

Nov- Dec 2023

Engagement Round 3: Station Area Plans

Draft final plans
Urban design forms and character
Housing affordability, anti-displacement
Missing middle housing
Public realm and open space
Implementation Strategies
Plans, diagrams
Refined digital 3D Modeling
Eye level visualizations

Outcome

Agreed direction

Feb 2024

Breakout Discussion

What would you like to see as outcomes of this process?

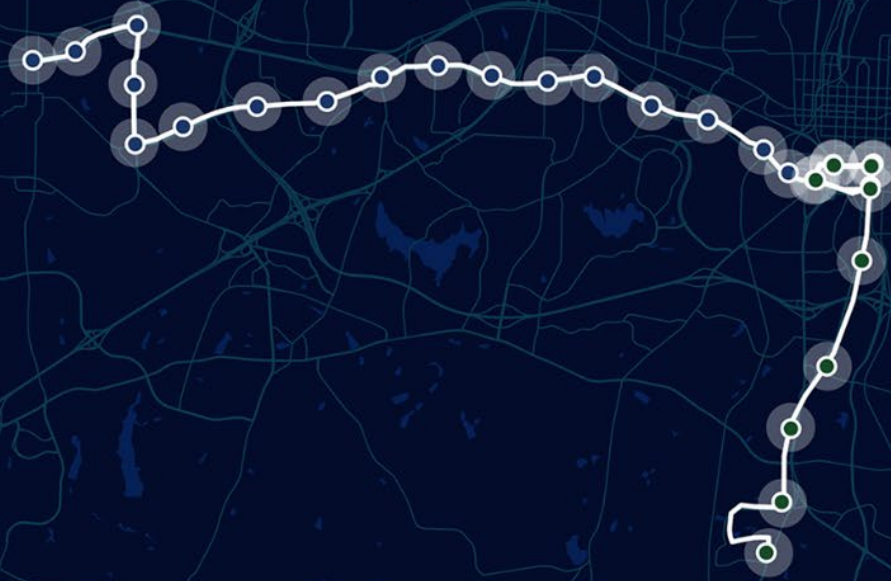
What can be learned from previous community processes?

What aspirations and issues are communities likely to raise?

Next Steps

Wake BRT

Western and Southern Station Area Planning Leader and Connector Introduction Meeting



September 27, 2023

City of Raleigh
Town of Cary

SOM

AECOM

SBFRIEDMAN

catalyst

P3 Public Participation Partners
Inform. Involve. Empower.

neighboring
concepts

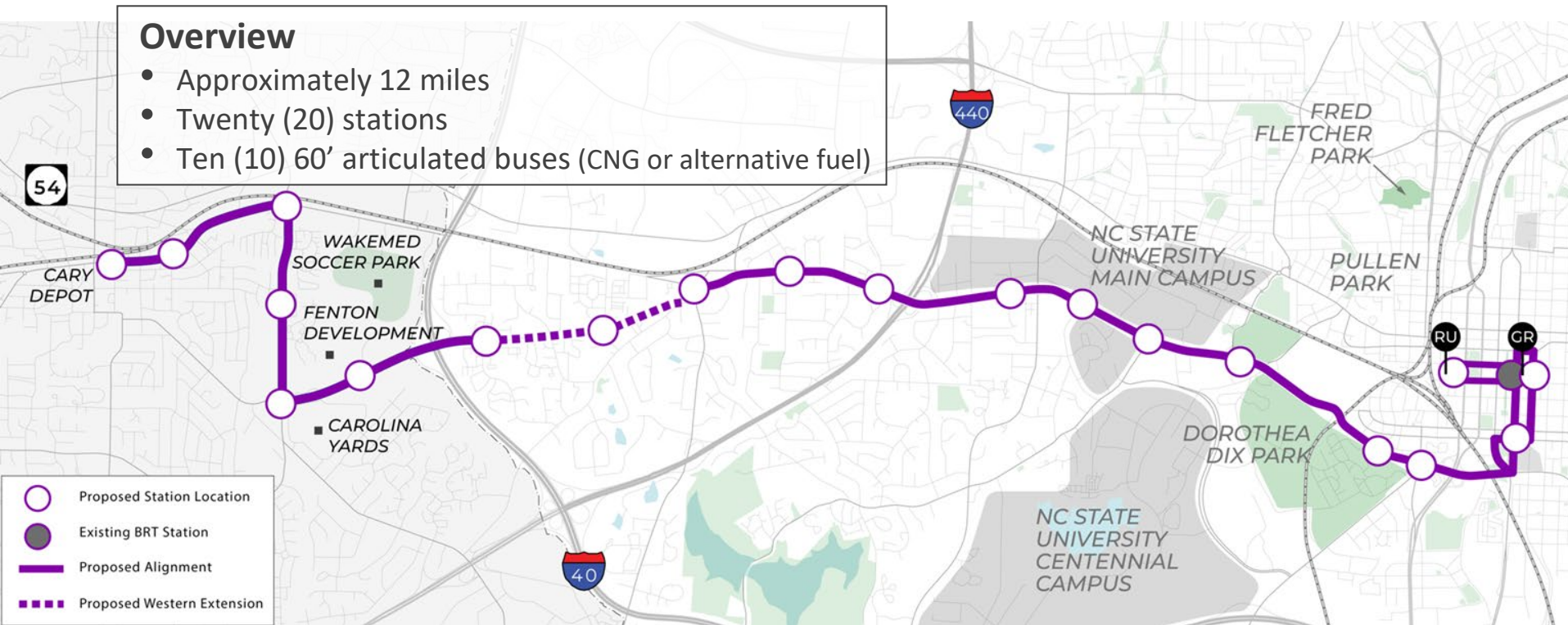
ADR Planning

5. Breakout: Western Corridor

Western Corridor / Cary BRT

Overview

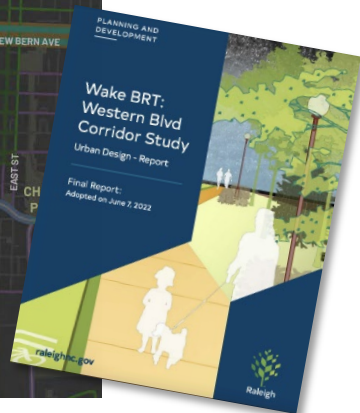
- Approximately 12 miles
- Twenty (20) stations
- Ten (10) 60' articulated buses (CNG or alternative fuel)



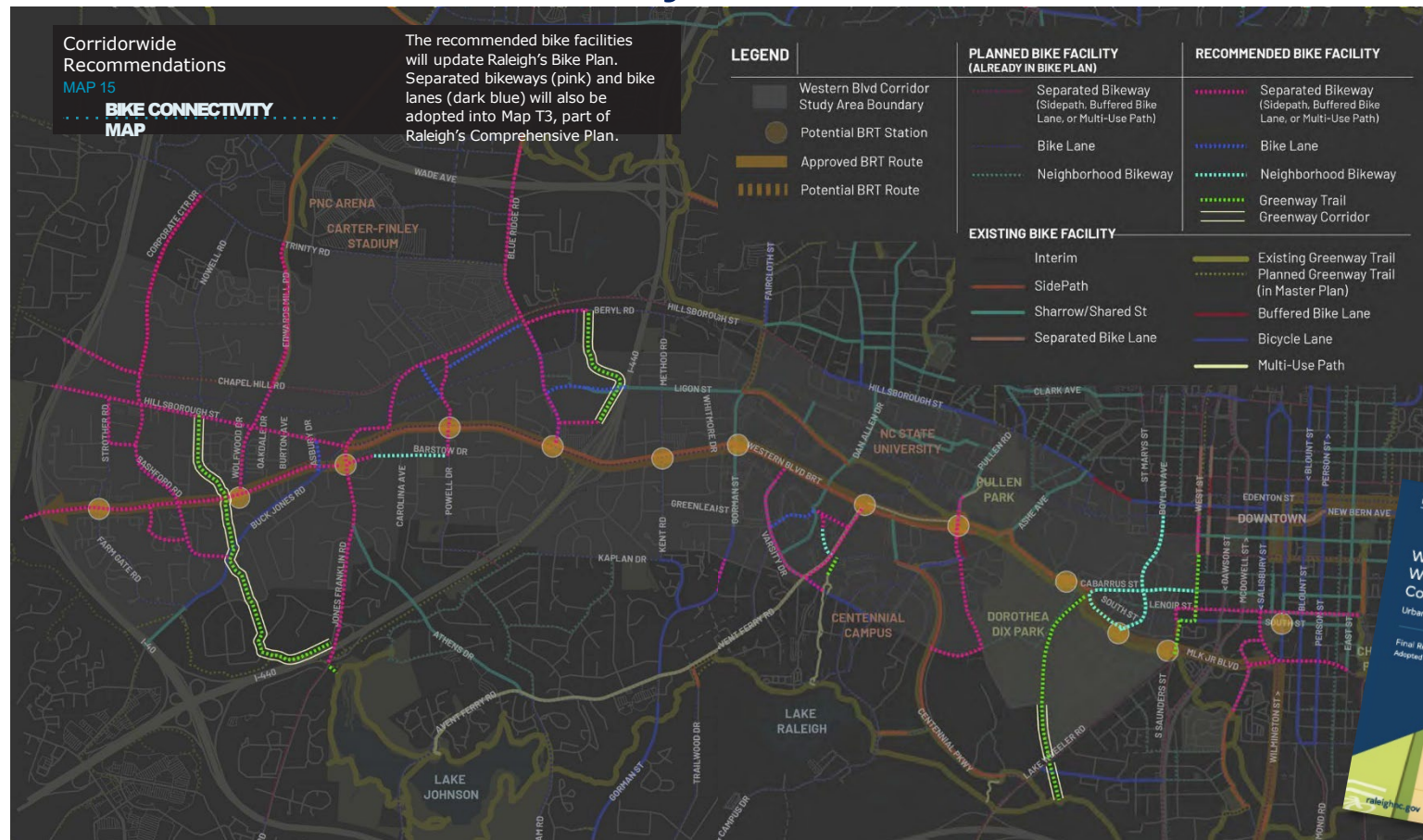
Leverage Existing Plans



Western Blvd Corridor Study 2022



Western Blvd Corridor Study 2022



Western Blvd Corridor Study 2022

Corridorwide Recommendations

MAP 16

ENVIRONMENT

AL

SUSTAINABILITY

This map identifies areas that the team identified, through high-level overview, as containing some sort of environmental opportunity. These opportunities include: greenway trails; green stormwater infrastructure;

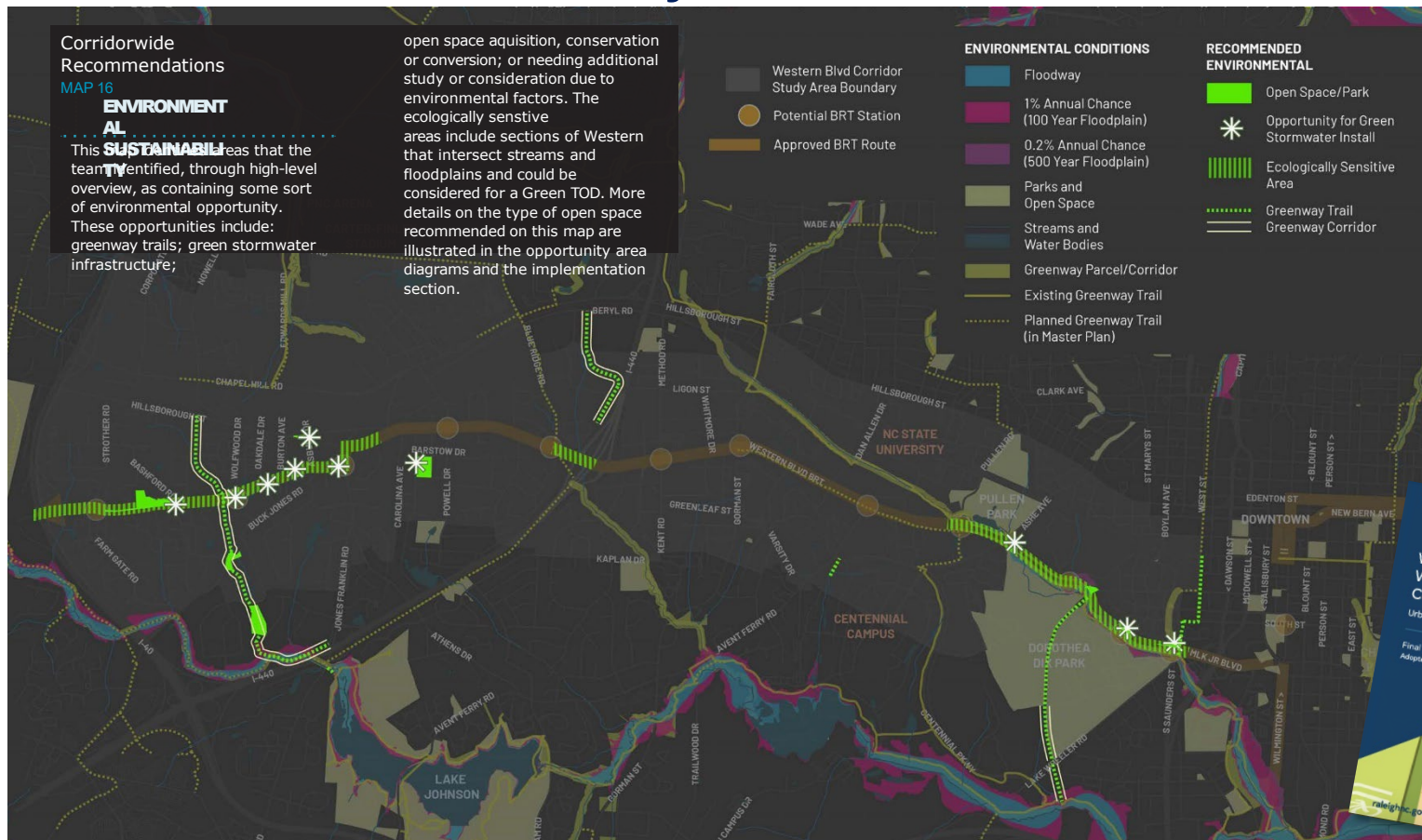
open space acquisition, conservation or conversion; or needing additional study or consideration due to environmental factors. The ecologically sensitive areas include sections of Western that intersect streams and floodplains and could be considered for a Green TOD. More details on the type of open space recommended on this map are illustrated in the opportunity area diagrams and the implementation section.

ENVIRONMENTAL CONDITIONS

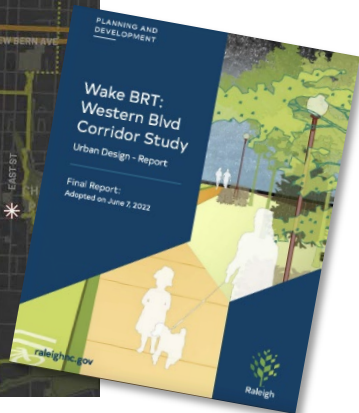
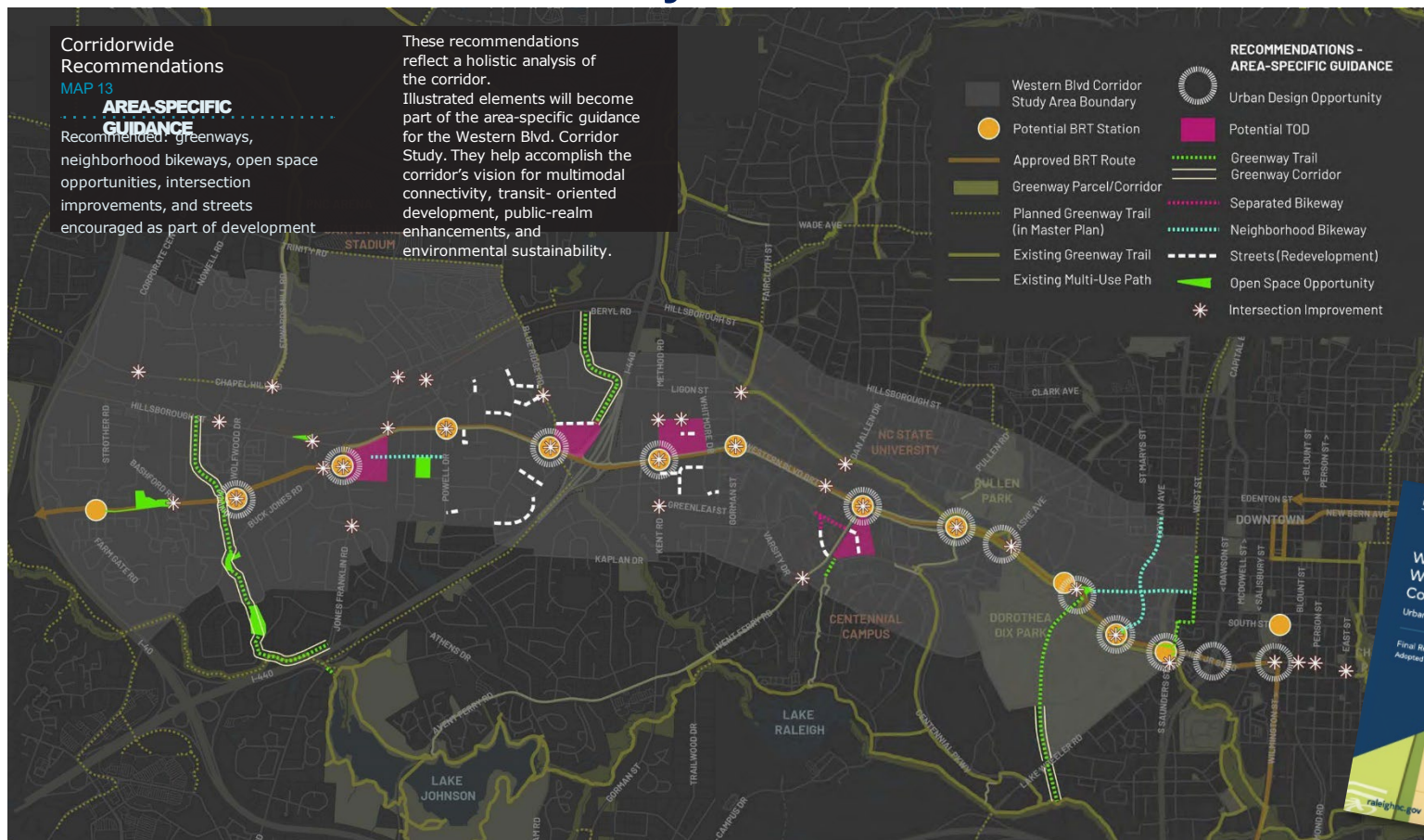
- Western Blvd Corridor Study Area Boundary
- Potential BRT Station
- Approved BRT Route
- Floodway
- 1% Annual Chance (100 Year Floodplain)
- 0.2% Annual Chance (500 Year Floodplain)
- Parks and Open Space
- Streams and Water Bodies
- Greenway Parcel/Corridor
- Existing Greenway Trail
- Planned Greenway Trail (in Master Plan)

RECOMMENDED ENVIRONMENTAL

- Open Space/Park
- Opportunity for Green Stormwater Install
- Ecologically Sensitive Area
- Greenway Trail
- Greenway Corridor



Western Blvd Corridor Study 2022



Western Corridor Capital Improvements

NCDOT Projects

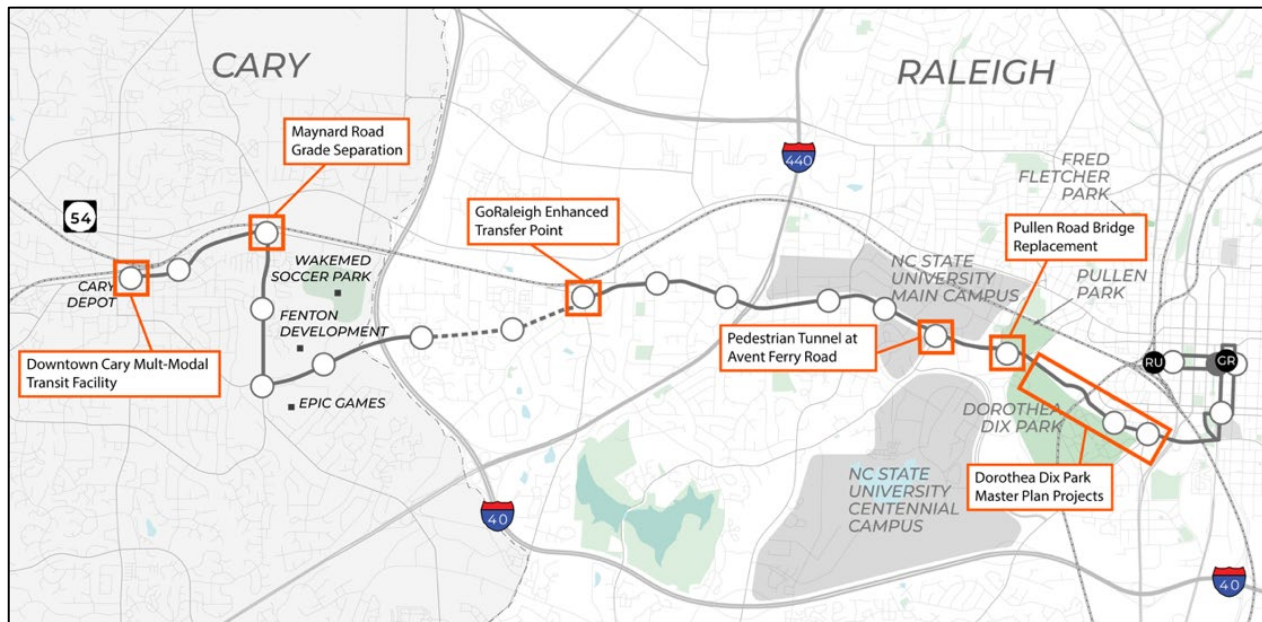
- Pullen Bridge Replacement
- Avent Ferry Pedestrian Tunnel
- Maynard Grade Separation

COR Projects

- Dix Park Master Plan Projects
- GoRaleigh Enhanced Transfer Point

Town of Cary Project

- Downtown Cary Multi-Modal Center



CARY

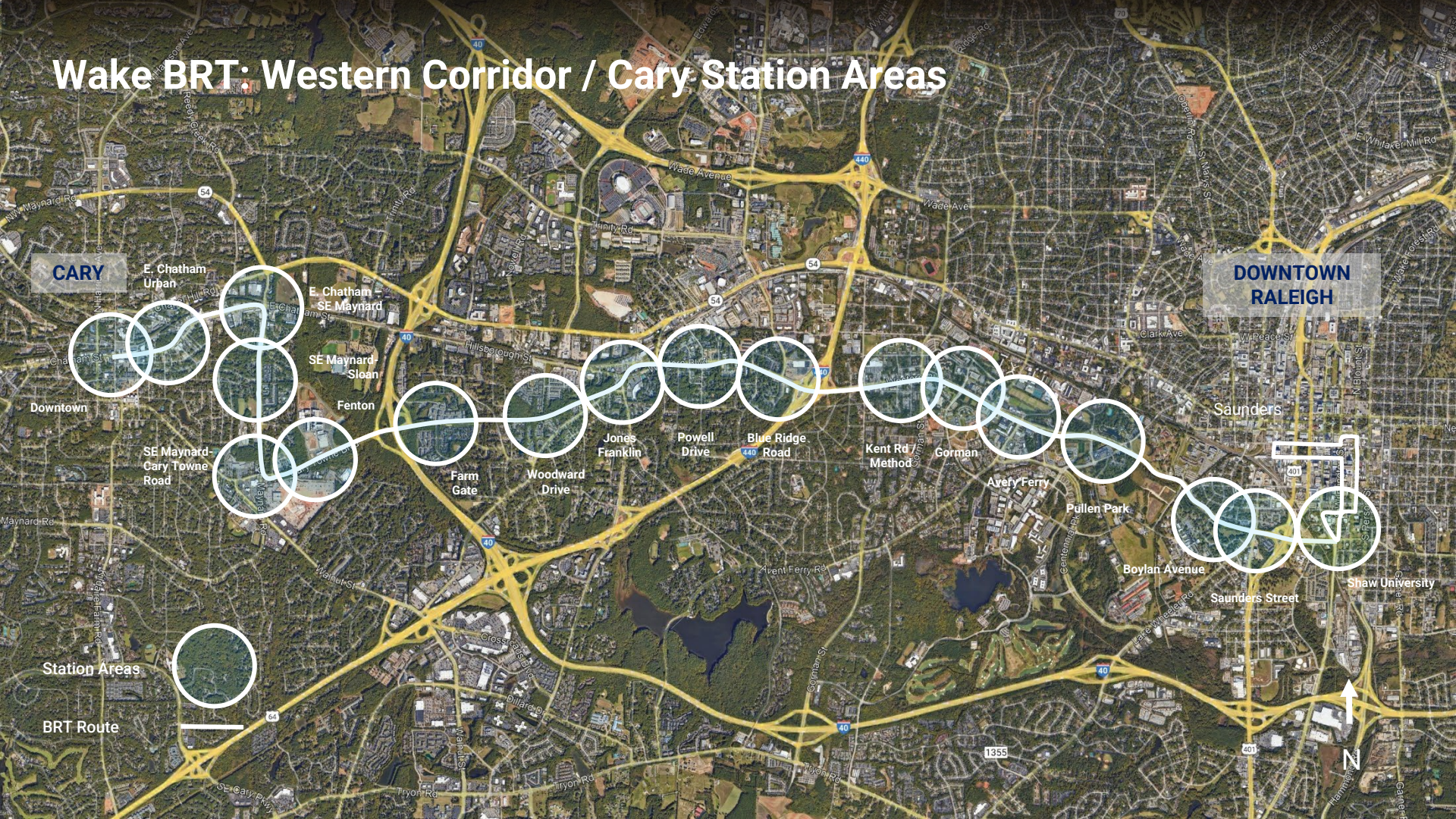
DOWNTOWN RALEIGH

Saunders

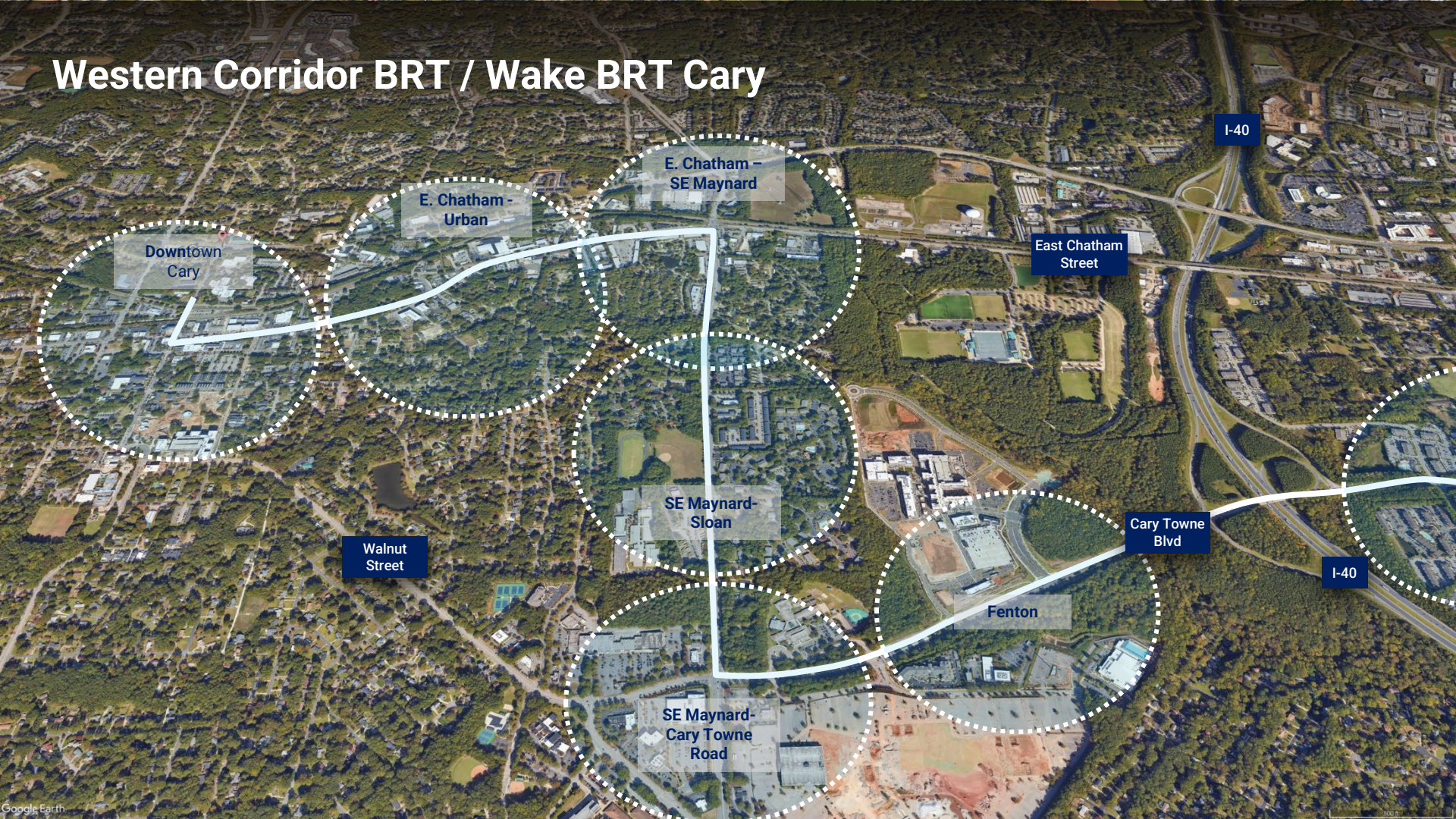
Shaw University

Station Areas

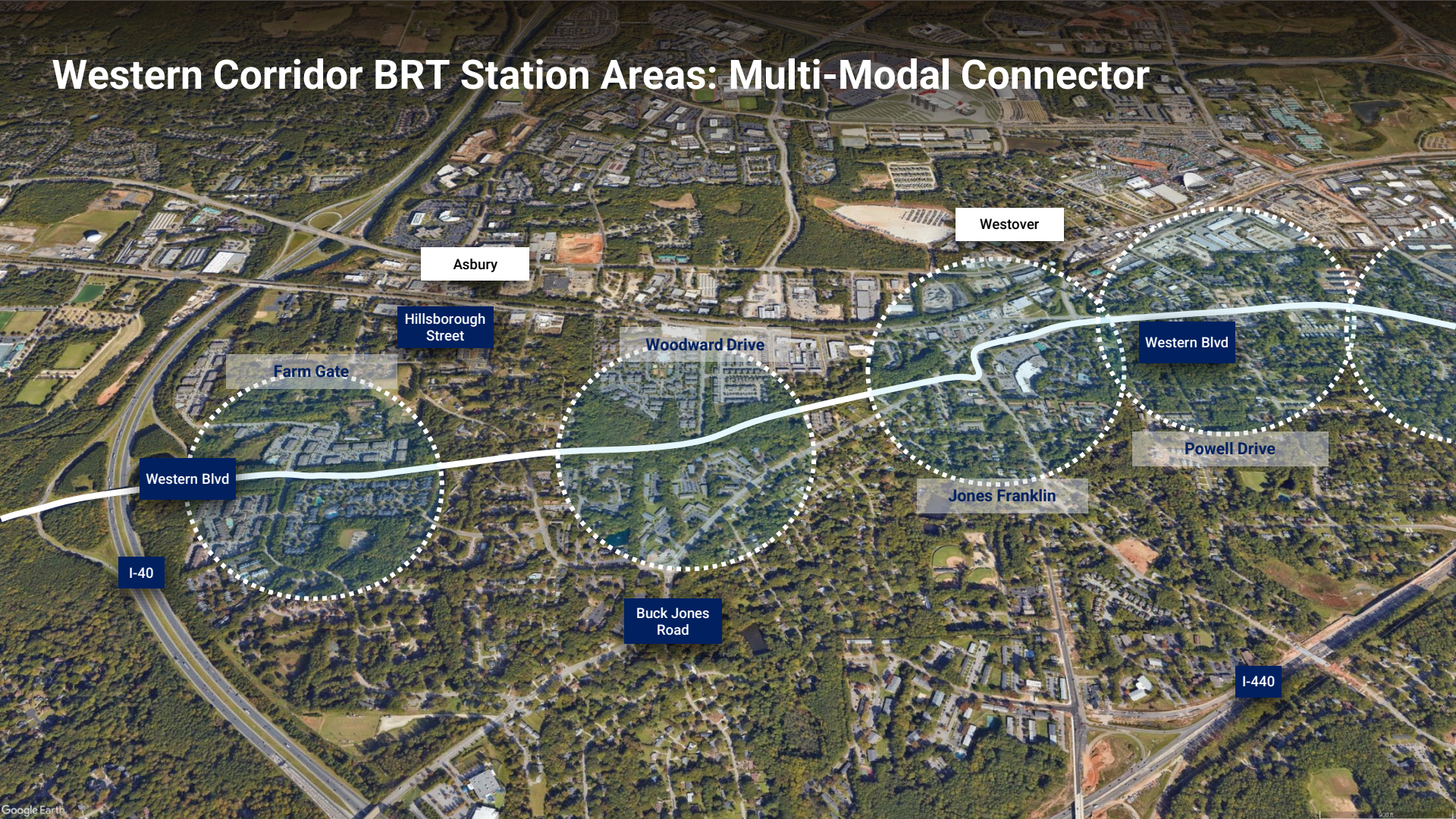
BRT Route



Western Corridor BRT / Wake BRT Cary



Western Corridor BRT Station Areas: Multi-Modal Connector



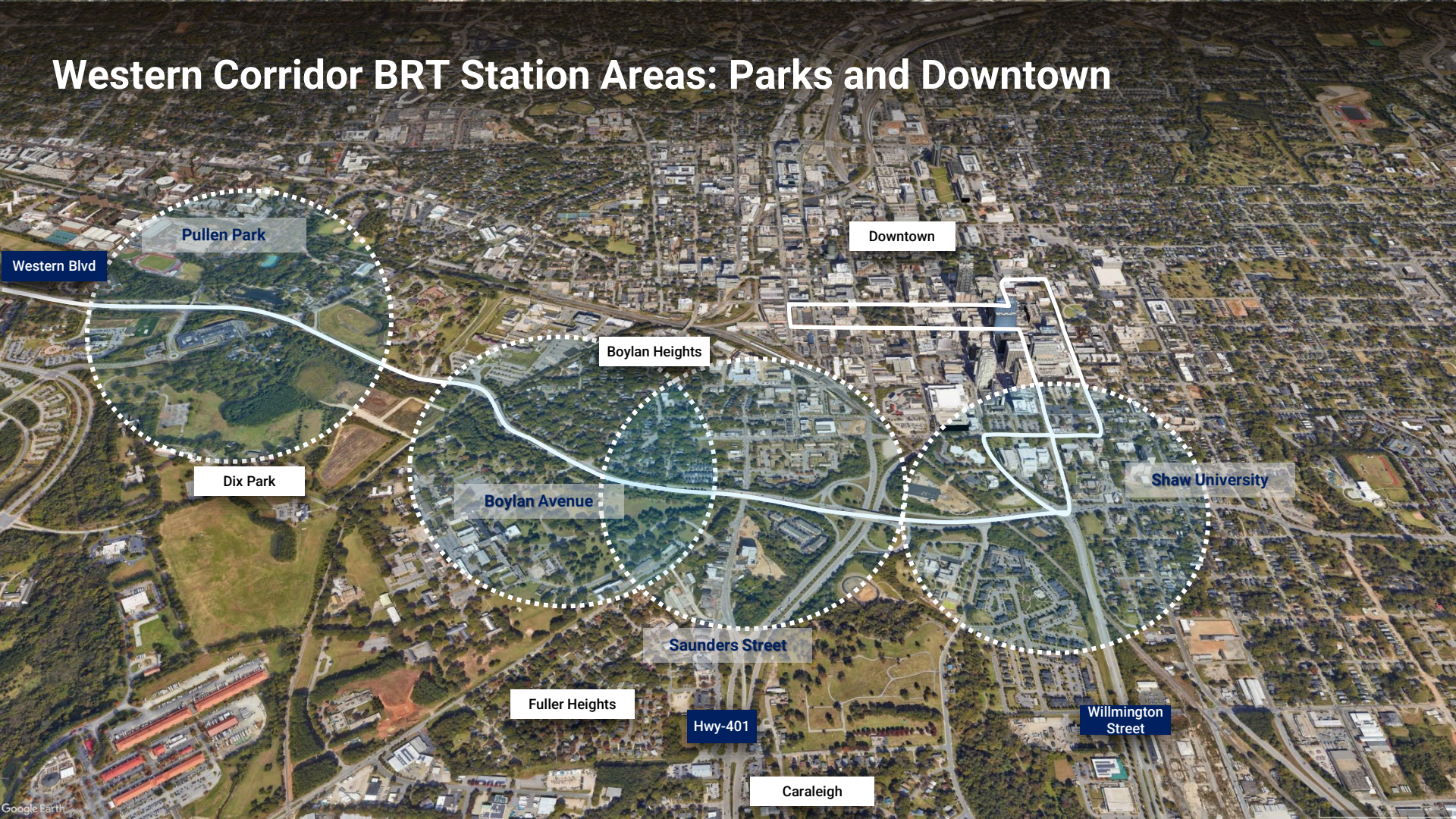
Western Corridor BRT Station Areas: Multi-Modal Connector / Kent-Method



Western Corridor BRT Station Areas: Method / Kent – Campus - Parks



Western Corridor BRT Station Areas: Parks and Downtown



Pullen Park

Downtown

Western Blvd

Boylan Heights

Dix Park

Boylan Avenue

Shaw University

Saunders Street

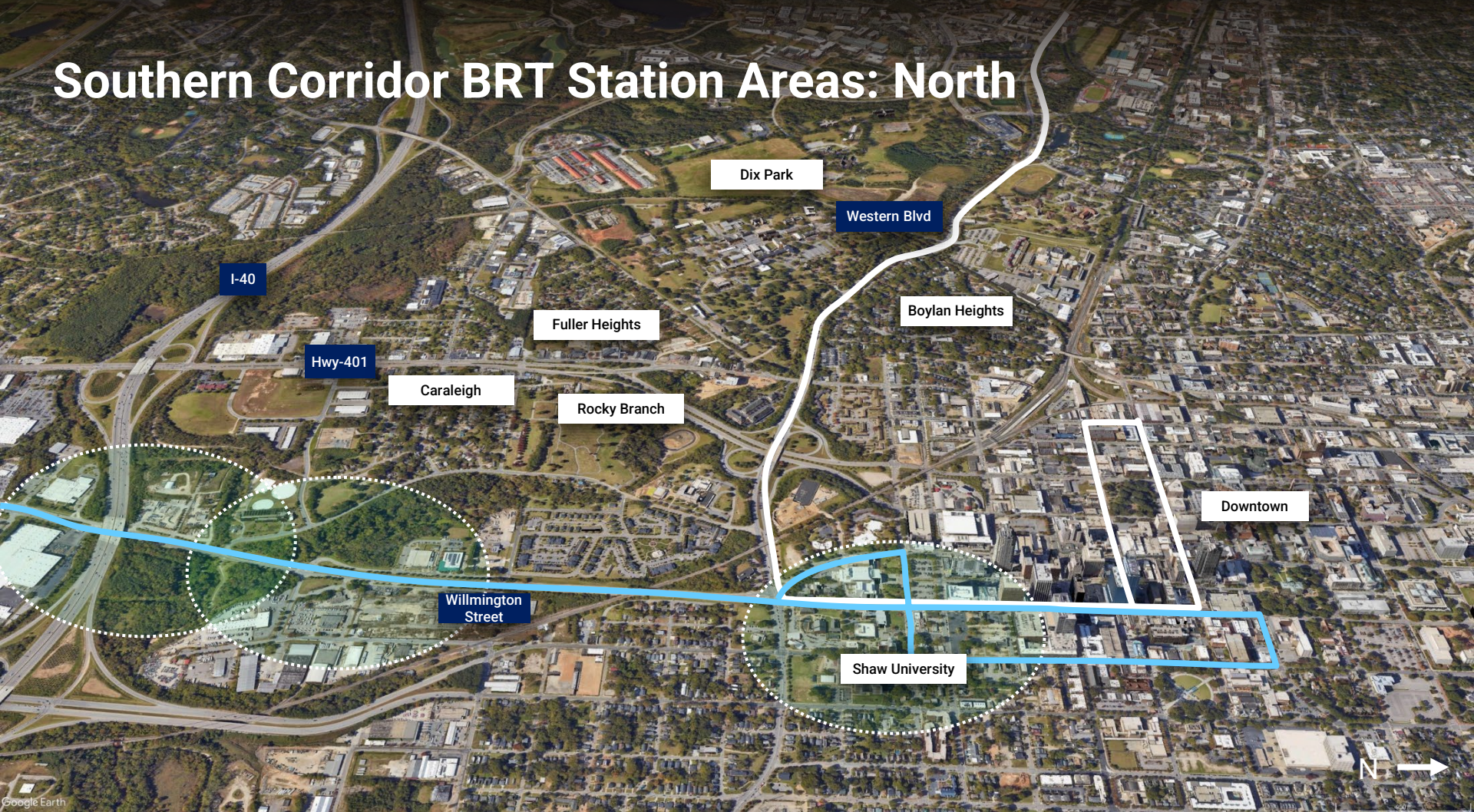
Fuller Heights

Hwy-401

Caraleigh

Willington Street

Southern Corridor BRT Station Areas: North



Three Rounds of Engagement: Southern Corridor

Engagement Round 1: Visioning

Project purpose
Existing conditions
Diverse, locally relevant examples
Concepts: Station Areas

Outcome

Increased awareness
Vision objectives
Area goals

Oct-Nov 2023

Engagement Round 2: Station Area Scenarios

Vision Concept
Refined urban design principles
Equity objectives
Development
Accessibility
Public Realm
Draft framework plans
Initial 3D digital modeling

Outcome

Station Area directions

Nov- Dec 2023

Engagement Round 3: Station Area Plans

Draft final plans
Urban design forms and character
Housing affordability, anti-displacement
Missing middle housing
Public realm and open space
Implementation Strategies
Plans, diagrams
Refined digital 3D Modeling
Eye level visualizations

Outcome

Agreed direction

Feb 2024

Breakout Discussion

What would you like to see as outcomes of this process?

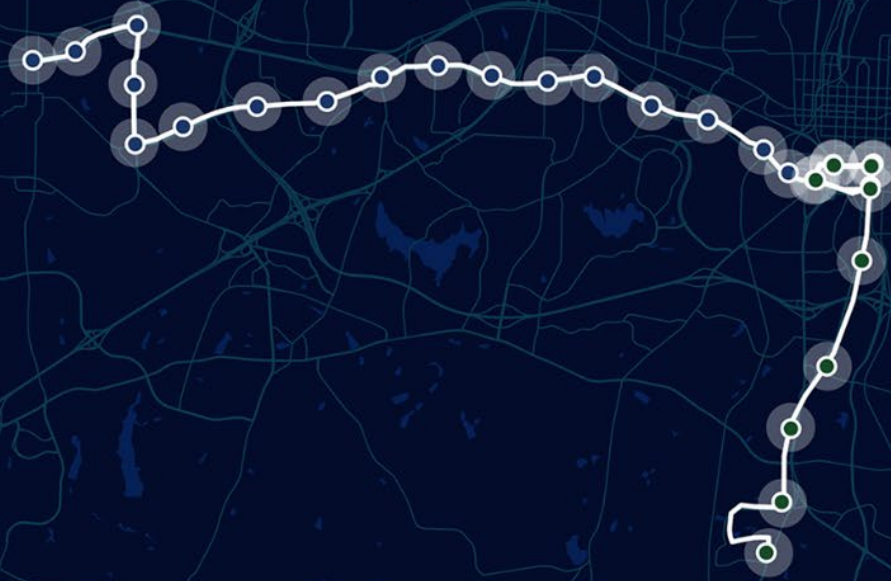
What can be learned from previous community processes?

What aspirations and issues are communities likely to raise?

Next Steps

Wake BRT

Western and Southern Station Area Planning Leader and Connector Introduction Meeting



September 27, 2023

City of Raleigh
Town of Cary

SOM

AECOM

SBFRIEDMAN

catalyst

P3 Public Participation Partners
Inform. Involve. Empower.

neighboring
concepts

ADR Planning