

# PULLEN ARTS CENTER IMPROVEMENTS PROJECT



**PUBLIC PRESENTATION**

**10.27.2016**



Parks,  
Recreation and  
Cultural Resources  
[parks.raleighnc.gov](http://parks.raleighnc.gov)

**DHM DESIGN**

**CLEARSCAPES**  
ARCHITECTURE + ART

## **MEETING AGENDA**

- 6:00 – 6:05    5 minutes - Introduction by James Marapoti**
- 6:05 – 6:10    5 minutes - Overview by Steve Schuster**
- 6:10 – 6:25    15 minutes - Review of Architectural Design by Clearscapes**
- 6:25– 6:45    20 minutes - Questions & Discussion Period**
- 6:45– 7:00    15 Minutes - Review of Site Design by DHM**
- 7:00– 7:20    20 minutes - Questions & Discussion Period**
- 7:20– 7:50    30 minutes - Breakout Session**
- 7:50 – 8:00    10 minutes - Closing Remarks by Steve Schuster**

## **CITIZEN PLANNING COMMITTEE MEMBERS**

1. **Patrick Beggs** - Pullen Arts Center Patron
2. **Bill Belvin, Brent Belvin & Vivian Burnam** - Pullen Heirs
3. **Katherine Cherry** - Pullen Arts Center Patron
4. **Laurent de Comarmond** - Arts Commission Representative
5. **Gary Gardenhire** - Theatre in the Park Board Member
6. **Al Headen** - Pullen Arts Center Patron
7. **Roger Manley** - Gregg Museum of Art and Design Representative
8. **Jeff Murison** - Hillsborough Street Community Services Corporation
9. **Jessica Puckett** – Pullen Park Master Plan Committee Member
10. **Sallie Ricks** - Pullen Arts Center Patron
11. **Amy Veatch** – Roundabout Art Collective Representative
12. **Shamsa Visone** – Wedge Garden Representative
13. **Vincent Whitehurst** - Pullen Park Neighborhood Resident
14. **Malinda Bird Wilson** - Pullen Arts Center Patron
15. **David Millsaps** – Parks, Recreation and Greenway Advisory Board Member
16. **Clodagh Lyons-Bastian** - Parks, Recreation and Greenway Advisory Board Member

**PULLEN ARTS CENTER IMPROVEMENTS PROJECT**

## PULLEN PARK MASTER PLAN GOALS – 4 July 2001



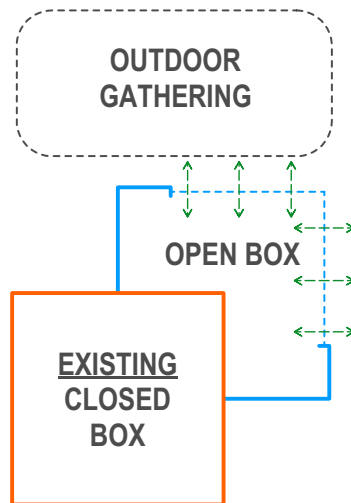
- Preserve and enhance open space
- Provide addition and improvements to the Arts Center
- Provide new Arts Plaza between the Arts Center and Theatre in the Park / The Armory
- Provide organized and efficient parking lots

**PULLEN ARTS CENTER IMPROVEMENTS PROJECT**

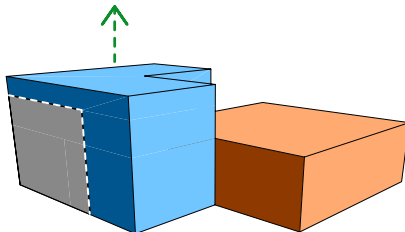
## **ARTS CENTER ASPIRATIONS**

- Create spaces for gathering and community building
- Display and exposure to artwork throughout building
- Provide the facility for program extension into outdoor spaces
- Utilize park environment for inspiration and recreation

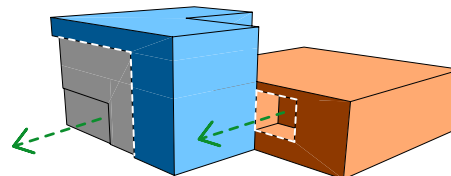
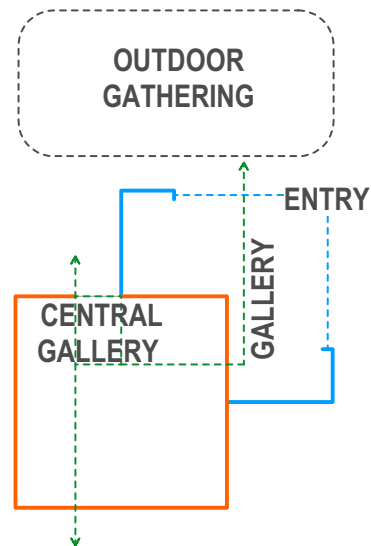
# PLAN AND MASSING DIAGRAMS



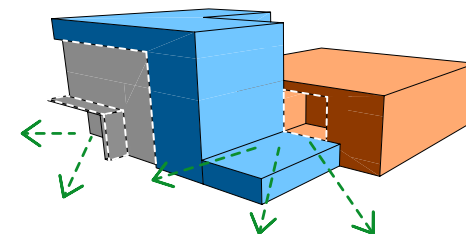
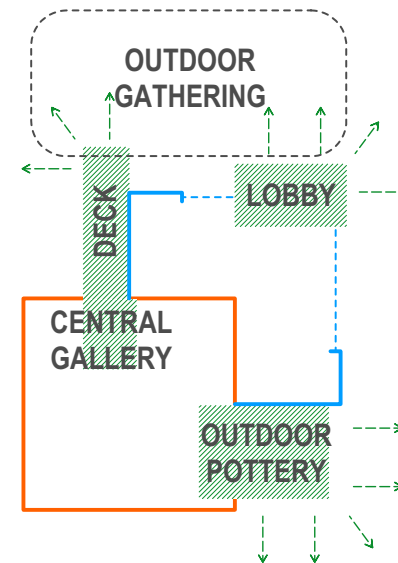
RAISE HEIGHT



1. ESTABLISH PRESENCE & SHOWCASE ART



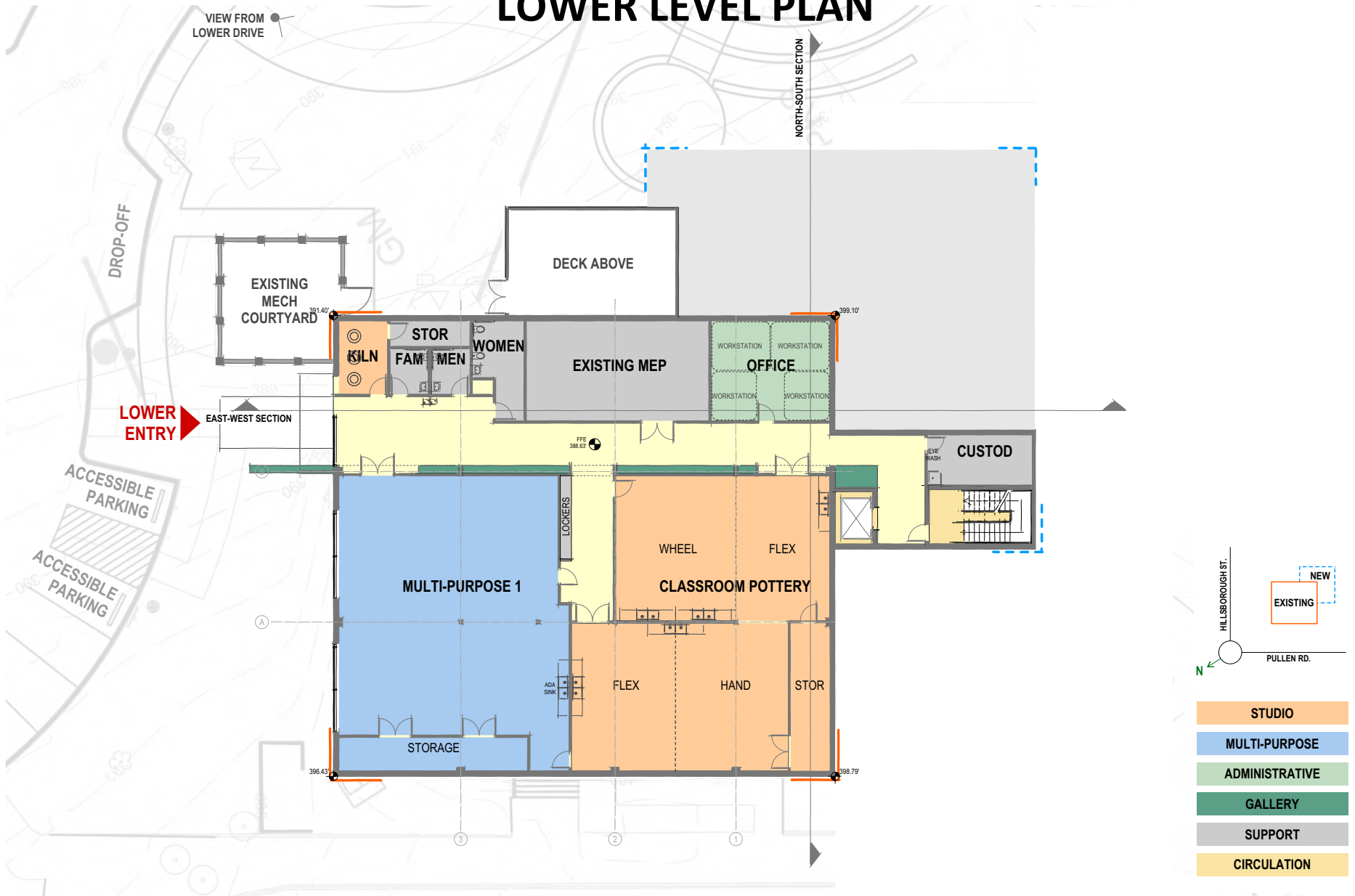
2. EXHIBIT ART THROUGHOUT BUILDING



3. CONNECT KEY SPACES TO OUTDOORS

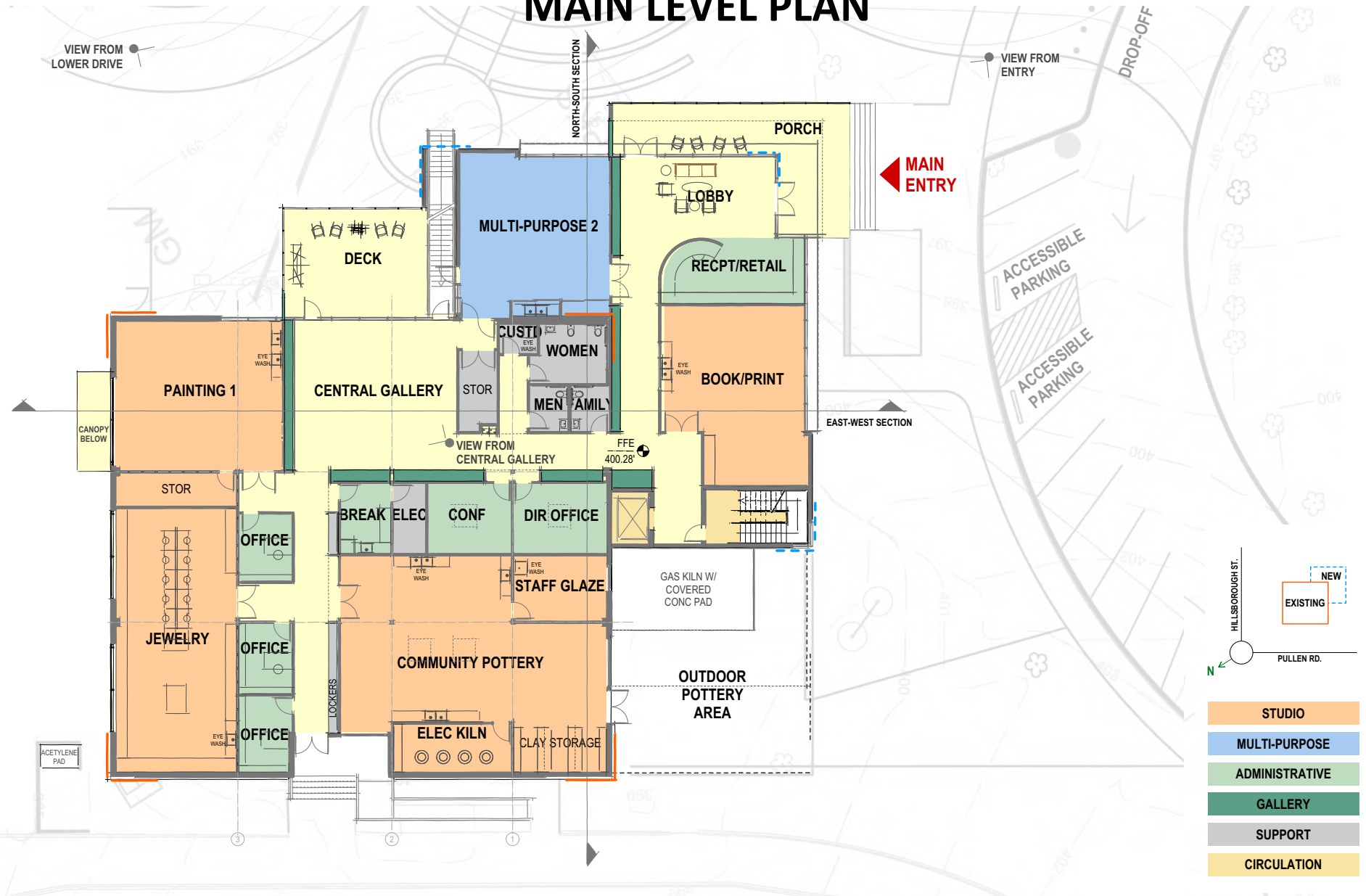
PULLEN ARTS CENTER IMPROVEMENTS PROJECT

# LOWER LEVEL PLAN



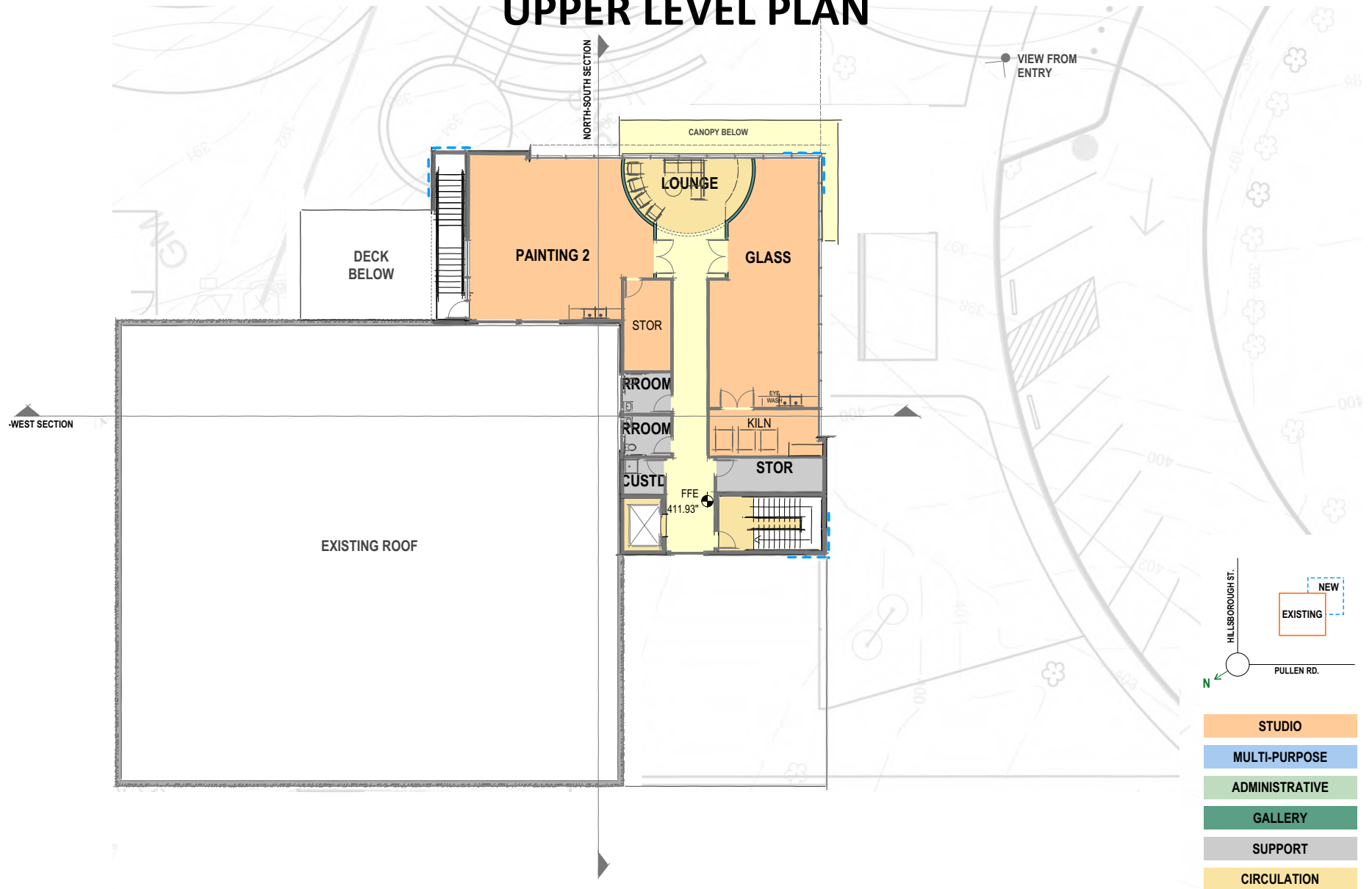
## PULLEN ARTS CENTER IMPROVEMENTS PROJECT

# MAIN LEVEL PLAN



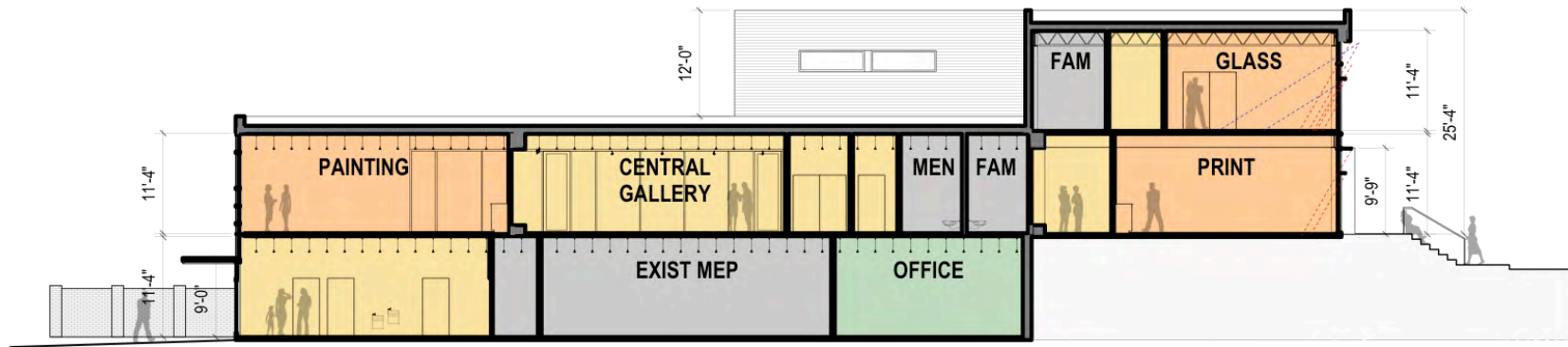
**PULLEN ARTS CENTER IMPROVEMENTS PROJECT**

# UPPER LEVEL PLAN



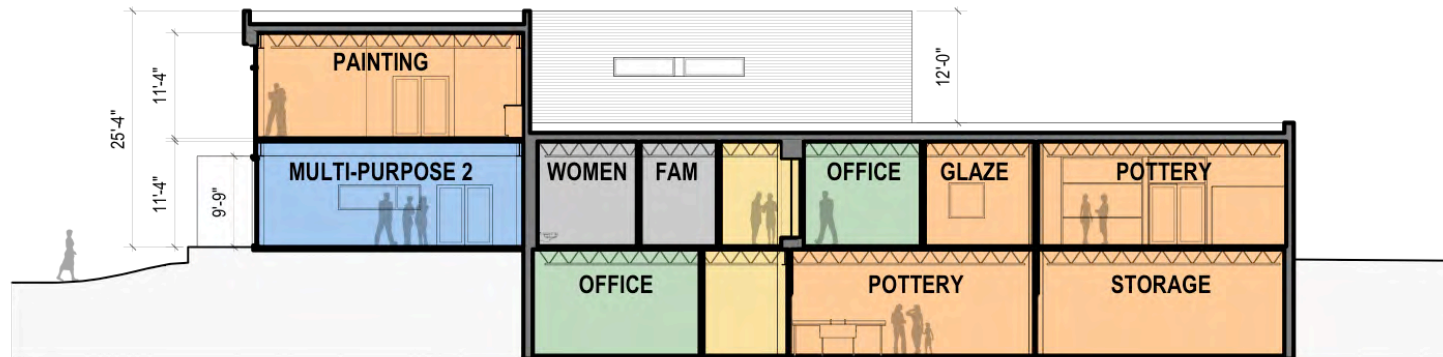
**PULLEN ARTS CENTER IMPROVEMENTS PROJECT**

# BUILDING SECTIONS



**EAST-WEST SECTION**

Scale: 1/8" = 1'-0"



**NORTH-SOUTH SECTION**

Scale: 1/8" = 1'-0"

**PULLEN ARTS CENTER IMPROVEMENTS PROJECT**

## EXISTING AND NEW AREA COMPARISON

<b>LEGEND</b>	<b>CURRENT</b>	<b>PROPOSED</b>	<b>REMARKS</b>
<b>STUDIO</b>	≈ 6,100 SF	≈ 8,600 SF	40% INCREASED AREA
<b>MULTI-PURPOSE</b>	≈ 2,000 SF	≈ 3,700 SF	85% INCREASED AREA
<b>STAFF / ADMINISTRATION</b>	≈ 1,600 SF	≈ 1,600 SF	HAS LARGER OFFICES
<b>LOBBY/GALLERY/ CIRCULATION</b>	≈ 1,800 SF	≈ 3,800 SF	110% INCREASED AREA
<b>BUILDING OUTDOOR SPACES</b>	≈ 0 SF	≈ 2,500 SF	PORCH, DECK & OUTDOOR POTTERY AREA

**PULLEN ARTS CENTER IMPROVEMENTS PROJECT**

## 3D SKETCH VIEW OF GALLERY SPACE



**PULLEN ARTS CENTER IMPROVEMENTS PROJECT**

## 3D SKETCH VIEW FROM MAIN ENTRY



**PULLEN ARTS CENTER IMPROVEMENTS PROJECT**

## 3D SKETCH VIEW FROM LOWER DRIVE



**PULLEN ARTS CENTER IMPROVEMENTS PROJECT**

## MAJOR BUILDING IMPROVEMENTS

ISSUE	EXISTING	PROPOSED	REMARKS
<b>Building size</b>	<b>15,000 SF</b>	<b>22,500 SF</b>	<b>50% increase</b>
Elevator	None	1	Will provide accessibility between floors
Visibility from street	Not very visible		3 story addition will be more prominent and visible from street
<b>Location of main entrance</b>	<b>Not clear</b>		<b>Main entrance clearly visible from parking area</b>
Lobby / common space	Small		Larger space with visibility to the parking and outdoor areas
Art display	Limited area		Artwork can be displayed throughout the building
Delivery of clay materials	Difficult		Delivery on the south side right into clay storage room

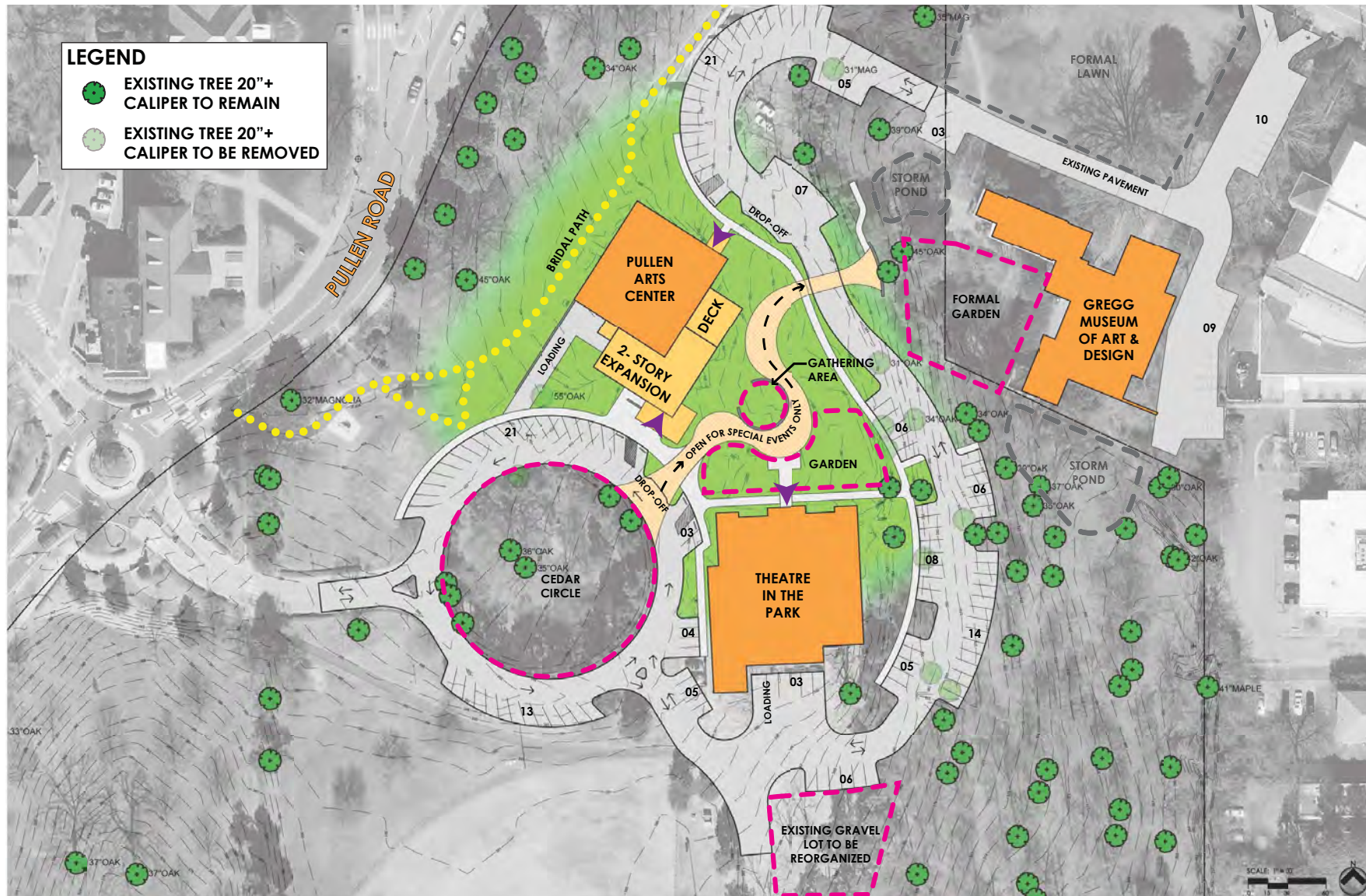
### PULLEN ARTS CENTER IMPROVEMENTS PROJECT

# EXISTING SITE CONDITION



## PULLEN ARTS CENTER IMPROVEMENTS PROJECT

# PROPOSED SITE CONCEPT



## PULLEN ARTS CENTER IMPROVEMENTS PROJECT

# CONCEPTUAL SITE DESIGN



## PULLEN ARTS CENTER IMPROVEMENTS PROJECT

# OUTDOOR GATHERING AREA



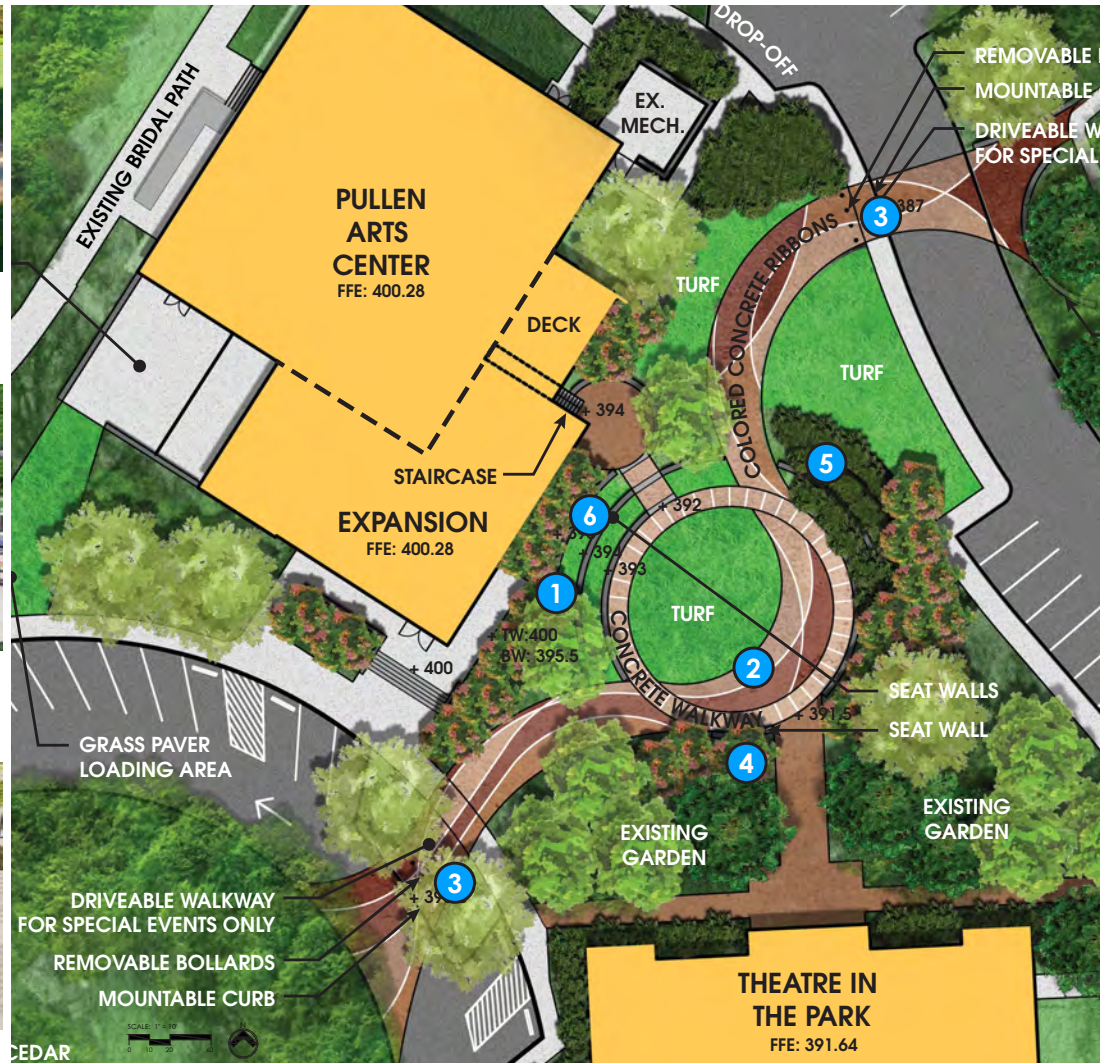
Seated Wall



Driveable Walkway & Plaza



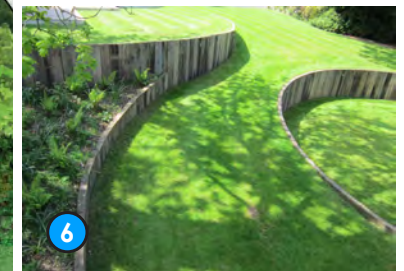
Curb & Paving Pattern



Seating Areas



Landscaped Terraces



Turf Ramps & Walls

PULLEN ARTS CENTER IMPROVEMENTS PROJECT

**PARKING**  
 Pullen Arts Center  
 100': 13 spaces  
 200': 57 spaces  
 Theatre in the Park  
 100': 7 spaces  
 200': 34 spaces  
**Total: 73 spaces**

The aerial site plan shows Pullen Park with several key features and proposed developments. A thick black dashed line outlines the park's boundary. Inside, a winding road labeled 'PULLEN ROAD' runs along the left side. To the right, 'HILLSBOROUGH STREET' is visible. The plan includes two main building footprints: the 'PULLEN ARTS CENTER' (a yellow rectangle) and the 'THEATRE IN THE PARK' (a larger yellow rectangle). To the right of the theatre is the 'GREGG MUSEUM OF ART & DESIGN' (a yellow rectangle). A 'SPORTS FIELD' is located at the bottom center, and an 'EXISTING STORM POND' is on the right. 'CEDAR CIRCLE' is a small area near the theatre. 'EXISTING TREES' are marked in several locations. Proposed parking areas are indicated by dashed lines and labels: '200' RADIUS - 46 SPACES' (pink dashed line), '100' RADIUS - 0 SPACES' (pink dashed line), '100' RADIUS - 13 SPACES' (pink dashed line), '200' RADIUS - 54 SPACES' (pink dashed line), '100' RADIUS - 7 SPACES' (pink dashed line), and '200' RADIUS - 34 SPACES' (orange dashed line). Specific dimensions are also noted: '60 FEET' near the arts center, '160 FEET' near the theatre, and '28 FEET' near the theatre. A 'GRAVEL AREA' is located near the theatre. A north arrow and a scale bar (0, 10, 20, 30, 40, 50, 60, 70, 80, 90, 100 feet) are in the bottom right corner.

## PULLEN ARTS CENTER IMPROVEMENTS PROJECT

# PROPOSED PARKING



## PULLEN ARTS CENTER IMPROVEMENTS PROJECT

## MAJOR SITE IMPROVEMENTS

ISSUE	EXISTING	PROPOSED	REMARKS
Parking spaces	73	110	Gain of 37 spaces
Parking within 100' of main entrance	13	23	More parking close to entry
Distance to main entrance	150'	88'	Entrance now visible from parking area
Drop-off / loading	None	2	at north and south entrances
Outdoor art making space	None	1	Designated area on the south side of building
Outdoor multi-function space	None	1	Central space that provides connectivity to all buildings
Truck loading zone for TIP	Difficult		Improved and expanded

### PULLEN ARTS CENTER IMPROVEMENTS PROJECT

# PROJECT TIMELINE

## PHASE I – CONCEPT STUDY

- March, 24 2016                      Last Public Meeting #3
- May 2016                              Present to PRGAB
- June 2016                              Present to Raleigh City Council

## PHASE II – DESIGN & IMPLEMENTATION

- **OCTOBER 2016**                      **Complete Schematic Design Phase**
- January 2017                          Complete Design Development Phase
- June 2017                              Complete Construction Documents and Permit Review Phase
- August 2017                          Receive Bids
- Fall 2017                                City Council Award Construction Contract
- Winter 2017                          Construction Begins

