

PULLEN ARTS CENTER IMPROVEMENTS PROJECT

PARKS, RECREATION AND GREENWAY ADVISORY BOARD
PRESENTATION 01.19.2017



RALEIGH Parks,
Recreation and
Cultural Resources
parks.raleighnc.gov

DHM DESIGN

CLEARSCAPES
ARCHITECTURE + ART

PULLEN PARK MASTER PLAN GOALS – 4 July 2001



- Preserve and enhance open space
- Provide addition and improvements to the Arts Center
- Provide new pedestrian Arts Plaza between the Arts Center and Theatre in the Park
- Provide organized and efficient parking lots

PULLEN ARTS CENTER IMPROVEMENTS PROJECT

PROJECT TIMELINE

CONCEPTUAL STUDY PHASE

- June 2015 Begin Conceptual Study Phase
- March 2016 Last Public Meeting #3
- May 2016 Present to PRGAB
- June 2016 Present to Raleigh City Council

DESIGN & IMPLEMENTATION PHASE

- Fall 2016 End of Schematic Design Phase
- **January 2017** **Presentation to PRGAB**
- February 2017 Presentation to Raleigh City Council
- March 2017 End of Design Development Phase
- August 2017 End of Construction Documents and Permit Review Phase
- October 2017 Receive Bids
- Winter 2017 City Council Award Construction Contract
- February 2018 Projected Start of Construction Phase

Conceptual Study Phase - Community Outreach Efforts

Project Websites: Regular updates with new information

Social Media Outreach: Information broadcasted through the City's .Gov newsletters

Stakeholder, Community & CPC Surveys: Online surveys to solicit public input was open for 6 weeks and 124 surveys were completed

Stakeholder Engagement: Have had many meetings with stakeholders including Pullen Heirs, original Pullen Park Master Plan Committee member from 2001, CPC members, Gregg Museum, Theatre in the Park, Pullen Arts Center staff, PAC instructors, PAC users, Hillsborough Citizens Advisory Council, and the general public

Public Meetings: Have conducted three public meetings

Schematic Design Phase - Community Outreach Efforts

- **One Public Meeting** on 10/27, 2016
- **One CPC Meeting** on 10/19, 2016
- **One Meeting with Gregg Museum and NCSU** on 9/30, 2016
- **Six Meetings with Theatre in the Park** on 10/13, 10/21, 10/25, 11/3, 11/15, 12/13, 2016

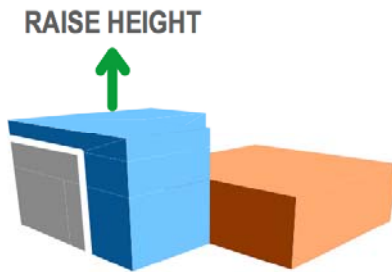
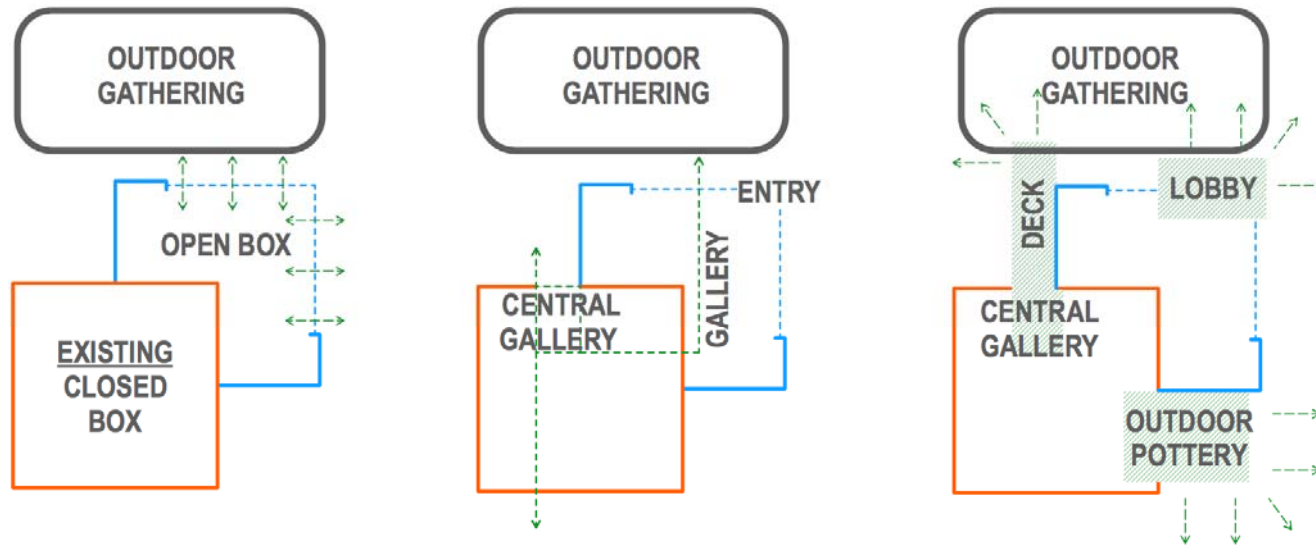
PUBLIC INPUT & ARTS CENTER ASPIRATIONS

- Maintain the park setting
- Provide convenient parking to entrances
- Minimize vehicular circulation between buildings
- Provide outdoor area for relaxation and conversation
- Create an environment for community building
- Display artwork throughout building
- Provide program extension into outdoor spaces

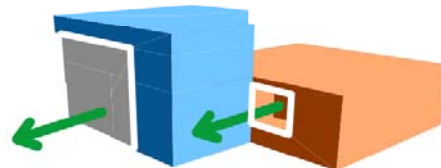
10/27/16 PUBLIC MEETING DISCUSSIONS

- Need for covered drop off and access to front door
- Minimal impact to existing Theatre in the Park garden
- Parking operation and management of parking spaces
- More parking and convenient parking for loading art supplies

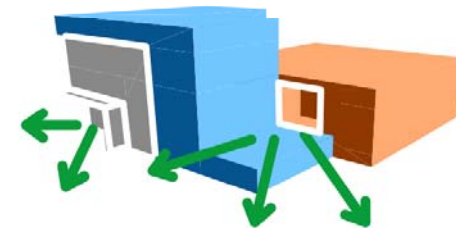
PLAN AND MASSING DIAGRAMS



1. ESTABLISH PRESENCE & SHOWCASE ART



2. EXHIBIT ART THROUGHOUT BUILDING



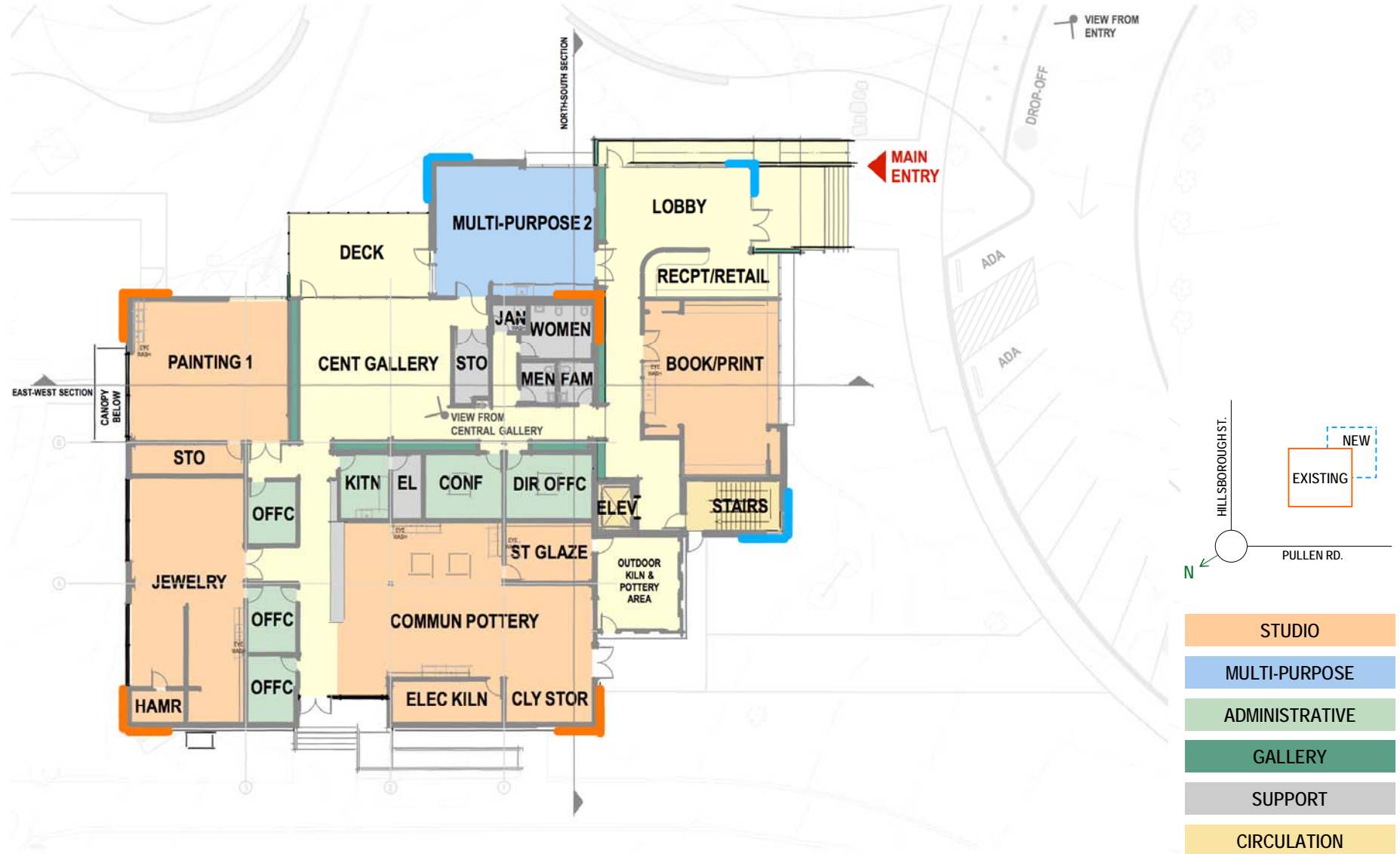
3. CONNECT KEY SPACES TO OUTDOORS

PULLEN ARTS CENTER IMPROVEMENTS PROJECT

PULLEN ARTS CENTER IMPROVEMENTS PROJECT

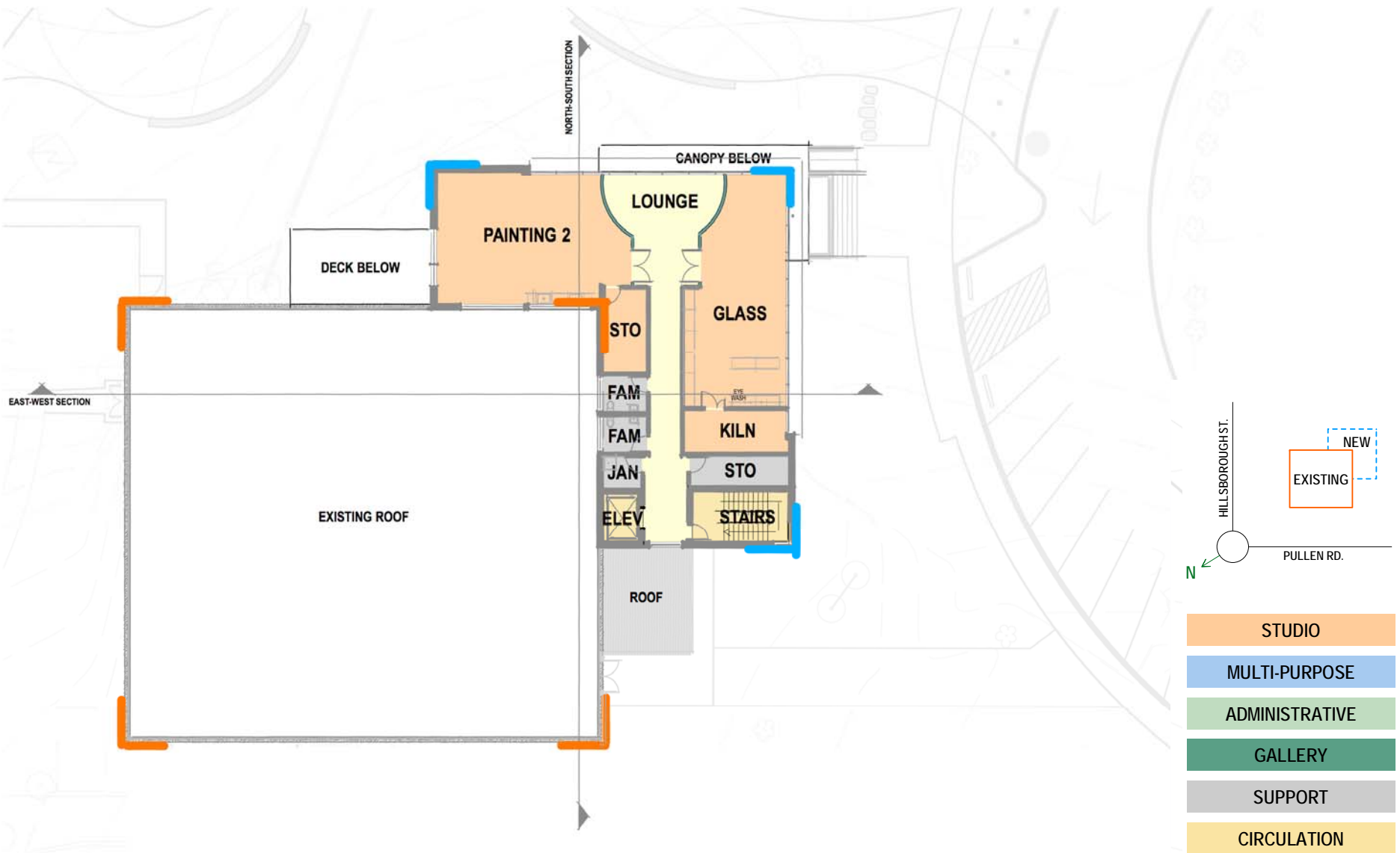


MAIN LEVEL PLAN



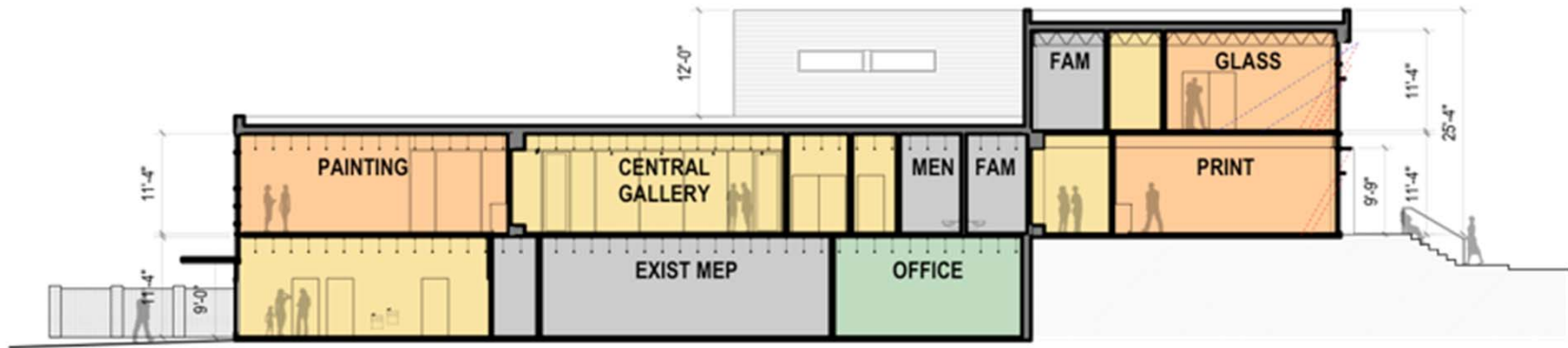
PULLEN ARTS CENTER IMPROVEMENTS PROJECT

UPPER LEVEL PLAN



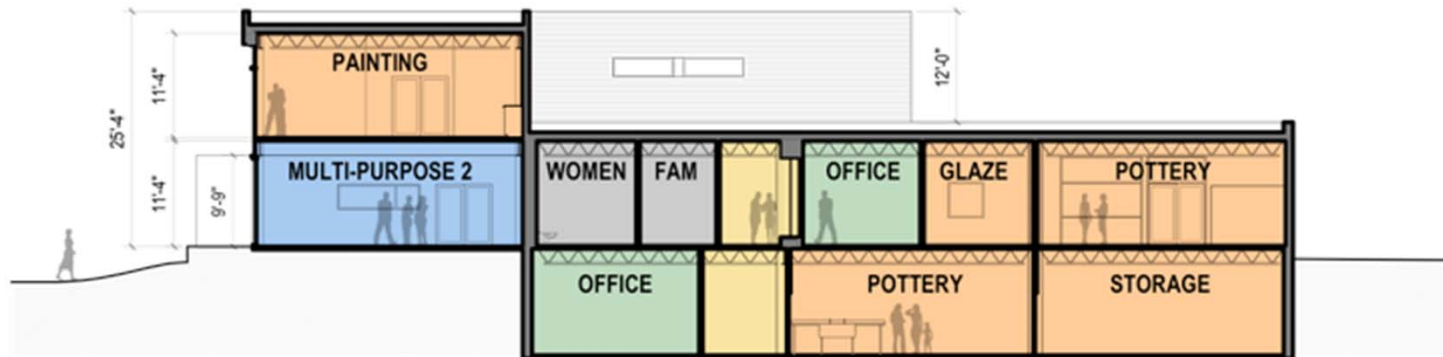
PULLEN ARTS CENTER IMPROVEMENTS PROJECT

BUILDING SECTIONS



EAST-WEST SECTION

Scale: 1/8" = 1'-0"



NORTH-SOUTH SECTION

Scale: 1/8" = 1'-0"

PULLEN ARTS CENTER IMPROVEMENTS PROJECT

EXISTING AND NEW AREA COMPARISON

LEGEND	CURRENT	PROPOSED	REMARKS
STUDIO	≈ 6,100 SF	≈ 8,900 SF	45% INCREASED AREA
MULTI-PURPOSE	≈ 2,000 SF	≈ 2,900 SF	45% INCREASED AREA
STAFF / ADMINISTRATION	≈ 1,600 SF	≈ 1,300 SF	HAS LARGER OFFICES
COMMUNAL/GALLERY/ CIRCULATION	≈ 1,800 SF	≈ 5,200 SF	190% INCREASED AREA

PULLEN ARTS CENTER IMPROVEMENTS PROJECT

3D SKETCH VIEW OF GALLERY SPACE



PULLEN ARTS CENTER IMPROVEMENTS PROJECT

3D SKETCH VIEW FROM MAIN ENTRY



PULLEN ARTS CENTER IMPROVEMENTS PROJECT

MAJOR BUILDING IMPROVEMENTS

ISSUE	EXISTING	PROPOSED	REMARKS
Building size	15,000 SF	22,500 SF	50% increase
Visibility from street	Not very visible		3 story addition will be more prominent and visible from street
Location of main entrance	Not clear		Main entrance clearly visible from parking area
Elevator between	None	1	Will provide accessibility floors
Lobby / communal space	Small		Multiple larger communal spaces with visual connection to outdoor
Art display	Limited area		Artwork can be displayed throughout the building
Delivery of clay materials	Difficult		Delivery on the south side right into clay storage room

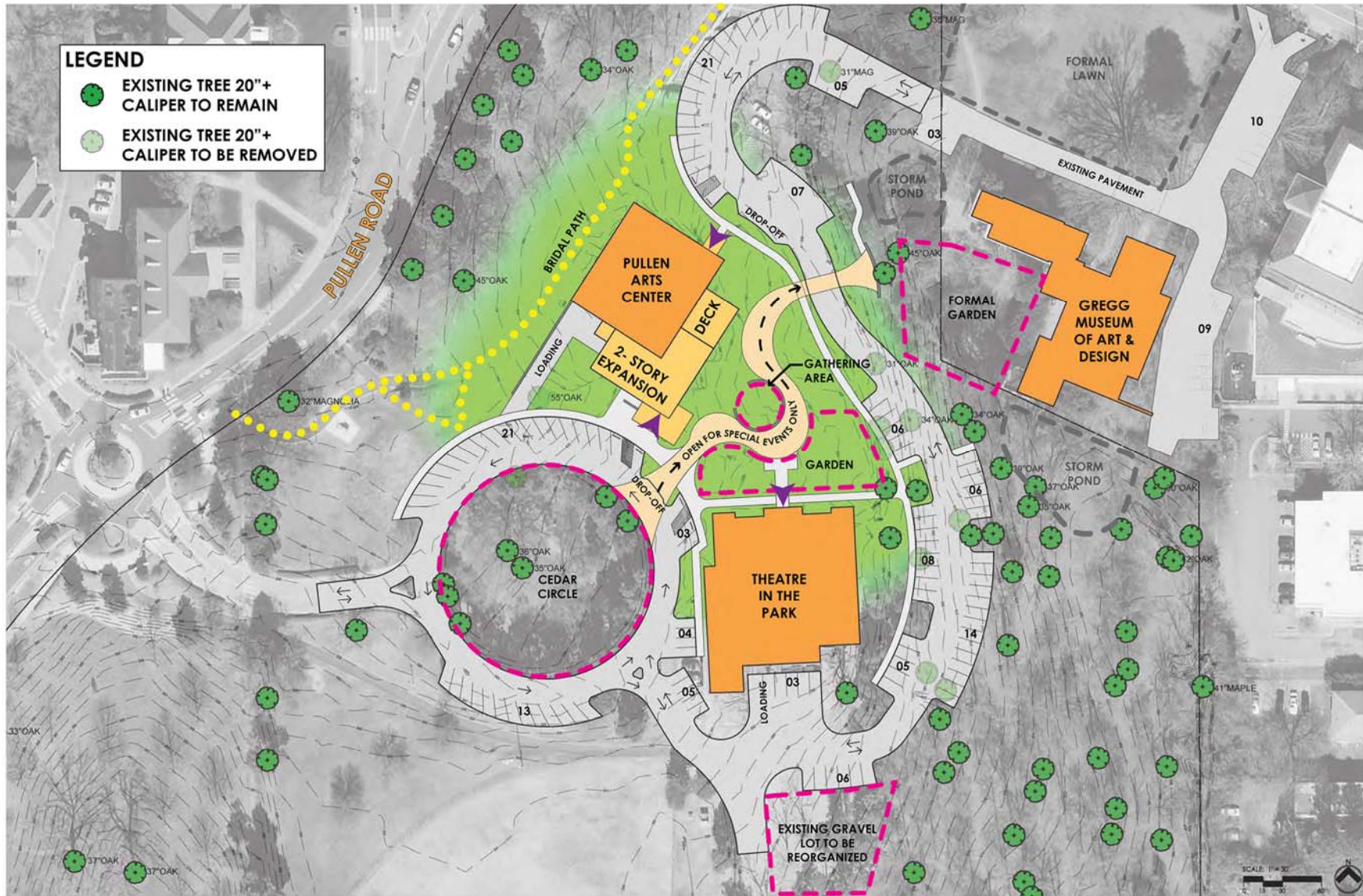
PULLEN ARTS CENTER IMPROVEMENTS PROJECT

EXISTING SITE CONDITION



PULLEN ARTS CENTER IMPROVEMENTS PROJECT

CONCEPTUAL STUDY PHASE SITE CONCEPT



PULLEN ARTS CENTER IMPROVEMENTS PROJECT

SCHEMATIC SITE DESIGN



PULLEN ARTS CENTER IMPROVEMENTS PROJECT

OUTDOOR GATHERING AREA



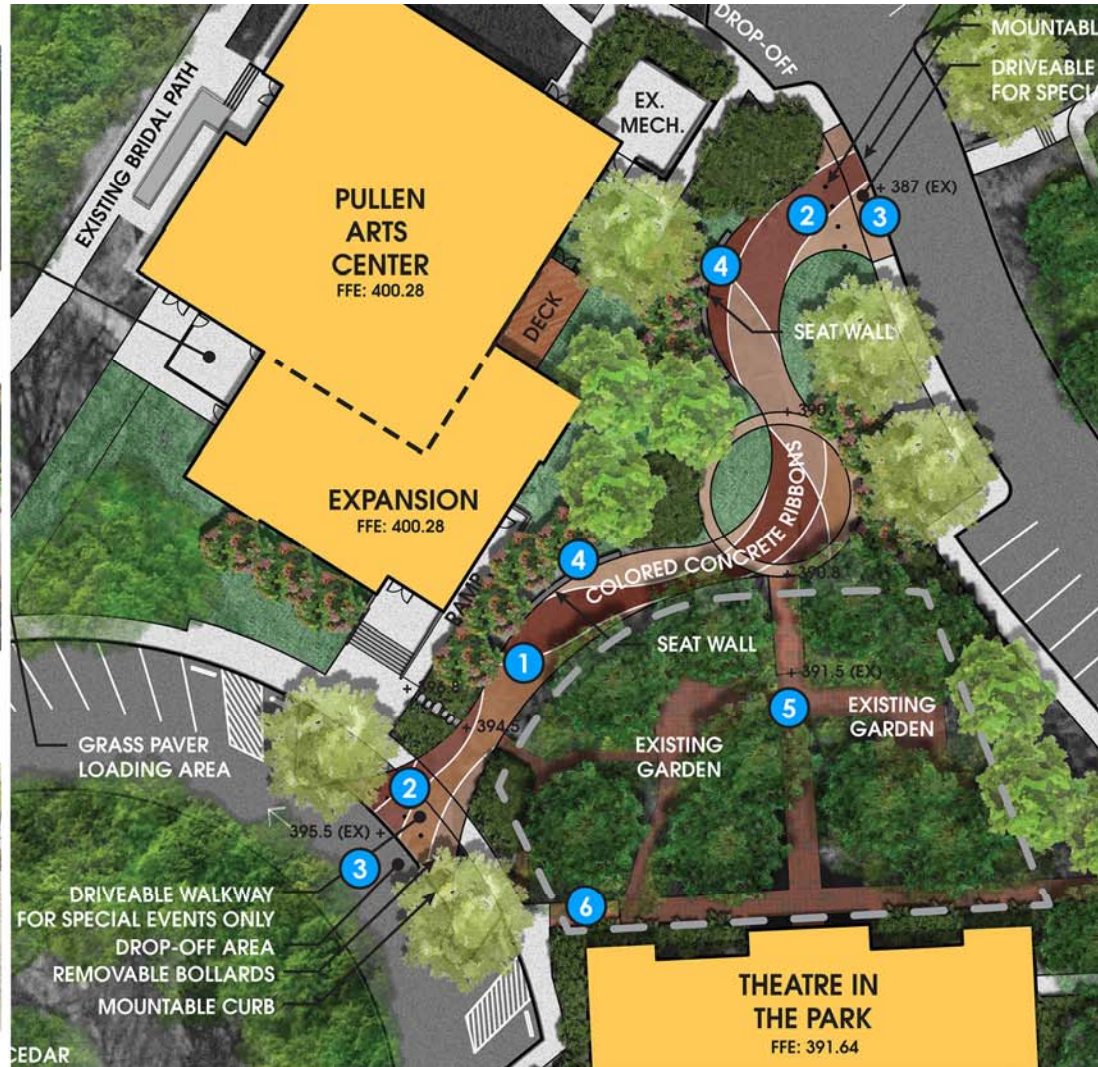
1
Colored Concrete



2
Removable Bollards



3
Curb & Paving Pattern



4
Seating Areas



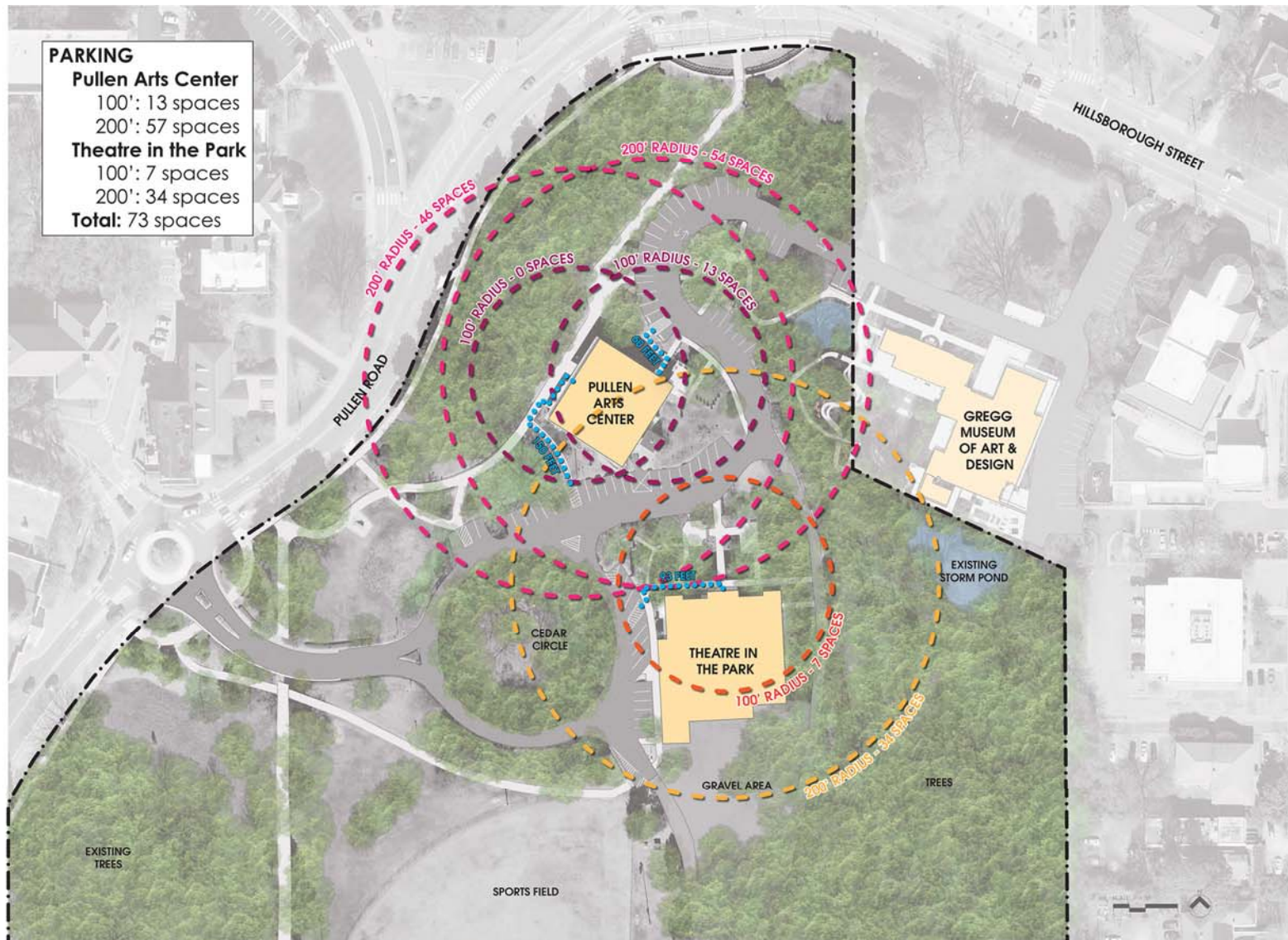
5
Existing Garden



6
Existing Garden

PULLEN ARTS CENTER IMPROVEMENTS PROJECT

EXISTING PARKING



PULLEN ARTS CENTER IMPROVEMENTS PROJECT

PROPOSED PARKING



PULLEN ARTS CENTER IMPROVEMENTS PROJECT

MAJOR SITE IMPROVEMENTS

ISSUE	EXISTING	PROPOSED	REMARKS
Parking spaces	73	100-105	Gain of 27-32 spaces
Parking spaces within 100' of main entrance	0	11	More parking close to entry
HC parking to main Entrance	150'	50'	Entrance now visible from parking area
Drop-off / loading	None	2	At north and south entrances
Outdoor art making Space	None	1	Designated area on the south side of building
Outdoor multi-function spaces	None		Outdoor balcony, pedestrian corridor with an enlarged focal space, improved integration with existing TIP gardens

PULLEN ARTS CENTER IMPROVEMENTS PROJECT

PROJECT TIMELINE

CONCEPTUAL STUDY PHASE

- June 2015 Begin Conceptual Study Phase
- March 2016 Last Public Meeting #3
- May 2016 Present to PRGAB
- June 2016 Present to Raleigh City Council

DESIGN & IMPLEMENTATION PHASE

- Fall 2016 End of Schematic Design Phase
- **January 2017** **Presentation to PRGAB**
- February 2017 Presentation to Raleigh City Council
- March 2017 End of Design Development Phase
- August 2017 End of Construction Documents and Permit Review Phase
- October 2017 Receive Bids
- Winter 2017 City Council Award Construction Contract
- February 2018 Projected Start of Construction Phase

