

Parks, Recreation, and Cultural
Resources

&

Engineering Services

BIG BRANCH GREENWAY CONNECTOR

Schematic Design

November 18, 2025

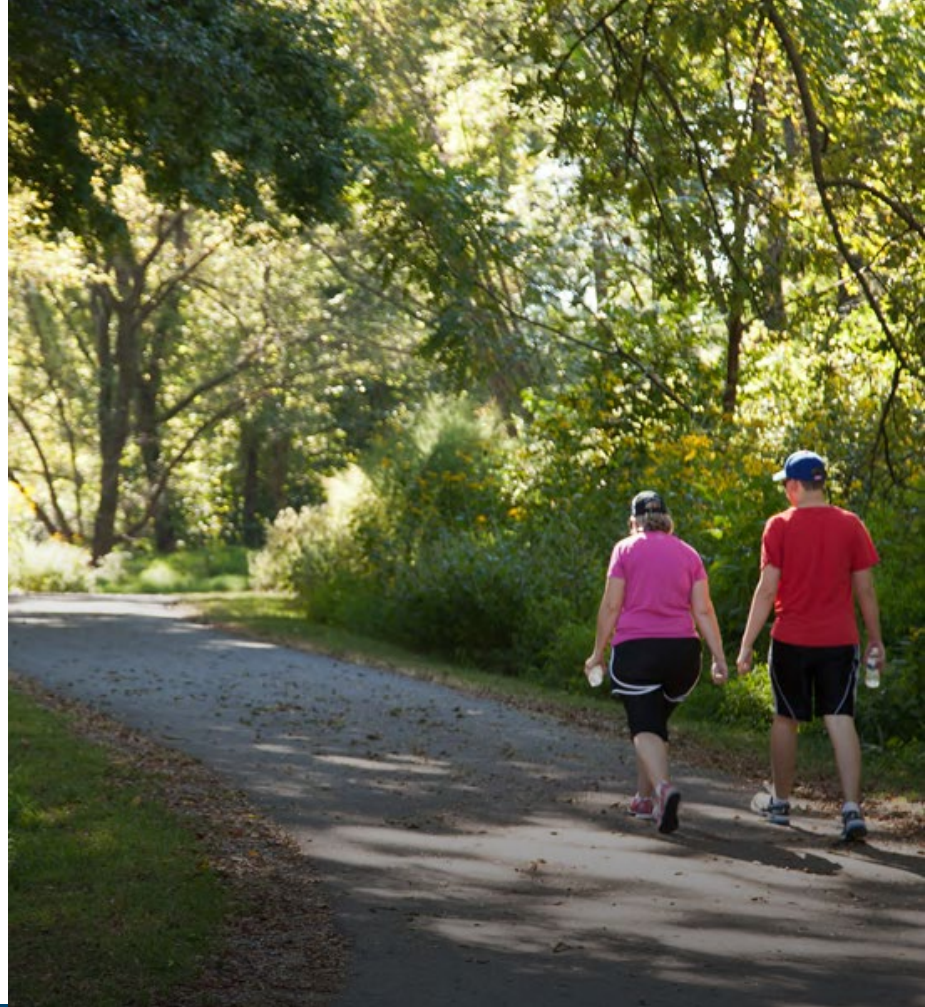


Raleigh



Agenda

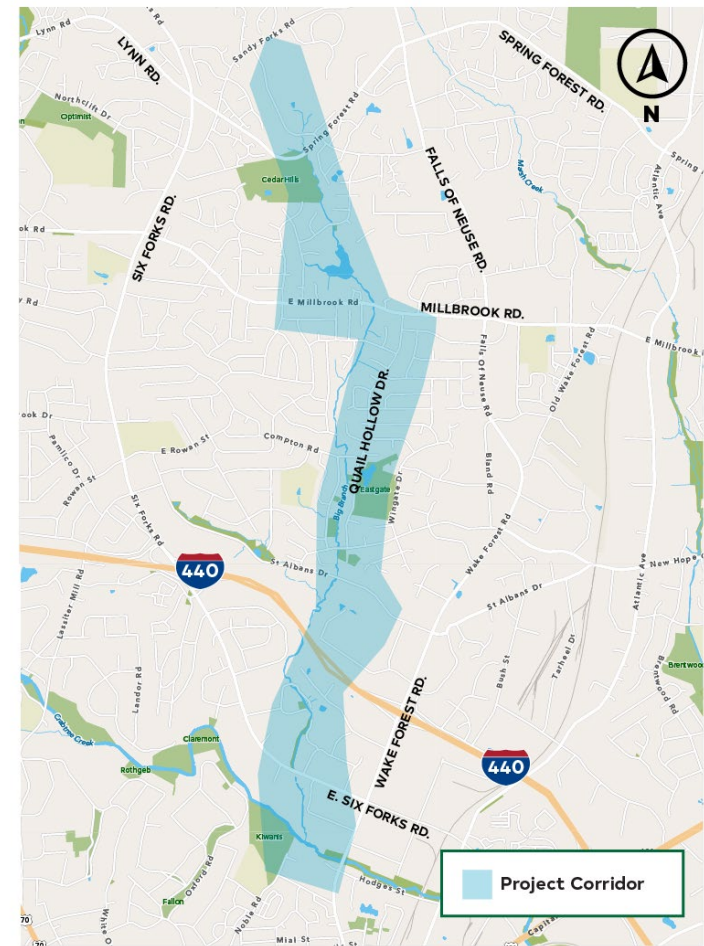
- Project Background
- Alignment Recommendations
- Alignment Evaluation: *Segment 1B*
- Moving Forward
- Discussion



Big Branch Trail Overview

3.5+ Mile Greenway Trail

- Funded by the 2022 Parks Bond
- Bond passed with 73% of the vote
- \$5.68M for design and construction
(\$4.48M Bond, \$1.2M Stormwater)
- Only *new* trail construction project in the Parks Bond

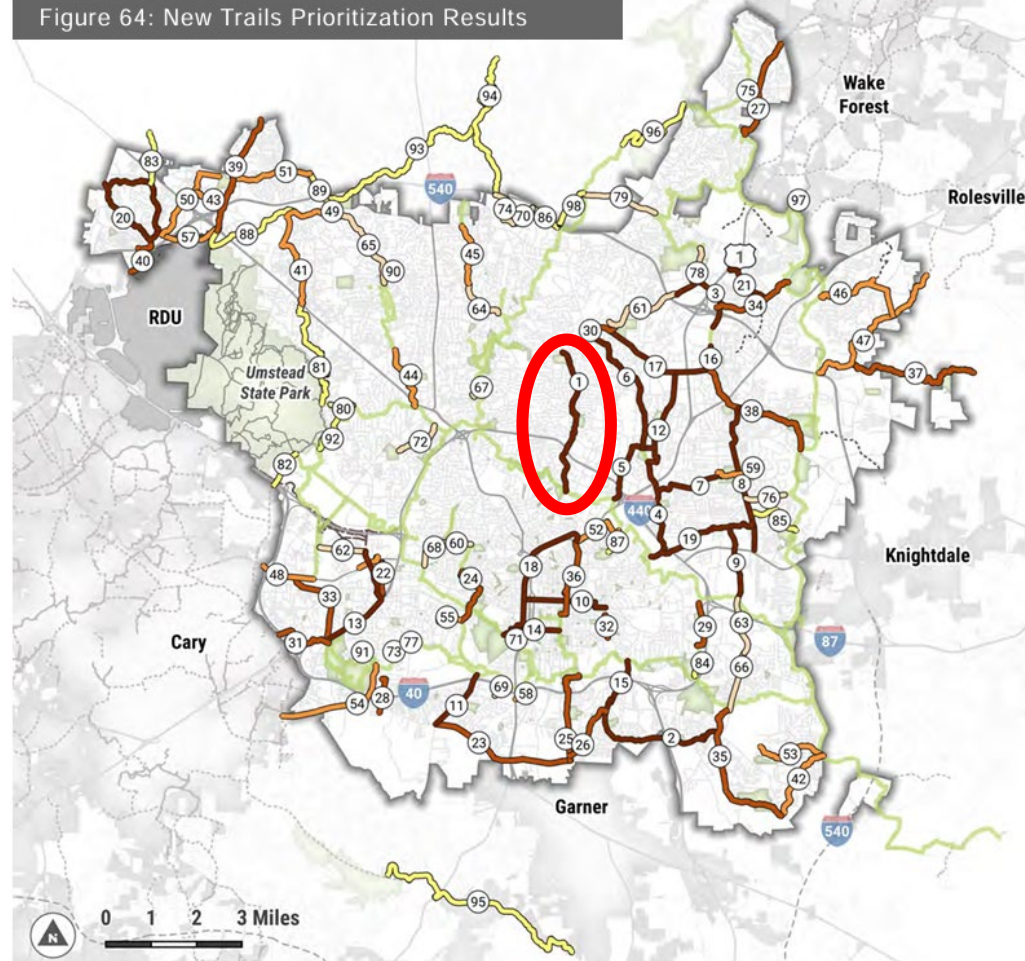


Long-Standing Focus

A priority for 50 years

- Featured in 1976, 1989 and 2022 Greenway Master Plans
- Included in the 2020 Midtown-St Albans Area Plan
- Ranked #1 among 98 projects in the 2022 Greenway Master Plan -- *based on density, access, proximity to transit, social impact, etc.*

Figure 64: New Trails Prioritization Results



Connecting Destinations & Neighborhoods

- **Parks and Greenway Connectivity:** Kiwanis Park, Eastgate Park, Cedar Hills Park, and Crabtree Creek Trail
- Links neighborhoods beyond I-440 to the Capital Area Greenway system
- **Over 7,000 residents currently live within a half-mile** of the proposed Big Branch Trail



Cedar Hills Park



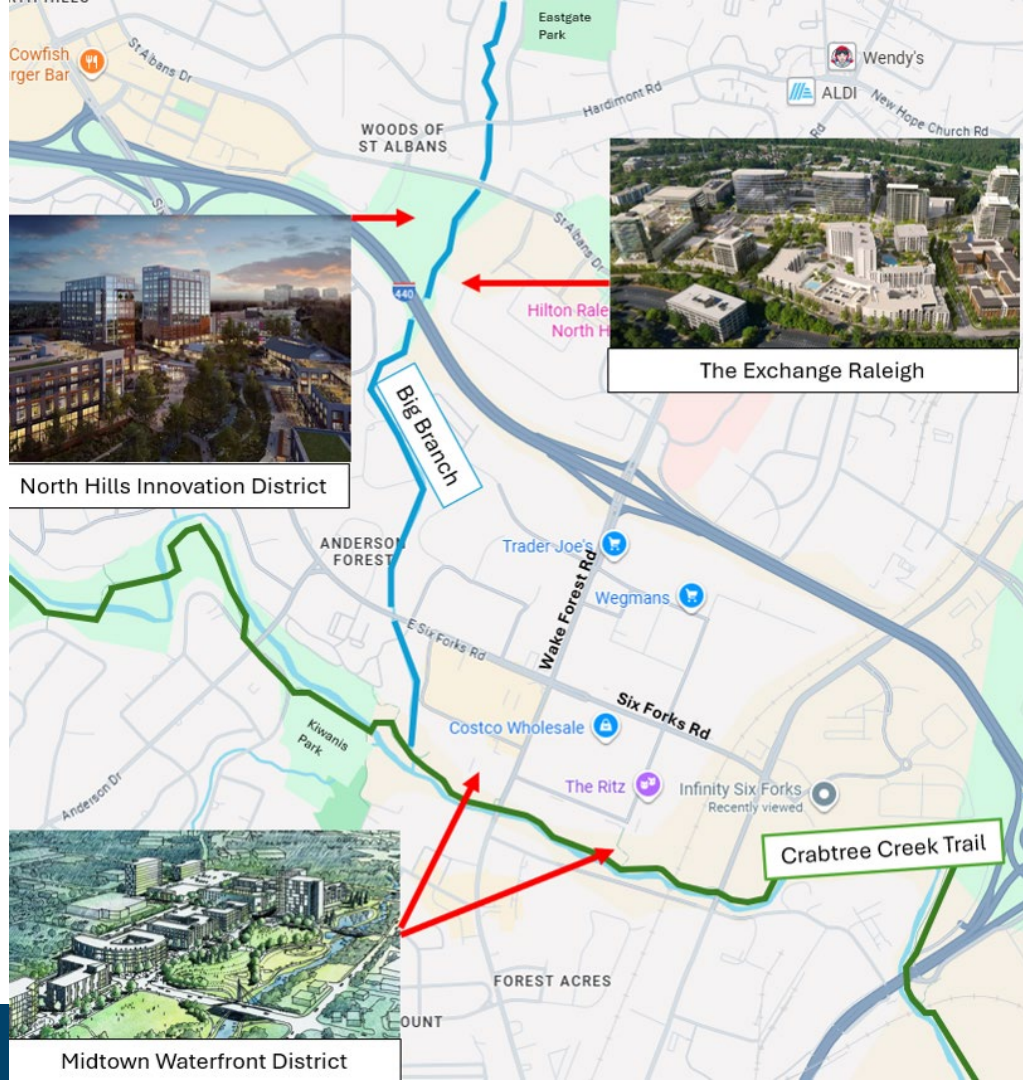
Eastgate Park



Kiwanis Park

Connecting Destinations & Neighborhoods

- **Greenway Oriented Development:** Connects fast-growing, mixed-use neighborhoods
- More than **3,000 new, multi-family units** are in the pipeline, as well as:
 - 1m+ sq ft of Office
 - 100k+ sq ft of Retail



Project Delivery

- **Segments 1A and 1B: Design and construction**
- **Segment 2: Midtown Multi-Modal Bridge – Raleigh Transportation project**
- **Segment 3: Public Private Partnership**
- **Segment 4: Design and construction**
- **Segment 5: Raleigh Transportation project**
- **Segment 6: Feasibility study**



Alignment Recommendations

Segment 1A

- Begins at Crabtree Creek Trail and follows east side of creek to Six Forks Road
- Follows along portion of parking area and Selby Drive
- Brings trail users to signalized intersection at Selby Drive and Six Forks Road



Segment 1B - Streamside Option / West

- Limited road and driveway conflicts. Good site lines.
- Environmental contribution with \$1.2M streambank restoration.
- Preferred by 62% of survey participants.
- 10' path with gentle grades – preferred for pedestrians, bikes, strollers, wheelchairs, etc.
- Provides a more natural experience.
- Limited utility impacts.
- Minimal tree removal and protects sewer easement.

****Presentation will return to discuss this option***



Segment 4

- St Albans Drive to Hardimont Road
- Runs along the east side of Big Branch
- Connects to the Quail Hollow Drive Green Street Project (Raleigh Transportation and Stormwater)



Alignment Evaluation: Segment 1B

Evaluation Criteria



Safety

**Accessibility
for all Users**

**Streambank
Protection and
Environmental
Investments**



**Connection to
Nature**



**Preservation:
Limit removal of
large trees**



**Proximity to
homes**

Constructability



Land Acquisition

Utility Relocation



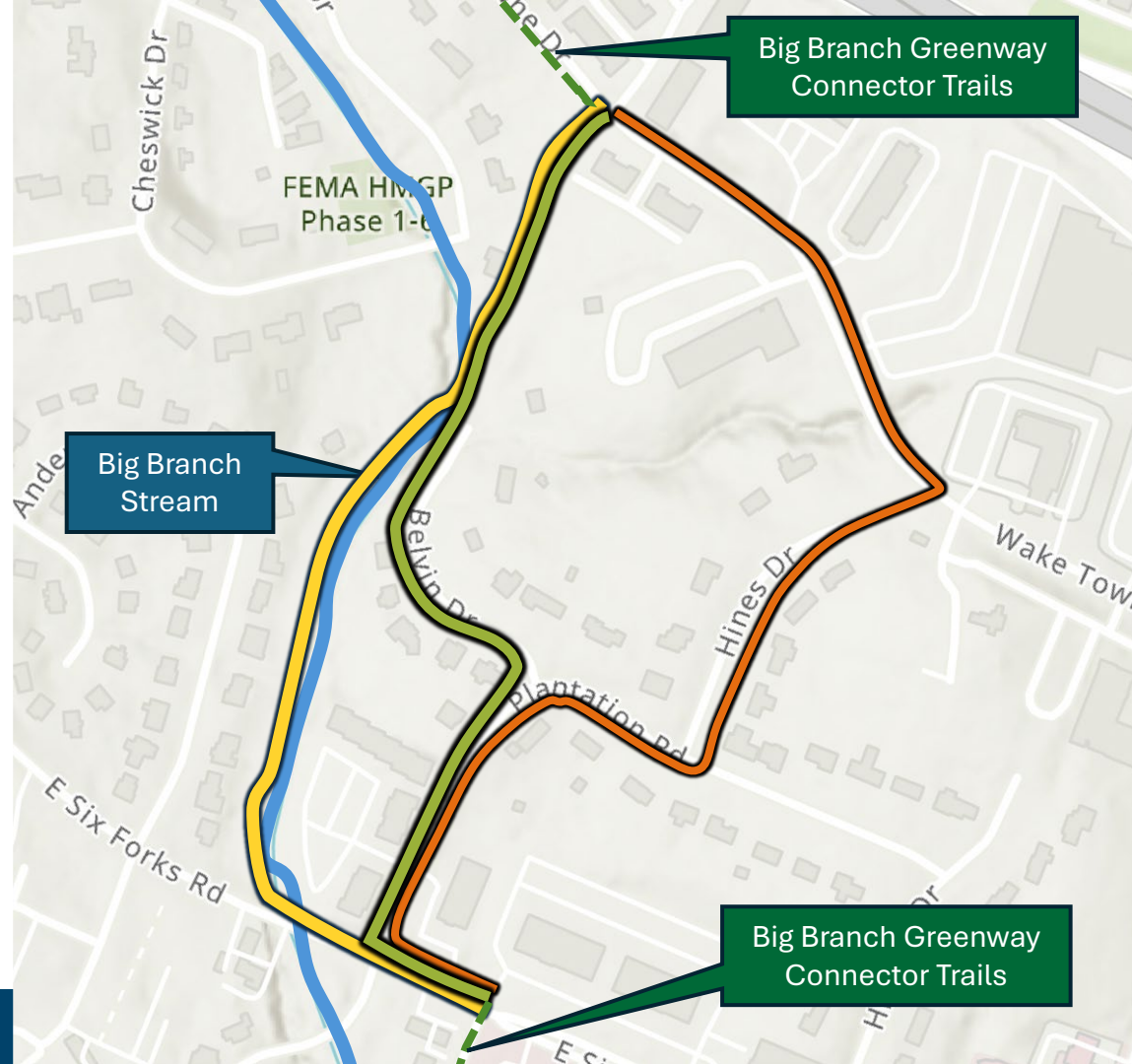
Public Support

Segment 1B

Phase 2 Outreach

SPRING 2025

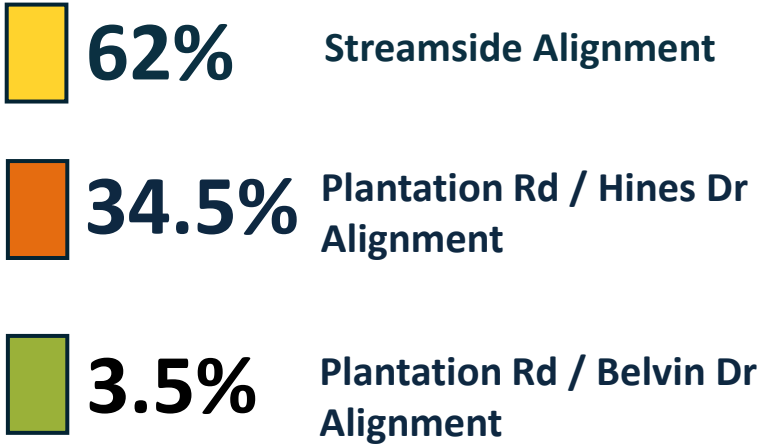
- 3 Alignment Options
- Detailed maps, visuals, comparison of options, and alignment descriptions
- Survey – 1,628 participants



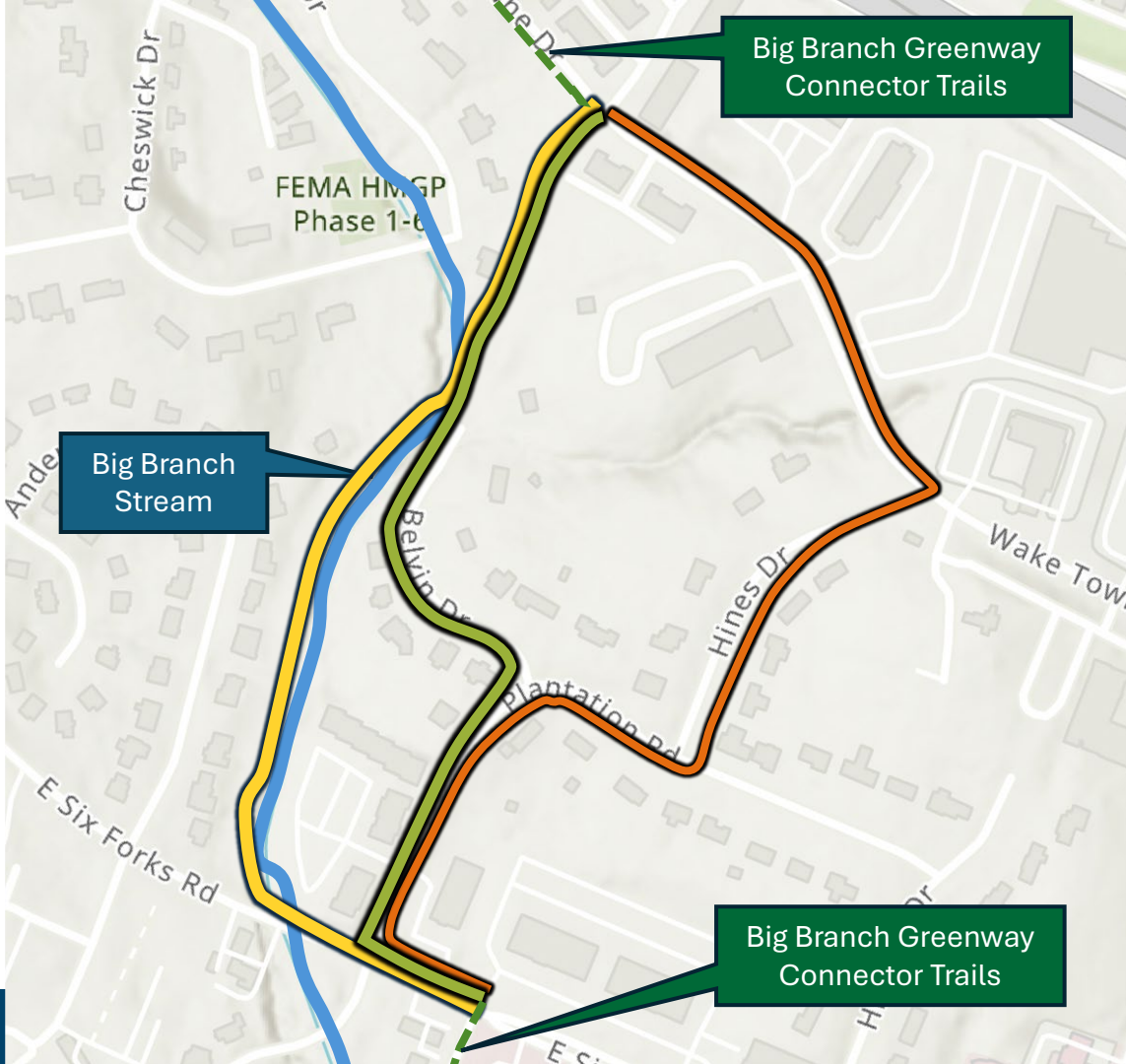
Segment 1B

Phase 2 Outreach

Survey Results



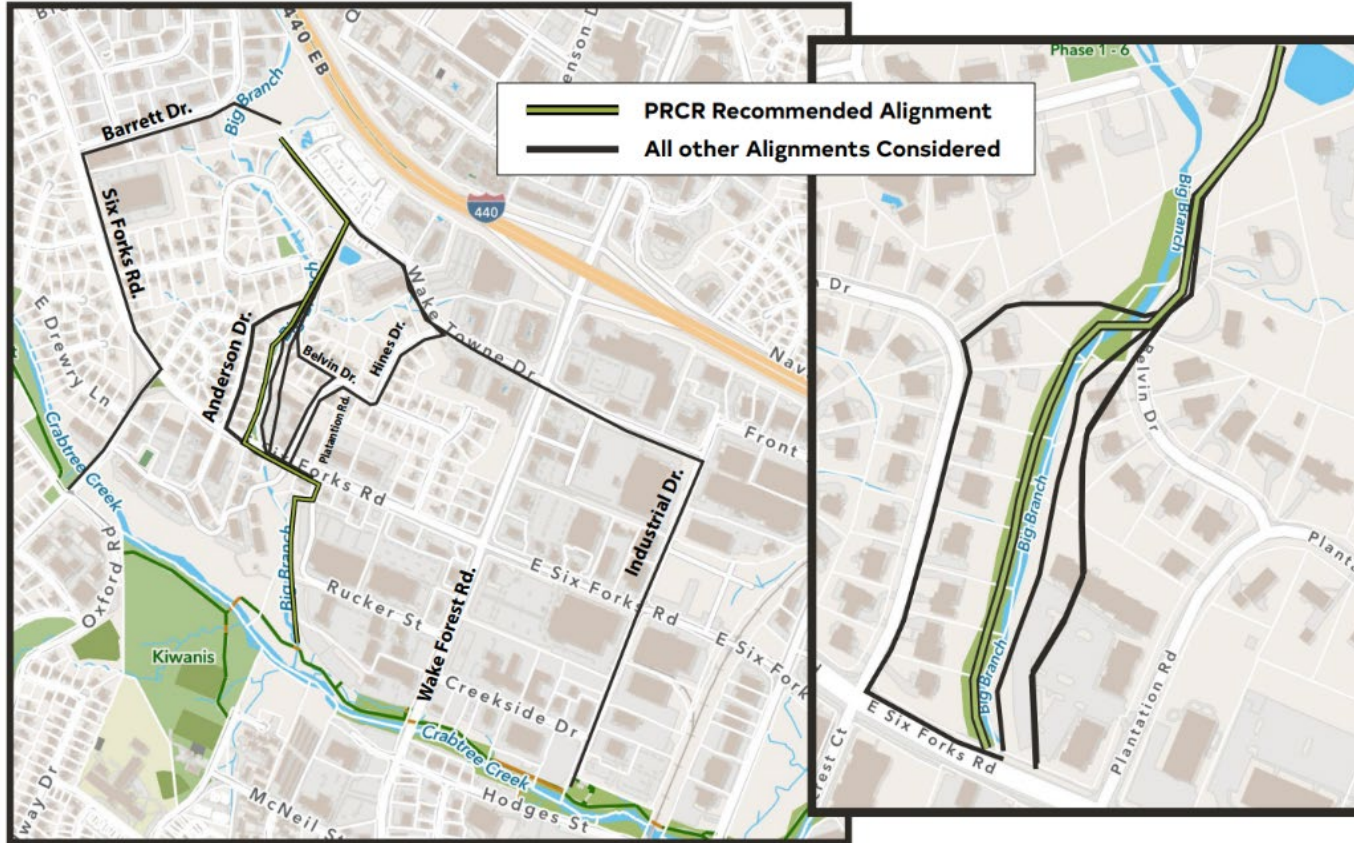
*Inside The 540 Beltline:
68% for Streamside Alignment*



Alignment Options Evaluated for Segment 1B

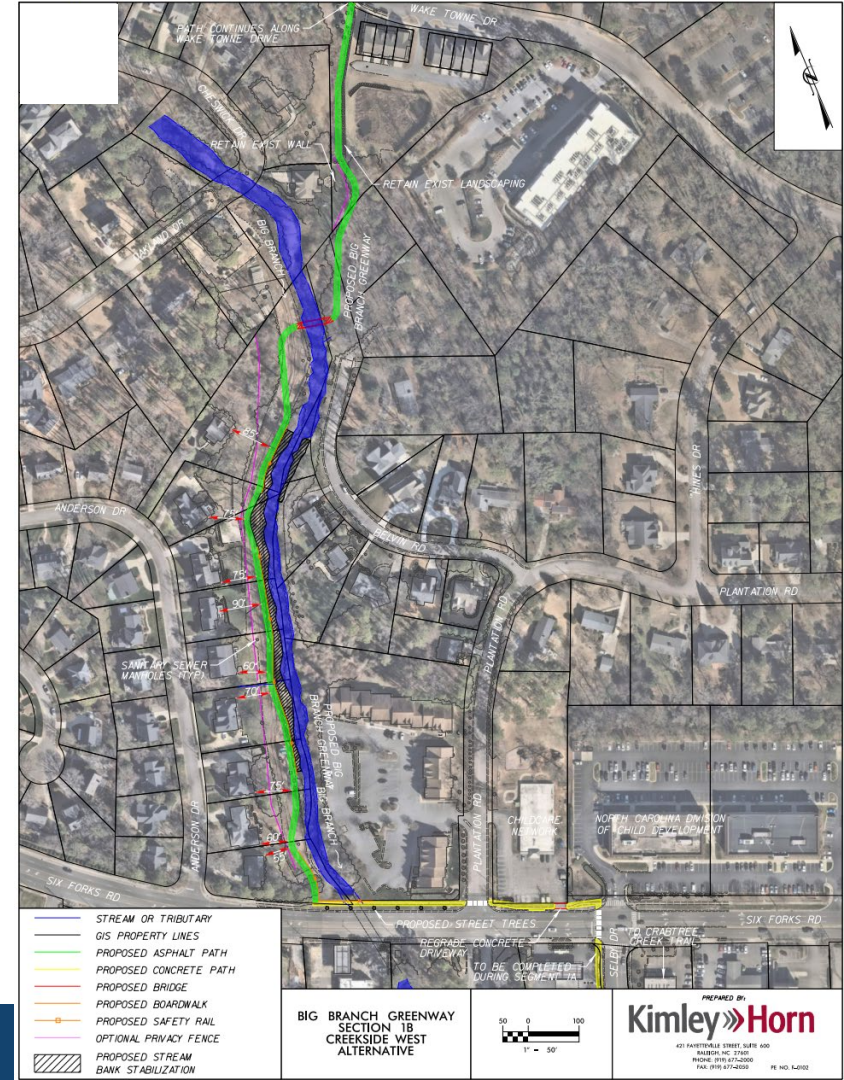
- 1. Plantation Road and Hines Drive**
- 2. Plantation Road and Belvin Drive**
- 3. Anderson Forest Sidewalks**
- 4. Industrial Drive and Wake Towne Drive**
- 5. Anderson Drive to Six Forks Road to Barrett Drive**
- 6. Streamside East**
- 7. Streamside West (recommended)**

All Options Evaluated



Environmental Restoration

- Stabilize streambank and reduce sediment and nutrient runoff
- Funded in partnership with Raleigh Stormwater (\$1.2M)
- Trail complies with Neuse River Buffer Rules



2023



Sewer Easement and Streambank (Before and After)

2024



Streambank Restoration

Layered Soil Plantings

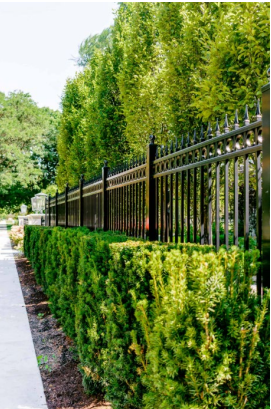


Boulder Foundation



Privacy and Safety

- Addressing privacy for adjacent homes
- **Solutions:** permeable fencing outside sewer easement; flood-resistant landscaping
- **Context:** There are **143** single-family homes less than 100 feet from a greenway trail in Raleigh



Permeable fencing with landscaping

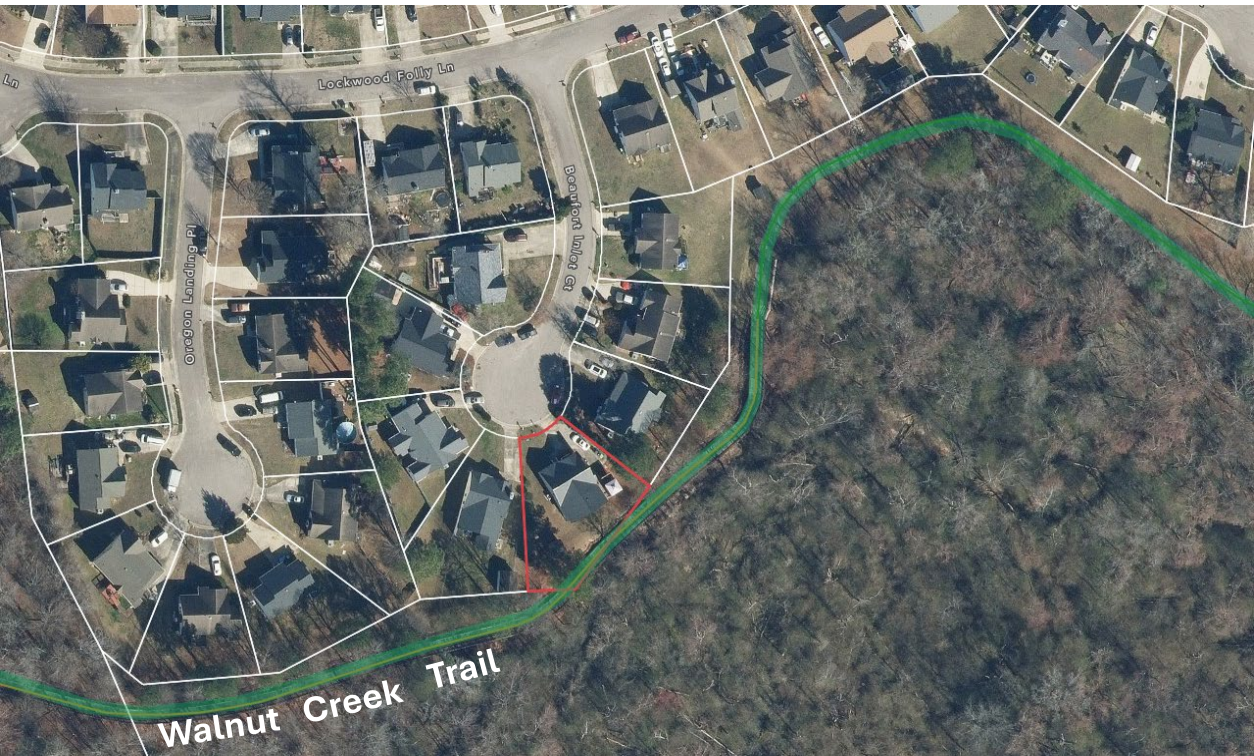


Wax Myrtle hedge
Up to 15' Tall



Existing home with permeable
fencing backing to Big Branch





Walnut Creek Trail, Lands End @ Eagle Chase Community

- 54' from a residence



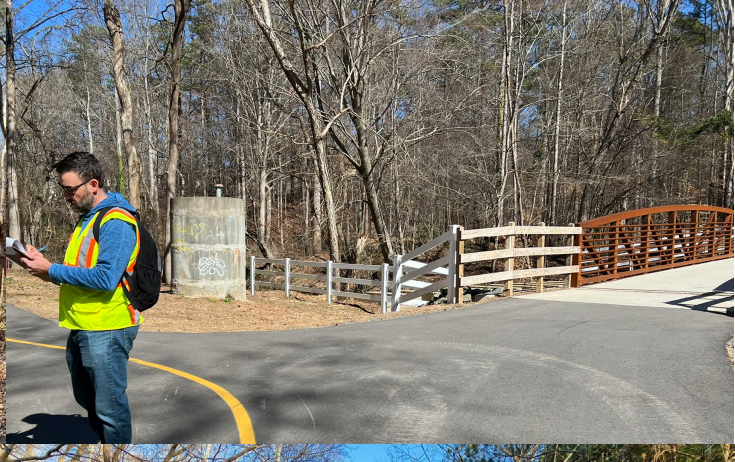
Neuse River Trail, Bedford at Falls Community

- 57' feet from a residence



Walnut Creek Trail, Walnut Ridge Community

- 41' feet from a residence



Sewer Manholes Adjacent to Trails



Existing Conditions



Potential Future Condition

Flood Risk Safety

- Although it is not directly associated with greenways, Raleigh maintains a city-wide, advanced Flood Early Warning System to alert staff and citizens of flooding dangers
- Raleigh Parks maintains a greenway alert text messaging system for closures
- The Greenway Maintenance Team has 33 staff members to manage trails – most of which are located in flood-prone areas



Easement Acquisition Process

- The existing, 1987 “Scenic Greenway Easement” in the Anderson Forest Subdivision does **not** allow trail construction
- City must acquire new easement(s) through:
 1. Easement appraisals
 2. Offer and Negotiation
 3. Condemnation if agreements cannot be reached

Estimated Construction Costs and Budget

Total Project Budget		\$5,680,000
	Project Budget from Bond	\$4,480,000
	Raleigh Stormwater Funding	\$1,200,000

Total Project Costs (<i>excluding real estate</i>)		\$6,100,000
--	--	-------------

Estimated Easement Acquisition Costs		
	Creekside West (staff recommended)	\$
	Creekside East	\$\$\$
	Plantation and Belvin/Hines	\$\$

Project Schedule

Project Stage and Review	Date
Greenway Committee	September 8, 2025
Parks, Recreation and Greenway Advisory Board	October 16, 2025
City Council Presentation	November 18, 2025
Complete Design, Permitting, and Bidding	Fall 2027
Complete Construction	Late 2028

Staff Recommendations

Parks Board Recommendation: *Approve alignments 1A and 4 for the Big Branch Creek Greenway, as presented by the Parks, Recreation and Greenway Advisory Board.*

Staff Recommendation: *Approve alignments 1A and 4 for the Big Branch Creek Greenway as presented by the Parks, Recreation and Greenway Advisory Board as well as the streamside west alignment for section 1B.*

Discussion