

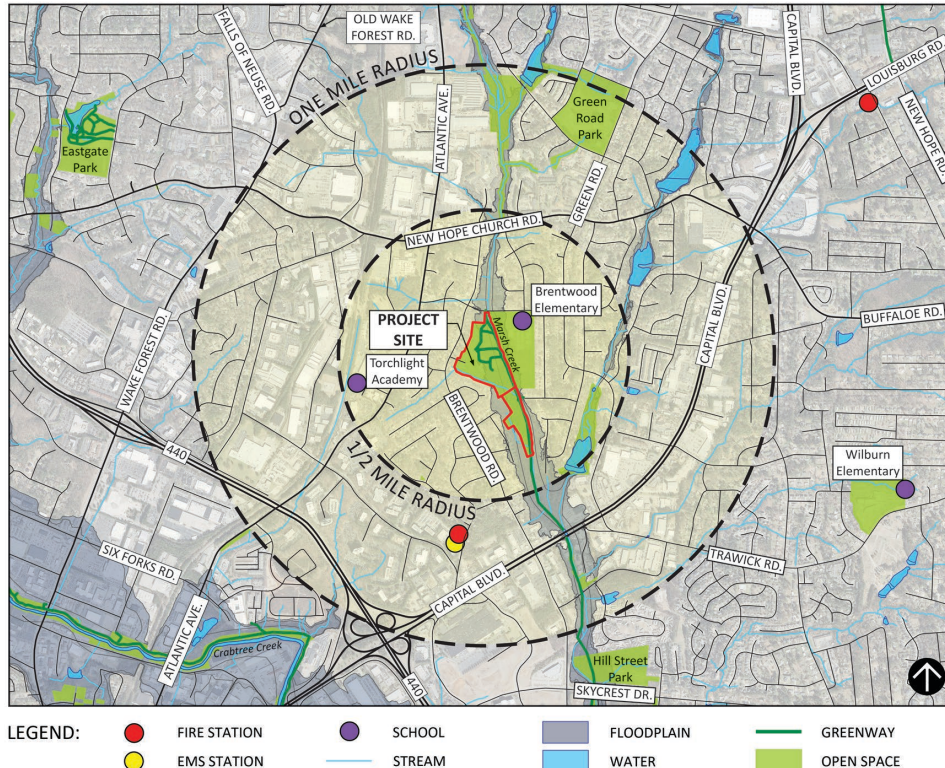
# Brentwood Park Phase I



Raleigh



# Site Location & Context



- 3315 Vinson Court, Raleigh, NC within the Brentwood Neighborhood in east Raleigh.
- Northeast of the intersection of Capital Blvd. & I-440
- 1.3 Miles south of Green Road Park
- City of Raleigh Greenway along Marsh Creek





Raleigh

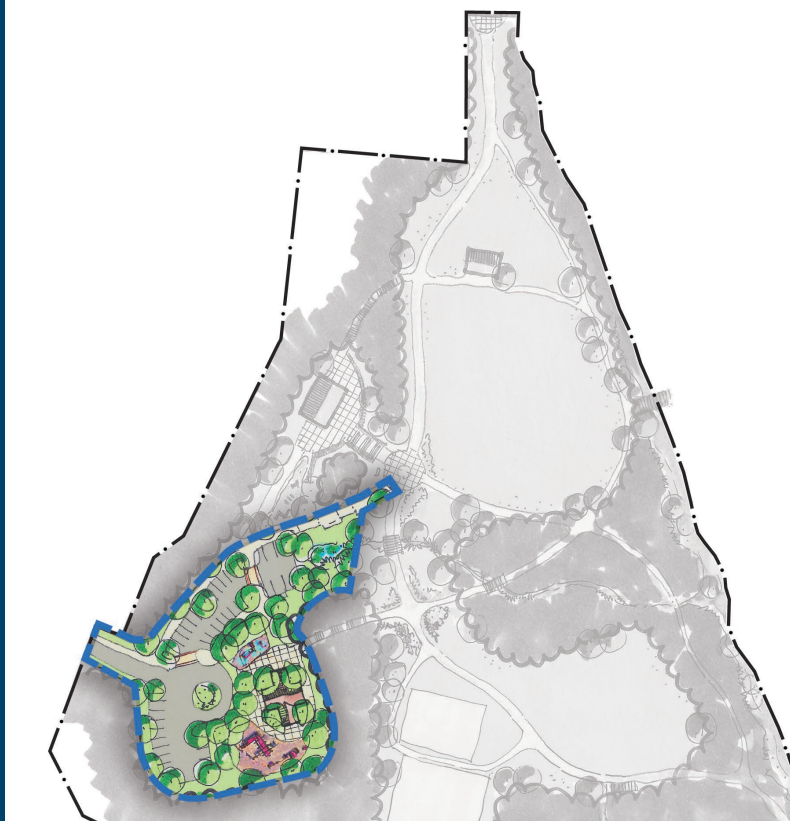
# Master Plan



## Major proposed features:

- New Neighborhood Center
- Renovated parking lot
- Walking loops
- Nature play
- Combination comfort station/ picnic shelter
- Large playground and mist feature
- Nature trails, boardwalks, overlooks and observation areas

# Master Plan: Phase One Priorities



- Community identified area to begin improvements
- Large playground with spray/mist feature
- Combination comfort station/picnic shelter
- Improved entrance with new sidewalk
- Renovated Parking
- Ramp/seating area

# Brentwood Park Phase I

**Susan  
Hatchell**

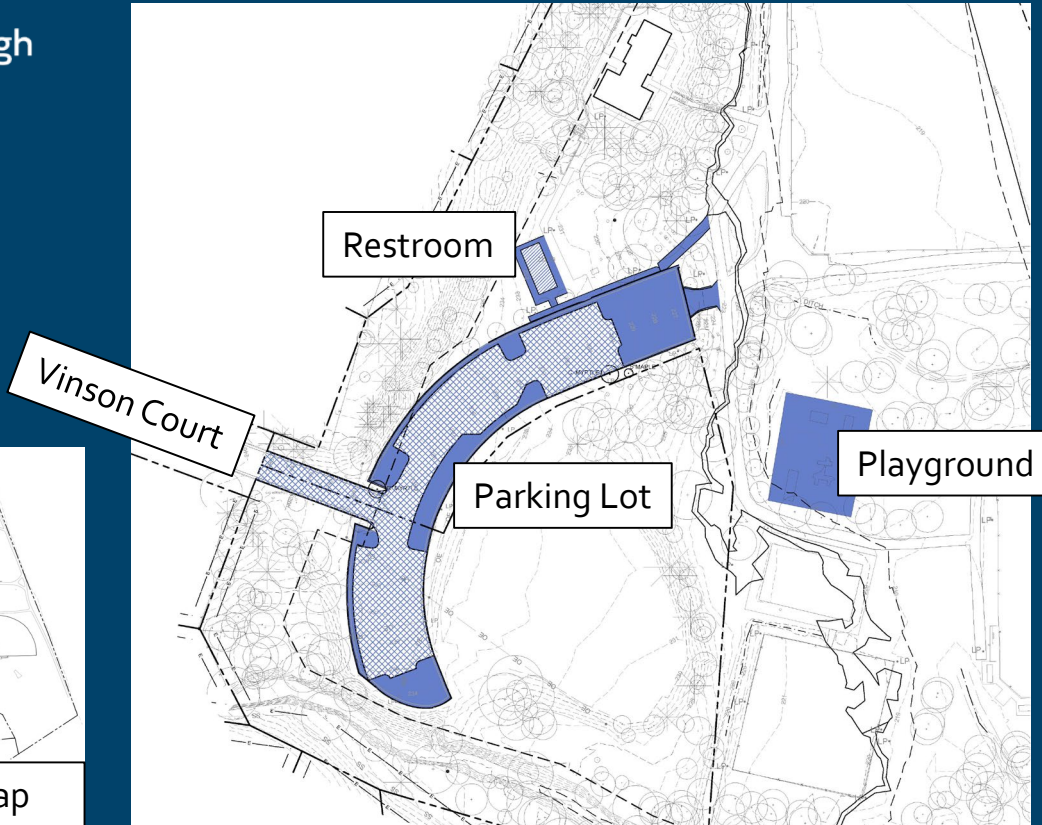
*Landscape Architecture, PLLC*



Raleigh

- Scope
  - Comfort station/shelter
  - New playground
  - Parking lot resurfacing
  - Improved pedestrian connection to Brentwood Road
- Size: 1.75 acres of ~19 acre park
- Budget: \$1.6 Million

# Site Demolition Plan



## Demolish:

- Restroom Building
- Concrete curb and portions of the existing parking lot
- Existing playground to remain open until new playground opens

## Parking:

- Existing: ~80 spaces
- Proposed: 35 spaces





# Site Plan

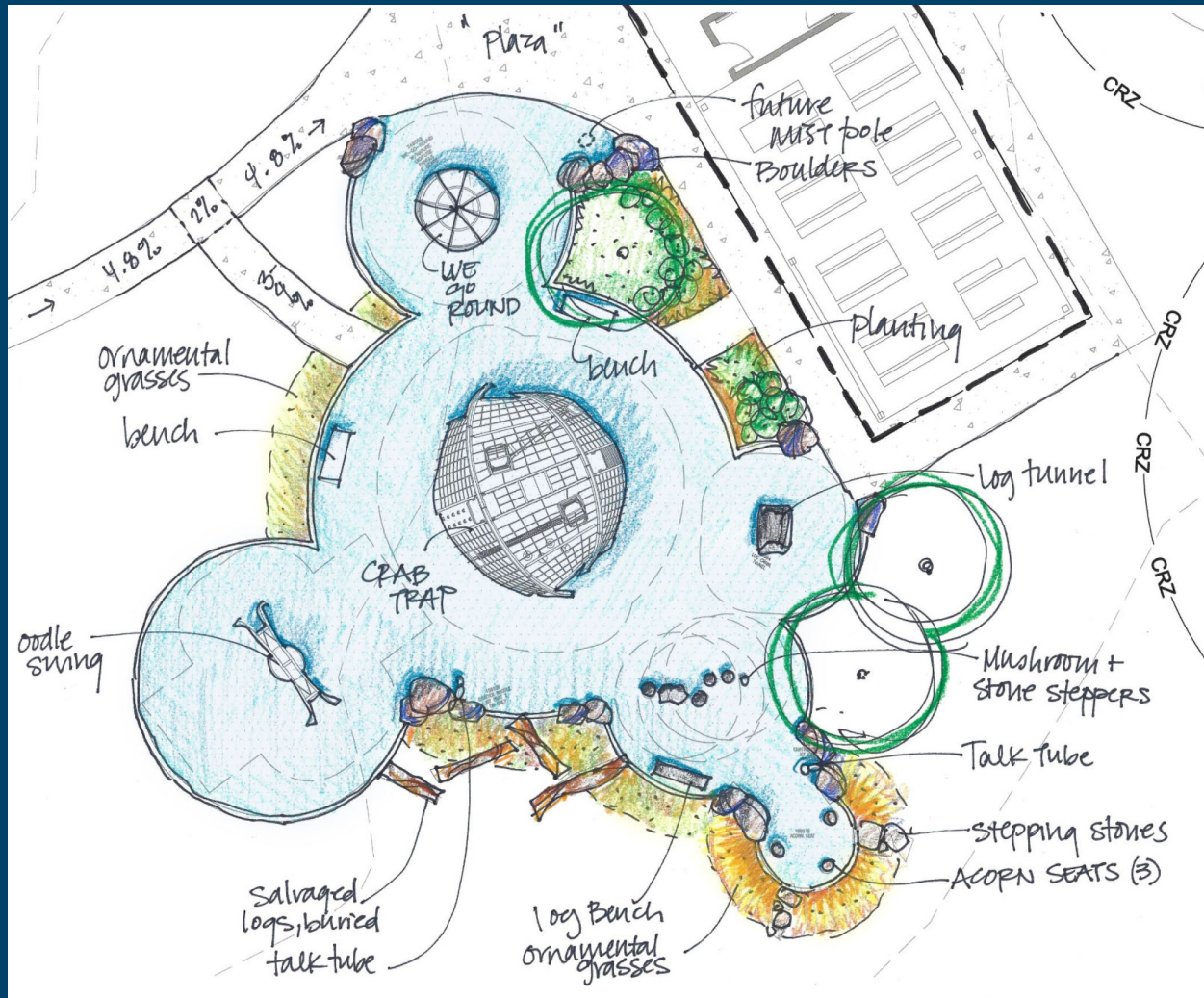


## Key Map



Raleigh

# Playground

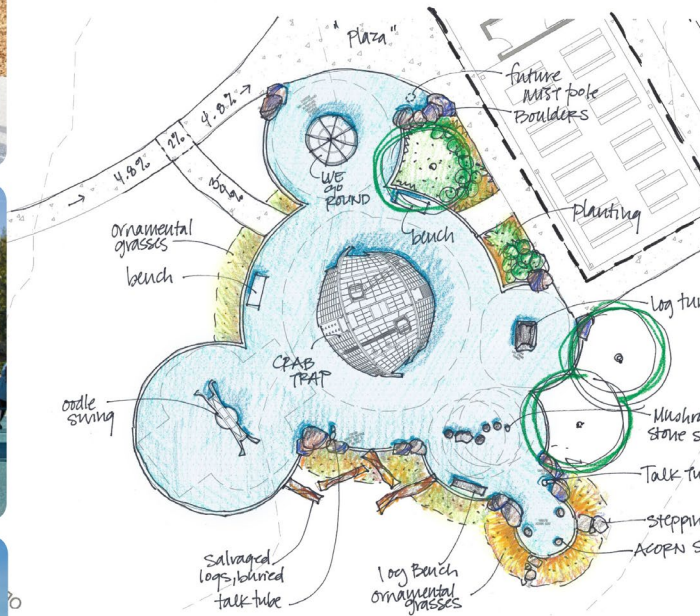




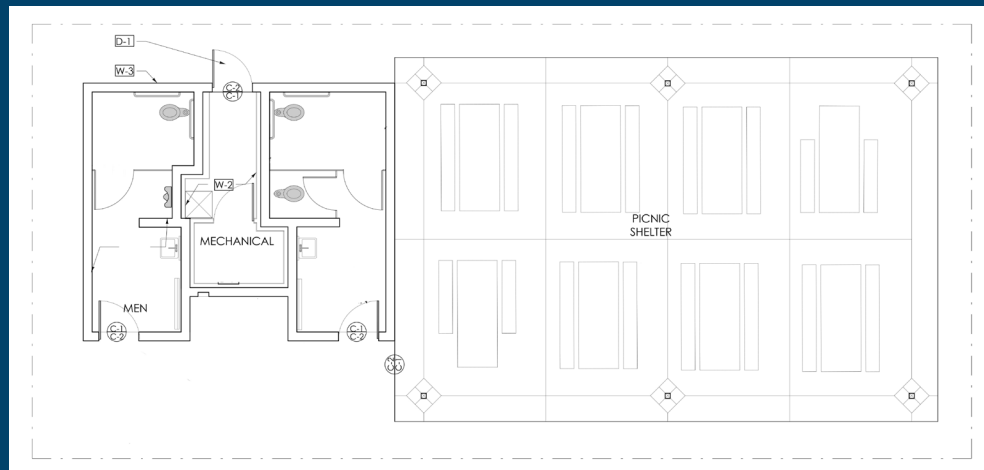


Raleigh

# Playground



# Comfort Station and Picnic Shelter



# Brentwood Park Phase I

- Schedule
  - January 2020 – Permitting
  - May 2020 – Bidding to Contractors
- Seven (7) Month Construction Period:  
Spring 2021 – Project Complete



Raleigh





# Brentwood Park Phase I

**Susan  
Hatchell**

*Landscape Architecture, PLLC*



**Raleigh**

