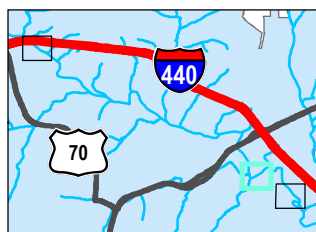


\\Us1564-01\workgroup\1726\active\17261001103_data_design\04_gis\mxd\JD_recovered.mxd Revised: 2019-04-22 By: mnuiz



Legend
Project Area
Streams

0 100 200 Feet
(At original document size of 8.5x11)
1:3,600

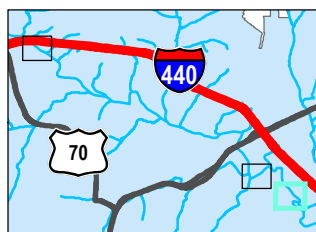
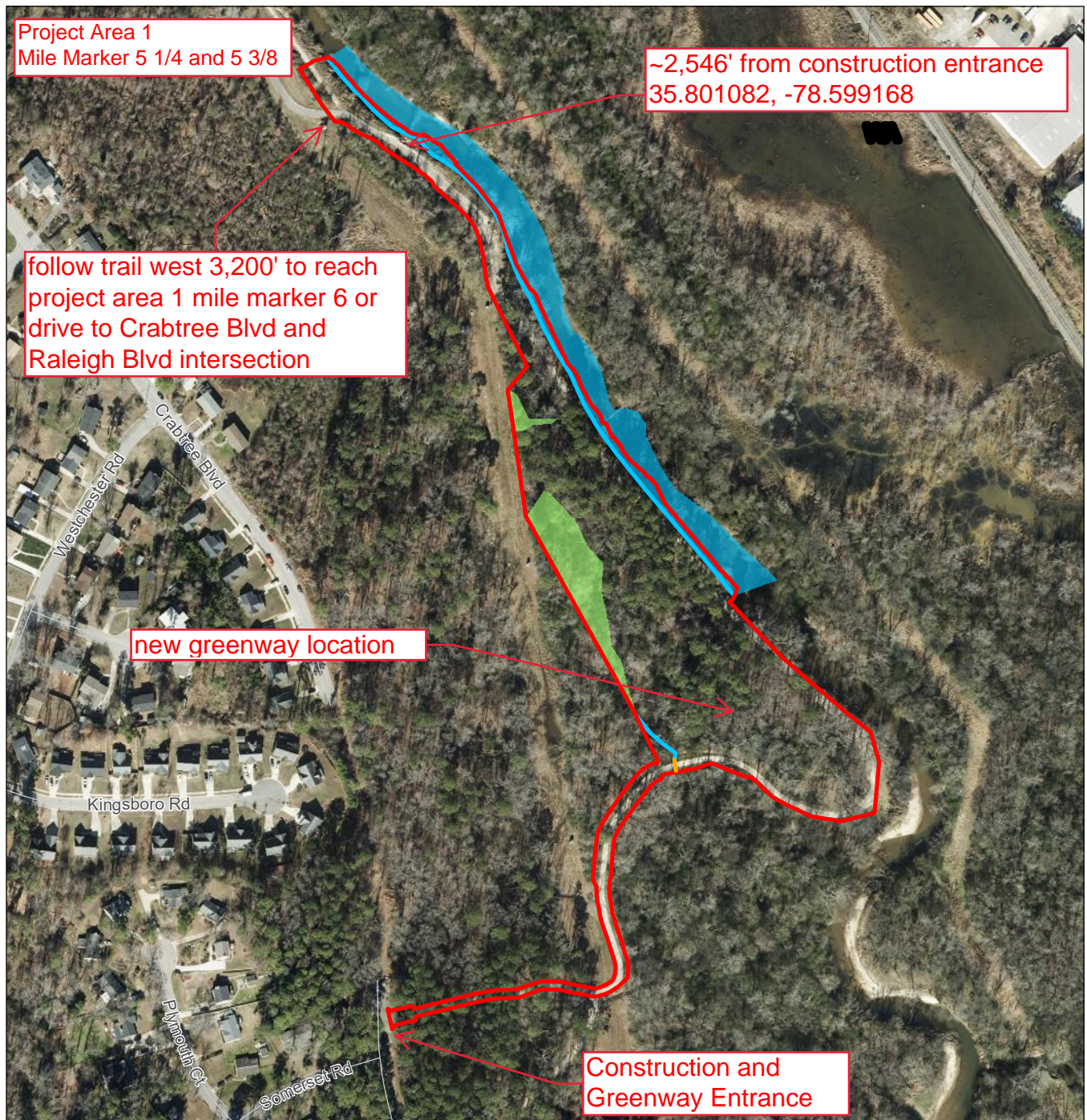


Project Location Raleigh Wake County, NC
Prepared by JPA on 2019-01-25
TR by ALC on 2019-04-22
IR Review by ARC on 2019-03-05
Client/Project City of Raleigh
Crabtree Creek Trail Realignment
172610011

Figure No. 3-2
Title
Jurisdictional Feature Map

Coordinate System: NAD 1983 StatePlane North Carolina FIPS 3200 Feet
Base Imagery: 2017 NCONEMAP Aerial Orthoimagery

V:\1726\active\17261001103_data_design\04_gis\mxd\JD_recovered_p3.mxd Revised: 2019-04-22 By: mulz



- Legend
- Project Area
 - Streams
 - Potential Jurisdictional Wetlands
 - Select Culverts
 - Upland Data Point
 - Wetland Data Point

0 100 200 Feet
(At original document size of 8.5x11)
1:3,600



Project Location
Raleigh
Wake County, NC
Client/Project
City of Raleigh
Crabtree Creek Trail Realignment
172610011

Figure No.
3-3
Title
Jurisdictional Feature Map

Coordinate System: NAD 1983 StatePlane North Carolina FIPS 3200 Feet
Base Imagery: 2017 NCONEMAP Aerial Orthoimagery



Latitude and Longitude for proposed work at Project Area 2

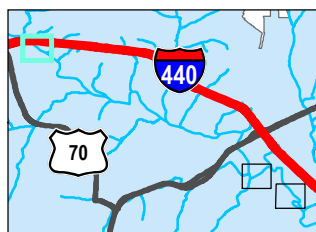
Streambank Repairs 274-PR-StreambankRepairs-031220

3/17/2020



075150
Feet

\\Us1564-01\workgroup\1726\active\17261001103_data_design\04_gis\mxd\JD_recovered.mxd Revised: 2019-04-22 By: mnuiz



Legend
Project Area
Streams

0 100 200 Feet
(At original document size of 8.5x11)
1:3,600



Project Location Raleigh Wake County, NC
Prepared by JPA on 2019-01-25
TR by ALC on 2019-04-22
IR Review by ARC on 2019-03-05
Client/Project City of Raleigh Crabtree Creek Trail Realignment
172610011

Figure No. 3-1
Title
Jurisdictional Feature Map

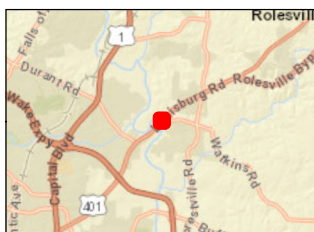
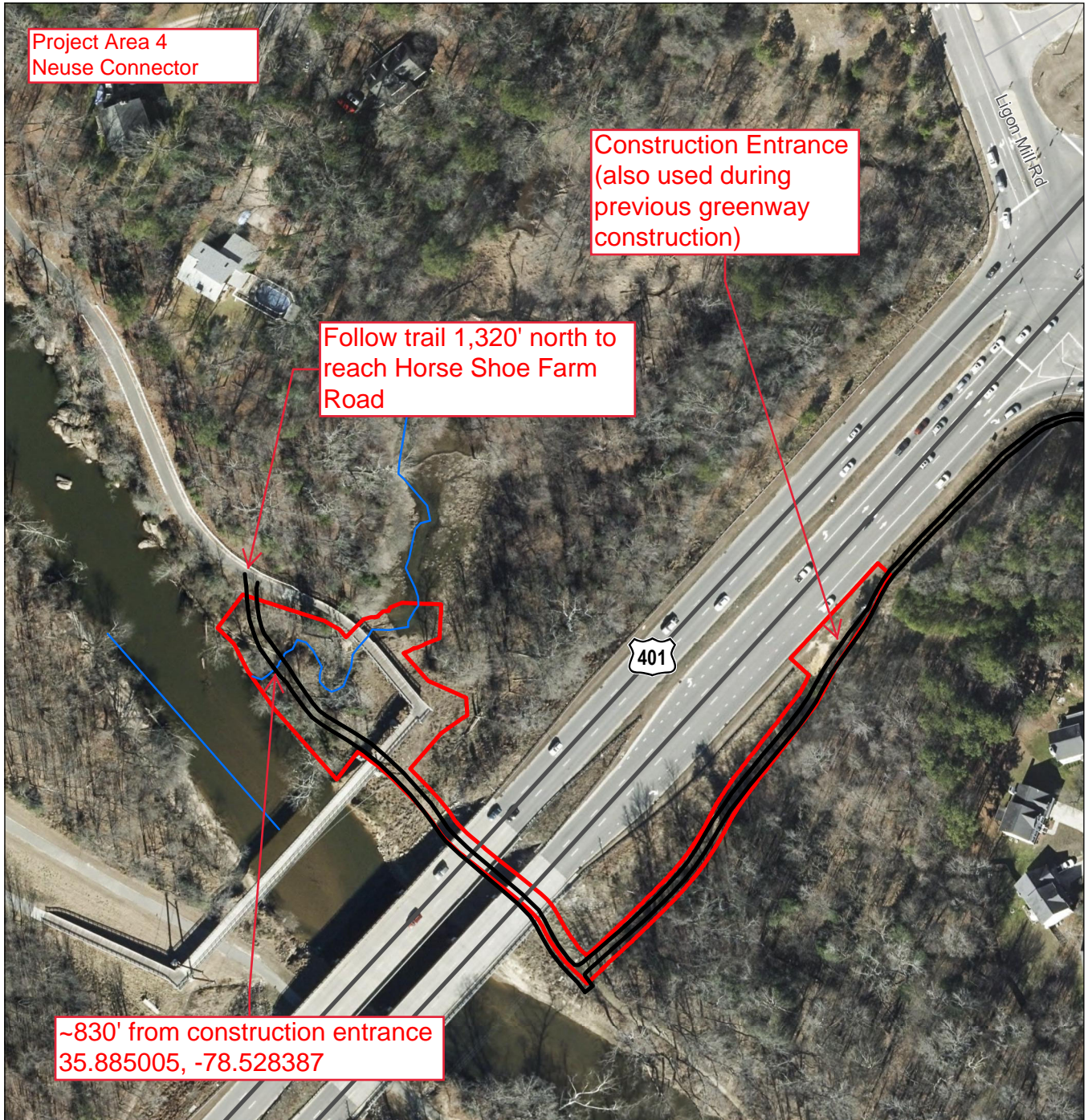
Coordinate System: NAD 1983 StatePlane North Carolina FIPS 3200 Feet
Base Imagery: 2017 NCONEMAP Aerial Orthoimagery

Project Area 4
Neuse Connector

Construction Entrance
(also used during
previous greenway
construction)

Follow trail 1,320' north to
reach Horse Shoe Farm
Road

~830' from construction entrance
35.885005, -78.528387



Legend

- Connector Trail and Bridge
- Unnamed tributary
- Limits of Disturbance

0 25 50
Feet

(At original document size of 8.5x11)
1:1,800



Project Location Raleigh Wake County, NC
Prepared by MMR on 2020-02-26
TR by ALC on 2020-02-26

Client/Project
City of Raleigh
Neuse Connector Stream Repairs

Figure No.

Title
Limits of Disturbance

Coordinate System: NAD 1983 StatePlane North Carolina FIPS 3200 Feet
Base Imagery: 2017 NCONEMAP Aerial Orthoimagery Layer

Disclaimer: This document has been prepared based on information provided by others as cited in the Notes section. Stantec has not verified the accuracy and/or completeness of this information and shall not be responsible for any errors or omissions which may be incorporated herein as a result. Stantec assumes no responsibility for data supplied in electronic format, and the recipient accepts full responsibility for verifying the accuracy and completeness of the data.