

Parks, Recreation and Cultural Resources
Department

Green Road Park Site Improvements Project Schematic Design

Parks, Recreation and Greenway
Advisory Board
May 16, 2024



Raleigh



PROJECT SUMMARY

PROJECT BUDGET

- 2022 Parks Bond
- \$4,500,000 for design and construction
- Additional \$250,000 for public art

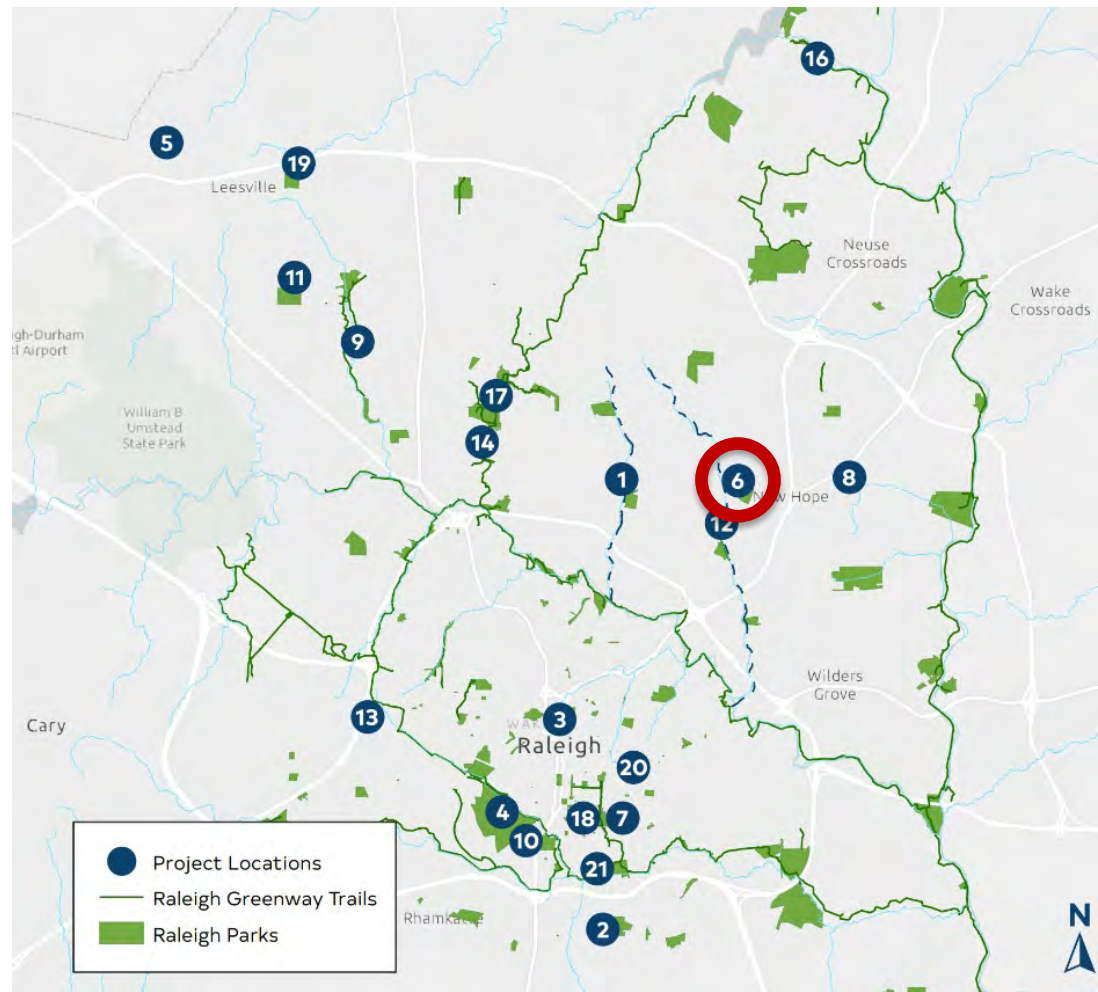
PROJECT TIMELINE

- Design and Permitting: Summer 2023-Spring 2025
- Oct. 2023: 1st Open House
- Feb. 2024: 2nd Open House
- April 2024: Public Meeting
- May 2024: PRGAB
- Bidding: Summer 2025
- Construction: Fall 2025-Fall 2026

PROJECT SUMMARY

PROJECT SCOPE (2022 Parks Bond)

- Enhancement of site accessibility
- Improvement of park amenities
 - Comfort Station
 - Picnic Shelter
 - Central Activity Plaza



Existing Conditions and Amenities



Existing Conditions

Park Site



Restroom



Playground and Volleyball

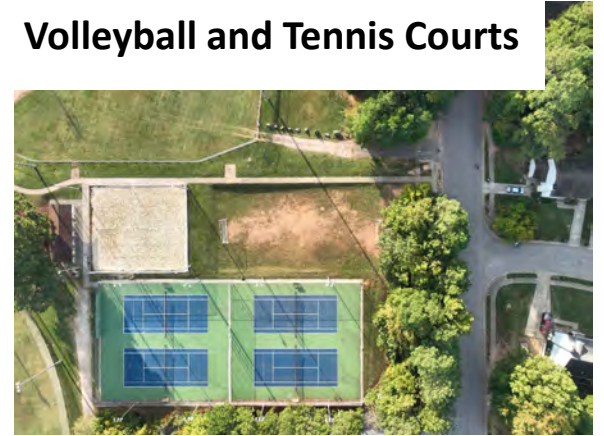


Small Baseball Field



Large Baseball Field

Volleyball and Tennis Courts



Concept Plan



2024.02.03



Public Open Houses Summary

- Better restroom building
- More seating near baseball fields
- Multi-function gathering space
- Improved park-wide connections
- Open space for events
- Improve baseball field
 - Seating
 - Drainage
- Larger playground
- Ability to enjoy nature/outdoors
- Many park users arrive to Green Road Park by vehicle





Schematic Design Plan

Schematic Design Summary

- **Enhancement of site accessibility and pedestrian safety improvements**
 - Raised crosswalk in parking area
 - New accessible pathways connecting park features



Schematic Design Summary

Improvement of park amenities and recreational features

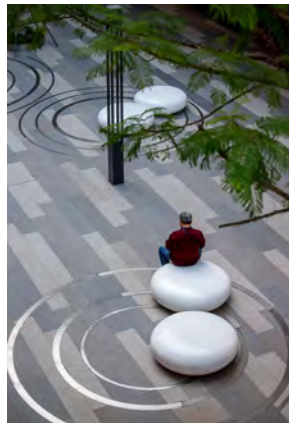
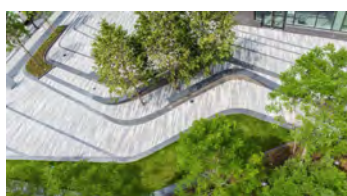
- Park entry plaza
- Upgraded playground and adult fitness areas
- New restroom building and shade structure
- New futsal and pickleball courts
- Open space for passive recreation and gathering
- Collaboration with public artist



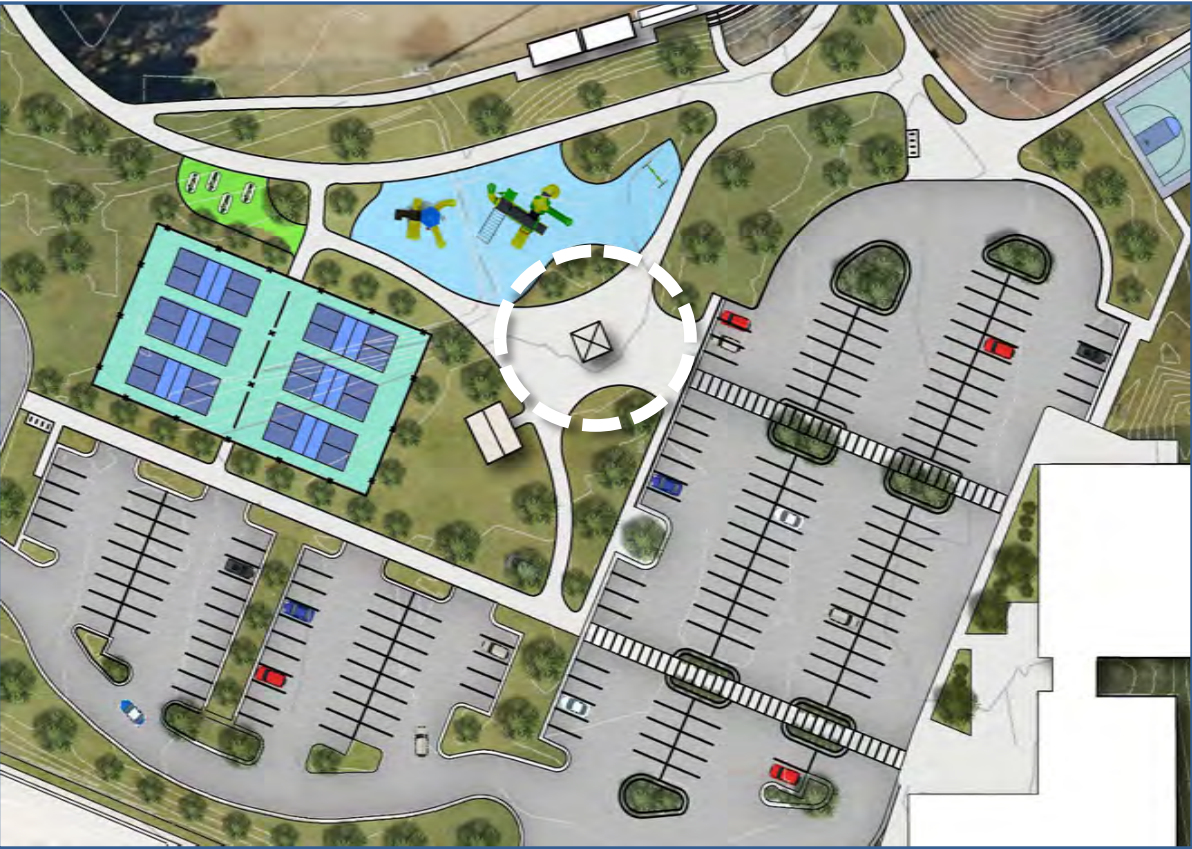
Playground



Central Plaza



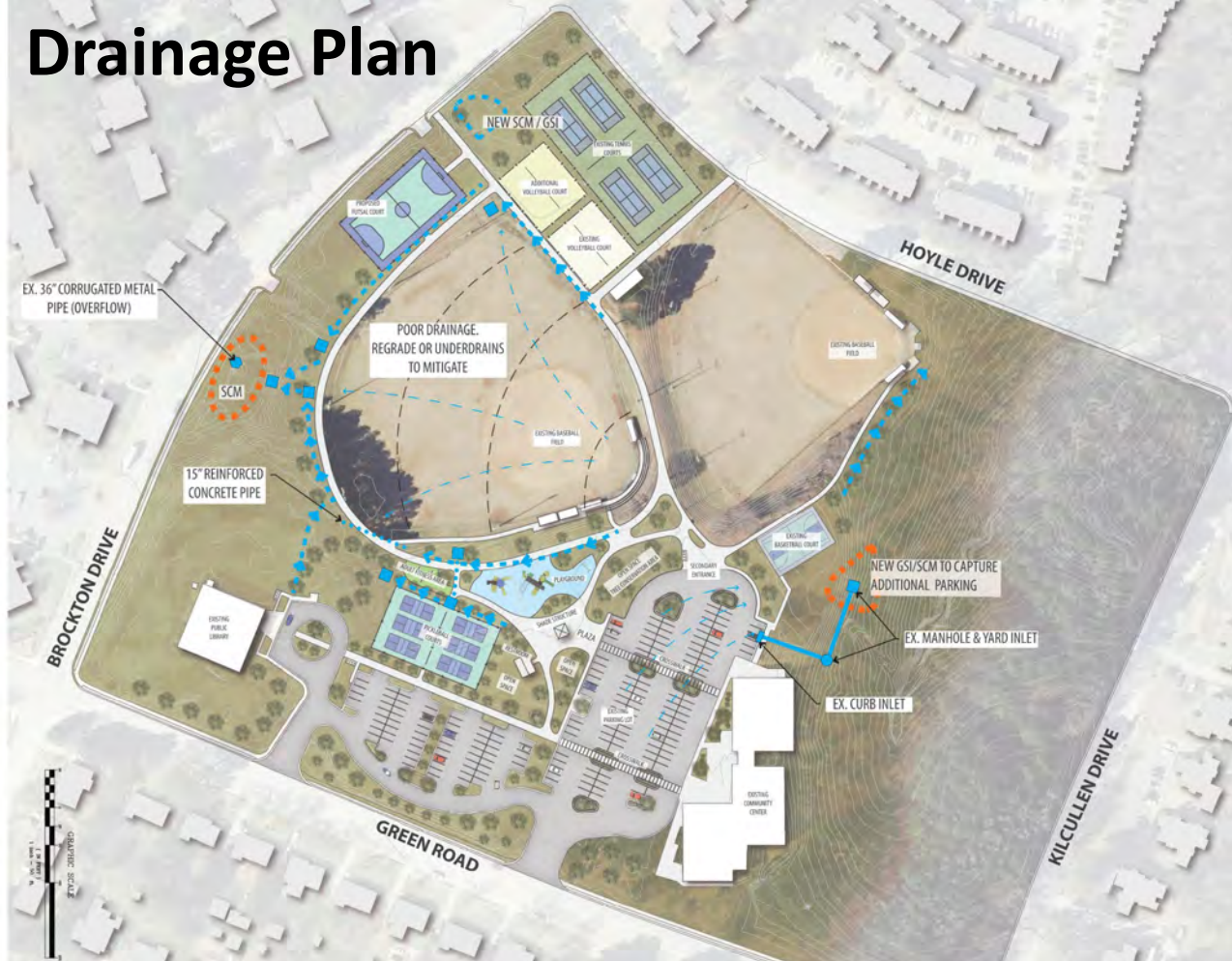
Plaza Shade Structure



New Restroom Building



Drainage Plan



GSI EXAMPLES



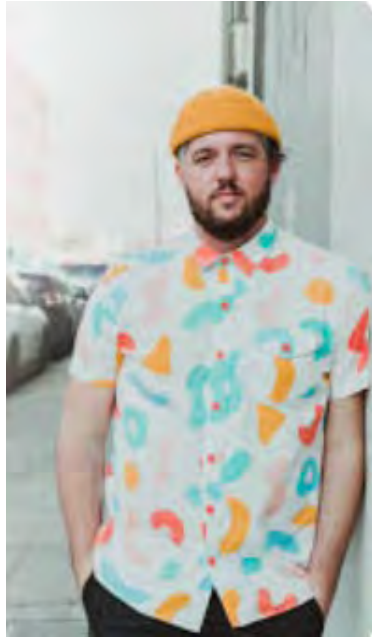
LEGEND

- YARD INLET
- CURB INLET
- MANHOLE
- GSI SWALE
- STORM PIPE
- ⋯ RCP PIPE
- ⋯ REGULATORY SCM



PUBLIC ART

Ryan Swanson & Maeghann
Colemann of [The Urban Conga](#)



- \$250,000 public art budget
- 130 artists submitted

The Urban Conga is comprised of a diverse group of creatives focused on sparking community interaction and social activity through open-ended play. We achieve this by utilizing play methodologies as a critical tool implemented not just in the work itself but in the participatory design process in which the work is created.



The Urban Conga public art portfolio samples



Thank you!

Di Gao - Parks, Recreation and
Cultural Resources/Resources

Rachel Watson - CLH Design