



Public Art at Kyle Drive Park

Call for Artists | Request for Qualifications



Stream within Kyle Drive Park

Summary

- Create Public Artwork at Kyle Drive Park. This project is part of the 2022 Parks Bond.
- Artwork can be integrated into the planned amenities or artwork can be stand-alone in the park.
- **\$40,000** budget to design and fabricate. Additional funds are held for engagement and accessibility.
- Up to three semi-finalists will be selected to interview and paid a **\$100** honorarium.
- **Deadline to apply: July 1, 2024**
- **Submit online at: <https://raleigharts.slideroom.com/#/permalink/program/78357>**



Beaverdam Creek Wetland within Kyle Drive Park

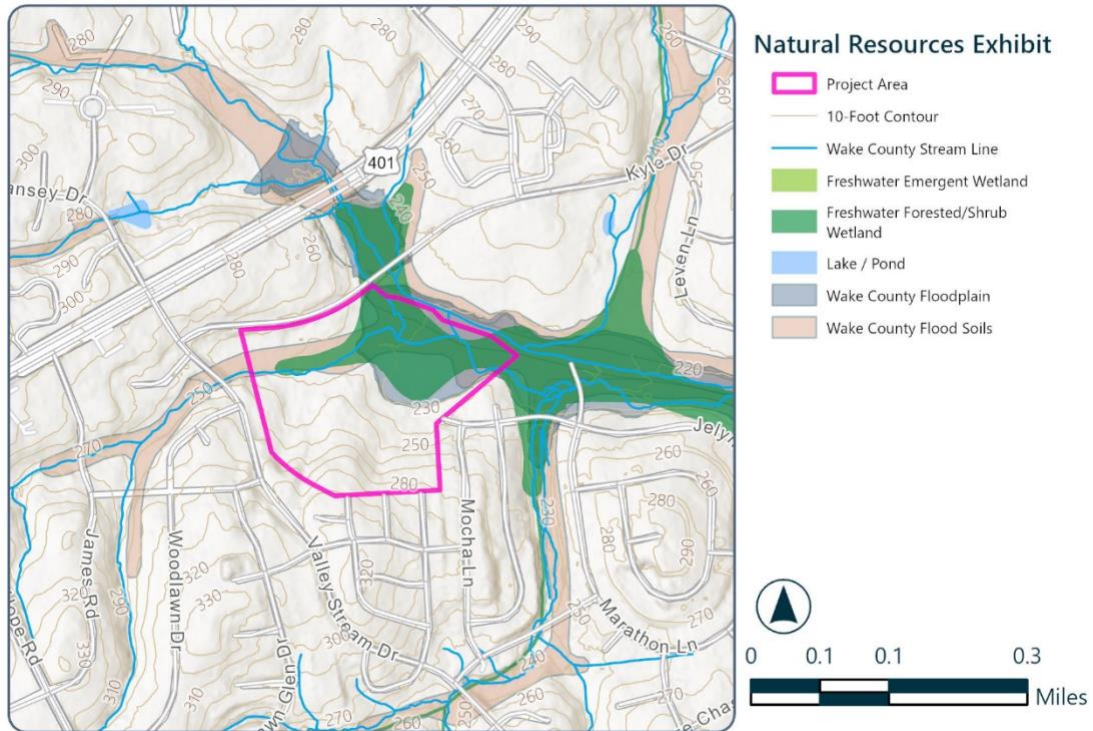
Eligibility

1. This opportunity is open to individuals and teams **who live or work in Raleigh.**
2. Applicants must be legally authorized to work in the United States and have unexpired documents that establish employment eligibility.
3. Applicants must be at least 18 years of age.
4. Applicants must have at least a three-year history of professional practice.
5. Applicants must have demonstrated experience in design through the creation of high-quality work.
6. Lead applicant cannot be enrolled in an undergraduate course of study in the visual arts as of January 1, 2024.

Budget

\$40,000 budget inclusive of design, artwork fabrication, community presentations, taxes, travel and fees.

Raleigh Arts will hold separate funding to cover community engagement expenses and accessibility accommodations for the project. These funds will be administered by the arts office and can cover things like public meetings, creative input gathering events, working with local community historians, and hiring local artists to help with outreach. The Artist will work with Raleigh Arts to create an engagement plan.



Project Overview

The City of Raleigh seeks to hire an artist to create public art at Kyle Drive Park.

The future Kyle Drive Park is a currently undeveloped parcel, located at [4700 Kyle Drive](#), near the intersection of Louisburg Road (U.S. Highway 401) and Valley Stream Drive. Currently, a Master Plan is being developed for the site. The project will move into the design phase by Fall 2024 and will obtain permits for construction in 2025.

The Vision Statement for Kyle Drive Park is: ***“Inspired by the Beaverdam Creek Wetland, Kyle Drive Park will connect visitors to nature and serve as an inclusive community hub, providing nature-based recreation, multi-generational activities, and enhancement of the natural environment.”***

A small freshwater stream nearly bisects the park, flowing from west to east before emptying into the wetland that dominates the northeastern portion of the site. This wetland covers approximately 9 acres, about 30% of the park. The wetlands found within the Kyle Drive Park are part of a larger wetland system that extends beyond the property boundaries and along the riparian boundaries of Beaver Creek, collectively measuring roughly 63 acres. Water levels tend to fluctuate seasonally and in response to beaver activity, creating habitat conditions capable of supporting a wide variety of taxa including wetland plants, insects, amphibians, mollusks, arthropods, and more.

The draft Master Plan features a large wetland boardwalk, which will include gathering areas and nature education signage. The plan also includes paved and unpaved trails, a basketball court, a traditional playground and nature playground, parking, restrooms, and green stormwater infrastructure.

More information is online at www.raleighnc.gov/projects/kyle-drive-park

The project timeline for planning, design and construction of these improvements runs from 2023-2028.



A colony of river cane along the edge of the Beaverdam Wetland

Public Art Goals and Opportunities

- Artwork can be stand alone or integrated into the site, two or three-dimensional.
- Artwork should be durable and long-lasting.
- Artwork should be nature-oriented.
- Work with community stakeholders to define community and aesthetic goals for the artwork.
- Selected artist will work with the planning and design teams to integrate artwork into the landscape, hardscape, and possible built elements.
- Selected artist will work to involve emerging local artist(s) or local art student(s) as part of the community-centric design development process.

Selection Criteria and Process

Applications submitted in response to this RFQ will be reviewed by the City of Raleigh Public Art Director, who will then forward all complete and eligible applications received by the deadline to the Artist Selection Panel. The Panel may include a member of the City of Raleigh Arts Commission, community artists, arts professionals, design professionals, and other stakeholders.

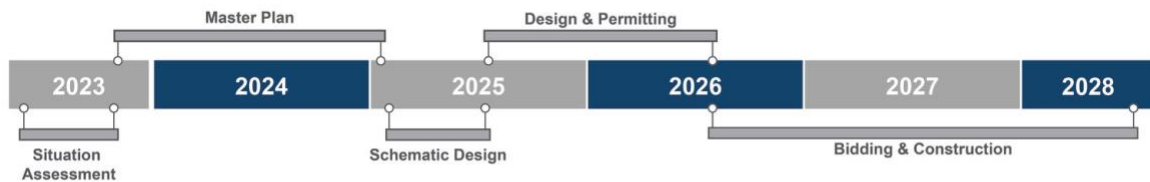
The Artist Selection Panel will evaluate the qualifications of artists based on four criteria: artistic merit; appropriateness for the project; community engagement; and social/cultural relevance of work.

Project Timeline

RFQ Application Deadline	July 1, 2024
Semi-Finalist Selected & Notified:	July 1, 2024
Semi-Finalists Interviews	August, 2024
Project Awarded	August, 2024
Potential for Selected Artist to weigh in on locations	September, 2024
Contract finalized	October, 2024
Concept Designs	November 2024 – January 2025

The selected artist will create concept designs, final designs and conduct community engagement 2024-2025. Artwork fabrication will likely occur 2025-2026. There are opportunities for the City to store the artwork after fabrication, before it is installed. Installation 2026-2027.

OVERALL PROJECT TIMELINE



How to Apply

Apply online using this link:

<https://raleigharts.slideroom.com/#/permalink/program/78357>

Those wishing to be considered must submit the following materials:

1. **Statement of Interest**

A statement, outlining your interest in this project and your experience working on public art projects, or relevant art experience. Include how your work and experience will complement this project.

You can submit this as:

- A written statement of 500 words or less
- Or a two minute or less audio or video clip. We will only play the first two minutes of audio for the panel.

2. **Biography**

A biography of no more than one page that includes information regarding your practice, experience, and education. If applying as a team, submit a single file containing separate biographies for each team member.

3. **Three Professional References**

Contact information for three references should be submitted, including name, title and affiliation, phone number and email address. References should be able to speak to your ability to provide services for a public art project or artwork of a similar scope.

4. **Previous Work, Digital Images**

Eight digital images of recent previous work (created within the past ten years) Each image should include: image number, artist's name, title, year, media, location, project budget, dimensions, commissioning agency, and collaborators or design professionals (if applicable).

Submission and Deadline

All RFQ materials must be received no later than **July 1, 2024**, at 11:59 p.m. Incomplete or late submittals will not be considered.

Non Discrimination Policy

The policy of the City of Raleigh is, and shall be, to oppose any discrimination based on actual or perceived age, mental or physical disability, sex, religion, race, color, sexual orientation, gender identity or expression, familial or marital status, economic status, veteran status or national origin in any aspect of modern life. The City of Raleigh Arts

Commission strives for a diverse representation of voices, life experiences, views, and interests to reflect the collaborative community we have and wish to serve.

Additional Information

For questions, contact Jenn Hales, Public Art Coordinator for Raleigh Arts, Jenn.Hales@raleighnc.gov.

For relevant information regarding the project, visit the Raleigh Arts website at: <https://raleighnc.gov/services/arts/artist-calls>