

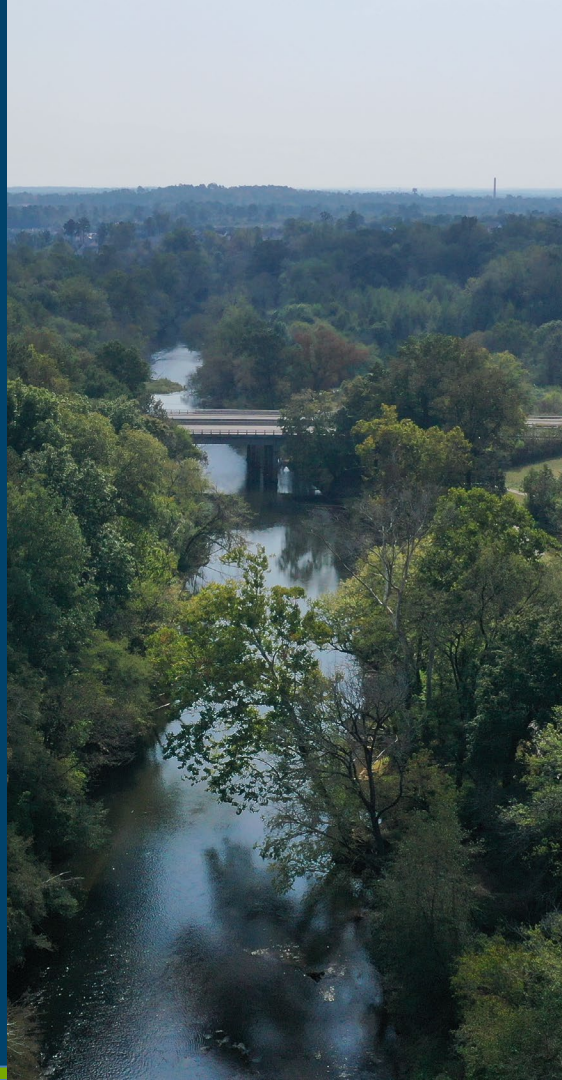
# Neuse River Park & Kyle Drive Park – Situation Assessments

Parks, Recreation and  
Greenway Advisory Board

July 20, 2023



Raleigh



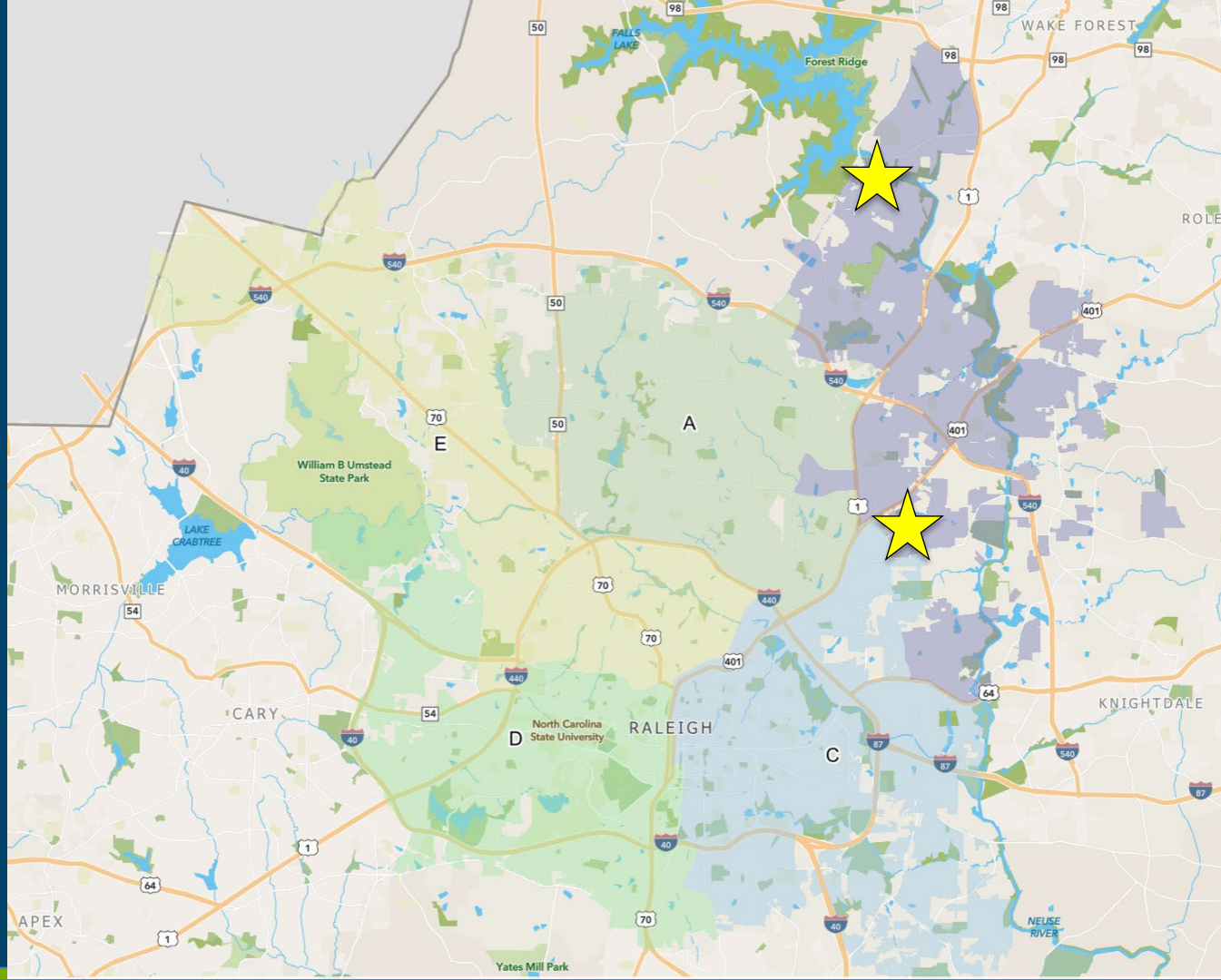


# Agenda

- **Project Introductions**
- **Situation Assessment Overview**
  - Community Advisory Groups (CAG)
- **Neuse River Park**
- **Kyle Drive Park**
- **CAG Outreach & Selection Process**
- **Next Steps**



Raleigh



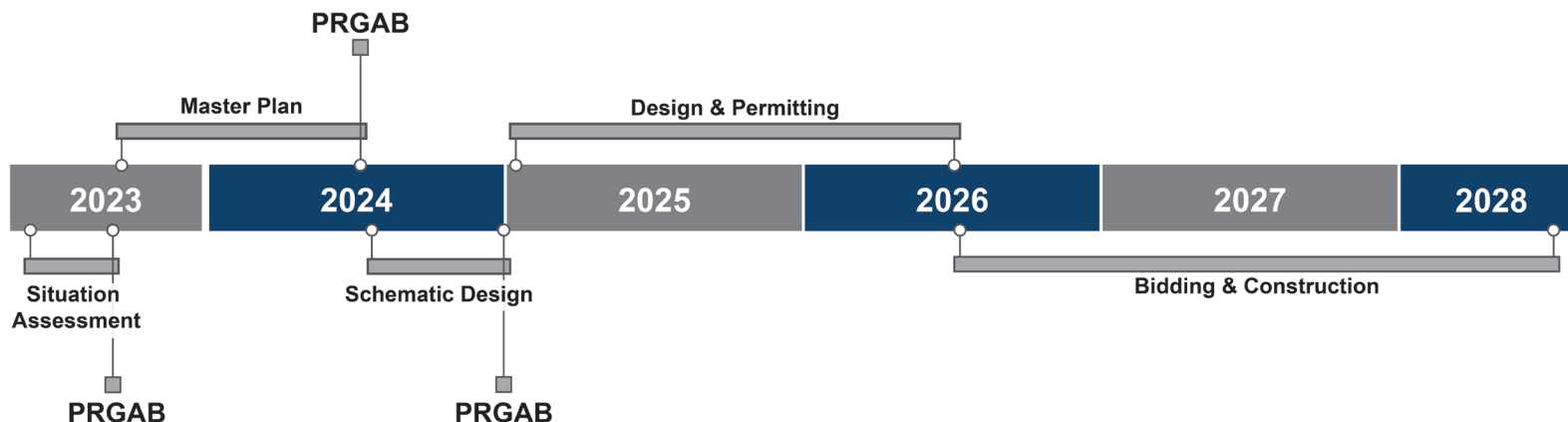


Raleigh

## 2022 Parks Bond

- Funding for community engagement, Master Plan development, design, and construction
- Neuse River Park: \$11.5M
- Kyle Drive Park: \$9M

### OVERALL PROJECT TIMELINE







Raleigh

## Situation Assessment

- “**Pre-planning**”: What is the best way to engage with *this community* in a collaborative process?
- Understand the historical, cultural, and planning context before we start a project
- Proactively identify and address any issues that may be contentious during the planning process
- Identify key stakeholders and **Community Advisory Group (CAG)** membership



## Community Advisory Group (CAG)

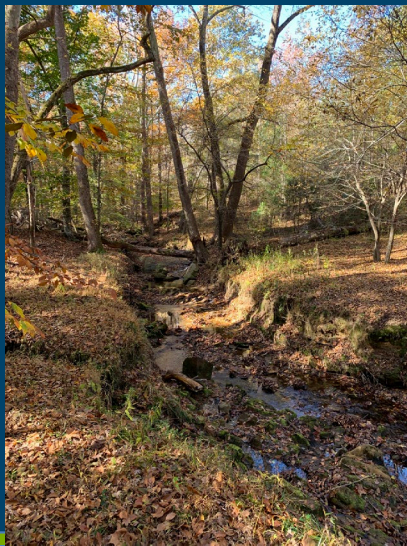
- Diverse committee of 10-15 people representing surrounding community and interest groups
- CAG members help facilitate information sharing between the community and planning staff
- CAG votes on key decision points and final recommendation to Advisory Board
- Consensus-based Master Plan process



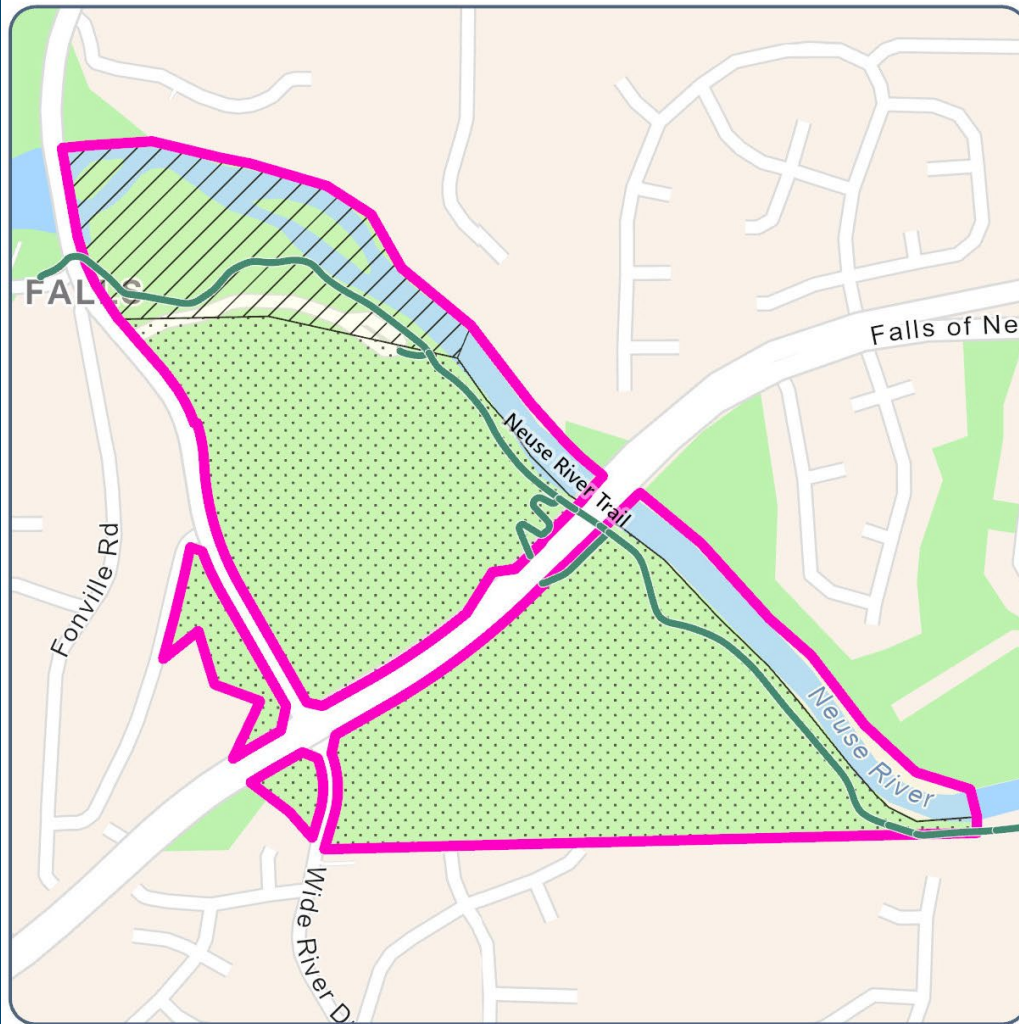
Raleigh

# Neuse River Park


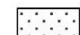
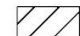

112 Acres

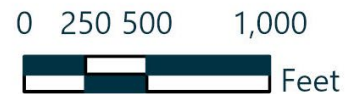






## Project Boundary Exhibit


-  Total Project Area
-  City-Owned Property
-  Property Leased from USACE
-  Neuse River Greenway Trail








# Neuse River Blueway Plan


LEGEND


 River Access

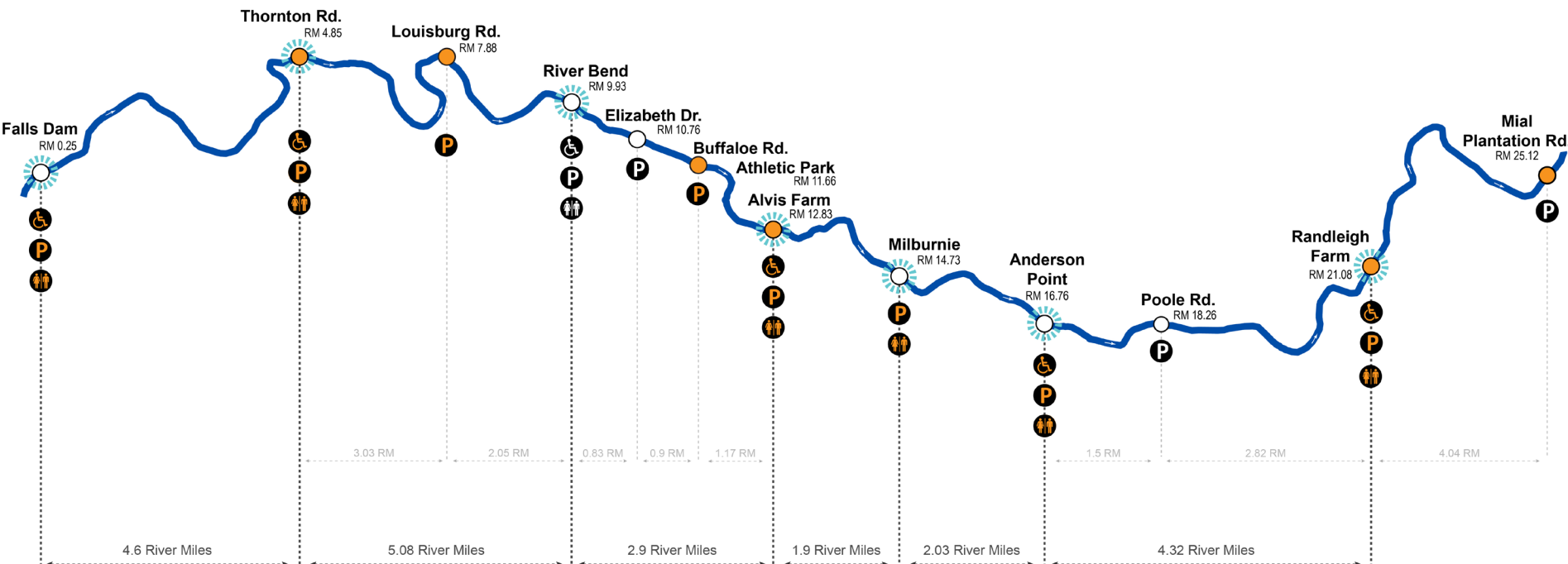
 Primary River Access

 Proposed New River Access / Proposed New Amenity

 ADA Accessible

 Parking

 Restrooms

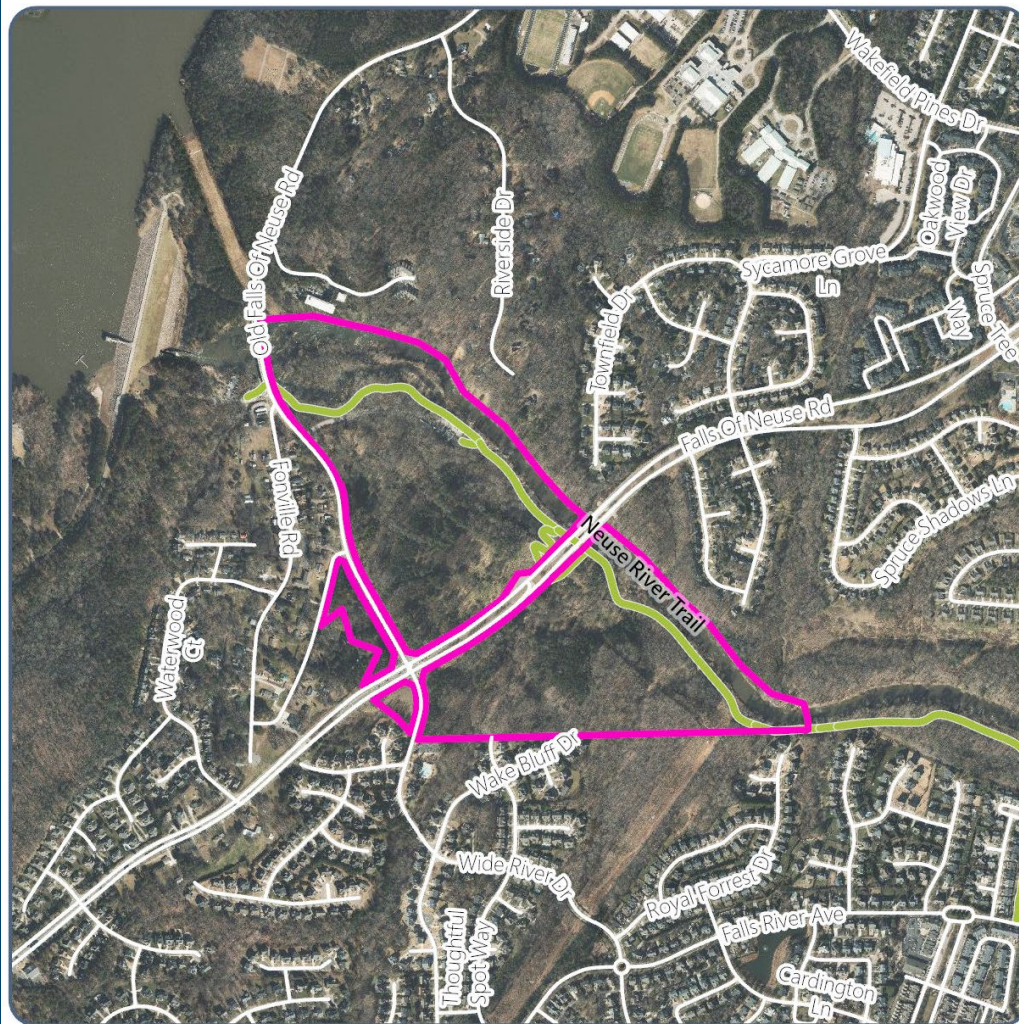




Raleigh








## Aerial Map View

-  Project Area
-  City of Raleigh Greenway Trails



0 400 800 1,600  
 Feet

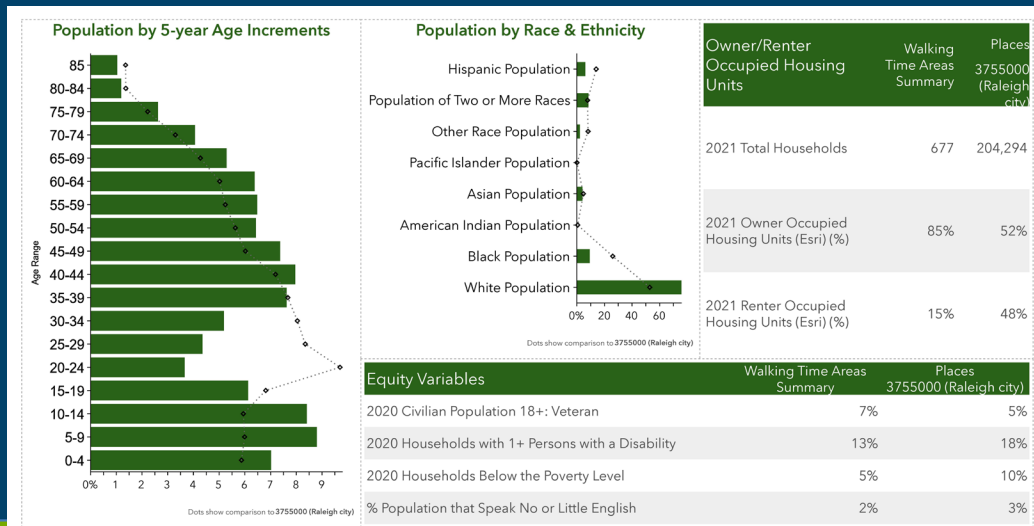
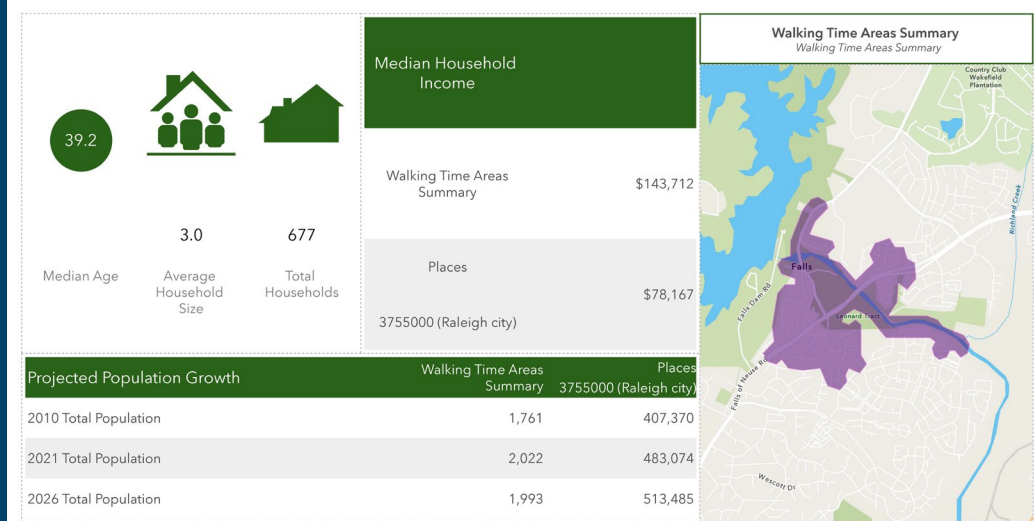




Raleigh

# 10-Minute Walk Demographic Analysis

- **Median Household Income:** Higher than City average
- **Age <15:** Higher than average  
**Age 15-35:** Lower than average  
**Age >40:** Higher than average
- **BIPOC:** Lower than City average

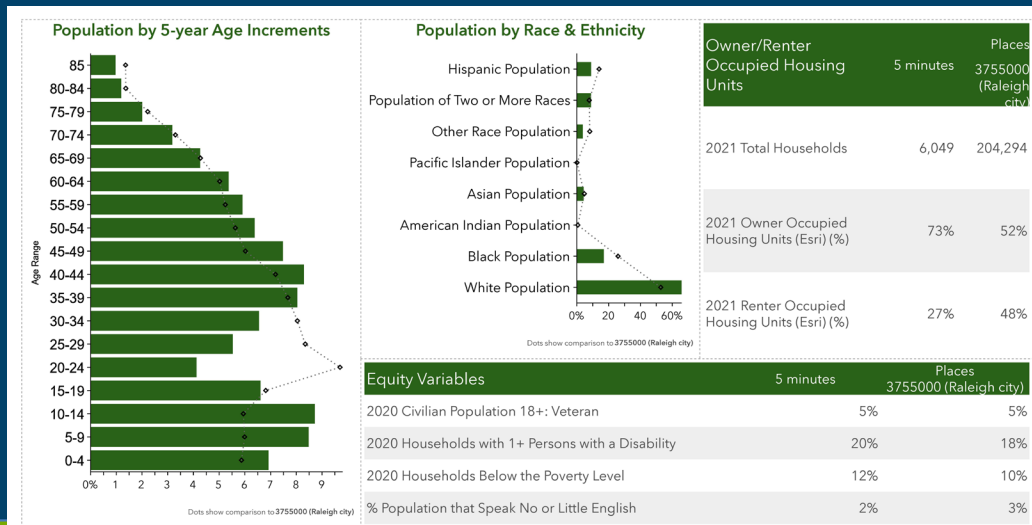
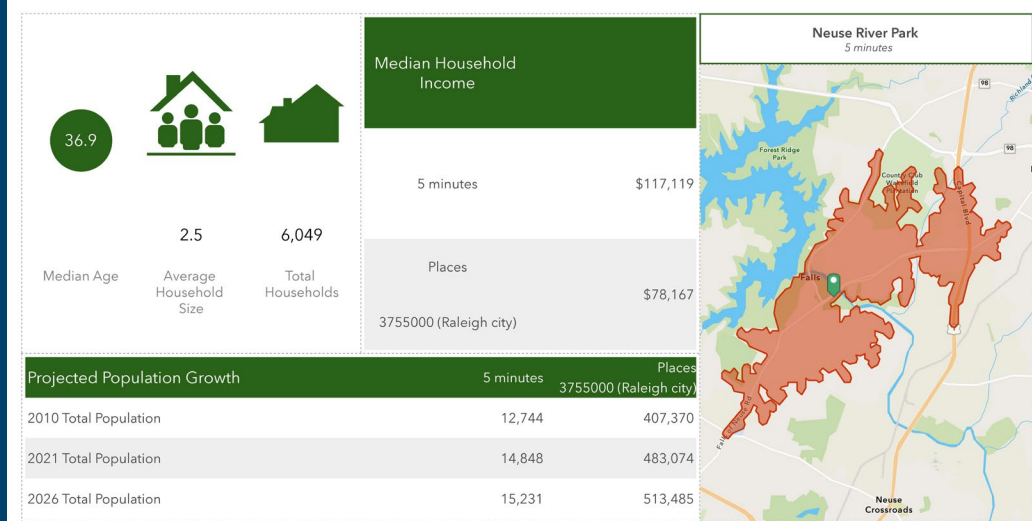




Raleigh

## 5-Minute Drive Demographic Analysis

- **Median Household Income:** Higher than City average
- **Age <15:** Higher than average  
**Age 15-35:** Lower than average  
**Age 40-60:** Higher than average
- **BIPOC:** Lower than City average





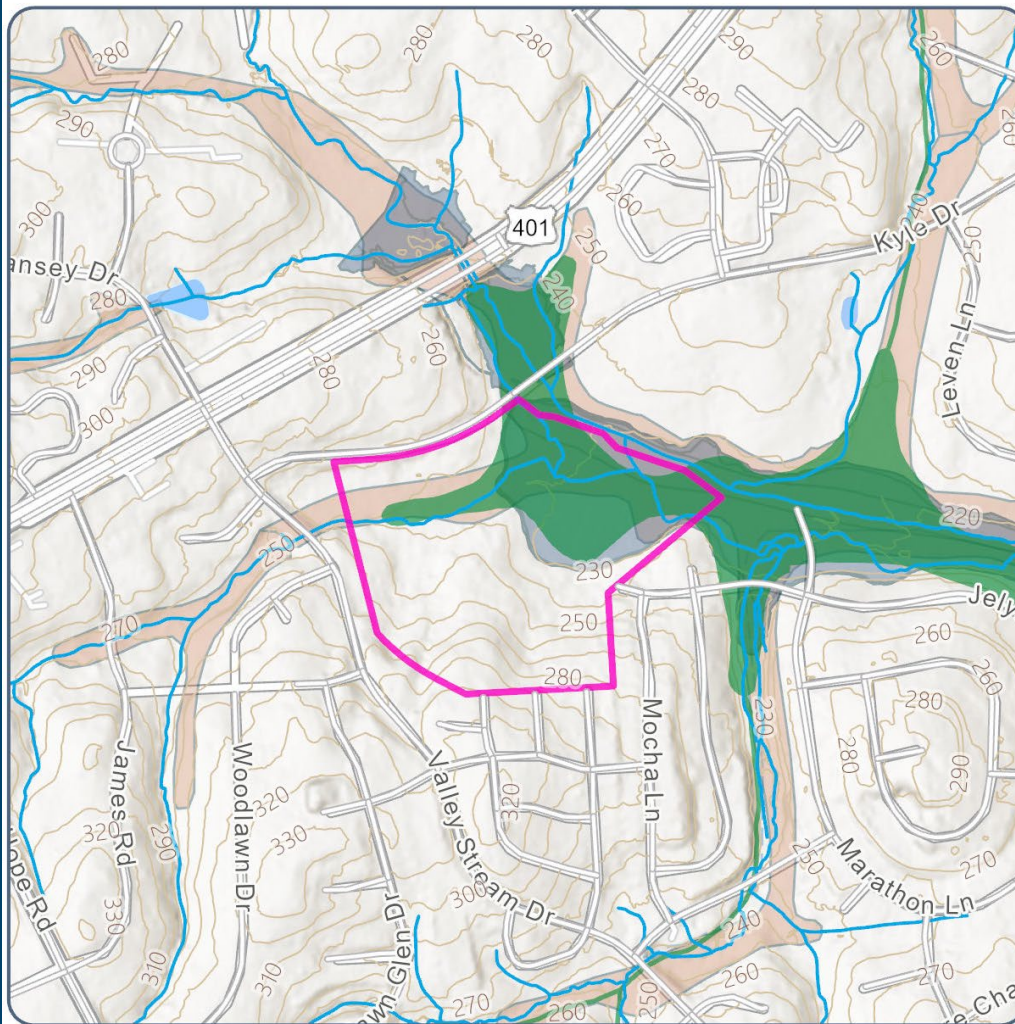
Raleigh

# Kyle Drive Park

27 Acres

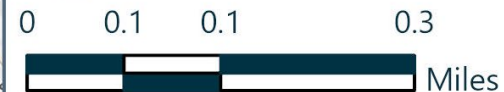


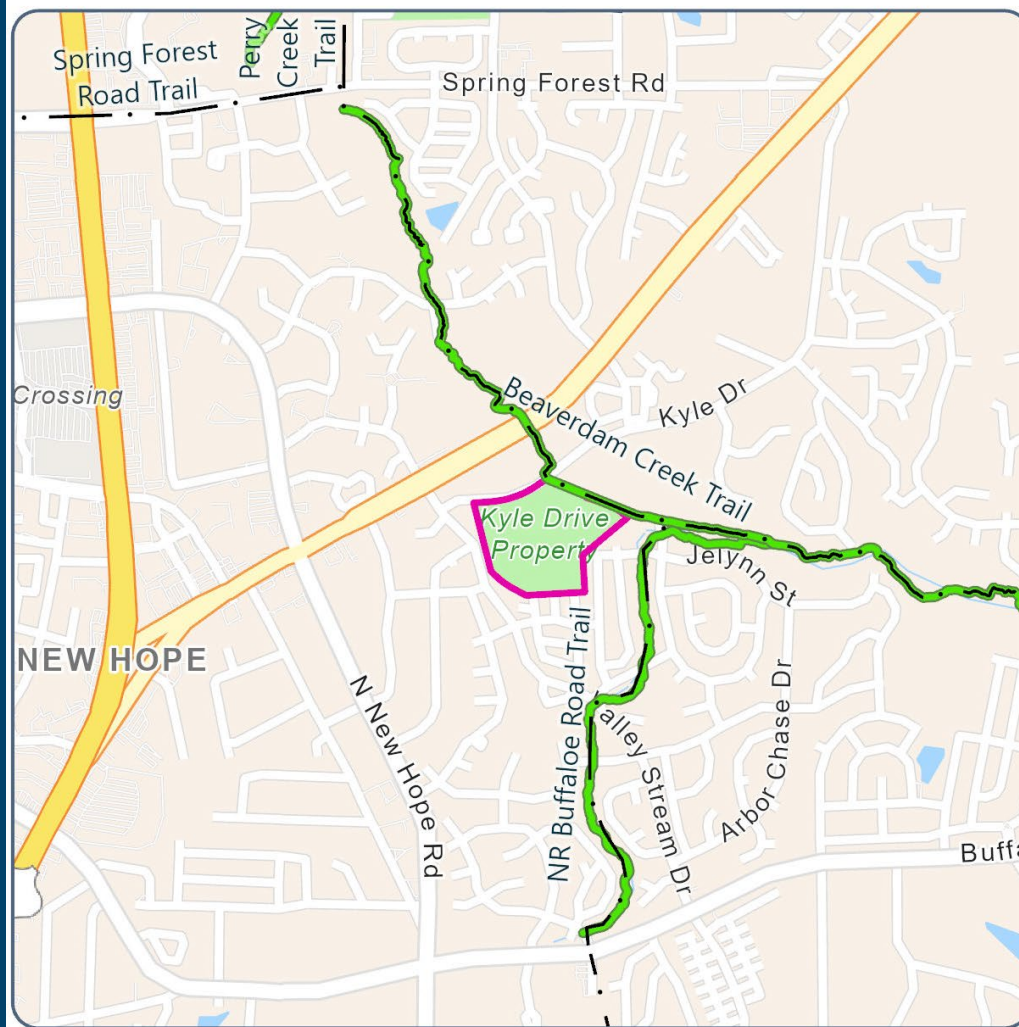







## Natural Resources Exhibit

-  Project Area
-  10-Foot Contour
-  Wake County Stream Line
-  Freshwater Emergent Wetland
-  Freshwater Forested/Shrub Wetland
-  Lake / Pond
-  Wake County Floodplain
-  Wake County Flood Soils

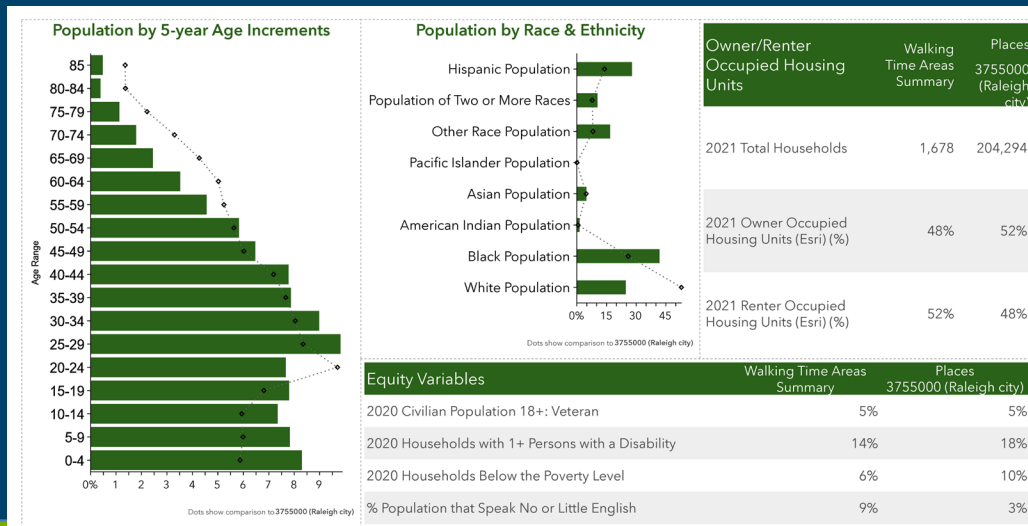




## Greenway Master Plan

-  Project Area
-  City of Raleigh Greenway Corridor Master Plan
-  Proposed Capital Area Greenway Corridor Trails





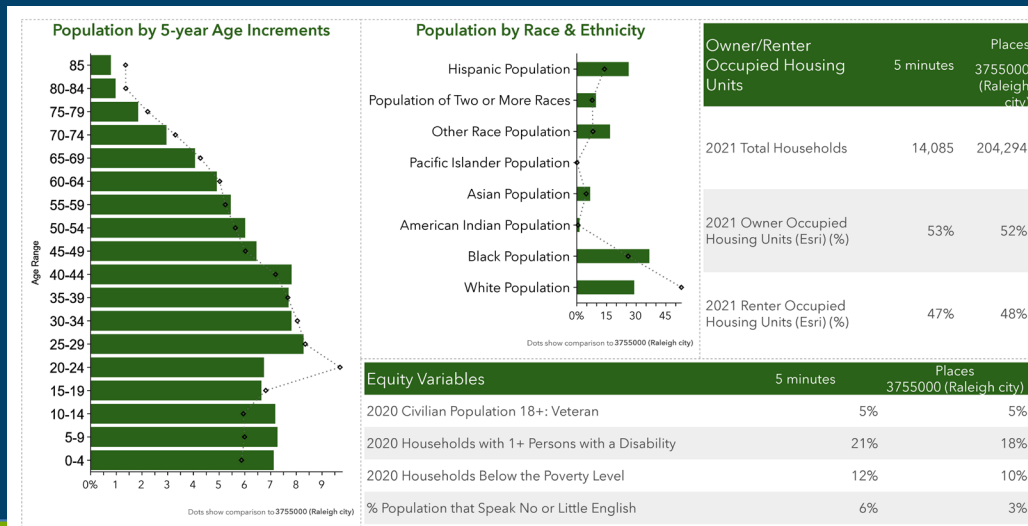
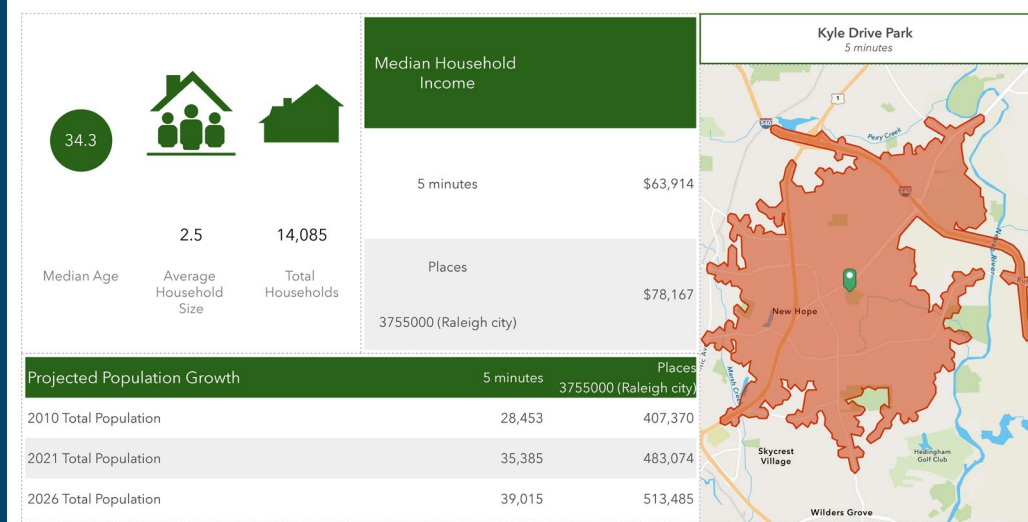




Raleigh

## 5-Minute Drive Demographic Analysis

- **Median Household Income:** Lower than City average
- **Age <15:** Higher than average
- **BIPOC:** Higher than City Average





Raleigh

## CAG Selection Process

<b>July 20</b>	Draft Situation Assessment to PRGAB
<b>July 31</b>	CAG Application Period Ends
<b>Sept 7</b>	Parks Committee – CAG Selection
<b>Sept 21</b>	Final Situation Assessment & Recommended CAG to PRGAB for Approval Action

\* August Parks Committee Meeting - TBD

# Communication Strategies

## Digital:

- Websites at [raleighnc.gov](http://raleighnc.gov) and [publicinput.com](http://publicinput.com)
- Social Media announcements
- Raleigh Parks weekly digital newsletter
- Mass email outreach to residents of 27614 & 27615 zip codes (based on previous participation on [publicinput.com](http://publicinput.com))
- Email outreach to identified community stakeholders

## Print & In-Person:

- Signs at the park site and adjacent street intersections (English & Spanish)
- Posters & Rack Cards at nearby parks including Forest Ridge Park, Annie Louise Wilkerson MD Nature Preserve Park, and Abbott's Creek Park (English & Spanish)
- Posters & Rack Cards at Northeast Regional Wake County Public Library (English & Spanish)
- North CAC Presentation

# Neuse River Park: CAG Outreach

Outdoor Recreation Special Interest Groups	HOAs & Neighborhoods	Apartments	Latino & Immigrants Groups	Other Nearby Groups
Sound Rivers	Bedford at Falls River	The Residences at Wakefield	El Centro para Familias Hispana	WCPSS: Wakefield Elementary, Middle & High Schools
Carolina Canoe Club	Dalton's Ridge	Gardens at Wakefield	El Pueblo	CACs: North, Midtown, & Atlantic
Carolina Kayak Club	Falls Pointe	Maystone At Wakefield Apartments	Consulado de Mexico	Wake County Social and Economic Vitality
Falls Whitewater Park Committee	Glenstone at Wakefield	Legacy At Wakefield	La Ley	Urban Land Institute
Oaks & Spokes	Oakcroft	Columns At Wakefield	Council on Immigrant Relations	Kerr YMCA
Wake Audubon	River Run	Wakefield Hills	ALPES	Lineberger's Tree Service
Great Outdoors Provision	Village of Wakefield		Wake County Human Services	Triangle Land Conservancy
Neuse River Outfitters	Wakefield Plantation		In-Stepp	NC State Parks, Recreation, and Tourism Management Program
Raleigh Fly Fishing	Wood Spring & Wood Bridge		La Semilla	Brentwood Boys & Girls Club
American Canoe Association NC			El Centro Hispano	Wake County Public Library



# Kyle Drive Park: CAG Outreach

## Communication Strategies

### Digital:

- Websites at [raleighnc.gov](http://raleighnc.gov) and [publicinput.com](http://publicinput.com)
- Social Media announcements
- Raleigh Parks weekly digital newsletter
- Mass email outreach to residents of 27616 zip code (based on previous participation on [publicinput.com](http://publicinput.com))
- Email outreach to identified community stakeholders

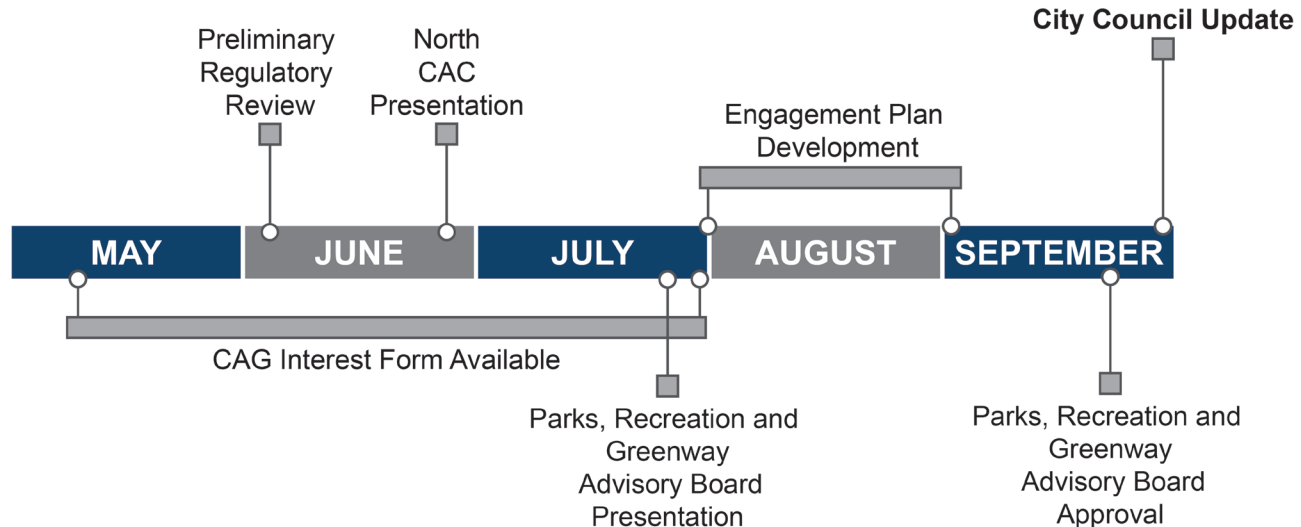
### Print:

- Signs at the park site and adjacent street intersections (English & Spanish)
- Posters & Rack Cards at nearby parks including Marsh Creek Park and Green Road Park (English & Spanish)
- Posters & Rack Cards at Green Rd. Wake County Public Library (English & Spanish)

HOAs	Apartments	Other Nearby Groups
Analeigh	Regency Park Apartments	WCPSS: East Millbrook Middle School & Wilburn Elementary
Brookstone & Cardinal Grove	Wynslow Park Apartments	CACs: North & Atlantic
Charleston Park	Magnolia Grove Apartments	4-H Club
Cobblestone II	The Oaks Apartments	Nearby Developer Halle Companies
Foxcroft	The Domain Apartments	Raleigh North Christian Center
Ivy Hill	Honey Tree Apartments	St. Matthew Baptist Church
Jasmine Ridge	Vivo Living Apartments	Wake County Public Library
North Farms Community Watch	Lexington on the Green Apartment Homes	
Lincoln Villas	Groves Apartments	
Northshore		
Peyton Hall		
Shamrock Meadow		
Spring Pines		
Summit Ridge/St. James		
Top of the Pines Court		
Valley Stream of Raleigh		
Winchester		
Winward Downs		

## Next Steps

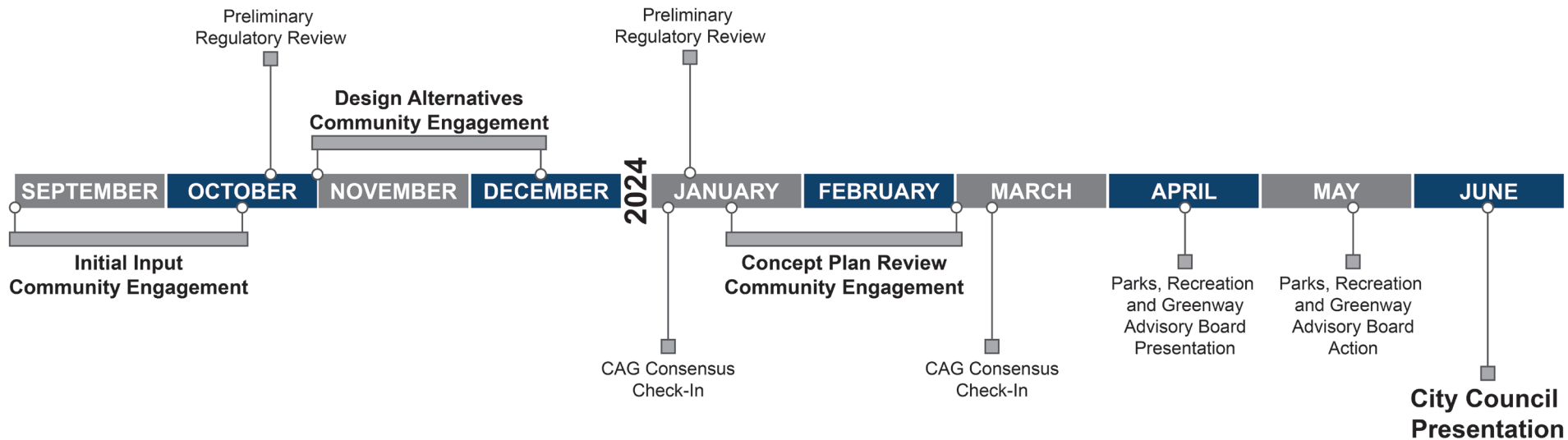
### SITUATION ASSESSMENT TIMELINE





# Next Steps

## MASTER PLAN TIMELINE





# Questions?

