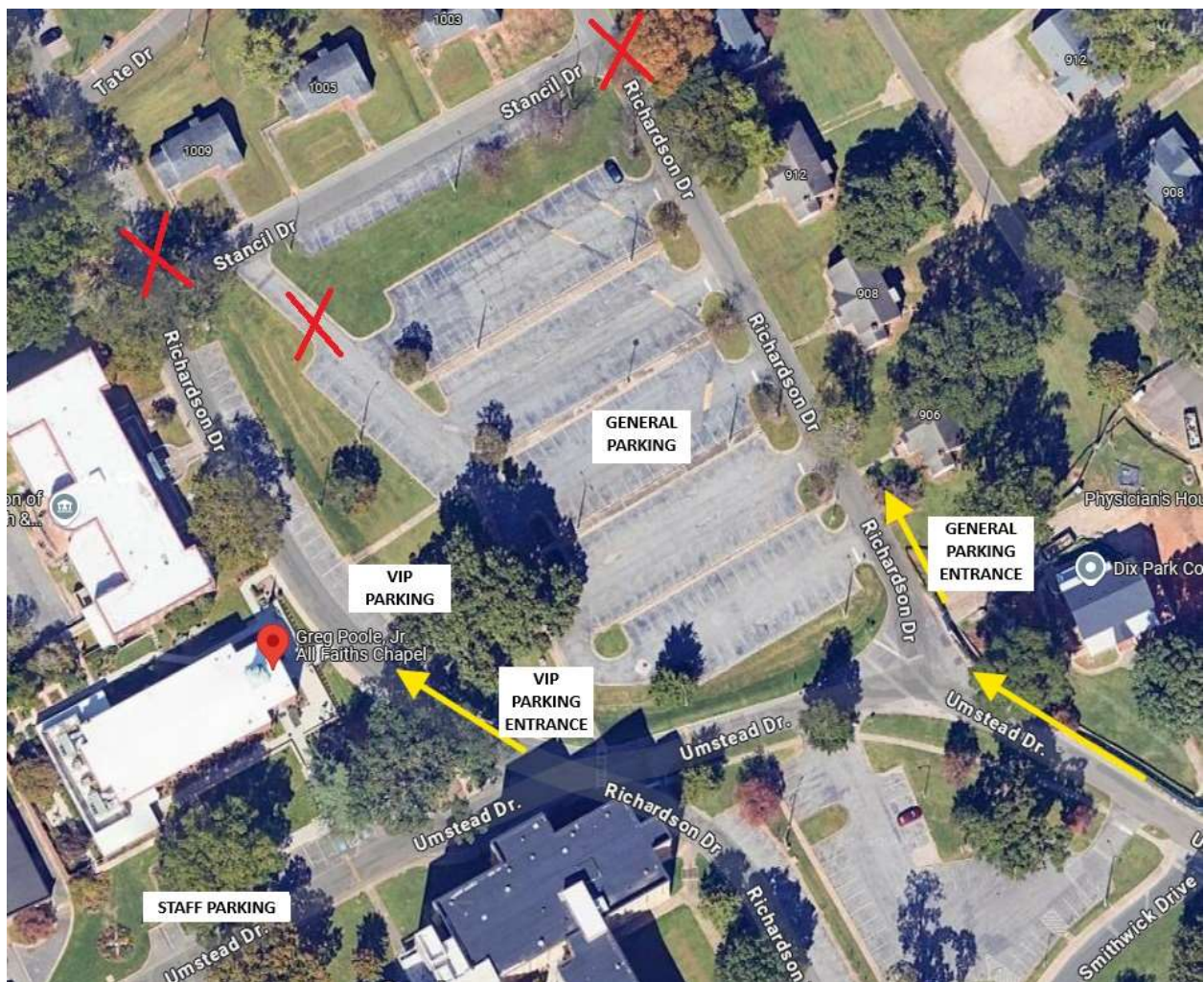


Arrival and Parking:

The parking lot will not be open on all sides as indicated in the photo below. We recommend entering Dix Park by turning onto **S Boylan Avenue from Western Blvd** and then turning **right onto Umstead Drive**. This will take you to the entrance as indicated by the yellow arrows, but you will be able to drive around the parking lot if you enter Dix Park on a different road.

- VIP Parking: Please have your VIP parking pass ready and continue past the general parking entrance. Take the second turn for **Richardson Drive** and park as directed by parking attendants. The other entrance to this section will be closed off via cones, so please use this same entrance when exiting.
- General Parking: Please enter the first turn for **Richardson Drive** and park in any of the available spaces. All other entrances to this parking lot will be closed off via cones, so please use this same entrance when exiting.
- Accessible Parking: If you need accessible spots, please let the parking attendants know and continue down Umstead Drive and park in the designated accessible parking spots near staff parking (lower left corner of the map).



Weather Make-Up:

We are keeping a close eye on the weather and hope to still host our event this Saturday as planned. In the event we need to cancel due to unsafe conditions, you will receive an email notice by 3:00 p.m. on Friday. If this happens, we reschedule to **Saturday, January 18** and we will automatically transfer your tickets to our new date if this happens. Sales are final, but if you are unable to attend the makeup date and wish to transfer your tickets to a friend, please email fee.assistance@raleighnc.gov with the new name(s). You can similarly transfer your tickets if it is not rescheduled and you are unable to attend this weekend.

Event Details:

The Holly Jolly Raleigh Adult Prom will be this Saturday, January 11 from 8:00 p.m. to 11:00 p.m. at Dix Park Chapel (Greg Poole, Jr. All Faiths Chapel: 1030 Richardson Dr, Raleigh, NC 27603). Crank Arm Brewing will be on-site with a cash bar serving beer and wine. Mocktails and water will be available free of charge. Catered hors d'oeuvres will be available throughout the event, with cookies provided as a late-night snack courtesy of Captain Cookie.

Check-In, What to Bring, and Coats:

Please bring your I.D. if you would like to purchase alcohol from Crank Arm Brewing. If you purchased the ticket(s), please have your confirmation email ready at check-in in the lobby. If other members of your party are arriving later, please let the check-in staff know their name. Once checked in, you will receive a wristband confirming your check-in and a ticket to vote for Prom Court.

There is a small coat rack in the lobby with limited space. You are welcome to leave your coat, but please note we will not be responsible for items on the rack. We recommend leaving your coat in the car if possible.

Prom Court & Raffle Tickets:

Prom Court nominations have closed, but now the fun begins! There will be a table in the lobby with information on all members of the court, and the ticket you receive at check-in (1 per guest) will be used to cast your vote for our two final Royal Court winners. Raffle tickets may be purchased at the financial assistance table for \$3/each or \$5 for 2 tickets, and can be used for our raffle items or additional prom court votes.

Play It Forward Financial Assistance Fund:

Lastly, we want to thank you again for joining this first inaugural prom to support our Play It Forward Financial Assistance Fund. Although we are excited to party and dance the night away, we can't forget how incredible this fundraising event is and the difference it will make to so many people in the City of Raleigh. The Play It Forward Raleigh Financial Assistance Program provides affordable, accessible programs that bring children, individuals, and families into our parks and give them great reasons to play for a lifetime. Your ticket purchase is already supporting this cause, and there will be a table in the lobby with more information and ways to further donate (including raffle tickets)!